

NEW PRODUCTS

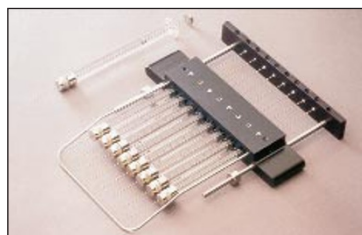
Electrophoresis



2-D electrophoresis

A fully automated DNA electrophoresis unit that can separate DNA with just one gel is available from GRI Molecular Biology (Braintree, UK). The DNAnalyser uses two-dimensional electrophoresis with two layers. The top layer is neutral for size separation and the lower layer contains a gradient of denaturing agents for separation according to base pair composition.

Tel: +44 1376 332900
Fax: +44 1376 344724
RSN: 1125



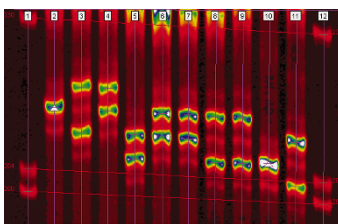
Gel loader

Designed for electrophoresis DNA sequencing, Gel-Mate from World Precision Instruments (Sarasota, FL) accurately loads 8 or 12 samples simultaneously into square or sharktooth sequencing gels. Different needle diameters allow easy loading into wells ranging from 0.2–0.4 mm, and special guards prevent needle damage during sample loading. Replacement stainless fused-silica needles and single syringes are available.

Tel: +1 941 371 1003
Fax: +1 941 377 5428
www.wpiinc.com
RSN: 1126

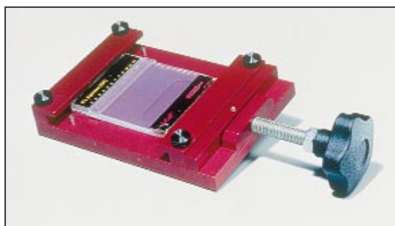
Image analysis software

RFLPscan Plus version 3.5 from Scanalytics (Fairfax, VA) automates the acquisition and storage of data from electrophoretic gel images. Applications include DNA fingerprinting, protein or DNA product QC or QA, and forensic and genetic linkage analysis of RFLP, VNTR, or STR microsatellite markers. Features include automatic detection and marking of homozygous alleles, an experiment descrip-



tion providing key parameters for accurate measurement of allele number and frequency, and expanded functions in the database manager for archiving sample information.

Tel: +1 703 208 2230
Fax: +1 703 208 1960
www.scanalytics.com
RSN: 1127



Gel opener

The E-Gel Opener is specifically designed to easily and safely open E-Gel cassettes, the only available self-contained, bufferless, pre-cast agarose gels on the market, allowing the user to gel purify DNA fragments from the E-Gel or transfer samples onto a membrane for Southern blot analysis. The E-Gel Opener uses two steel blades to efficiently open E-Gel cassettes without harming the gel. Both E-Gel cassettes and the E-Gel Opener are available from Invitrogen (Carlsbad, CA).

Tel: +1 800 955 6288
Fax: +1 760 603 7201
www.invitrogen.com
RSN: 1128



Gels for sequencing

A new acrylamide gel solution for DNA sequencing gives improved read-length characteristics during Sanger di-deoxy sequencing reactions. Severn Biotech (Kidderminster, UK) bases its Severn Super Sequencer on an acrylamide monomer with new crosslinkers to

give read lengths of over 800 bases. The solution is ready to use and includes TBE buffer and urea.

Tel: +44 1562 825286
Fax: +44 1562 825284
RSN: 1129

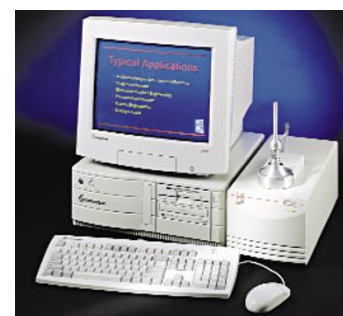
Process monitoring and validation



Advanced data collection

A data acquisition system from Anville Instruments (Camberley, UK) comes integrated with Windows-compatible X425 software, with no programming required. The Series 425 is more flexible than a chart recorder, easier to set up than a PC plug-in card, yet provides accurate data acquisition, recording, and alarm monitoring.

Tel: +44 1276 25107
Fax: +44 1276 29141
RSN: 1130



Microcalorimetry system

MicroCal's (Northampton, MA) VP-ITC is an automated isothermal titration calorimeter for the study and characterization of biomolecular interactions such as protein-ligand, protein-protein, drug-DNA, DNA-protein, antigen-antibody, receptor-effector, etc. It provides accurate determinations of binding constants, stoichiometry, and heat and entropy of binding. Operation can be controlled based on selected input parameters, and data can be collected, analyzed, and graphically presented.

Tel: +1 800 633 3115
Fax: +1 413 586 0149
www.microcalorimetry.com
RSN: 1131

1998 Nature America Inc. • <http://biotech.nature.com>