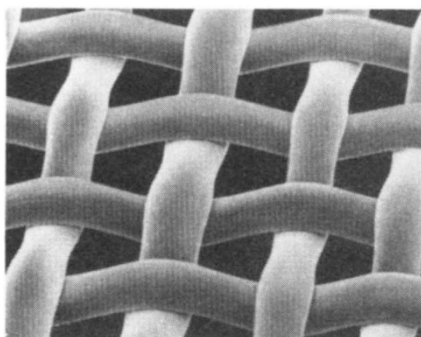


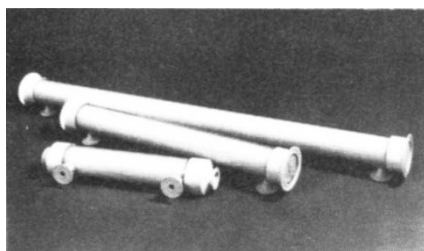
FILTRATION PRODUCTS



Filtering Material for Cell Isolation.

BioDesign (Carmel, NY) introduces CellMicroSieves, a filter matrix of woven nylon filaments specifically formulated to be inert for biological research. This laboratory tool allows the rapid isolation of cells, organelles, or cellular debris. As specific sized porous screens, the product can be used to separate cells based on size, collect either cells or media without centrifugation, isolate single cells from dissociated tissue, or rapidly pass media in a bioreactor.

Write in 805 on Reader Service Card



Cartridge Sizes.

A/G Technology (Needham, MA) announces two new hollow fiber membrane cartridge sizes. Both are 5.1 cm in diameter; one is 36 cm long, and the other is 63.5 cm in length. These cartridges are designed for new installations and for retrofit of existing laboratory and benchtop membrane filtration cartridges. Typical applications are fermenter cell harvesting, protein concentration, and diafiltration.

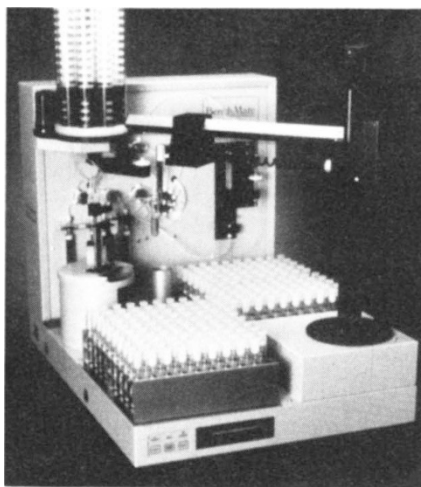
Write in 804 on Reader Service Card

Chromatography Media.

Whatman (Maidstone, U.K.) manufactures filtration and separation media and columns for use in preparative and process scale chromatography. Media can be provided from a range of available products, or can be custom manufactured. Whatman's in-house facilities include grinding and classification of silica, variations in levels of

end-capping, and optimization of bonding chemistry to the required level of carbon loading.

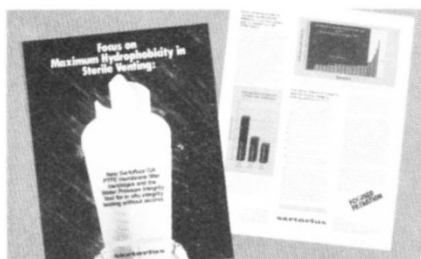
Write in 803 on Reader Service Card



Automated Sample Preparation.

Zymark (Hopkinton, MA) introduces BenchMate Workstations that automate routine laboratory sample preparation tasks, and use industry standard 25 mm disposable filters. The software allows the user to prewet or prewash with either sample or solvent before collecting the filtrate. Methods are developed in minutes from easy-to-use pull down menus. An internal balance monitors every liquid transfer or addition with four-place precision, providing a completely documented sample trail for reliable sample reporting.

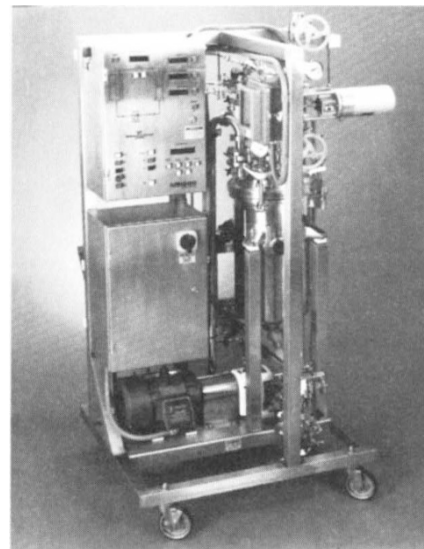
Write in 806 on Reader Service Card



PTFE Filters.

Sartorius (Bohemia, NY) introduces a validated water pressure integrity test (WPIT) for its new permanently hydrophobic PTFE filters. Since hydrophobic membranes resist water by nature, this resistance can be used as the basis for the new integrity test. In the WPIT the filter is never wetted out, so the drying step is greatly reduced.

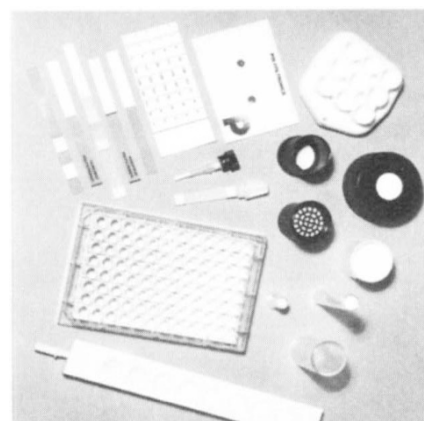
Write in 817 on Reader Service Card



Ultrafiltration System.

Amicon (Beverly, MA) introduces an ultrafiltration system that continuously monitors and adjusts its operating parameters to maximize throughput and product recovery. The system supports small-scale production or process development for product concentration, fractionation, clarification, and purification. Several options, such as heat exchangers, are available.

Write in 807 on Reader Service Card



Filter Devices for Diagnostics.

In diagnostic applications, filters and membrane media are not just separating systems, but are often used to contain some very complex, and innovative, reactive chemistry. Polyfiltronics (Surrey, U.K.) presents techniques to bond membranes into a range of devices and diagnostic systems designed to ensure non-interference with reactive chemistries.

Write in 802 on Reader Service Card