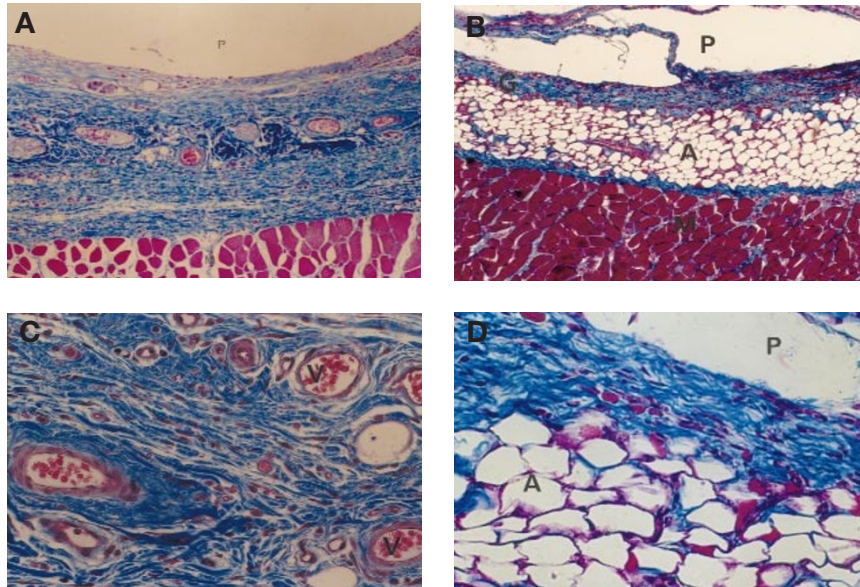


**DNA delivery from polymer matrices for tissue engineering**

Because of a printing error, Figure 4 in "DNA delivery from polymer matrices for tissue engineering", by Lonnie D. Shea, Elizabeth Smiley, Jeffrey Bonadio, and David J. Mooney was printed incorrectly. The entire figure and caption are below:



**Figure 4.** In vivo response to release of plasmids encoding for PDGF and control (nt  $\beta$ -gal) at two and four weeks. Plasmid was delivered either by direct injection or by release from a matrix. Photomicrographs of tissue cross section after four weeks of implantation for a matrix-releasing (A and C) plasmid encoding PDGF and (B and D) control plasmid at magnifications of 100 $\times$  and 400 $\times$ , respectively. Photomicrographs have labels for polymer (P), granulation tissue (G), muscle layer (M), adipose tissue (A), and vessels (V).