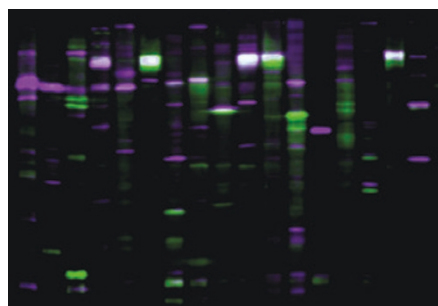


Drug discovery



Protein profiling

Three new Kineteworks Phospho-Site Services (KPSS), designed to track 37–43 different phosphoproteins on a single gel, are available from Kinexus. These screening services are a convenient and cost-effective way to detect the presence and regulation of hundreds of different phosphorylation sites in most model systems with high accuracy, precision, speed and reproducibility. Kineteworks is ideal for exploratory purposes for the discovery of new leads, drug targets or biomarkers.

<http://www.kinexus.ca/>

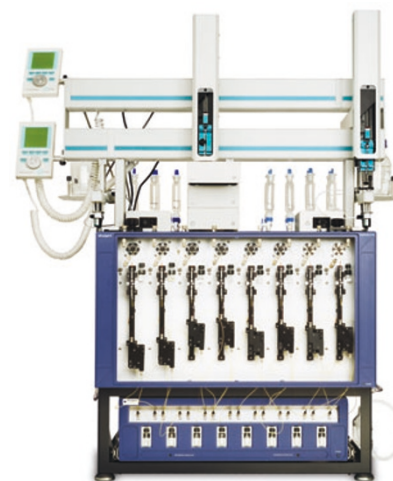


Mass spectrometer

Thermo Electron's LTQ Orbitrap is a hybrid mass spectrometer offering superior performance for small-molecule research, drug discovery, proteomics, metabolite identification and metabolomics. Combining patented Orbitrap technology with the highly successful Finnigan LTQ front-end, the LTQ Orbitrap

enables faster, more sensitive and more reliable detection and identification of compounds in complex mixtures.

<http://www.thermo.com/>

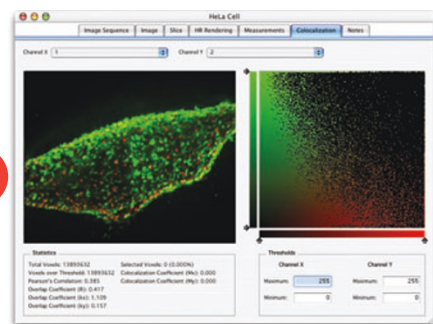


HPLC expansion

Eksigent Technologies' ExpressLC-800 rapid gradient HPLC system has expanded its functionality by integrating CTC Analytics' TwinPAL Autosampler to ensure optimized sample delivery to match the throughput of Eksigent's eight-channel system. The ExpressLC-800 can accept samples in two formats: regular 2-ml vials or 96-well microplates, either deep or shallow well. The system also includes two sample hotels that keep vials and plates ready for analysis, as well as dual wash stations, one for each sampling head. Each wash station uses two wash solvents to prevent sample carryover from injection to injection.

<http://www.eksigent.com/>

Software



Scientific imaging

Improvision's Volocity 3.5 is designed for 3D and 4D imaging. The software takes advantage of the high-performance 64-bit Windows operating system for features such as the colocalization tab, which shows a preview of the selected pair of channels for the current timepoint and the scatter plot of colocalization. Colocalization coefficients and Pearson's correlation may be calculated for whole volumes or the region of the scatter plot. The easy-to-use interface allows automatic scanning of selected regions as well as multipoint imaging experiments with slides or multiwell plates.

<http://www.improvision.com/>



Data warehouse

Unleashed Informatics offers DogBox, an integrated hardware/software solution to accelerate genomics, proteomics and cheminformatics research. DogBox is a self-updating bioinformatics data warehouse allowing scientists to search global repositories of biological information in-house, within their own private networks. Running on a SunFire v20z Dual Opteron server with 4 Gb of RAM backed by Sun StorEdge FC3511 array providing 3 Tb of storage, DogBox is coupled with the SeqHound data warehouse, a freely available resource allowing access to more than a dozen databases, including GenBank, RefSeq and SwissProt sequences, 3D structures, precomputed protein neighbors, redundancies and conserved domain analyses.

<http://www.unleashedinformatics.com/>

Membrane protein research

QBI Life Sciences announces PreserveX-QML Polymeric Micelles to help researchers working with membrane proteins, which represent 70% of all known drug targets. PreserveX-QML consists of a proprietary mixture of amphiphiles designed to resemble the native membrane environment, and can solubilize membrane proteins and preserve their activity, even during extended incubations in multiwell microplate assays. Solubilization with PreserveX-QML produces small, homogeneous particles that can clarify protein solutions, making them suitable for fluorescence-based biochemical assays at multiple wavelengths.