

Chromatography



Liquid chromatography

The Äkta purifier from Pharmacia (Uppsala, Sweden) is optimized to purify peptides, nucleic acids, and oligonucleotides using preset running parameters for approximately 80 prepacked columns. Äkta purifier is controlled and automated by UNICORN v.2.20 software, which can network other Pharmacia chromatography systems for easy transfer of data. Äkta purifier has a fast system start-up including preprogrammed protocols and applications support for all purification techniques.

Tel: +46 18 16 50 00

Fax: +46 18 16 64 22

RSN 994



Chromatography data system

Beckman Instruments (Allendale, NJ) introduces an interface option to the Hewlett-Packard 6890 Gas Chromatograph using the PeakPro C/S Chromatography Data System. The CHROM Link C/S interface provides a bidirectional link between the instrument and a computer, allowing direct control and digital data acquisition using the HP 6890's standard RS 232 C port. The PeakPro C/S

provides centralized control of the gas chromatograph and ensures adherence to laboratory standard operating procedures and assists in GLP compliance. The user can create and edit complete HP 6890 control methods including injector, oven, and detector set points as part of a PeakPro C/S method.

Tel: +1 201 818 8900

Fax: +1 201 818 9740

RSN 995

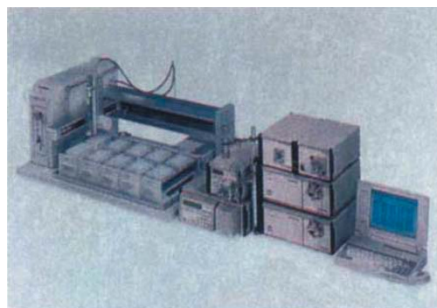
Chromatography catalog

The 300-page 1997 catalog from Chrompack International (Middelburg, The Netherlands) outlines a range of columns and accessories for capillary and packed GC as well as HPLC. It includes new products such as new stationary phases, columns for GC-MS and LC-MS, and accessories such as the FP-meter, which measures gas flow and pressure. The catalogue is available in English, French, and German.

Tel: +31 118 671 000

Fax: +31 118 633 118

RSN 996



Combinatorial chromatography

Gilson's (Middleton, WI) HPLC Combinatorial Chromatography System has expanded its capacity to satisfy the demand for high throughput. The system now accepts up to ten standard or deep-well microplates. Other vessel options are available as well, for processes requiring purification or analysis of larger volumes. The system offers a high level of automation, enabling long, unattended operation. If reanalysis is required, the system can be set to automatically reinject collected fractions once purification has been completed. Another key feature is unique graphic sample tracking software that automatically matches injections, chromatograms, and fractions. The software eliminates the need to count event marks and reduces error.

Tel: +1 608 836 1551

Fax: +1 608 831 4451

RSN 997



Mass selective detector for LC

Hewlett-Packard (Palo Alto, CA) introduces the HP 1100 Series LC/MSD, a benchtop mass selective detector designed for the HP 1100 Series liquid chromatograph that gives laboratories powerful mass spectral information in an easy-to-use, affordably priced system. Features include automatic tuning with built-in calibrant delivery system, fast switching between API-ES and APCI modes, rapid visualization of data, built-in and remote access to diagnostics, and automated quantitation and biomolecule analysis.

Tel: +1 800 227 9770

Fax: +1 415 857 8228

RSN 998



Simulated moving bed chromatography

The LICOSEP-LAB system from NOVASEP (Vandoeuvre-lès-Nancy, France) is a laboratory-scale simulated moving bed chromatographic system. LICOSEP-LAB includes up to 12 identical glass or stainless steel columns with internal diameters of 26 or 48 mm. The system has 5 high pressure pumps, each with a maximum operating pressure of 400 bar (6300 psi) at 200 ml/min. An explosion-proof storage unit and two automatic rotary evaporators are also available for optional eluent recycling and recovery.

Tel: +33 383 44 72 50

Fax: +33 383 44 72 49

RSN 999