

RESOURCES

NEW PRODUCTS

Chromatography

**Prepacked column**

From Amersham Pharmacia Biotech (Uppsala, Sweden), SOURCE 5RPC ST 4.6/150 is a stainless steel column prepacked with high-performance media designed primarily for protein fragment and peptide analysis. Due to their uniform spherical monosized beads, the columns can be used repeatedly without significant loss of resolution or capacity. Columns can also be cleaned in place, and do not need to be changed when running separations at different pHs.

<http://www.apbiotech.com>

RIN: 1225

Preparative chromatography column

Hitachi Instruments' (San Jose, CA) Lock & Load columns for the NovaPrep preparative HPLC product line provide for faster, easier packing and unpacking than conventional prep columns. The unit shares space and cost by sharing the hydraulics used for column packing. In addition, the columns are axial compressed and the piston is locked into place.

<http://www.hii-hitachi.com>

RIN: 1226

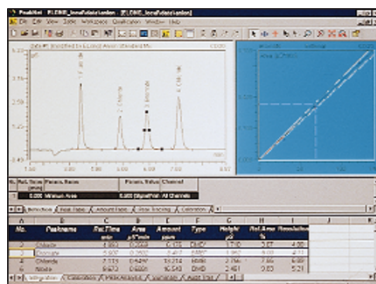
**HPLC system**

The Agilent 1100 Series LC value system from Agilent Technologies (Palo Alto, CA) is a complete system for labs expanding to high-performance liquid chromatography. With its small footprint, manual injector with seven-port sample injection valve, iso-

cratic pump for flow ranges up to 10 ml/min, variable wavelength detector, and state-of-the-art optics, it has everything needed for fast, accurate analyses. In addition, a Windows-based graphical user interface and dedicated software makes operation, diagnostics, and data reporting simple.

<http://www.agilent.com>

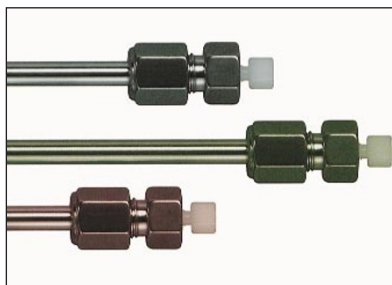
RIN: 1227

**Data handling software**

PeakNet 6 is a software package for Dionex (Sunnyvale, CA) DX-500 and DX-120 ion chromatography systems. Instrument panel displays allow for the real-time monitoring of pumps, detectors, and autosamplers, and a click-and-drag feature makes plotting and viewing data fast and easy. Actions can be monitored or made available to select users for purposes of audits, GLP/GMP, and security.

<http://www.dionex.com>

RIN: 1228

**Columns for drug development**

Vydac SelectaPore HPLC columns from The Separations Group (Hesperia, CA) offer three distinct chemistries using two different C18 chemistries and two pore size silicas for the necessary selectivity essential for new drug development. SelectaPore columns are available in 90Å pore monomeric, and 300Å pore monomeric and polymeric reversed-phase C18. All are stable and produce highly reproducible separations.

<http://www.vydac.com>

RIN: 1229

Fermentors & bioreactors

Pilot plant system

From Adaptive Biosystems (Luton, UK), the Enterprise is a 10–75 liter capacity mini-pilot plant bioreactor for the cultivation of microbial, mammalian, insect, or plant cells. The system is modular, with automated sterilization, and Adaptive's standard 7000 Series instrumentation interfaces with either the BioVIEW measurement control software or OMRON PLC, offered in a 19-inch racking configuration. The Enterprise can be upgraded to integrate with next generation real and virtual sensors as well as existing equipment.

<http://www.adaptive.co.uk>

RIN: 1230

**Biocatysis reactor system**

BioPro International (Farmingdale, NY) offers a novel pressure reactor system for two-liquid phase whole cell cultures. The fed-batch reactor system allows high oxygen transfer rates for the maximization of volumetric productivity in oxygen-limited processes at operation pressures up to 150 psi. The jacketed, in-place-sterilizable bioreactor has a Rushton turbine agitator with double mechanical seal, and also includes feed tanks for acid, base, organic solvent, antifoam agents, and aqueous media, plus two harvest vessels.

<http://www.biopro.com>

RIN: 1231

Parallel fermentation

Fedbatch-pro, from DASGIP mbH (Jülich, Germany), is a modular system for the small-scale parallel fermentation of microorganisms under controlled operating conditions. It allows up to 16 simultaneous fermentations with pH regulation and optional pO₂ monitoring in batch, fedbatch, or continuous culture, and a Microsoft Windows-based control system insures seamless integration with familiar external programs.

<http://www.dasgip.de>

RIN: 1232