

CORRIGENDUM

doi:10.1038/nature19837

Corrigendum: Noncanonical autophagy inhibits the autoinflammatory, lupus-like response to dying cells

Jennifer Martinez, Larissa D. Cunha, Sunmin Park, Mao Yang, Qun Lu, Robert Orchard, Quan-Zhen Li, Mei Yan, Laura Janke, Cliff Guy, Andreas Linkermann, Herbert W. Virgin & Douglas R. Green

Nature **533**, 115–119 (2016); doi:10.1038/nature17950

In Fig. 2a of this Letter, during the preparation of the final figures, the $Cre^{-} Atg5^{ff}$ representative image was inadvertently duplicated in lieu of the $Nox2^{+/+}$ representative image. In Extended Data Fig. 2d, the $Cre^{+} ATG7^{ff}$ representative image for Ki67 immunohistochemical staining was inadvertently duplicated in lieu of the $NOX2^{-/-}$ representative image. We sincerely apologize for these errors. The corrected image for Fig. 2a is shown in Fig. 1 to this Corrigendum, and the corrected Extended Data Fig. 9 is shown in the Supplementary Information. Quantifications in Fig. 2b are unaffected by this error.

Supplementary Information is available in the online version of the Corrigendum.

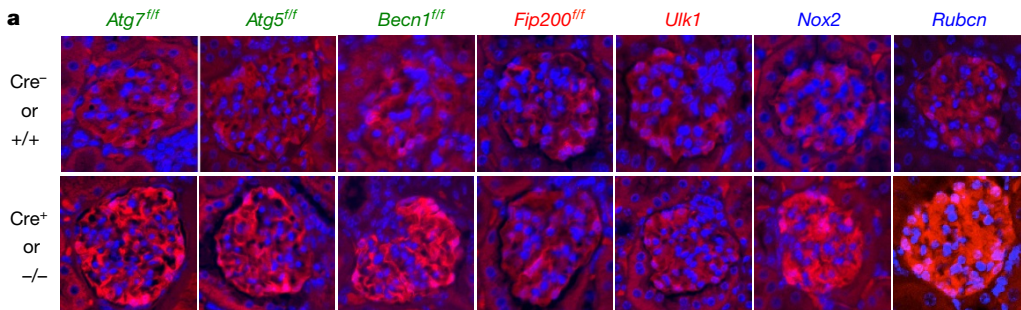


Figure 1 | This shows the corrected Fig. 2a from the original Letter.