

## CORRIGENDUM

doi:10.1038/nature11168

### Corrigendum: Fetal load and the evolution of lumbar lordosis in bipedal hominins

Katherine K. Whitcome, Liza J. Shapiro & Daniel E. Lieberman

*Nature* **450**, 1075–1078 (2007); doi:10.1038/nature06342

In this Letter, Fig. 4a appeared incorrectly (see corrected figure below). The correct equation used to calculate vertebral wedging is:  $2\arctan\left\{\frac{\text{centrum dorsal height} - \text{centrum ventral height}}{2 \times \text{centrum anteroposterior diameter}}\right\}$ , but the correction constant of 2 was inadvertently omitted. As a result, the australopithecine wedging angles reported are half the correct values. However, after correction, our original inference of similarity in sex-related patterns of vertebral wedging among bipedal hominins remains strongly supported. We thank K. Ostrofsky, S. A. Williams and S. Churchill for drawing this error to our attention. Figure 4a has been corrected in the HTML and PDF versions online.

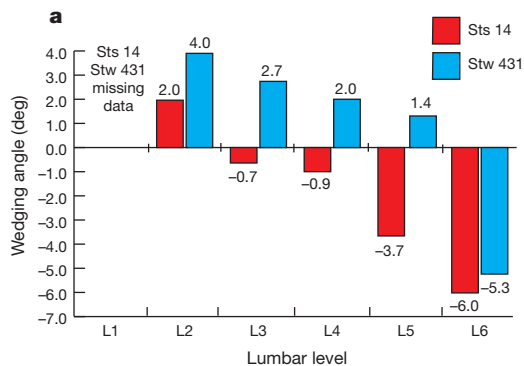


Figure 1 | This is the corrected Fig. 4a of the original Letter.