

---

Errata: *Campylobacter jejuni* impairs sodium transport and epithelial barrier function via cytokine release in human colon

---

R Bücker, SM Krug, V Moos, C Bojarski, MR Schweiger, M Kerick, A Fromm, S Janßen, M Fromm, NA Hering, B Siegmund, T Schneider, C Barmeyer and JD Schulzke

*Mucosal Immunology* (2018) **11**, 575–577; doi:10.1038/mi.2017.78; published online 1 November 2017

**Correction to:** *Mucosal Immunology*, advance online publication 2 August 2017; doi:10.1038/mi.2017.66

The advance online version of this paper was inadvertently published with **Figures 2 and 4** in black and white. The color versions appear below and in the issue version of the paper in print and online. The publisher regrets the error.

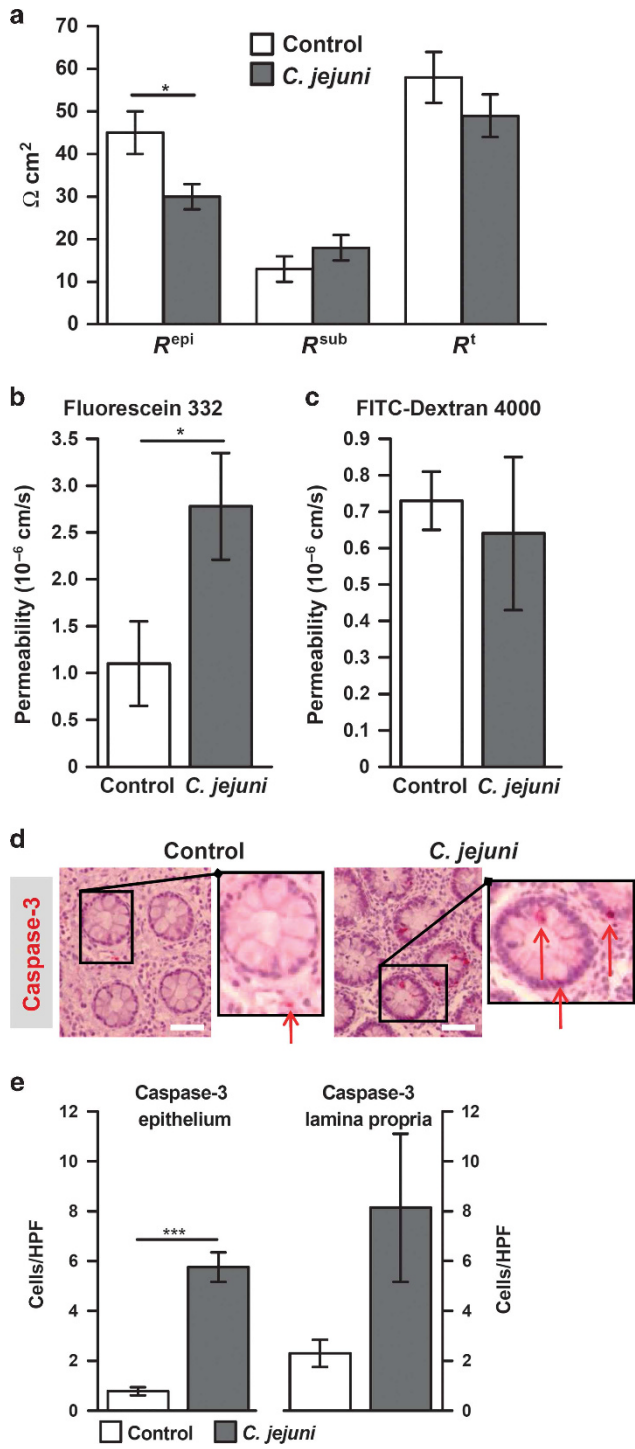


Figure 2

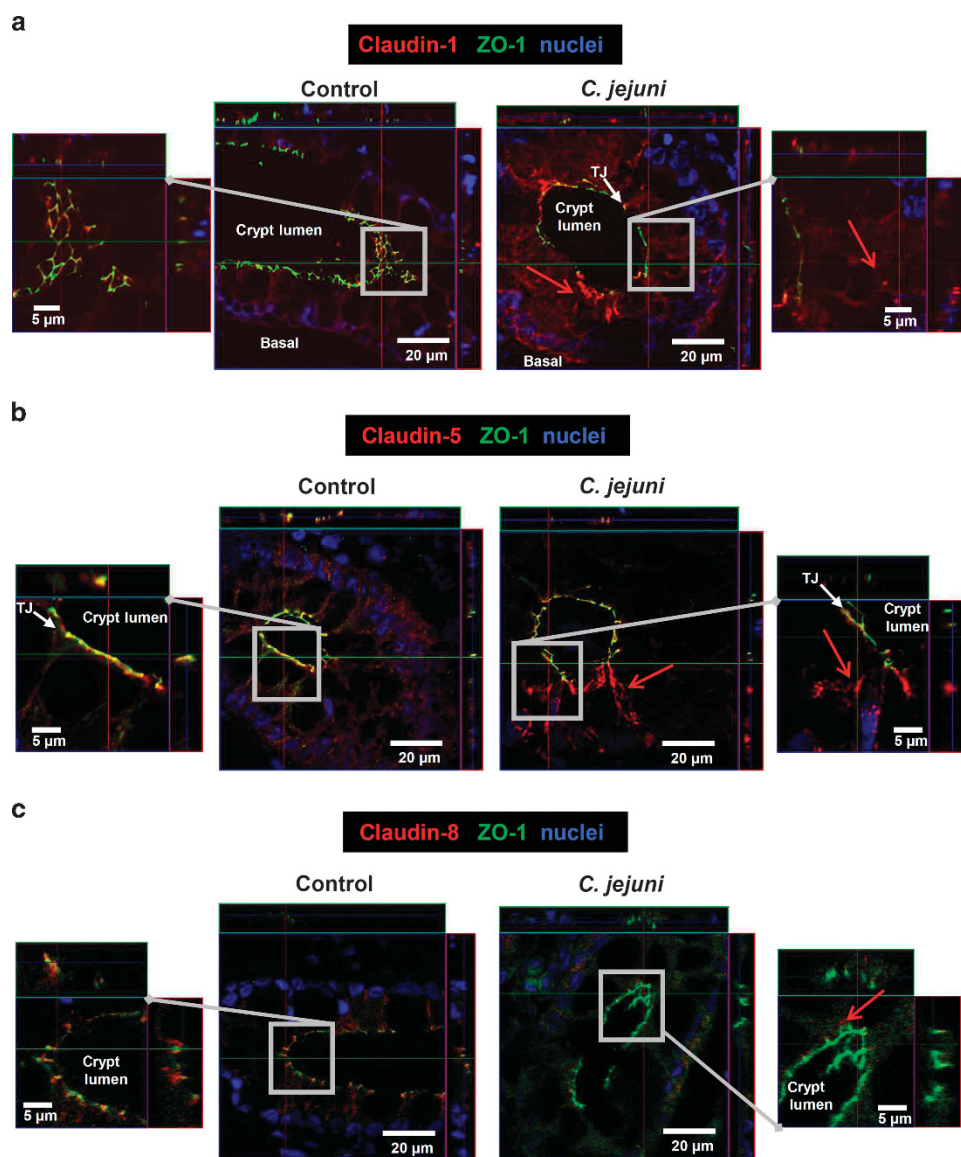


Figure 4

## Errata: IL-33 promotes gastrointestinal allergy in a TSLP-independent manner

H Han, F Roan, LK Johnston, DE Smith, PJ Bryce and SF Ziegler

*Mucosal Immunology* (2018) **11**, 577; doi:10.1038/mi.2017.82; published online 25 October 2017

**Correction to:** *Mucosal Immunology* (2017); advance online publication, 28 June 2017; doi: 10.1038/mi.2017.61

The advance online publication version of this article included a spelling error in the title. The corrected title appears above and in the issue version of the article. The publisher regrets the error.