

# Leptin and mucosal immunity

NM Mackey-Lawrence<sup>1</sup> and WA Petri Jr<sup>1</sup>

Enhanced susceptibility to infection has long been recognized in children with congenital deficiency of leptin or its receptor. Studies in mice have demonstrated that leptin deficiency affects both the innate and acquired immune systems. Here, we review recent studies that demonstrate the impact on immunity of a common non-synonymous polymorphism of the leptin receptor. In a Bangladesh cohort of children, the presence of two copies of the ancestral Q223 allele was significantly associated with resistance to amebiasis. Children and mice with at least one copy of the leptin receptor 223R mutation were more susceptible to amebic colitis. Leptin signaling in the intestinal epithelium and downstream STAT3 (signal transducer and activator of transcription 3) and SHP2 (Src homology phosphatase 2) signaling were required for protection in the murine model of amebic colitis. Murine models have also implicated leptin in protection from other infections, including *Mycobacterium tuberculosis*, *Klebsiella pneumoniae*, and *Streptococcus pneumoniae*. Thus, the role of leptin signaling in infectious disease and specifically leptin-mediated protection of the intestinal epithelium will be the focus of this review.

## INTRODUCTION

At the crossroads between nutrition and immunity lies the adipocytokine leptin. Leptin and its receptor (LepR) are found throughout the central nervous system and the periphery.<sup>1–4</sup> Leptin is produced primarily by adipocytes, but is also produced by a number of other cell types, including gastric and colonic epithelial cells, and T cells, especially during acute inflammation.<sup>5–8</sup> In the central nervous system, leptin controls the appetite by signaling satiety, leading to a reduction in food intake, while also increasing energy expenditure.<sup>1,2</sup> First characterized for its effect on metabolism, leptin is now recognized as an important modulator of both the innate and adaptive immune systems.<sup>5,9–12</sup> Recently, we and others have observed leptin to be a critical factor in mediating resistance to microbial pathogens.<sup>13–19</sup>

## CONGENITAL HUMAN LEPTIN AND LEPR DEFICIENCY

Congenital leptin and LepR deficiencies predominantly affect a handful of highly consanguineous families.<sup>20–25</sup> Leptin deficiency is due to carriage of homozygous mutations such as  $\Delta$ 133G, which result in a truncated leptin molecule that lacks biological activity.<sup>22–24</sup> Similarly, LepR deficiency is often caused by homozygous mutations that affect receptor processing and function (discussed below).<sup>20,21,26</sup> Within affected families, homozygotes for catastrophic mutations in either leptin or LepR

present with similar phenotypes, providing further evidence to the exclusivity of the ligand/receptor interaction. Affected individuals are normal weight at birth, but then rapidly display hyperphagia and early-onset obesity in late infancy (before the first birthday).<sup>20,23</sup> Along with obesity, these individuals possess characteristic phenotypes such as hypogonadism, severely delayed onset of puberty (menses beginning in the third decade), hypothyroidism, and immune dysfunction.<sup>20,22–24</sup> Interestingly, heterozygotes for mutations are not affected in any appreciable way studied and are of normal weight.<sup>20,23,24</sup>

## CONGENITAL LEPTIN AND LepR DEFICIENCY AND IMMUNE DYSFUNCTION

One of the first reports implicating leptin as critical for proper immune function in humans was the observation that family members of leptin-deficient probands with early-onset obesity were ~25 times less likely than normal-weight children to survive childhood. Recurrent infections ultimately led to the death of 7 out of 11 obese children, whereas no children of normal weight from the same family died of childhood diseases.<sup>24</sup> Similarly, obese children in families with homozygous LepR deficiency had greater incidences of respiratory infections, which led to the death of two children.<sup>21</sup> Physiological fluctuations in leptin have also been observed in association with changes in immune status. Increases of leptin concentrations following weight

<sup>1</sup>Division of Infectious Diseases and International Health, Department of Medicine, University of Virginia Health Sciences Center, Charlottesville, Virginia, USA. Correspondence: NM Mackey-Lawrence (nml2n@virginia.edu)

Received 7 March 2012; accepted 1 May 2012; published online 13 June 2012; doi:10.1038/mi.2012.40

gain in previously malnourished children were linked to Th1-mediated responses.<sup>27</sup> In another example, drops in leptin levels during fasting in rheumatoid arthritis patients correlated with a decrease in the activation of CD4 T cells.<sup>28</sup>

Leptin replacement therapy of leptin-deficient individuals provided the first direct evidence for a role of leptin in promoting Th1-mediated immunity. In a replacement study by Farooqi *et al.*,<sup>12</sup> before initiation of treatment, two patients were found to have reduced CD4 T-cell populations (thus a reduced CD4/CD8 ratio), hyporesponsive T cells, severely reduced interferon- $\gamma$  expression, and reduced levels of cytokines such as IL-10 and IL-4, whereas transforming growth factor  $\beta$  was increased. Upon long-term leptin replacement therapy, CD4 numbers, interferon- $\gamma$  expression, and T-cell function were recovered, whereas transforming growth factor  $\beta$  decreased to normal levels. A similar immunophenotype and “recovery” following 48 months of leptin replacement therapy was observed in a young girl. Furthermore, the improved immune function coincided with decreased incidents of (previously) recurring urinary tract infections and perineal dermatitis. The authors also observed improvement of asthma symptoms (no asthma-related hospital visits since 12 months of treatment).<sup>22</sup> Of note, similar immune dysfunction was observed in LepR-deficient individuals as well.<sup>21</sup>

The observations that leptin mediates CD4 T-cell proliferation and acts as a pro-inflammatory cytokine have been further corroborated and expanded upon using *in vitro* analysis of human peripheral blood mononuclear cells and murine models of leptin and LepR deficiency (*ob/ob* and *db/db* mice, respectively). Briefly, leptin has been found to modulate the innate and adaptive responses by repressing proliferation of regulatory T cells, modulating T-cell and monocyte function, enhancing phagocytosis, and coordinating cytokine expression during infection.<sup>9–11,25,29–31</sup> Thus, it is easy to hypothesize that leptin has an active role during infectious disease.

### LepR SIGNALING

There are several identified isoforms of LepR that are divided into short, secreted, or long forms. The long form of the receptor (LepRb) contains all canonical signaling sites, whereas the short forms lack much of the intracellular domain and capacity to signal.<sup>3,4,32,33</sup> LepRb is expressed in numerous cell types, including neurons, intestinal epithelial cells (IECs), and immune cells, such as macrophages, T cells, natural killer cells and polymorphonuclear cells.<sup>6,7,13,14,25,29,31,32,34–36</sup> Upon leptin binding to the extracellular ligand binding domain of the homodimeric LepRb, JAK2 (Janus kinase 2) becomes activated and phosphorylates three tyrosine residues on LepRb (Tyr 985, 1077, and 1138). These phosphorylated tyrosines are in turn recognized by signal transducer and activator of transcription 3 (STAT3), STAT5, and SHP2 (Src homology phosphatase 2), as shown in **Figure 1**. Following phosphorylation of STAT3 and STAT5 by JAK2, there is initiation of multiple downstream signaling events, as depicted in **Figure 1**. pSTAT3 induces expression of SOCS3 (suppressor of cytokine signaling 3) that in turn binds to Tyr 985 and attenuates LepRb signaling, thus providing feedback

inhibition of STAT3 activation.<sup>3,4,33,37–41</sup> Along with SOCS3, leptin-activated pSTAT3 induces cell-type dependent expression of genes important in metabolism and/or inflammation such as pro-opiomelanocortin and IL-6.<sup>3,4,42,43</sup> It has recently been shown that ablation of Tyr 1138-STAT3 signaling, and subsequent deregulation of SOCS3-mediated attenuation, leads to aberrant/enhanced signaling in other pathways downstream of LepRb.<sup>44</sup>

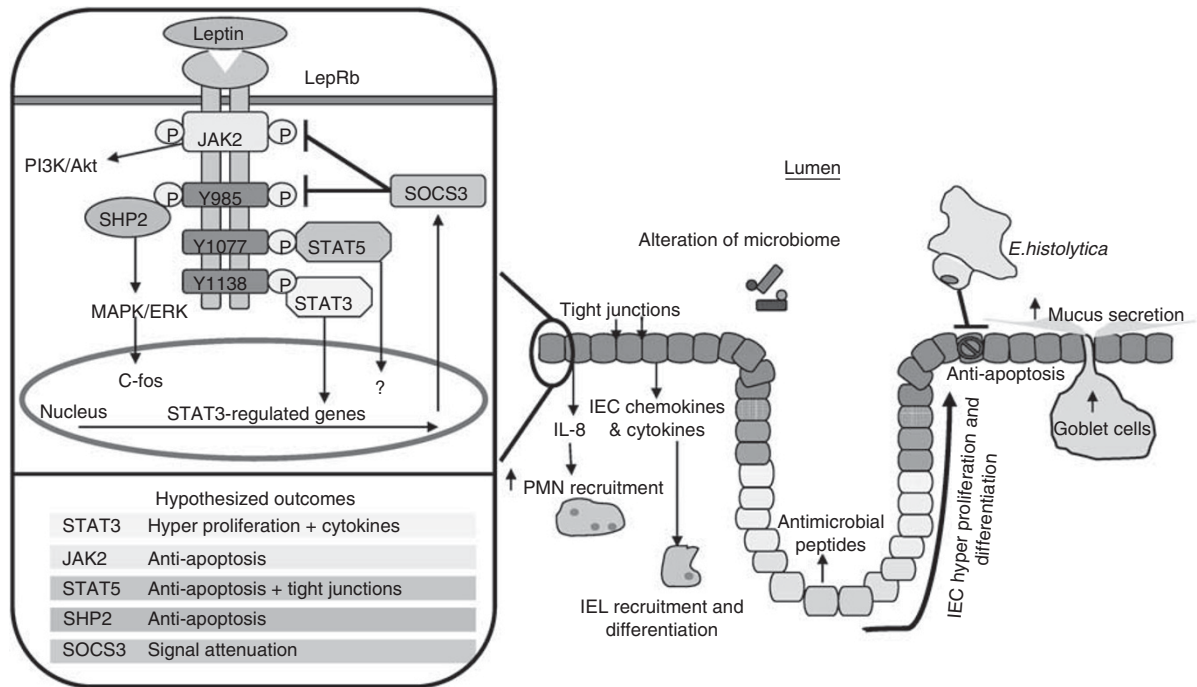
### SINGLE-NUCLEOTIDE POLYMORPHISMS (SNPS) AND THEIR ROLE IN LepR FUNCTION

Complete leptin resistance has been attributed to various frameshift, nonsense, and missense mutations within LepR.<sup>21,26</sup> Four non-synonymous SNPs (A409E, R612H, W664R, and H684P) in the extracellular domain of *LepR* have been characterized by Kimber *et al.*<sup>26</sup> in order to better understand their consequences on LepR signaling. *In vitro* STAT3 reporter assays using cell lines transfected with the mutant receptors showed that three mutant LepRs lacked the ability to respond following leptin binding (A409E, W664R, and H684P), whereas one (R612H) displayed significant but reduced activity. The authors further reported that the decreased activity could be attributed to drastically reduced levels of mutant LepR expression on the cell surface in the case of W664R, H684P, and R612H. A409E had surface expression levels similar to wild-type LepR; however, owing to location within the immunoglobulin-like domain, it was postulated to attenuate receptor activation following leptin binding.<sup>26</sup>

### EXOME SEQUENCING PROJECT IDENTIFIED LepR SNPS

Given the complexity of the LepR signaling cascade and the observation that mutations outside of the binding domain can drastically attenuate signaling, it is easy to imagine that numerous other SNPs or mutations may exist that modulate the signaling capacity of LepR. The NHLBI Exome Sequencing Project has proved to be an excellent tool in identifying naturally occurring SNPs and predicting their potential impact on protein function.<sup>45</sup> Exome Sequencing Project consists of Exome sequence data from 5,379 Americans, subdivided by ethnic origin (European American and African American). The Exome Variant Server, supported by the Exome Sequencing Project, identified 55 non-synonymous SNPs in *LepR*; of these 32 were predicted to be probably or possibly damaging, while the remaining 23 were predicted to be benign. In all, 161 individuals (3%) were found to be homozygous for potentially damaging mutations (Asn656Lys being the most common,  $n = 159$ ).<sup>45</sup>

Of the four reported non-synonymous polymorphisms associated with congenital LepR deficiency, only one, R612H, was identified in heterozygous carriage through the Exome project; however, this is likely due to ethnic differences in the populations sampled.<sup>26,45</sup> Owing to the sizable number of SNPs that are predicted to be potentially damaging to LepR, and the identification of 161 homozygotes, it seems plausible that attenuated LepR signaling and/or partial leptin resistance, if not complete resistance, occurs outside of highly in-bred families. Moreover, SNPs predicted to have benign effects on LepR signaling may actually significantly modulate signaling. We have shown that the most



**Figure 1** Intestinal epithelial cell (IEC) leptin-mediated signaling and protection from amebiasis. LepRb (long form of the leptin receptor) signaling and hypothesized IEC-specific outcomes. Following LepRb-mediated activation, each signaling molecule is hypothesized to have different effects within IECs. JAK2⇒anti-apoptosis; Tyr985⇒SHP2⇒anti-apoptosis; Tyr985⇒SOCS3⇒signal attenuation; Tyr1077⇒STAT5⇒anti-apoptosis and tight junctions; and Tyr1138⇒STAT3⇒hyperproliferation, cytokines and SOCS3. Also depicted are potential leptin-mediated IEC defenses against *E. histolytica*. These include increased goblet cell number and mucus production, induction of anti-apoptotic pathways, proliferation and differentiation of IECs, secretion of antimicrobial peptides, maintenance of tight junctions, expression of chemokines and cytokines, and alteration of the microbiome. ERK, extracellular signal-regulated kinase; IEL, internal elastic lamina; IL, interleukin; JAK, Janus kinase; MAPK, mitogen-activated protein kinase; PMN, polymorphonuclear cell; SHP2, Src homology phosphatase 2; SOCS3, suppressor of cytokine signaling 3; STAT, signal transducer and activator of transcription.

common LepR SNP, Q223R (RR  $n = 1,301$ , QR  $n = 2,631$ , QQ  $n = 1,447$ ), predicted by EVS to be a benign change, is significantly associated with susceptibility to amebiasis (discussed below).<sup>13,41</sup> Therefore, even slight modifications within LepR have profound effects that may determine the progression, severity, and outcome of disease.

**LEPTIN IS A CRITICAL MEDIATOR OF RESISTANCE TO AMEBIASIS**

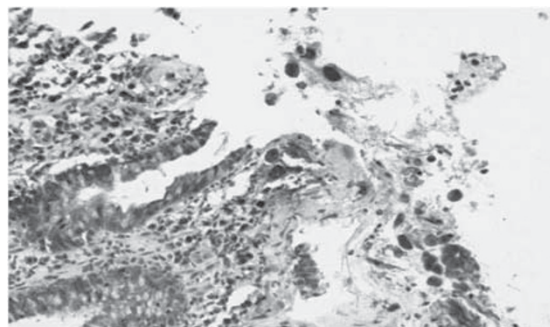
We have found that the Q223R mutation in LepR is associated with the parasitic pathogen, *Entamoeba histolytica*.<sup>13,41</sup> *E. histolytica* is the causative agent of amebic dysentery, amebic diarrhea, and amebic liver abscesses and causes an estimated 100,000 deaths yearly.<sup>19,46</sup> Upon ingestion of cysts found in contaminated water supplies, the parasite undergoes excystation in the intestine where it can then colonize or cause invasive disease.<sup>47-50</sup> Although *E. histolytica* causes severe morbidity and mortality in endemic areas, infection is often self-limiting or asymptomatic.<sup>19,49,51</sup> Owing to the dichotomy that exists between infectious outcomes, we postulated that host factors were involved in mediating disease severity.

We have previously investigated the association of enteric protozoan-related diarrheal illness with the nutritional status and growth of preschool children in Dhaka, Bangladesh. The cohort consisted of 221 children aged 2-5 years who were followed prospectively for diarrheal illness >3 years. Along with incidences

of diarrhea, other parameters such as weight and height were measured. Children with *E. histolytica*-associated diarrhea were 2.9 times more likely to be underweight and 4.7 times more likely to be stunted.<sup>19,52</sup> In agreement with the literature and the role of leptin in metabolism, we found that the malnourished children of the Bangladesh cohort had significantly lower levels of serum leptin.<sup>13</sup> The second piece of evidence linking leptin to amebiasis was immunohistochemistry of biopsies from patients with acute amebic colitis that showed LepR expression in the intestinal epithelium during acute infection (**Figure 2**). Because amebae invade through the intestine by inducing apoptosis of IECs, killing might be blocked by the known anti-apoptotic and pro-proliferative functions of leptin. We hypothesized that the low levels of leptin could account for the increased susceptibility of malnourished children to amebiasis. In order to test our hypothesis, further studies in both human and mice were undertaken (discussed below).

Through a 9-year prospective study of *E. histolytica* infection in a cohort of children (enrolled at preschool age), we found increased susceptibility associated with the Q223R SNP in LepR. Interestingly, the Q223R polymorphism is located in the cytokine receptor homology domain 1 of LepR, outside of the known binding domain. Children with at least one arginine allele (223R) were nearly four times more likely to have an *E. histolytica* infection compared with those homozygous for the glutamine allele (223Q).<sup>13</sup> The Q223R association persisted after

Leptin receptor (brown) is expressed in the intestinal epithelium in amebic colitis (*E. histolytica* stained red)



**Figure 2** Leptin receptor (LepR) is expressed in the intestinal epithelium during amebic colitis. Immunohistochemistry of a colonic biopsy from a patient with acute amebic colitis demonstrates LepR staining (brown) of intestinal epithelium and infiltrating white blood cells and invading *E. histolytica* trophozoites (red). Figure credit: Kristine M. Peterson, Robert Gilman, and William A. Petri Jr.

accounting for malnutrition, sex, and age and was also found to be significantly associated with adult amebic liver abscesses.<sup>13</sup> Although observations made in individuals with congenital leptin deficiency or complete leptin resistance suggested that leptin signaling could have a potential role in infectious diseases, these studies were the first to show a direct association of a LepR mutation with human infection.

#### SITE AND MECHANISM OF LepR SIGNALING IN *E. HISTOLYTICA* INFECTION

Murine infection models were utilized in order to delineate the mechanism of leptin-mediated resistance to *E. histolytica*. Our initial studies (in the C57BL/6 background) demonstrated that leptin-deficient (*ob/ob*) and LepRb-deficient (*db/db*) mice were highly susceptible to infection with *E. histolytica*, whereas wild-type C57BL/6 were resistant.<sup>13,14</sup> Similar to human studies, we found that mice either homozygous or heterozygous for the 223R allele of LepR were significantly more susceptible to amebic infection. Infected 223R animals exhibited greater pathology with increases in IEC apoptosis and mucosal destruction.<sup>13</sup> These studies provided rationale for further use of murine models to delve into the mechanisms behind the leptin effect.

Bone marrow chimeras were created from wild-type and *db/db* mice in order to define the cellular compartment affected by leptin. Surprisingly, these mice demonstrated that LepRb signaling in bone marrow-derived cells was not responsible for the susceptibility observed in *db/db* mice. As LepRb is expressed in IECs during infection, mice with IEC-specific deletion of LepRb (*vil-cre* LepR) were created and found to be significantly more susceptible to infection with *E. histolytica* when compared with wild-type littermate controls.<sup>13,14</sup> Thus, the primary cell type responsible for leptin-mediated resistance was identified as IECs.

The study of the downstream signaling pathways important for LepRb-mediated resistance identified that signaling through both LepRb/Tyr 985 and 1138 was critical for protection from *E. histolytica* challenge in the murine model. Although both

mice exhibited increased susceptibility to *E. histolytica* challenge, dramatic differences in phenotype were observed. Specifically, greater mucosal damage occurred in the S1138 mice, whereas the L985 mice exhibited minimal mucosal damage with higher levels of mucosal hyperplasia.<sup>14</sup> These observations suggest that leptin signaling activates more than one pathway to promote resistance to *E. histolytica*. To delve further into the molecular events following activation of LepRb, *in vitro* studies utilizing knock-in mutants of LepR tyrosines at 985, 1077, and 1138 were performed. These experiments showed that STAT3 signaling via Tyr 1138 was essential for leptin-mediated cellular resistance to *E. histolytica* killing *in vitro*. Interestingly, these studies have also shown that the 223R LepRb is significantly impaired in activation of STAT3 following leptin binding.<sup>41</sup> Taken together, these studies demonstrated that leptin-mediated protection against *E. histolytica* required signaling through (at least) Tyrs 985 and 1138.

#### LEPTIN AND OTHER MODELS OF INFECTIOUS DISEASE

Using murine models, leptin has been found to modulate disease during infection with other important human pathogens. Studies in *ob/ob* and *db/db* mice have shown that leptin is important for a successful host response against *Mycobacterium tuberculosis*.<sup>15</sup> A recent study by Lemos *et al.*,<sup>15</sup> found that *db/db* mice infected with *M. tuberculosis* exhibited a dysregulated immune response and subsequently, impaired bacterial containment. The cellular compartment responsible for the susceptible phenotype was outside of bone marrow-derived cells, which led them to hypothesize that leptin was acting at other sites, one of which could be the pulmonary epithelium, as alveolar type I and II epithelial and bronchial epithelial cells have been found to express LepRb.<sup>44</sup>

Although there is now evidence for leptin signaling in IECs providing protection from amebic infection, leptin signaling in immune cells may also be important in other infectious diseases. Interestingly, Mancuso *et al.*<sup>18</sup> found that acute leptin depletion via fasting of wild-type animals for 48 h lead to an increase in *Streptococcus pneumoniae* load. Using an *ex vivo* murine infection model, Moore *et al.*<sup>16</sup> found that neutrophils from leptin-deficient mice were significantly attenuated for opsonophagocytosis of *Klebsiella pneumoniae*, an effect that could be reversed upon exogenous leptin administration (both *in vivo* and *in vitro*). Similarly, alveolar macrophages from *ob/ob* mice were impaired in their ability to phagocytose *S. pneumoniae* and polymorphonuclear cells displayed a reduction in killing. Again, administration of leptin restored proper effector functions in these cells.<sup>17</sup> Alveolar macrophages express LepRb, and are capable of activating STAT3 following stimulation with leptin. Abrogation of STAT3 signaling of LepRb by mutation of the Tyr 1138 led to protection from *S. pneumoniae*, an effect that was linked to increased production of leukotrienes in alveolar macrophages.<sup>44</sup> These studies and others indicate the potential for leptin signaling in both epithelial cells and immune cells in response to infection.

#### MECHANISMS OF LEPTIN-MEDIATED PROTECTION IN IECs

Downstream effects of LepR signaling vary depending upon cell type. In IECs, leptin signaling has been shown to have numerous

effects that could inhibit or protect against host-cell killing by *E. histolytica* (Figure 1). *E. histolytica* predominantly kills host cells via induction of host-cell apoptosis, and LepRb signaling significantly increases anti-apoptotic pathways.<sup>13,14,53–55</sup> We have recently shown that *in vitro* leptin signaling via STAT3 activation at Tyr 1138 leads to differential regulation of numerous apoptotic genes.<sup>41</sup> These expression changes could account for the increased cellular resistance exhibited during challenge with *E. histolytica*. Leptin also induces IEC expression of antimicrobial peptides.<sup>56,57</sup> Peterson *et al.*<sup>56</sup> demonstrated that the defensin RegI, which is produced by IECs and induces epithelial repair, could be another mechanism of leptin-mediated defense.<sup>37</sup> Additional potential mechanisms by which leptin may protect the intestine from infection include: (1) increased goblet cell number and mucus secretion;<sup>57,58</sup> (2) leptin signaling through STAT5 that could potentially lead to the strengthening and maintenance of tight junctions, preventing parasitic invasion, and dissemination;<sup>59</sup> and (3) change in the gut microbiome.<sup>60,61</sup>

In addition to intrinsic IEC defenses, LepRb signaling can lead to the production and secretion of pro-inflammatory cytokines and chemokines such as interleukin (IL)-6, IL-1 $\beta$ , CXCL-1 (chemokine (C-X-C motif) ligand 1), and IL-8, which attract and cause infiltration of immune cells such as neutrophils and T cells.<sup>42,43,62</sup> Furthermore, leptin stimulation may have a role in T-cell differentiation. For example, leptin modulates IEC production of IL-6, which in turn activates STAT3 in naive T-helper cells that subsequently leads to differentiation into Th-17 cells.<sup>42,63–65</sup>

### CRITICAL ROLE OF STAT3

There is no doubt that leptin has many unique functions, especially within the neuroendocrine axis. However, it appears that many of the functions attributed to leptin in the epithelium are similar or redundant to effects of other cytokines. For example, leptin has been shown to be a critical mediator of restitution following injury to the epithelium, likewise, IL-6, IL-27, and IL-22 have also been found to have roles in wound healing.<sup>66–71</sup> Furthermore, IL-31, like leptin, has been shown to induce IEC expression of cytokines (IL-8), while IL-22 can enhance expression of antimicrobial peptides (RegIII).<sup>69,72,73</sup> The common denominator of all these effects is STAT3. Numerous cytokine receptors, summarized in Figure 3, activate STAT3 resulting in a myriad of downstream effects.<sup>66–80</sup> The importance and pleiomorphic role of STAT3 is illustrated by the autosomal-dominant hyper-IgE (immunoglobulin E) syndrome (also known as Job's syndrome), which is caused by dominant negative mutations within *stat3*. Autosomal-dominant hyper-IgE syndrome presents with numerous sequelae both immune and somatic, but is primarily an immunodeficiency with recurrent pneumonias, boils, dermatitis, very little or no Th-17 T cells, and high levels of IgE.<sup>81–83</sup> In murine models, tissue-specific deletions have shown STAT3 to be important in cancer, immunity, and wound healing.<sup>71,81–83</sup> Thus, similarities between downstream effects of leptin and other cytokines may, in part, be due to STAT3 signaling.

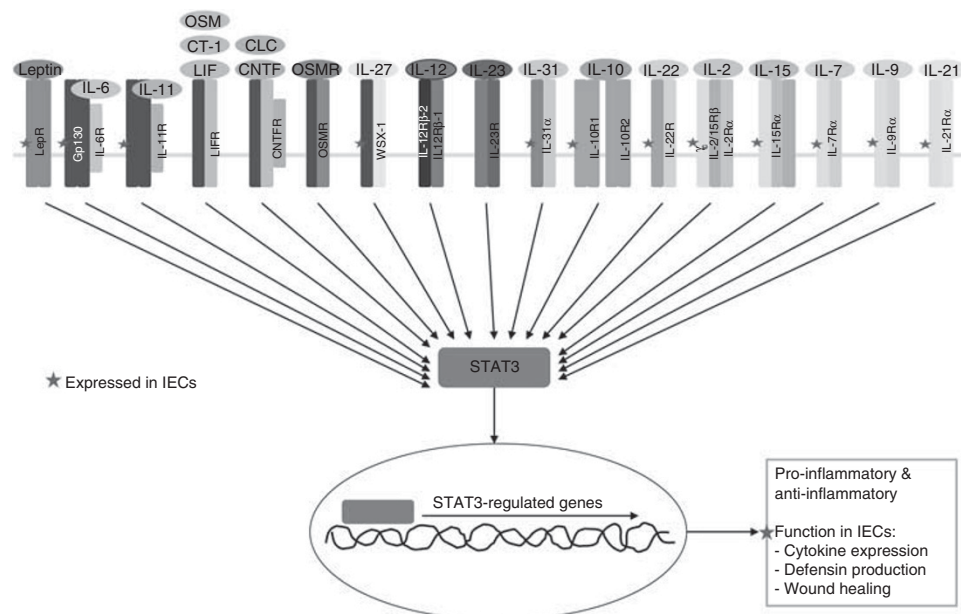
### WITH SO MUCH REDUNDANCY, IS THE EFFECT OF LEPTIN ON EPITHELIAL CELLS UNIQUE?

IL-22, a member of the IL-10 family of cytokines, acts upon epithelial cells to promote cellular defenses. As discussed above, IL-22 shares many redundant functions with leptin, including induction of antimicrobial peptide production by epithelial cells and promotion of wound healing. Also like leptin, IL-22 signaling in epithelial cells leads to expression of anti-apoptotic genes and increased cellular proliferation.<sup>66,69,84–87</sup> Although leptin and IL-22 appear to have similar roles, the context in which they act is important. For example, leptin signaling during infection with *M. tuberculosis* was important for regulation of the immune response and bacterial containment.<sup>15</sup> By contrast, Wilson *et al.*,<sup>86</sup> recently found IL-22 to be dispensable for an appropriate immune response to numerous pathogens, including *M. tuberculosis*. Furthermore, *ob/ob* mice lacking leptin are protected against dextran sulfate sodium colitis, while IL-22<sup>-/-</sup> mice showed more severe pathology.<sup>42,87</sup> Thus, the circumstances in which these cytokines act is critical and allow for a fine-tuned and seamless immune response.

### SUMMARY

As a signal for starvation, leptin has an essential role in the regulation of metabolic functions.<sup>1,2</sup> Moreover, leptin has been shown to be a critical immunomodulator in both humans and murine models.<sup>5,9–12</sup> Observational evidence for the importance of leptin in infectious disease was first described due to leptin and LepR-deficient individuals having numerous recurrent infections and high amounts of mortality owing to childhood diseases.<sup>21,24</sup> Our laboratory has demonstrated an association of human disease with leptin, via the Q223R polymorphism in LepR.<sup>13</sup> Furthermore, using murine infection models we have found that leptin signaling in the intestinal epithelium is a mediator of protection against *E. histolytica*.<sup>14</sup> Similarly, recent studies of infectious lung diseases have shown a role for leptin in protection against *M. tuberculosis*, *K. pneumoniae*, and *S. pneumoniae*.<sup>15–18,44</sup> Interestingly, there appears to be a dichotomy in leptin protection, wherein the leptin effect has been found to be significant both within and outside of the immune compartment.

Beyond those affected with congenital leptin deficiency and complete leptin resistance, SNPs in *LepR* can have dramatic effects on leptin signaling, as we have shown an association of the Q223R polymorphism with amebiasis.<sup>13,41</sup> Owing to the large number of SNPs identified through the NHLBI Human Exome Sequence Project it is easy to envision how carriage of SNPs can modify or attenuate LepR signaling, thus potentially affecting host resistance to a myriad of significant diseases such as amebiasis, tuberculosis, and bacterial pneumonias.<sup>45</sup> Factors other than genetics, such as nutritional status, affect leptin levels. Both obesity and malnutrition are pandemics associated with immunodeficiencies that lead to increased susceptibility to infectious disease.<sup>88–90</sup> Interestingly, both obesity and malnutrition are associated with aberrant leptin levels, obesity causing chronically elevated levels, whereas malnutrition results in significantly diminished leptin levels. Given the significant impact



**Figure 3** Cytokines that activate STAT3 (signal transducer and activator of transcription 3). Schematic representation of cytokine receptors that activate STAT3. Cytokines included are leptin, interleukin (IL)-6, IL-11, OSM (oncostatin M), CT-1 (cardiotrophin-1), LIF (leukemia inhibitory factor), CLC (cardiotrophin-like cytokine), CNTF (ciliary neurotrophic factor), OSMR (OSM receptor), IL-27, IL-12, IL-23, IL-31, IL-10, IL-22, IL-2, IL-7, IL-9, IL-15, and IL-21. Janus kinase (JAK)–STAT pathway activation results in phosphorylation of STAT3 (pSTAT3) and translocation of pSTAT3 to the nucleus where it activates the transcription of target genes. Receptors noted by a red star are known to be expressed in intestinal epithelial cells (IECs) and are predicted to induce cytokine and defensin (antimicrobial peptide) expression and augment wound healing. GP130, glycoprotein 130; LepR, leptin receptor.

leptin signaling has on both immune and epithelial cells, the increased rates of infection observed in obese and malnourished individuals suggests that dysregulated leptin signaling may be a critical contributor to the altered immune state in these conditions. Thus, further research into the cellular targets of leptin and the downstream effector functions mediated through LepR are critical in understanding how leptin functions outside of the neuroendocrine axis and affects host susceptibility to disease.

#### ACKNOWLEDGMENTS

We thank the Petri lab members and Lantz Mackey for critical reading of this manuscript. We apologize to those whose excellent work was not able to be included in this review owing to space limitations. This work was supported by funding through NIH grant R01 AI026649 (WAP). Nicole Mackey-Lawrence was supported by the Research Training in Digestive Diseases fellowship 2T32DK007769-11.

#### DISCLOSURE

The authors declared no conflict of interest.

© 2012 Society for Mucosal Immunology

#### REFERENCES

- Das, U.N. Obesity: genes, brain, gut, and environment. *Nutrition* **26**, 459–473 (2010).
- Myers, M.G., Cowley, M.A. & Munzberg, H. Mechanisms of leptin action and leptin resistance. *Annu. Rev. Physiol.* **70**, 537–556 (2008).
- Leininger, G.M. & Myers, M.G. Jr. LRB signals act within a distributed network of leptin-responsive neurons to mediate leptin action. *Acta. Physiol. (Oxf.)* **192**, 49–59 (2008).
- Myers, M.G. Jr. Leptin receptor signaling and the regulation of mammalian physiology. *Recent Prog. Horm. Res.* **59**, 287–304 (2004).
- Lago, R., Gomez, R., Lago, F., Gomez-Reino, J. & Gualillo, O. Leptin beyond body weight regulation—current concepts concerning its role in immune function and inflammation. *Cell Immunol.* **252**, 139–145 (2008).
- Faggioni, R., Feingold, K.R. & Grunfeld, C. Leptin regulation of the immune response and the immunodeficiency of malnutrition. *FASEB J.* **15**, 2565–2571 (2001).
- Fantuzzi, G. & Faggioni, R. Leptin in the regulation of immunity, inflammation, and hematopoiesis. *J. Leukoc. Biol.* **68**, 437–446 (2000).
- Sitarman, S. *et al.* Colonic leptin: source of a novel proinflammatory cytokine involved in IBD. *FASEB J.* **18**, 696–698 (2004).
- De Rosa, V. *et al.* A key role of leptin in the control of regulatory T cell proliferation. *Immunity* **26**, 241–255 (2007).
- Fernandez-Riejos, P. *et al.* Role of leptin in the activation of immune cells. *Mediators Inflamm.* **2010**, 568343 (2010).
- Otero, M. *et al.* Towards a pro-inflammatory and immunomodulatory emerging role of leptin. *Rheumatology (Oxford)* **45**, 944–950 (2006).
- Farooqi, I.S. *et al.* Beneficial effects of leptin on obesity, T cell hyporesponsiveness, and neuroendocrine/metabolic dysfunction of human congenital leptin deficiency. *J. Clin. Invest.* **110**, 1093–1103 (2002).
- Duggal, P. *et al.* Leptin mediates mucosal immunity to *Entamoeba histolytica* infection in children. *J. Clin. Invest.* **121**, 1191–1198 (2010).
- Guo, X. *et al.* Leptin signaling in intestinal epithelium mediates resistance to enteric infection by *Entamoeba histolytica*. *Mucosal Immunol.* **4**, 294–303 (2010).
- Lemos, M.P., Rhee, K.Y. & McKinney, J.D. Expression of the leptin receptor outside of bone marrow-derived cells regulates tuberculosis control and lung macrophage MHC expression. *J. Immunol.* **187**, 3776–3784 (2011).
- Moore, S.I., Huffnagle, G.B., Chen, G.H., White, E.S. & Mancuso, P. Leptin modulates neutrophil phagocytosis of *Klebsiella pneumoniae*. *Infect. Immun.* **71**, 4182–4185 (2003).
- Hsu, A., Aronoff, D.M., Phipps, J., Goel, D. & Mancuso, P. Leptin improves pulmonary bacterial clearance and survival in ob/ob mice during pneumococcal pneumonia. *Clin. Exp. Immunol.* **150**, 332–339 (2007).
- Mancuso, P., Huffnagle, G.B., Olszewski, M.A., Phipps, J. & Peters-Golden, M. Leptin corrects host defense defects after acute starvation

- in murine pneumococcal pneumonia. *Am. J. Respir. Crit. Care Med.* **173**, 212–218 (2006).
19. Petri, W.A. Jr, Mondal, D., Peterson, K.M., Duggal, P. & Haque, R. Association of malnutrition with amebiasis. *Nutr. Rev.* **67** (Suppl 2), S207–S215 (2009).
  20. Clement, K. *et al.* A mutation in the human leptin receptor gene causes obesity and pituitary dysfunction. *Nature* **392**, 398–401 (1998).
  21. Farooqi, I.S. *et al.* Clinical and molecular genetic spectrum of congenital deficiency of the leptin receptor. *N. Engl. J. Med.* **356**, 237–247 (2007).
  22. Gibson, W.T. *et al.* Congenital leptin deficiency due to homozygosity for the Delta133G mutation: report of another case and evaluation of response to four years of leptin therapy. *J. Clin. Endocrinol. Metab.* **89**, 4821–4826 (2004).
  23. Montague, C.T. *et al.* Congenital leptin deficiency is associated with severe early-onset obesity in humans. *Nature* **387**, 903–908 (1997).
  24. Ozata, M., Ozdemir, I.C. & Licinio, J. Human leptin deficiency caused by a missense mutation: multiple endocrine defects, decreased sympathetic tone, and immune system dysfunction indicate new targets for leptin action, greater central than peripheral resistance to the effects of leptin, and spontaneous correction of leptin-mediated defects. *J. Clin. Endocrinol. Metab.* **84**, 3686–3695 (1999).
  25. Bluher, S., Shah, S. & Mantzoros, C.S. Leptin deficiency: clinical implications and opportunities for therapeutic interventions. *J. Investig. Med.* **57**, 784–788 (2009).
  26. Kimber, W. *et al.* Functional characterization of naturally occurring pathogenic mutations in the human leptin receptor. *Endocrinology* **149**, 6043–6052 (2008).
  27. Palacio, A., Lopez, M., Perez-Bravo, F., Monkeberg, F. & Schlesinger, L. Leptin levels are associated with immune response in malnourished infants. *J. Clin. Endocrinol. Metab.* **87**, 3040–3046 (2002).
  28. Fraser, D.A., Thoen, J., Reseland, J.E., Forre, O. & Kjeldsen-Kragh, J. Decreased CD4+ lymphocyte activation and increased interleukin-4 production in peripheral blood of rheumatoid arthritis patients after acute starvation. *Clin. Rheumatol.* **18**, 394–401 (1999).
  29. Lord, G.M., Matarese, G., Howard, J.K., Baker, R.J., Bloom, S.R. & Lechler, R.I. Leptin modulates the T-cell immune response and reverses starvation-induced immunosuppression. *Nature* **394**, 897–901 (1998).
  30. Mancuso, P., Canetti, C., Gottschalk, A., Tihofer, P.K. & Peters-Golden, M. Leptin augments alveolar macrophage leukotriene synthesis by increasing phospholipase activity and enhancing group IVC iPLA2 (cPLA2gamma) protein expression. *Am. J. Physiol. Lung Cell. Mol. Physiol.* **287**, L497–L502 (2004).
  31. Sanchez-Margalet, V. & Martin-Romero, C. Human leptin signaling in human peripheral blood mononuclear cells: activation of the JAK-STAT pathway. *Cell. Immunol.* **211**, 30–36 (2001).
  32. Hansen, G.H., Niels-Christiansen, L.L. & Danielsen, E.M. Leptin and the obesity receptor (OB-R) in the small intestine and colon: a colocalization study. *J. Histochem. Cytochem.* **56**, 677–685 (2008).
  33. Fruhbeck, G. Intracellular signalling pathways activated by leptin. *Biochem. J.* **393** (Pt 1), 7–20 (2006).
  34. Suzukawa, M. *et al.* Leptin enhances survival and induces migration, degranulation, and cytokine synthesis of human basophils. *J. Immunol.* **186**, 5254–5260 (2011).
  35. Barrenetxe, J. *et al.* Distribution of the long leptin receptor isoform in brush border, basolateral membrane, and cytoplasm of enterocytes. *Gut* **50**, 797–802 (2002).
  36. Wrann, C.D. *et al.* Short-term and long-term leptin exposure differentially affect human natural killer cell immune functions. *Am. J. Physiol. Endocrinol. Metab.* **302**, E108–E116 (2012).
  37. Kanda, N. & Watanabe, S. Leptin enhances human beta-defensin-2 production in human keratinocytes. *Endocrinology* **149**, 5189–5198 (2008).
  38. Villanueva, E.C. & Myers, M.G. Jr Leptin receptor signaling and the regulation of mammalian physiology. *Int. J. Obes. (Lond.)* **32** (Suppl 7), S8–S12 (2008).
  39. Pai, R., Lin, C., Tran, T. & Tarnawski, A. Leptin activates STAT and ERK2 pathways and induces gastric cancer cell proliferation. *Biochem. Biophys. Res. Commun.* **331**, 984–992 (2005).
  40. Ogunwobi, O.O. & Beales, I.L. The anti-apoptotic and growth stimulatory actions of leptin in human colon cancer cells involves activation of JNK mitogen activated protein kinase, JAK2 and PI3 kinase/Akt. *Int. J. Colorectal Dis.* **22**, 401–409 (2007).
  41. Marie, C.S., Verkerke, H.P., Paul, S.N., Mackey, A.J. & Petri, W.A. Jr. Leptin protects host cells from *Entamoeba histolytica* cytotoxicity by a STAT-3 dependent mechanism. *Infect. Immun.* **226**, 2123–2130 (2012).
  42. Siegmund, B., Lehr, H.A. & Fantuzzi, G. Leptin: a pivotal mediator of intestinal inflammation in mice. *Gastroenterology* **122**, 2011–2025 (2002).
  43. Padidar, S. *et al.* Leptin upregulates pro-inflammatory cytokines in discrete cells within mouse colon. *J. Cell. Physiol.* **226**, 2123–2130 (2010).
  44. Mancuso, P. *et al.* Disruption of leptin receptor-STAT3 signaling enhances leukotriene production and pulmonary host defense against pneumococcal pneumonia. *J. Immunol.* **186**, 1081–1090 (2011).
  45. Exome Variant Server In: (ESP) NESP (ed). Seattle, WA.
  46. WHO. WHO News and Activities: *Entamoeba* Taxonomy, 291–292 (1997).
  47. Ghosh, P.K., Gupta, S., Naik, S., Ayyagari, A. & Naik, S.R. Effect of bacterial association on virulence of *Entamoeba histolytica* to baby hamster kidney cell monolayers. *Indian J. Exp. Biol.* **36**, 911–915 (1998).
  48. Variyam, E.P. Luminal host-defense mechanisms against invasive amebiasis. *Trends Parasitol.* **23**, 108–111 (2007).
  49. Baxt, L.A. & Singh, U. New insights into *Entamoeba histolytica* pathogenesis. *Curr. Opin. Infect. Dis.* **21**, 489–494 (2008).
  50. Pritt, B.S. & Clark, C.G. Amebiasis. *Mayo Clin. Proc.* **83**, 1154–1159; quiz 1159–1160 (2008).
  51. Mortimer, L. & Chadee, K. The immunopathogenesis of *Entamoeba histolytica*. *Exp. Parasitol.* **126**, 366–380 (2010).
  52. Mondal, D., Haque, R., Sack, R.B., Kirkpatrick, B.D. & Petri, W.A. Jr. Attribution of malnutrition to cause-specific diarrheal illness: evidence from a prospective study of preschool children in Mirpur, Dhaka, Bangladesh. *Am. J. Trop. Med. Hyg.* **80**, 824–826 (2009).
  53. Bruno, A., Conus, S., Schmid, I. & Simon, H.U. Apoptotic pathways are inhibited by leptin receptor activation in neutrophils. *J. Immunol.* **174**, 8090–8096 (2005).
  54. Sukhotnik, I. *et al.* Leptin affects intestinal epithelial cell turnover in correlation with leptin receptor expression along the villus-crypt axis after massive small bowel resection in a rat. *Pediatr. Res.* **66**, 648–653 (2009).
  55. Sukhotnik, I. *et al.* Leptin accelerates enterocyte turnover during methotrexate-induced intestinal mucositis in a rat. *Cancer Biol. Ther.* **8**, 899–906 (2009).
  56. Peterson, K. *et al.* The role of the intestinal epithelial protein REG 1 in protection from *Entamoeba histolytica* colitis. *Infect. Immun.* **60**, 296–300 (2010).
  57. Plaisancie, P. *et al.* Luminal leptin activates mucin-secreting goblet cells in the large bowel. *Am. J. Physiol. Gastrointest. Liver Physiol.* **290**, G805–G812 (2006).
  58. El Homsy, M. *et al.* Leptin modulates the expression of secreted and membrane-associated mucins in colonic epithelial cells by targeting PKC, PI3K, and MAPK pathways. *Am. J. Physiol. Gastrointest. Liver Physiol.* **293**, G365–G373 (2007).
  59. Han, X. *et al.* Regulation of intestinal barrier function by signal transducer and activator of transcription 5b. *Gut* **58**, 49–58 (2009).
  60. Turnbaugh, P.J., Ley, R.E., Mahowald, M.A., Magrini, V., Mardis, E.R. & Gordon, J.I. An obesity-associated gut microbiome with increased capacity for energy harvest. *Nature* **444**, 1027–1031 (2006).
  61. Ley, R.E., Backhed, F., Turnbaugh, P., Lozupone, C.A., Knight, R.D. & Gordon, J.I. Obesity alters gut microbial ecology. *Proc. Natl. Acad. Sci. USA* **102**, 11070–11075 (2005).
  62. Abolhassani, M. *et al.* Leptin receptor-related immune response in colorectal tumors: the role of colonocytes and interleukin-8. *Cancer Res.* **68**, 9423–9432 (2008).
  63. Hruz, P., Dann, S.M. & Eckmann, L. STAT3 and its activators in intestinal defense and mucosal homeostasis. *Curr. Opin. Gastroenterol.* **26**, 109–115 (2010).
  64. Wu, S. *et al.* A human colonic commensal promotes colon tumorigenesis via activation of T helper type 17 T cell responses. *Nat. Med.* **15**, 1016–1022 (2009).
  65. Chaudhry, A. *et al.* CD4+ regulatory T cells control TH17 responses in a Stat3-dependent manner. *Science* **326**, 986–991 (2009).
  66. Rutz, S. & Ouyang, W. Regulation of interleukin-10 and interleukin-22 expression in T helper cells. *Curr. Opin. Immunol.* **23**, 605–612 (2011).
  67. Neurath, M.F. New therapies for sepsis: focus on the interleukin (IL)12 family member IL27. *Ann. Rheum. Dis.* **66** (Suppl 3), iii29–iii31 (2007).

68. Diegelmann, J., Olszak, T., Goke, B., Blumberg, R.S. & Brand, S. A novel role for interleukin-27 (IL-27) as mediator of intestinal epithelial barrier protection mediated via differential signal transducer and activator of transcription (STAT) protein signaling and induction of antibacterial and anti-inflammatory proteins. *J. Biol. Chem.* **287**, 286–298 (2012).
69. Pickert, G. *et al.* STAT3 links IL-22 signaling in intestinal epithelial cells to mucosal wound healing. *J. Exp. Med.* **206**, 1465–1472 (2009).
70. Jones, S.A., Scheller, J. & Rose-John, S. Therapeutic strategies for the clinical blockade of IL-6/gp130 signaling. *J. Clin. Invest.* **121**, 3375–3383 (2011).
71. Li, Y. *et al.* Disease-related expression of the IL6/STAT3/SOCS3 signalling pathway in ulcerative colitis and ulcerative colitis-related carcinogenesis. *Gut* **59**, 227–235 (2010).
72. Dambacher, J. *et al.* Interleukin 31 mediates MAP kinase and STAT1/3 activation in intestinal epithelial cells and its expression is upregulated in inflammatory bowel disease. *Gut* **56**, 1257–1265 (2007).
73. Zheng, Y. *et al.* Interleukin-22 mediates early host defense against attaching and effacing bacterial pathogens. *Nat. Med.* **14**, 282–289 (2008).
74. Ma, L.J., Acero, L.F., Zal, T. & Schluns, K.S. Trans-presentation of IL-15 by intestinal epithelial cells drives development of CD8 $\alpha$  $\alpha$  IELs. *J. Immunol.* **183**, 1044–1054 (2009).
75. Caruso, R. *et al.* A functional role for interleukin-21 in promoting the synthesis of the T-cell chemoattractant, MIP-3 $\alpha$ , by gut epithelial cells. *Gastroenterology* **132**, 166–175 (2007).
76. Denning, T.L. *et al.* Expression of IL-10 receptors on epithelial cells from the murine small and large intestine. *Int. Immunol.* **12**, 133–139 (2000).
77. Ropeleski, M.J., Tang, J., Walsh-Reitz, M.M., Musch, M.W. & Chang, E.B. Interleukin-11-induced heat shock protein 25 confers intestinal epithelial-specific cytoprotection from oxidant stress. *Gastroenterology* **124**, 1358–1368 (2003).
78. Reinecker, H.C. & Podolsky, D.K. Human intestinal epithelial cells express functional cytokine receptors sharing the common gamma c chain of the interleukin 2 receptor. *Proc. Natl. Acad. Sci. USA* **92**, 8353–8357 (1995).
79. Waldmann, T.A. The biology of interleukin-2 and interleukin-15: implications for cancer therapy and vaccine design. *Nat. Rev. Immunol.* **6**, 595–601 (2006).
80. Paul, W.E. *Fundamental Immunology*, 6th edn. (Wolters Kluwer/Lippincott Williams & Wilkins: Philadelphia, 2008) xviii, 1603 p., 1616 p. of platespp.
81. Holland, S.M. *et al.* STAT3 mutations in the hyper-IgE syndrome. *N. Engl. J. Med.* **357**, 1608–1619 (2007).
82. Freeman, A.F. & Holland, S.M. Clinical manifestations, etiology, and pathogenesis of the hyper-IgE syndromes. *Pediatr. Res.* **65** (5 Pt 2), 32R–37R (2009).
83. Levy, D.E. & Loomis, C.A. STAT3 signaling and the hyper-IgE syndrome. *N. Engl. J. Med.* **357**, 1655–1658 (2007).
84. Cella, M. *et al.* A human natural killer cell subset provides an innate source of IL-22 for mucosal immunity. *Nature* **457**, 722–725 (2009).
85. Taube, C. *et al.* IL-22 is produced by innate lymphoid cells and limits inflammation in allergic airway disease. *PLoS One* **6**, e21799 (2011).
86. Wilson, M.S. *et al.* Redundant and pathogenic roles for IL-22 in mycobacterial, protozoan, and helminth infections. *J. Immunol.* **184**, 4378–4390 (2010).
87. Zenewicz, L.A., Yancopoulos, G.D., Valenzuela, D.M., Murphy, A.J., Stevens, S. & Flavell, R.A. Innate and adaptive interleukin-22 protects mice from inflammatory bowel disease. *Immunity* **29**, 947–957 (2008).
88. Black, R.E. *et al.* Maternal and child undernutrition: global and regional exposures and health consequences. *Lancet* **371**, 243–260 (2008).
89. Karlsson, E.A. & Beck, M.A. The burden of obesity on infectious disease. *Exp. Biol. Med. (Maywood)* **235**, 1412–1424 (2010).
90. Stienstra, R. *et al.* Inflammasome is a central player in the induction of obesity and insulin resistance. *Proc. Natl. Acad. Sci. USA* **108**, 15324–15329 (2011).