

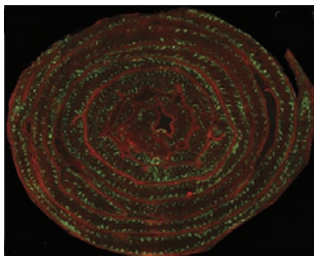
p 537

## SFB and arthritis

In News and Highlights, Charlotte Kaetzel examines a recent study demonstrating an essential role for segmented filamentous bacteria in the development of autoimmune arthritis in a murine model driven by autoantibodies and T helper type 17 cells. [See page 536](#)

## iBALT and immunity in the lung

Inducible bronchus-associated lymphoid tissue (iBALT) develops in response to infection and inflammation. Shen Yun Foo and Simon Phipps discuss the generation and function of this unique ectopic immune compartment. [See page 537](#)



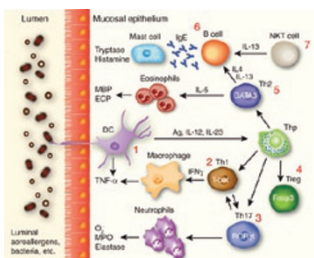
p 556

## Topical immunization

Cecil Czerkinsky and Jan Holmgren address topical vaccine strategies to target mucosal infections at various anatomical sites. [See page 545](#)

## Mucosal adjuvants and memory

Nils Lycke and Mats Bemark discuss how adjuvants from the adenosine diphosphate–ribosylating toxin family can be effective in driving long-term B- and T-cell memory responses that are key to mucosal vaccine efficacy. [See page 556](#)



p 567

## T-bet in mucosal homeostasis

Nicholas Powell and coauthors review findings indicating an essential role for the transcription factor T-bet (T-box factor expressed in T cells) in regulating innate and adaptive immunity at mucosal surfaces. [See page 567](#)

## Myeloid-suppressor cells control Th2 responses in the lung

Meenakshi Arora and colleagues show that lipopolysaccharide exposure controls house dust mite–driven airway eosinophilia and T helper type 2

cytokine production by driving the development of suppressive CD11b Gr1 F4/80 cells. [See page 578](#)

## T-cell phenotypes in celiac disease

Michael Bodd and colleagues demonstrate that gluten-reactive, tetramer-positive CD4<sup>+</sup> T cells from the peripheral blood and small-intestine biopsies of patients with celiac disease produce interleukin (IL)-21 and interferon- $\gamma$ , but not IL-17 or IL-22, as has been suggested by others.

[See page 594](#)

## Psoriasis defends against *E. coli*

Michael Mildner *et al.* identify psoriasis (S100A7) in human vaginal fluid as a major factor in innate defense against *Escherichia coli*. [See page 602](#)

## First cloning of equine J chain and plgR

Melanie Lewis and colleagues report the initial cloning of equine J chain and polymeric immunoglobulin receptor (plgR). They also generated recombinant forms of equine immunoglobulin A and secretory component and analyzed their interaction. [See page 610](#)

## Epithelial cell sensing of rotavirus

Amena Frias and co-workers show that type I interferon–dependent antiviral responses in intestinal epithelial cells are independent of viral replication but require both viral structural proteins and viral RNA. [See page 622](#)

## Crmd attenuates TNF-driven colitis

Abel Viejo-Borbolla and colleagues demonstrate that intestinal expression of ectromelia virus cytokine response modifier D (Crmd), a protein that binds tumor necrosis factor (TNF)- $\alpha$  and some chemokines, was able to attenuate colitis development in TNF <sup>$\Delta$ ARE</sup> mice. [See page 633](#)