

p 209

## Segmented filamentous bacteria

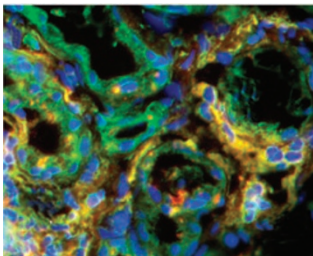
In their Commentary, Ivaylo Ivanov and Dan Littman discuss the role of microbiota in determining the balance in the intestine between T helper type 17 and regulatory T cell populations. [See page 209](#)

## Tregs and infections

Beth Wohlfert and Yasmine Belkaid comment on new findings demonstrating the flexibility of regulatory T cell functions at sites of infection. [See page 213](#)

## Control of asthma by Tregs

In this insightful review, Anuradha Ray and colleagues discuss how naturally occurring and induced regulatory T cells control asthma at different stages of life. [See page 216](#)



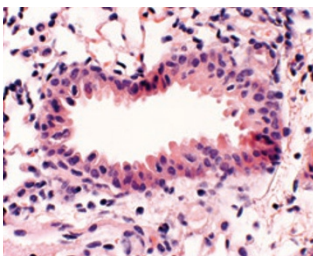
p 260

## TGF- $\beta$ -induced *Foxp3* expression

Lili Xu and colleagues discuss the molecular mechanisms by which transforming growth factor- $\beta$  drives the expression of *Foxp3*. [See page 230](#)

## Regulatory function of IL-10 from effector T cells

Dragana Jankovic and colleagues describe the regulation of immune pathology by autocrine self-regulatory production of interleukin-10 by T helper type 1 cells. [See page 239](#)



p 291

## Essentials of intestinal permeability

The intestinal epithelium controls the entry of ions, nutrients, and macromolecules and also provides an essential barrier to the entry of microorganisms. Sandrine Ménard and colleagues review the structural and functional aspects of intestinal permeability in both health and disease. [See page 247](#)

## Gastric DCs and *Helicobacter pylori*

Diane Bimczok and colleagues implicate gastric dendritic cells in the induction of T helper type 1 cell responses to *H. pylori*. [See page 260](#)

## Statin-induced lipoxin A<sub>4</sub>

Anna Planagumà and colleagues describe how lovastatin triggers the generation of anti-inflammatory 15-epi-lipoxin A<sub>4</sub> in both human leukocyte airway epithelial cell cultures and a murine model of airway inflammation. [See page 270](#)

## Early HIV infection in an ex vivo tissue model

Elisa Saba and colleagues, using an optimized ex vivo model of cervico-vaginal HIV infection, describe the preferential infection of CD4<sup>+</sup> T cells in distinct differentiation and activation states by HIV variants. [See page 280](#)

## Control of RSV by alternatively activated macrophages

Kari Ann Shirey and colleagues describe the molecular pathways that allow respiratory syncytial virus infection to induce alternatively activated macrophage phenotypes that are beneficial to resolution of infection. [See page 291](#)

## IL-12 alleviates Th17-mediated allergic lung inflammation

Douglas Durrant and Dennis Metzger present a potential therapeutic application of interleukin (IL)-12 in a model of T helper type 17 cell-mediated allergic lung inflammation. [See page 301](#)

## Th17 cells in *Neisseria gonorrhoeae* genital infection

Brandon Feinen and colleagues demonstrate an important role for T helper type 17 cells in controlling gonorrhea infection in a murine model of this common sexually transmitted disease. [See page 312](#)