

## CORRIGENDUM

# RUNX1 mutations in acute myeloid leukemia are associated with distinct clinico-pathologic and genetic features

VI Gaidzik, V Teleanu, E Papaemmanuil, D Weber, P Paschka, J Hahn, T Wallrabenstein, B Kolbinger, CH Köhne, HA Horst, P Brossart, G Held, A Kündgen, M Ringhoffer, K Götze, M Rummel, M Gerstung, P Campbell, JM Kraus, HA Kestler, F Thol, M Heuser, B Schlegelberger, A Ganser, L Bullinger, RF Schlenk, K Döhner and H Döhner for the German-Austrian Acute Myeloid Leukemia Study Group (AMLSSG)

*Leukemia* (2016) 30, 2282; doi:10.1038/leu.2016.207

**Correction to:** *Leukemia* (2016) 30, 2160–2168; doi:10.1038/leu.2016.126; published online 10 June 2016

Following the publication of this paper, the authors noted that one of the curves of the Kaplan–Meier plot in Figure 3b was labeled incorrectly. In the corrected figure below,  $RUNX1^{mut}$  ( $n = 1693$ ) has been corrected to  $RUNX1^{wt}$  ( $n = 1693$ ).

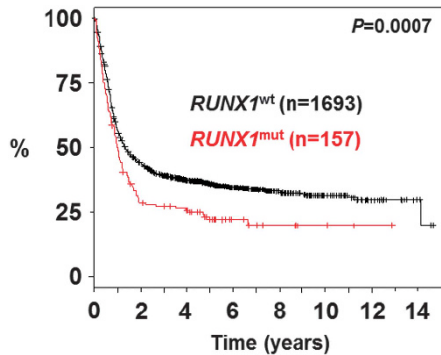


Figure 3b.