

## ORIGINAL ARTICLE

# Coral transcriptome and bacterial community profiles reveal distinct Yellow Band Disease states in *Orbicella faveolata*

Collin J Closek<sup>1,2</sup>, Shinichi Sunagawa<sup>3</sup>, Michael K DeSalvo<sup>4</sup>, Yvette M Piceno<sup>5</sup>, Todd Z DeSantis<sup>6</sup>, Eoin L Brodie<sup>5</sup>, Michele X Weber<sup>1,2</sup>, Christian R Voolstra<sup>7</sup>, Gary L Andersen<sup>5</sup> and Mónica Medina<sup>1,2</sup>

<sup>1</sup>Department of Biology, The Pennsylvania State University, University Park, PA, USA; <sup>2</sup>School of Natural Sciences, University of California, Merced, CA, USA; <sup>3</sup>Structural and Computational Biology Unit, European Molecular Biology Laboratory, Heidelberg, Germany; <sup>4</sup>Phalanx Biotech Group Inc., San Diego, CA, USA; <sup>5</sup>Center for Environmental Biotechnology, Lawrence Berkeley National Laboratory, Berkeley, CA, USA; <sup>6</sup>Second Genome Inc., South San Francisco, CA, USA and <sup>7</sup>Red Sea Research Center, King Abdullah University of Science and Technology (KAUST), Thuwal, Saudi Arabia

**Coral diseases impact reefs globally. Although we continue to describe diseases, little is known about the etiology or progression of even the most common cases. To examine a spectrum of coral health and determine factors of disease progression we examined *Orbicella faveolata* exhibiting signs of Yellow Band Disease (YBD), a widespread condition in the Caribbean. We used a novel combined approach to assess three members of the coral holobiont: the coral-host, associated *Symbiodinium* algae, and bacteria. We profiled three conditions: (1) healthy-appearing colonies (HH), (2) healthy-appearing tissue on diseased colonies (HD), and (3) diseased lesion (DD). Restriction fragment length polymorphism analysis revealed health state-specific diversity in *Symbiodinium* clade associations. 16S ribosomal RNA gene microarrays (PhyloChips) and *O. faveolata* complimentary DNA microarrays revealed the bacterial community structure and host transcriptional response, respectively. A distinct bacterial community structure marked each health state. Diseased samples were associated with two to three times more bacterial diversity. HD samples had the highest bacterial richness, which included components associated with HH and DD, as well as additional unique families. The host transcriptome under YBD revealed a reduced cellular expression of defense- and metabolism-related processes, while the neighboring HD condition exhibited an intermediate expression profile. Although HD tissue appeared visibly healthy, the microbial communities and gene expression profiles were distinct. HD should be regarded as an additional (intermediate) state of disease, which is important for understanding the progression of YBD.**

The ISME Journal (2014) 8, 2411–2422; doi:10.1038/ismej.2014.85; published online 20 June 2014

**Subject Category:** Microbe-microbe and microbe-host interactions

**Keywords:** 16S rRNA gene; *Orbicella faveolata*; *Montastraea faveolata*; PhyloChip; coral reefs; yellow band blotch disease

## Introduction

Corals engage in symbioses with a diverse array of microbes (Douglas, 1998; Wegley *et al.*, 2007). Tropical corals thrive in nutrient-limited waters largely owing to their symbioses (Muscatine and Porter, 1977). Recent analysis of this complex metaorganism (that is, the coral holobiont) revealed great microbial diversity (Rohwer *et al.*, 2002). One member of this holobiont, that many tropical and

sub-tropical corals harbor, is a unicellular alga of the genus *Symbiodinium*, which harnesses light energy and transfers fixed carbon and other organic compounds to the coral-host (Trench, 1979). In addition, corals harbor a large diversity of bacteria, some of which appear to be host-specific (Rohwer *et al.*, 2001; Sunagawa *et al.*, 2010; Roder *et al.*, 2014). Of the ones that have been studied, many are beneficial to the holobiont by promoting coral health, defense and nitrogen fixation (Lesser *et al.*, 2004; Ritchie, 2006; Chimetto *et al.*, 2008; Alagely *et al.*, 2011; Lema *et al.*, 2012). These recent findings highlight the importance of deepening our understanding of host–microbe interactions in coral reef environments (Ainsworth *et al.*, 2009; Mouchka *et al.*, 2010), yet high throughput genomic analyses have revealed

Correspondence: CJ Closek or M Medina, Department of Biology, The Pennsylvania State University, 208 Mueller Lab Building, University Park, PA 16802, USA.

E-mail: closek@gmail.com or monicamedina@psu.edu

Received 24 December 2013; revised 30 March 2014; accepted 8 April 2014; published online 20 June 2014

that most of the coral-associated bacteria are unclassified (Sunagawa *et al.*, 2010).

In the last 50 years, coral reef ecosystems have drastically declined (Wilkinson, 2008). Since the mid-1970s (Dustan, 1977) coral disease events have become pervasive throughout the world's oceans (Sutherland *et al.*, 2004; Weil *et al.*, 2006; Bourne *et al.*, 2009). Anthropogenic pressures such as increasing sea surface temperatures, coastal development, depletion of fisheries and high-nutrient effluents, impact coral health and exacerbate disease outbreaks (Bruno *et al.*, 2003; Cervino *et al.*, 2004; Bruno *et al.*, 2007; Brandt and McManus, 2009). Metagenomic approaches have revealed higher numbers of potentially pathogenic bacteria along gradients of anthropogenic activity (Vega Thurber *et al.*, 2009). As human activities increase both locally and globally, reef systems continue to decline (Pandolfi *et al.*, 2003; Hughes *et al.*, 2010).

In recent decades, the Caribbean Sea has become a disease hotspot (Dustan, 1977) and its shallow reefs are the most impacted worldwide (Bourne *et al.*, 2009). Many coral diseases manifest themselves in necrosis of the coral tissue followed by macroalgal colonization of the bare skeleton (Richardson, 1998; Knowlton and Jackson, 2008). Continuous episodes of disease can ultimately lead to a macroalgal-dominated reef with major consequences for biodiversity and the survival of scleractinian corals (Bruckner and Bruckner, 2006; Knowlton and Jackson, 2008).

One common disease in the Caribbean is Yellow Band Disease (YBD), also known as 'Yellow Blotch Disease'. YBD was first noted off the coast of the Florida Keys in 1994 (Reeves, 1994) and has since been identified throughout the region. In some reefs, as high as 88% of *Orbicella* spp. colonies exhibited signs of YBD (Richards Dona *et al.*, 2008). YBD has been reported for the *Orbicella annularis* species complex, *Montastraea cavernosa*, and the *Colpophyllia natans* species complex (Bruckner and Bruckner, 2006). *Orbicella* spp. (formerly part of the genus *Montastraea*, but recently reclassified to the *Orbicella* genus (Budd *et al.*, 2012)) are major reef-building species. Coral die-offs driven by YBD have detrimental, long-term consequences for Caribbean reefs (Gardner *et al.*, 2003). YBD is characterized by a 1–5 cm wide, yellow to white, circular band that radiates outwards (Reeves, 1994). As it progresses, necrotic tissue sloughs off exposing the denuded skeleton. The band has been recorded to spread about 0.6 cm per month (Cervino *et al.*, 2001), a relatively slow rate of progression compared with other coral diseases, for example, White Plague Disease typically progresses by 0.3–2 cm per day (Richardson, 1998). However, YBD lesions are often seen on multiple areas of a colony and can persist over multiple seasons until a large portion of or the entire colony is decimated. The gradient of yellow to white band color is a result of declining algal symbiont densities (Cervino *et al.*, 2001). Cervino *et al.* (2004) identified four *Vibrio* spp. as the putative causative agents for

YBD using traditional isolation and culturing techniques. Recently, YBD has been reported to affect other coral species in the Indo-Pacific, that is, *Diploastrea heliopora*, *Fungia* spp. and *Herpolitha* spp. (Cervino *et al.*, 2008).

Given the rapid reef decline worldwide, there is a pressing need for novel approaches for coral disease diagnostics (Pollock *et al.*, 2011). Both bacterial and *Symbiodinium* community composition have been assessed in some coral diseases (Cervino *et al.*, 2004). However, the host physiological response has been evaluated mainly in the context of thermal stress (DeSalvo *et al.*, 2008; Barshis *et al.*, 2013) and never in conjunction with microbial community profiling. Host transcriptome profiling can enhance our understanding of how corals are responding to disease outbreak. We combine these three approaches, that is, bacterial taxonomic profiling, *Symbiodinium* genotyping, and host transcriptome response to gain insight into the dynamics of YBD in the coral *Orbicella faveolata*. 16S ribosomal RNA gene microarrays, known as 'PhyloChips', provide a culture independent method to monitor relative abundance of a set of bacterial taxa under different conditions (Brodie *et al.*, 2006), and have been extensively used in different biological systems (Wu *et al.*, 2010; Mendes *et al.*, 2011), including corals (Sunagawa *et al.*, 2009b; Kellogg *et al.*, 2012; Roder *et al.*, 2014). Coral transcriptome profiling has been used to examine differential gene expression under multiple physiological and developmental conditions (DeSalvo *et al.*, 2008; Voolstra *et al.*, 2009a,b; Portune *et al.*, 2010; Bellantuono *et al.*, 2012; Kaniewska *et al.*, 2012; Barshis *et al.*, 2013). Herein we extend the use coral complimentary DNA (cDNA) microarrays to examine host response to disease.

To our knowledge this is the first study to examine multiple facets of the holobiont in a range of health states, including healthy-appearing tissue neighboring the disease lesion. This approach aimed to allow a better understanding of the progression of YBD and to provide insights into part of the coral holobiont's response. We show that beyond visual signs of a disease, the associated microbiome and coral-host transcriptome dramatically shift in *O. faveolata*. The combination of molecular tools used identified associated bacterial taxa and genes that distinguish samples, which appear phenotypically healthy, from healthy colonies. These results advance our understanding of YBD progression and could be used to design an early screen for detecting elevated transcription of key genes as well as presence of indicator taxa highlighted herein.

## Materials and methods

### Sample collection and preparation

We collected skeletal-tissue cores of *O. faveolata* on 2 September 2008 along the coast of Puerto Morelos,

Mexico. Samples were collected using hammer and corer (2 cm diameter) by SCUBA at an average depth of 6 m at Los Jardines reef in Puerto Morelos National Marine Park (N 20.831230, W 86.874350). We collected a total of 12 samples from eight colonies: one set of samples from four healthy colonies (HH), which exhibited no visually apparent signs of stress or impacted health and two sample sets from four diseased colonies; one set of four samples from the advancing disease lesion (DD), yellowish tissue interface adjacent to the recently denuded skeleton; and one set of samples from neighboring tissue which had no apparent physical signs of disease (HD) 30–90 cm from the lesion, on the same coral colonies.

Using SCUBA we sampled each colony underwater and cores were placed into Whirl-Pak bags (Nasco, Fort Atkinson, WI, USA). The samples were transferred to the boat, quickly rinsed with filtered seawater, wrapped in aluminum foil and subsequently flash-frozen in a liquid nitrogen dry shipper. At UC Merced, excess skeleton was removed with mallet and sterile chisel. The residual upper tissue/skeleton (<0.5 cm) layer was ground into a homogenous powder using a sterilized mortar and pestle cooled to  $-78.5^{\circ}\text{C}$ . The entire homogenization process took place on dry ice.

#### *DNA extraction and generation of 16S ribosomal DNA amplicons*

From each sample, we added 50 mg of frozen homogenized coral powder to a screw-cap tube. We performed DNA extractions as described in the study by Sunagawa *et al.* (2010). We amplified 16S ribosomal RNA genes in 100  $\mu\text{l}$  reactions using the extracted DNA (20 ng), 0.8  $\mu\text{M}$  of the universal primers 27 F (5'-AGAGTTTGATCCTGGCTCAG-3') and 1492 R (5'-GGTTACCTTGTTACGACTT-3'), Platinum *Taq* DNA Polymerase High Fidelity (0.4  $\mu\text{l}$ ), and PCR buffer (Invitrogen, Grand Island, NY, USA). We ran gradient amplifications (annealing temperatures from 48 to 60  $^{\circ}\text{C}$ ) using 25 cycles. We purified pooled products for a given sample with the MinElute Kit (Qiagen, Valencia, CA, USA), and hybridized them to third generation (G3) PhyloChips (Second Genome, South San Francisco, CA, USA) as described in the study by Hazen *et al.* (2010).

#### *PhyloChip hybridization*

The 16S ribosomal RNA G3 PhyloChip was expanded to contain multiple oligonucleotide probes to identify across 59 222 operational taxonomic units (OTUs), representing a majority of the known diversity in Bacteria and Archaea. The PhyloChip was designed to track population dynamics in the majority of known bacterial and archaeal taxa from publically available databases (Wu *et al.*, 2010), which included 943 identified *O. faveolata*-associated sequences (Sunagawa *et al.*, 2009b).

We used a total of 230 ng of pooled gradient amplicon products from each sample for hybridization. One sample, HH4, did not yield sufficient PCR product for PhyloChip analysis. For the remaining samples, we followed published procedures for sample preparation for hybridization (Wu *et al.*, 2010). PhyloChips were washed and stained following Affymetrix (Santa Clara, CA, USA) protocols. PhyloChips were scanned as previously described (Wu *et al.*, 2010).

#### *PhyloChip data analysis*

We generated CEL files from probe fluorescence intensities of the scanned microarrays using PhyloChip Analysis parameters (Wu *et al.*, 2010) through Stage 1 for taxa selection, allowing unclassified microbial taxa (OTUs) to be included in the output files. Hybridization fluorescence intensities were scaled to the internal spike mix to allow comparison across samples. OTUs present in three or more samples under each condition were used for subsequent analyses. Presence/absence calling of each was based on positive hybridization of multiple probes that correspond to an OTU (average of 37 probes per OTU). The resulting fluorescence data were  $\log_2$  transformed.

We used the Bioconductor package 'limma' (Smyth, 2004) for further analysis in R;  $\log_2$ -transformed values were compared using pair-wise comparisons. Results were filtered at a  $P$ -value  $\leq 0.05$  and a log fold change (FC)  $\geq 2$ . The data were loaded into MeV v4.6.1 (TM4, Boston, MA, USA) (Saeed *et al.*, 2003) for visualization.

#### *Symbiodinium 18S amplification and clade identification*

*Symbiodinium* 18S ribosomal RNA gene fragments were amplified using universal forward primer ss5 (5'-GGTTGATCCTGCCAGTAGTCATATGCTTG-3'), *Symbiodinium*-specific reverse primer ss3z (5'-AGC ACTGCGTCAGTCCGAATAATTCACCGG-3') (Rowan and Powers, 1991) and Platinum *Taq* DNA Polymerase High Fidelity. The amplified fragments were digested with *TaqI* restriction enzyme (Promega, Madison, WI, USA), ran on a 1% agarose gel, and compared across *Symbiodinium* A–D clade standards following the protocol by Rowan and Knowlton (1995).

#### *Host genotyping*

We assessed clonal similarities using the methods described in the study by Davies *et al.* (2013). The eight coral colonies sampled proved to be genets. No clones were identified, as assessed by nine microsatellite markers: maMS8\_CAA, Mfav5\_CGA, Mfav7\_CAT, Mfav3\_ATG, Mfav4\_TTTG, Mfav6\_CA, Mfav9\_CAAT, Mfav30\_TTTTG and Mfav8\_CAA.

*RNA extraction and amplification for coral cDNA arrays*  
From each frozen homogenized coral sample described above, we isolated total RNA using QIAzol Lysis Reagent (Qiagen), two chloroform extractions, subsequent isopropanol precipitation and two successive 70% ethanol washes. RNA pellets were redissolved in 100  $\mu$ l of nuclease-free water and quantified using a ND1000 (NanoDrop, Wilmington, DE, USA). The samples were concentrated using 3 M sodium acetate and ethanol precipitation, and further purified using the RNeasy MinElute Cleanup Kit (Qiagen). RNA quality was assessed with a 2100 Bioanalyzer (Agilent, Santa Clara, CA, USA). With the modified steps outlined in the study by DeSalvo *et al.* (2008, 2012), we amplified 1  $\mu$ g of total RNA using the MessageAmp II aRNA kit (Ambion, Foster City, CA, USA).

#### *Composition of pooled reference sample and hybridization of cDNA*

A total of 3  $\mu$ g of amplified RNA from each sample was reverse transcribed into cDNA and purified with the RNeasy MinElute Kit. Equal amounts of amplified RNA aliquots from each sample comprised the pooled reference. Reference and individual samples were labeled with Cy-3 and Cy-5 dyes, respectively. After fluorescent labeling, we purified samples with the RNeasy MinElute Kit to remove any excess dye.

The second generation (G2) *O. faveolata* cDNA microarray slides, referred here on as cDNA microarrays, were designed and printed with 10 930 features at UC Merced's Genome Core Facility (Aranda *et al.*, 2011). We post-processed, hybridized and scanned the *O. faveolata* cDNA microarray slides as described in the study by DeSalvo *et al.* (2012). Each of the 12 samples from the three health states (that is, HH, HD, DD) were competitively hybridized against a pooled reference sample. After overnight hybridization, slides were immediately transferred to individual falcon tubes containing wash buffers (0.6  $\times$  saline-sodium citrate (SSC) and 0.01% SDS, followed by 0.06  $\times$  SSC) to remove non-specific hybridization and unbound excess cDNAs. Slides were scanned using an Axon GenePix 4000B scanner (Molecular Devices, Sunnyvale, CA, USA), and photomultiplier tube gain settings were individually adjusted to balance and maximize the dynamic range for both channels.

#### *cDNA microarray data analysis*

Scanned Tagged Image File Format images were analyzed with GenePix Pro 6.0 (Molecular Devices), with the following steps: 1) find, align and fill irregular features, and 2) flag features, which match the query: (Circularity)=0 OR (Sum of Medians (635/532)) $\leq$ 400 OR (F532% Sat.) $>$ 5 OR (F635% Sat.) $>$ 5. GenePix result files were converted into the TIGR MultiExperiment Viewer file format using

the TIGR ExpressConverter (TM4, Version 2.1). Using TIGR MIDAS 2.22 (TM4) (Saeed *et al.*, 2003), data were locally weighted scatterplot smoothing (LOWESS) normalized, block and slide standard deviation regularized, and in-slide duplicates were averaged.

We filtered expression data to include only those features for which a minimum of three out of four samples per condition had fluorescence values. Resulting fluorescence data were log<sub>2</sub> transformed. Using the Bioconductor package 'limma' (Smyth, 2004) for further analysis in R (R Core Team, 2012), the log<sub>2</sub>-transformed values were compared using pair-wise comparisons and adjusted *P*-values for multiple testing using a false discovery rate  $<$ 0.05 (Benjamini and Hochberg, 1995). Visualizations of the data were performed using MeV v4.6.1 (Saeed *et al.*, 2003).

## Results

### *PhyloChips hybridizations*

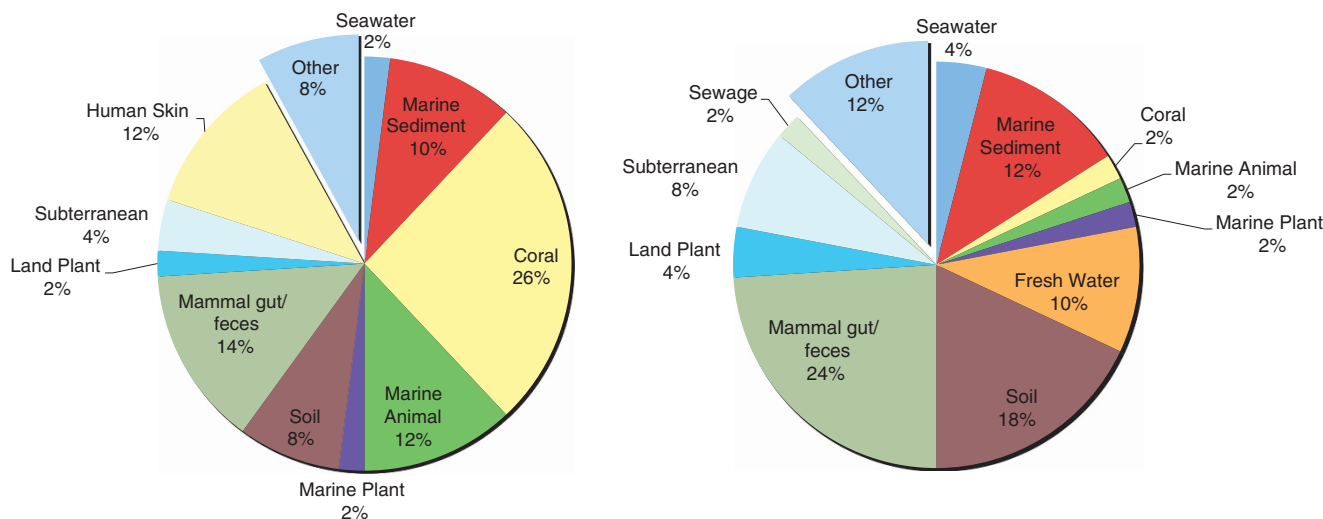
Of 59 222 OTUs complementary to PhyloChip probe sets, 4102 hybridized and passed filter parameters (Hazen *et al.*, 2010). Many were unclassified in the reference database and  $\sim$ 50% (2068) lacked family level annotation.

### *More terrestrial-originated sequences in diseased samples*

A shift was observed towards increasing sequences of terrestrial origin in the diseased samples. The 50 most abundant sequences on the PhyloChip for HH and DD were markedly different. Bacterial sequences originally isolated from marine environments made up more than half of the most abundant in the HH sample (52%); a quarter (26%) were originally isolated from corals. In DD, only 22% were from marine environments, while 66% were sequences originally isolated from terrestrial environments. Only 2% of the hybridized spots in DD represented sequences originally isolated from corals (Figure 1).

### *Higher bacterial richness in diseased samples*

Overall, 70 classified bacterial phyla were represented. Most phyla were identified in diseased samples (Table 1). DD samples had almost double the amount of phyla ( $n = 30$ ) compared with healthy ( $n = 16$ ). HD had the most phyla associated ( $n = 44$ ). To measure relative richness each sample was compared with the grand total (Table 2). Relative richness revealed changes in the community structure of the 15 richest phyla (Figure 2). HH samples had the highest relative richness of *Bacteroidetes*, *Spirochetes* and *Proteobacteria* (*Gammaproteobacteria*). In DD, *Firmicutes* showed the greatest relative richness. Relative richness in HD was similar to DD, however *Proteobacteria* was richest in HD and, of those, the majority were *Alphaproteobacteria*.



**Figure 1** The top 50 most abundant, unique sequences in HH (left) and DD (right) conditions, which contained sequences that were originally sampled from terrestrial (for example, soil, fresh water and mammal gut/feces) and marine environments (for example, marine sediment, seawater, coral, marine animals). These delineations revealed an increase in terrestrial-associated sequences with DD samples.

**Table 1** The average number of bacterial taxa identified per condition out of the maximum number matched at each taxonomic level, unclassified taxa excluded

Taxonomic level (n)	Healthy colonies		Diseased colonies	
	n identified in HH (%)	n identified in HD (%)	n identified in DD (%)	n identified in DD (%)
Phylum (70)	16 (23%)	44 (63%)	30 (43%)	30 (43%)
Class (276)	22 (8%)	118 (43%)	68 (25%)	68 (25%)
Order (179)	16 (9%)	78 (44%)	47 (26%)	47 (26%)
Family (188)	15 (8%)	70 (37%)	44 (23%)	44 (23%)

Abbreviations: DD, diseased lesion; HD, healthy-appearing tissue on diseased colonies; HH, healthy-appearing colonies.

#### Differential family abundances

Descriptive richness was measured by comparing the number of families associated with one sample to the total within each condition. For the top 15 families, composition varied between health conditions (that is, HH, HD, and DD). In total, all health conditions comprised 28 bacterial families; 11 of those top families were found in all three conditions. Eleven families were most abundantly associated with only HD and DD (Figure 3). *Sulfobacillus*\_FM was associated with both, HH and HD, but not DD. *Vibrionaceae*, *Planococcaceae* and *Aeromonadaceae* were in the top 15 families in HH. *Desulfovibrio*\_FM was most abundantly associated with HD and *Halanaerobiaceae* with DD.

Additional significant classified families resulted from the limma pair-wise comparisons (Supplementary Figure 1). Of these, *Vibrionaceae* was the most abundant family in HH samples. Based on  $\log_2$  values, *Planococcaceae*, *Enterobacteriales*, *Enterobacteriaceae*, and *Fusobacteriaceae* were also abundant families in HH. *Pirellula* and BCf2-25, both *Plantomycetes*, were the two most abundant families associated with HD samples. *Rhodoplanaceae*, *Ruminococcus*, *Azospirillaceae*

and *Phyllobacteriaceae*, were differentially abundant in the HD condition. *Peptostreptococcaceae* was the most abundant family in DD (FC = 3.01), but *Halanaerobiaceae*, *Catabacter* and *Ruminococcus* were also prevalent.

#### Differential OTU abundances

Limma pair-wise analyses identified 124 significant OTUs at  $P < 0.05$  and  $FC \geq 2$ . When HH samples were compared with HD samples, 94 significant OTUs were identified. HD vs DD comparison resulted in 44 significant OTUs. HH to DD comparisons identified 41 OTUs (Supplementary Figure 1). While some OTUs did overlap, a distinct bacterial community structure defined each of the health conditions.

The most abundant OTUs in both the HH and HD samples were originally discovered in association with marine organisms, however, the majority of these were unclassified. Across samples of all three health conditions the proportion of unclassified OTUs was similar at each taxonomic level.

#### Distinct *Symbiodinium* populations & coral genotypes

Restriction fragment length polymorphism signatures identified the majority taxa associated with each health condition; HH samples, two samples had clade A and two hosted clade C (Table 3). The HD samples were most diverse. All DD samples hosted clade A with one sample also harboring clade C. In addition, host genotyping confirmed that all coral colonies sampled were genets and not clones.

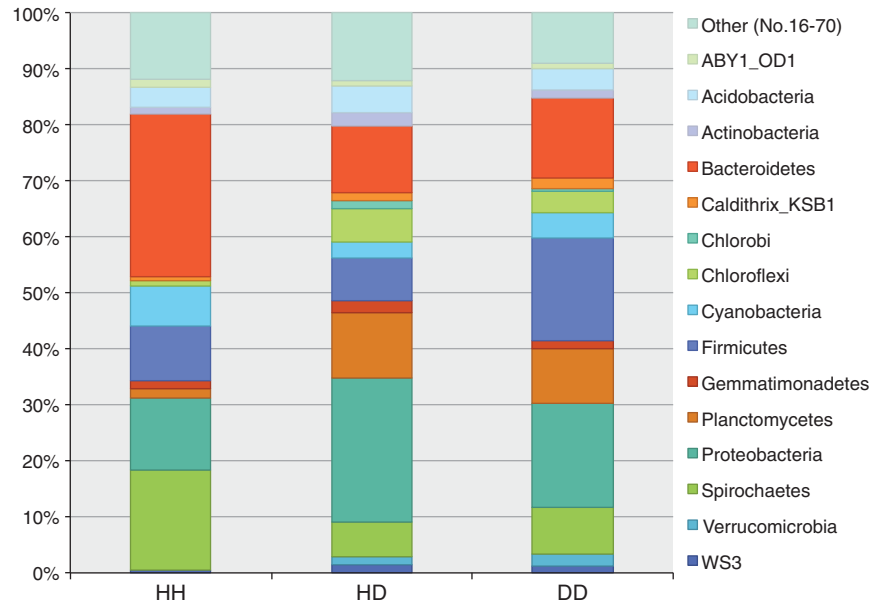
#### Distinct host-transcriptomic response

After hybridization to the coral cDNA microarray, 6,620 genes passed the filtering criteria. At  $P < 0.01$

**Table 2** Richness totals for each taxonomic level across all three health conditions; classified richness, left, vs unclassified richness, right

Taxonomic level	HH(88)		HD(684)		DD(336)	
	Classified (%)	Unclassified (%)	Classified (%)	Unclassified (%)	Classified (%)	Unclassified (%)
Phylum	65 (74%)	23 (26%)	526 (77%)	158 (23%)	252 (75%)	84 (25%)
Class	44 (50%)	44 (50%)	314 (46%)	370 (54%)	157 (47%)	179 (53%)
Order	38 (43%)	50 (57%)	254 (37%)	430 (63%)	132 (39%)	204 (61%)
Family	25 (28%)	63 (72%)	152 (22%)	532 (78%)	87 (26%)	249 (74%)

Abbreviations: DD, diseased lesion; HD, healthy-appearing tissue on diseased colonies; HH, healthy-appearing colonies.



**Figure 2** Mean community structure of the 15 richest phyla across all health conditions. *Chlorobi* and *Verrucomicrobia* were identified exclusively in the diseased samples. *Bacteroidetes*, *Cyanobacteria* and *Spirochetes* were richest in HH, dominantly *Alphaproteobacteria*. *Firmicutes* were richest in DD.

( $n = 431$ ), more than 80% of the genes exhibited increasing or decreasing expression trends, where HH and DD had opposite expression patterns, while HD consistently exhibited intermediate gene expression (Figure 4). The host cDNA array analysis (false discovery rate = 5) resulted in 134 significantly expressed genes across all three pair-wise comparisons.

HH vs DD comparison resulted in 132 significantly differentially expressed genes (DEGs) with 83 upregulated and 49 downregulated genes in the DD samples (Supplementary Table 1). The five genes with the highest log FC ranged from 2.82 to 3.74, but have unknown functions. Of the 132 DEGs, 63 were annotated (Figure 5 for the condensed list and FC values). The annotated DEGs with the largest FC were Equinatoxin-5 (NCBI dbEST ID: CCHW6675) and small cysteine-rich protein 1 (CCHW7708), which were downregulated in DD ( $-2.70$  and  $-2.64$ , respectively). Hemicentin-1 (CCHW6762) was the most upregulated annotated gene in the diseased samples (FC = 2.57). Of the 132 significant genes,

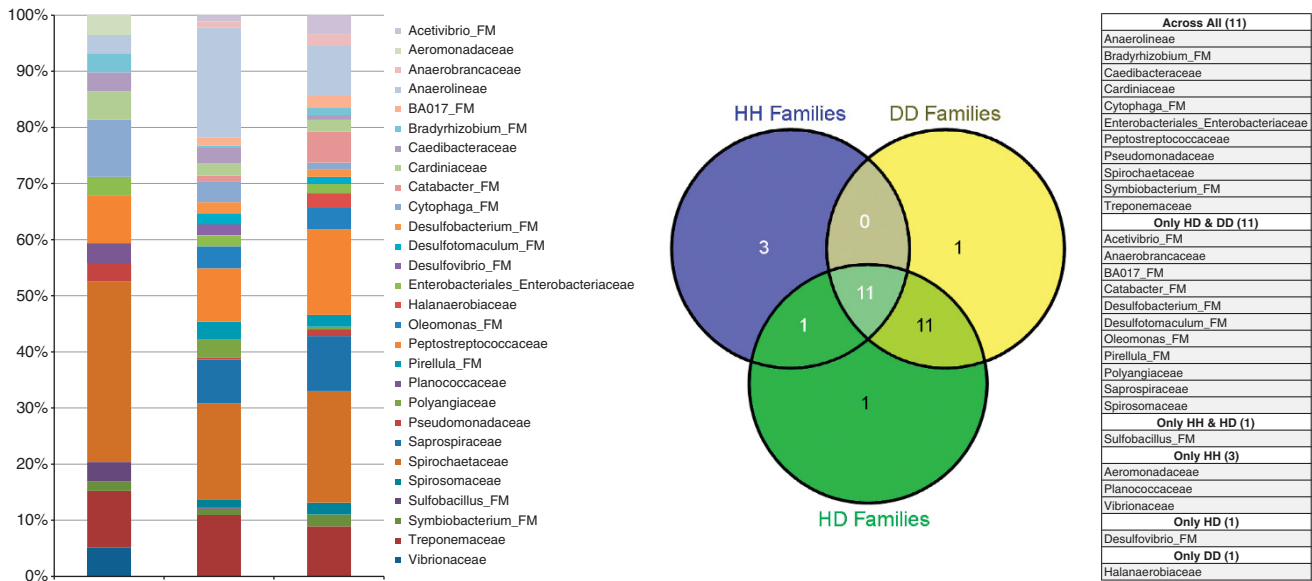
117 were solely significant in the HH vs DD comparison and not significant in the other comparisons.

The HH vs HD comparison revealed 16 significant DEGs. One (CCHW60626) was downregulated and 15 were upregulated in the HD samples. Only two of the upregulated genes were annotated, cyclic AMP-responsive element-binding protein 1 (CCHW1799) and proteasome subunit alpha type-3 (CCHW9385). Two of the genes (CCHW12270 and CCHW6026) were found to be significant only in the HH vs HD comparison.

Only one unannotated gene (AOSF808) was differentially expressed between HD vs DD. The DD condition was downregulated (FC =  $-1.81$ ) relative to HD.

## Discussion

Multiple stressors compromise coral health and leave them susceptible to disease. Although YBD was described in the Caribbean in the mid-90's, the



**Figure 3** Descriptive family richness stacked bar chart for the top 15 families in each condition. There was a large overlap between the top families associated with HD and DD. *Spirochaetaceae* was dominant in HH samples. The Venn diagram and table show families such as *Aeromonadaceae*, *Planococcaceae*, and *Vibrionaceae* that were top families only in HH. Eleven families were associated with only HD & DD samples. *Desulfovibrio\_FM* was highly abundant only in HD samples, while *Halanaerobiaceae* was richest in DD samples.

**Table 3** Associated *Symbiodinium* clades per sample furcate according to health condition

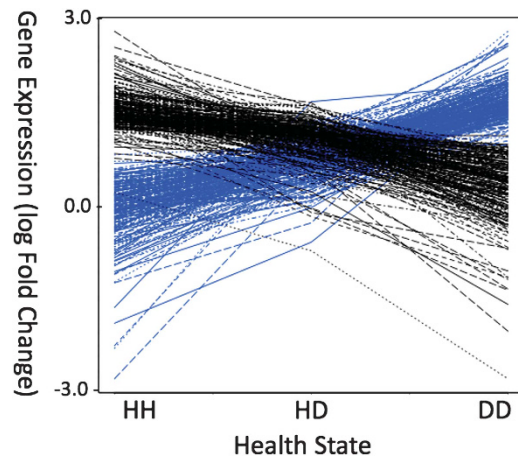
Sample	Clade 1	Clade 2	Clade 3
HH1	C		
HH2	A		
HH3	A		
HH4	C		
HD1	C		
HD2	C		
HD3	C	D	A
HD4	C	D	B
DD1	A	C	
DD2	A		
DD3	A		
DD4	A		

Abbreviations: DD, diseased lesion; HD, healthy-appearing tissue on diseased colonies; HH, healthy-appearing colonies. Clade C and A were each dominant in two samples of HH. Clade C was dominant in HD. Clade A was dominant in the DD samples

method of transmission remains elusive. How diseases affect the holobiont and its dynamic microbial assemblage, which may have a role in disease progression, is also still poorly known. Baseline descriptive data corresponding to different health states, exemplified in this study, are the key to understanding the etiology of a disease.

*Bacterial community shifts under different health states*

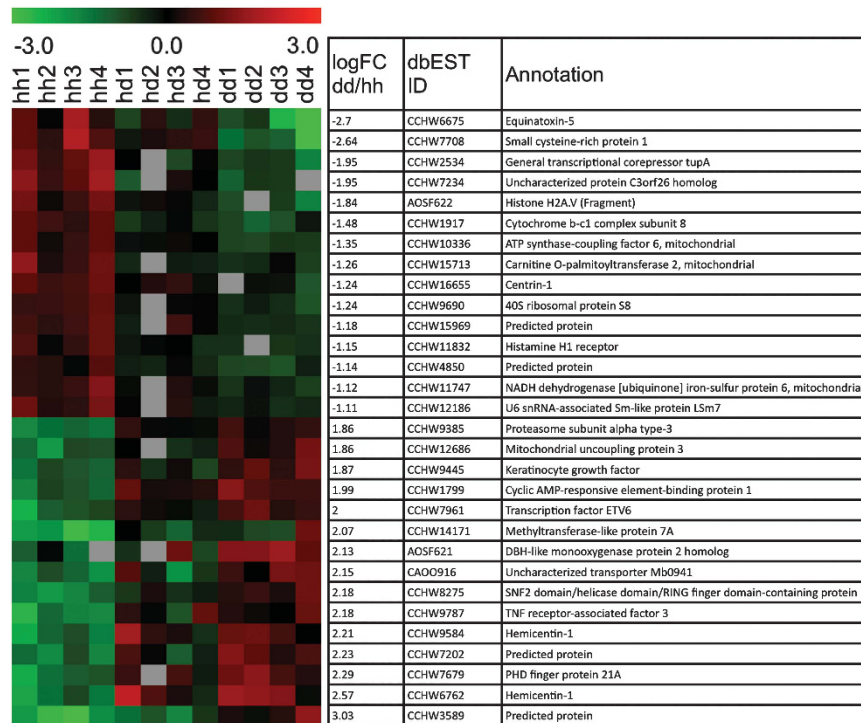
Coring provided reproducible results when assessing the coral-associated bacterial community structure as also observed by Kellogg *et al.* (2012). The community structure changed dramatically when comparing healthy (HH) to diseased (HD and DD) colonies.



**Figure 4** DEGs show distinct expression differences across health conditions, with healthy-diseased often having an intermediate expression signal. Greater than 80% ( $n = 438$ ) of the 500 significant genes ( $P < 0.01$ ) show a trend of either continuous up (blue,  $n = 221$ ) or down (black,  $n = 217$ ) regulation of transcripts when comparing expression values across all three health conditions.

Differences were also observed between HD and DD. Our data are consistent with other studies that showed increased bacterial richness in impacted corals over healthy (Table 2) (Sunagawa *et al.*, 2009b; Vega Thurber *et al.*, 2009; Roder *et al.*, 2014).

The highest bacterial richness was observed in the healthy-appearing tissue on the diseased colonies (HD). High bacterial diversity in these tissues likely reflects disequilibrium in the community structure and may represent a transitional community or competition after a disturbance (Costello *et al.*, 2012). Opportunistic taxa may compete for available resources and take advantage of the impaired



**Figure 5** Heatmap of the 15 most upregulated as well as downregulated DEGs across the three conditions determined by limma (false discovery rate = 5). Negative log FC represents downregulated genes in DD, positive represent upregulated in DD (left column) resulting from DD vs HH comparison. NCBI dbEST ID and Annotations characterize the DEGs (right columns).

defense system. This ultimately may increase some members or new colonists, while decreasing other members and give rise to the increased taxa associated with disease (Sunagawa *et al.*, 2009b; Vega Thurber *et al.*, 2009; Roder *et al.*, 2014). Richness may be further inflated because of factors such as proximity to the lesion, symbiont composition and micro-environmental differences.

The most abundant OTUs in this dataset were associated with sequences previously identified from coral, mammal guts and sediments. OTUs frequently found in diseased colonies were often related to bacteria that have been associated with fecal or gut communities. This evidence supported the idea that a healthy microbial community may be destabilized by high nutrients (Bruno *et al.*, 2003; Kimes *et al.*, 2010) and terrestrial run-off. Fluctuations in community structure could exacerbate YBD.

*Vibrionaceae* have been described as potential causative agents for YBD (Cervino *et al.*, 2004). Cróquer *et al.* (2013) found *Vibrio* spp. to be dominant in diseased mucus. However, in this dataset and other YBD studies (Cunning *et al.*, 2009), *Vibrionaceae* were noticeably more abundant (2–10x) in healthy samples (Supplementary Figure 1). Some *Vibrios* are commensal in healthy corals (Chimetto *et al.*, 2008; Koenig *et al.*, 2011; Krediet *et al.*, 2013). This does not negate that it may be possible for *Vibrios* to become pathogenic as environmental conditions change or genomic modifications occur, such as activation, shuffling or transfer of gene cassettes (Koenig *et al.*, 2011).

*Firmicutes*, such as *Peptostreptococcaceae*, *Clostridiaceae*, *Thermoanaerobacteriaceae*, *Ruminococcus*\_FM, *Halanaerobiaceae*, and *Clostridium*\_FM, were more abundant in diseased samples. Many of these are anaerobic families or facultative anaerobes, suggesting that under diseased conditions oxygen-limitation may favor anaerobic bacteria. *Peptostreptococcaceae* was the most abundant family in DD samples and has been observed in other coral diseases, both Black Band (Sekar *et al.*, 2009) and White Plague (Sunagawa *et al.*, 2009b). Sunagawa *et al.* (2009b) also observed abundant *Clostridiaceae* in White Plague samples. *Firmicute*\_Clostridia along with *Actinobacteria*, both Gram-positive bacterial groups, dominated DD samples. Gram-negative bacteria were less represented in DD samples. The above families all contain known pathogens and many have been linked to sewage-related samples.

HH samples were strongly associated with *Proteobacteria*\_Gammaproteobacteria and *Bacteroidetes*, both gram-negative bacterial groups. *Fusobacteria* (Gram (-)), *Acidobacteria* (Gram (-)), *Planctomycetes* (Gram (-)) and *Actinobacteria* (Gram (+)) were each represented once.

*Pseudoalteromonas*, which has been previously associated with YBD (Cervino *et al.*, 2004) was not measured in high abundance. However, other *Pseudomonadaceae* were present at low abundance, in all health states. Abundances were even lower in diseased samples compared with HH and HD. *Crenotrichaceae*, which associates with sponges and has been sampled from seawater, was most



abundant in the HD samples. These data supported the hypothesis that the bacterial community is shifting in regions adjacent to the lesion. Microbial taxa from the surrounding water column may colonize during these shifts, which suggests that the disease-associated community may change with season or geographic location.

#### *Symbiodinium* clade differences in various health states

*O. faveolata* associates with *Symbiodinium* from clades A, B, C and D (Garren *et al.*, 2006; DeSalvo *et al.*, 2010; Thornhill *et al.*, 2010, 2013). Both A and C were present in HH. Clade C dominated the HD condition. Half of the HD samples also contained D with traces of either clade A or clade B. Finally, DD samples contained mostly clade A; however, one sample also hosted clade C. Cervino *et al.* (2004) showed that intercellular *Symbiodinium* lysed before YBD-affected coral tissues displayed physical symptoms of the disease. The dominant clade A signature in these DD samples could be remnants of lysed cells. Alternatively, certain clade A genotypes have been present during or colonized coral polyps after stress events (Rodríguez-Román *et al.*, 2006; Stat *et al.*, 2008; DeSalvo *et al.*, 2010).

Microbial interactions may be shaping *Symbiodinium* species composition or alternatively, *Symbiodinium* may affect the bacterial communities (Bourne *et al.*, 2013). We recorded diverse *Symbiodinium* assemblages in the samples from the diseased colonies, which may represent shifting communities. Our sample size and genotyping were too limited to provide conclusive evidence to support this hypothesis. However, our observations suggest that it would be worthwhile to further investigate how disease and microbial interactions impact coral–*Symbiodinium* assemblages.

#### Transcriptomic responses under disease & stress

Host genets under healthy and diseased conditions showed distinct transcriptomes. Differences in gene expression reflect the differences between health states. However, in the HD condition, some DEGs responded similarly to DD and some were more similar to the HH response. These results illustrated that the HD condition is not always defined by intermediate expression.

The clearly distinct DEG profiles for HH and DD showed that corals exhibit an extreme cellular response under YDB. For instance, respiration is reduced as mitochondrial ATP synthase-coupling factor 6 and other mitochondrial-associated genes appear to be suppressed once the disease manifests into a lesion (Supplementary Table 1). In addition, specific functional genes are differentially expressed between health conditions. Equinatoxin-5 (CCHW6675), a protein involved with pore-formation found in nematocysts of cnidarians (Anderluh

*et al.*, 1999), is downregulated in DD. This protein has also been proposed as a precursor to the antimicrobial peptides of the magainin and derma-septin families (Pungercar *et al.*, 1997). The suppression of Equinatoxin-5 would leave the coral-host with reduced defense mechanisms. CCHW7708, small cysteine-rich protein 1 (SCRiP1), is also strongly suppressed in DD samples. SCRiP1 is part of the SCRiP gene family, originally uncovered in *O. faveolata*, and is the only SCRiP to have a  $\beta$ -defensin domain (Sunagawa *et al.*, 2009a). The reduction of these two distinct antimicrobial peptides could impede the innate immune response that healthy corals would launch at the site of infection. In addition to suppressed defense mechanisms, Transcriptional corepressor tupA (CCHW2534) and Histone H2A.v (AOSF622), which are involved in transcriptional repression and regulation, are strongly downregulated in DD.

Hemicentin-1 is highly upregulated in diseased samples. Hemicentin-1 is part of the immunoglobulin superfamily in human (Vogel and Hedgecock, 2001) and involved in immune response as well as stabilization of the germline syncytium in *C. elegans* (Vogel *et al.*, 2006). Additional immune response proteins, such as tumour-necrosis factor receptor-associated factor 3 (CCHW9787), are strongly upregulated in diseased samples. This protein has been associated with hemorrhage and inflammatory response. Specifically, cyclic AMP-responsive element-binding protein 1 has been associated with hypoxia-induced inflammatory processes (Comerford *et al.*, 2003) and is upregulated in DD. PHD finger protein 21A (CCHW7679) inhibits transcription from RNA polymerase II promoter and the transcription factor ETV6 (CCHW7961) is a transcriptional repressor. Both were strongly upregulated in DD.

Strong mitochondrial suppression suggests that nutrients, which may have been provided by beneficial microbes are no longer available. Nor did the host invest in energy production. Although immune and inflammatory responses (also observed in coral bleaching studies) were identified, we did not detect differential expression of reactive oxygen species or heat shock proteins genes that appear in temperature stress studies (Barshis *et al.*, 2013; DeSalvo *et al.*, 2008, 2010, 2012).

#### HD as an intermediate health state

These results showed that HD is an intermediate health state, which is distinct and potentially transitional. While HD appeared visually healthy, bacterial richness was threefold higher than in HH. This may be explained by the Intermediate Disturbance Hypothesis (Connell, 1978), where maximum species diversity is postulated to exist at intermediate regimes of disturbance. Although originally proposed for plant and animal diversity, our results suggest this may occur in microbial systems

as well. Transcriptional changes indicate that the coral responds to disease, even in areas where the diseased colony does not exhibit signs of disease. A systemic response in colonies with YBD was also observed by Mydlarz *et al.* (2009); higher lysozyme-like and antibacterial enzymatic activity was measured in both healthy-appearing and diseased tissue. We measured a systemic response in diseased colonies by the change in DEGs. Some FC values were higher in HD than in DD, suggesting that certain unannotated genes have a larger role in the host transcriptome during this intermediate health state. Variance was higher for the HD sample set likely owing to sampling a less defined area. Together, a distinct DEG profile, *Symbiodinium* population and bacterial community structure defined HD as an intermediate health state in the progression of YBD.

## Conclusions

Coral colonies are complex microbial ecosystems that can now be examined experimentally through the lens of high throughput tools as those described herein.

This study assessed the health state of coral colonies using two microarray technologies. Differences were distinguished in both the host transcriptome response and associated microbial communities. We used three conditions to examine a spectrum of health states and determine factors in the YBD progression. The HD condition was a distinct health state, where the associated bacterial community was mostly composed of the diversity associated with HH as well as DD, and host gene expression levels were also intermediate. This intermediate profile revealed that the entire colony responds to the disease, even though the HD tissue is visually indistinguishable from healthy tissue.

The molecular signatures highlighted in this study provide a basis for future studies of YBD and other coral diseases to assess disease beyond phenotypic appearance. Future studies should use consistent collecting methods. In particular, samples from the HD condition have proven to be valuable. With comparative methods and further attention to intermediate health states, we will learn more about coral health, disease dynamics and subsequent changes in the coral holobiont.

## Conflict of Interest

The authors declare no conflict of interest.

## Acknowledgements

We would like to thank the Instituto de Ciencias del Mar y Limnología (ICML), the Universidad Nacional Autónoma de México for providing facilities and collection permits. Additionally we would like to thank those at the ICML, as well as the Medina & Andersen Lab members who

provided assistance in collecting the sample, and in experimental and analytical methods. Especially, Adán Guillermo Jordán-Garza, Julia Schnetzer and Erika M Diaz-Almeyda for helping with the sample collection. Nicholas R Polato & Elizabeth Green for genotyping coral colonies. Lauren M Tom for assistance with the analyses. Justin L Matthews for statistical input. Bishop SK Kamel and Erika M Diaz-Almeyda for additional draft comments. This study was supported by NSF awards IOS 0644438 and IOS 0926906 from NSF to MM.

## References

- Ainsworth TD, Vega Thurber R, Gates R. (2009). The future of coral reefs: a microbial perspective. *Trends Ecol Evol* **25**: 233–240.
- Alagely A, Krediet CJ, Ritchie KB, Teplitski M. (2011). Signaling-mediated cross-talk modulates swarming and biofilm formation in a coral pathogen *Serratia marcescens*. *ISME J* **5**: 1609–1620.
- Anderluh G, Krizaj I, Strukelj B, Gubensek F, Macek P, Pungercar J. (1999). Equinatoxins, pore-forming proteins from the sea anemone *Actinia equina*, belong to a multigene family. *Toxicon* **37**: 1391–1401.
- Aranda M, Banaszak AT, Bayer T, Luyten JR, Medina M, Voolstra CR. (2011). Differential sensitivity of coral larvae to natural levels of ultraviolet radiation during the onset of larval competence. *Mol Ecol* **20**: 2955–2972.
- Barshis DJ, Ladner JT, Oliver TA, Seneca FO, Traylor-Knowles N, Palumbi SR. (2013). From the cover: genomic basis for coral resilience to climate change. *Proc Natl Acad Sci USA* **110**: 1387–1392.
- Bellantuono AJ, Granados-Cifuentes C, Miller DJ, Hoegh-Guldberg O, Rodriguez-Lanetty M. (2012). Coral thermal tolerance: tuning gene expression to resist thermal stress. *PLoS One* **7**: e50685.
- Benjamini Y, Hochberg Y. (1995). Controlling the false discovery rate: a practical and powerful approach to multiple testing. *J R Stat Soc Ser B* **57**: 289–300.
- Bourne DG, Dennis PG, Uthicke S, Soo RM, Tyson GW, Webster N. (2013). Coral reef invertebrate microbiomes correlate with the presence of photosymbionts. *ISME J* **7**: 1452–1458.
- Bourne DG, Garren M, Work T, Rosenberg E, Smith G, Harvell CD. (2009). Microbial disease and the coral holobiont. *Trends Microbiol* **17**: 554–562.
- Brandt ME, McManus J. (2009). Disease incidence is related to bleaching extent in reef-building corals. *Ecology* **90**: 2859–2861.
- Brodie EL, DeSantis TZ, Joyner D, Joyner DC, Baek SM, Larsen JT *et al.* (2006). Application of a high-density oligonucleotide microarray approach to study bacterial population dynamics during uranium reduction and reoxidation. *Appl Environ Microbiol* **72**: 6288–6298.
- Bruckner AW, Bruckner RJ. (2006). Consequences of yellow band disease (YBD) on *Montastraea annularis* (species complex) populations on remote reefs off Mona Island, Puerto Rico. *Dis Aquat Org* **69**: 67–73.
- Bruno JF, Petes LE, Harvell CD, Hettinger A. (2003). Nutrient enrichment can increase the severity of coral diseases. *Ecol Lett* **6**: 1056–1061.

- Bruno JF, Selig ER, Casey KS, Page CA, Willis BL, Harvell CD *et al.* (2007). Thermal stress and coral cover as drivers of coral disease outbreaks. *PLoS Biol* **5**: e124.
- Budd AF, Fukami H, Smith ND, Knowlton N. (2012). Taxonomic classification of the reef coral family *Mussidae* (Cnidaria: Anthozoa: Scleractinia). *Zoolog J Linn Soc* **166**: 465–529.
- Cervino JM, Goreau T, Nagelkerken I, Smith G, Hayes R. (2001). Yellow band and dark spot syndromes in Caribbean corals: distribution, rate of spread, cytology, and effects on abundance and division rate of zooxanthellae. *Hydrobiologia* **460**: 53–63.
- Cervino JM, Hayes R, Polson S. (2004). Relationship of *Vibrio* species infection and elevated temperatures to yellow blotch/band disease in Caribbean corals. *Appl Environ Microbiol* **70**: 6855–6864.
- Cervino JM, Thompson F, Gomez-Gil B, Lorence E, Goreau T, Hayes R *et al.* (2008). The *Vibrio* core group induces yellow band disease in Caribbean and Indo-Pacific reef-building corals. *J Appl Micro* **105**: 1658–1671.
- Chimetto LA, Brocchi M, Thompson CC, Martins RCR, Ramos HR, Thompson FL. (2008). *Vibrios* dominate as culturable nitrogen-fixing bacteria of the Brazilian coral *Mussismilia hispida*. *Syst Appl Microbiol* **31**: 312–319.
- Comerford KM, Leonard MO, Karhausen J, Carey R, Colgan SP, Taylor CT. (2003). Small ubiquitin-related modifier-1 modification mediates resolution of CREB-dependent responses to hypoxia. *Proc Natl Acad Sci USA* **100**: 986–991.
- Connell JH. (1978). Diversity in tropical rain forests and coral reefs. *Science* **199**: 1302–1310.
- Costello EK, Stagaman K, Dethlefsen L, Bohannan BJM, Relman DA. (2012). The application of ecological theory toward an understanding of the human microbiome. *Science* **336**: 1255–1262.
- Cróquer A, Bastidas C, Elliott A, Sweet M. (2013). Bacterial assemblages shifts from healthy to yellow band disease states in the dominant reef coral *Montastraea faveolata*. *Environ Microbiol Rep* **5**: 90–96.
- Cunning J, Thurmond J, Smith G, Weil E, Ritchie KB. (2009). A survey of *Vibrios* associated with healthy and Yellow Band Diseased *Montastraea faveolata*. *Proc 11th Intl Coral Reef Symp* **7**: 206–210.
- Davies SW, Rahman M, Meyer E, Green EA, Buschiazzo E, Medina M *et al.* (2013). Novel polymorphic microsatellite markers for population genetics of the endangered Caribbean star coral, *Montastraea faveolata*. *Mar Biodiv* **43**: 167–172.
- DeSalvo MK, Estrada A, Sunagawa S, Medina M. (2012). Transcriptomic responses to darkness stress point to common coral bleaching mechanisms. *Coral Reefs* **31**: 215–228.
- DeSalvo MK, Sunagawa S, Fisher PL, Voolstra CR, Iglesias-Prieto R, Medina M. (2010). Coral host transcriptomic states are correlated with. *Mol Ecol* **19**: 1174–1186.
- DeSalvo MK, Voolstra CR, Sunagawa S, Schwarz JA, Stillman J, Coffroth M *et al.* (2008). Differential gene expression during thermal stress and bleaching in the Caribbean coral *Montastraea faveolata*. *Mol Ecol* **17**: 3952.
- Douglas AE. (1998). Nutritional interactions in insect-microbial symbioses: aphids and their symbiotic bacteria *buchnera*. *Annu Rev Entomol* **43**: 17–37.
- Dustan P. (1977). Vitality of reef coral populations off Key Largo, Florida: recruitment and mortality. *Environ Geol* **2**: 51–58.
- Gardner T, Côté I, Gill J, Grant A, Watkinson A. (2003). Long-term region-wide declines in Caribbean corals. *Science* **301**: 958.
- Garren M, Walsh SM, Caccone A, Knowlton N. (2006). Patterns of association between *Symbiodinium* and members of the *Montastraea annularis* species complex on spatial scales ranging from within colonies to between geographic regions. *Coral Reefs* **25**: 503–512.
- Hazen TC, Dubinsky EA, DeSantis TZ, Andersen GL, Piceno YM, Singh N *et al.* (2010). Deep-sea oil plume enriches indigenous oil-degrading bacteria. *Science* **330**: 204–208.
- Hughes TP, Graham NAJ, Jackson JBC, Mumby PJ, Steneck RS. (2010). Rising to the challenge of sustaining coral reef resilience. *Trends Ecol Evol* **25**: 633–642.
- Kaniewska P, Campbell PR, Kline DI, Rodriguez-Lanetty M, Miller DJ, Dove S *et al.* (2012). Major cellular and physiological impacts of ocean acidification on a reef building coral. *PLoS One* **7**: e34659.
- Kellogg CA, Piceno YM, Tom LM, DeSantis TZ, Zawada DG, Andersen GL. (2012). PhyloChip microarray comparison of sampling methods used for coral microbial ecology. *J Microbiol Methods* **88**: 103–109.
- Kimes NE, Van Nostrand JD, Weil E, Zhou J, Morris PJ. (2010). Microbial functional structure of *Montastraea faveolata*, an important Caribbean reef-building coral, differs between healthy and yellow-band diseased colonies. *Environ Microbiol* **12**: 541–556.
- Knowlton N, Jackson JBC. (2008). Shifting baselines, local impacts, and global change on coral reefs. *PLoS Biol* **6**: e54.
- Koenig JE, Bourne DG, Curtis B, Dlutek M, Stokes HW, Doolittle WF *et al.* (2011). Coral-mucus-associated *Vibrio* integrons in the Great Barrier Reef: genomic hotspots for environmental adaptation. *ISME J* **5**: 962–972.
- Krediet CJ, Ritchie KB, Paul VJ, Teplitski M. (2013). Coral-associated micro-organisms and their roles in promoting coral health and thwarting diseases. *Proc Biol Sci* **280**: 20122328.
- Lema KA, Willis BL, Bourne DG. (2012). Corals form characteristic associations with symbiotic nitrogen-fixing bacteria. *Appl Environ Microbiol* **78**: 3136–3144.
- Lesser MP, Mazel C, Gorbunov M, Falkowski P. (2004). Discovery of symbiotic nitrogen-fixing cyanobacteria in corals. *Science* **305**: 997.
- Mendes R, Kruijt M, De Bruijn I, Dekkers E, Van Der Voort M, Schneider JHM *et al.* (2011). Deciphering the rhizosphere microbiome for disease-suppressive bacteria. *Science* **332**: 1097–1100.
- Mouchka ME, Hewson I, Harvell CD. (2010). Coral-associated bacterial assemblages: current knowledge and the potential for climate-driven impacts. *Integr Comp Biol* **50**: 662–674.
- Muscatine L, Porter JW. (1977). Reef corals: mutualistic symbioses adapted to nutrient-poor environments. *BioScience* **27**: 454–460.
- Mydlarz LD, Couch CS, Weil E, Smith G, Harvell CD. (2009). Immune defenses of healthy, bleached and diseased *Montastraea faveolata* during a natural bleaching event. *Dis Aquat Organ* **87**: 67–78.
- Pandolfi JM, Bradbury RH, Sala E, Hughes TP, Bjorndal KA, Cooke RG *et al.* (2003). Global trajectories of the

- long-term decline of coral reef ecosystems. *Science* **301**: 955–958.
- Pollock FJ, Morris PJ, Willis BL, Bourne DG. (2011). The urgent need for robust coral disease diagnostics. *PLoS Pathog* **7**: e1002183.
- Portune KJ, Voolstra CR, Medina M, Szmant AM. (2010). Development and heat stress-induced transcriptomic changes during embryogenesis of the scleractinian coral *Acropora palmata*. *Mar Genomics* **3**: 51–62.
- Pungercar J, Anderluh G, Macek P, Gubensek F, Strukelj B. (1997). Sequence analysis of the cDNA encoding the precursor of equinatoxin V, a newly discovered hemolysin from the sea anemone *Actinia equina*. *Biochim Biophys Acta* **1341**: 105–107.
- R Core Team *R: a Language And Environment For Statistical Computing*. R Foundation for Statistical Computing; Vienna (2012).
- Reeves L. (1994). Newly discovered: yellow band disease strikes keys reefs. *Underwater USA* **11**: 16.
- Richards Dona A, Cervino JM, Karachun V, Lorence E, Bartels E, Hughen K *et al*. (2008). Coral yellow band disease; current status in the caribbean, and links to new indo-pacific outbreaks. *Proc 11th Intl Coral Reef Symp* 1–5.
- Richardson LL. (1998). Coral diseases: what is really known? *Trends Ecol Evol* **13**: 438–443.
- Ritchie KB. (2006). Regulation of microbial populations by coral surface mucus and mucus-associated bacteria. *Mar Ecol Prog Ser* **322**: 1–14.
- Roder C, Arif C, Bayer T, Aranda M, Daniels C, Shibl A *et al*. (2014). Bacterial profiling of White Plague Disease in a comparative coral species framework. *ISME J* **8**: 31–39.
- Rodríguez-Román A, Hernández-Pech X, Thomé P, Enríquez S, Iglesias-Prieto R. (2006). Photosynthesis and light utilization in the Caribbean coral *Montastraea faveolata* recovering from a bleaching event. *Limnology and Oceanography* **51**: 5702–2710.
- Rohwer F, Breitbart M, Jara J, Azam F, Knowlton N. (2001). Diversity of bacteria associated with the Caribbean coral *Montastraea franksi*. *Coral reefs* **20**: 85–91.
- Rohwer F, Seguritan V, Azam F, Knowlton N. (2002). Diversity and distribution of coral-associated bacteria. *Mar Ecol Prog Ser* **243**: 1–10.
- Rowan R, Knowlton N. (1995). Intraspecific diversity and ecological zonation in coral-algal symbiosis. *Proc Natl Acad Sci USA* **92**: 2850–2853.
- Rowan R, Powers DA. (1991). Molecular genetic identification of symbiotic dinoflagellates(zooxanthellae). *Mar Ecol Prog Ser* **71**: 65–73.
- Saeed A, Sharov V, White J, Li J, Liang W, Bhagabati N *et al*. (2003). TM4: a free, open-source system for microarray data management and analysis. *Biotechniques* **34**: 374–378.
- Sekar R, Kaczmarzsky LT, Richardson LL. (2009). Effect of freezing on PCR amplification of 16S rRNA genes from microbes associated with black band disease of corals. *Appl Environ Microbiol* **75**: 2581–2584.
- Smyth GK. (2004). Linear models and empirical Bayes methods for assessing differential expression in microarray experiments. *Stat Appl Genet Mol Biol* **3**: 1–25.
- Stat M, Morris E, Gates RD. (2008). Functional diversity in coral–dinoflagellate symbiosis. *Proc Natl Acad Sci USA* **105**: 9256–9261.
- Sunagawa S, DeSalvo MK, Voolstra CR, Reyes-Bermudez A, Medina M. (2009a). Identification and gene expression analysis of a taxonomically restricted cysteine-rich protein family in reef-building corals. *PLoS One* **4**: e4865.
- Sunagawa S, DeSantis TZ, Piceno YM, Brodie EL, DeSalvo MK, Voolstra CR *et al*. (2009b). Bacterial diversity and White Plague Disease-associated community changes in the Caribbean coral *Montastraea faveolata*. *ISME J* **3**: 512–521.
- Sunagawa S, Woodley C, Medina M. (2010). Threatened corals provide underexplored microbial habitats. *PLoS One* **5**: e9554.
- Sutherland K, Porter JW, Torres C. (2004). Disease and immunity in Caribbean and Indo-Pacific zooxanthellate corals. *Mar Ecol Prog Ser* **266**: 273–302.
- Thornhill DJ, Doubleday K, Kemp DW, Santos SR. (2010). Host hybridization alters specificity of cnidarian–dinoflagellate associations. *Mar Ecol Prog Ser* **420**: 113–123.
- Thornhill DJ, Lewis AM, Wham DC, Lajeunesse TC. (2013). Host-specialist lineages dominate the adaptive radiation of reef coral endosymbionts. *Evolution* **68**: 352–367.
- Trench RK. (1979). The cell biology of plant-animal symbiosis. *Annu Rev Plant Physiol* **30**: 485–531.
- Vega Thurber R, Willner-Hall D, Rodriguez-Mueller B, Desnues C, Edwards RA, Angly F *et al*. (2009). Metagenomic analysis of stressed coral holobionts. *Environ Microbiol* **11**: 2148–2163.
- Vogel BE, Hedgecock EM. (2001). Hemicentin, a conserved extracellular member of the immunoglobulin superfamily, organizes epithelial and other cell attachments into oriented line- shaped junctions. *Development* **128**: 883–894.
- Vogel BE, Muriel JM, Dong C, Xu X. (2006). Hemicentins: what have we learned from worms? *Cell Res* **16**: 872–878.
- Voolstra CR, Schnetzer J, Peshkin L, Randall CJ, Szmant AM, Medina M. (2009a). Effects of temperature on gene expression in embryos of the coral *Montastraea faveolata*. *BMC Genomics* **10**: 627.
- Voolstra CR, Schwarz JA, Schnetzer J, Sunagawa S, DeSalvo MK, Szmant AM *et al*. (2009b). The host transcriptome remains unaltered during the establishment of coral-algal symbioses. *Mol Ecol* **18**: 1823–1833.
- Wegley L, Edwards R, Rodriguez-Brito B, Liu H, Rohwer F. (2007). Metagenomic analysis of the microbial community associated with the coral *Porites astreoides*. *Environ Microbiol* **9**: 2707–2719.
- Weil E, Smith GW, Gil-Agudelo DL. (2006). Status and progress in coral reef disease research. *Dis Aquat Organ* **69**: 1–7.
- Wilkinson C. (2008). *Status of Coral Reefs of the World: 2008*. Global Coral Reef Monitoring Network and Reef and Rainforest Research Centre: Townsville, Australia, pp 1–304.
- Wu C, Sercu B, Van De Werfhorst L, Wong J, DeSantis TZ, Brodie EL *et al*. (2010). Characterization of coastal urban watershed bacterial communities leads to alternative community-based indicators. *PLoS One* **5**: 1–11.

Supplementary Information accompanies this paper on The ISME Journal website (<http://www.nature.com/ismej>)