

## ORIGINAL ARTICLE

# Contrasting patterns of niche partitioning between two anaerobic terminal oxidizers of organic matter

Brian B Oakley<sup>1</sup>, Franck Carbonero<sup>1</sup>, Scot E Dowd<sup>2</sup>, Robert J Hawkins<sup>3</sup> and Kevin J Purdy<sup>1</sup>

<sup>1</sup>University of Warwick, School of Life Sciences, Coventry, UK; <sup>2</sup>Research and Testing Laboratories, Lubbock, TX, USA and <sup>3</sup>University of Reading, Department of Biological Sciences, Reading, UK

Understanding the ecological principles underlying the structure and function of microbial communities remains an important goal for microbial ecology. We examined two biogeochemically important taxa, the sulfate-reducing bacterial genus, *Desulfobulbus*, and the methanogenic archaeal genus, *Methanosaeta*, to compare and contrast niche partitioning by these two taxa that are ecologically linked as anaerobic terminal oxidizers of organic material. An observational approach utilizing functional gene pyrosequencing was combined with a community-based reciprocal incubation experiment and characterization of a novel *Desulfobulbus* isolate. To analyze the pyrosequencing data, we constructed a data analysis pipeline, which we validated with several control data sets. For both taxa, particular genotypes were clearly associated with certain portions of an estuarine gradient, consistent with habitat or niche partitioning. *Methanosaeta* genotypes were generally divided between those found almost exclusively in the marine habitat (~30% of operational taxonomic units (OTUs)), and those which were ubiquitously distributed across all or most of the estuary (~70% of OTUs). In contrast to this relatively monotonic distribution, for *Desulfobulbus*, there were many more genotypes, and their distributions represented a wide range of inferred niche widths from specialist genotypes found only at a single site, to ubiquitous or generalist genotypes found in all 10 sites examined along the full estuarine gradient. Incubation experiments clearly showed that, for both taxa, communities from opposite ends of the estuary did not come to resemble one another, regardless of the chemical environment. Growth of a *Desulfobulbus* isolated into pure culture indicated that the potential niche of this organism is significantly larger than the realized niche. We concluded that niche partitioning can be an important force structuring microbial populations, with biotic and abiotic components having very different effects depending on the physiology and ecology of each taxon.

The ISME Journal (2012) 6, 905–914; doi:10.1038/ismej.2011.165; published online 24 November 2011

**Subject Category:** microbial population and community ecology

**Keywords:** methanogenesis; niche partitioning; pyrosequencing; sulfate reduction

## Introduction

Sulfate-reducing bacteria (SRB) and methanogenic archaea (MA) perform an important step of the carbon cycle, the remineralization of organic matter in anaerobic environments. SRB and MA both utilize small carbon compounds resulting from the degradation of complex organic matter and are of global biogeochemical importance—SRB and MA may account for up to half of carbon mineralization in marine and freshwater environments, respectively (Jorgensen, 1982; Lovley *et al.*, 1982), and comprise the majority of seafloor sediment communities (D'Hondt *et al.*, 2002) that may account for up to one-third of the earth's total biomass (Whitman *et al.*, 1998). Although the potential metabolic niche space

of SRBs includes facultative acetogenic and syntrophic lifestyles (Plugge *et al.*, 2011), the ecological relationship of SRB and MA in anaerobic environments canonically depends on the availability of sulfate; where sulfate concentrations or recycling rates are high, sulfate reduction is usually a dominant process, where sulfate is limiting, methanogenesis generally predominates (Laanbroek and Veldkamp, 1982; Lovley and Klug, 1983; Widdel, 1988).

To compare and contrast the ecology of MA and SRB, MA in the genus *Methanosaeta* provide a useful model of a strict metabolic specialist as they utilize acetate as their sole electron donor, electron acceptor and carbon source (Patel and Sprott, 1990). *Methanosaeta* are thus particularly susceptible to competition from other acetate-utilizing MA (Jetten *et al.*, 1990) and SRB (Ward and Winfrey, 1985). In contrast, SRB in the genus *Desulfobulbus* are able to couple the respiration of sulfate to the oxidation of three-carbon compounds and can also grow fermentatively, mixotrophically or by using nitrate or nitrite as an alternative electron acceptor (Stams, 1984; Lien *et al.*, 1998; Sass *et al.*, 2002;

Correspondence: BB Oakley. Current address: Agricultural Research Service, USDA, Richard Russell Research Center, 950 College Station Road, Athens, GA 30605, USA.

E-mail: brian.oakley@ars.usda.gov

Received 16 June 2011; revised 19 September 2011; accepted 3 October 2011; published online 24 November 2011

Suzuki *et al.*, 2007). Because of their geochemical importance, natural ecological linkage and contrasting metabolic flexibility, *Desulfobulbus* and *Methanosaeta* represent useful model taxa to analyze microbial distribution patterns and some basic aspects of microbial ecology such as niche partitioning. In this study, we focus on niche partitioning by each of these genera and combine observational and experimental approaches to infer how niche-based processes may influence community structure.

Environmental niche specialization has been shown to be an important force structuring microbial communities (West and Scanlan, 1999; Johnson *et al.*, 2006; Hunt *et al.*, 2008), and, in the same estuarine gradient studied here, genotypes of *Desulfobulbus* have been shown to be sequentially distributed (Hawkins and Purdy, 2007; Oakley *et al.*, 2010) in a manner similar to original descriptions of the phenomenon of niche differentiation (May and MacArthur, 1972). In contrast, for *Methanosaeta*, evidence for cosmopolitan distributions of 16S rRNA genotypes has been reported (Carbonero, 2010). Until recently, however, accurate determination of microbial niche occupancy has been hindered by chronic under-sampling of clone libraries, or limited resolution of fingerprinting techniques such as denaturing gradient gel electrophoresis or terminal restriction fragment length polymorphisms. We utilized recent advances in sequencing technology (Margulies *et al.*, 2005; Hamady *et al.*, 2008) to provide a solution to this problem and combined environmental sequencing with experimental manipulations and cultivation to achieve our main objectives of comparing and contrasting the patterns and mechanisms of niche occupancy of *Methanosaeta* and *Desulfobulbus*. Because of the relative novelty of pyrosequencing and debates about its proper applications to assess microbial diversity (Huse *et al.*, 2010; Kunin *et al.*, 2010), we also developed and validated a data analysis pipeline, which can rapidly analyze pyrosequencing data.

## Materials and methods

### *Study site and sample collection*

Triplicate sediment cores for pore water analyses and DNA extractions were taken at low tide from 11 sites along the Colne estuary in September 2004 as previously described (Hawkins and Purdy, 2007). Samples for the slurry experiment were collected in September 2008 from sites 1 and 10, representing the marine and freshwater ends of the estuary, respectively.

### *Molecular methods*

**Amplification of *dsrB* and *mcrA* genes.** Amplification of a portion of the bisulfite reductase (*dsrB*) gene targeted to *Desulfobulbus* was achieved by PCR with the primers DSR458F (5'-CGCBCTGATGRATCTGTG-3'; Oakley *et al.*, 2010) and 2060F'

(5'-CAACATCGTYCATAACMCAGGG-3'; modified from (Geets *et al.*, 2006) to improve specificity) in combination with DSR4R (5'-GTGTAGCAGTTACCGCA-3'; Wagner *et al.*, 1998) as previously described (Oakley *et al.*, 2010). New primers specifically and sensitively targeting *Methanosaeta mcrA* genes were designed using sequences from the functional gene pipeline and repository (<http://fungene.cme.msu.edu/>). Based on maximum-likelihood phylogenetic reconstructions performed in ARB (Ludwig *et al.*, 2004), a monophyletic clade was identified as a target group containing sequences from environmental samples and the three described *Methanosaeta* species *M. concilii*, *M. harundinacea* and *M. thermophila*. Using a program, THERMOPHYL, we wrote for this purpose (Oakley *et al.*, 2011), we designed new primer pairs F1 (5'-CTACATGTCCG GYGGTGTC-3') and R1 (5'-TAGTTRGCGCCYCTC AKCTC-3'), and F2 (5'-GTCCGGWTTACMCAGTACGC-3') and R2 (5'-TGCCCTCGTCKGACTGGTA-3'), which were identified as optimally specific and sensitive (Oakley *et al.*, 2011) and subsequently used for empirical testing.

### *Methanosaeta-specific mcrA primer assessments.*

Primer specificity, sensitivity and amplification efficiency were evaluated empirically using genomic DNA from *M. concilii* (DSM6752), *M. harundinacea* (DSM 17206), *M. thermophila* (DSM4774), *Methanosarcina mazei* (DSM2053), *Methanosarcina acetivorans* (DSM2834) and environmental DNA from Colne Estuary sediments as previously described (Oakley *et al.*, 2011). DNA was extracted from actively growing cultures using the DNeasy Blood and Tissue kit (Qiagen, Crawley, UK) and environmental DNA was extracted from sediment samples as previously described (Purdy, 2005).

Following validation of the PCR sensitivity and specificity, the same protocol was used to amplify three technical replicates from each of three biological replicates (sediment samples taken within a 50 cm radius at each site). Products were cleaned using the QiaQuick Gel Extraction kit (Qiagen) and pooled after normalization based on quantification of PCR products using QuantIt PicoGreen (Invitrogen, Paisley, UK) as per manufacturers instructions and fluorescence measured with a Perkin-Elmer (Cambridge, UK) Wallac Victor<sup>2</sup> 1420 plate reader.

**Pyrosequencing methods.** Pyrosequencing was performed at Research and Testing Laboratory (Lubbock, TX, USA: <http://www.researchandtesting.com>). Using tagged amplicon methods similar to those described previously (Dowd *et al.*, 2008) modified for titanium chemistry (Roche, Branford, CT, USA). Twenty cycles of PCR were utilized (94 °C for 30 s, 50 °C for 30 s and 72 °C for 40 s) with a final extension at 72 °C for 10 min to incorporate the linkers and tag A 200 flow Titanium sequencing run was performed according to Roche protocols with amplicon signal processing. Following the sequencing and image processing, the

sequences were binned into individual multi-fasta files and used for data analysis.

#### Pyrosequencing analysis

**Initial quality control.** Raw sequence data were first edited and screened using a series of custom Perl and Bioperl scripts, which performed the following initial steps as per the recommendations of Kunin *et al.* (2010) and Huse *et al.* (2007): trimming of pyrosequencing tag sequences, screening for presence of PCR primer sequences and removal of sequences with one or more ambiguous base calls. Based on expected amplicon sizes and sequence length frequency distributions, sequences were limited to a range of 375–385 bp for *dsrB* and 411–419 bp for *mcrA*. Sequences passing these screens were then subjected to several additional quality control measures by translations in all three forward frames and screens for the presence of conserved amino-acid motifs. Sequences in the appropriate frame passed the screen and trailing nucleotides were trimmed to produce complete codons.

**Methodological validation.** To distinguish errors inherent to the pyrosequencing itself versus analytical errors, we pyrosequenced single colonies and compared the results of several analytical approaches. First, cell-suspension PCR was performed from single axenic colonies of a *Desulfobulbus* strain we isolated from the freshwater end of the estuary and *Methanosaeta concilii* (DSM6752) using the *dsrB* and *mcrA* PCR protocols, respectively, as described above. Next, pyrosequence data from these PCR products were compared with a reference sequence determined by bidirectional Sanger sequencing to determine a baseline error rate inherent to pyrosequencing. Pairwise comparisons were performed with a perl script using Needle–Wasserman global alignments as implemented in the EMBOSS package (Rice *et al.*, 2000) with gap-extension and gap-open parameters set to 2 and 14, respectively. Subsequently, errors introduced by commonly used multiple sequence alignment (MSA) strategies were assessed by aligning a random subset of 5000 pyrosequences using the programs mothur (Schloss *et al.*, 2009), MUSCLE (Edgar, 2004) and MAFFT (Katoh *et al.*, 2002). The alignment error for each sequence was calculated as the absolute difference in percent identity for that sequence as aligned to the reference sequence in the pairwise alignments above versus the MSA. Finally, the effect of the alignment errors on operational taxonomic unit (OTU) designations was determined by clustering sequences into OTUs using mothur. To compare these results to an alternative MSA-independent method, sequences were also clustered using CD-HIT-EST (Li and Godzik, 2006).

**Clustering and data analysis pipeline.** Sequences were grouped into similarity clusters or OTUs, by

CD-HIT-EST (Li and Godzik, 2006) with parameters set to the default recommendations except for the -g parameter, which was set to search all clusters to place a sequence into the most similar cluster, rather than the first cluster which meets the similarity threshold. The output from CD-HIT provided the input for a data analysis pipeline we constructed, which parses the clustering results, reformats the data for input into mothur and links a series of scripts in R (R Development Core Team, 2010) to produce graphical and statistical summaries of the data according to desired sampling unit. More information and the open-source code for the pipeline can be found at <http://go.warwick.ac.uk/thermophyl/pipeline>. Representative sequence data have been submitted to GenBank under accession numbers: JN684079–JN684183.

#### Phylogenetic and statistical analyses

Sequences which passed all the screens described above were aligned as nucleotides to curated seed databases based on amino-acid alignments (<http://fungene.cme.msu.edu/>) and incorporated into ARB (Ludwig *et al.*, 2004). Trees were built with maximum-likelihood and neighbor-joining algorithms in ARB and with MrBayes (Huelsenbeck and Ronquist, 2001) with the following modifications to default parameters: GTR model of evolution with gamma-distributed rate variation, number of chains set to six, numbers of swaps to three and temperature to 0.1; 200 000 generations produced stable convergence. Phylogenetic clustering was assessed with UniFrac (Lozupone and Knight, 2005) and Parsimony tests (Martin, 2002), which compare observed phylogenies with a null model derived from random permutations.

#### Slurry experiment

Sediments from the endpoints of the estuary (sites 1 and 10) were incubated in a factorial design in which sulfate and salinity were manipulated independently. For each site, three replicate sediment cores (0–5 cm depth) were taken within 50 cm of each other, and maintained at 8 °C for <12 h before initiating the experiment. Each core was homogenized and 0.4–0.5 g of sediment added to anaerobic Balch tubes containing 5 ml of medium in one of four formulations (S + /Cl +, S + /Cl –, S – /Cl +, S – /Cl –) with sulfate and chloride concentrations based on pore water concentrations at sites 1 and 10. DSMZ Medium 194 was prepared anaerobically and Na<sub>2</sub>SO<sub>4</sub>, NaCl, and MgCl<sub>2</sub> added in the amounts shown in Table 1. Carbon was provided to all treatments as sodium propionate per standard media formulation (1.5 g l<sup>-1</sup>; 15.6 mM). Propionate is degraded to acetate in sediment slurries (Purdy, 1997), which can subsequently be used by *Methanosaeta* under some circumstances. DNA was extracted according to (Purdy *et al.*, 1996) from

**Table 1** Details of sulfate and chloride additions for the reciprocal incubation experiment

Treatment	Sulfate and chloride addition ( $g\ l^{-1}$ )		
	$Na_2SO_4$	$NaCl$	$MgCl_2$
S+/Cl+	3.0	20.0	3.1
S+/Cl-	3.0	1.0	0.4
S-/Cl+	0.075	20.0	3.1
S-/Cl-	0.075	1.0	0.4

Additions were made to DSMZ Medium 194 based on pore water concentrations at sites 1 and 10 as described in the text.

sediment samples at the initiation of the experiment and after incubation at 23 °C for 7 days. Data were analyzed using the *cca* routine of the *vegan* package (Oksanen, 2010) in R (R Development Core Team, 2010).

#### *Desulfobulbus* cultivation methods

Fresh sediment samples were transferred anaerobically into enrichment media (DSMZ Medium 194) prepared as described above in liquid enrichments and agar plates. Cultures were screened for *Desulfobulbus* by PCR with the primers *dsr458F* (Oakley *et al.*, 2010) and *dsr4R* (Wagner *et al.*, 1998) and FISH using the probes EUB338 (Amann *et al.*, 1990), DSBB228 (Loy *et al.*, 2002), DSBB660 (Loy *et al.*, 2002), and a newly designed probe designated Dsb1447 (5'-CTGCCCTCGAAAGGTT-3') hybridized with 20% formamide according to standard FISH protocols (Fuchs *et al.*, 2007). Positive enrichments were transferred until an axenic culture was obtained.

## Results and discussion

### *Pyrosequencing analysis pipeline development and validation*

Based on PCR from a single colony, the error rate of pyrosequencing itself was quite low (Supplementary Figure S1A), with a mean error rate <0.5% for both genes, consistent with previous reports (Huse *et al.*, 2007). Some of this error reflects errors incorporated during PCR; error rates with the proof-reading polymerase, Pfx (Invitrogen), were indeed lower (mean of 0.10%; data not shown), but we deliberately chose to focus on error rates using protocols with Taq and nested PCR because these are often required to achieve adequate amplification from environmental DNA.

The quality of MSA is a critical but often overlooked step in determining the accuracy and reproducibility of many sequencing projects. We found that alignment errors, as distinguished from pyrosequencing errors, can produce a significant overestimation of species richness and diversity. In this study we measured alignment errors ranging from 0.25% to >1.5% (Supplementary Figure S1B). Because alignment errors disproportionately occurred

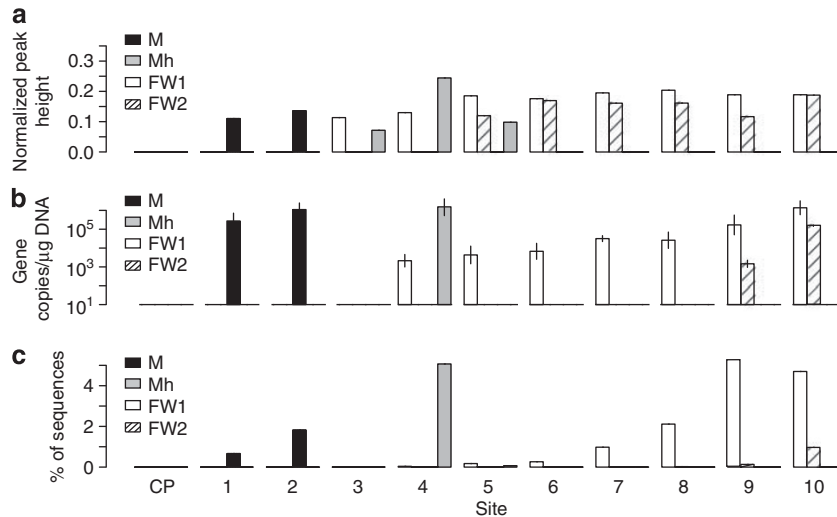
in the distal (3') end of the alignment, we appended an anchoring 18bp oligo sequence (5'-ACCACA CAAAAACCCACA-3') to both ends of each sequence to see if this improved the alignment, but it did not. Even with sequences screened to a narrow length range (370–375 bp), we still observed similar alignment errors.

To see how the accumulation of these errors affected the clustering of sequences into OTUs, we next compared several methods of designating OTUs. Using Muscle with default parameters to align a control data set of 5000 sequences obtained from a single axenic colony as described above, 43 OTUs were observed, 15 of which were singletons (Supplementary Figure S1C). Based on pairwise Needle–Wasserman alignments of each singleton sequence to each sequence in the original data set, 13 of these were designated false singletons (Supplementary Figure S1C). Using Muscle with optimized parameters resulted in fewer OTUs (29), fewer initial singletons (5) and fewer false singletons (3), but the best performance was achieved with the program CD-HIT-EST, which uses a MSA-independent method of clustering sequences and produced 12 OTUs with three true singletons (Supplementary Figure S1C). Because the greatest pairwise sequence difference strictly attributable to pyrosequencing error was below the 3% cutoff (Figure 1a) used to group sequences into OTUs, we can infer that some classification errors arose from the CD-HIT algorithm, but clearly it is more conservative than even the best MSA-based approach tested. As the control data set should represent a single OTU, conservative equated with best performance in this case. When applied to sequences from a complex community, it is possible that CD-HIT may underestimate the true diversity, but this seems unlikely given these results. For MSA, even with the small control data set (5000 sequences) used here, accurate alignment is often problematic; for the much larger data sets characteristic of most modern sequencing projects, MSA-based approaches can be intractable.

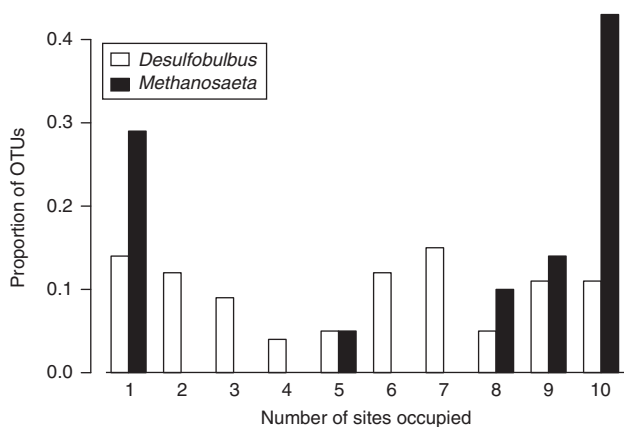
Based on these results and because CD-HIT also has the important advantage of being computationally efficient, we used CD-HIT to cluster sequences and developed an analysis pipeline to allow for automatic downstream processing of the sequence data. After clustering using the pipeline, a series of scripts in R (R Development Core Team, 2010) automatically produce graphical and statistical summaries and comparisons of the data based on user-defined sample groups. Additionally, we developed the pipeline to also allow for use of the popular program *mothur* (Schloss *et al.*, 2009) without having to cluster sequences based on MSA distance matrices.

### *Analysis of environmental mcrA and dsrB pyrosequences*

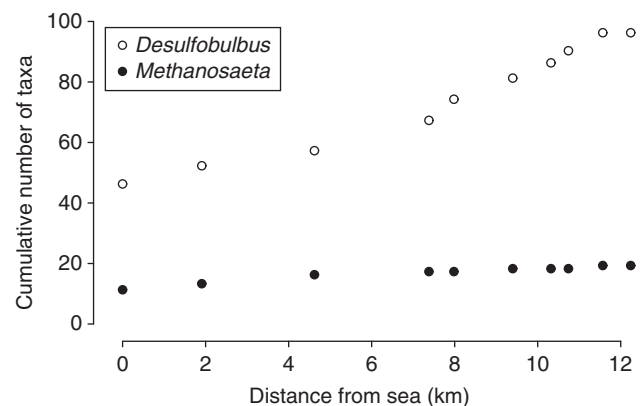
*Comparisons to previous data sets and technical replicates.* Because pyrosequencing has been shown



**Figure 1** Comparison of pyrosequencing results (c) to denaturing gradient gel electrophoresis (a) and quantitative-PCR (qPCR) (b) as determined previously (Oakley *et al.*, 2010) to survey the distribution of four *Desulfobulbus* genotypes. For the pyrosequencing results (c) the data set of ca 33 000 sequences was queried for exact matches to qPCR assays; Y-axis represents the percentage of pyrosequences corresponding to each taxon. Genotype designations are M, Marine; Mh, Mesohaline; FW1, Freshwater1; FW2, Freshwater 2. Figure is modified from Purdy (2010).



**Figure 2** Species-occupancy distributions for *Desulfobulbus* and *Methanosaeta*, showing the number of sampling sites occupied by genotypes of each taxon.



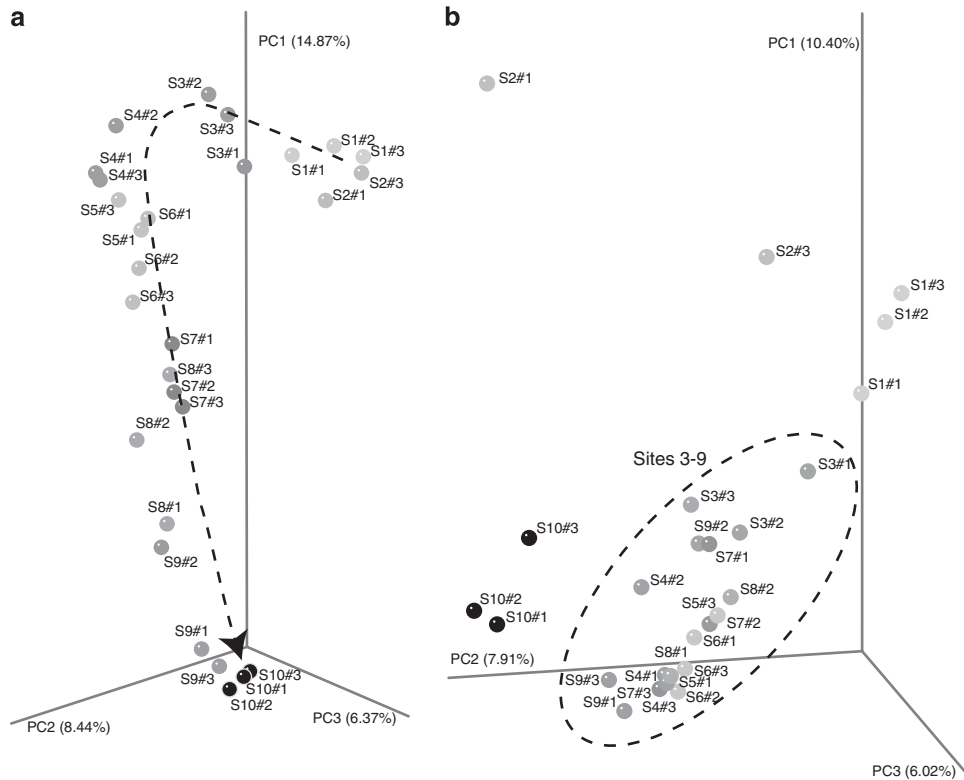
**Figure 3** Species-area curves for *Desulfobulbus* and *Methanosaeta*. Y-axis represents the cumulative number of OTUs as determined with CD-HIT as described in the methods.

to preferentially sequence certain templates, we followed recent recommendations (Gomez-Alvarez *et al.*, 2009) to run multiple technical replicates for amplicon sequencing. Analysis of OTU distributions across three technical replicates of both the *mcrA* and *dsrB* sequencing revealed largely similar results (Supplementary Figure S2). For further analyses, data from all three technical replicates were pooled to reduce technical variations. Summaries of richness and diversity parameters for the pooled sequence data are shown in Supplementary Figure S3.

As an additional test of the validity of the pyrosequencing and of our analysis pipeline applied to environmental samples, we compared the results with abundance measures of the spatial distributions of four *Desulfobulbus* genotypes we had determined previously using gradient gel electrophoresis and TaqMan quantitative-PCR (Oakley *et al.*, 2010).

The pyrosequencing results were consistent with both of these methods, with only minor differences among the three (Figure 1). With all three methods, clear distinctions could be made among genotypes associated with certain portions of the estuary—a marine (M) genotype, a mesohaline (Mh) genotype, a widely-distributed freshwater genotype (FW1) and a freshwater genotype (FW2) with a more restricted distribution (Figure 1). These patterns are similar to data collected from con-generic bird species (MacArthur, 1958), which helped to establish niche theory in the field of ecology based on the inference that the distribution of taxa in space reflects optimization of an *n*-dimensional space of biotic and abiotic variables.

*Species-occupancy patterns.* To give additional insights into the distribution patterns of *Desulfobulbus*



**Figure 4** Phylogenetic clustering of sample sites based on PCA of phylogenetic position of each sequence as determined by UniFrac for *Desulfobulbus* (a) and *Methanosaeta* (b). Sequences were aligned and neighbor-joining trees containing all sequences constructed for each taxon as fully described in the methods. Points represent biological replicates for each sample site.

and *Methanosaeta*, we next performed a species-occupancy analysis (He and Gaston, 2003) to determine the number of sampling sites occupied by each taxon (Figure 2). Two conclusions were clear from this analysis. First, most *Methanosaeta* genotypes (ca 2/3) were found at many sites (eight or more) but nearly all the rest (ca 1/3) were found only at one site; these were the marine genotypes (Figure 2). Second, in contrast to the bimodal frequency distribution of *Methanosaeta*, *Desulfobulbus* genotypes were relatively evenly distributed across the range of what can be interpreted as ‘specialist’ genotypes restricted to a single site and ‘generalist’ genotypes encountered in all 10 sites (Figure 2). Nearly 60% of *Desulfobulbus* genotypes were present at between two to seven sites (Figure 2). Based on these results, we concluded that *Desulfobulbus* genotypes can represent a full range of niche-occupancy patterns, from specialist to generalist, whereas *Methanosaeta* are generally either found across nearly the whole length of the estuary (generalists) with some genotypes restricted to a single site (specialists).

**Species-area relationships.** If *Desulfobulbus* does indeed occupy more niche spaces than *Methanosaeta*, a logical prediction is that more genotypes should be encountered when the same geographic area is sampled. Such relationships, known as species-area curves, have a long history as a description of beta diversity and as a means of

understanding the ecology of an organism and its adaptations to different habitats (Arrhenius, 1921; He and Legendre, 1996). For *Desulfobulbus* and *Methanosaeta*, a comparison of species-area curves revealed dramatic differences—starting from the marine end of the estuary, *Desulfobulbus* has more genotypes than *Methanosaeta*, and novel genotypes are continually encountered as one moves up the estuary (Figure 3). In contrast, *Methanosaeta* populations are relatively depauperate and nearly all the genotypes present in the estuary have already been encountered simply by sampling the marine end of the estuary (Figure 3). These patterns obviously reflect the taxonomic definition chosen—we used a sequence-similarity cutoff of 85% for both taxa (chosen to roughly represent sequence divergence of these functional genes among described species), but other cutoffs also produced essentially similar results. Although these data don’t reveal the processes underlying this pattern, they do provide further evidence for what can be viewed as the fine-scale niche adaptation of *Desulfobulbus* relative to *Methanosaeta*.

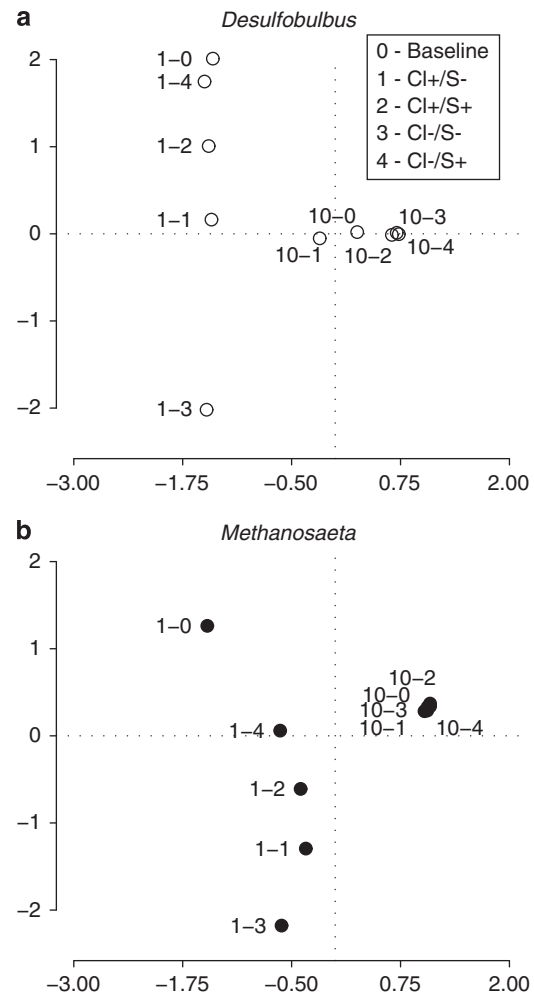
**Population distribution patterns.** To better understand the association between particular sequence types and sampling site in the estuary, we next performed a cluster analysis based on the phylogenetic position of sequences by sampling site. Based on the distribution of sequence types along the

estuarine gradient, for *Desulfobulbus*, it is clear that there is significant spatial autocorrelation of sequence types—that is, sequences originating from samples close to one another in the estuary tend to be more similar to one another than they are to sequences originating from more distant samples (Figure 4). For both taxa, there are clearly distinct clusters of sequence types representing ‘marine’ and ‘freshwater’ genotypes, but for *Desulfobulbus*, there was a clear gradient of genotypes that were distributed in a nearly linear fashion along the estuary (Figure 4a). *Desulfobulbus* genotypes from the two end points of the estuary were clearly distinct from one another and genotypes from intermediate positions in the estuary could also be distinguished as distinct clusters distributed in a strong gradient (Figure 4a). In contrast, for *Methanosaeta*, the main distinction was between estuarine and marine genotypes from the two end points of the estuary as distinct from all other locations, which clustered quite closely to one another (Figure 4b).

Taken together, these contrasting patterns of distribution suggest different models of niche differentiation for these two taxa. Although our data cannot distinguish among various evolutionary mechanisms such as drift or homologous recombination, or the importance of biogeographic factors such as dispersal, colonization and extinction, it is clear from the regular partitioning of *Desulfobulbus* that it has evolved to occupy a wide range of niche spaces from ubiquitously distributed (generalists) to narrowly distributed (specialists) in contrast to *Methanosaeta* in which the primary distinction is between marine and estuarine populations. It is possible to make several very general assumptions that perhaps shed some light on these differences between the two taxa. Based on calculations of reported doubling times for *Desulfobulbus* of around 10 h (Kuever *et al.*, 2005) versus up to 12 days for *Methanosaeta* (Patel, 2001), we can roughly estimate the approximate number of generations that have inhabited the Colne estuary since the last glaciation as circa 13 million for *Desulfobulbus* and circa 45 000 for *Methanosaeta*. This roughly 300-fold difference may contribute to the wide range of niche occupancy for *Desulfobulbus* relative to *Methanosaeta*.

#### Experimental confirmations of patterns

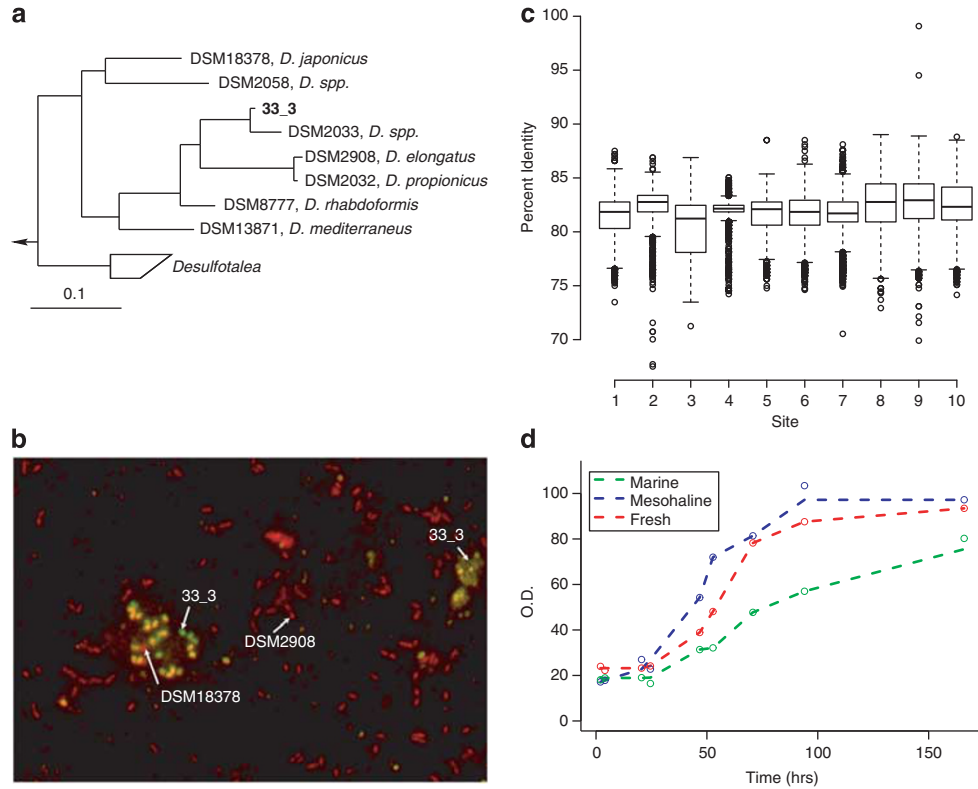
To better assess whether the differences in distributional patterns for these two taxa simply reflect environmental conditions at the time of sampling or evolutionary divergence of populations adapted to conditions at a particular geographic location, we next performed a reciprocal incubation experiment in which sediments from either end of the estuary were incubated in growth media mimicking both native and contrasting conditions. We used pyrosequencing to compare the communities at the two endpoints of the estuary to determine if one community would come to resemble the other given the appropriate environment. It did not (Figure 5).



**Figure 5** Response of (a) *Desulfobulbus* and (b) *Methanosaeta* populations to sediment slurry reciprocal incubation experiment. Graphs represent CCA results based on OTU distributions calculated from pyrosequencing with *dsrB* and *mcrA* primers as described in the methods. Sampling site (1 or 10) is designated before the dash; experimental treatments are designated after the dash as shown in the legend. Axes represent first two eigenvectors from each CCA. Exact media formulations are given in Table 1.

In fact, for both taxa, the results were remarkably similar—populations from site 1 were very responsive to environmental conditions, whereas those from site 10 remained largely unchanged, and populations from sites 1 and 10 remained clearly distinct regardless of environmental conditions (Figure 5). Factors other than salinity and sulfate can of course affect these communities, but for two other potentially significant variables, temperature and organic carbon availability, there is no substantial variation across the 15 km of this estuary (Dong *et al.*, 2006). The results of the experiment support a biogeographic hypothesis that populations in the sediments at these two sites are so different that they will not come to resemble the other site, regardless of environment.

*Realized versus potential niche space.* To further understand the factors determining niche space for



**Figure 6** Natural distribution and growth medium preferences of a novel isolate designated 33\_3 recovered from the Colne estuary. **(a)** Phylogenetic position of 33\_3 relative to reference *Desulfobulbus* spp. based on sequences of the same region of the *dsrB* gene used for pyrosequence analysis. **(b)** 33\_3 grown with *D. elongatus* (DSM2908) and *D. japonicus* (DSM18378) and shown by fluorescence *in situ* hybridization with the probes Dsbb660-Cy3 and a newly-designed probe Dsb1447-Alx488 to target 33\_3 as described in the methods. **(c)** Natural distribution of 33\_3 sequence type in the Colne estuary as determined by pairwise sequence comparison with all *dsrB* pyrosequences. For boxplots, horizontal bars indicate mean, boxes enclose 25th–75th percentile of data, whiskers indicate 10th–90th percentiles and circles indicate outliers of pairwise comparisons of 33\_3 *dsrB* sequence with pyrosequences from each site. **(d)** Growth curves of 33\_3 in marine, mesohaline and freshwater media. Media formulations were based on DSMZ Medium 194 as described in the text and shown in Table 1, with marine medium equivalent to the S+/Cl<sup>-</sup> treatment, freshwater medium equivalent to S+/Cl<sup>-</sup> and mesohaline medium with intermediate concentrations of NaCl and MgCl<sub>2</sub>.

these taxa, we used cultivation as an alternative and complementary approach to our observational and experimental uses of pyrosequencing. An axenic culture of *Desulfobulbus* (termed ‘33\_3’) was recovered from site 10 using anaerobic enrichment techniques in liquid and solid media (Figures 6a and b). We were also able to cultivate *Methanosaeta* from the Colne estuary (Carbonero *et al.*, 2010), but the slow growth rates and clumping growth habits of these archaeal isolates made experimental manipulations difficult.

We were first interested in understanding the natural distribution of the *Desulfobulbus* isolate and so queried our pyrosequencing data set for sequence similarity to the *dsr* sequence of 33\_3. Intriguingly, we found that 33\_3 is quite an unusual sequence type that was sparsely represented in the pyrosequencing survey—only a single sequence had >95% nucleotide similarity to 33\_3 as determined by pairwise global alignments (Figure 6c). This single best match had five nucleotide mismatches (out of ca 400bp) to the 33\_3 *dsr* sequence, and interestingly, all of these were synonymous muta-

tions. Although 33\_3 was isolated from site 10 sediment collected in 2007, we only found it at site 9 in the pyrosequencing data from sediment collected in 2004. This either reflects undersampling of the pyrosequencing, or more likely, slight temporal shifts in distribution such as those described previously (Hawkins and Purdy, 2007; Oakley *et al.*, 2010). Regardless, it is clear that the distribution of 33\_3 is quite narrow.

Taking this distribution as a direct measure of the realized niche space of 33\_3, we then compared this with the potential environmental niche space as measured by growth in media representing a gradient of estuarine conditions (Figure 6d). Clearly, the realized niche is quite a bit smaller than the potential niche—replicate experiments showed that strain 33\_3 actually grows slightly better in mesohaline media than freshwater media (Figure 6d). Although the exact mechanisms restricting niche space and their relative influences remain unclear, the distribution of these taxa appears to represent a dynamic combination of abiotic and biotic factors.



## Conclusions

The results of our pyrosequencing data were consistent with previous approaches based on denaturing gradient gel electrophoresis, Sanger sequencing of clone libraries and quantitative-PCR (Hawkins and Purdy, 2007; Carbonero, 2010; Oakley *et al.*, 2010). However, because pyrosequencing provided several orders of magnitude more data than previously obtained, we were also able to properly employ a species-occupancy analysis to better understand the ecology of our model taxa. Our data reiterate the utility of pyrosequencing for microbial ecology, provided proper care is taken in the treatment and analysis of the data. In particular, we found MSA to be a crucial source of errors, and so chose to cluster our sequences with CD-HIT (Li and Godzik, 2006) to avoid both the computational challenges and potential for analytical errors introduced by MSA.

The majority of *Methanosaeta* sequences were cosmopolitan whereas the majority of *Desulfobulbus* sequences were restricted to particular sampling sites. Reciprocal-incubation experiments showed that sediment communities from opposite ends of the estuary differ independently of the chemical environment, consistent with biogeographic predictions. Experiments with a novel *Desulfobulbus* isolate demonstrated that the realized niche is substantially more constrained than the potential niche, consistent with ecological niche constraints as experienced by macroorganisms.

## Acknowledgements

This study is part of the Marie Curie Excellence Grant for Teams project, MicroComXT, (MEXT-CT-2005-024112) funded under FP6. RJH was supported by the UK Natural Environment Research Council. We thank Tom Lie, Martin Ostrowski, Andy Millard and Kevin Gaston for helpful discussions.

## References

- Amann RI, Binder BJ, Olson RJ, Chisholm SW, Devereux R, Stahl DA. (1990). Combination of 16S rRNA-targeted oligonucleotide probes with flow cytometry for analyzing mixed microbial populations. *Appl Environ Microbiol* **56**: 1919–1925.
- Arrhenius O. (1921). Species and area. *J Ecol* **9**: 95–99.
- Carbonero F. (2010). *Distributions of Model Microorganisms Along an Estuarine Gradient*. Department of Biological Sciences, University of Warwick: Coventry, p 151.
- Carbonero F, Oakley BB, Purdy KJ. (2010). Improving the isolation of anaerobes on solid media: the example of the fastidious *Methanosaeta*. *J Microbiol Methods* **80**: 203–205.
- Dong LF, Nedwell DB, Stott A. (2006). Sources of nitrogen used for denitrification and nitrous oxide formation in sediments of the hypernutrified Colne, the nutrified Humber, and the oligotrophic Conwy estuaries, United Kingdom. *Limnol Oceanography* **51**: 545–557.
- Dowd SE, Sun Y, Wolcott RD, Domingo A, Carroll JA. (2008). Bacterial tag-encoded FLX amplicon pyrosequencing (bTEFAP) for microbiome studies: bacterial diversity in the ileum of newly weaned Salmonella-infected pigs. *Foodborne Pathog Dis* **5**: 459–472.
- D'Hondt S, Rutherford S, Spivack AJ. (2002). Spivack, Metabolic activity of subsurface life in deep-sea sediments. *Science* **295**: 2067–2070.
- Edgar RC. (2004). MUSCLE: a multiple sequence alignment method with reduced time and space complexity. *BMC Bioinformatics* **5**: 113.
- Fuchs BM, Pernthaler J, Amann R. (2007). Single cell identification by fluorescence *in situ* hybridization. In: Reddy CA *et al.* (eds). *Methods for General and Molecular Microbiology*. ASM Press: Washington, DC, pp 886–896.
- Geets J, Borremans B, Diels L, Springael D, Vangronsveld J, van der Lelie D *et al.* (2006). DsrB gene-based DGGE for community and diversity surveys of sulfate-reducing bacteria. *J Microbiol Methods* **66**: 194–205.
- Gomez-Alvarez V, Teal TK, Schmidt TM. (2009). Systematic artifacts in metagenomes from complex microbial communities. *ISME J* **3**: 1314–1317.
- Hamady M, Walker JJ, Harris JK, Gold NJ, Knight R. (2008). Error-correcting barcoded primers for pyrosequencing hundreds of samples in multiplex. *Nat Methods* **5**: 235–237.
- Hawkins RJ, Purdy KJ. (2007). Genotypic distribution of an indigenous model microorganism along an estuarine gradient. *FEMS Microbiol Ecol* **62**: 187–194.
- He F, Legendre P. (1996). On species-area relations. *Am Nat* **148**: 719–737.
- He F, Gaston KJ. (2003). Occupancy, spatial variance, and the abundance of species. *Am Nat* **162**: 366–375.
- Huelsenbeck JP, Ronquist F. (2001). MRBAYES: Bayesian inference of phylogenetic trees. *Bioinformatics* **17**: 754–755.
- Hunt DE, David LA, Gevers D, Preheim SP, Alm EJ, Polz MF. (2008). Resource partitioning and sympatric differentiation among closely related bacterioplankton. *Science* **320**: 1081–1085.
- Huse SM, Huber JA, Morrison HG, Sogin ML, Welch DM. (2007). Accuracy and quality of massively parallel DNA pyrosequencing. *Genome Biol* **8**: R143.
- Huse SM, Welch DM, Morrison HG, Sogin ML. (2010). Ironing out the wrinkles in the rare biosphere through improved OTU clustering. *Environ Microbiol* **12**: 1889–1898.
- Jetten MSM, Stams AJM, Zehnder AJB. (1990). Acetate threshold values and acetate activating enzymes in methanogenic bacteria. *Fems Microbiol Lett* **73**: 339–344.
- Johnson ZI, Zinser ER, Coe A, McNulty NP, Woodward EM, Chisholm SW. (2006). Niche partitioning among *Prochlorococcus* ecotypes along ocean-scale environmental gradients. *Science* **311**: 1737–1740.
- Jorgensen BB. (1982). Mineralisation of organic matter in the sea-bed—the role of sulfate reduction. *Nature* **296**: 643–645.
- Katoh K, Misawa K, Kuma K, Miyata T. (2002). MAFFT: a novel method for rapid multiple sequence alignment based on fast fourier transform. *Nucleic Acids Res* **30**: 3059–3066.
- Kuever J, Rainey FA, Widdel F. (2005). *Desulfobulbus*. In: Garrity GM (ed.). *Bergey's Manual of Systematic Bacteriology. Volume 2: The Proteobacteria; Part C The Alpha-, Beta-, Delta and Epsilonproteobacteria*. Springer: New York, pp 988–992.
- Kunin V, Engelbrektson A, Ochman H, Hugenholtz P. (2010). Wrinkles in the rare biosphere: pyrosequencing errors can lead to artificial inflation of diversity estimates. *Environ Microbiol* **12**: 118–123.

- Laanbroek HJ, Veldkamp H. (1982). Microbial interactions in sediment communities. *Philos Trans R Soc Lond B Biol Sci* **297**: 533–550.
- Li W, Godzik A. (2006). Cd-hit: a fast program for clustering and comparing large sets of protein or nucleotide sequences. *Bioinformatics* **22**: 1658–1659.
- Lien T, Madsen M, Steen IH, Gjerdevik K. (1998). *Desulfobulbus rhabdiformis* sp. nov., a sulfate reducer from a water-oil separation system. *Int J Syst Bacteriol* **48**(Part 2): 469–474.
- Lovley DR, Klug MJ. (1983). Sulfate reducers can out compete methanogens at freshwater sulfate concentrations. *Appl Environ Microbiol* **45**: 187–192.
- Lovley DR, Dwyer DF, Klug MJ. (1982). Kinetic analysis of competition between sulfate reducers and methanogens for hydrogen in sediments. *Appl Environ Microbiol* **43**: 1373–1379.
- Loy A, Lehner A, Lee N, Adamczyk J, Meier H, Ernst J *et al.* (2002). Oligonucleotide microarray for 16S rRNA gene-based detection of all recognized lineages of sulfate-reducing prokaryotes in the environment. *Appl Environ Microbiol* **68**: 5064–5081.
- Lozupone C, Knight R. (2005). UniFrac: a new phylogenetic method for comparing microbial communities. *Appl Environ Microbiol* **71**: 8228–8235.
- Ludwig W, Strunk O, Westram R, Richter L, Meier H, Yadhukumar *et al.* (2004). ARB: a software environment for sequence data. *Nucleic Acids Res* **32**: 1363–1371.
- Macarthur RH. (1958). Population ecology of some warblers of northeastern coniferous forests. *Ecology* **39**: 599–619.
- Margulies M, Egholm M, Altman WE, Attiya S, Bader JS, Bembem LA *et al.* (2005). Genome sequencing in microfabricated high-density picolitre reactors. *Nature* **437**: 376–380.
- Martin AP. (2002). Phylogenetic approaches for describing and comparing the diversity of microbial communities. *Appl Environ Microbiol* **68**: 3673–3682.
- May RM, Macarthur RH. (1972). Niche Overlap as a Function of Environmental Variability. *Proc Natl Acad Sci USA* **69**: 1109–1113.
- Oakley BB, Carbonero F, van der Gast CJ, Hawkins RJ, Purdy KJ. (2010). Evolutionary divergence and biogeography of sympatric niche-differentiated bacterial populations. *ISME J* **4**: 488–497.
- Oakley BB, Dowd SE, Purdy KJ. (2011). ThermoPhyl: a software tool for selecting phylogenetically optimized conventional and quantitative-PCR taxon-targeted assays for use with complex samples. *FEMS Microbiol Ecol* **77**: 17–27.
- Oakley BB, Carbonero F, van der Gast CJ, Hawkins RJ, Purdy KJ. (2010). Evolutionary divergence and biogeography of sympatric niche-differentiated bacterial populations. *ISME J* **4**: 488–497.
- Oksanen J, Blanchet FG, Kindt R, Legendre P, O'Hara RB, Simpson GL *et al.* (2010). *vegan: Community Ecology Package*. R package version 1.17-4.
- Patel GB. (2001). Methanosaeta. In: Garrity GM (ed.). *Bergey's Manual of Systematic Bacteriology. Volume 1: The Archaea and the Deeply Branching and Phototrophic Bacteria*. Springer: New York, pp 289–294.
- Patel GB, Sprott GD. (1990). *Methanosaeta concilii* gen. nov., sp. nov. ('*Methanothrix concilii*') and *Methanosaeta thermoacetophila* nom. rev., comb. nov. *Int J Syst Bacteriol* **40**: 79–82.
- Plugge CM, Plugge CM, Zhang W, Scholten JC, Stams AJ. (2011). Metabolic flexibility of sulfate-reducing bacteria. *Front Microbiol* **2**: 1–8.
- Purdy KJ. (2005). Nucleic acid recovery from complex environmental samples. *Methods Enzymol* **397**: 271–292.
- Purdy KJ, Hurd PJ, Moya-Laran J, Trimmer M, Oakley BB, Woodward G. (2010). Systems biology for ecology: from molecules to ecosystems. In: Guy W (ed.). *Advances in Ecological Research*. Academic Press: San Diego, USA, pp 87–149.
- Purdy KJ, Embley TM, Takii S, Nedwell DB. (1996). Rapid Extraction of DNA and rRNA from Sediments by a Novel Hydroxyapatite Spin-Column Method. *Appl Environ Microbiol* **62**: 3905–3907.
- Purdy KJ, Nedwell DB, Embley TM, Takii S. (1997). Use of 16S rRNA-targeted oligonucleotide probes to investigate the occurrence and selection of sulphate-reducing bacteria in response to nutrient addition to sediment slurry microcosms from a Japanese estuary. *FEMS Microbiol Ecol* **24**: 221–234.
- R Development Core Team (2010). *R: a language and environment for statistical computing*. R Foundation for Statistical Computing: Vienna, Austria.
- Rice P, Longden I, Bleasby A. (2000). EMBOSS: the European molecular biology open software suite. *Trends Genet* **16**: 276–277.
- Sass A, Sass A, Rütters H, Cypionka H, Sass H. (2002). *Desulfobulbus mediterraneus* sp. nov., a sulfate-reducing bacterium growing on mono- and disaccharides. *Arch Microbiol* **177**: 468–474.
- Schloss PD, Westcott SL, Ryabin T, Hall JR, Hartmann M, Hollister EB *et al.* (2009). Introducing mothur: open-source, platform-independent, community-supported software for describing and comparing microbial communities. *Appl Environ Microbiol* **75**: 7537–7541.
- Stams AJM, Kremer DR, Weenk GH, Hansen TA. (1984). Pathway of propionate formation in *Desulfobulbus propionicus*. *Arch Microbiol* **139**: 167–173.
- Suzuki D, Ueki A, Amaishi A, Ueki K. (2007). *Desulfobulbus japonicus* sp. nov., a novel Gram-negative propionate-oxidizing, sulfate-reducing bacterium isolated from an estuarine sediment in Japan. *Int J Syst Evol Microbiol* **57**: 849–855.
- Wagner M, Roger AJ, Flax JL, Brusseau GA, Stahl DA. (1998). Phylogeny of dissimilatory sulfite reductases supports an early origin of sulfate respiration. *J Bacteriol* **180**: 2975–2982.
- Ward DM, Winfrey MR. (1985). Interactions between methanogenic and sulfate-reducing bacteria in sediments In: Jannasch HW, Williams PJJ (eds). *Advances in Microbial Ecology*. Plenum Press: New York, pp 219–286.
- West NJ, Scanlan DJ. (1999). Niche-partitioning of *Prochlorococcus* populations in a stratified water column in the eastern North Atlantic Ocean. *Appl Environ Microbiol* **65**: 2585–2591.
- Whitman WB, Coleman DC, Wiebe WJ. (1998). Prokaryotes: the unseen majority. *Proc Natl Acad Sci USA* **95**: 6578–6583.
- Widdel F. (1988). Microbiology and ecology of sulfate- and sulfur-reducing bacteria, In: Zehnder AJB (ed.). *Biology of Anaerobic Organisms*. John Wiley & Sons, Inc.: New York, pp 469–585.

Supplementary Information accompanies the paper on The ISME Journal website (<http://www.nature.com/ismej>)