

## REVIEW

# Genetics and evolution of triatomines: from phylogeny to vector control

S Gourbière<sup>1,2</sup>, P Dorn<sup>3</sup>, F Tripet<sup>4</sup> and E Dumonteil<sup>5</sup>

Triatomines are hemipteran bugs acting as vectors of the protozoan parasite *Trypanosoma cruzi*. This parasite causes Chagas disease, one of the major parasitic diseases in the Americas. Studies of triatomine genetics and evolution have been particularly useful in the design of rational vector control strategies, and are reviewed here. The phylogeography of several triatomine species is now slowly emerging, and the struggle to reconcile the phenotypic, phylogenetic, ecological and epidemiological species concepts makes for a very dynamic field. Population genetic studies using different markers indicate a wide range of population structures, depending on the triatomine species, ranging from highly fragmented to mobile, interbreeding populations. Triatomines transmit *T. cruzi* in the context of complex interactions between the insect vectors, their bacterial symbionts and the parasites; however, an integrated view of the significance of these interactions in triatomine biology, evolution and in disease transmission is still lacking. The development of novel genetic markers, together with the ongoing sequencing of the *Rhodnius prolixus* genome and more integrative studies, will provide key tools to expanding our understanding of these important insect vectors and allow the design of improved vector control strategies.

*Heredity* (2012) **108**, 190–202; doi:10.1038/hdy.2011.71; published online 7 September 2011

**Keywords:** Chagas disease; phylogeny; population genetics; community epidemiology; *Trypanosoma*

## TRIATOMINES AND CHAGAS DISEASE

Chagas disease is one of the most neglected tropical diseases, named after the Brazilian physician Carlos Chagas who first described it 100 years ago. It is caused by the protozoan kinetoplastid parasite *Trypanosoma cruzi*, which is transmitted to mammalian hosts primarily by blood-feeding insect vectors of the Reduviidae family. *T. cruzi* infection affects 9–11 million people, mostly in Latin America, but international migration means it is now a global disease reaching vector-free areas (WHO, 2007; Gurtler *et al.*, 2008; Jackson *et al.*, 2009).

Because of limited therapeutic options, most control efforts have focused on the elimination of triatomine vectors from houses, usually by application of residual insecticides and/or housing improvement (Dias *et al.*, 2002). Research devoted to understanding of triatomine biology, genetics and evolution has supported rational vector control strategies; the latter two are reviewed here.

Triatomines are hemipteran (true) bugs, which go through five nymphal stages before reaching the adult stage. At least one blood meal is required to molt into the next stage. The development from egg to adult lasts 3–6 months depending on the species and feeding frequency, and insects can live from 6 months to 2 years (Beard, 2005). Triatomines become infected when they feed on a mammalian host infected with *T. cruzi*. The parasites then multiply in the insect's guts and can be transmitted to a new host during a subsequent blood meal when accompanied by defecation of the vector as infective parasites

are passed in the feces. The parasite can then enter the mammalian host through microlesions of the skin or through mucous membranes (Beard, 2005).

Some triatomine species have been able to adapt to human housing, becoming domiciliated, and are thus very effective vectors of Chagas disease owing to the extensive contacts with humans. Others have remained more sylvatic (remaining in wild areas), and only occasionally invade houses and may then feed on humans (Beard, 2005).

## SYSTEMATICS AND PHYLOGENY

Most triatomine species (subfamily Triatominae) and 14 of the 15 known genera occur in the New World (Figure 1); one genus is unique to Asia and the genus *Triatoma* is found both in Asia and America. The evolution and diversification of the Triatominae is thought to have coincided with that of mammals and birds during the Jurassic period (Schofield, 2000, Tartarotti *et al.* 2006). They belong to the Reduviidae (Heteroptera), a much older family of predatory bugs (already present in the Permian–Triassic period) with a worldwide distribution that feeds on other insects rather than sucking blood (Schofield, 2000). It is believed that the evolution of the Cimicidae blood-sucking bugs in Africa preceded that of Triatominae in America and thus prevented their expansion on the African continent by occupying their potential ecological niche (Tartarotti *et al.* 2006).

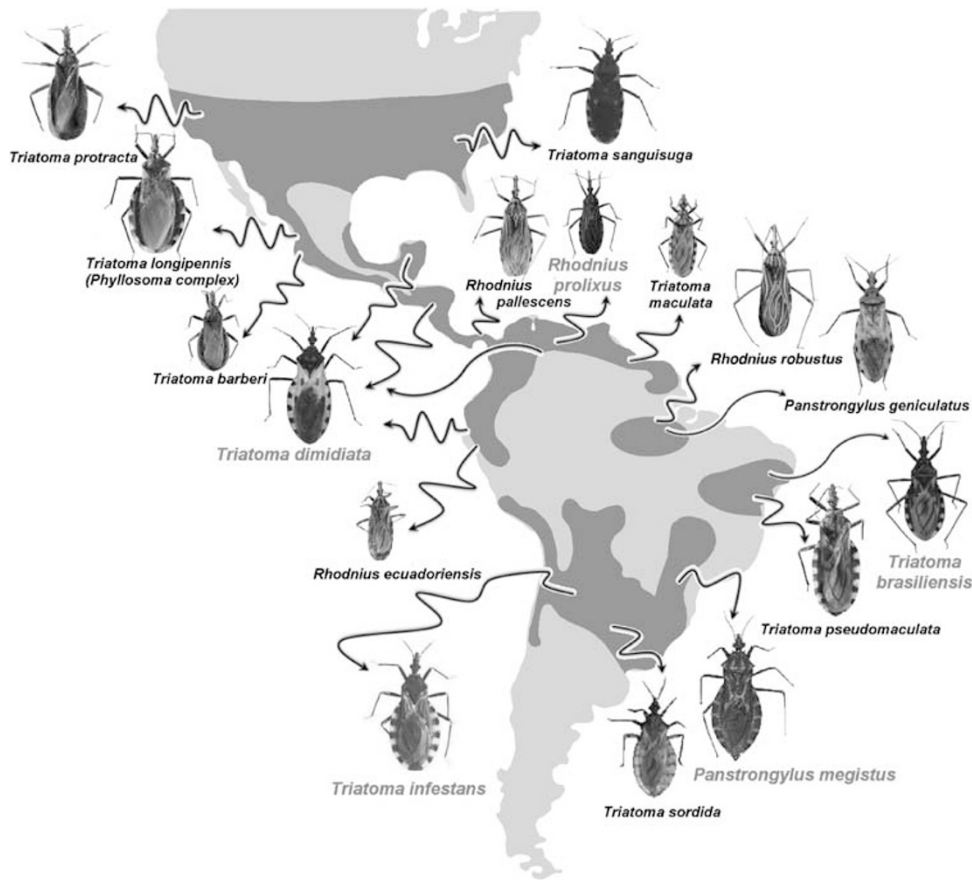
The task of classifying the currently 140 recognized triatomine species and understanding their evolutionary relationships is not

<sup>1</sup>UMR 5244 CNRS-UPVD 'Ecologie et Evolution des Interactions', Université de Perpignan Via Domitia, Perpignan, France; <sup>2</sup>Centre for the Study of Evolution, School of Life Sciences, University of Sussex, Brighton, UK; <sup>3</sup>Department of Biological Sciences, Loyola University New Orleans, New Orleans, LA, USA; <sup>4</sup>Centre for Applied Entomology and Parasitology, Keele University, Newcastle-under-Lyme, UK and <sup>5</sup>Laboratorio de Parasitología, Centro de Investigaciones Regionales 'Dr Hideyo Noguchi', Universidad Autónoma de Yucatán, Mérida, Mexico

Correspondence: Professor E Dumonteil, Laboratorio de Parasitología, Centro de Investigaciones Regionales 'Dr Hideyo Noguchi', Universidad Autónoma de Yucatán, Ave. Itzaes #490 x 59, Mérida 97000, Yucatan, Mexico.

E-mail: oliver@uady.mx

Received 23 February 2011; revised 20 July 2011; accepted 25 July 2011; published online 7 September 2011



**Figure 1** Distribution of triatomine species of major epidemiological relevance. Only about 20 triatomine species are responsible for *T. cruzi* transmission to humans, because of their ability to infest and, for some species, to colonize human habitat. The red areas indicate the approximate species geographic distribution. Species highlighted in red are considered the most important vectors of the parasite.

simple (Schofield and Galvão, 2009). It is important to stress that, because triatomine research is driven by their medical importance, the focus is often on ‘epidemiological types’ because they are more relevant to Chagas disease epidemiology and vector control than classical taxonomical distinctions. Thus, only about 20 species from the genera *Triatoma*, *Rhodnius* and *Panstrongylus* are particularly relevant for *T. cruzi* transmission to humans, and most studies focus on these species (Figure 1). Epidemiologically, *Triatoma infestans*, *Triatoma dimidiata*, *Triatoma brasiliensis*, *Rhodnius prolixus* and *Panstrongylus megistus* are considered the most important primary vectors. The reconciliation of the phenotypic, phylogenetic and ecological/epidemiological species concepts, and application of distinct methodologies, makes for a very dynamic field of research in medical entomology.

#### Triatomine species identification: interbreeding, cytotypes and species complexes

Because of differences in vectorial capacity among triatomine species, their correct taxonomic identification is a first key step for vector surveillance and control programs. The current classification of the Triatominae into five tribes and 15 genera is largely based on morphological characters, including chromatic ones (Lent and Wygodzinsky, 1979). The most commonly used characters are head and wing shape (Dujardin *et al.*, 1999b; dos Santos *et al.*, 2003; Dumonteil *et al.*, 2007), but a number of other characters have been

used such as the structure of the male genitalia (Obara *et al.*, 2007), the egg (dos Santos *et al.*, 2009), antenna (Silva *et al.*, 2002; Catala *et al.*, 2005) and rostrum (Silva *et al.*, 2003). Within the triatomines, for example, the monophyly of the Rhodiniini tribe has been supported by apical antenna insertion, body forms, post-ocular callosities, male genital characteristics, egg surface architecture and salivary gland protein composition (Tartarotti *et al.*, 2006).

Morphological characters can distinguish the vast majority of triatomine species (Carbajal de la Fuente *et al.*, 2011). Recently diverged species can sometimes be differentiated (Gurgel-Goncalves *et al.*, 2010) or be remarkably isomorphic, making the detection and description of cryptic taxa difficult (Abad-Franch and Monteiro, 2005; Nouvellet *et al.*, 2011). A good example of the underlying taxonomic structure, which could not be resolved by morphological studies alone, is the *Triatoma sordida* species complex whose Argentinean, Brazilian and Bolivian member species could only be described thanks to additional tools such as cytogenetics and molecular markers (Dujardin *et al.*, 1999b). Other triatomine species show such high levels of phenotypic plasticity that they were erroneously split into several species. For example, chromatic variants of *T. infestans* (one of the most important vectors found in Peru, Bolivia, Brazil, Chile, Paraguay, Uruguay and Argentina) were considered a different species (*Triatoma melanosoma* in Argentina) or variants (a ‘dark morph’ in Bolivia). However, these ‘species’ or variants produced fertile offsprings with *T. infestans* and no difference was found using cytogenetics and

molecular markers (Noireau *et al.*, 1997; Dujardin *et al.*, 1999a; Monteiro *et al.*, 1999; Bargues *et al.*, 2006). Similarly, revisions are underway in the *Phyllosoma* complex, which includes important vectors species in Mexico, all of which are interfertile, so also suspected of incorrect species-level designations (Martinez-Ibarra *et al.*, 2009; Martinez-Hernandez *et al.*, 2010).

There are countless examples in which experimental crosses have been used to complement morphological studies when the latter lead to inconclusive results (Perez *et al.*, 1992), and these still have an important role in clarifying the specific and sub-specific status in triatomine species complexes. For example, crosses were instrumental in establishing the specific status of *Triatoma pseudomaculata*, an important sylvatic vector in Brazil (Corrêa and Espínola, 1964). They also helped in distinguishing *Rhodnius prolixus* and *Rhodnius robustus*, the main vectors of Chagas disease in Venezuela, Colombia and some other regions of central America (Galíndez-Giron *et al.*, 1994). As mentioned previously, crosses were important in clarifying taxonomy in the *Infestans* complex (Abalos, 1948; Franca, 1985; Monteiro *et al.*, 1999), and more recently, the *Phyllosoma* complex (Martinez-Ibarra *et al.*, 2009; Martinez-Hernandez *et al.*, 2010).

As in the Diptera, cytogenetics has been an essential tool in Triatominae systematics since the early 1900s (Payne, 1909) and is still very much in use in combination with molecular markers (Bargues *et al.*, 2006; dos Santos *et al.*, 2007). An interesting application involves cytogenetics used in combination with crosses to study karyotypic evolution or 're-patterning' (Perez *et al.*, 2005).

Triatomines show high chromosome homogeneity; nearly all have 20 autosomes and most South American species show two sex chromosomes (XY). Secondary fragmentation is thought to have led to the few instances of 2 or 3 X-chromosomes ( $X_1X_2Y$  and  $X_1X_2X_3Y$ ) (Perez *et al.*, 1992) found in some Central and North American species (Panzera *et al.*, 2010). Triatomine chromosomes are holocentric (that is, centromeric activity is spread over the entire chromosomal arm) and unlike the large polytenic metacentric chromosomes of the Diptera, which show clear euchromatic banding patterns, they yield very little information in terms of chromosomal polymorphism. Cytogeneticists have concentrated instead on comparing different stages of meiosis between putative species using c-banding staining, which marks constitutive heterochromatin and allows the identification of distinct heterochromatic blocks along chromosomes (Perez *et al.*, 1992).

Cytogenetic comparisons have helped clarify the *T. sordida* complex of 'isomorphic' species. They highlighted chromosomal differences between the smaller and darker Argentinean populations of *T. sordida* (previously known as *Triatoma garciabesi*) and Brazilian populations, as well as between *T. sordida* and other closely related species of the complex (Panzera *et al.*, 1997).

Interestingly, chromosomes are often marked by intraspecific polymorphism in heterochromatic content (Panzera *et al.*, 1992; Panzera *et al.*, 2004). For example, the Andean populations of *T. infestans* present a 50% higher constitutive heterochromatin content than the non-Andean populations. This led to the suggestion that recent colonization of new habitats has been accompanied by genome reduction (Panzera *et al.*, 2004), but intermediate forms have been described in northern Argentina, which complicates phylogeographic interpretation (Monteiro *et al.*, 2010). In recent studies, measurements of haploid genome size have been used to complement c-banding karyotype comparisons (Panzera *et al.*, 2004) or to corroborate molecular data (Bargues *et al.*, 2006).

Cytogenetics also had a crucial role in the ongoing description of *T. dimidiata*. This species presents morphologically variable populations,

but early attempts to delineate geographic boundaries between them failed, and clinal variation was proposed to explain this species' extensive polymorphism (reviewed by Dorn *et al.*, 2007). Later on however, a combination of morphology, cytogenetics and molecular data led to the unambiguous detection of a cryptic taxon and the recognition of the *Dimidiata* species complex (Marcilla *et al.*, 2001; Panzera *et al.*, 2006; Dorn *et al.*, 2007, 2009).

In the 1980s, isozyme analysis was first applied to population genetic questions of triatomines. Fixed allelic differences characterizing certain sympatric populations were quickly recognized as proof of their reproductive isolation, hence potential specific status. A good example was the 'chance' discovery of two reproductively isolated sylvatic populations of *T. sordida* in a study of genetic divergence between *T. sordida* and a closely related species, *T. guasayana* (Noireau *et al.*, 1998). Another fine example was the realization of the close relationship between the small *Rhodnius ecuadoriensis* and its 'large cousin' *R. prolixus* from Colombia, which morphological studies of the *Rhodnius* sub-tribe described as unrelated (Chavez *et al.*, 1999; Dujardin *et al.*, 1999a, b). Isozymes are still used, mostly because of their affordability and have recently helped clarify species complexes such as the *Triatoma rubrovaria* and the *Triatoma maculata* complexes, which include several morphologically similar sylvatic vectors distributed throughout Brazil and Northern South-America (dos Santos *et al.*, 2007).

#### Origin of triatomines: monophyly versus polyphyly

Since the late 1990s, DNA sequence data have been used to test phylogenetic relationships between putative taxa, complementing morphological studies based on morphology. Morphological and molecular phylogenies are often used to validate one another and they can generate remarkably similar trees particularly at higher taxonomic levels (Weirauch, 2008; Weirauch and Munro, 2009). However, at lower taxonomic levels, the extensive plasticity of some species can result in morphological convergence or divergence, thus complicating taxonomic assignments (Lent and Wygodzinsky, 1979; Dujardin *et al.*, 1999b). This illustrates the importance of using as many characters as possible for robust taxonomies. A recent cladistic analysis of the assassin bugs (Reduviidae), which includes the Triatominae as well as non-hematophagous families, used as many as 162 morphological characters (Weirauch, 2008). DNA sequences are not immune to convergence (homoplasy) and phylogenetic analyses may depend on the number and types of sequence used, the amount of polymorphic sites they include and a variety of assumption about the rates of mutations (insertions, deletions, transitions, transversions), although these can be estimated independently. Importantly, the possibility of introgression may lead to gene phylogenies that do not reflect the species phylogeny. Future phylogenetic analyses are likely to include whole or nearly whole genomes, and thus provide insights into historical hybridization events.

Perhaps the best illustration of the complexity of phylogenetic interpretations is the long-lasting question of monophyly versus polyphyly of the Triatominae. Morphological studies have been unable to establish if, within the Triatominae, the Rhodniini and the Triatomini tribes evolved from one or more than one bloodsucking ancestor, and whether the *Rhodnius* and *Triatoma* genera are paraphyletic with respect to other genera of the Triatominae. The initial sequence-based studies could also not clearly reject one or the other hypothesis because of lack of statistical power (Hypsa *et al.*, 2002; Schofield and Galvão, 2009). Nonetheless, they illustrated the potential pitfalls of phylogenies based on sequence data and led to a progressive increase in the number of taxa, sequence data and analytical approaches involved.

The latest phylogenetic studies of the Triatominae and other Reduviidae combine several nuclear and mitochondrial DNA (mtDNA) sequences, comprise large numbers of taxa and explore extensive parameter spaces by using parsimony, maximum likelihood and Bayesian analyses (Weirauch and Munro, 2009; Patterson and Gaunt, 2010). The resulting trees recover the Triatominae as a monophyletic taxon with good statistical support, particularly from Bayesian and maximum likelihood inferences (Weirauch and Munro, 2009; Patterson and Gaunt 2010).

Additionally, sequence data have been used to clarify taxonomy at different levels. The phylogeny and taxonomy of the Rhodniini tribe, for example, was derived early on from mitochondrial and nuclear sequences (Monteiro *et al.*, 2000). Ribosomal DNA in combination with haploid genome size comparisons was used to clarify the *Infestans* complex (Bargues *et al.*, 2006). Recent studies based on ribosomal and mitochondrial genes have helped described several putative species and sub-species within the *Dimidiata* complex (Marcilla *et al.*, 2001; Ramirez *et al.*, 2005; Bargues *et al.*, 2006; Dorn *et al.*, 2007, 2009; Tamay-Segovia *et al.*, 2008).

Sequence data have several other important advantages over other markers. First, they document sequence polymorphisms that can be readily used to develop simple high-throughput PCR diagnostics for discriminating putative taxa, thus greatly facilitating the work with recently diverged isomorphic species group (Pavan and Monteiro, 2007; Herrera-Aguilar *et al.*, 2009). Cryptic species are not common in the Triatominae, however they have been detected in *T. dimidiata* (Marcilla *et al.*, 2001; Panzera *et al.*, 2006), *T. sordida* (Noireau *et al.*, 1998; Panzera *et al.*, 2006) and *R. robustus* (Monteiro *et al.*, 2003). Natural hybrids also occur, for example, between *T. infestans* and *Triatoma platensis*, and these appear to remain separated by occupying distinct ecological niches (Abalos, 1948). In the case of *T. dimidiata* and the cryptic species, decreased hybrid fitness (Herrera-Aguilar *et al.*, 2009) may be what is maintaining the >5-million-year separation, as determined using an *ITS-2* molecular clock (Bargues *et al.*, 2008). *R. robustus* was a concern as a possibly epidemiologically important sylvatic species nearly identical in appearance to *R. prolixus* (Monteiro *et al.*, 2003).

Second, when phylogenies are combined with the known age of geological events to build a so-called 'molecular clock', one can match the age of a putative tree branching event with geological events to generate phylogeographic scenarios. These elegant studies (for example, Monteiro *et al.*, 2004; Bargues *et al.*, 2006) further illuminate the ecological and geological context of the Triatominae extensive species

radiation in the New World, and which in turn facilitates our understanding of their systematics.

## POPULATION GENETICS

Population genetics has been an important tool in understanding the epidemiology of Chagas disease and in designing effective control methods to reduce local triatomine populations and interrupt transmission. Such studies have provided estimates of the level of genetic diversity present in populations, which are required to predict vector's adaptability (for example, domestication or development of pesticide resistance). Studies of gene flow among populations can help define the geographic coverage needed for successful control, the importance of sylvan populations in house infestation or the sources of re-infestation following insecticide treatment.

### Genetic diversity

*T. infestans* and *R. prolixus* are two of the most medically important vectors, in large part because they are domestic species across most of their ranges. These two species generally show low genetic diversity in natural populations as well as in laboratory colonies, as determined by allozymes (Harry *et al.*, 1992, 1993; Lopez and Moreno, 1995; Dujardin *et al.*, 1998b; Monteiro *et al.*, 2002) and confirmed by mtDNA and nuclear DNA sequence analyses (Table 1). By contrast, populations of *T. dimidiata* and *T. brasiliensis*, both of which are widespread across domestic, peri-domestic and sylvan habitats, generally show higher diversity, although nearby *T. dimidiata* populations in Costa Rica showed a single *ITS-2* haplotype (Table 1). Survival in these very diverse habitats, and movement among habitats, may have resulted in distinct selective pressures thus maintaining genetic diversity. Reduced genetic repertoire owing to founder effects during domestication could explain the low genetic diversity in *T. infestans* and *R. prolixus* (Schofield *et al.*, 1999). However, domestication *per se* may not be sufficient to reduce genetic diversity as domestic populations showed nearly identical allozyme (Dujardin *et al.*, 1987), or similar or even greater mtDNA diversity (Fitzpatrick *et al.*, 2008; Piccinali *et al.*, 2009) as nearby sylvan populations. Of course sylvan populations may represent feral derivatives of domestic populations (Dujardin *et al.*, 1987). An alternative hypothesis is that low genetic variability reflects rapid and recent expansion owing to passive dispersal (Dujardin *et al.*, 1998a).

A relatively higher genetic diversity in the *T. infestans* populations in the Bolivian Andes was used to propose this region as the origin of dispersal (based on allozymes (Dujardin *et al.*, 1998a) and *cytb*

**Table 1** DNA sequence population diversity of major triatomine species

Region	Species	Marker	No. populations	n	Haplotype diversity $H_d$	References
Mexico and Central America	<i>T. dimidiata</i> <sup>a</sup>	<i>cytb</i>	12	24	0.960	Dorn <i>et al.</i> (2009)
	<i>T. dimidiata</i> ss	<i>cytb</i>	7	58	0.901	Bandon-Naranjo <i>et al.</i> (2010)
	<i>T. dimidiata</i> <sup>a</sup>	<i>ITS-2</i>	93	190	0.918	Bargues <i>et al.</i> (2008); Dorn <i>et al.</i> (2009)
	<i>T. dimidiata</i> ss	<i>ITS-2</i>	7	58	0	Bandon-Naranjo <i>et al.</i> (2010)
South America	<i>T. infestans</i>	<i>cytb</i>	43	98	0.737	Monteiro <i>et al.</i> (1999); Giordano <i>et al.</i> (2005)
	<i>R. prolixus</i>	<i>cytb</i>	34	551	0.518	Fitzpatrick <i>et al.</i> (2008)
	<i>T. brasiliensis</i> ss	<i>cytb</i>	4	361	0.905	Almeida <i>et al.</i> (2008)
	<i>T. brasiliensis</i> <sup>b</sup>	<i>cytb</i>	17	136	0.920	Monteiro <i>et al.</i> (2004)
	<i>T. infestans</i>	<i>ITS-2</i>	31	35	0.591	Bargues <i>et al.</i> (2006)

Abbreviation: ss, *sensu stricto*.

$H_d = n(1 - \sum x_i^2)/(n-1)$ , where  $n$  is the sample size and  $x$  is the frequency of a haplotype (Nei and Tajima, 1981).

<sup>a</sup>May include a cryptic species.

<sup>b</sup>Includes three proposed species: *T. brasiliensis/T. macromelasoma*, *T. juazeiro* and *T. melanica*.

sequence (Giordano *et al.*, 2005)). This hypothesis is supported by cytogenetic differences in the Andean as compared with non-Andean *T. infestans*, DNA sequence differences (*ITS-2* (Bargues *et al.*, 2006) and *cytb* (Monteiro *et al.*, 1999 and Giordano *et al.*, 2005)), as well as a highly significant  $F_{ST}=0.36$  between populations from the two areas (based on *cytb* (Giordano *et al.*, 2005)). Recent studies have shown considerable diversity in the Argentinean *T. infestans* populations as well (*cytochrome oxidase* sequence (Piccinali *et al.*, 2009)). The speculation is that, perhaps multiple waves of immigration and rapid spread in Argentina, followed by genetic drift in isolated populations, has increased the genetic variability.

### Genetic structure of populations

Vector migration is important for genetic mixing, re-infestation following pesticide treatment, the spread of genetically modified symbionts (Beard *et al.*, 2002) and pesticide resistance genes. Although adults generally fly poorly (for example, Barbu *et al.*, 2010), some species have been known to fly as far as 1 km, and wingless nymphs can walk tens of meters (Núñez, 1987). In addition to this active dispersion, passive dispersion by human activity, and perhaps carriage on animals and birds, is important over longer distances.

Over long distances, most studies show variation among populations consistent with the 'isolation by distance' model (Wright, 1943; Calderón *et al.*, 2004; Pérez de Rosas *et al.*, 2007, 2008; Piccinali *et al.*, 2009; Table 2). At shorter distances, the picture differs among species and localities, and is often affected by pesticide treatment history.

*T. infestans* populations are generally highly structured as shown by allozyme analyses (Dujardin *et al.*, 1987, 1998a; Brenière *et al.*, 1998) and microsatellite markers (Table 2), as might be expected for a mostly domestic species. Interestingly, in areas where *T. infestans* has extensive sylvan populations, gene flow was also restricted among these sylvan populations and largely absent between the sylvan and domestic populations (Richer *et al.*, 2007 and Table 2). Recent analysis of genomic (Perez de Rosas *et al.*, 2011) and mtDNA (Torres-Perez *et al.*, 2011) both support the hypothesis of two independent migration events of *T. infestans* in South America, and confirmed the existence of two distinct lineages.

By contrast, *T. dimidiata* populations show more extensive gene flow among houses within a village as well as among nearby villages in areas where it seasonally enters homes (Dumonteil *et al.*, 2007;

Table 2). Surprisingly, in areas apparently lacking sylvan populations, high levels of migration among houses within a village and nearby villages are inferred by high gene flow (Dorn *et al.*, 2003; Stevens *et al.*, unpublished data; Table 2). A finding of mostly unrelated or distantly related individuals within a house by random amplification of polymorphic DNA-PCR (RAPD-PCR) (Melgar *et al.*, 2007) also supports substantial movement by *T. dimidiata*. *R. prolixus* also shows movement between most sylvan and domestic populations, indicating that sylvan populations can pose a risk for human infection (Fitzpatrick *et al.*, 2008; Table 2).

### INTERACTIONS VECTOR-PARASITE-HOST

The genetics and evolution of diseases vectors are influenced by relationships with their parasites (Schaub, 2006), hosts (Sacks and Kamhawi, 2001), symbionts (Dillon and Dillon, 2004) and with congeneric vectors (Pereira *et al.*, 2006). These relationships are two-way interactions as vectors also have impacts on the other members of these 'vector-borne disease communities'. An integrated view of the significance of these interactions on the genetic and evolution of triatomines is largely unknown, but some bits of the puzzle are being pieced together.

#### Triatomine-Trypanosoma interactions

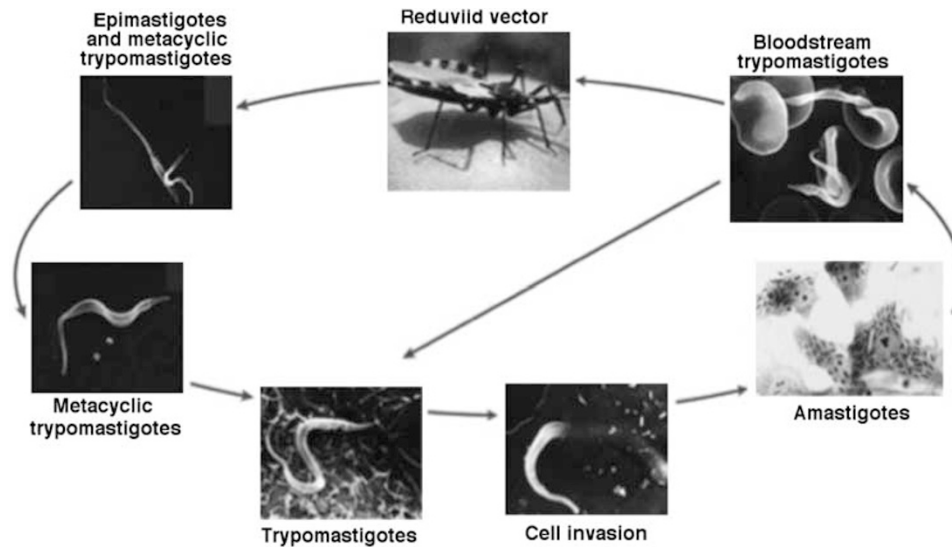
Once ingested during a blood meal, *T. cruzi* parasites undergo two major transformations in the vector. Trypomastigotes differentiate into the epimastigote stage, to multiply asexually, before differentiating into infectious metacyclic trypomastigotes (Figure 2). Parasite viability, development and multiplication are then influenced by physiological and biochemical interactions with the vector, according to its life stage and location inside the vector (see Azambuja *et al.*, 2005b; Garcia *et al.*, 2007, 2009).

Studies of the molecular interactions between triatomines and *T. cruzi* remain scarce as compared with other vector-parasite systems as they lie at the intersection between two neglected fields of research: (i) The immune system of hemipterans, less studied than in higher orders of insects (Ursic-Bedoya and Lowenberger, 2007), and (ii) the role of the innate immunity of insects in flagellate infections, less studied than the response to other microbial organisms (Boulanger *et al.*, 2006). Most studies focus on mechanisms involved in the humoral response (but see Garcia *et al.*, 2004 for insights into the cellular response), their genetic basis and, to a lesser extent, their effects on parasite life history

**Table 2** Microsatellite subdivision among triatomine populations

Species	No. of loci	No. insects per population	Geographic distance	$F_{ST}$	References
<i>Among villages</i>					
<i>T. dimidiata</i> <sup>a</sup>	4	11–34	<280 km	0.0553	Dumonteil <i>et al.</i> (2007)
<i>T. dimidiata</i>	8	28–30	<13 km	0.066	Stevens <i>et al.</i> , unpublished data
<i>T. infestans</i>	10	19–74	<1464 km	$\theta=0.135$	Pérez de Rosas <i>et al.</i> (2007)
<i>T. infestans</i>	10	12–99	<31 km	0.018–0.192	Marcet <i>et al.</i> (2008)
<i>T. infestans</i>	10	18–70	<220 km	0.169	Pérez de Rosas <i>et al.</i> (2008)
<i>T. infestans</i>	10	1–78	<100 km	0.06	Pizarro <i>et al.</i> (2008)
<i>Among ecotopes</i>					
<i>T. dimidiata</i> <sup>a</sup>	4	18–41	Within villages, sylvan/domestic and peri-domestic	0.0096–0.0455	Dumonteil <i>et al.</i> (2007)
<i>R. prolixus</i>	9–10	10–39	Varied, sylvan/domestic	0.001–0.2	Fitzpatrick <i>et al.</i> (2008)
<i>T. infestans</i>	9	6–32	<1.1 km sylvan/sylvan; sylvan/domestic	0.0019–0.110; 0.026–0.072	Richer <i>et al.</i> (2007)

<sup>a</sup>May include a cryptic species.



**Figure 2** *T. cruzi* life cycle. Following a blood meal containing bloodstream trypomastigotes, *T. cruzi* parasites first differentiate into the epimastigote stage and multiply asexually, before differentiating into infectious metacyclic trypomastigotes. Upon entry of trypomastigotes in the mammalian host, those are able to invade cells and further replicate as intracellular amastigotes (from Andrade and Andrews, 2005, with permission).

and within-host dynamics (Table 3). For example, lectins and antimicrobial peptides such as defensins and lysozymes have been described in several triatomine species (Table 3). Many of the corresponding genes are mostly expressed in the stomach (but see Lopez *et al.*, 2003), where symbionts grow intensively after blood meals (Araújo *et al.*, 2006; Balczun *et al.*, 2008). Importantly, defensin is strongly upregulated in the mid-gut of *T. brasiliensis* following infection with *T. cruzi* (Waniek *et al.*, 2011). Lysozyme genes are expressed in both the fat body and the mid-gut of triatomines. Trypanolytic factors, the prophenoloxidase cascade and the impact of various oxides have also been studied, but almost exclusively in the hemocel of *R. prolixus* infected by *Trypanosoma rangeli*.

One of the most intriguing outcomes of triatomines–*Trypanosoma* interactions is that closely related parasites have very different transmission modes. *T. rangeli* spreads from the gut to the hemocoel (Mello *et al.*, 1995) and, at least for some (KP1–) populations, to the salivary gland of *Rhodnius* species, and is transmitted by bites (Guhl and Vallejo, 2003). By contrast, *T. cruzi* infection is limited to the gut, so that it is transmitted through the vector feces. It is still unclear whether such a difference results from (1) an adaptation of *T. cruzi* to limit its spread from the gut and avoid the insect immune response primarily located in the hemocoel (Whitten *et al.*, 2001; Lopez *et al.*, 2003), or (2) an adaptation of *T. rangeli* to reduce the impact of the humoral response of the insect, for example, by infecting hemocytes and inhibiting the proPo pathway that leads to melanization (Gregorio and Ratcliffe, 1991; Gomes *et al.*, 1999; Garcia *et al.*, 2007). Interestingly, whereas the first hypothesis involves a trade-off between an increase in *T. cruzi* growth rate within its vector and a reduced transmission to mammalian hosts, the second hypothesis involves an increase in *T. rangeli* development rate in the hemolymph, with no detrimental impact on transmission.

There is also evidence that, according to variations in their immune response, vectors are likely to be biological filters transmitting differently lineages/genotypes of *T. cruzi* and *T. rangeli* (Vallejo *et al.*, 2009). Lectins produced in the stomach of *R. prolixus* agglutinate Dm28 clones but not the Y-strain of *T. cruzi* (Mello *et al.*, 1996; Ratcliffe *et al.*, 1996). The presence of trypanolytic factors in the *R. prolixus*

hemolymph impedes the development of *T. rangeli* KP1– but not the development of *T. rangeli* KP1+ (Vallejo *et al.*, 2002, 2003).

The above mechanisms and outcomes of vector–parasite interactions can be thought of in terms of co-evolutionary adaptations, especially within the *Rhodnius* genus, where *T. rangeli* is known to be pathogenic to its vector, and where parasite/vector association appear to be more specific (Vallejo *et al.*, 2009). By contrast, a common view is that *T. cruzi* has little impact on its vector's life history (Zeledón, 1981; Schaub, 1989, 2006; Vallejo *et al.*, 2009), and thus produces no or little selective pressure on its vector. Such a view is supported by a lack of change in developmental time (Zeledón, 1981; Schaub, 1988), life span and fertility (Zeledón, 1981; Schaub, 1989), and feeding behavior (Schaub, 2006; Garcia *et al.*, 2007) when triatomines are infected by *T. cruzi* in the laboratory. But there is counter-evidence (Schaub, 1989, 1994; Botto-Mahan *et al.*, 2006; Botto-Mahan, 2009; Nouvellet *et al.*, 2011) and laboratory experiments often suffer biases, thus weakening their applicability to natural populations (Schaub, 1989). Typically, natural conditions involve long periods of starvation potentially leading to competition for rare nutrients between a vector and its parasites (Kollien and Schaub, 2000). In fact, resistance to starvation decreases after *T. cruzi* infection in both *T. dimidiata* (Vargas and Zeledon, 1985) and *T. infestans* (Schaub and Löscher, 1989). Nonetheless, as *T. cruzi* develops in the gut rather than in the hemolymph, it is thought to interfere less with the vector than *T. rangeli* (Lopez *et al.*, 2003; Ursic-Bedoya *et al.*, 2008). However, the mid-gut (and not only the hemocoel) of triatomines has been shown to be immune-reactive, and (artificial) infections of the hemolymph by *T. cruzi* do induce an immune response (Ursic-Bedoya and Lowenberger, 2007). As *T. cruzi* is able to enter the hemocoel (Zeledon, 1987; Mello *et al.*, 1995), ‘mid-gut habitat preference’ observed for *T. cruzi*, could readily be the outcome of a (potentially costly) immune process preventing the invasion of the hemocoel (Whitten *et al.*, 2001). A detailed understanding of the mechanism blocking the transit of *T. cruzi* across the mid-gut is thus critically needed to convincingly evaluate the actual cost of *T. cruzi* infection to the vector.

Overall, although studies of the molecular aspects of the vector immune responses are developing, they still lack quantitative assess-

**Table 3** Components of the humoral response of triatomines

	Location <sup>a</sup>	Effect <sup>b</sup>	Triatoma	Pathogens <sup>c</sup>	References
Lectins	HEM	–	<i>P. megistus</i>	–	Gomes <i>et al.</i> (1988)
	CR	–	<i>T. infestans</i>	–	Grubhoffer <i>et al.</i> (1997)
	–	Agglutination	<i>R. prolixus</i>	<i>T. cruzi</i>	Mello <i>et al.</i> (1996)
	CR	–	<i>R. prolixus</i>	<i>T. cruzi/T. rangeli</i>	Ratcliffe <i>et al.</i> (1996)
	ST+INT+HEM	–	<i>R. prolixus</i>	<i>T. cruzi</i>	Pereira <i>et al.</i> (1981)
	HEM	–	<i>R. prolixus</i>	<i>T. rangeli</i>	Mello <i>et al.</i> (1999)
<i>Antimicrobial peptides</i>					
Defensin	FB (+Int)	No*	<i>R. prolixus</i>	Bacteria	Lopez <i>et al.</i> (2003)
	ST	–	<i>T. brasiliensis</i>	–	Araújo <i>et al.</i> (2006)
	SG	–	<i>T. infestans</i>	–	Assumpção <i>et al.</i> (2008)
	ST	–	<i>T. brasiliensis</i>	–	Waniek <i>et al.</i> (2009)
Lysozymes	(+FB+SI+SG)	–	<i>R. prolixus</i>	<i>T. cruzi/T. rangeli</i>	Mello <i>et al.</i> (1995)
	HEM	–	<i>T. infestans</i>	–	Kollien <i>et al.</i> (2003)
	ST	–	<i>R. prolixus</i>	<i>T. rangeli</i>	Gomes <i>et al.</i> (1999)
	–	–	<i>T. brasiliensis</i>	–	Araujo <i>et al.</i> (2006)
	ST	No*	<i>T. infestans</i>	–	Balczun <i>et al.</i> (2008)
	Sml	–	<i>R. prolixus</i>	<i>T. cruzi</i>	Ursic-Bedoya <i>et al.</i> (2008)
	Mid-gut+FB	–	–	–	–
<i>Trypanolytic factors</i>					
	HEM	–	<i>R. prolixus</i>	<i>T. rangeli</i>	Mello <i>et al.</i> (1995)
	HEM	↓ Develop <sup>†</sup>	<i>R. prolixus</i>	<i>T. rangeli</i> KP1–	Pulido <i>et al.</i> (2008)
	HEM	No effect	<i>R. prolixus</i>	<i>T. rangeli</i> KP1+	Azambuja <i>et al.</i> (2004); Pulido <i>et al.</i> (2008)
Prophenoloxidase cascade (melanization+production of highly reactive and toxic compounds)	HEM	–	<i>R. prolixus</i>	<i>T. rangeli</i>	Mello <i>et al.</i> (1995)
	HEM+FB	–	<i>R. prolixus</i>	<i>T. rangeli</i>	Gomes <i>et al.</i> (1999)
	FB	–	<i>R. prolixus</i>	<i>T. rangeli</i>	Gomes <i>et al.</i> (2003)
	HEM	↓ Survival	<i>R. prolixus</i>	<i>T. rangeli</i>	Garcia <i>et al.</i> (2004)
	Sml+FB	–	<i>R. prolixus</i>	<i>T. cruzi</i>	Ursic-Bedoya and Lowenberger (2007)
Nitric oxide (nitrite and nitrate) and superoxide	HEM	↓ Survival	<i>R. prolixus</i>	<i>T. rangeli</i>	Whitten <i>et al.</i> (2001) (2007)

<sup>a</sup>The humoral response has mostly been studied in the hemocoel (HEM) and in the fat body (FB), where it is known to develop in insects. Components of the humoral response have also been studied in the fore-gut, specifically in its last part, the crop (CR), in the mid-gut (both in its anterior, non-digestive part (the cardia (CA) and stomach (ST)) and in its posterior, digestive part (the small intestine (Sml)).

<sup>b</sup>Most studies do not test the effect of the molecular mechanism on the parasite life history (denoted by '–'), or speculate that the effect should be minor or null ('No\*'). Still, a few experiments have investigated the effects on parasites, which are then specified in the table.

<sup>c</sup>Some studies include an immunological challenge by a *Trypanosoma* or bacteria, and this is then specified in the table; others do not include such challenge (denoted by '–').

ments of their effect on parasite life history. Such measurements are critically needed to further understand the mechanisms as well as the evolution of these interactions; especially, the assessment of the effects of *T. cruzi* under biologically realistic conditions, that is, when infection is considered in synergy with other stress factors such as starvation or co-infection with additional strains. Quantitative assessments would make key contributions to the understanding of the interactions between triatomines and trypanosomes, and ultimately the transmission of Chagas disease.

### Triatomine–*Trypanosoma*–microbiota interactions

Experimental studies indicate that a community of intestinal microorganisms might regulate the development of parasites in the insect mid-gut (and thus vector competence), although the underlying mechanisms remain largely unknown (Azambuja *et al.*, 2005a). Numerous species of bacteria inhabit the gut of triatomines (listed in Vallejo *et al.*, 2009) and they typically undergo massive population size expansion after a blood meal (10<sup>2</sup>- to 10<sup>4</sup>-fold increases; Azambuja *et al.*, 2004), whereas trypanosomes sharply decrease in number

(Azambuja *et al.*, 2005a). The trypanolytic activity of two strains of *Serratia marcescens* (SM365 and RPH) has been shown recently to be associated with its attachment to the membrane of the *T. cruzi* Y-strain (Azambuja *et al.*, 2004). The rapid bacterial expansion could then contribute to decreasing parasite abundance in a direct manner. Indirect effects are also expected as increase of bacterial populations activates the production of lysozyme (Kollien *et al.*, 2003) and defensin (Araújo *et al.*, 2006), which are likely to affect the multiplication of trypanosomes. Furthermore, intestinal microorganisms have significant effects on the vectors. Typically, asymbiotic triatomines suffer important developmental delays, and increased mortality (Eichler and Schaub, 2002; Vallejo *et al.*, 2009). A potential explanation is that triatomine blood meals lack essential vitamins and nutrients, which are supplied by symbionts (Beard *et al.*, 2002). Microorganisms may thus influence the vector–parasite interaction through their relationships with both triatomines and trypanosomes. It has indeed been hypothesized that *R. prolixus* has evolved a lower antimicrobial peptide production in the intestine to allow essential symbionts to develop. This could have induced the evolution of a mid-

gut habitat for *T. cruzi* (Ursic-Bedoya *et al.*, 2008), leading to the relatively inefficient mode of transmission by feces, with key implications for the triatomine–trypanosome interaction.

### Triatomine species interaction

Studies of interaction between triatomines are rare, and focus on the effect of *T. infestans* on other Triatominae. *T. infestans* is thought to have competitively displaced *P. megistus*, *T. sordida*, *T. brasiliensis* and *T. pseudomaculata* from different parts of South America (Figure 1) (Pereira *et al.*, 2006). Such ecological displacement has indeed been observed in laboratory experiments where *T. infestans* consistently excluded *T. sordida* after a few months (Bar *et al.*, 1994; Oscherov *et al.*, 2001, 2004). Indirect field evidence of competition includes observations of higher house infestation and abundance of *T. sordida* (Canale *et al.*, 2000; Oscherov *et al.*, 2004), *P. megistus* (Villela *et al.*, 2005) and *T. brasiliensis* (Pereira *et al.*, 2006) after removal of *T. infestans* by control programs. Intraspecific and interspecific competition for blood meals appears to be the key mechanisms to explain such exclusion. In mixed experimental populations, the *T. sordida* blood-meal size is reduced, leading to lower larval survival rates and reduced population growth, whereas *T. infestans* remains unaffected. Similarly, the competitive advantage of *T. infestans* could result from its ability to ingest larger blood meals, while having a lower requirement to complete its (shorter) life cycle (Pereira *et al.*, 2006). Clearly, interactions between (domestic) *T. infestans* and (peri-domestic and sylvatic) other triatomine species also involve a dispersal-competitive trade-off (Oscherov *et al.*, 2004), and could thus be better understood if studied in a meta-population dynamic framework such as the ones available for triatomines (Gourbière *et al.*, 2008; Barbu *et al.*, 2009, 2010, 2011; Slimi *et al.*, 2009, and references therein). Understanding the balance between competitive and dispersal abilities will allow understanding the impact of competition between triatomines on parasite transmission, as suggested by theoretical studies (Gourbière and Gourbière, 2002; Begon, 2008).

The interaction between triatomines, their symbionts and trypanosomes establishes a community network with many potential positive and negative feedbacks (Figure 3). In this context, the genetics and evolution of triatomines are likely to follow non-trivial dynamics.

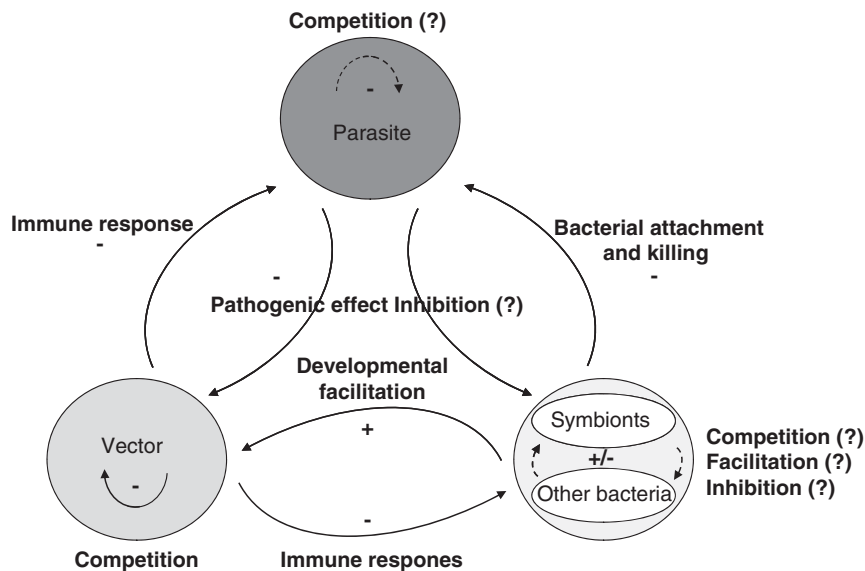
Better knowledge of this complex dynamic will surely be gained by studying the *R. prolixus*–*T. rangeli* and *T. infestans*–*T. cruzi* interactions, two systems with interesting transmission differences, and by looking at the influence of major triatomine life history on pathogen dynamics (Menu *et al.*, 2010). Additionally, studies of other important vectors of *T. cruzi* and Chagas disease will be needed to reach the general level of understanding required to transfer basic knowledge into safe and efficient control strategies.

### VECTOR CONTROL: BEYOND MASSIVE INSECTICIDE SPRAYING

Most studies of triatomines have been motivated by the need for vector control interventions to prevent Chagas disease transmission to humans. The general aims were thus to identify vector species present in human dwellings, to understand the success or failure of indoor insecticide spraying, as well as to design more rational and evidence-based vector control interventions.

Because the medical entomological importance of vectors was traditionally assumed to be associated with the species, efforts have focused on taxonomic identification, for example, resolving the issue of the sylvatic dark morph of *T. infestans* (Noireau *et al.*, 1997) and or evaluating gene flow between sylvatic and domestic *R. robustus* and *R. prolixus* in Venezuela, to show that *R. robustus* and *R. prolixus* are distinct species (with rare introgression), and implicating the sylvatic *R. prolixus* populations as potential contributors to human transmission.

*T. dimidiata* phenotypic variations have also puzzled entomologists for many years, the more so because it was found in a wide variety of habitats, and presented widely different levels of adaptations to human dwellings, ranging from highly domiciliated to preferentially sylvatic (Dorn *et al.*, 2007). The existence of a species complex is now emerging, supported by molecular, morphometric and cytogenetic data (Bustamante *et al.*, 2004; Lehmann *et al.*, 2005; Panzera *et al.*, 2006; Bargues *et al.*, 2008, Dorn *et al.*, 2009), but the association of the different species/subspecies with particular levels of adaptation to the domiciles and vectorial competence is still unclear. For example, two of the distinct *T. dimidiata* cryptic species behave in an identical non-domiciliated manner in the Yucatan peninsula, although one was thought to be much more domiciliated (Dorn *et al.*, 2009; Herrera-



**Figure 3** Interaction network. *Triatoma*, *Trypanosoma* and microorganisms (either symbiotic or not) interact with one another. Direct or indirect interactions, which have been documented in this review, are all included in this figure. The question marks indicate interactions, which have not yet been investigated.



Aguilar *et al.*, 2009). This suggests that domiciliation may rather be associated with ecological environments than with species status, which emphasizes the need for more detailed population genetic studies to identify the relevant vector populations.

Indeed, population genetics has been a key tool to define panmictic populations and dispersal range, and thus explain outcomes of vector control efforts. Control strategies based on indoor insecticide spraying began to be tested in the field in the 1940s, and national programs were initiated in the 1970s in several countries such as Brazil, Argentina, Venezuela and Chile, and culminated with several international initiatives such as the Southern Cone or the Central American initiatives in the 1990s (Schofield and Dias, 1999; Dias *et al.*, 2002).

The success of such interventions, which resulted in a >90% reduction of house infestation by triatomines and a similar reduction in vectorial transmission of *T. cruzi* to humans in most of the southern cone region (Dias *et al.*, 2002; Schofield *et al.*, 2006), relied mostly on the marked genetic structure of *T. infestans* populations and the lack of gene flow among them. However, the elimination of *T. infestans* from houses opened the way for secondary species to start invading this habitat, but again, little is known about triatomine inter-species competition.

As expected, a reduction in the genetic diversity of triatomine populations has been observed following pesticide application, presumably as a result of severe bottlenecks (Garcia *et al.*, 2003). However, some studies have reported an unchanged or even greater genetic diversity after insecticide spraying (Pérez de Rosas *et al.*, 2007, 2008). The authors speculate that the split of a population into several ones, each with different combination of alleles, followed by genetic drift and population expansion could retain the diversity. The effects of anthropogenic changes such as deforestation and global climate change are yet unknown, although the Amazon is becoming a new area for Chagas transmission, coincident with massive deforestation (Diotaiuti, 2009).

In the Gran Chaco region (which encompasses Northern Argentina and parts of Bolivia and Paraguay; Figure 1), vector control measures have notoriously failed. Insects present some months after pesticide treatment are nearly always survivors or migrants from nearby peri-domestic populations as revealed by allozyme, mtDNA and micro-satellite analyses (Dujardin *et al.*, 1996; Garcia *et al.*, 2003; Perez de Rosas *et al.*, 2007; Pizarro *et al.*, 2008). Heterogeneity in peri-domestic environments (from wood piles to granaries to animal corrals) makes control very difficult (Zu Dohna *et al.*, 2007). In addition, pesticide

resistance has now been detected in several of these populations (Gonzalez Audino *et al.*, 2004; Picollo *et al.*, 2005; Toloza *et al.*, 2008; Germano *et al.*, 2010a; Lardeux *et al.*, 2010). The molecular mechanisms of resistance evolved by triatomines may rely on various detoxification pathways (Orihuela *et al.*, 2008). Recent crossing experiments indicate that deltamethrin resistance inheritance is autosomal and semi-dominant, and seems to involve up to three different genes (Cardozo *et al.*, 2010; Germano *et al.*, 2010b). However, more studies are required to further understand the development of insecticide resistance in these species.

When triatomine populations are present in domestic, peri-domestic and sylvatic ecotopes, and gene flow among ecotopes is significant, insecticide spraying is of limited efficacy (Dumonteil *et al.*, 2004; Barbu *et al.*, 2009), likely because populations can be rapidly rebuilt by migrants. Thus, the control of such non-domiciliated or autochthonous triatomines remains a major problem for vector control (Guhl *et al.*, 2009), and novel approaches such as screens, bednets and house improvements will be necessary to interrupt transmission (Figure 4) (Monroy *et al.*, 1998, 2009; Barbu *et al.*, 2009, 2011; Ferral *et al.*, 2010).

Another potential alternative is to manipulate the vector–parasite interaction and modified vector symbionts may allow reducing the parasite transmission rate. For example, *Rhodococcus rhodnii* can be transformed so that it produces peptides of *Lepidoptera* (Beard *et al.*, 1998; Beard *et al.*, 2002) or a mammalian antibody (Durvasula *et al.*, 1999) that strongly reduces the number of *T. cruzi* parasites in the vector. This parasite control strategy has been referred to as parasitogenesis, and may provide new options for Chagas disease control.

Overall, much integration is still needed to take advantage of the genetic and molecular knowledge available to move from the empirical insecticide spraying strategies to the design of more rational and evidence-based control interventions against triatomines. The examples detailed above illustrate how vector control can benefit from genetic studies, and point to gaps in our current understanding of some of these aspects.

## CONCLUDING REMARKS

An increasing number of genetic studies have contributed significantly to our understanding of triatomine biology, from species identification to phylogeny and phylogeography and population genetics. However, a major drawback of many of these studies is that they do not address aspects of the vectorial capacity of the different populations/species (Mas-Coma and Bargues, 2009), making interpretation



**Figure 4** Innovative vector control interventions. Novel interventions, based on detailed knowledge of triatomine species population dynamics and genetics, may rely on improving wall plastering of houses using traditional methods, which prevents colonization (a), or on the installation of insect screens on windows, to prevent transient infestation (b).

of their results in terms of parasite transmission and epidemiological relevance very speculative. Integrative studies including aspects such as *T. cruzi* infection rates, blood meal analysis or vector–parasite interactions with population genetic data are thus critically needed to clearly understand the links between population structure and parasite transmission. Such studies would also allow a better understanding of major processes such as the transition from predatory to hematophagous bugs, the domiciliation of triatomines or the impact of control interventions on vectorial transmission.

Whereas several microsatellite markers have been identified in major triatomine species such as *T. infestans*, *T. dimidiata* or *R. prolixus*, molecular markers are lacking for many other species. Also, genome-wide single-nucleotide polymorphism genotyping approaches, which are now popular in other insect vector species (Megy et al., 2009; Horton et al., 2010; Li et al., 2010), have not yet been developed in triatomines. In that respect, the ongoing sequencing of the *R. prolixus* genome (Megy et al., 2009) will provide a very valuable tool to further understand triatomine biology and genetics. Nonetheless, additional triatomine genomes will be required, particularly from the *Triatoma* genus, and major vector species such as *T. infestans* or *T. dimidiata* would be excellent candidates for future genome sequencing. Triatomine genomes would also open the way to extensive studies of vector–parasite interactions at the molecular level, an area where little is known, in spite of the uniqueness of the mechanism of *T. cruzi* transmission through insect feces. Thus, although triatomine genetics research has lagged somewhat compared with other insect species, these species represent unique models for key biological processes, and we can expect that several novel approaches will be developed in the near future to expand our understanding of *T. cruzi* vectorial transmission, vector–parasite interactions and the development of rational vector control strategies.

## CONFLICT OF INTEREST

The authors declare no conflict of interest.

## ACKNOWLEDGEMENTS

This work has been supported in part by Grant no. 2005-1-13790 from CONACYT-SALUD, by the UNDP/World Bank/WHO Special Program for Research and Training in Tropical Diseases (TDR)/International Development Research Center (IDRC), Project no. A90276, by the National Institutes of Health (USA) Grant 1R15 A1079672-01A1, and by EU-FP7-PEOPLE-Intra-European Fellowship for career development (IEF) grant no. 253483.

Abad-Franch F, Monteiro F (2005). Molecular research and the control of Chagas disease vectors. *An Acad Bras Cienc* **77**: 437–454.

Abalos JW (1948). Sobre híbridos naturales y experimentales de *Triatoma*. *Anales Inst Medicina Regional* **2**: 209–223.

Almeida CE, Pacheco RS, Haag K, Dupas S, Dotson EM, Costa J (2008). Inferring from the Cyt B gene the *Triatoma brasiliensis* Neiva, 1911 (Hemiptera: Reduviidae: Triatominae) genetic structure and domiciliary infestation in the state of Paraíba, Brazil. *Am J Trop Med Hyg* **78**: 791–802.

Almeida CE, Vinhaes MC, Almeida JR, Silveira AC, Costa J (2000). Monitoring the domiciliary and peridomiciliary invasion process of *Triatoma rubrovaria* in the state of Rio Grande do Sul, Brazil. *Mem Inst Oswaldo Cruz* **95**: 761–768.

Andrade LO, Andrews NW (2005). The *Trypanosoma cruzi*–host-cell interplay: location, invasion, retention. *Nat Rev Microbiol* **3**: 819–823.

Araújo CAC, Waniek PJ, Stock P, Mayer C, Jansen AM, Schaub GA (2006). Sequence characterization and expression patterns of defensin and lysozyme encoding genes from the gut of the reduviid bug, *Triatoma brasiliensis*. *Insect Biochem Mol Biol* **36**: 547–560.

Assumpção TC, Francischetti IM, Andersen JF, Schwarz A, Santana JM, Ribeiro JM (2008). An insight into the sialome of the blood-sucking bug *Triatoma infestans*, a vector of Chagas disease. *Insect Biochem Mol Biol* **38**: 213–232.

Azambuja P, Feder D, Garcia ES (2004). Isolation of *Serratia marcescens* in the midgut of *Rhodnius prolixus*: impact on the establishment of the parasite, *Trypanosoma cruzi*, in the vector. *Exp Parasitol* **107**: 89–96.

Azambuja P, Garcia ES, Ratcliffe NA (2005a). Gut microbiota and parasite transmission by insect vectors. *Trends Parasitol* **21**: 568–572.

Azambuja P, Ratcliffe NA, Garcia ES (2005b). Towards an understanding of the interactions of *Trypanosoma cruzi* and *Trypanosoma rangeli* within the reduviid insect host *Rhodnius prolixus*. *An Acad Bras Cienc* **77**: 397–404.

Balczun C, Knorr E, Topal H, Meiser CK, Kollien AH, Schaub GA (2008). Sequence characterization of an unusual lysozyme gene expressed in the intestinal tract of the reduviid bug *Triatoma infestans* (Insecta). *Parasitol Res* **102**: 229–232.

Bar ME, Oscherov EB, Damborsky MP, Porcel EA, Alvarez BM (1994). Population interactions between *Triatoma infestans* and *Triatoma sordida*. *Rev Saude Publica* **28**: 59–68.

Barbu C, Dumonteil E, Gourbière S (2009). Optimization of control strategies for non-domiciliated *Triatoma dimidiata*, Chagas disease vector in the Yucatán peninsula, Mexico. *PLoS Negl Trop Dis* **3**: e416.

Barbu C, Dumonteil E, Gourbière S (2010). Characterization of the dispersal of non-domiciliated *Triatoma dimidiata* through the selection of spatially explicit models. *PLoS Negl Trop Dis* **4**: e777.

Barbu C, Dumonteil E, Gourbière S (2011). Optimization of spatially targeted vector control interventions for non-domiciliated triatomines. *PLoS Negl Trop Dis* **5**: e1045.

Bargues MD, Klisiowicz DR, Gonzalez-Candelas F, Ramsey J, Monroy C, Ponce C et al. (2008). Phylogeography and genetic variations of *Triatoma dimidiata*, the main Chagas disease vector in Central America, and its position within the genus *Triatoma*. *PLoS Negl Trop Dis* **2**: e233.

Bargues MD, Klisiowicz DR, Panzera F, Noireau F, Marcilla A, Perez R et al. (2006). Origin and phylogeography of the Chagas disease main vector *Triatoma infestans* based on nuclear rDNA sequences and genome size. *Infect Genet Evol* **6**: 46–62.

Beard CB (2005). Kissing bugs and bedbugs, the heteroptera. In: Marquardt WC (ed). *Biology of Disease Vector*. Elsevier Academic Press: Amsterdam. pp 57–65.

Beard CB, Cordon-Rosales C, Durvasula RV (2002). Bacterial symbionts of the triatominae and their potential use in control of Chagas disease transmission. *Annu Rev Entomol* **47**: 123–141.

Beard CB, Durvasula RV, Richards FF (1998). Bacterial symbiosis in arthropods and the control of disease transmission. *Emerg Infect Dis* **4**: 581–591.

Begon M (2008). Effects of host diversity on disease dynamics. In: Ostfeld RS, Keasing F, Eviner VT (eds). *Infectious Disease Ecology—The Effects of Ecosystems on Disease and of Disease on Ecosystems*. Princeton University Press: Princeton, United Kingdom. pp 12–29.

Blandon-Naranjo M, Zuriaga MA, Azofeifa G, Zeledon R, Bargues MD (2010). Molecular evidence of intraspecific variability in different habitat-related populations of *Triatoma dimidiata* (Hemiptera: Reduviidae) from Costa Rica. *Parasitol Res* **106**: 895–905.

Botto-Mahan C (2009). *Trypanosoma cruzi* induces life-history trait changes in the wild kissing bug *Mepraia spinolai*: implications for parasite transmission. *Vector Borne Zoonotic Dis* **9**: 505–510.

Botto-Mahan C, Cattán PE, Medel R (2006). Chagas disease parasite induces behavioural changes in the kissing bug *Mepraia spinolai*. *Acta Trop* **98**: 219–223.

Boulanger N, Bulet P, Lowenberger C (2006). Antimicrobial peptides in the interaction between insects and flagellate parasites. *Trends Parasitol* **22**: 262–268.

Breniere SF, Bosseno MF, Vargas F, Yaksic N, Noireau F, Noel S et al. (1998). Smallness of the panmictic unit of *Triatoma infestans* (Hemiptera: Reduviidae). *J Med Entomol* **35**: 911–917.

Bustamante DM, Monroy C, Menes M, Rodas A, Salazar-Schettino PM, Rojas G et al. (2004). Metric variation among geographic populations of the Chagas vector *Triatoma dimidiata* (Hemiptera: Reduviidae: Triatominae) and related species. *J Med Entomol* **41**: 296–301.

Calderón C, Dorn P, Melgar S, Chávez J, Rodas A, Rosales R et al. (2004). A preliminary assessment of genetic differentiation of *Triatoma dimidiata* (Hemiptera: Reduviidae) in Guatemala by RAPD-PCR. *J Med Entomol* **41**: 882–887.

Canale DM, Cecere MC, Chuit R, Gürtler RE (2000). Peridomestic distribution of *Triatoma garciabesi* and *Triatoma guasayana* in north-west Argentina. *Med Vet Entomol* **14**: 383–390.

Carbajal de la Fuente AL, Jaramillo N, Barata JM, Noireau F, Diotaiuti L (2011). Misidentification of two Brazilian triatomines, *Triatoma arthurneivai* and *Triatoma wygodzinskyi*, revealed by geometric morphometrics. *Med Vet Entomol* **178**–183.

Cardozo RM, Panzera F, Gentile AG, Segura MA, Perez R, Diaz RA et al. (2010). Inheritance of resistance to pyrethroids in *Triatoma infestans*, the main Chagas disease vector in South America. *Infect Genet Evol* **10**: 1174–1178.

Catala S, Sachetto C, Rosales R, Salazar-Schettino PM, Gorla D (2005). Antennal phenotype of *Triatoma dimidiata* populations and its relationship with species of phyllosoma and protracta complexes. *J Med Entomol* **42**: 719–725.

Chavez T, Moreno J, Dujardin JP (1999). Isoenzyme electrophoresis of *Rhodnius* species: a phenetic approach to relationships within the genus. *Ann Trop Med Parasitol* **93**: 299–307.

Corrêa RR, Espínola H (1964). Descrição de *Triatoma maculata*, nova espécie de triatomíneo de Sobral, Ceará (Hemiptera, Reduviidae). *Arq Hig Saúde Públ* **29**: 115–127.

Dias JC, Silveira AC, Schofield CJ (2002). The impact of Chagas disease control in Latin America: a review. *Mem Inst Oswaldo Cruz* **97**: 603–612.

Dillon RJ, Dillon VM (2004). The gut bacteria of insects: nonpathogenic interactions. *Annu Rev Entomol* **49**: 71–92.

- Diotiauti L (2009). Chapter 4: triatomines vectors of *Trypanosoma cruzi* infections. In: Teixeira AR, Vinaud M, Castro AM (eds). *Emerging Chagas Disease*. Bentham Science Publishers Ltd.: Sharjah, UAE, pp 24–39.
- Dorn PL, Calderon C, Melgar S, Moguel B, Solorzano E, Dumonteil E *et al.* (2009). Two distinct *Triatoma dimidiata* (Latreille, 1811) taxa are found in sympatry in Guatemala and Mexico. *PLoS Negl Trop Dis* **3**: e393.
- Dorn PL, Melgar S, Rouzier V, Gutierrez A, Combe C., Rosales R. *et al.* (2003). The Chagas vector, *Triatoma dimidiata* (Hemiptera: Reduviidae), is panmictic within and among adjacent villages in Guatemala. *J Med Entomol* **40**: 436–440.
- Dorn PL, Monroy C, Curtis A (2007). *Triatoma dimidiata* (Latreille, 1811): a review of its diversity across its geographic range and the relationship among populations. *Infect Genet Evol* **7**: 343–352.
- dos Santos CM, Jurberg J, Galvão C, da Rosa JA, Júnior WC, Barata JMS *et al.* (2009). Comparative descriptions of eggs from three species of *Rhodnius* (Hemiptera: Reduviidae: Triatominae). *Mem Inst Oswaldo Cruz* **104**: 1012–1018.
- dos Santos CM, Jurberg J, Galvão C, Rocha Dda, Fernandez JI (2003). Morphometric study of the genus *Panstrongylus* Berg, 1879 (Hemiptera, Reduviidae, Triatominae). *Mem Inst Oswaldo Cruz* **98**: 939–944.
- dos Santos SM, Lopes CM, Dujardin JP, Panzera F, Pérez R, Carbajal de la Fuente AL *et al.* (2007). Evolutionary relationships based on genetic and phenetic characters between *Triatoma maculata*, *Triatoma pseudomaculata* and morphologically related species (Reduviidae: Triatominae). *Infect Genet Evol* **7**: 469–475.
- Dujardin JP, Cardozo L, Schofield C (1996). Genetic analysis of *Triatoma infestans* following insecticidal control interventions in central Bolivia. *Acta Trop* **61**: 263–266.
- Dujardin JP, Chavez T, Moreno JM, Machane M, Noireau F, Schofield CJ (1999a). Comparison of isoenzyme electrophoresis and morphometric analysis for phylogenetic reconstruction of the *Rhodniini* (Hemiptera: Reduviidae: Triatominae). *J Med Entomol* **36**: 653–659.
- Dujardin JP, Munoz M, Chavez T, Ponce C, Moreno J, Schofield CH *et al.* (1998b). The origin of *Rhodnius prolixus* in Central America. *Med Vet Entomol* **12**: 113–115.
- Dujardin JP, Panzera P, Schofield CJ (1999b). Triatominae as a model of morphological plasticity under ecological pressure. *Mem Inst Oswaldo Cruz* **94**(Suppl 1): 223–228.
- Dujardin JP, Schofield CJ, Tibayrenc M (1998a). Population structure of Andean *Triatoma infestans*: allozyme frequencies and their epidemiological relevance. *Med Vet Entomol* **12**: 20–29.
- Dujardin JP, Tibayrenc M, Venegas E, Maldonado L, Desjeux P, Ayala FJ (1987). Isozyme evidence of lack of speciation between wild and domestic *Triatoma infestans* (Hemiptera: Reduviidae) in Bolivia. *J Med Entomol* **24**: 40–45.
- Dumonteil E, Ruiz-Pina H, Rodriguez-Felix E, Barrera-Perez M, Ramirez-Sierra MJ, Rabinovich JE *et al.* (2004). Re-infestation of houses by *Triatoma dimidiata* after intra-domicile insecticide application in the Yucatan peninsula, Mexico. *Mem Inst Oswaldo Cruz* **99**: 253–256.
- Dumonteil E, Tripet F, Ramirez-Sierra MJ, Payet V, Lanzaro G, Menu F (2007). Assessment of *Triatoma dimidiata* dispersal in the Yucatan Peninsula of Mexico by morphometry and microsatellite markers. *Am J Trop Med Hyg* **76**: 930–937.
- Durvasula RV, Gumbs A, Panaackal A, Kruglov O, Taneja J, Kang AS *et al.* (1999). Expression of a functional antibody fragment in the gut of *Rhodnius prolixus* via transgenic bacterial symbiont *Rhodococcus rhodnii*. *Med Vet Entomol* **13**: 115–119.
- Eichler S, Schaub GA (2002). Development of symbionts in triatomine bugs and the effects of infections with trypanosomatids. *Exp Parasitol* **100**: 17–27.
- Ferral J, Chavez-Nuñez L, Euan-García M, Ramirez-Sierra MJ, Najera-Vasquez MR, Dumonteil E (2010). Comparative field trial of alternative vector control strategies for non-domiciliated *Triatoma dimidiata* in the Yucatan peninsula, Mexico. *Am J Trop Med Hyg* **82**: 60–66.
- Fitzpatrick S, Feliciangeli MD, Sanchez-Martin MJ, Monteiro FA, Miles MA (2008). Molecular genetics reveal that sylvatic *Rhodnius prolixus* do colonise rural houses. *PLoS Negl Trop Dis* **2**: e210.
- Franca M (1985) In: Carcavallo RV, Tonn RJ (eds). *Vectors in Uruguay. Factores Biológicos y Ecológicos en la Enfermedad de Chagas*. Ministerio de Salud, Buenos Aires. pp 457–463.
- Galíndez-Giron I, Barazarte R, Márquez J, Oviedo M, Márquez Y, Morón L *et al.* (1994). Relaciones reproductivas entre *Rhodnius prolixus* Stal y *Rhodnius robustus* Larrousse (Hemiptera, Reduviidae, Triatominae) bajo condiciones de laboratorio. *Entomol Vect 1*: 3–13.
- García ES, Castro DP, Figueiredo MB, Genta FA, Azambuja P (2009). *Trypanosoma rangeli*: a new perspective for studying the modulation of immune reactions of *Rhodnius prolixus*. *Parasit Vect* **2**: 33.
- García ES, Machado EM, Azambuja P (2004). Effects of eicosanoid biosynthesis inhibitors on the prophenoloxidase-activating system and microaggregation reactions in the hemolymph of *Rhodnius prolixus* infected with *Trypanosoma rangeli*. *J. Insect Physiol* **50**: 157–165.
- García BA, Manfredi C, Fichera L, Segura EL (2003). Short report: variation in mitochondrial 12S and 16S ribosomal DNA sequences in natural populations of *Triatoma infestans* (Hemiptera: Reduviidae). *Am J Trop Med Hyg* **68**: 692–694.
- García ES, Ratcliffe NA, Whitten MM, Gonzalez MS, Azambuja P (2007). Exploring the role of insect host factors in the dynamics of *Trypanosoma cruzi*-*Rhodnius prolixus* interactions. *J Insect Physiol* **53**: 11–21.
- Germano MD, Roca Acevedo G, Mougabure Cueto GA, Toloza AC, Vassena CV, Picollo MI (2010a). New findings of insecticide resistance in *Triatoma infestans* (Hemiptera: Reduviidae) from the Gran Chaco. *J Med Entomol* **47**: 1077–1081.
- Germano MD, Vassena CV, Picollo MI (2010b). Autosomal inheritance of deltamethrin resistance in field populations of *Triatoma infestans* (Hemiptera: Reduviidae) from Argentina. *Pest Manag Sci* **66**: 705–708.
- Giordano R, Cortez JC, Paulk S, Stevens L (2005). Genetic diversity of *Triatoma infestans* (Hemiptera: Reduviidae) in Chuquisaca, Bolivia based on the mitochondrial cytochrome b gene. *Mem Inst Oswaldo Cruz* **100**: 753–760.
- Gomes SA, Feder D, García ES, Azambuja P (2003). Suppression of the prophenoloxidase system in *Rhodnius prolixus* orally infected with *Trypanosoma rangeli*. *J Insect Physiol* **49**: 829–837.
- Gomes SA, Feder D, Thomas NE, García ES, Azambuja P (1999). *Rhodnius prolixus* infected with *Trypanosoma rangeli*: *in vivo* and *in vitro* experiments. *J Invertebr Pathol* **73**: 289–293.
- Gomes YM, Furtado AF, De Carvalho AB (1988). Natural lectin activity in the haemolymph of *Panstrongylus megistus* (Hemiptera: Reduviidae). *Mem Inst Oswaldo Cruz* **83**: 509–512.
- Gourbière S, Dumonteil E, Rabinovich JE, Minkoué R, Menu F (2008). Demographic and dispersal constraints for domestic infestation by non-domiciliated Chagas disease vectors in the Yucatan peninsula, Mexico. *Am J Trop Med Hyg* **78**: 133–139.
- Gourbière S, Gourbière F (2002). Competition between unit-restricted fungi: a metapopulation model. *J Theor Biol* **217**: 351–368.
- Gonzalez Audino P, Vassena C, Barrios S, Zerba E, Picollo MI (2004). Role of enhanced detoxication in a deltamethrin-resistant population of *Triatoma infestans* (Hemiptera, Reduviidae) from Argentina. *Mem Inst Oswaldo Cruz* **99**: 335–339.
- Gregorio EA, Ratcliffe NA (1991). The phenoloxidase system and *in vitro* interaction of *Trypanosoma rangeli* with *Rhodnius prolixus* and *Triatoma infestans*. *Parasite Immunol* **13**: 551–564.
- Grubhoffer L, Hypsa V, Volf P (1997). Lectins (hemagglutinins) in the gut of the important disease vectors. *Parasite* **4**: 203–216.
- Guhl F, Pinto N, Aguilera G (2009). Sylvatic triatominae: a new challenge in vector control transmission. *Mem Inst Oswaldo Cruz* **104**(Suppl 1): 71–75.
- Guhl F, Vallejo GA (2003). *Trypanosoma* (Herpetosoma) *rangeli* Tejera, 1920: an updated review. *Mem Inst Oswaldo Cruz* **98**: 435–442.
- Gurgel-Goncalves R, Ferreira JB, Rosa AF, Bar ME, Galvão C (2010). Geometric morphometrics and ecological niche modelling for delimitation of near-sibling triatomine species. *Med Vet Entomol* **25**: 84–93.
- Gurtler RE, Diotiauti L, Kitron U (2008). Commentary: Chagas disease: 100 years since discovery and lessons for the future. *Int J Epidemiol* **37**: 698–701.
- Harry M, Galíndez I, Cariou ML (1992). Isozyme variability and differentiation between *Rhodnius prolixus*, *R. robustus* and *R. pictipes*, vectors of Chagas disease in Venezuela. *Med Vet Entomol* **6**: 37–43.
- Harry M, Moreno G, Goyffon M (1993). Isozyme variability in *Rhodnius prolixus* populations, vectors of Chagas disease in Venezuela. *Evolución Biológica* **6**: 175–194.
- Herrera-Aguilar M, Be-Barragán LA, Ramirez-Sierra MJ, Tripet F, Dorn P, Dumonteil E (2009). Identification of a large hybrid zone between sympatric sibling species of *Triatoma dimidiata* in the Yucatan peninsula, Mexico, and its epidemiological importance. *Infect Genet Evol* **9**: 1345–1351.
- Horton AA, Lee Y, Coulibaly CA, Rashbrook VK, Cornel AJ, Lanzaro GC *et al.* (2010). Identification of three single nucleotide polymorphisms in *Anopheles gambiae* immune signaling genes that are associated with natural *Plasmodium falciparum* infection. *Malar J* **9**: 160.
- Hypsa V, Tietz DF, Zrzav J, Rego RO, Galvão C, Jurberg J (2002). Phylogeny and biogeography of Triatominae (Hemiptera: Reduviidae): molecular evidence of a New World origin of the Asiatic clade. *Mol Phylogenet Evol* **23**: 447–457.
- Jackson Y, Myers C, Diana A, Marti HP, Wolff H, Chappuis F *et al.* (2009). Congenital transmission of Chagas disease in Latin American immigrants in Switzerland. *Emerg Infect Dis* **15**: 601–603.
- Kollien AH, Fechner S, Waniek PJ, Schaub GA (2003). Isolation and characterization of a cDNA encoding for a lysozyme from the gut of the reduviid bug *Triatoma infestans*. *Arch Insect Biochem Physiol* **53**: 134–145.
- Kollien AH, Schaub GA (2000). The development of *Trypanosoma cruzi* in Triatominae. *Parasitol Today* **16**: 381–387.
- Lardeux F, Depickere S, Duchon S, Chavez T (2010). Insecticide resistance of *Triatoma infestans* (Hemiptera, Reduviidae) vector of Chagas disease in Bolivia. *Trop Med Int Health* **15**: 1037–1048.
- Lehmann P, Ordóñez R, Ojeda-Baranda R, de Lira JM, Hidalgo-Sosa L, Monroy C *et al.* (2005). Morphometric analysis of *Triatoma dimidiata* populations (Reduviidae: Triatominae) from Mexico and Northern Guatemala. *Mem Inst Oswaldo Cruz* **100**: 477–482.
- Lent H, Wygodzinsky P (1979). Revision of the Triatominae (Hemiptera, Reduviidae), and their significance as vectors of Chagas' disease. *Bull Am Mus Nat Hist* **163**: 123–520.
- Li J, Ribeiro JM, Yan G (2010). Allelic gene structure variations in *Anopheles gambiae* mosquitoes. *PLoS One* **5**: e10699.
- Lopez L, Morales G, Ursic R, Wolff M, Lowenberger C (2003). Isolation and characterization of a novel insect defensin from *Rhodnius prolixus*, a vector of Chagas disease. *Insect Biochem Mol Biol* **33**: 439–447.
- Lopez G, Moreno J (1995). Genetic variability and differentiation between populations of *Rhodnius prolixus* and *R. pallidus*, vectors of Chagas' disease in Colombia. *Mem Inst Oswaldo Cruz* **90**: 353–357.
- Marcet PL, Mora MS, Cutrera AP, Jones L, Gurtler RE, Kitron U *et al.* (2008). Genetic structure of *Triatoma infestans* populations in rural communities of Santiago del Estero, northern Argentina. *Infect Genet Evol* **8**: 835–846.
- Marcilla A, Bargues MD, Ramsey JM, Magallon-Gastelum E, Salazar-Schettino PM, Abad-JFranch F *et al.* (2001). The ITS-2 of the nuclear rDNA as a molecular marker for populations, species, and phylogenetic relationships in Triatominae (Hemiptera: Reduviidae), vectors of Chagas disease. *Mol Phylogenet Evol* **18**: 136–142.
- Martinez-Hernandez F, Martinez-Ibarra JA, Catala S, Villalobos G, de la Torre P, Lacleite JP *et al.* (2010). Natural crossbreeding between sympatric species of the *Phyllosoma*

- complex (Insecta: Hemiptera: Reduviidae) indicate the existence of only one species with morphologic and genetic variations. *Am J Trop Med Hyg* **82**: 74–82.
- Martinez-Ibarra JA, Salazar-Schettino PM, Nogueira-Torres B, Vences MO, Tapia-Gonzales JM et al. (2009). Occurrence of hybrids and laboratory evidence of fertility among three species of the *Phyllsoma* complex (Hemiptera: Reduviidae) in Mexico. *Mem Inst Oswaldo Cruz* **104**: 1125–1131.
- Mas-Coma S, Bargues MD (2009). Populations, hybrids and the systematic concepts of species and subspecies in Chagas disease triatomine vectors inferred from nuclear ribosomal and mitochondrial DNA. *Acta Trop* **110**: 112–136.
- Megy K, Hammond M, Lawson D, Bruggner RV, Birney E, Collins FH (2009). Genomic resources for invertebrate vectors of human pathogens, and the role of VectorBase. *Infect Genet Evol* **9**: 308–313.
- Melgar S, Chavez JJ, Landaverde P, Herrera F, Rodas A, Enriquez E et al. (2007). The number of families of *Triatoma dimidiata* in a Guatemalan house. *Mem Inst Oswaldo Cruz* **102**: 221–223.
- Mello CB, Azambuja P, Garcia ES, Ratcliffe NA (1996). Differential *in vitro* and *in vivo* behaviour of three strains of *Trypanosoma cruzi* in the gut and hemolymph of *Rhodnius prolixus*. *Exp Parasitol* **82**: 112–121.
- Mello CB, Garcia ES, Ratcliffe NA, Azambuja P (1995). *Trypanosoma cruzi* and *Trypanosoma rangeli*: interplay with hemolymph components of *Rhodnius prolixus*. *J Invertebr Pathol* **65**: 261–268.
- Mello CB, Nigam Y, Garcia ES, Azambuja P, Newton RP, Ratcliffe NA (1999). Studies of a hemolymph lectin isolated from *Rhodnius prolixus* and its interaction with *Trypanosoma rangeli*. *Exp Parasitol* **91**: 289–296.
- Menu F, Ginoux M, Rajon E, Lazzari CR, Rabinovich JE (2010). Adaptive developmental delay in Chagas disease vectors: an evolutionary ecology approach. *PLoS Negl Trop Dis* **4**: e691.
- Monroy C, Bustamante DM, Pineda S, Rodas A, Castro X, Ayala V et al. (2009). House improvements and community participation in the control of *Triatoma dimidiata* re-infestation in Jutiapa, Guatemala. *Cad Saude Publica* **25**(Suppl 1): S168–S178.
- Monroy C, Rodas A, Mejía M, Tabaru Y (1998). Wall plastering and paints as methods to control vector of Chagas disease in Guatemala. *Med Entomol Zool* **49**: 187–193.
- Monteiro FA, Barrett TV, Fitzpatrick S, Cordon-Rosales C, Feliciangeli D, Beard CB (2003). Molecular phylogeography of the Amazonian Chagas disease vectors *Rhodnius prolixus* and *R. robustus*. *Mol Ecol* **12**: 997–1006.
- Monteiro FA, Donnelly MJ, Beard CB, Costa J (2004). Nested clade and phylogeographic analyses of the Chagas disease vector *Triatoma brasiliensis* in Northeast Brazil. *Mol Phylogenet Evol* **32**: 46–56.
- Monteiro FA, Lazoski C, Noireau F, Solé-Cava AM (2002). Allozyme relationships among ten species of Rhodniini, showing paraphyly of *Rhodnius* including *Psammolestes*. *Med Vet Entomol* **16**: 83–90.
- Monteiro F, Marcet P, Dorn P (2010). Population genetics of triatomines. In: Telleria J, Tibayrenc M (eds). *American Trypanosomiasis Chagas Disease, One Hundred Years of Research*. Elsevier: Amsterdam. pp 169–208.
- Monteiro FA, Perez R, Panzera F, Dujardin JP, Galvao C, Rocha D et al. (1999). Mitochondrial DNA variation of *Triatoma infestans* populations and its implication on the specific status of *T. melanosoma*. *Mem Inst Oswaldo Cruz* **94**(Suppl 1): 229–238.
- Monteiro FA, Wesson DM, Dotson EM, Schofield CJ, Beard CB, Monteiro FA (2000). Phylogeny and molecular taxonomy of the Rhodniini derived from mitochondrial and nuclear DNA sequences. *Am J Trop Med Hyg* **62**: 460–465.
- Nei M, Tajima F (1981). Genetic drift and estimation of effective population size. *Genetics* **98**: 625–640.
- Noireau F, Flores R, Gutierrez T, Dujardin JP (1997). Detection of sylvatic dark morphs of *Triatoma infestans* in the Bolivian Chaco. *Mem Inst Oswaldo Cruz* **92**: 583–584.
- Noireau F, Gutierrez T, Zegarra M, Flores R, Breniere F, Cardozo L et al. (1998). Cryptic speciation in *Triatoma sordida* (Hemiptera: Reduviidae) from the Bolivian Chaco. *Trop Med Int Health* **3**: 364–372.
- Nouvellet P, Ramirez-Sierra MJ, Dumonteil E, Gourbière S (2011). Effects of genetic factors and infection status on wing morphology of *Triatoma dimidiata* species complex. *Infect Genet Evol* **11**: 1243–1249.
- Núñez JA (1987). Behavior of Triatominae bugs. In: Brenner R, Stoka A (eds). *Chagas' Disease Vectors*. CRC Press: Boca Raton, FL. pp 1–27.
- Obara MT, da Rosa JA, Ceretti Jr W, Urbinatti PR, Quintero LO, Barata JM et al. (2007). A study of the scutellum in eight Chagas disease vector species from genus *Triatoma* (Hemiptera, Reduviidae) using optical and scanning electron microscopy. *Mem Inst Oswaldo Cruz* **102**: 463–468.
- Orihuela PL, Vassena CV, Zerba EN, Picollo MI (2008). Relative contribution of mono-oxygenase and esterase to pyrethroid resistance in *Triatoma infestans* (Hemiptera: Reduviidae) from Argentina and Bolivia. *J Med Entomol* **45**: 298–306.
- Oscherov EB, Damborsky MP, Bar ME, Avalos G, Alvarez BM, Presman H et al. (2001). Interactions between *Triatoma infestans* and *Triatoma sordida* (Hemiptera: Reduviidae) in artificial ecotopes: population growth and age structure. *J Med Entomol* **38**: 214–217.
- Oscherov EB, Damborsky MP, Bar ME, Gorla DE (2004). Competition between vectors of Chagas disease, *Triatoma infestans* and *T. sordida*: effects on fecundity and mortality. *Med Vet Entomol* **18**: 323–328.
- Panzera F, Alvarez F, Sánchez-Rufas J, Pérez R, Suja JA, Scvortzoff E et al. (1992). C-heterochromatin polymorphism in holocentric chromosomes of *Triatoma infestans* (Hemiptera, Reduviidae). *Genome* **35**: 1068–1074.
- Panzera F, Hornos S, Pereira J, Cestau R, Canale D, Diotaiuti L et al. (1997). Genetic variability and geographic differentiation among three species of triatomine bugs (Hemiptera–Reduviidae). *Am J Trop Med Hyg* **57**: 732–739.
- Panzera F, Dujardin JP, Nicolini P, Caraccio MN, Rose V, Tellez T et al. (2004). Genomic changes of Chagas disease vector, South America. *Emerg Infect Dis* **10**: 438–446.
- Panzera F, Ferrandis I, Ramsey J, Ordóñez R, Salazar-Schettino PM, Cabrera M et al. (2006). Chromosomal variation and genome size support existence of cryptic species of *Triatoma dimidiata* with different epidemiological importance as Chagas disease vectors. *Trop Med Int Health* **11**: 1092–1103.
- Panzera F, Perez R, Panzera Y, Ferrandis I, Ferreiro MJ, Calleros L (2010). Cytogenetics and genome evolution in the subfamily Triatominae (Hemiptera, Reduviidae). *Cytogenet Genome Res* **128**: 77–87.
- Patterson JS, Gaunt MW (2010). Phylogenetic multi-locus codon models and molecular clocks reveal the monophyly of haematophagous reduviid bugs and their evolution at the formation of South America. *Mol Phylogenet Evol* **56**: 608–621.
- Pavan MG, Monteiro FA (2007). A multiplex PCR assay that separates *Rhodnius prolixus* from members of the *Rhodnius robustus* cryptic species complex (Hemiptera: Reduviidae). *Trop Med Int Health* **12**: 751–758.
- Payne F (1909). Some new types of chromosome distribution and their relation to sex. *Biol Bull* **16**: 119–166.
- Pereira MEA, Andrade AFB, Ribeiro JMC (1981). Lectins of distinct specificity in *Rhodnius prolixus* interact selectively with *Trypanosoma cruzi*. *Science* **211**: 597–600.
- Pereira MH, Gontijo NF, Guarneri AA, Santana MR, Diotaiuti L (2006). Competitive displacement in Triatominae: the *Triatoma infestans* success. *Trends Parasitol* **22**: 516–520.
- Perez R, Panzera Y, Scafiezso S, Mazzella MC, Panzera F, Dujardin JP et al. (1992). Cytogenetics as a tool for triatomine species distinction (Hemiptera–Reduviidae). *Mem Inst Oswaldo Cruz* **87**: 353–361.
- Perez R, Hernandez M, Quintero O, Scvortzoff E., Canale D, Mendez L et al. (2005). Cytogenetic analysis of experimental hybrids in species of Triatominae (Hemiptera–Reduviidae). *Genetica* **125**: 261–270.
- Perez de Rosas AR, Segura EL, Fichera L, Garcia BA (2008). Macrogeographic and microgeographic genetic structure of the Chagas' disease vector *Triatoma infestans* (Hemiptera: Reduviidae) from Catamarca, Argentina. *Genetica* **133**: 247–260.
- Perez de Rosas AR, Segura EL, Garcia BA (2007). Microsatellite analysis of genetic structure in natural *Triatoma infestans* (Hemiptera: Reduviidae) populations from Argentina: its implication in assessing the effectiveness of Chagas' disease vector control programmes. *Mol Ecol* **16**: 1401–1412.
- Perez de Rosas AR, Segura EL, Garcia BA (2011). Molecular phylogeography of the Chagas' disease vector *Triatoma infestans* in Argentina. *Heredity* **107**: 71–79.
- Piccinalli RV, Marcet PL, Noireau F, Kitron U, Gürtler RE, Dotson EM (2009). Molecular population genetics and phylogeography of the Chagas disease vector *Triatoma infestans* in South America. *J Med Entomol* **46**: 796–809.
- Piccolo MI, Vassena C, Santo Orihuela P, Barrios S, Zaidenberg M, Zerba E (2005). High resistance to pyrethroid insecticides associated with ineffective field treatments in *Triatoma infestans* (Hemiptera: Reduviidae) from Northern Argentina. *J Med Entomol* **42**: 637–642.
- Pizarro JC, Gilligan LM, Stevens L (2008). Microsatellites reveal a high population structure in *Triatoma infestans* from Chuquisaca, Bolivia. *PLoS Negl Trop Dis* **2**: e202.
- Pulido XC, Pérez G, Vallejo GA (2008). Preliminary characterization of a *Rhodnius prolixus* hemolymph trypanolytic protein, this being a determinant of *Trypanosoma rangeli* KP1(+) and KP1(–) subpopulations' vectorial ability. *Mem Inst Oswaldo Cruz* **103**: 172–179.
- Ramirez CJ, Jaramillo CA, del Pilar Delgado M, Pinto NA, Aguilera G, Guhl F: Genetic structure of sylvatic, peridomestic and domestic populations of *Triatoma dimidiata* (Hemiptera: Reduviidae) from an endemic zone of Boyaca, Colombia. *Acta Trop* **93**: 23–29.
- Ratcliffe NA, Nigam Y, Mello CB, Garcia ES, Azambuja P (1996). *Trypanosoma cruzi* and erythrocyte agglutinins: a comparative study of occurrence and properties in the gut and hemolymph of *Rhodnius prolixus*. *Exp Parasitol* **83**: 83–93.
- Richer V, Kengne P, Cortez MR, Perrineau MM, Cohuet A, Fontenille D et al. (2007). Active dispersal by wild *Triatoma infestans* in the Bolivian Andes. *Trop Med Int Health* **12**: 759–764.
- Sacks D, Kamhawi S (2001). Molecular aspects of parasite-vector and vector–host interactions in Leishmaniasis. *Annu Rev Microbiol* **55**: 453–483.
- Schaub GA (1988). Developmental time and mortality of larvae of *Triatoma infestans* infected with *Trypanosoma cruzi*. *Trans R Soc Trop Med Hyg* **82**: 94–96.
- Schaub GA (1989). Does *Trypanosoma cruzi* stress its vectors? *Parasitol Today* **5**: 185–188.
- Schaub GA (1994). Pathogenicity of trypanosomatids on insects. *Parasitol Today* **10**: 463–468.
- Schaub GA (2006). Parasitogenic alterations of vector behaviour. *Int J Med Microbiol* **296**(Suppl 1): 37–40.
- Schaub GA, Lösch P (1989). Parasite/host-interrelationships of the trypanosomatids *Trypanosoma cruzi* and *Blastocrithidia triatomae* and the reduviid bug *Triatoma infestans*: influence of starvation of the bug. *Ann Trop Med Parasitol* **83**: 215–223.
- Schofield CJ (2000). *Trypanosoma cruzi*—The vector–parasite paradox. *Mem Inst Oswaldo Cruz* **95**: 535–544.
- Schofield CJ, Dias JC (1999). The Southern Cone initiative against Chagas disease. *Adv Parasitol* **42**: 1–27.
- Schofield CJ, Diotaiuti L, Dujardin JP (1999). The process of domestication in Triatominae. *Mem Inst Oswaldo Cruz* **94**(Suppl 1): 375–378.
- Schofield CJ, Jannin J, Salvatella R (2006). The future of Chagas disease control. *Trends Parasitol* **22**: 583–588.
- Schofield CJ, Galvão C (2009). Classification, evolution, and species groups within the Triatominae. *Acta Trop* **110**: 88–100.

- Silva MBA, Barbosa HS, Galvão C, Jurberg J, Carcavallo RU (2003). Comparative study of the stridulatory sulcus, buccula and rostrum of the nymphs of *Triatoma guazu* and *Triatoma jurbergi* by scanning electron microscopy (Hemiptera, Reduviidae). *Mem Inst Oswaldo Cruz* **98**: 335–344.
- Silva MBA, Barbosa HS, Jurberg J, Galvão C, Carcavallo RU (2002). Comparative ultrastructural analysis of the antennae of *Triatoma guazu* and *Triatoma jurbergi* (Hemiptera: Reduviidae) during the nymphal stage development. *J Med Entomol* **39**: 705–715.
- Slimi R, El Yacoubi S, Dumonteil E, Gourbière S (2009). A cellular automata model for Chagas disease. *Appl Math Model* **33**: 1072–1085.
- Tamay-Segovia P, Alejandre-Aguilar R, Martínez F, Villalobos G, de la Serna FJ, de la Torre P *et al.* (2008). Two *Triatoma dimidiata* clades (Chagas disease vector) associated with different habitats in southern Mexico and Central America. *Am J Trop Med Hyg* **78**: 472–478.
- Tartarotti E, Azeredo-Oliveira MTV, Ceron CR (2006). Phylogenetic approach to the study of triatomines (Triatominae, Heteroptera). *Braz J Biol* **66**: 703–707.
- Tolosa AC, Germano M, Cueto GM, Vassena C, Zerba E, Picollo MI (2008). Differential patterns of insecticide resistance in eggs and first instars of *Triatoma infestans* (Hemiptera: Reduviidae) from Argentina and Bolivia. *J Med Entomol* **45**: 421–426.
- Torres-Perez F, Acuna-Retamar M, Cook JA, Bacigalupo A, Garcia A, Cattán PE (2011). Statistical phylogeography of Chagas disease vector *Triatoma infestans*: testing biogeographic hypotheses of dispersal. *Infect Genet Evol* **11**: 167–174.
- Ursic-Bedoya RJ, Lowenberger CA (2007). *Rhodnius prolixus*: identification of immune-related genes upregulated in response to pathogens and parasites using suppressive subtractive hybridization. *Dev Comp Immunol* **31**: 109–120.
- Ursic-Bedoya RJ, Nazzaria H, Triana O, Wolff M, Lowenberger C (2008). Identification and characterization of two novel lysozymes from *Rhodnius prolixus*, a vector of Chagas disease. *J Insect Physiol* **54**: 593–603.
- Vallejo GA, Guhl F, Carranza JC, Lozano LE, Sánchez JL, Jaramillo JC *et al.* (2002). kDNA markers define two major *Trypanosoma rangeli* lineages in Latin-America. *Acta Trop* **81**: 77–82.
- Vallejo GA, Guhl F, Carranza JC, Moreno J, Triana O, Grisard EC (2003). Parity between kinetoplast DNA and mini-exon gene sequences supports either clonal evolution or speciation in *Trypanosoma rangeli* strains isolated from *Rhodnius colombiensis*, *R. pallens* and *R. prolixus* in Colombia. *Infect Genet Evol* **3**: 39–45.
- Vallejo GA, Guhl F, Schaub GA (2009). Triatominae–*Trypanosoma cruzi*/T. *rangeli*: vector–parasite interactions. *Acta Trop* **110**: 137–147.
- Vargas LG, Zeledon R (1985). Effect of fasting on *Trypanosoma cruzi* infection in *Triatoma dimidiata* (Hemiptera: Reduviidae). *J Med Entomol* **22**: 683.
- Villela MM, Souza JB, Mello VP, Azeredo BV, Dias JC (2005). Entomological surveillance for Chagas disease in the mid-western region of Minas Gerais State, Brazil, from 2000 to 2003. *Cad Saude Publica* **21**: 878–886.
- Waniek PJ, Castro HC, Sathler PC, Miceli L, Jansen AM, Araújo CA (2009). Two novel defensin-encoding genes of the Chagas disease vector *Triatoma brasiliensis* (Reduviidae, Triatominae): gene expression and peptide-structure modeling. *J Insect Physiol* **55**: 840–848.
- Waniek PJ, Jansen AM, Araújo CAC (2011). *Trypanosoma cruzi* infection modulates the expression of *Triatoma brasiliensis* def1 in the midgut. *Vector Borne Zoonotic Dis* **11**: 845–847.
- Weirauch C (2008). Cladistic analysis of Reduviidae (Heteroptera: Cimicomorpha) based on morphological characters. *Syst Entomol* **33**: 229–274.
- Weirauch C, Munro JB (2009). Molecular phylogeny of the assassin bugs (Hemiptera: Reduviidae), based on mitochondrial and nuclear ribosomal genes. *Mol Phylogenet Evol* **53**: 287–299.
- Whitten MMA, Mello CB, Gomes SAO, Nigam Y, Azambuja P, Garcia ES *et al.* (2001). Role of superoxide and reactive nitrogen intermediates in *Rhodnius prolixus* (Reduviidae)/*Trypanosoma rangeli* interactions. *Exp Parasitol* **98**: 44–57.
- Whitten M, Sun F, Tew I, Schaub GA, Soukou C, Nappis A *et al.* (2007). Differential modulation of *Rhodnius prolixus* nitric oxide activities following challenge with *Trypanosoma rangeli*, *T. cruzi* and bacterial cell wall components. *Insect Biochem Mol Biol* **37**: 440–452.
- WHO (2007). *Reporte sobre la enfermedad de Chagas. 17–20 de abril de 2005, Actualizado en Julio de 2007, Buenos Aires, Argentina*. WHO: Geneva. p 96.
- Wright S (1943). Isolation by distance. *Genetics* **28**: 114–138.
- Zeledón R (1981). *El Triatoma dimidiata (Latreille, 1811) y su relación con la enfermedad de Chagas*. Editorial Universidad Estatal a Distancia, Costa Rica. p 146.
- Zeledón R (1987). Life cycle of *Trypanosoma cruzi* in the insect vector. In: Brenner RR, Stoka AM (eds). *Chagas Disease Vectors (Anatomical and Physiological Aspects)*. CRC Press: Boca Raton, Florida. pp 59–75.
- Zu Dohna H, Cecere MC, Gurtler RE, Kitron U, Cohen JE (2007). Re-establishment of local populations of vectors of Chagas disease after insecticide spraying. *J Appl Ecol* **44**: 220–227.