

ARTICLE

Clinical and biochemical features guiding the diagnostics in neurometabolic cutis laxa

Thatjana Gardeitchik¹, Miski Mohamed^{1,19}, Björn Fischer^{2,19}, Martin Lammens³, Dirk Lefeber⁴, Baiba Lace⁵, Michael Parker⁶, Ki-Joong Kim⁷, Bing C Lim⁷, Johannes Häberle⁸, Livia Garavelli⁹, Sujatha Jagadeesh¹⁰, Ariana Kariminejad¹¹, Deanna Guerra¹², Michel Leão¹³, Riikka Keski-Filppula¹⁴, Han Brunner¹⁵, Leo Nijtmans¹, Bert van den Heuvel^{1,16}, Ron Wevers^{1,16}, Uwe Kornak^{2,17} and Eva Morava^{*,1,18}

Patients with cutis laxa (CL) have wrinkled, sagging skin with decreased elasticity. Skin symptoms are associated with variable systemic involvement. The most common, genetically highly heterogeneous form of autosomal recessive CL, ARCL2, is frequently associated with variable metabolic and neurological symptoms. Progeroid symptoms, dysmorphic features, hypotonia and psychomotor retardation are highly overlapping in the early phase of these disorders. This makes the genetic diagnosis often challenging. In search for discriminatory symptoms, we prospectively evaluated clinical, neurologic, metabolic and genetic features in our patient cohort referred for suspected ARCL. From a cohort of 26 children, we confirmed mutations in genes associated with ARCL in 16 children (14 probands), including 12 novel mutations. Abnormal glycosylation and gyration abnormalities were mostly, but not always associated with *ATP6VOA2* mutations. Epilepsy was most common in *ATP6VOA2* defects. Corpus callosum dysgenesis was associated with *PYCR1* and *ALDH18A1* mutations. Dystonic posturing was discriminatory for *PYCR1* and *ALDH18A1* defects. Metabolic markers of mitochondrial dysfunction were found in one patient with *PYCR1* mutations. So far unreported white matter abnormalities were found associated with *GORAB* and *RIN2* mutations. We describe a large cohort of CL patients with neurologic involvement. Migration defects and corpus callosum hypoplasia were not always diagnostic for a specific genetic defect in CL. All patients with *ATP6VOA2* defects had abnormal glycosylation. To conclude, central nervous system and metabolic abnormalities were discriminatory in this genetically heterogeneous group, although not always diagnostic for a certain genetic defect in CL. *European Journal of Human Genetics* (2014) 22, 888–895; doi:10.1038/ejhg.2013.154; published online 21 August 2013

Keywords: cutis laxa; metabolic; inborn errors of glycosylation; mitochondrial function; neurologic; mutation

INTRODUCTION

In inherited cutis laxa (CL), patients have progeroid, inelastic, sagging skin, associated with abnormal structure or function of elastic fibers. These abnormalities are either because of direct structural defects, or abnormal maturation and secretion of the involved proteins. The skin symptoms are associated with variable systemic involvement. The underlying pathomechanism of this multisystem involvement is not fully understood.

CL syndromes show two major phenotypes: syndromes with severe multiorgan involvement and syndromes with central nervous system (CNS) involvement and growth delay.^{1,2} CL has an estimated incidence of 1:2–400 000, and shows X-linked, autosomal dominant and autosomal recessive inheritance.² Only around 100 cases have

been described with a known mutation, and in most patients the underlying genetic defect has not been discovered yet. Diagnosis based on clinical features is highly challenging because of significant phenotypic overlap.

X-linked CL (XLCL or occipital horn syndrome, OHS, MIM 304150) is clinically distinct from the other CL syndromes because of early presentation, occipital horns and variable CNS involvement. XLCL is caused by mutations in *ATP7A*, a copper transporter gene.^{3,4} Diagnosis can be made based on clinical features, low serum levels of copper and ceruloplasmin and mutation analysis.^{3,4}

In autosomal dominant CL (MIM 123700), the family history, the appearance of skin signs and organ involvement is variable.

¹Department of Pediatrics, Institute for Metabolic and Genetic Disease, Radboud University Medical Centre, Nijmegen, The Netherlands; ²Institute of Medical Genetics and Human Genetics, Charité Universitätsmedizin, Berlin, Germany; ³Department of Pathology, Institute for Metabolic and Genetic Disease, Radboud University Medical Centre, Nijmegen, The Netherlands; ⁴Department of Neurology, Institute for Metabolic and Genetic Disease, Radboud University Medical Centre, Nijmegen, The Netherlands; ⁵Medical Genetics Clinic, Children's Clinical University Hospital, Riga, Latvia; ⁶Sheffield Clinical Genetics Service, Sheffield Children's Hospital, Sheffield, UK; ⁷Department of Pediatrics, Seoul National University Hospital, Seoul, South Korea; ⁸Department of Pediatrics, University Children's Hospital, Zürich, Switzerland; ⁹Clinical Genetics Unit, Obstetric and Pediatric Department, Santa Maria Nuova Hospital IRCCS, Reggio Emilia, Italy; ¹⁰Department of Clinical Genetics, Chennai, India; ¹¹Kariminejad-Najmabadi Pathology and Genetics Center, Teheran, Iran; ¹²Department of Biomedical Sciences, University of Modena and Reggio Emilia, Modena, Italy; ¹³Pediatric Neurology Unit and Neurogenetics Unit, Hospital S João, Porto, Portugal; ¹⁴Department of Clinical Genetics, Oulu University Hospital, Oulu, Finland; ¹⁵Department of Human Genetics, Institute for Metabolic and Genetic Disease, Radboud University Medical Centre, Nijmegen, The Netherlands; ¹⁶Laboratory for Genetic Endocrine and Metabolic Diseases, Institute for Metabolic and Genetic Disease, Radboud University Medical Centre, Nijmegen, The Netherlands; ¹⁷FG Development and Disease, Max Planck Institute for Molecular Genetics, Berlin, Germany; ¹⁸Hayward Genetics Center, Tulane University Medical Center, New Orleans, LA, USA

¹⁹These authors contributed equally to this work.

*Correspondence: Professor E Morava, Department of Pediatrics, Institute for Metabolic and Genetic Disease, Radboud University Medical Centre, PO Box 9101, 6500 HB, Nijmegen, The Netherlands or Tulane University Medical Center, Hayward Genetics Center, New Orleans, LA, USA. Tel: +1 (504) 988 5101; Fax: +1 (504) 988 1763; E-mail: e.morava@cukz.umcn.nl or emoravakozicz@tulane.edu

Received 17 November 2012; revised 11 June 2013; accepted 12 June 2013; published online 21 August 2013

Mental development is normal. Some patients carry mutations in the elastin (*ELN*) or fibulin 5 (*FBLN5*) gene.^{5,6} Autosomal recessive CL (ARCL) is the most prevalent and variable form of inherited neonatal CL. ARCL is divided in three major groups: type 1, 2 and 3 (ARCL1, MIM 219100; ARCL2A, MIM 219200; ARCL2B, MIM 612940; WSS, MIM 278250; ARCL3A, MIM 219150; ARCL 3B, MIM 614438; geroderma osteodysplasticum (GO), MIM 231070; De Barys Syndrome (DBS), MIM 219150; macrocephaly, alopecia, CL, scoliosis syndrome (MACS), MIM 613075). ARCL1 is a life-threatening disease with generalized neonatal CL and severe systemic, mainly cardiopulmonary involvement because of mutations in *FBLN4* (*EFEMP2*), *FBLN5* or *LTBP4*.^{7–11}

ARCL2 is a group of syndromes due to variable gene defects, resulting in overlapping phenotypes without major cardiopulmonary symptoms, but with frequent CNS involvement. ARCL2A (including ATP6V0A2-CDG, Debré-type CL and wrinkly skin syndrome) is caused by mutations in the *ATP6V0A2* gene.^{2,12,13} Generalized CL is already present at birth and intriguingly improves over time. Patients have suggestive facial features with hanging eyelids, down-slanting palpebral fissures, muscle hypotonia, epilepsy and mild-to-moderate developmental delay.^{2,12,14} The combination of the biochemical marker of abnormal protein glycosylation (congenital disorder of glycosylation (CDGII)) and cobblestone-like brain dysgenesis in ARCL2 is pathognomonic for ARCL2A.^{2,15,16} The recently defined ARCL2B is caused by mutations in the *PYCR1* gene, involved in *de novo* mitochondrial proline synthesis, leading to a progeroid

appearance, parchment-like skin, triangular face, joint luxations, muscle hypotonia, dystonic posturing and developmental delay.^{17,18} Some patients have normal intelligence.^{19,20} Corpus callosum dysgenesis is common in ARCL2B.¹⁸ The similar and metabolically related P5CS deficiency (P5CSD) is caused by mutations in *ALDH18A1*.^{21,22}

Patients with DBS, or ARCL3, have CL, growth retardation, corneal clouding, athetoid movements and developmental delay.²³ Some children with a clinical diagnosis of DBS also carry mutations in the *PYCR1* or *ALDH18A1* genes.^{18,24}

GO, caused by *GORAB* mutations is another ARCL involving the Golgi apparatus function. Frequent bone fractures and joint luxations are characteristic, however, intellectual disability is unusual.²⁵ MACS syndrome, caused by mutations in the *RIN2* gene is a disorder with very characteristic, discriminatory facial features with sagging chin and severe developmental delay.^{26–28}

Several other syndromes are described in which CL is an associated feature. Intriguing examples are the syndromes caused by genetic alterations in the RAS-MAPK pathway. It is well accepted that Costello syndrome (CS; MIM 218040) can present with CL, however, skin manifestations in other RAS-MAPK-associated syndromes are more variable. CL has been recently described in patients with both *BRAF* and *PNTPI1* mutations (causing cardiofaciocutaneous syndrome (CFC; MIM 115150) and Noonan syndrome (NS; MIM 163950), respectively, Figure 1a. The typical features diagnostic for the syndromes were not apparent at birth²⁹ and patients could be



Figure 1 CL in patients with different genetic defects. (a) Patients with RAS-MAPK pathway-related defects (*BRAF*, *SHOC2* and *PTPN11* mutations, respectively). (b) Patient with *RIN2* mutation, (c) patient with *ATP6V0A2* mutation, (d) patient with *ALDH18A1* mutation, (e) patient with *GORAB* mutation and (f) patient with *PYCR1* mutation.

therefore initially evaluated for a possible ARCL. Especially, progeroid features in patients with *SHOC2* mutations overlap with those with *PYCR1*.

Other syndromes with neurological symptoms include, for example, Keutel syndrome, a disorder with hearing loss, cartilaginous ossification and intellectual disability and mild CL (MIM 245150); Sotos syndrome, an overgrowth syndrome with spasticity and developmental delay (MIM 117550); and Cantu syndrome, a syndrome of hypertrichosis, skeletal dysplasia, cardiomyopathy and intellectual disability (MIM 114620).³⁰

In this article, we evaluate a large cohort of patients suspected with ARCL based on the clinical phenotype and the presence of neurological features. In search for discriminatory symptoms to find the underlying molecular defect, we propose a diagnostic approach in this genetically heterogeneous neurological disease.

PATIENTS AND METHODS

We prospectively evaluated the clinical, metabolic, neurological and genetic features of a cohort of patients referred between 2008 and 2011 for consult to our clinical center at the Institute of Genetic and Metabolic Disease (IGMD) with a suspected ARCL syndrome. In this period, 36 patients were referred from 12 countries. None of the patients included in this cohort had previous genetic diagnostic tests or metabolic analysis for glycosylation disorders or evaluation of mitochondrial function. However, screening for abnormal copper or ceruloplasmin levels to rule out OHS had been performed.

To exclude other inheritance patterns and ARCL type 1, we used the following diagnostic criteria for suspected ARCL (non-type 1) in our cohort: (1) neonatal CL, (2) no affected parents and (3) absence of severe cardiopulmonary or urogenital involvement. In order to evaluate the clinical association between CL and neurologic involvement and to select a coherent group, we used the additional selection term (4) central nervous involvement (see Supplementary Figure 1). Applying these criteria we excluded 10 patients. Based on clinical features and history, three patients were clinically diagnosed with either acquired CL (post infection; $n=1$) or autosomal dominant CL ($n=2$). One patient was clinically diagnosed with ARCL type 1 (this patient had lethal cardiopulmonary involvement and an affected brother, but the patient remained genetically unconfirmed).³¹ One patient, with a severe multiple malformation syndrome, suspected with a chromosomal abnormality had a *de novo* paternal inverted duplication of the entire short arm of chromosome 11 including the *HRAS* locus, described recently.³² In five children with progeroid skin anomalies and/or syndromal presentation

associated with wrinkled skin, a MAPK pathway-related defect has been considered and confirmed. In one patient, a *HRAS* mutation was found, in two patients *BRAF* missense mutations were found, already described in association with CL²⁹ and in two patients the common missense mutation in the *SHOC2* gene³³ was confirmed. This led us to a cohort of 26 patients meeting the criteria for suspected autosomal recessive inheritance non-type 1 (see Supplementary Figure 1). The same geneticist at IGMD evaluated all patients regarding clinical features, disease history and family history following our diagnostic flowchart protocol (Figure 2).

Patients

All patients were initially evaluated after birth because of CL and clinically followed for a minimum of 2 years (2–18 years). Patients 1, 2, 6–8, 14 and 15 were offspring of consanguineous parents. Patients 9 and 13 and patients 14 and 15 are siblings. All children, except for patients 2, 12, 13 and 15 underwent skin biopsy (for histology and methods see Supplementary Data). Clinical and neurological evaluation, ophthalmologic investigation, skeletal survey, echocardiogram and ECG, standard developmental assessment and IQ measurement and a standard cranial MRI were performed in all cases, except in patients 8 and 11. For clinical details see Table 1.

Metabolic investigations

Blood lactate, blood gas, glucose, ammonia, liver function tests, creatine kinase, triglycerides, cholesterol, serum amino acids, serum acyl-carnitines, urine organic acids, amino acids and purines/pyrimidines were assessed by standard methods in all patients. Ceruloplasmin levels were previously screened. Transferrin isoelectric focussing (TIEF) and apolipoprotein-C isoelectrophoresis (ApoC-III IEF) were carried out as screening for glycosylation disorders by standard methods (see Supplementary Data).^{34,35}

Molecular genetic studies

Genomic DNA was extracted from peripheral blood lymphocytes using standard salting out procedures.³⁶ Genotyping was performed by using the Affymetrix GeneChip Mapping 10K 2.0 array or the Affymetrix NspI 250K SNP array. All SNP array experiments were performed and analyzed according to the manufacturer's protocols (Affymetrix, Santa Clara, CA, USA). Homozygosity mapping was performed using pLINK v1.06 (Shaun Purcell, <http://pngu.mgh.harvard.edu/purcell/plink/>; Boston, MA, USA) using a homozygous window of 50 SNPs tolerating two heterozygous SNPs and 10 missing SNPs per window.

Mutation analysis of *ATP6V0A2*, *GORAB*, *ALDH18A1*, *PYCR1*, *FBLN5*, *PTPN11*, *BRAF*, *HRAS*, *SHOC2*, *NSD1* and *RIN2* was performed by standard methods and as described previously.^{4,12,13,17,18,24,25,33} PCR products were

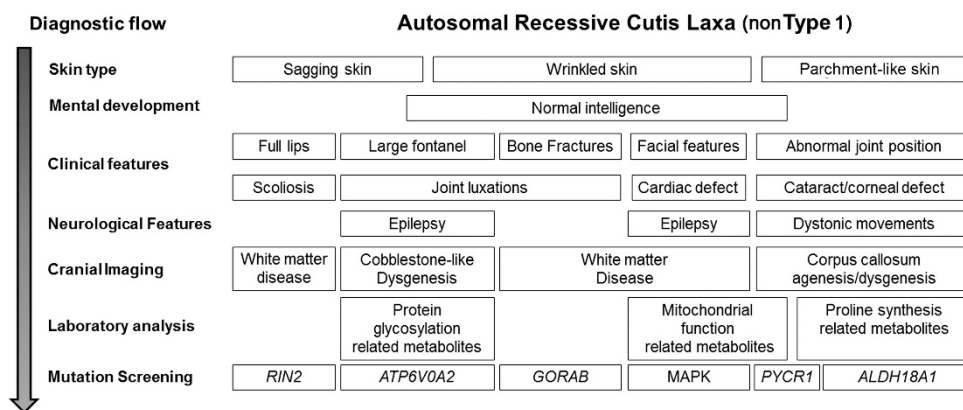


Figure 2 Diagnostic flowchart for evaluation of a new CL patient with suspected autosomal recessive inheritance (non-type 1). The facial features of *PYCR1*, *ALDH18A1* and *GORAB*-related syndromes are similar to each other and different from the *ATP6V0A2*-related ARCL2A. Mild mental retardation and frequent bone fractures suggest *GORAB* gene mutations and severe mental retardation and CCA on MRI is indicative of *PYCR1* gene mutations. If no mutation is found in these genes, *ALDH18A1* should be screened. N.B. RAS-MAPK-related defects are not part of the ARCL syndromes, however, because of the possible absence of the typical features diagnostic for these syndromes in early life some patients, later diagnosed with an MAPK-related defect, could be initially evaluated for a possible ARCL.

Table 1 Clinical and neurological features of 16 patients with autosomal recessive cutis laxa type II

Patients	Developmental						Abnormal brain MRI	Dysmorphic features	Metabolic abnormalities	Mutation (gene)
	Hypotonia	delay	Dystonia	Spasticity	Epilepsy	Visual loss				
1	+/-	+	-	-	+	-	Cystic white matter lesion	Sagging chin Long face	ApoC-III	<i>RIN2</i>
2	+	+	+	+	+	Corneal clouding	Cerebral atrophy	Progeria, beaked nose	-	<i>PYCR1</i>
3	+	+	+	-	+	Corneal clouding	Corpus callosum dysgenesis	Triangular face large ears	-	<i>PYCR1</i>
4	+	+	-	-	+	Cataract Esotropia	Corpus callosum dysgenesis	Triangular face, long ears	-	<i>PYCR1</i>
5	+	+	+	+	+	Cataract	Corpus callosum dysgenesis, CA	Long face large ears	-	<i>ALDH18A1</i>
6	+	+	+	+	+	Corneal lesions	CCA, poli-microgyria	Triangular face, long ears	-	<i>PYCR1</i>
7	+	+	-	-	+	Cataract esotropia	Cerebral atrophy	Progeria, beaked nose	Lactate, EMA	<i>PYCR1</i>
8	+	-	+	-	-	Corneal clouding	NA	Down-slanting droopy eyes	TIEF/ApoC-III	<i>ATP6VOA2</i>
9 ^a	+	+	-	-	-	Esotropia	Cobblestone-like dysgenesis	Down-slanting droopy eyes	TIEF/ApoC-III	<i>ATP6VOA2</i>
10	+	+	-	-	+	Esotropia	Cobblestone-like dysgenesis	Down-slanting droopy eyes	TIEF/ApoC-III	<i>ATP6VOA2</i>
11	+	+	-	-	+	-	NA	Down-slanting droopy eyes	TIEF/ApoC-III	<i>ATP6VOA2</i>
12	+	+	-	-	-	Esotropia	Cobblestone-like dysgenesis	Down-slanting droopy eyes	TIEF/ApoC-III	<i>ATP6VOA2</i>
13 ^a	+	+	-	+/-	-	-	Cobblestone-like dysgenesis	Down-slanting droopy eyes	NA	<i>ATP6VOA2</i>
14 ^a	+	+	-	+	+	+/-	White matter lesions	Long face, large ears	-	<i>GORAB</i>
15 ^a	+	+	-	+	-	-	White matter lesions	Long face, large ears	-	<i>GORAB</i>
16	+	+	-	-	+	-	-	Extreme face laxity	-	<i>GORAB</i>

Abbreviations: ApoC-III, apolipoprotein CIII isoelectrophoresis; CA, cerebellar atrophy; EMA, ethylmalonic acid; NA, not available; TIEF, transferrin isoelectric focussing.
^aPatients 9 and 13 and patients 14 and 15 are siblings.

sequenced using the ABI PRISM BigDye Terminator Cycle Sequencing V2.0 Ready Reaction Kit and analyzed with the ABI PRISM 3730 DNA analyzer (Applied Biosystems, Foster City, CA, USA).

RESULTS

Patients

Patients were initially suspected with a clinical diagnosis based on characteristic features, like characteristic face and alopecia (*RIN2* mutations; MACS syndrome: patient 1), arthrogryposis or dystonia (suspected *PYCR1/ALDH18A1*; *ARCL2B*), or typical facial features suggesting *ATP6VOA2* mutations (*ARCL2A*), or bone fractures suggesting *GORAB* mutations (*GO*). Several patients had no discriminatory features at initial clinical evaluation (further unspecified *ARCL2*-like syndrome).

All patients underwent extensive neurologic evaluation. For neurologic data see Table 1.

Mutation analysis

From the 26 patients, we confirmed a mutation in 16 cases (Table 2). In patient 2, homozygosity mapping detected a homozygous region of 3.1 Mb on chromosome 17q25.3 delimited by SNP_A-1939818 and SNP_A-2039852 with *PYCR1* in the region. Direct DNA sequencing of *PYCR1* revealed a homozygous splicing mutation. Homozygosity mapping in the family of patients 14 and 15 showed that the largest homozygous region of 24.8 Mb was defined by 102 homozygous SNPs on 1q23.3-1q31.1 and was delimited by SNP_A-1511542 and

SNP_A-1509763. The region contained *GORAB*. By direct DNA sequencing of *GORAB* in both patients, we found a novel homozygous missense mutation. Direct sequencing of the candidate gene identified mutations in patients 1 (*RIN2*), 3, 4, 6, 7 (*PYCR1*), 5 (*ALDH18A1*), 8-13 (*ATP6VOA2*) and 16 (*GORAB*). For more details and prediction of pathogenicity of novel mutations, see Table 2 and Supplementary Data, respectively.

Laboratory results

Lactate levels and blood alanine levels were increased in patient 7 once. No significant abnormalities were detected in the urine organic acids, except for mild ethylmalonic aciduria in patient 7 (22 and 27 $\mu\text{mol}/\text{mmol}$ creatinine; normal <20 $\mu\text{mol}/\text{mmol}$ creatinine), suspected with *ARCL2B*. Blood ammonia, triglycerides, cholesterol, serum acyl-carnitines, urine amino acids and purines/pyrimidines were normal in all patients.

TIEF results were abnormal in patients 8-12 showing a CDG type II pattern and abnormal ApoC-III isoforms (ApoC-III1: 72-76%; control range 33-67%) and ApoC-III2: 18-21% (control range 27-60%). In patient 13, no TIEF was performed. In patient 1, the IEF was slightly abnormal.²⁸

Ophthalmologic evaluation

Patients 2-8 had corneal clouding and/or cataract; patients 4, 7, 9, 10, 12, 13, 14 and 15 had strabismus.

Table 2 Confirmed mutations in 16 patients with cutis laxa

Patient	Gene	cDNA	Consequence	Mutation previously reported in other patients
1	<i>RIN2</i>	c.1731delC c.1731delC	p.Ile578Serfs*4 p.Ile578Serfs*4	Albrecht <i>et al</i> ²⁷ ; Basel-Vanagaite <i>et al</i> ²⁶
2	<i>PYCR1</i>	c.540 + 1G>A c.540 + 1G>A	splicing	Reversade <i>et al</i> ¹⁸ ; Yildirim <i>et al</i> ²⁰
3	<i>PYCR1</i>	c.355C>T c.356G>A	p.Arg119Cys p.Arg119His	— Reversade <i>et al</i> ¹⁸
4	<i>PYCR1</i>	c.355C>T c.355C>T	p.Arg119Cys p.Arg119Cys	— —
5	<i>ALDH18A1</i>	c.1273C>T c.2225G>T	p.Arg425Cys p.Ser742Ile	Zampatti <i>et al</i> ⁸⁸ —
6	<i>PYCR1</i>	c.772G>A c.772G>A	p.Val258Met p.Val258Met	— —
7	<i>PYCR1</i>	c.535G>A c.535G>A	p.Ala179Thr p.Ala179Thr	Reversade <i>et al</i> ¹⁸ —
8	<i>ATP6VOA2</i>	c.754delT c.754delT	p.Tyr252Ilefs*15 p.Tyr252Ilefs*15	— —
9 ^a	<i>ATP6VOA2</i>	c.600delC 110-kb deletion	p.Ile201Serfs*20 p. deletion	Fischer <i>et al</i> ⁴⁴ —
10	<i>ATP6VOA2</i>	c.1101delC c.1562_1563delins9	pThr368Leufs*43 p.Ile521Metfs*16	— —
11	<i>ATP6VOA2</i>	c.1326 + 1G>A; c.2287C>T	splicing/ p.His763Tyr	—
12	<i>ATP6VOA2</i>	c.1605 + 1G>A c.1605 + 1G>A	splicing	—
13 ^a	<i>ATP6VOA2</i>	c.600delC 110-kb deletion	p.Ile201Serfs*20 p. deletion	— —
14 ^a	<i>GORAB</i>	c.524C>T c.524C>T	p.Ser175Phe p.Ser175Phe	— —
15 ^a	<i>GORAB</i>	c.524C>T c.524C>T	p.Ser175Phe p.Ser175Phe	— —
16	<i>GORAB</i>	c.3676G>T c.3676G>T	p.Glu123* p.Glu123*	—

^aPatients 9 and 13 and patients 14 and 15 are siblings.

Cranial imaging

Cranial MRI in patient 1 at the age of 18 years showed cerebral atrophy. The gyration was normal. There were bilateral, cystic-gliotic, parietal periventricular white matter abnormalities observed (Figure 3a). The pontocerebellar structures and the corpus callosum were normal, and no abnormalities of the basal ganglia were present. Patients 3, 4 and 6 had partial dysgenesis of the corpus callosum. MRI in patient 5 revealed cerebellar vermis hypoplasia and a thin corpus callosum. In patient 6, cranial CT imaging showed severe cerebral atrophy, abnormal frontal gyration (polimicrogyria) and agenesis of the corpus callosum. Patients 9, 10, 12 and 13 had a frontotemporal cobblestone-like dysgenesis (Figure 4). MRI in patient 14 revealed mild periventricular white matter changes, besides cortical atrophy from the age of 10 years (Figure 3b). Patient 15 had only minimal, nonspecific periventricular white matter changes at the age of 16 years (Figure 3c). The cranial MRI of patient 16 at the age of 6 years was normal. Patients 2 and 7 had no specific MRI abnormalities, only variable degrees of cortical atrophy. A summary of the MRI findings is given in Table 1.

Histology

From all children, except for patients 2, 8, 9 and 11, a skin biopsy was taken from either the lower forearm, the upper thigh or the lower

abdominal region (not necessarily the location with the most severe CL). Light microscopy showed severe elastin abnormalities in all patients. In all samples, a decreased amount of irregular, short, thick and often fragmented elastic fibers was seen in addition to a more general disorganized extracellular matrix. Electron microscopy was performed in patients 1, 3, 7, 9, 16 and was characteristic for the disease localization in patients 1 and 9 and patients 3 and 7 (Golgi and mitochondrial involvement, respectively, for more details see Supplementary Data).

DISCUSSION

Since CL or wrinkled skin has been described in > 50 syndromes (Oxford Medical Database), most of which are associated with neurological involvement, it is not easy to suggest a diagnostic strategy. Making the correct diagnosis is complicated because of phenotypic diversity in patients with the same genetic defect, but on the other hand there is a significant phenotypic overlap between the different syndromes.

There are only a few discriminatory or even pathognomonic symptoms for each type of disease. In addition, although not always, discriminatory metabolic alterations might give some clues, as they are surprisingly common.

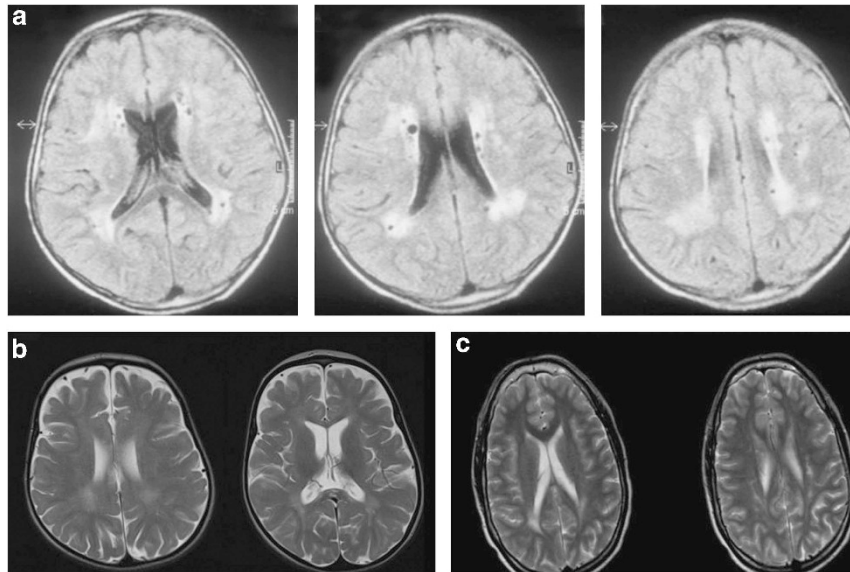


Figure 3 White matter anomalies in patients diagnosed with *RIN2* and *GORAB* mutations. (a) Axial FLAIR images of patient 1 diagnosed with MACS syndrome at the age of 18, showing periventricular white matter disease with cystic lesions in the white matter. The U fibers are spared. (b, c) Mild white matter changes in the periventricular white matter and in the corpus callosum on axial T2 images in patients 14 and 15 at age of 10 and 16 years, diagnosed with GO syndrome, intellectual disability and spasticity.

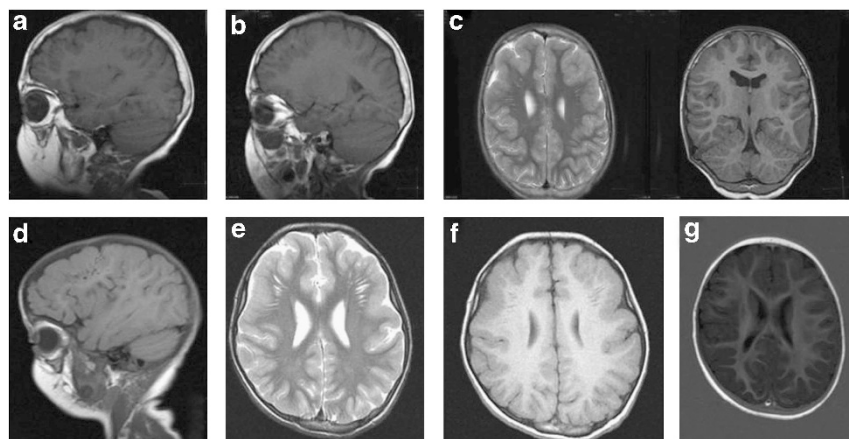


Figure 4 MRI images of patients with *ATP6V0A2* mutations. (a, b) Demonstrate frontal and frontotemporal cobblestone-like brain dysgenesis on sagittal T1 weighed images in patient 9 at the age of 9 years. Note the enlarged Virchow space under the abnormally developed brain region. (c, d) Show a T2 weighed (axial) and a T1 weighed (coronal) image both showing frontotemporal cobblestone-like brain dysgenesis. (e, f) Show axial images of frontotemporal cobblestone-like brain dysgenesis respectively on T2- and T1-weighted images in patient 10 at the age of 2. (g) Shows an axial image showing mild, frontal cobblestone-like brain dysgenesis.

Our study confirms that the combining of biochemical analyses, neurological findings and neuroimaging in CL patients will facilitate a guided mutational analysis and a quick correct diagnosis (see suggested diagnostic chart Figure 2).

Neurological features and the use of neuroimaging in ARCL2

Several CL syndromes are presenting with muscle hypotonia (*ATP6V0A2* and *PYCR1* defects), spasticity (*PYCR1* and *ALDH18A1* defects), dystonic, athetoid movements (*ALDH18A1* and *PYCR1* defect) or epilepsy (*ALDH18A1* and *ATP6V0A2* defects). Developmental delay is frequent in patients with *ATP6V0A2* and *PYCR1* mutations.^{19,25} Up until now, no neurological involvement has been described in GO patients carrying *GORAB* mutations and most of the patients had a normal mental development.²⁵ The finding of

spasticity, intellectual disability and white matter involvement in our patients with *GORAB* mutations is therefore unique, and could be either because of a broad spectrum of phenotypic variability, or a consequence of a possible second disease based on the high consanguinity in this family.

Interestingly, several forms of CL syndromes occur in association with congenital brain developmental defects. As our first description of a novel CL syndrome with variable cortical anomalies and a genetic defect in *ATP6V0A2*, several new patients have been reported.^{12,16} In children diagnosed with *ATP6V0A2* mutations, the presence of cobblestone-like brain dysgenesis in combination with glycosylation abnormalities is pathognomonic; the cerebral abnormalities are dominated by bilateral cortical malformation of the posterior parts of the frontal lobes or the temporal lobes and enlarged perivascular

spaces. Surprisingly, one of the patients (patient 6) with a confirmed *PYCR1* mutation also had gyration anomalies: polymicrogyria, a recognizably different type than the cobblestone brain-like abnormalities and obviously, without glycosylation abnormalities.

An important observation is the common presence of corpus callosum dysgenesis or corpus callosum agenesis (CCA) in patients with *PYCR1* mutations. Although the presentation of CCA is nonspecific, the combination of a CL syndrome with progeroid features and corpus callosum dysgenesis is highly suggestive.^{12,17,20}

So far, no brain anomalies have been reported in the patients diagnosed with MACS syndrome. The finding of periventricular cystic lesions in our patient (patient 1) diagnosed with a *RIN2* mutation could be a coincidence, however, no suggestive perinatal history or vascular aberrations could be confirmed as an underlying basis of this feature. Similar, periventricular, cystic abnormalities have been previously observed in other metabolic multiple malformation syndromes as well; for example, in patients with Lowe syndrome (MIM 309000), which is also due to defects in an endosomal protein.³⁷

Metabolic abnormalities

All patients with *ATP6V0A2* mutations had a CDG type II pattern and abnormal ApoC-III screening results. We also found metabolic abnormalities suggestive for mitochondrial dysfunction (lactate, alanine and Krebs cycle intermediates elevation) in one of the five patients diagnosed with *PYCR1* mutations (patient 7). This is in line with the findings of Kornak *et al*, demonstrating mitochondrial dysfunction, altered membrane potential and apoptosis rate, abnormal mitochondrial network on oxidative stress and ultrastructural changes by electromicroscopy.¹⁸ In the medical literature, no metabolic abnormalities have been described in patients carrying *PYCR1* mutations, however, out of the almost 30 reported patients^{17–20,38–41} metabolic studies have been only performed in four cases.

Until now, ten patients have been described with mutations in *ALDH18A1*.^{21,22,38,42,43} The two patients, presented by Baumgartner *et al*,²² showed low ornithine, arginine, citrulline and proline. Except for low ornithine levels in two of the patients described by Bicknell *et al*,²¹ no amino-acid profile abnormalities have been described in the other patients. Ammonia was increased in three of the ten cases. Although not present in all patients, the finding of metabolic abnormalities is indicative for these two diseases and therefore we advise to evaluate lactate, ammonia and the serum amino acids in unsolved CL patients.

Clinical flowchart

Using this protocol combining clinical/neurological features, biochemical abnormalities and neuroimaging, we genetically solved 16 (14 probands) out of 26 patients with suspected *ARCL2* (or 24 out of 36 unselected CL patients) from our patient cohort. Hereby, we suggest to follow this diagnostic flowchart (Figure 2). Although the facial features related to *PYCR1*, *ALDH18A1* and *GORAB* mutations overlap, in case of unique clinical features like scoliosis with alopecia (*RIN2*) or frequent bone fractures (*GORAB*), seizures associated with improving CL pattern with aging (*ATP6V0A2*) or dystonia associated with peripheral distribution of CL (*PYCR1*) direct mutation analysis can be performed.

In patients with a CL syndrome, especially those with neurologic involvement, but without the obvious presence of clinical discriminatory features, we suggest to perform glycosylation studies, measure blood lactate, ammonia, serum amino acids, alanine and proline-related metabolites and perform urine organic acid analysis.

MRI brain imaging is suggested in all patients because of the high prevalence of characteristic findings in different CL types.

CONCLUSION

Here we describe a large cohort of patients presenting with CL and variable neurological involvement. As a novel finding, we detected white matter anomalies in patients diagnosed with *GORAB* or *RIN2* mutation. In nine patients (eight probands), the type of neurological involvement (eg, dystonia or cobblestone-like brain dysgenesis) served as a hallmark for the clinical and molecular diagnosis, while in seven cases combining the clinical information with metabolic data (eg, TIEF/ApoC-III, lactate) led to the correct genetic diagnosis, see also Table 1. We suggest to perform careful neurologic evaluation and neuroimaging in CL patients.

CONFLICT OF INTEREST

The authors declare no conflict of interest.

ACKNOWLEDGEMENTS

We are thankful for the technical support of Rolf Pfund and Karin Huyben. The study was supported by the Institute of Genetic and Metabolic Disease.

- 1 Van Maldergem L, Loeys B: FBLN5-related cutis laxa; in: Pagon RA, Bird TD, Dolan CR, Stephens K, Adam MP (eds) *GeneReviews*. Seattle, WA, USA: University of Washington, Seattle, 1993.
- 2 Morava E, Guillard M, Lefeber DJ, Wevers RA: Autosomal recessive cutis laxa syndrome revisited. *Eur J Hum Genet* 2009; **17**: 1099–1110.
- 3 Kaler SG: ATP7A-related copper transport diseases-emerging concepts and future trends. *Nat Rev Neurol* 2011; **7**: 15–29.
- 4 Kaler SG, Gallo LK, Proud VK *et al*: Occipital horn syndrome and a mild Menkes phenotype associated with splice site mutations at the MNK locus. *Nat Genet* 1994; **8**: 195–202.
- 5 Zhang MC, He L, Giro M, Yong SL, Tiller GE, Davidson JM: Cutis laxa arising from frameshift mutations in exon 30 of the elastin gene (ELN). *J Biol Chem* 1999; **274**: 981–986.
- 6 Markova D, Zou Y, Ringpfeil F *et al*: Genetic heterogeneity of cutis laxa: a heterozygous tandem duplication within the fibulin-5 (FBLN5) gene. *Am J Hum Genet* 2003; **72**: 998–1004.
- 7 Loeys B, Van Maldergem L, Mortier G *et al*: Homozygosity for a missense mutation in fibulin-5 (FBLN5) results in a severe form of cutis laxa. *Hum Mol Genet* 2002; **11**: 2113–2118.
- 8 Megarbane H, Florence J, Sass JO *et al*: An autosomal-recessive form of cutis laxa is due to homozygous elastin mutations, and the phenotype may be modified by a heterozygous fibulin 5 polymorphism. *J Invest Dermatol* 2009; **129**: 1650–1655.
- 9 Renard M, Holm T, Veith R *et al*: Altered TGFbeta signaling and cardiovascular manifestations in patients with autosomal recessive cutis laxa type I caused by fibulin-4 deficiency. *Eur J Hum Genet* 2010; **18**: 895–901.
- 10 Urban Z, Huchtagowder V, Schurmann N *et al*: Mutations in *LTBP4* cause a syndrome of impaired pulmonary, gastrointestinal, genitourinary, musculoskeletal, and dermal development. *Am J Hum Genet* 2009; **85**: 593–605.
- 11 Callewaert B, Su CT, Van Damme T *et al*: Comprehensive clinical and molecular analysis of 12 families with type 1 recessive cutis laxa. *Hum Mutat* 2013; **34**: 111–121.
- 12 Huchtagowder V, Morava E, Kornak U *et al*: Loss-of-function mutations in *ATP6V0A2* impair vesicular trafficking, tropoelastin secretion and cell survival. *Hum Mol Genet* 2009; **18**: 2149–2165.
- 13 Kornak U, Reynders E, Dimopoulou A *et al*: Impaired glycosylation and cutis laxa caused by mutations in the vesicular H⁺-ATPase subunit *ATP6V0A2*. *Nat Genet* 2008; **40**: 32–34.
- 14 Morava E, Lefeber DJ, Urban Z *et al*: Defining the phenotype in an autosomal recessive cutis laxa syndrome with a combined congenital defect of glycosylation. *Eur J Hum Genet* 2008; **16**: 28–35.
- 15 Mohamed M, Kouwenberg D, Gardeitchik T, Kornak U, Wevers RA, Morava E: Metabolic cutis laxa syndromes. *J Inher Metab Dis* 2011; **34**: 907–916.
- 16 Van Maldergem L, Yuksel-Apak M, Kayserili H *et al*: Cobblestone-like brain dysgenesis and altered glycosylation in congenital cutis laxa, Debre type. *Neurology* 2008; **71**: 1602–1608.
- 17 Guernsey DL, Jiang H, Evans SC *et al*: Mutation in pyrroline-5-carboxylate reductase 1 gene in families with cutis laxa type 2. *Am J Hum Genet* 2009; **85**: 120–129.
- 18 Reversade B, Escande-Beillard N, Dimopoulou A *et al*: Mutations in *PYCR1* cause cutis laxa with progeroid features. *Nat Genet* 2009; **41**: 1016–1021.

- 19 Kretz R, Bozorgmehr B, Kariminejad MH *et al*: Defect in proline synthesis: pyrroline-5-carboxylate reductase 1 deficiency leads to a complex clinical phenotype with collagen and elastin abnormalities. *J Inherit Metab Dis* 2011; **34**: 731–739.
- 20 Yildirim Y, Tolun A, Tuysuz B: The phenotype caused by PYCR1 mutations corresponds to geroderma osteodysplasticum rather than autosomal recessive cutis laxa type 2. *Am J Med Genet Pt A* 2011; **155A**: 134–140.
- 21 Bicknell LS, Pitt J, Affimos S, Ramadas R, Maw MA, Robertson SP: A missense mutation in ALDH18A1, encoding Delta1-pyrroline-5-carboxylate synthase (P5CS), causes an autosomal recessive neurocutaneous syndrome. *Eur J Hum Genet* 2008; **16**: 1176–1186.
- 22 Baumgartner MR, Hu CA, Almashanu S *et al*: Hyperammonemia with reduced ornithine, citrulline, arginine and proline: a new inborn error caused by a mutation in the gene encoding delta(1)-pyrroline-5-carboxylate synthase. *Hum Mol Genet* 2000; **9**: 2853–2858.
- 23 de Bary AM, Moens E, Dierckx L: Dwarfism, oligophrenia and degeneration of the elastic tissue in skin and cornea. A new syndrome? *Helvetica Paediatrica Acta* 1968; **23**: 305–313.
- 24 Kivuva EC, Parker MJ, Cohen MC, Wagner BE, Sobey G: De Bary syndrome: a review of the phenotype. *Clin Dysmorphol* 2008; **17**: 99–107.
- 25 Hennies HC, Kornak U, Zhang H *et al*: Geroderma osteodysplastica is caused by mutations in SCYL1BP1, a Rab-6 interacting golgin. *Nat Genet* 2008; **40**: 1410–1412.
- 26 Basel-Vanagaite L, Sarig O, Hershkovitz D *et al*: RIN2 deficiency results in macrocephaly, alopecia, cutis laxa, and scoliosis: MACS syndrome. *Am J Hum Genet* 2009; **85**: 254–263.
- 27 Albrecht B, de Brouwer AP, Lefeber DJ *et al*: MACS syndrome: a combined collagen and elastin disorder due to abnormal Golgi trafficking. *Am J Med Genet Pt A* 2010; **152A**: 2916–2918.
- 28 Syx D, Malfait F, Van Laer L *et al*: The RIN2 syndrome: a new autosomal recessive connective tissue disorder caused by deficiency of Ras and Rab interactor 2 (RIN2). *Hum Genet* 2010; **128**: 79–88.
- 29 Kleefstra T, Wortmann SB, Rodenburg RJ *et al*: Mitochondrial dysfunction and organic aciduria in five patients carrying mutations in the Ras-MAPK pathway. *Eur J Hum Genet* 2011; **19**: 138–144.
- 30 Berk DR, Bentley DD, Bayliss SJ, Lind A, Urban Z: Cutis laxa: a review. *J Am Acad Dermatol* 2012; **66**: 842 e841–817.
- 31 Brunetti-Pierri N, Piccolo P, Morava E *et al*: Cutis laxa and fatal pulmonary hypertension: a newly recognized syndrome? *Clin Dysmorphol* 2011; **20**: 77–81.
- 32 Gardeitchik T, de Leeuw N, Nijtmans L *et al*: Infant with MCA and severe cutis laxa due to a *de novo* duplication 11p of paternal origin. *Am J Med Genet Pt A* 2012; **158A**: 469–472.
- 33 Cordeddu V, Di Schiavi E, Pennacchio LA *et al*: Mutation of SHOC2 promotes aberrant protein N-myristoylation and causes Noonan-like syndrome with loose anagen hair. *Nat Genet* 2009; **41**: 1022–1026.
- 34 van Eijk HG, van Noort WL: The analysis of human serum transferrins with the PhastSystem: quantitation of microheterogeneity. *Electrophoresis* 1992; **13**: 354–358.
- 35 Wopereis S, Grunewald S, Morava E *et al*: Apolipoprotein C-III isofocusing in the diagnosis of genetic defects in O-glycan biosynthesis. *Clin Chem* 2003; **49**: 1839–1845.
- 36 Miller SA, Dykes DD, Polesky HF: A simple salting out procedure for extracting DNA from human nucleated cells. *Nucleic Acids Res* 1988; **16**: 1215.
- 37 Hyvola N, Diao A, McKenzie E, Skippen A, Cockcroft S, Lowe M: Membrane targeting and activation of the Lowe syndrome protein OCRL1 by rab GTPases. *EMBO J* 2006; **25**: 3750–3761.
- 38 Zampatti S, Castori M, Fischer B *et al*: De Bary syndrome: a genetically heterogeneous autosomal recessive cutis laxa syndrome related to P5CS and PYCR1 dysfunction. *Am J Med Genet Pt A* 2012; **158A**: 927–931.
- 39 Kouwenberg D, Gardeitchik T, Wevers RA, Häberle J, Morava E: Recognizable phenotype with common occurrence of microcephaly, psychomotor retardation, but no spontaneous bone fractures in autosomal recessive cutis laxa type IIB due to PYCR1 mutations. *Am J Med Genet Pt A* 2011; **155A**: 2331–2332.
- 40 Lin DS, Chang JH, Liu HL *et al*: Compound heterozygous mutations in PYCR1 further expand the phenotypic spectrum of De Bary syndrome. *Am J Med Genet Pt A* 2011; **155A**: 3095–3099.
- 41 Lin DS, Chang JH, Liu HL *et al*: A novel mutation in PYCR1 causes an autosomal recessive cutis laxa with premature aging features in a family. *Am J Med Genet Pt A* 2011; **155A**: 1285–1289.
- 42 Skidmore DL, Chitayat D, Morgan T *et al*: Further expansion of the phenotypic spectrum associated with mutations in ALDH18A1, encoding Δ^1 -pyrroline-5-carboxylate synthase (P5CS). *Am J Med Genet Pt A* 2011; **155A**: 1848–1856.
- 43 Martinelli D *et al*: Understanding pyrroline-5-carboxylate synthetase deficiency: clinical, molecular, functional, and expression studies, structure-based analysis, and novel therapy with arginine. *J Inherit Metab Dis* 2012; **35**: 761–776.
- 44 Fischer B, Dimopoulou A, Egerer J *et al*: Further characterization of ATP6VOA2-related autosomal recessive cutis laxa. *Hum Genet* 2012; **131**: 1761–1773.

Supplementary Information accompanies this paper on European Journal of Human Genetics website (<http://www.nature.com/ejhg>)