

Selenoprotein expression is regulated at multiple levels in prostate cells

Cheryl M Rebsch, Frank J Penna III, Paul R Copeland

Cell Research (2007) 17:272. doi:10.1038/cr.2007.9; published online 15 March 2007

Correction to: (2007) 16: doi: 10.1038/sj.cr.7310117; published online 12 December 2006

Due to a production error, some mistakes have been introduced in labels of Figure 1C, Figure 2C, and Figure 4B. The corrected version are shown below.

Figure 1C

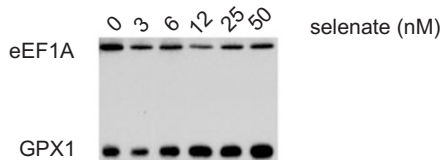


Figure 2B

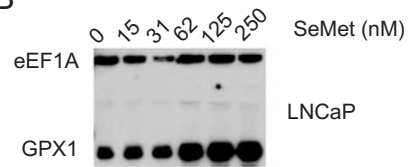


Figure 4B

