

RESEARCH ARTICLE

Liver-infiltrating CD11b⁺CD27⁺ NK subsets account for NK-cell dysfunction in patients with hepatocellular carcinoma and are associated with tumor progression

Qiong-Fang Zhang¹, Wen-Wei Yin¹, Yang Xia², Ya-Yang Yi³, Qiu-Feng He¹, Xing Wang⁴, Hong Ren¹ and Da-Zhi Zhang¹

Natural killer (NK) cells have a vital role in killing hepatocellular carcinoma (HCC) cells; however, the mechanism underlying tumor-infiltrating NK (TINK)-cell dysfunction remains poorly understood. Using flow cytometry staining, we precisely characterized the frequency, phenotype and function of NK subsets distinguished by CD27 and CD11b in 30 patients with HCC in comparison to 30 healthy controls. Interestingly, we found a substantial proportion of liver-infiltrating CD11b⁺CD27⁺ (DN) NK subsets in tumor tissue from HCC patients. Remarkably, these relatively expanded DN NK subsets exhibited an inactive and immature phenotype. By detecting the expression of CD107a and interferon-gamma (IFN- γ) on NK subsets and NK cells, we demonstrated that DN NK subsets exhibited a poor cytotoxic capacity and deficient potential to produce IFN- γ in comparison to the other three subsets, which contributed to the dysfunction of TINK cells in HCC patients. In addition, we found that the presence of DN NK cells was closely associated with the clinical outcomes of HCC patients, as the frequency of DN NK cells among TINK cells was positively correlated with tumor stage and size. A large percentage of DN NK cells among TINK cells was an independent prognostic factor for lower survival in the 60-month follow-up period. In conclusion, a substantial proportion of CD11b⁺CD27⁺ NK subsets among TINK cells accounts for NK-cell dysfunction in patients with HCC and is associated with tumor progression. Our study may provide a novel therapeutic target for the treatment of patients with HCC.

Cellular & Molecular Immunology (2017) **14**, 819–829; doi:10.1038/cmi.2016.28; published online 20 June 2016

Keywords: CD11b; CD27; dysfunction; NK; subsets

INTRODUCTION

Patients infected with hepatitis B (HBV) or hepatitis C virus have a higher risk of developing hepatocellular carcinoma (HCC), and chronic HBV infection accounts for over 85% of HCC cases in China.¹ HCC is currently the leading cause of cancer-related deaths worldwide.^{2,3} Although surgery that includes liver resection and transplantation is the most effective treatment for HCC patients, the recurrence and exacerbation of HCC after surgery remain serious issues.^{4,5} To apply novel and efficacious therapies, including immunotherapies, a comprehensive understanding of anti-tumor immune responses is essential.

Natural killer (NK) cells display at least two effector functions against neoplastic cells: they can mediate direct cytotoxic activity through degranulation and they are also able to produce a variety of anti-tumor active and immunoregulatory cytokines, such as interferon-gamma (IFN- γ).⁶ Studies have reported a key role for NK cells in the destruction of multiple tumor cell lines derived from human tumors.^{7–10} However, clinical evidence that NK cells can control tumors in humans remains limited because tumor-infiltrating NK (TINK) cells display functional impairments that contribute to the escape of tumor cells from NK-cell attack.^{11,12} It is likely

¹Key Laboratory of Molecular Biology for Infectious Diseases (Ministry of Education), Institute for Viral Hepatitis, Department of Infectious Diseases, The Second Affiliated Hospital, Chongqing Medical University, Chongqing 400016, PR China; ²Department of Urinary Surgery, The First Affiliated Hospital of Chongqing Medical University, Chongqing 400016, PR China; ³Department of Hepatobiliary Surgery, The First Affiliated Hospital of Chongqing Medical University, Chongqing 400016, PR China and ⁴Department of Orthopaedics Surgery, The Second Affiliated Hospital of Chongqing Medical University, Chongqing 400010, PR China
Correspondence: Professor D-Z Zhang, PhD, Key Laboratory of Molecular Biology for Infectious Diseases (Ministry of Education), Institute for Viral Hepatitis, Department of Infectious Diseases, The Second Affiliated Hospital of Chongqing Medical University, NO76, Lin Jiang Road, Yu Zhong District, Chongqing 400010, PR China.
E-mail: zhangdazhi_1014@163.com

Received: 17 December 2015; Revised: 25 April 2016; Accepted: 25 April 2016

that the molecular and cellular mechanisms underlying NK-cell dysfunction in HCC have not been defined.

As the first defense of the host immune system against tumors,¹³ NK cells account for a large proportion of cells in the liver, with a percentage nearly five times greater than the percentage observed in the blood or spleen.^{14–17} Human NK cells undergo four differentiation stages with respect to the cell-surface density of CD34, CD117 and CD94.^{18,19} NK cells are typically defined as CD56⁺CD3[−] large granular lymphocytes, and the CD56 marker is highly expressed only during stage 4 (CD34[−]CD117[−]CD94^{−/+}).¹⁸ Therefore, the heterogeneity of NK cells during stage 4 has attracted significant attention. On the basis of the expression levels of CD56, human NK cells can traditionally be divided into two main subsets: CD56^{bright} NK cells in the lymphoid organs and CD56^{dim} NK cells, found predominantly in the peripheral blood. CD56^{bright} NK cells perform predominantly immunoregulatory functions that are mediated by their potent cytokine secretion ability, whereas CD56^{dim} NK cells have a marked cytotoxic function.^{20,21} CD57 was reported to distinguish functionally mature NK subsets of human CD56^{dim}CD16⁺ NK cells.²² Another study demonstrated that the expression of CD94 can differentiate between functional intermediary subsets of CD56^{bright} and CD56^{dim} human NK subpopulations.²³ Furthermore, the Tim-3 protein has a negative role in NK-cell maturation and suppresses cell-mediated cytotoxicity.²⁴ Despite our knowledge of these two subsets, little evidence is available concerning the discrete stages that represent human NK subsets with respect to both maturation and functional divisions. Thus, much effort has recently been devoted to subdividing human NK cells into functionally distinct subpopulations. On the basis of global gene profiles and adoptive transfers of NK subsets, murine NK cells are reported to undergo a four-stage developmental process.^{25,26} Resembling the subsets in mice, human NK cells have been further divided into four functionally distinct subsets based on the surface density of CD27 and CD11b: CD11b[−]CD27[−] (DN), CD11b[−]CD27⁺ (CD27⁺ SP), CD11b⁺CD27⁺ (DP) and CD11b⁺CD27[−] (CD11b⁺ SP).²⁷ The specific micro-environment and complex cellular interactions provide crucial signals for modifying the features of NK cells.^{28,29} To investigate whether the NK subsets distinguished by CD27 and CD11b were shaped in the HCC microenvironment and

contributed to tumor progression, we precisely characterized the frequency, phenotypes and functions of NK subsets in HCC patients. We provide evidence that DN NK cells preferentially accumulate in tumor tissue. Consistent with an inactive and immature phenotype, these DN NK subsets display poor cytotoxic capacity and an impaired ability to produce cytokines. Moreover, the substantial presence of DN NK cells contributes to NK-cell dysfunction in patients with HCC and is associated with tumor progression. Importantly, we demonstrate an innovative mechanism that underlies the escape of tumor cells from NK-cell attack and is mediated by DN NK cells during anti-tumor immune responses.

MATERIALS AND METHODS

Patients

Peripheral blood and tumor tissue were collected from the Department of Hepatobiliary Surgery at the First Affiliated Hospital of Chongqing Medical University. HCC patients were diagnosed according to the diagnostic guidelines of the European Association for the Study of the Liver.^{30–32} Thirty patients with HBV-related HCC were enrolled in this study, none of whom received chemotherapy or radiotherapy. On the basis of the Barcelona Clinic Liver Cancer (BCLC) staging classification,³³ 10 patients were classified as stage A, 10 as stage B and 10 as stage C. Detailed patient characteristics are shown in Table 1. Fresh tumor tissues, paired adjacent non-tumor liver tissues (at least 5 cm from the tumor margin) and peripheral blood samples from these 30 patients were used for further determinations. As controls, 12 liver tissue samples were obtained from patients with benign hepatic hemangioma, and peripheral blood samples were obtained from 30 healthy individuals. For survival analysis, 30 HCC patients who had undergone surgical resection were studied from 2010 to 2015. All samples were collected after obtaining written informed consent from the donors and following approval by the Hospital Ethic Review Committee of the First Affiliated Hospital of Chongqing Medical University.

Isolation of lymphocytes from samples

Freshly dissected tumor and non-tumor tissues were disrupted mechanically and then digested with 0.1% collagenase type IV (Sigma-Aldrich, St. Louis, MO, USA) in serum-free RPMI 1640 for 1 h under agitation. After enzymatic digestion, the single-cell

Table 1 Basic clinical features of 30 HCC patients

| Clinical factors | Stage A | Stage B | Stage C |
|-------------------------------------------------------|--------------|----------------|---------------|
| Cases | 10 | 10 | 10 |
| Ages (years) | 26.5 (33–51) | 45 (30–55) | 48 (35–55) |
| Male/female | 7/3 | 8/2 | 8/2 |
| Tumor diameter (mm) | 25 (21–30) | 40 (34–45) | 64 (47–78) |
| HBV-DNA (−/ <10 ⁵ /≥10 ⁵ IU/ml) | 5/2/3 | 5/3/2 | 6/3/1 |
| AFP (ng/ml) | 368 (0–574) | 789 (508–1213) | 696 (475–819) |
| Child-Pugh (A/B) | 7/3 | 7/3 | 6/4 |

Abbreviation: AFP, α-fetoprotein.

suspensions were filtered and washed, and mononuclear cells (MNCs) were purified. Using Ficoll-Hypaque density-gradient centrifugation, tumor-infiltrating lymphocytes (TILs), non-tumor-infiltrating lymphocytes (NILs), and peripheral blood mononuclear cells (PBMCs) were isolated.

Flow cytometric analysis

Lymphocytes from human blood/tumor samples were incubated for 30 min with the following mouse anti-human monoclonal antibodies: anti-CD45, anti-CD11b and anti-NKp80 (Biolegend, San Diego, CA, USA); anti-CD3, anti-CD56, anti-CD27, anti-CD7, anti-CD2, anti-CD57, anti-CD11c, anti-CD117 and anti-CD127 (eBioscience, San Diego, CA, USA); anti-NKG2D, anti-NKp30, anti-CD226 and anti-NKp46 (BD Bioscience, San Jose, CA, USA); anti-NKG2A (R&D Systems Inc, Minneapolis, MN, USA); and KIR2DL1/DS1, KIR2DL2/DL3/DS2, and KIR3DL1/DS1 (Beckman Coulter, Fullerton, CA, USA). Mouse serum was used to block non-specific Fc receptor binding, and isotype-matched IgGs were used as negative control antibodies. The samples were analyzed using a fluorescence activating cell sorter Calibur flow cytometer (BD Biosciences). Flow cytometry data were analyzed using the FlowJo software (Tree Star, Inc., Ashland, OR, USA).

Degranulation assay

The CD107a degranulation assay was performed as an indirect measure of cytotoxicity, as this assay is now widely used to assess the cytotoxic potential of CD8 T cells and NK cells.^{34,35} Lymphocytes from human tumor samples were stimulated with PMA (phorbol 12-myristate 13-acetate) (50 ng/ml, Sigma) and ionomycin (1 µg/ml; Calbiochem, Darmstadt, Germany) for 1 h. Anti-CD107a (eBioscience) and monensin (10 µg/ml; Sigma) were added directly to the medium and incubated for 4 h. The cells were then collected and stained with surface antibodies.

IFN-γ detection

After stimulation with 50 ng/ml of PMA (Sigma) plus 1 µg/ml of ionomycin (Calbiochem, Darmstadt, Germany) for 1 h at 37 °C in 5% CO₂, the cells were cultured with 10 µg/ml of monensin (Sigma) for 4 h. After staining with surface antibodies, the cells were fixed and permeabilized, followed by intracellular staining for IFN-γ (eBioscience) in the dark. Finally, the cells were detected by flow cytometry.

Statistical analysis

Statistical significance was tested using the Mann–Whitney test and the Kruskal–Wallis ANOVA for non-parametric continuous data. Correlations between variables were analyzed using the Spearman's correlation coefficient (*r*). Overall survival (OS) curves were estimated using the Kaplan–Meier method, and differences between groups of patients were evaluated using the log-rank test with a minimal *P*-value. Calculations were performed using GraphPad Prism version 5.00 (GraphPad Software, Inc., San Diego, CA, USA).

RESULTS

NK cells accumulate in tumor tissue

We first detected the distribution of NK cells in liver-infiltrating lymphocytes (LILs) from controls and HCC patients via flow cytometry staining. The gating strategy for LILs is described in Figure 1a. A substantial population of NK cells was observed among LILs from HCC patients, particularly among TILs, in comparison to lymphocytes from control livers (Figure 1b). No difference in the frequency of circulating NK cells was observed between HCs and HCC patients (Figure 1c). These results indicate that a large population of NK cells accumulates in the tumor tissue of HCC patients.

DN NK cells preferentially accumulate among TINK cells

To further determine the impact of HCC on NK subsets, we compared the frequency of NK subsets distinguished by CD11b and CD27 between controls and HCC patients. In comparison with adjacent non-tumor tissue and control livers, the percentage of liver-infiltrating DN NK cells from tumor tissue was increased significantly, whereas the percentages of liver-infiltrating CD11b⁺SP and DP NK subsets were markedly decreased (Figures 2a and c). No significant alteration of NK subsets in the peripheral blood was observed between HCs and HCC patients (Figures 2b and d). These data demonstrate for the first time that liver-infiltrating DN NK cells expand among TINK cells from HCC patients.

DN NK cells exhibit an inactive and immature phenotype

We further analyzed the phenotypic characteristics of the four NK subsets from tumor tissue. As illustrated in Figures 3a–f, the expression of activating receptors (NKG2D, NKp30 and CD226) and inhibitory receptors (NKG2A, KIR2DL2/DL3/DS2 and KIR3DL1/DS1) among DN NK subsets was downregulated compared to that of the other three subsets, especially the CD11b⁺SP populations. In addition, the downregulation of CD2, CD7, CD57 and CD11c, which were expressed on highly mature NK cells, was observed on DN NK cells compared to the other three subsets (Figures 4a–d). In addition, the upregulation of CD117 and CD127, which are typically expressed on immature NK cells, was observed on DN NK cells compared to the other three subsets (Figures 4e and f). Hence, the DN NK subsets within tumor tissue exhibit an inactive and immature phenotype, suggesting an impaired function of these subsets.

DN NK cells account for the dysfunction of TINK cells

To investigate the functional characteristics of NK cells in HCC patients, we analyzed the expression of CD107a and INF-γ in response to PMA/ionomycin stimulation. Notably, NK cells from TILs displayed poor cytotoxic capacity and deficient potential to produce IFN-γ compared to NK cells from control liver-infiltrating lymphocytes or NILs (Figures 5a and b). To determine whether the dysfunction of TINK cells was attributable to the expansion of DN NK subsets among TINK cells, we assessed degranulation and cytokine production in NK subsets from TINK cells. Consistent with the observed

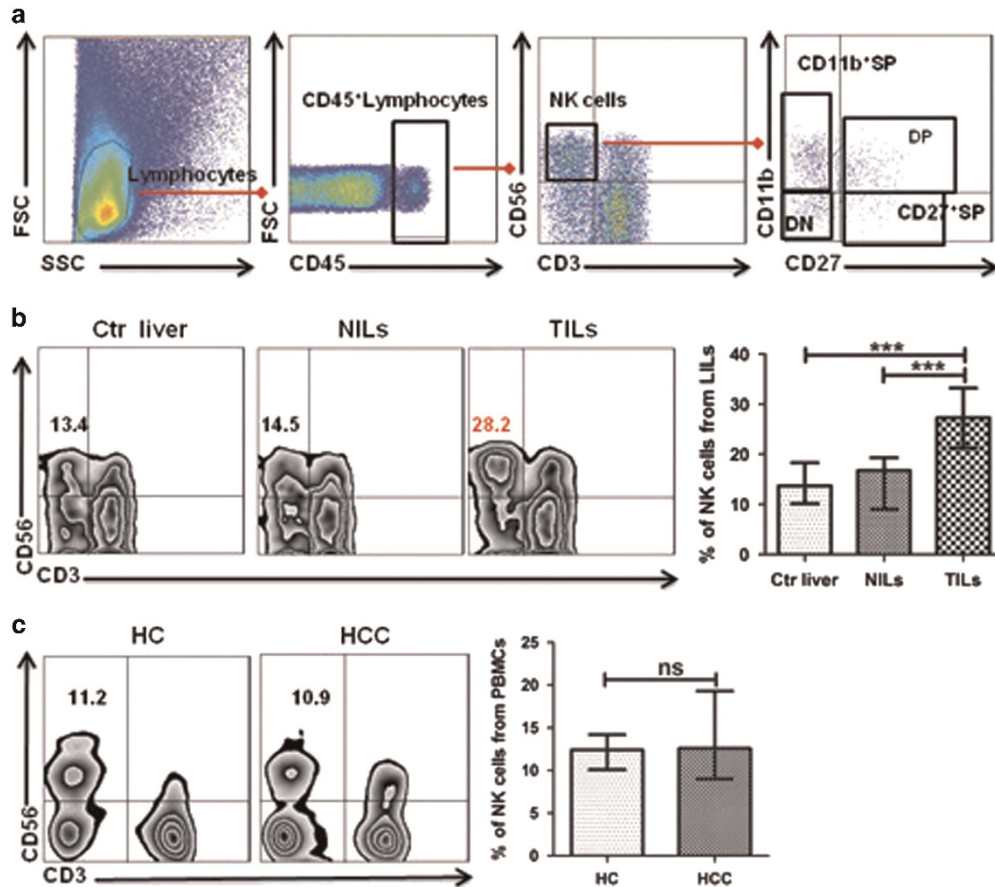


Figure 1 NK cells accumulate in tumor tissue. (a) Within the lymphocyte gate of freshly purified MNCs initially stained with CD45, CD56⁺ CD3⁻ NK cells were separated and characterized for CD11b and CD27 expression. (b) Percentages of NK cells among LILs from control liver tissue (Ctr liver, $n=12$), adjacent non-tumorous tissue (NILs, $n=30$), and tumorous tissue ($n=30$, median \pm range). (c) Percentages of NK cells among PBMCs from healthy individuals (HCs, $n=30$) and patients with HCC (HCC, $n=30$, median \pm range). (The results were analyzed using the Mann–Whitney U and the Kruskal–Wallis ANOVA tests. Significance was denoted as * $P<0.05$, ** $P<0.01$ and *** $P<0.001$.) HC, healthy control; HCC, hepatocellular carcinoma; LILs, liver-infiltrating lymphocytes; MNC, mononuclear cells; NILs, non-tumor-infiltrating lymphocytes; NK, natural killer; PBMCs, peripheral blood mononuclear cells.

phenotypic attributes, DN NK cells exhibited significantly reduced levels of CD107a expression and IFN- γ production in comparison to the other three subsets (Figures 5c and d). In addition, the percentages of DN NK subsets expressing CD107a and IFN- γ within TINK cells were positively correlated with TINK degranulation and cytokine production, respectively (Figures 5e and f). Collectively, the substantial presence of DN NK subsets among TINK cells with deficient function contributes to the dysfunction of TINK cells in HCC patients.

The appearance of DN NK cells is associated with tumor progression in HCC patients

To determine the functional role of DN NK cells among TINK cells in HCC, we evaluated the influence of DN NK cells on clinical outcomes. In this study, the HCC patients were divided into stage A, stage B and stage C groups based on the BCLC staging classification. The clinical information for the HCC patients in our study is presented in Table 1. Remarkably, the frequency of DN NK cells among TINK cells increased as the tumors progressed, as illustrated in Figure 6a. We next

investigated the relationship between the frequency of DN NK cells and the size of the tumors. As expected, a positive correlation was observed between the frequency of DN NK cells among TINK cells and the maximum diameter of the resected tumors (Figure 6b). We also investigated the OS curve using the Kaplan–Meier method. Furthermore, the included patients were divided into three groups (low, median and high DN NK%) with respect to the frequency of DN NK cells. Analysis of the Kaplan–Meier survival curve revealed significant differences among the three groups during the 60-month follow-up period (Figure 6c). Thus, these observations suggest that the substantial presence of DN NK cells is closely associated with tumor progression.

DISCUSSION

NK cells are vital elements in defense against HCC, and NK-cell-based anti-HCC therapeutic strategies are becoming increasingly attractive.^{36–38} One striking dilemma with anti-tumor immunotherapies is that tumor cells use multiple strategies to evade NK-cell attack, leading to NK-cell

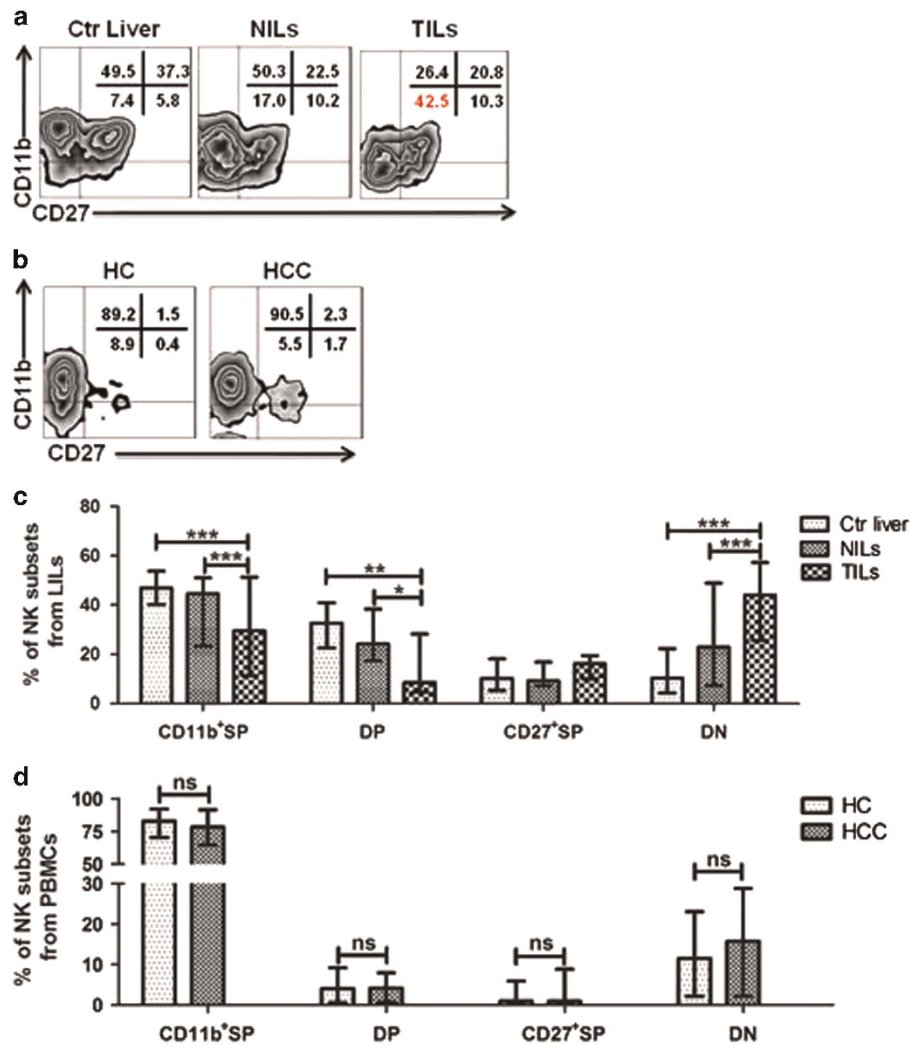


Figure 2 DN NK cells preferentially accumulate among TINK cells. Percentages of the four NK subsets among LILs (a) and PBMCs (b) isolated from controls ($n=12$ and 30 , respectively) and patients with HCC ($n=30$ and 30 , respectively, median \pm range). Pooled percentages of the four NK subsets among LILs (c) and PBMCs (d) isolated from controls and patients with HCC. (The results were analyzed using the Mann-Whitney U and the Kruskal-Wallis ANOVA tests. Significance was denoted as * $P<0.05$, ** $P<0.01$ and *** $P<0.001$.) HCC, hepatocellular carcinoma; LILs, liver-infiltrating lymphocytes; NK, natural killer; PBMCs, peripheral blood mononuclear cells; TINK, tumor-infiltrating NK.

dysfunction.^{39–41} However, the exact mechanism underlying NK-cell dysfunction in patients with HCC remains incompletely defined.

Some documents have demonstrated that the NK-cell developmental program is not fully fixed. In addition, tumor microenvironments can drive the accumulation of abnormal NK-cell subsets, which account for a small population in healthy controls and a large population in individuals with tumors.^{39,42} Interestingly, we found that DN NK cells accumulate in tumor tissue in HCC patients but account for only a small population in adjacent non-tumor or control liver tissue. An investigation of markers of mature and immature NK subsets revealed that the DN NK subsets showed an immature phenotype. When considering the mechanism that underlies the phenotypic alteration of TINK cells, we hypothesize that

IL-10 or transforming growth factor- β (TGF- β) may have an important role in altering the NK phenotype. It is well documented that tumor cells suppress immune surveillance by secreting immunosuppressive cytokines, such as IL-10 and TGF- β , to evade the anti-tumor immune response.^{43,44} IL-10 impairs dendritic cell maturation on PAX3-FKHR-expressing tumor cells,⁴⁵ and tumor cells negatively regulate NK-cell function by releasing the immunosuppressive factor TGF- β in non-small cell lung carcinoma patients.⁴⁶ Thus, IL-10 or TGF- β may also be a crucial element in the abnormal phenotypic alteration of NK cells in HCC. We will test this hypothesis in future experiments. Here, we provide evidence that the HCC microenvironment induces the accumulation of immature DN NK subsets, suggesting an impaired function of these DN NK subsets.

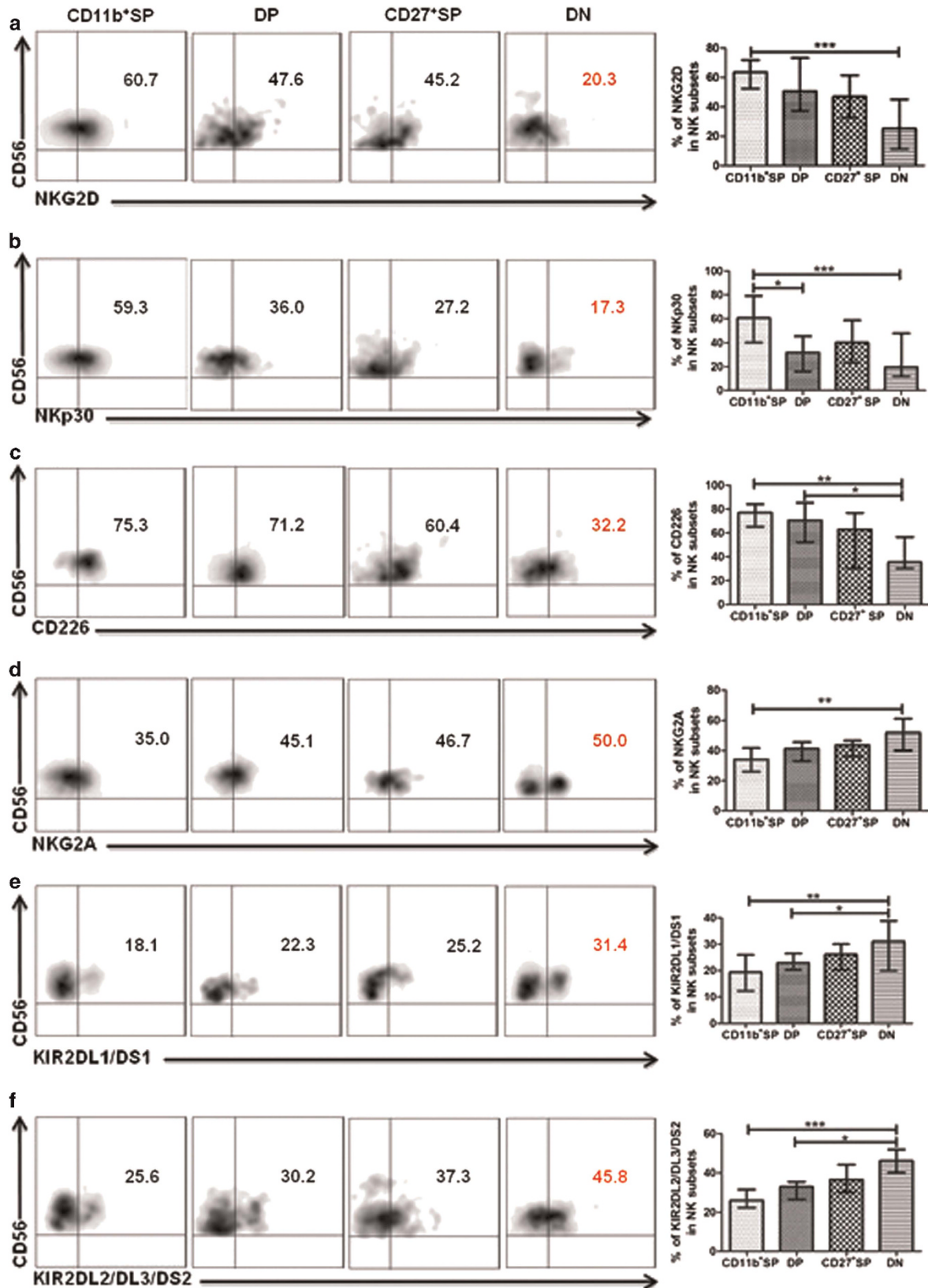


Figure 3 DN NK cells display an inactive phenotype. The percentages of the NK-cell activation receptors NKG2D (a), NKp30 (b), and CD226 (c) and the inhibitory receptors NKG2A (d), KIR2DL2/DL3/DS2 (e) and KIR3DL1/DS1 (f) ($n=30$, median \pm range) expressed on four NK subsets gated from CD56⁺CD3⁻ TINK cells. (The results were analyzed using the Kruskal–Wallis ANOVA test. Significance was denoted as * $P<0.05$, ** $P<0.01$ and *** $P<0.001$). NK, natural killer.

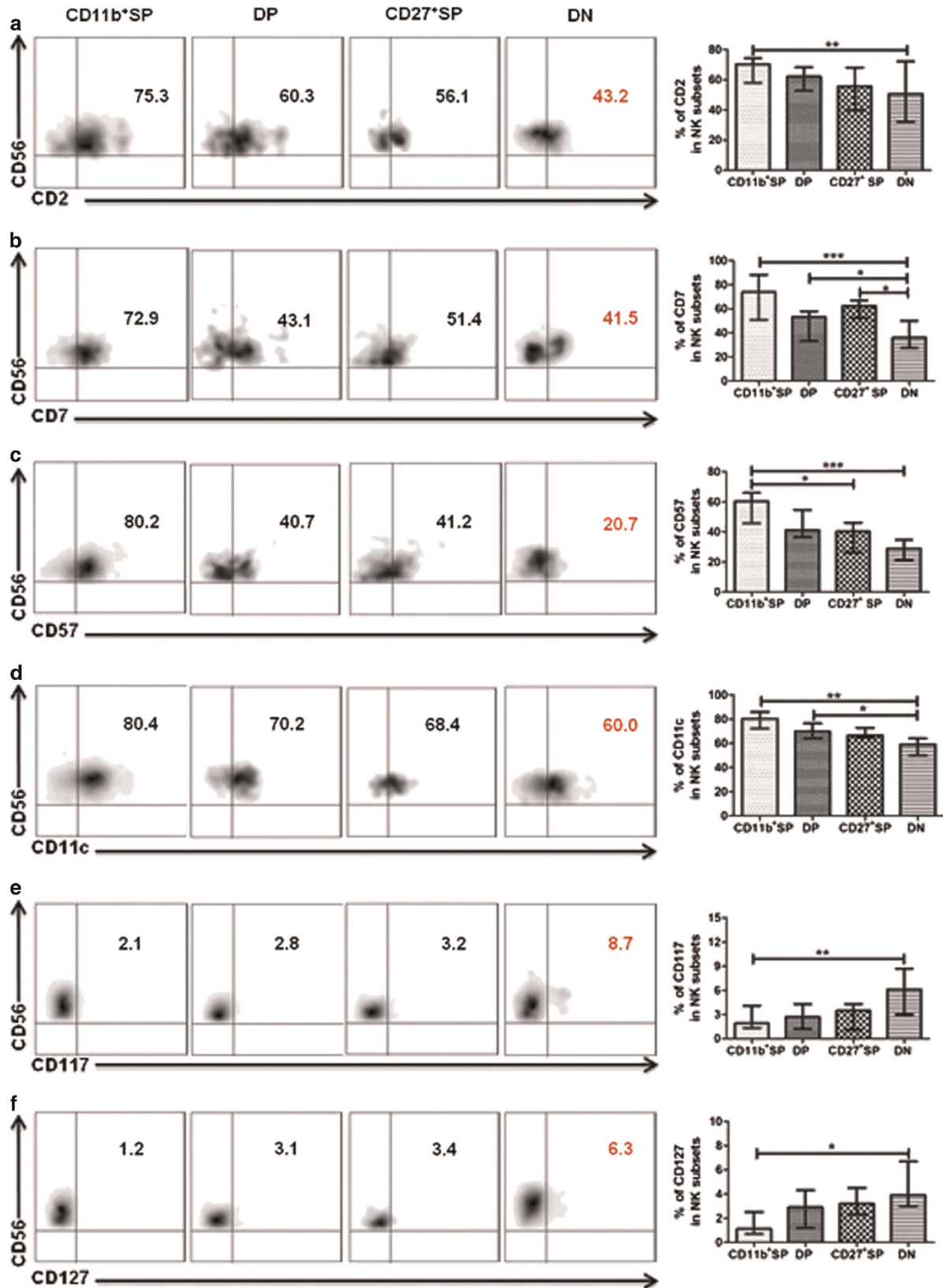


Figure 4 DN NK cells display an immature phenotype. The percentage of the mature NK-cell markers CD2 (a), CD7 (b), CD57 (c) and CD11c (d) and the immature NK-cell markers CD117 (e) and CD127 (f) ($n=30$, median \pm range) expressed on four NK subsets gated from CD56⁺CD3⁻ TINK cells. (The results were analyzed using the Kruskal–Wallis ANOVA test. Significance was denoted as * $P<0.05$, ** $P<0.01$ and *** $P<0.001$). NK, natural killer; TINK, tumor-infiltrating NK.

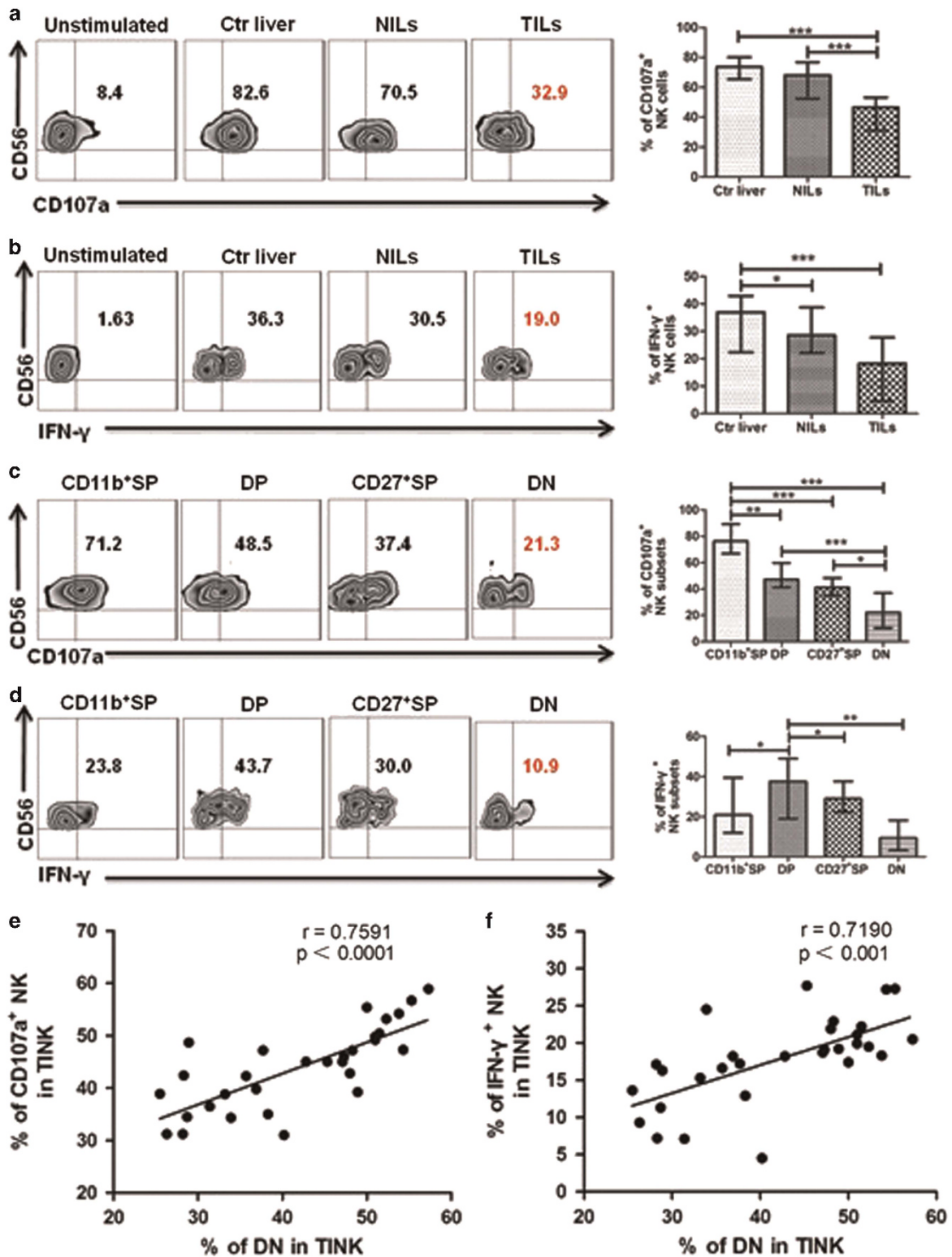


Figure 5 DN NK cells account for the dysfunction of TINK cells. The percentages of CD107a (a) and IFN-γ (b) expression on liver-infiltrating NK cells from control livers ($n=12$) and tissues from patients with HCC ($n=30$, median±range). The percentages of CD107a (c) and IFN-γ (d) expression on the four NK subsets gated from CD56⁺CD3⁺ TINK cells ($n=30$). (e) The percentage of CD107a⁺ DN NK subsets is positively correlated with the expression of CD107a on TINK cells. (f) The percentage of IFN-γ⁺ DN NK subsets is positively correlated with the expression of IFN-γ on TINK cells. (The results were analyzed using the Kruskal–Wallis ANOVA test and the Spearman's rank correlation test. Significance was denoted as * $P<0.05$, ** $P<0.01$ and *** $P<0.001$). HCC, hepatocellular carcinoma; IFN-γ, interferon-gamma; NK, natural killer; TINK, tumor-infiltrating NK.

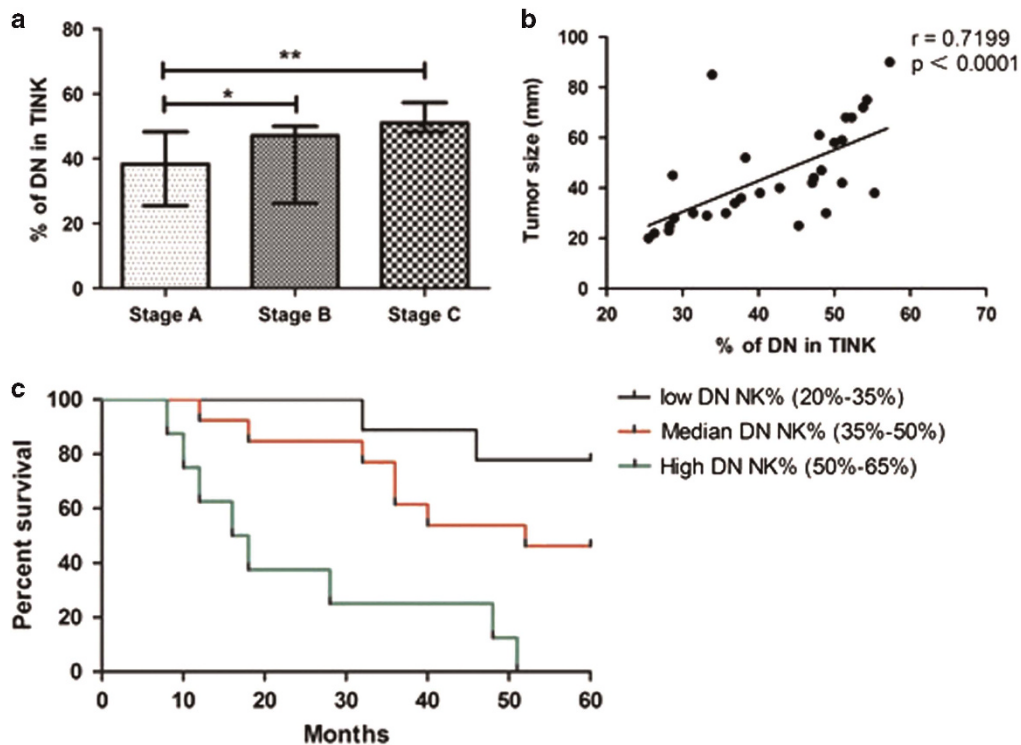


Figure 6 The appearance of DN NK cells is associated with tumor progression in HCC patients. (a) The percentage of DN NK cells within the TINK-cell population increases as the tumors progress ($n=30$). (b) The percentage of DN NK cells among TINK cells is positively correlated with the maximum diameter of the resected tumors. (c) HCC patients in three groups (low, median and high DN NK%) divided based on the frequency of DN NK cells exhibit different survival rates during a follow-up period of 60 months. (The results were analyzed using the Kruskal–Wallis ANOVA test and the Spearman’s rank correlation test. An OS curve was estimated using the Kaplan–Meier’s test. Significance was denoted as $*P<0.05$, $**P<0.01$, $***P<0.001$). HCC, hepatocellular carcinoma; NK, natural killer; OS, overall survival; TINK, tumor-infiltrating NK.

NK cells have the ability to recognize and kill invading pathogens and cancer cells.⁶ This ability of NK cells depends on the delicate balance between activating receptors and inhibiting receptors.⁴⁷ NK cells have a strong cytotoxic capacity against tumor cells, but tumor cells and the tumor microenvironment have developed several mechanisms to induce the dysfunction of NK cells and protect tumor cells from NK-cell-mediated attack.³⁸ Affected by various microenvironments and signals, NK cells can be divided into three functional subsets: NK^{tolerant} (NK cells with dominant inhibitory signals), $NK^{\text{cytotoxic}}$ (NK cells with dominant activating signals, target cells with strong expression of pressure stimulus-induced ligand) and $NK^{\text{regulatory}}$ (NK cells with dominant activating signals, target cells with strong expression of inflammatory molecules). The NK^{tolerant} subsets are primarily DN NK cells.⁴⁸ Our results reveal that the expanded DN NK subsets in tumor tissue from HCC patients exhibit an inactive phenotype, which is consistent with the NK^{tolerant} phenotype. To determine whether the accumulation of DN NK cells had a negative influence on NK function, we also detected the degranulation and IFN- γ secretion among the NK subsets and NK cells in HCC patients. We found that DN NK cells possess reduced cytotoxicity and an impaired capacity to produce IFN- γ . A positive correlation exists between the function of DN NK cells and the function of TINK cells. It is

likely that the accumulation of DN NK subsets within TINK cells contributes to TINK-cell functional deficiency. Our results provide some clues concerning the alteration of NK subsets, phenotypes and functions in the tumor microenvironment. Taken together, the above observations suggest that the tumor microenvironment negatively regulates the cellular phenotype and function of TINK cells by inducing a substantial accumulation of DN subsets. The large population of DN subsets among TINK cells with an immature and inactive phenotype suggests that TINK cells tend to be skewed toward an immature and inactive state. Moreover, the accumulation of DN subsets with a profoundly defective ability to activate degranulation and produce IFN- γ is responsible for the impaired functions of TINK cells, which suppresses their ability to attack tumor cells.

Many novel predictors related to the immune response have been explored recently for potential use in determining the prognosis of patients with tumors. The prognostic value of LILs and cytokines in cirrhotic parenchyma of resected HCC for time to recurrence and survival have also been reported.^{49–51} A high density of $CD8^+$ cells in cirrhotic areas distant from the tumor may be a potential prognostic factor for tumor recurrence in HCC patients after resection.⁵² In our study, we demonstrate that the frequency of DN NK cells among

TINK cells increases as the tumors progress. Moreover, a positive correlation exists between the frequency of DN NK cells among TINK cells and the maximum diameter of the resected tumors. In addition, the HCC patients in three groups (low, median and high DN NK%) displayed significantly different survival rates during a follow-up period of 60 months. These results indicate that liver-infiltrating DN NK subsets in the tumor tissue may be valuable for predicting tumor progress in HCC patients.

In conclusion, the present study has provided new insights into NK-subset immune profiles within HCC patients. To our knowledge, this is the first report that inactive and immature DN NK subsets accumulate in tumor tissue from HCC patients. More importantly, our data provide evidence that expansion of the DN NK population may render TINK cells less tumoricidal and thereby contribute to tumor progression. Thus, the presence of aberrant DN NK subsets within the liver-specific microenvironment may represent a novel therapeutic target for the treatment of HCC patients.

CONFLICT OF INTEREST

The authors declare no conflict of interest.

ACKNOWLEDGEMENTS

This research was supported by the National Natural Science Foundation of China (81171560, 30930082, 81171561 and 30972584), the National Science and Technology Major Project of China (2008ZX10002-006, 2012ZX1002007001, 2011ZX09302005, 2012ZX09303001-001 and 2012ZX10002003), the National High Technology Research and Development Program of China (2011AA020111), the Key Project of the Chongqing Science and Technology Commission (cstc2012ggyjsB10007), the Chongqing Natural Science Foundation (cstc2011jjA10025) and the Medical Research Fund of the Chongqing Municipal Health Bureau (2009-1-71). The funders had no role in the study design, data collection and analysis, the decision to publish or the preparation of the manuscript.

AUTHOR CONTRIBUTIONS

DZZ designed, analyzed and provided overall guidance for the experiments. QFZ designed, performed and analyzed the experiments, and wrote the manuscript. WWY, YX, XW, QFH and YYY performed the experiments. All authors contributed to the experiments.

- 1 El-Serag HB. Hepatocellular carcinoma. *N Engl J Med* 2011; **365**: 1118–1127.
- 2 Aravalli RN, Steer CJ, Cressman EN. Molecular mechanisms of hepatocellular carcinoma. *Hepatology* 2008; **48**: 2047–2063.
- 3 Bruix J, Boix L, Sala M, Llovet JM. Focus on hepatocellular carcinoma. *Cancer Cell* 2004; **5**: 215–219.
- 4 Jemal A, Siegel R, Ward E, Murray T, Xu J, Thun MJ. Cancer statistics, 2007. *Cancer J Clin* 2007; **57**: 43–66.
- 5 Llovet JM, Burroughs A, Bruix J. Hepatocellular carcinoma. *Lancet* 2003; **362**: 1907–1917.
- 6 Screpanti V, Wallin RP, Grandien A, Ljunggren HG. Impact of FASL-induced apoptosis in the elimination of tumor cells by NK cells. *Mol Immunol* 2005; **42**: 495–499.
- 7 Smyth MJ, Hayakawa Y, Takeda K, Yagita H. New aspects of natural-killer-cell surveillance and therapy of cancer. *Nat Rev Cancer* 2002; **2**: 850–861.
- 8 Wu J, Lanier LL. Natural killer cells and cancer. *Adv Cancer Res* 2003; **90**: 127–156.
- 9 Guimaraes F, Guven H, Donati D, Christensson B, Ljunggren HG, Bejarano MT *et al*. Evaluation of ex vivo expanded human NK cells on antileukemia activity in SCID-beige mice. *Leukemia* 2006; **20**: 833–839.
- 10 Miller JS, Soignier Y, Panoskaltsis-Mortari A, McNearney SA, Yun GH, Fautsch SK *et al*. Successful adoptive transfer and *in vivo* expansion of human haploidentical NK cells in patients with cancer. *Blood* 2005; **105**: 3051–3057.
- 11 Villegas FR, Coca S, Villarrubia VG, Jimenez R, Chillon MJ, Jareno J *et al*. Prognostic significance of tumor infiltrating natural killer cells subset CD57 in patients with squamous cell lung cancer. *Lung Cancer* 2002; **35**: 23–28.
- 12 Bruno A, Ferlazzo G, Albini A, Noonan DM. A think tank of TINK/TANKs: tumor-infiltrating/tumor-associated natural killer cells in tumor progression and angiogenesis. *J Natl Cancer Inst* 2014; **106**: dju200.
- 13 Nishida S, Levi DM, Tzakis AG. Liver natural killer cell inoculum for liver transplantation with hepatocellular carcinoma. *Curr Opin Organ Transplant* 2013; **18**: 690–694.
- 14 Li F, Tian Z. The liver works as a school to educate regulatory immune cells. *Cell Mol Immunol* 2013; **10**: 292–302.
- 15 Rehmann B. Pathogenesis of chronic viral hepatitis: differential roles of T cells and NK cells. *Nat Med* 2013; **19**: 859–868.
- 16 Han Q, Zhang C, Zhang J, Tian Z. The role of innate immunity in HBV infection. *Semin Immunopathol* 2013; **35**: 23–38.
- 17 Colucci F, Caligiuri MA, Di Santo JP. What does it take to make a natural killer? *Nat Rev Immunol* 2003; **3**: 413–425.
- 18 Freud AG, Yokohama A, Becknell B, Lee MT, Mao HC, Ferketic AK *et al*. Evidence for discrete stages of human natural killer cell differentiation *in vivo*. *J Exp Med* 2006; **203**: 1033–1043.
- 19 Cooper MA, Fehniger TA, Caligiuri MA. The biology of human natural killer-cell subsets. *Trends Immunol* 2001; **22**: 633–640.
- 20 Fehniger TA, Cooper MA, Nuovo GJ, Cella M, Facchetti F, Colonna M *et al*. CD56bright natural killer cells are present in human lymph nodes and are activated by T cell-derived IL-2: a potential new link between adaptive and innate immunity. *Blood* 2003; **101**: 3052–3057.
- 21 Brodin P, Karre K, Hoglund P. NK cell education: not an on-off switch but a tunable rheostat. *Trends Immunol* 2009; **30**: 143–149.
- 22 Lopez-Vergès S, Milush JM, Pandey S, York VA, Arakawa-Hoyt J, Pircher H *et al*. CD57 defines a functionally distinct population of mature NK cells in the human CD56dimCD16+ NK-cell subset. *Blood* 2010; **116**: 3865–3874.
- 23 Yu J, Mao HC, Wei M, Hughes T, Zhang J, Park I-K *et al*. CD94 surface density identifies a functional intermediary between the CD56bright and CD56dim human NK-cell subsets. *Blood* 2010; **115**: 274–281.
- 24 Ndhlovu LC, Lopez-Vergès S, Barbour JD, Jones RB, Jha AR, Long BR *et al*. Tim-3 marks human natural killer cell maturation and suppresses cell-mediated cytotoxicity. *Blood* 2012; **119**: 3734–3743.
- 25 Chiossone L, Chaix J, Fuseri N, Roth C, Vivier E, Walzer T. Maturation of mouse NK cells is a 4-stage developmental program. *Blood* 2009; **113**: 5488–5496.
- 26 Hayakawa Y, Huntington ND, Nutt SL, Smyth MJ. Functional subsets of mouse natural killer cells. *Immunol Rev* 2006; **214**: 47–55.
- 27 Fu B, Wang F, Sun R, Ling B, Tian Z, Wei H. CD11b and CD27 reflect distinct population and functional specialization in human natural killer cells. *Immunology* 2011; **133**: 350–359.
- 28 Mamessier E, Sylvain A, Thibault ML, Houvenaeghel G, Jacquemier J, Castellano R *et al*. Human breast cancer cells enhance self tolerance by promoting evasion from NK cell antitumor immunity. *J Clin Invest* 2011; **121**: 3609–3622.
- 29 Mavilio D, Lombardo G, Benjamin J, Kim D, Follman D, Marcenaro E *et al*. Characterization of CD56-/CD16+ natural killer (NK) cells: a highly dysfunctional NK subset expanded in HIV-infected viremic individuals. *Proc Natl Acad Sci U S A* 2005; **102**: 2886–2891.
- 30 Song, do S, Bae SH. Changes of guidelines diagnosing hepatocellular carcinoma during the last ten-year period. *Clin Mol Hepatol* 2012; **18**: 258–267.

- 31 Manini MA, Sangiovanni A, Fornari F, Piscaglia F, Biolato M, Fanigliulo L *et al*. Clinical and economical impact of 2010 AASLD guidelines for the diagnosis of hepatocellular carcinoma. *J Hepatol* 2014; **60**: 995–1001.
- 32 Bruix J, Sherman M. Management of hepatocellular carcinoma: an update. *Hepatology* 2011; **53**: 1020–1022.
- 33 Llovet JM, Bru C, Bruix J. Prognosis of hepatocellular carcinoma: the BCLC staging classification. *Semin Liver Dis* 1999; **19**: 329–338.
- 34 Rehmann B, Naoumov NV. Immunological techniques in viral hepatitis. *J Hepatol* 2007; **46**: 508–520.
- 35 Betts MR, Brenchley JM, Price DA, De Rosa SC, Douek DC, Roederer M *et al*. Sensitive and viable identification of antigen-specific CD8⁺ T cells by a flow cytometric assay for degranulation. *J Immunol Methods* 2003; **281**: 65–78.
- 36 Cheung PF, Yip CW, Ng LW, Wong CK, Cheung TT, Lo CM *et al*. Restoration of natural killer activity in hepatocellular carcinoma by treatment with antibody against granulin-epithelin precursor. *Oncotarget* 2015; **4**: e1016706.
- 37 Zhou Z, Yu X, Zhang J, Tian Z, Zhang C. TLR7/8 agonists promote NK-DC cross-talk to enhance NK cell anti-tumor effects in hepatocellular carcinoma. *Cancer Lett* 2015; **369**: 298–306.
- 38 Sun C, Sun HY, Xiao WH, Zhang C, Tian ZG. Natural killer cell dysfunction in hepatocellular carcinoma and NK cell-based immunotherapy. *Acta Pharmacol Sin* 2015; **36**: 1191–1199.
- 39 Sun C, Sun H, Zhang C, Tian Z. NK cell receptor imbalance and NK cell dysfunction in HBV infection and hepatocellular carcinoma. *Cell Mol Immunol* 2015; **12**: 292–302.
- 40 Zhang P, Lu X, Tao K, Shi L, Li W, Wang G *et al*. Siglec-10 is associated with survival and natural killer cell dysfunction in hepatocellular carcinoma. *J Surg Res* 2015; **194**: 107–113.
- 41 Mattioli I, Pesant M, Tentorio PF, Molgora M, Marcenaro E, Lugli E *et al*. Priming of human resting NK cells by autologous M1 macrophages via the engagement of IL-1 β . *IFN- β , and IL-15 Pathways* 2015; **195**: 2818–2828.
- 42 Joncker NT, Shifrin N, Delebecque F, Raulet DH. Mature natural killer cells reset their responsiveness when exposed to an altered MHC environment. *J Exp Med* 2010; **207**: 2065–2072.
- 43 Donkor MK, Sarkar A, Li MO. Tgf- β 1 produced by activated CD4⁺ T cells antagonizes T cell surveillance of tumor development. *Oncotarget* 2012; **1**: 162–171.
- 44 Salazar-Onfray F, López MN, Mendoza-Naranjo A. Paradoxical effects of cytokines in tumor immune surveillance and tumor immune escape. *Cytokine Growth Factor Rev* 2007; **18**: 171–182.
- 45 Nefedova Y, Huang M, Kusmartsev S, Bhattacharya R, Cheng P, Salup R *et al*. Hyperactivation of STAT3 is involved in abnormal differentiation of dendritic cells in cancer. *J Immunol* 2004; **172**: 464–474.
- 46 Platonova S, Cherfils-Vicini J, Damotte D, Crozet L, Vieillard V, Validire P *et al*. Profound coordinated alterations of intratumoral NK cell phenotype and function in lung carcinoma. *Cancer Res* 2011; **71**: 5412–5422.
- 47 Caligiuri MA. Human natural killer cells. *Blood* 2008; **112**: 461–469.
- 48 Fu B, Tian Z, Wei H. Subsets of human natural killer cells and their regulatory effects. *Immunology* 2014; **141**: 483–489.
- 49 Cariani E, Pilli M, Zerbini A, Rota C, Olivani A, Pelosi G *et al*. Immunological and molecular correlates of disease recurrence after liver resection for hepatocellular carcinoma. *PLoS One* 2012; **7**: e32493.
- 50 Gao Q, Zhou J, Wang XY, Qiu SJ, Song K, Huang XW, *et al*. Infiltrating memory/senescent T cell ratio predicts extrahepatic metastasis of hepatocellular carcinoma. *Ann Surg Oncol* 2012; **19**: 455–466.
- 51 Cai XY, Wang JX, Yi Y, He HW, Ni XC, Zhou J *et al*. Low counts of gammadelta T cells in peritumoral liver tissue are related to more frequent recurrence in patients with hepatocellular carcinoma after curative resection. *Asian Pacific J Cancer Prev* 2014; **15**: 775–780.
- 52 Ramzan M, Sturm N, Decaens T, Bioulac-Sage P, Bancel B, Merle P *et al*. Liver-infiltrating CD8 lymphocytes as prognostic factor for tumour recurrence in hepatitis C virus-related hepatocellular carcinoma. *Liver Int* 2015; **36**: 434–444.



This work is licensed under a Creative Commons Attribution-NonCommercial-NoDerivs 4.0 International License. The images or other third party material in this article are included in the article's Creative Commons license, unless indicated otherwise in the credit line; if the material is not included under the Creative Commons license, users will need to obtain permission from the license holder to reproduce the material. To view a copy of this license, visit <http://creativecommons.org/licenses/by-nc-nd/4.0/>