

Mice lacking NF- κ B1 exhibit marked DNA damage responses and more severe gastric pathology in response to intraperitoneal tamoxifen administration

Michael D Burkitt¹, Jonathan M Williams², Tristan Townsend¹, Rachael Hough¹ and D Mark Pritchard^{*1}

Tamoxifen (TAM) has recently been shown to cause acute gastric atrophy and metaplasia in mice. We have previously demonstrated that the outcome of *Helicobacter felis* infection, which induces similar gastric lesions in mice, is altered by deletion of specific NF- κ B subunits. *Nfkb1*^{-/-} mice developed more severe gastric atrophy than wild-type (WT) mice 6 weeks after *H. felis* infection. In contrast, *Nfkb2*^{-/-} mice were protected from this pathology. We therefore hypothesized that gastric lesions induced by TAM may be similarly regulated by signaling via NF- κ B subunits. Groups of five female C57BL/6 (WT), *Nfkb1*^{-/-}, *Nfkb2*^{-/-} and *c-Rel*^{-/-} mice were administered 150 mg/kg TAM by IP injection. Seventy-two hours later, gastric corpus tissues were taken for quantitative histological assessment. In addition, groups of six female WT and *Nfkb1*^{-/-} mice were exposed to 12 Gy γ -irradiation. Gastric epithelial apoptosis was quantified 6 and 48 h after irradiation. TAM induced gastric epithelial lesions in all strains of mice, but this was more severe in *Nfkb1*^{-/-} mice than in WT mice. *Nfkb1*^{-/-} mice exhibited more severe parietal cell loss than WT mice, had increased gastric epithelial expression of Ki67 and had an exaggerated gastric epithelial DNA damage response as quantified by γ H2AX. To investigate whether the difference in gastric epithelial DNA damage response of *Nfkb1*^{-/-} mice was unique to TAM-induced DNA damage or a generic consequence of DNA damage, we also assessed gastric epithelial apoptosis following γ -irradiation. Six hours after γ -irradiation, gastric epithelial apoptosis was increased in the gastric corpus and antrum of *Nfkb1*^{-/-} mice. NF- κ B1-mediated signaling regulates the development of gastric mucosal pathology following TAM administration. This is associated with an exaggerated gastric epithelial DNA damage response. This aberrant response appears to reflect a more generic sensitization of the gastric mucosa of *Nfkb1*^{-/-} mice to DNA damage.

Cell Death and Disease (2017) 8, e2939; doi:10.1038/cddis.2017.332; published online 20 July 2017

Gastric cancer in humans is strongly associated with gastric colonization with *Helicobacter pylori*.¹ This leads, in a minority of people, to a preneoplastic cascade of pathology that develops over several decades. This cascade is typified by gastric oxyntic gland atrophy, epithelial metaplasia, dysplasia and cancer.² These events can be modeled by infecting C57BL/6 mice with the related bacterium *Helicobacter felis*. In this model, advanced gastric preneoplasia develops over 12 months and, in some hands, malignancies have been reported in animals aged 13–15 months.^{3,4}

The development of gastric preneoplasia in response to gastric *Helicobacter* infection occurs on the background of chronic inflammation of the gastric mucosa. The signaling pathways that regulate gastric epithelial remodeling in response to chronic inflammation are complex and have not been fully elucidated. However, there is a wealth of evidence that signaling through NF- κ B pathways is involved in the development of inflammation-associated malignancies both in the stomach and in other parts of the gastrointestinal tract.⁵ The NF- κ B proteins are a group five of structurally related transcription factors (RelA (p65), RelB, c-Rel, NF- κ B1 (p50) and NF- κ B2 (p52)), which influence transcription through the binding of homodimer or heterodimers of themselves to

chromatin. Activation of transcription through these proteins is tightly regulated, both through a network of upstream signaling kinases and by complex posttranscriptional modification of the NF- κ B subunits. Two distinct NF- κ B pathways are conventionally described: the classical (canonical) pathway is regulated by the activation of IKK β , following stimuli including TNF binding to its receptor, and activation of Toll-like receptors. The principal NF- κ B dimers activated by this pathway are RelA/NF- κ B1 dimers and RelA/c-Rel dimers. In contrast, the alternative (non-canonical) NF- κ B signaling pathway is regulated by the kinase NIK and is characterized by transcriptional regulation by dimers of RelB/NF- κ B2 (see Merga *et al.*⁵ for a recent review of these pathways).

We have previously reported that *H. felis*-induced gastric preneoplasia is differentially regulated by signaling involving specific NF- κ B subunits. Mice lacking the NF- κ B1 subunit developed more severe gastric atrophy after 6 weeks of infection and more severe preneoplastic pathology when infected for 12 months. In contrast, *Nfkb2*^{-/-} mice were entirely protected from *H. felis*-induced pathology, despite heavy colonization by these bacteria.⁶ This has also been demonstrated in the context of acute inflammatory responses in the intestinal tract where *Nfkb2*^{-/-} mice exposed to low-dose

¹Department of Cellular and Molecular Physiology, Institute of Translational Medicine, University of Liverpool, The Henry Wellcome Laboratory, Liverpool, UK and

²Pathology and Pathogen Biology, Royal Veterinary College, North Mymms, UK

*Corresponding author: DM Pritchard, Department of Cellular and Molecular Physiology, Institute of Translational Medicine, University of Liverpool, The Henry Wellcome Laboratory, Nuffield Building, Crown St., Liverpool L69 3GE, UK. Tel: +44 015 179 455 63; Fax: +44 151 706 5832; E-mail: mark.pritchard@liverpool.ac.uk

Received 01.3.17; revised 14.6.17; accepted 15.6.17; Edited by T Kaufmann

lipopolysaccharide systemically were protected from pathological small intestinal villus tip epithelial cell shedding and apoptosis, whereas *Nfkb1*^{-/-} mice demonstrated more severe lesions than wild-type (WT) mice.⁷

It has recently been reported that intraperitoneal administration of tamoxifen to mice induces an acute gastric corpus metaplasia, characterized by the loss of parietal cells, metaplastic changes originating in the chief cells at the base of the gastric glands and increased epithelial cell proliferation.⁸ These findings have been shown to be reproducible in other laboratories,⁹ to be estrogen independent and reversible on discontinuation of tamoxifen. Unlike *H. felis*-induced gastric preneoplasia, this pathology occurs with relatively little associated inflammation in the gastric mucosa;¹⁰ this model therefore offers an opportunity to investigate gastric epithelial remodeling in the absence of a chronic inflammatory stimulus.

We have utilized this model to characterize whether the regulation of gastric preneoplasia by mice lacking specific NF- κ B subunits is a generic response to gastric epithelial remodeling or specific to the events induced by *H. felis* infection.

Results

Tamoxifen induced gastric corpus pathology is regulated by *Nfkb1*. To characterize whether deletion of specific NF- κ B subunits altered the severity of pathology induced by administration of tamoxifen, groups of at least five, 12-week old, WT, *Nfkb1*^{-/-}, *Nfkb2*^{-/-} and *c-Rel*^{-/-} female mice were either treated with tamoxifen or vehicle and culled 72 h later. Gastric pathology was scored using an established scoring system.¹¹ Vehicle-treated mice of all genotypes exhibited

minimal gastric lesions (Figures 1 and 2a). Following administration of tamoxifen, morphological changes were seen in the corpus mucosa of all groups of mice. Tamoxifen-treated WT mice had mean pathology scores of 2.4 (\pm 0.51 S.E.M.). *Nfkb2*^{-/-} and *c-Rel*^{-/-} mice exhibited similar lesion scores, while *Nfkb1*^{-/-} mice exhibited more severe gastric lesions with a mean score of 4.8 (\pm 0.74, P <0.01 by two-way analysis of variance (ANOVA) and Dunnett's *post hoc* test).

To quantify the degree of gastric atrophy induced by tamoxifen, we assessed the number of H⁺/K⁺ATPase-expressing cells. Among untreated mice, no significant differences in the number or distribution of parietal cells were identified between the mice of different genotypes. In all, 31.2% of cells in the gastric corpus of untreated WT mice expressed H⁺/K⁺ATPase (Figures 1 and 2b), and cells were distributed between cell positions 2 and 36 of the gastric gland, with peak prevalence at cell position 15 (Figure 2c).

Following administration of tamoxifen, the number of H⁺/K⁺ATPase-expressing cells did not differ substantially in WT mice, but a shift in parietal cell distribution up the gland was noted (significantly higher numbers of parietal cells observed between cell positions 18 and 36 in tamoxifen-treated mice, P <0.05 by modified median testing, Figure 2c). In keeping with the visual analog scoring of gastric lesions, similar numbers and distributions of H⁺/K⁺ATPase-expressing cells were identified in the corpus of *Nfkb2*^{-/-} and *c-Rel*^{-/-} mice that had been exposed to tamoxifen (Figures 2b, e and f). In contrast, *Nfkb1*^{-/-} mice showed more marked changes in parietal cell distribution than their WT counterparts, with a 2.4-fold reduction in parietal cell number (P <0.001 by two-way ANOVA and Dunnett's *post hoc* analysis, Figure 2b), and a marked reduction in parietal cell abundance between cell

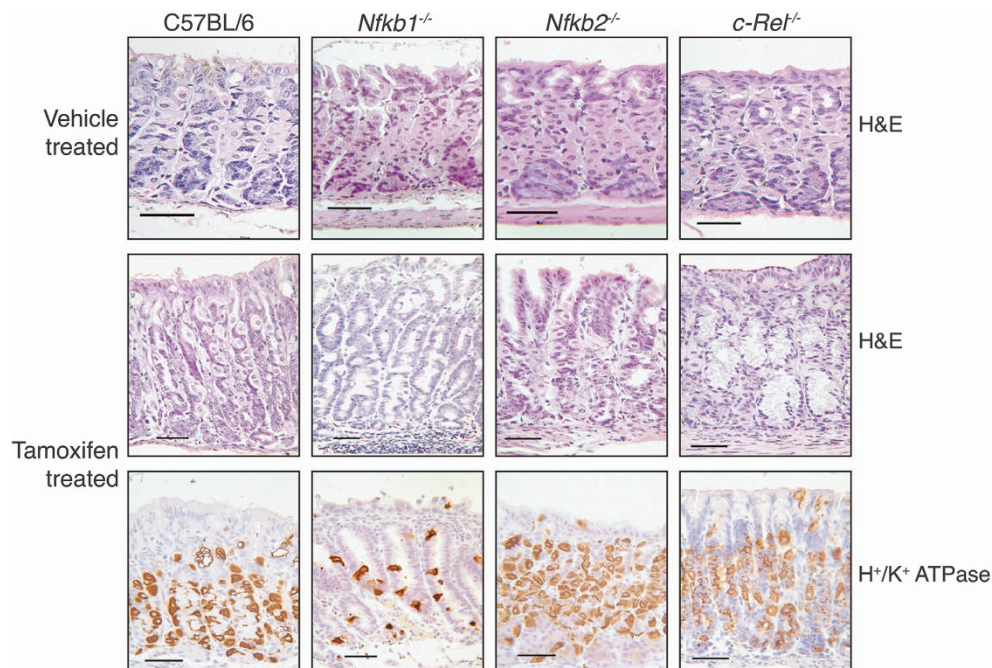


Figure 1 Representative photomicrographs of gastric corpus of WT, *Nfkb1*^{-/-}, *Nfkb2*^{-/-} and *c-Rel*^{-/-} mice treated with vehicle or 150 mg/kg tamoxifen. Sections stained with hematoxylin and eosin or immunostained for the expression of H⁺/K⁺ATPase. Scale bars 100 μ m

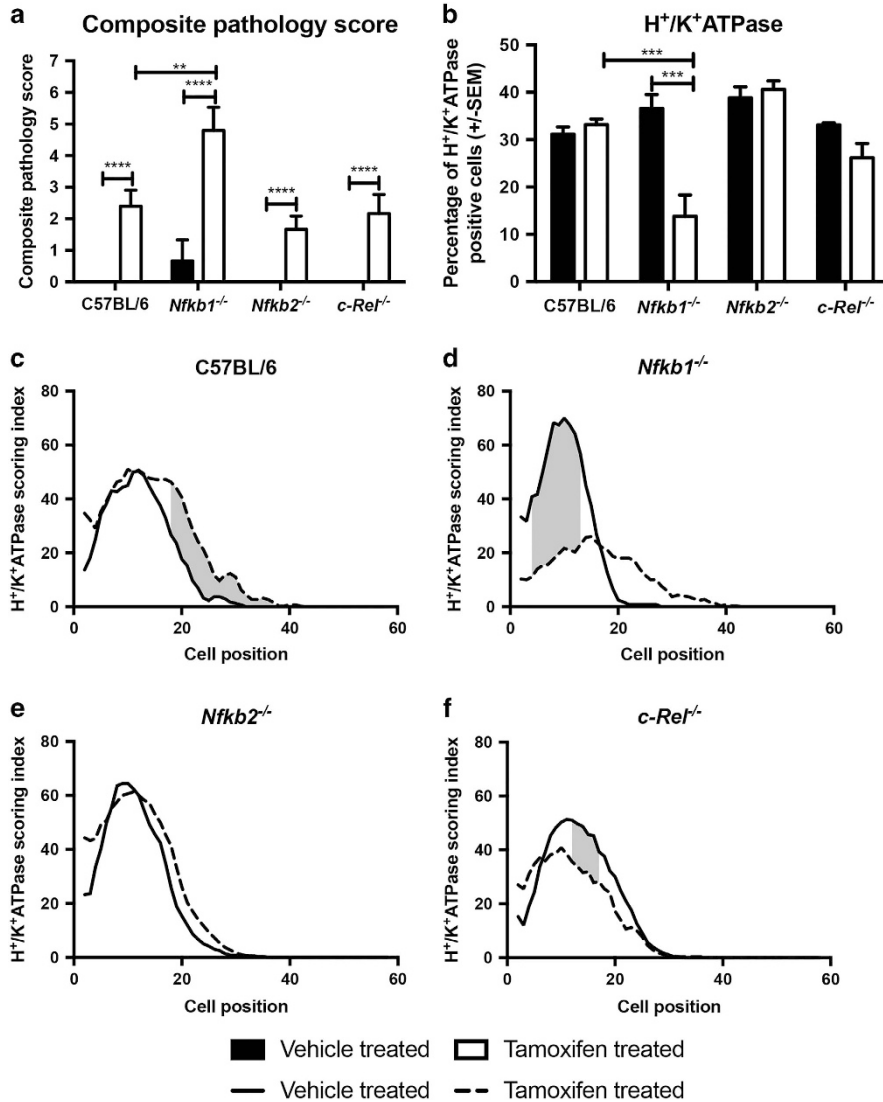


Figure 2 Tamoxifen-induced epithelial lesions in WT, *Nfkb1*^{-/-}, *Nfkb2*^{-/-} and *c-Rel*^{-/-} mice. (a) Visual analog scoring of pathology identified in hematoxylin and eosin-stained sections from mice treated with vehicle or 150 mg/kg tamoxifen. (b) Percentage of gastric corpus gland cells expressing H⁺/K⁺ATPase in mice treated with vehicle or 150 mg/kg tamoxifen. For panels (a and b), statistically significant differences tested by two-way ANOVA and Dunnett's test. ***P* < 0.01, ****P* < 0.001, *****P* < 0.0001. (c-f): H⁺/K⁺ATPase-positive cells plotted by cell position in the gastric corpus hemiglands of WT (c), *Nfkb1*^{-/-} (d), *Nfkb2*^{-/-} (e) and *c-Rel*^{-/-} (f). Solid line represents distribution of cells in vehicle-treated mice, broken line tamoxifen-treated mice. Shaded area marks region of gland where distribution of H⁺/K⁺ATPase-positive cells differs significantly in tamoxifen-treated versus vehicle-treated mice, *P* < 0.05 by modified median test. *N* = 5 for all experimental groups

positions 4 and 13 of gastric corpus glands (*P* < 0.05 by modified median testing, Figure 2d). To validate this observation and to determine whether the observed effects of tamoxifen were likely due to an estrogen receptor-mediated effect, we performed quantitative real-time PCR on gastric mucosal samples from WT and *Nfkb1*^{-/-} mice that had or had not been treated with tamoxifen. These assays demonstrated reduced transcription of ATP4A (encoding H⁺/K⁺ATPase) in tamoxifen-treated WT and *Nfkb1*^{-/-} mice but no differences in the expression of estrogen receptor-regulated genes *ErbB2* or *Wnt5A* (Supplementary Figure 1).

Nfkb1-mediated signaling regulates tamoxifen-induced cell proliferation. To determine whether NF- κ B signaling influenced gastric epithelial cell turnover following the

administration of tamoxifen, we quantified cells expressing the S-phase marker Ki67 and those undergoing apoptosis by the expression of cleaved caspase 3.

In untreated mice, genotype did not significantly influence the number of cleaved caspase 3-positive cells, which were relatively rare occurrences (1.4 ± 0.68 S.E.M. cells per high-power (×40 objective) field). However, there was a trend toward more apoptosis in both *Nfkb1*^{-/-} and *Nfkb2*^{-/-} mice. Administration of tamoxifen to WT mice increased the number of cleaved caspase 3-positive cells 3.4-fold, but this did not reach statistical significance (Figures 3a and b). In both *Nfkb1*^{-/-} and *Nfkb2*^{-/-} mice, tamoxifen induced apoptosis in a larger number of apoptotic cells than in WT mice (3.9- and 4.8-fold, *P* < 0.05 and *P* < 0.01, respectively).

In untreated WT mice, 18.1% (± 0.7) of gastric corpus epithelial cells were in S phase. They were distributed between cell positions 5 and 32; peak proliferative index was observed at cell positions 15 and 16. Proliferating cells were more abundant in untreated *Nfkb1*^{-/-} mice, compared with WT (26.6% \pm 1.9, $P < 0.05$ by two-way ANOVA and Dunnett's *post hoc* test); in this genotype, peak proliferative index was observed at cell position 14, and proliferating cells were observed between cell positions 2 and 29. Other untreated transgenic mice exhibited similar proliferation indices to WT mice.

Following tamoxifen treatment, the number of proliferating cells observed in WT mice increased 1.8-fold ($P < 0.01$, Figures 3a, c and d). This increase was recapitulated in other genotypes of mice (Figures 3a, c and e-g) but was more pronounced in *Nfkb1*^{-/-} mice than other groups, where a 2.4-fold increase in proliferating cells was observed ($P < 0.0001$ compared with tamoxifen-treated WT mice, Figure 3c). In these animals, proliferating cells were observed between cell positions 2 and 52, with peak proliferative index at cell position 16.

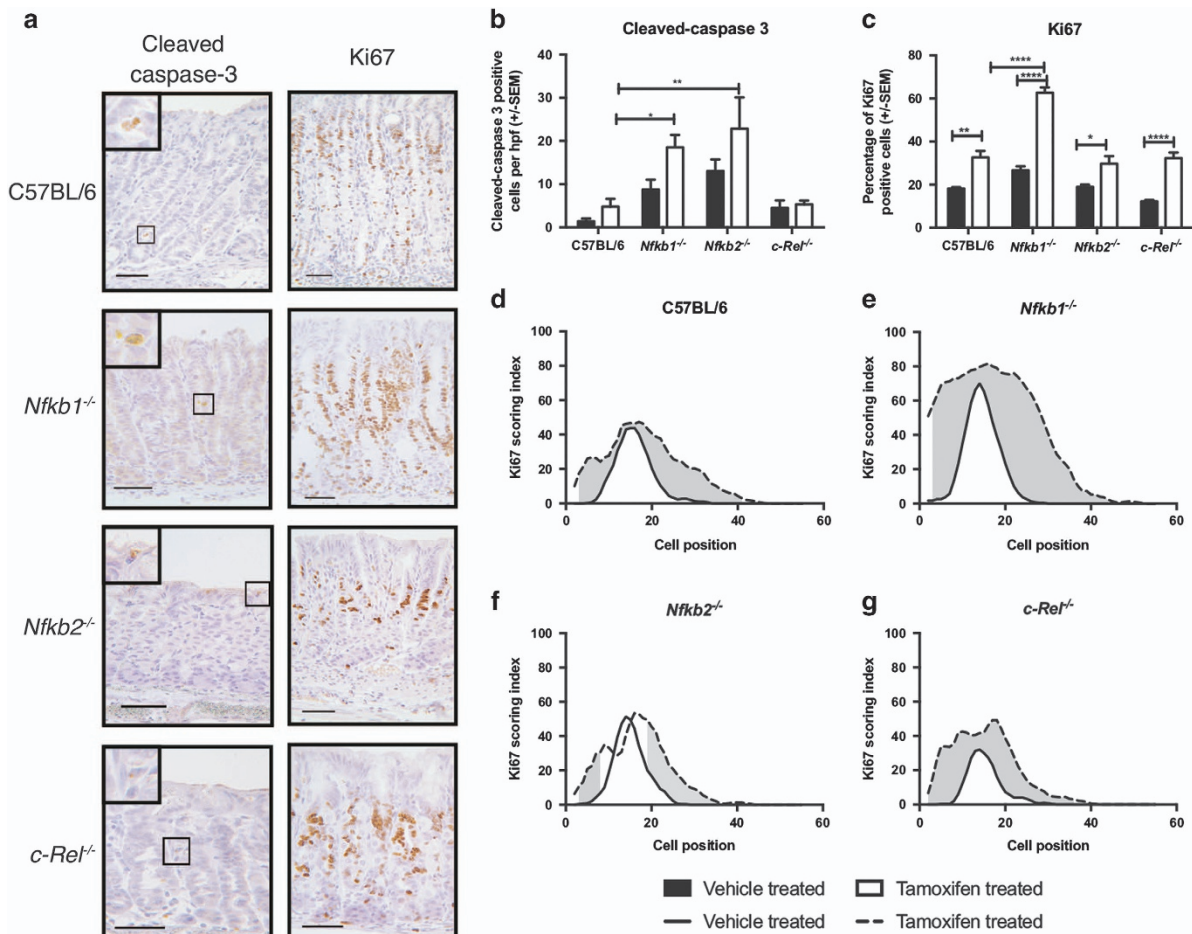
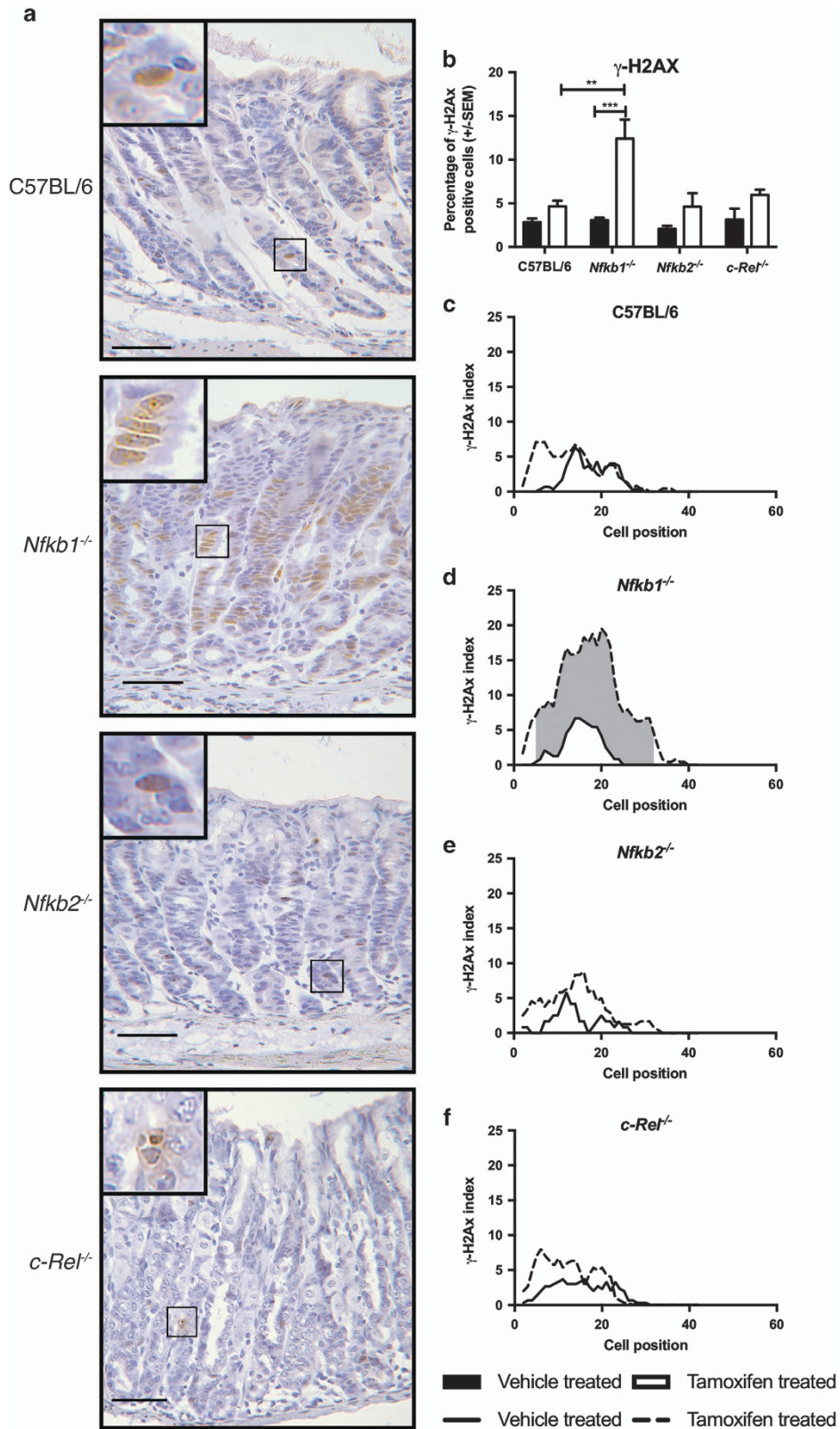


Figure 3 Gastric corpus epithelial cell turnover following tamoxifen administration in WT, *Nfkb1*^{-/-}, *Nfkb2*^{-/-} and *c-Rel*^{-/-} mice. (a) Representative photomicrographs of gastric corpus of WT, *Nfkb1*^{-/-}, *Nfkb2*^{-/-} and *c-Rel*^{-/-} mice treated with 150 mg/kg tamoxifen. Sections immunostained for expression of cleaved caspase-3 or Ki67. Scale bars 100 μ m. (b) Number of cleaved-caspase 3-positive cells identified per high-power field in mice treated with vehicle or 150 mg/kg tamoxifen. (c) Percentage of gastric corpus gland cells expressing Ki67 in mice treated with vehicle or 150 mg/kg tamoxifen. For panels (b) and (c), statistically significant differences tested by two-way ANOVA and Dunnett's test. * $P < 0.05$, ** $P < 0.01$, **** $P < 0.0001$. (c-f) Ki67-positive cells plotted by cell position in the gastric corpus hemiglans of WT (d), *Nfkb1*^{-/-} (e), *Nfkb2*^{-/-} (f) and *c-Rel*^{-/-} (g) mice. Solid line represents distribution of cells in vehicle-treated mice, broken line tamoxifen-treated mice. Shaded area marks region of gland where distribution of Ki67-positive cells differs significantly in tamoxifen-treated versus vehicle-treated mice, $P < 0.05$ by modified median test. $N = 5$ for all experimental groups

Figure 4 Gastric corpus expression of γ -H2AX following tamoxifen administration in WT, *Nfkb1*^{-/-}, *Nfkb2*^{-/-} and *c-Rel*^{-/-} mice. (a) Representative photomicrographs of gastric corpus of WT, *Nfkb1*^{-/-}, *Nfkb2*^{-/-} and *c-Rel*^{-/-} mice treated with 150 mg/kg tamoxifen. Sections immunostained for expression of γ -H2AX. Scale bars 100 μ m. (b) Percentage of gastric corpus gland cells expressing γ -H2AX in mice treated with vehicle or 150 mg/kg tamoxifen. Statistically significant differences tested by two-way ANOVA and Dunnett's test. ** $P < 0.01$, *** $P < 0.001$. (b-e) γ -H2AX-positive cells plotted by cell position in the gastric corpus hemiglans of WT (c), *Nfkb1*^{-/-} (d), *Nfkb2*^{-/-} (e) and *c-Rel*^{-/-} (f) mice. Solid line represents distribution of cells in vehicle-treated mice, broken line tamoxifen-treated mice. Shaded area marks region of gland where distribution of γ -H2AX cells differs significantly in tamoxifen-treated versus vehicle-treated mice, $P < 0.05$ by modified median test. $N = 5$ for all groups

Nfkb1 regulates tamoxifen-induced DNA damage in the gastric epithelium. To investigate the mechanism underlying differences in sensitivity to tamoxifen-induced gastric

pathology, we assessed whether there were any aberrant DNA damage responses. Although tamoxifen is best characterized as an anti-estrogen receptor drug, it is also a



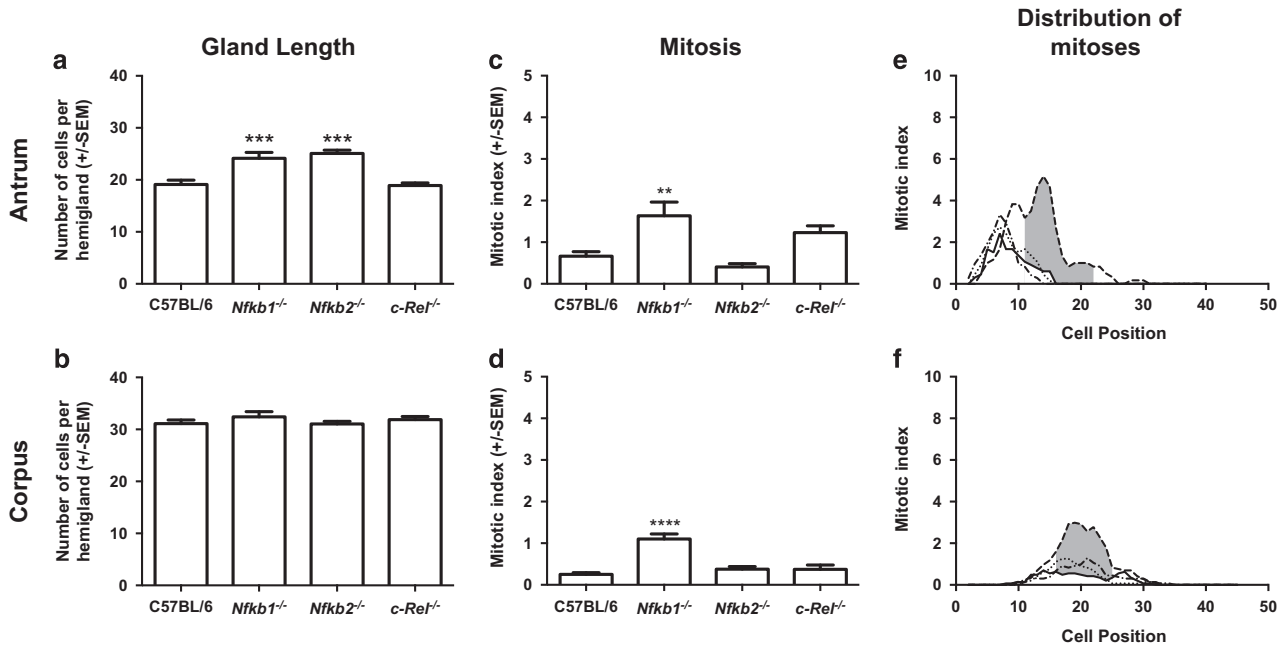


Figure 5 Impact of NF- κ B subunit deletion on gastric gland length (a and b), number of gastric epithelial cells undergoing mitosis (c and d) and location of mitoses within the gastric gland (e and f) of untreated mice. Panels (a, c and e) represent events in the gastric antral mucosa; panels (b, d and f) show data from the gastric corpus. Statistically significant differences tested by one-way ANOVA and Dunnett's test (a–d), ** $P < 0.01$, *** $P < 0.001$ **** $P < 0.0001$. (e and f) Solid line represents distribution of mitotic cells in WT mice, dashed line *Nfkb1*^{-/-}, dotted line *Nfkb2*^{-/-}, dot and dash line *c-Rel*^{-/-} mice. Shaded area marks region of gland where distribution of mitotic cells differs significantly in WT versus *Nfkb1*^{-/-} mice, $P < 0.05$ by modified median test. $N = 6$ for all experimental groups

genotoxic agent. DNA damage induced by tamoxifen is associated with the formation of tamoxifen/DNA adducts and with the induction of oxidative stress by tamoxifen metabolites.¹² This mechanism has been hypothesized to be of clinical relevance in patients treated with tamoxifen, who have an increased risk of some malignancies, including endometrial cancer.¹³ We hypothesized therefore that this effect may influence the degree of gastric pathology induced by tamoxifen.

To quantify this, we immunostained tissue sections using a phospho-specific antibody targeting γ -H2AX, which reflects a DNA damage response in the cell. In untreated gastric corpus mucosa, γ -H2AX was identified in 2.8% of WT epithelial cells. All untreated transgenic groups had similar percentages of γ -H2AX-labeled cells to WT mice (Figures 4a–f). There was a small increase in abundance of γ -H2AX following tamoxifen treatment of WT mice (4.6%), but this did not reach statistical significance. A similar trend toward increased abundance of γ -H2AX was observed in *Nfkb2*^{-/-} and *c-Rel*^{-/-} mice administered tamoxifen. In contrast, the percentage of γ -H2AX-labeled cells increased 4.0-fold in *Nfkb1*^{-/-} mice administered tamoxifen ($P < 0.001$, Figure 4b). Excess γ -H2AX expression occurred over a wide gland area in this strain (between cell positions 5 and 32 of the gastric corpus gland, Figure 4d). In tamoxifen-treated *Nfkb1*^{-/-} mice, γ -H2AX expression was observed between cell positions 2 and 39, with peak γ -H2AX expression observed at cell position 20 (Figure 4d).

Previous studies have suggested that the administration of tamoxifen specifically induced gastric parietal cell death. To characterize which cell types experienced DNA damage in our

studies, we performed co-immunofluorescence studies with immunostaining for both H⁺/K⁺ATPase and γ -H2AX. These assays demonstrated that, while some γ -H2AX-positive cells were parietal cells, other γ -H2AX-positive cells did not express H⁺/K⁺ATPase (Supplementary Figure 2). Because of the differences in proliferation indices observed in *Nfkb1*^{-/-} mice following TAM administration, we also wanted to determine whether DNA damage, identified by γ -H2AX immunostaining, colocalized predominantly with proliferating cells. To do this, we performed γ -H2AX/Ki67 co-immunostaining. This assay demonstrated that, although a proportion of γ -H2AX stained cells were in S phase following tamoxifen administration, the others did not appear to be proliferating (Supplementary Figure 3).

***Nfkb1*^{-/-} mice also have aberrant responses to γ -irradiation induced DNA damage.**

We next wanted to characterize whether the differences identified in γ -H2AX expression in *Nfkb1*^{-/-} mice were due specifically to altered responses to the genotoxic stress induced by tamoxifen or represented a more generic aberrant response to DNA damage. To address this, we quantified gastric epithelial cell turnover in both the gastric corpus and antrum at baseline and 6 and 48 h following 12 Gy γ -irradiation by cell positional scoring of morphologically apoptotic and mitotic cells. This dose and time points of γ -irradiation have previously been demonstrated to be optimal for the assessment of DNA damage-induced apoptosis in the stomach, and morphological assessment of H+E-stained sections correlates well with

other markers of apoptosis, including cleaved-caspase 3 immunostaining and TUNEL staining.¹⁴

In untreated age matched, young adult WT mice, gastric antral glands were 19.1 (±1.9) cells in length on average, while corpus glands were a mean 31.1 (±1.7) cells long. Deletion of NF-κB subunits did not significantly alter the length of gastric corpus glands, while in the antrum, gastric gland hyperplasia to a mean gland length of 24.2 cells (±2.6, $P < 0.01$) was observed in *Nfkb1*^{-/-} mice and to 25.1 cells (±1.6, $P < 0.01$) in *Nfkb2*^{-/-} mice (Figures 5a and b).

An average of 0.66% (±0.24) of antral gland cells were mitotic in untreated WT mice, and these were distributed between cell positions 3 and 15 with peak mitotic index at cell position 7. In *Nfkb1*^{-/-} mice, the number of mitotic cells observed was higher (1.6 ± 0.73%, $P < 0.05$, Figure 5c), and the distribution of mitoses occurred over a wider area (cell positions 4–25), with the position of peak mitotic index shifted up the gland to cell position 14. Statistically significant increases in mitotic indices were observed at cell positions 11–22 in *Nfkb1*^{-/-} compared with WT mice ($P < 0.05$, Figure 5e). No statistically significant differences in the number or distribution of mitotic cells were identified in the gastric mucosae of mice lacking NF-κB2 or c-Rel.

In gastric corpus mucosa, 0.25% (±0.10) of cells were mitotic in WT mice (Figure 5d). These events were distributed between cell positions 10 and 31, with peak mitotic index at cell position 14 (Figures 5d and f). In *Nfkb1*^{-/-} mice, 1.1% (±0.29, $P < 0.0001$) of gastric corpus cells were mitotic and mitotic cells were distributed between cell positions 11 and 32, with peak mitotic index at cell position 19. Increased gastric corpus mitotic index ($P < 0.05$) was observed in *Nfkb1*^{-/-} mice compared with WT mice between cell positions 16 and 25 (Figures 5d and f).

In untreated WT mice, 0.17% (±0.25) of cells in the gastric antrum were identified as morphologically apoptotic; these

events were distributed in low numbers from cell position 4 to 12. Neither the number nor the distribution of apoptotic cells was significantly different in the antrum of untreated *Nfkb1*^{-/-} mice (Figures 6a, c and e). In the corpus of untreated WT mice, 0.04% (±0.04) of cells were morphologically apoptotic and were distributed between cell positions 8 and 26. By this measure, the number of apoptotic cells in the gastric corpus was increased 4.8-fold in untreated *Nfkb1*^{-/-} mice (0.19% ± 0.15, $P < 0.05$), and the apoptotic cells were distributed over a marginally wider region of the corpus gland than in WT mice (cell positions 5–32) (Figures 6b, d and f).

γ-Irradiation entirely suppressed mitosis in the gastric tissues of both WT and *Nfkb1*^{-/-} mice at both 6- and 48-h after irradiation. However, 6 h after γ-irradiation, the numbers of apoptotic cells identified in both the corpus and antrum of *Nfkb1*^{-/-} mice were higher than in similar tissues from WT mice (Figures 6c and d). In the antrum, 2.8% (±1.1) of gastric antral cells were apoptotic in WT mice, with apoptotic cells distributed between cell positions 2 and 17 and peak apoptotic index at cell position 6. Six hours after γ-irradiation, 4.4% (±1.5, $P < 0.05$) of antral cells were apoptotic in *Nfkb1*^{-/-} mice, with apoptotic cells observed between cell positions 2 and 24 and peak apoptotic index at cell position 7. Significantly increased apoptosis was observed in *Nfkb1*^{-/-} mice between cell positions 10 and 17 ($P < 0.05$, Figure 6g).

Six hours after γ-irradiation, 0.34% (±0.04) cells were apoptotic in the gastric corpus of WT mice, compared with 1.8% (±0.07) cells in *Nfkb1*^{-/-} mice ($P < 0.0001$). Apoptotic cells were distributed between cell positions 9 and 28 in WT mice, with peak apoptotic indices observed at cell positions 13 and 19. In *Nfkb1*^{-/-} mice, apoptosis was observed between cell positions 6 and 33, with peak apoptosis at cell position 18. Increased apoptosis was observed in the gastric corpus of *Nfkb1*^{-/-} mice between cell positions 9 and 25 ($P < 0.05$, Figure 6h).

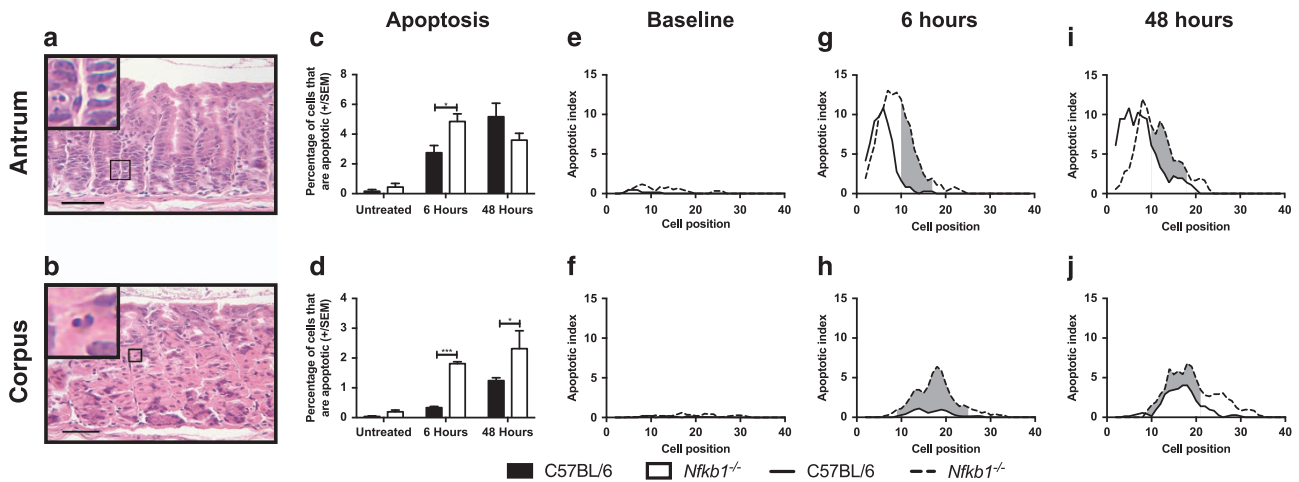


Figure 6 Impact of NF-κB1 deletion on gastric epithelial apoptosis in untreated and 12 Gy γ-irradiated mice 6 and 48 h after irradiation. (a and b) Representative images of gastric corpus and antrum respectively stained with hematoxylin and eosin, arrows highlight apoptotic epithelial cells. Scale bars 100 μm. (c and d) Percentage of gastric epithelial cells undergoing apoptosis in gastric antrum and corpus, respectively. Statistically significant differences tested by two-way ANOVA and Dunnett's test. * $P < 0.05$, *** $P < 0.001$. (e–j) Apoptotic cells plotted by cell position in the gastric antrum (e, g and i) and corpus (f, h and j) of untreated and irradiated WT and *Nfkb1*^{-/-} mice. Solid lines represent distribution of cells in WT mice, broken lines *Nfkb1*^{-/-} mice. Shaded areas mark regions of glands where distribution of apoptotic cells differs significantly in WT versus *Nfkb1*^{-/-} mice, $P < 0.05$ by modified median test. $N = 6$ for all experimental groups

Forty-eight hours after γ -irradiation, the differences in apoptotic cell number between WT and *Nfkb1*^{-/-} mice were less marked, particularly in the gastric antrum. At this time point, 5.2% (\pm 2.0) of antral epithelial cells were apoptotic in WT mice, compared with 3.6% of cells in *Nfkb1*^{-/-} mice ($P=0.10$, Figure 6c). Apoptosis was observed in WT mice between cell positions 2 and 20, with peak apoptosis at cell position 5. The distribution of apoptosis in *Nfkb1*^{-/-} mice was shifted slightly up the antral gland compared with WT mice, with apoptotic cells being observed between cell positions 2 and 23 and peak apoptosis at cell position 8. Increased apoptosis was observed in *Nfkb1*^{-/-} mice between cell positions 10 and 18 ($P<0.05$, Figure 6i).

In the gastric corpus, 1.2% (\pm 0.09) of cells were apoptotic in WT mice 48 h after γ -irradiation, compared with 2.3% (\pm 0.60) in *Nfkb1*^{-/-} mice ($P<0.05$ Figure 6d). At this time point, apoptotic cells were observed between cell positions 4 and 30, with peak apoptosis at cell positions 17 and 18 in WT mice. In *Nfkb1*^{-/-} mice, apoptotic cells were observed between cell positions 9 and 35, with peak apoptosis at cell position 14. Increased apoptosis was observed between cell positions 9 and 21 ($P<0.05$, Figure 6j).

***Nfkb1*^{-/-} animals have primed extrinsic pathway apoptosis mechanisms in the gastric epithelium.** To investigate the mechanism underlying the increased gastric epithelial apoptosis in mice lacking *Nfkb1*, we extracted mRNA from mucosal samples of mice either without treatment or 6 h following γ -irradiation. We performed real-time PCR assays to quantify the expression of eight regulators of apoptosis that have previously been shown to be under the transcriptional regulation of NF- κ B signaling.^{15–21} No statistically significant differences in the expression of the inhibitors of apoptosis c-IAP1, c-IAP2 or XIAP were identified (Figures 7a–c) nor were changes in the expression of p53, BCL-2 or BCL_{XL} observed (Figures 7d–f). In contrast, Fas and FasL expression levels were both upregulated (1.8- and 4.8-fold, $P<0.01$ and $P<0.0001$ respectively, Figures 7g and h) in the gastric mucosa of untreated *Nfkb1*^{-/-} mice compared with WT mice. Six hours after γ -irradiation, Fas and FasL transcript abundance increased in WT mice to levels similar to those identified in *Nfkb1*^{-/-} mice at baseline, suggesting that this pathway is activated in response to γ -irradiation.

Discussion

These data demonstrate that NF- κ B signaling is involved in regulating the development of gastric epithelial metaplasia and atrophy following tamoxifen administration. In this model, the most significant NF- κ B subunit appears to be NF- κ B1, as mice lacking NF- κ B2 and c-Rel demonstrated few differences in response compared with WT mice. This contrasts with previous observations from our own laboratory that have demonstrated differential regulation of *H. felis*-induced gastric preneoplastic pathology in mice lacking NF- κ B2 as well as NF- κ B1.

The differences in gastric epithelial pathology observed in *Nfkb1*^{-/-} mice following tamoxifen administration were associated with a more pronounced proliferative response and increased epithelial cell apoptosis. This increase in proliferation was observed throughout the gland. This is consistent

with recent reports by Burclaff *et al.*²² that describe the development of a metaplastic progenitor source following tamoxifen-induced dedifferentiation of chief cells.

Further investigation of the DNA damage responses of *Nfkb1*^{-/-} mice demonstrated an increased sensitivity to γ -irradiation-induced epithelial cell apoptosis than WT mice. This suggests that the difference in response to tamoxifen may reflect a more generalized difference in DNA damage responses in these mice, rather than a specific tamoxifen-related event. This is supported by earlier studies which have shown that, following γ -irradiation, *Nfkb1*^{-/-} mice exhibited more small intestinal apoptosis than WT mice.²³

The dynamics of NF- κ B- and p53-mediated signaling in response to DNA damage have been subject to systematic modeling in recent years.²⁴ This work has demonstrated that these mechanisms are closely linked and form a complex regulatory network for DNA damage responses. It is therefore unsurprising that abrogation of NF- κ B signaling pathways leads to altered DNA damage responses. Nonetheless, it is striking that following tamoxifen administration this effect was almost exclusively associated with NF- κ B1 deletion.

We adopted a candidate gene approach to try to identify specific targets of NF- κ B signaling that could explain the observed differences in apoptosis. Although there are compromises associated with this approach, we identified potential priming of the CD95/FasL pathway in untreated mice lacking NF- κ B1. Although this pathway is not the most frequently studied in DNA damage-induced apoptosis, there are both *in vitro*²⁵ and *in vivo*²⁶ studies that demonstrate its role in modulating radiation-induced apoptosis. Further studies that address the functional effect of components of this pathway on tamoxifen-induced gastric lesions may provide further insight into this mechanism.

Previous data have demonstrated that gastric epithelial cells express the estrogen receptor, and hence a direct abrogation of signaling through this receptor is a biologically plausible mechanism for inducing gastric atrophy; however, the similarity of lesions induced in the stomach following tamoxifen with that induced by known protonophores including DMP-777 has also promoted the concept of tamoxifen acting as a direct epithelial cell toxin.¹⁰ Our DNA damage assays suggest that genotoxic stress may contribute to the gastric lesions induced by tamoxifen. However, further studies investigating the underlying mechanism of tamoxifen-induced gastric murine pathology are required.

We conclude that signaling involving NF- κ B1 regulates gastric epithelial pathology in response to a second model of gastric atrophy and metaplasia. As in *H. felis* infection, following tamoxifen administration, signaling mediated by NF- κ B1 appears to suppress gastric epithelial cell turnover and DNA damage responses. This is coupled with altered baseline expression of Fas and FasL in mice lacking NF- κ B1, which may contribute to excess apoptosis following genotoxic stress. Given that these animals demonstrate differences in susceptibility to both genotoxic stress and susceptibility to gastric preneoplasia, further studies investigating how abrogation of NF- κ B signaling pathways influences chemical carcinogen-induced gastric carcinogenesis would provide interesting insight into the importance of these pathways during gastric carcinogenesis.

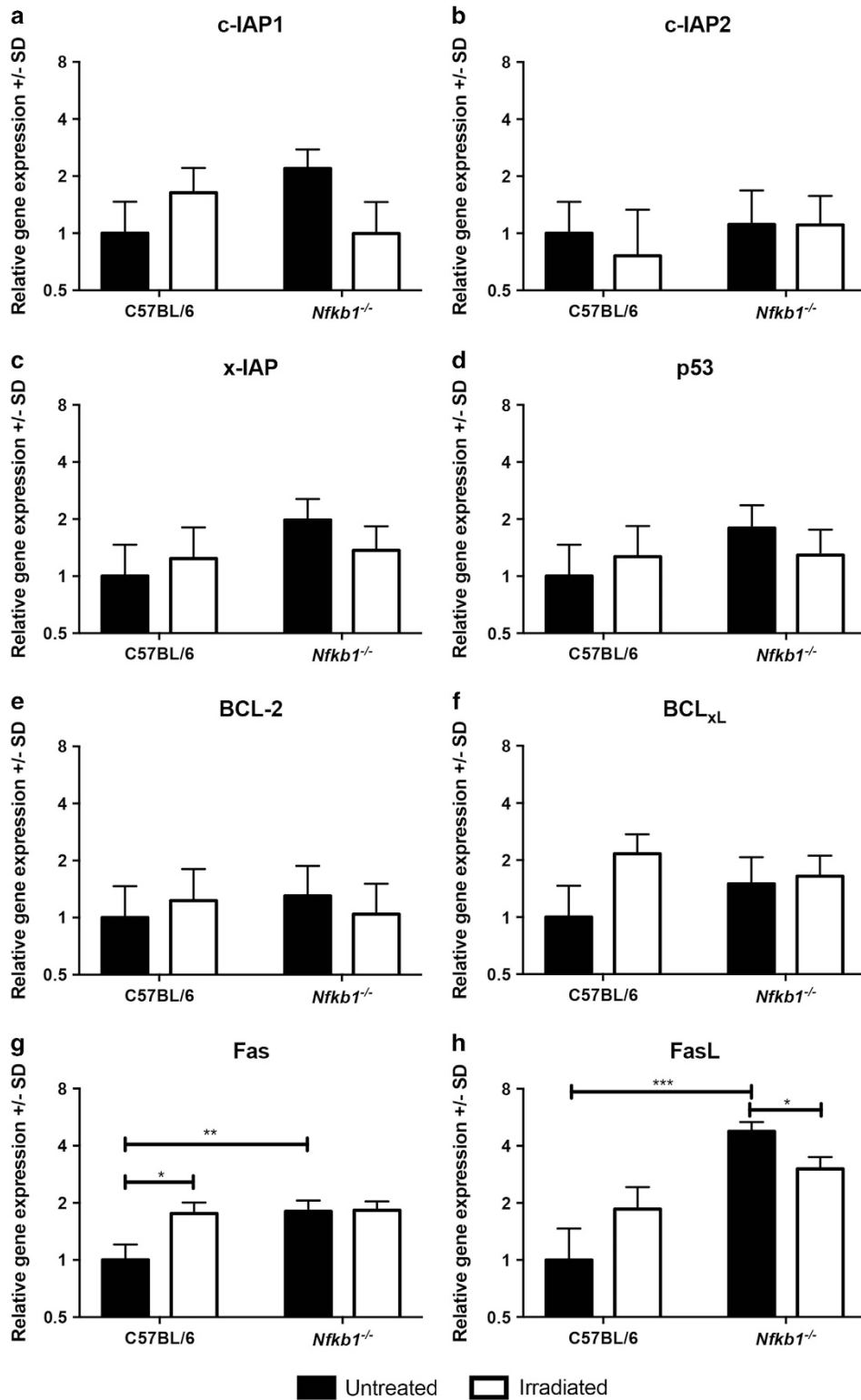


Figure 7 Relative gene expression of specified regulators of apoptosis under transcriptional regulation of NF- κ B signaling. Filled bars represent untreated mice, open bars animals culled 6 h after 12 Gy γ -irradiation. Mean and S.D of Log₂-transformed relative abundance for each transcript are plotted. Statistically significant differences tested by two-way ANOVA and Dunnett's test, * P < 0.05, ** P < 0.01, *** P < 0.001. N = 3 for all experimental groups. Panels show expression of the following transcripts: (a) c-IAP1, (b) c-IAP2, (c) x-IAP, (d) p53, (e) BCL-2, (f) BCL-xL, (g) Fas, (h) FasL.

Table 1 Primers, probes and amplicons for quantitative PCR assays

	Target	Forward primer (5' → 3')	Reverse primer (5' → 3')	UPL probe	Amplicon (bp)	Intron (bp)
Fas	ENSMUSG00000024778	TGCAGACATGCTGTGGATCT	CTTAAGTGTGAGCCAGCAAGC	#34	60	16 377
FasL	ENSMUSG00000000817	ACCGGTGGTATTTTTTCATGG	AGGCTTTGGTTGGTGAAGCTC	#21	117	791
c-IAP1	ENSMUSG00000057367	GAAGAAAATGCTGACCCTACAGA	CATGACGACATCTTCCGAAC	#80	72	4393
c-IAP2	ENSMUSG00000032000	GGGGACGATTTAAAGGTATCG	TCGGTTTTACTGCTAGGCTGA	#5	139	11 412
XIAP	ENSMUSG00000025860	GCTTGCAAGAGCTGGATTTT	TGGCTTCCAATCCGTGAG	#25	88	1334
p53	ENSMUSG00000059552	ATGCCCATGCTACAGAGGAG	AGACTGGCCCTTCTTGGTCT	#78	74	585
Bcl-2	ENSMUSG00000057329	GTACCTGAACCGCATCTG	GGGGCCATATAGTTCCACAA	#75	76	168 904
Bcl-xL	ENSMUSG00000007659	TGACCACCTAGAGCCTTGA	TGTTCCCGTAGAGATCCACAA	#2	68	47 142
GAPDH	ENSMUSG00000057666	GGGTTCTATAAATACGGACTGC	CCATTTTGTCTACGGGACGA	#52	112	240

In the current study, we observed no differences between WT and *Nfkb2*^{-/-} mice. This is in contrast to *H. felis* infection, following which *Nfkb2*^{-/-} mice were almost entirely protected from gastric epithelial pathology. This contrast suggests that the effects of *Nfkb1* and *Nfkb2* deletion on gastric epithelial pathology are mediated through different mechanisms.

Materials and Methods

Mice. All murine procedures were performed at the University of Liverpool Biomedical Services Unit in a specific pathogen-free research facility under appropriate UK Home Office licensing and following University of Liverpool Research Ethics Committee approval.

Animals were maintained with a standard 12-h light/dark cycle and received standard rodent chow and water *ad libitum* throughout the experimental procedures. Female C57BL/6 WT (WT) mice were purchased from Charles River (Margate, UK) and maintained for a minimum 7-day acclimatization prior to use in experiments. *Nfkb1*^{-/-}, *Nfkb2*^{-/-} and *c-Rel*^{-/-} mice (as previously described²⁷) were bred and maintained on a C57BL/6 genetic background at the University of Liverpool.

Animal procedures. Tamoxifen (Cayman Chemicals, Cambridge Biosciences, Cambridge, UK) was prepared as previously described in ethanol and corn oil.⁸ Groups of at least 5 female mice aged 10–12 weeks were administered either 150 mg/kg tamoxifen or vehicle via a single intraperitoneal injection. Seventy-two hours later, animals were killed by cervical dislocation, and gastric tissues were harvested for histology.

Whole-body γ -irradiation was performed by exposure to a Caesium-137 source in a GammaCell closed source irradiator. Groups of at least 6 female mice aged 10–12 weeks were exposed to a single 12 Gy fraction of γ -irradiation. Animals were returned to standard housing conditions prior to being killed at 6 or 48 h after procedure by cervical dislocation. Gastric tissues were harvested for histology. In a separate experiment, similar groups of three mice were treated identically prior to cervical dislocation at 6 h. From these animals, the luminal surface of the stomach was scraped to generate gastric mucosa-enriched samples and flash-frozen in liquid nitrogen prior to nucleic acid extraction.

Immunohistochemistry. Standard immunohistochemical techniques were adopted throughout. Heat-induced epitope retrieval was performed for all antigens in sodium citrate buffer, pH 6.0. Primary antibodies used were rabbit anti-H⁺/K⁺ATPase (Santa Cruz Biotechnology, Heidelberg, Germany, SC-84304), rabbit anti-Ki67 (AB16667, AbCam, Cambridge, UK) and rabbit anti- γ H2AX (#9718, Cell Signalling, New England Biolabs, Hertfordshire, UK). Secondary detection of all antibodies was performed using IMMpress anti-Rabbit polymer (Vector Laboratories, Peterborough, UK) and SigmaFast 3,3'-diaminobenzidine (Sigma-Aldrich, Dorset, UK).

Quantitative histology. Quantitative histology was performed using previously validated cell positional scoring systems for H+E-stained and immunohistochemically stained tissues. Briefly, well-oriented gastric glands were identified and individual cells were scored morphologically, or based on positive immunostaining, starting with cell position 1 at the base of the gland and extending up the gland to the luminal surface. Each gland unit scored from base to apex of the gland is described as a hemigland; for each gastric corpus section, a total of 30 hemiglands

were scored.²⁸ Visual analog scoring of gastric preneoplastic lesions was performed as previously described by Rogers *et al.*¹¹ Cleaved-caspase-3 immunostaining was quantified based on the number of positively stained cells per high-powered field. For this score, 10 non-overlapping fields of gastric mucosa were visualized using a $\times 40$ objective per tissue section. The number of positively stained cells per high-power field was counted, and mean score per section was calculated.

Quantitative real-time PCR. Total RNA was extracted and reverse transcribed using the Roche Highpure RNA Tissue Kit and Transcriptor Reverse Transcription Kits, respectively. Real-Time PCR was performed on a Roche LightCycler 488 instrument, and assays were designed using the Roche Universal Probe Library. Details of primers, probes and amplicons are included in Table 1. All real-time PCR reagents were sourced from Roche UK, Burgess Hill, UK.

Statistics. Statistical analyses were performed using GraphPad Prism 7 (Graphpad Software, La Jolla, CA, USA). Data were analyzed with two-tailed, two-way Student's *t*-test or two-way ANOVA and Dunnett's *post hoc* analyses as appropriate. Differences in cell positional distributions were assessed using a modified median test as previously described.²⁹

Conflict of Interest

The authors declare no conflict of interest.

Acknowledgements. We thank Dr Jorge Caamano and Bristol Myers Squibb for donating the *Nfkb2*^{-/-} mouse colony and Dr Jorge Caamano for providing the colonies of *Nfkb1*^{-/-} and *c-Rel*^{-/-} mice. MDB was funded by a CORE/British Society of Gastroenterology Development Grant and Wellcome Trust/University of Liverpool Institutional Strategic Support Fund grant under grant agreement number: 097826/Z/11/Z. MDB and DMP were supported by a North West Cancer Research project grant. MDB, JMW, RH and DMP were supported by the European Council's Seventh Framework Programme (FP7/2007-2013) under grant agreement number 305564 (SysmedIBD).

- Graham DY. *Helicobacter pylori* update: gastric cancer, reliable therapy, and possible benefits. *Gastroenterology* 2015; **148**: 719–731 e713.
- Correa P, Haenszel W, Cuello C, Tannenbaum S, Archer M. A model for gastric cancer epidemiology. *Lancet* 1975; **306**: 58–60.
- Fox JG, Sheppard BJ, Dangler CA, Whary MT, Ihrig M, Wang TC. Germ-line p53-targeted disruption inhibits *Helicobacter*-induced premalignant lesions and invasive gastric carcinoma through down-regulation of Th1 proinflammatory responses. *Cancer Res* 2002; **62**: 696–702.
- Burkitt MD, Duckworth CA, Williams JM, Pritchard DM. *Helicobacter pylori*-induced gastric pathology: insights from in vivo and ex vivo models. *Dis Models Mech* 2017; **10**: 89–104.
- Merga YJ, O'Hara A, Burkitt MD, Duckworth CA, Probert CS, Campbell BJ *et al.* Importance of the alternative NF-kappaB activation pathway in inflammation-associated gastrointestinal carcinogenesis. *Am J Physiol Gastrointest Liver Physiol* 2016; **310**: G1081–G1090.
- Burkitt MD, Williams JM, Duckworth CA, O'Hara A, Hamedi A, Varro A *et al.* Signaling mediated by the NF-kappaB sub-units NF-kappaB1, NF-kappaB2 and c-Rel differentially regulate *Helicobacter felis*-induced gastric carcinogenesis in C57BL/6 mice. *Oncogene* 2013; **32**: 5563–5573.

7. Williams JM, Duckworth CA, Watson AJ, Frey MR, Miguel JC, Burkitt MD *et al*. A mouse model of pathological small intestinal epithelial cell apoptosis and shedding induced by systemic administration of lipopolysaccharide. *Dis Models Mech* 2013; **6**: 1388–1399.
8. Huh WJ, Khurana SS, Geahlen JH, Kohli K, Waller RA, Mills JC. Tamoxifen induces rapid, reversible atrophy, and metaplasia in mouse stomach. *Gastroenterology* 2012; **142**: 21–24 e27.
9. Sigal M, Rothenberg ME, Logan CY, Lee JY, Honaker RW, Cooper RL *et al*. *Helicobacter pylori* activates and expands Lgr5(+) stem cells through direct colonization of the gastric glands. *Gastroenterology* 2015; **148**: e1321.
10. Saenz JB, Burclaff J, Mills JC. Modeling murine gastric metaplasia through tamoxifen-induced acute parietal cell loss. *Methods Mol Biol* 2016; **1422**: 329–339.
11. Rogers AB. Histologic scoring of gastritis and gastric cancer in mouse models. *Methods Mol Biol* 2012; **921**: 189–203.
12. Phillips DH. Understanding the genotoxicity of tamoxifen? *Carcinogenesis* 2001; **22**: 839–849.
13. Hu R, Hilakivi-Clarke L, Clarke R. Molecular mechanisms of tamoxifen-associated endometrial cancer (review). *Oncol Lett* 2015; **9**: 1495–1501.
14. Przemek SMC, Duckworth CA, Pritchard DM. Radiation-induced gastric epithelial apoptosis occurs in the proliferative zone and is regulated by p53, bak, bax, and bcl-2. *Am J Physiol Gastrointest Liver Physiol* 2007; **292**: G620–G627.
15. Wang CY, Mayo MW, Korneluk RG, Goeddel DV, Baldwin AS Jr.. NF-kappaB antiapoptosis: induction of TRAF1 and TRAF2 and c-IAP1 and c-IAP2 to suppress caspase-8 activation. *Science* 1998; **281**: 1680–1683.
16. Van Themsche C, Chaudhry P, Leblanc V, Parent S, Asselin E. XIAP gene expression and function is regulated by autocrine and paracrine TGF-beta signaling. *Mol Cancer* 2010; **9**: 216.
17. Liu F, Bardhan K, Yang D, Thangaraju M, Ganapathy V, Waller JL *et al*. NF-kappaB directly regulates Fas transcription to modulate Fas-mediated apoptosis and tumor suppression. *J Biol Chem* 2012; **287**: 25530–25540.
18. Novac N, Baus D, Dostert A, Heinzel T. Competition between glucocorticoid receptor and NFkappaB for control of the human FasL promoter. *FASEB J* 2006; **20**: 1074–1081.
19. Wang X, Belguise K, Kersual N, Kirsch KH, Mineva ND, Galtier F *et al*. Oestrogen signalling inhibits invasive phenotype by repressing RelB and its target BCL2. *Nat Cell Biol* 2007; **9**: 470–478.
20. Yu M, Tong X, Qi B, Qu H, Dong S, Yu B *et al*. Berberine enhances chemosensitivity to irinotecan in colon cancer via inhibition of NFkappaB. *Mol Med Rep* 2014; **9**: 249–254.
21. Iannetti A, Ledoux AC, Tudhope SJ, Sellier H, Zhao B, Mowla S *et al*. Regulation of p53 and Rb links the alternative NF-kappaB pathway to EZH2 expression and cell senescence. *PLoS Genet* 2014; **10**: e1004642.
22. Burclaff J, Osaki LH, Liu D, Goldenring JR, Mills JC. Targeted apoptosis of parietal cells is insufficient to induce metaplasia in stomach. *Gastroenterology* 2017; **152**: 762–766 e767.
23. Wang Y, Meng A, Lang H, Brown SA, Konopa JL, Kindy MS *et al*. Activation of nuclear factor κ B in vivo selectively protects the murine small intestine against ionizing radiation-induced damage. *Cancer Res* 2004; **64**: 6240–6246.
24. Poltz R, Naumann M. Dynamics of p53 and NF-kappaB regulation in response to DNA damage and identification of target proteins suitable for therapeutic intervention. *BMC Syst Biol* 2012; **6**: 125.
25. Rehemtulla A, Hamilton CA, Chinnaiyan AM, Dixit VM. Ultraviolet radiation-induced apoptosis is mediated by activation of CD-95 (Fas/APO-1). *J Biol Chem* 1997; **272**: 25783–25786.
26. Bang B, Gniatecki R, Larsen JK, Baadsgaard O, Skov L. In vivo UVB irradiation induces clustering of Fas (CD95) on human epidermal cells. *Exp Dermatol* 2003; **12**: 791–798.
27. Burkitt MD, Hanedi AF, Duckworth CA, Williams JM, Tang JM, O'Reilly LA *et al*. NF-kappaB1, NF-kappaB2 and c-Rel differentially regulate susceptibility to colitis-associated adenoma development in C57BL/6 mice. *J Pathol* 2015; **236**: 326–336.
28. Duckworth CA, Burkitt MD, Williams JM, Parsons BN, Tang JM, Pritchard DM. Murine models of *Helicobacter (pylori or felis)*-associated gastric cancer. *Curr Protoc Pharmacol* 2015; **69**: 14.34.11–14.34.35.
29. Ijiri K, Potten CS. Response of intestinal cells of differing topographical and hierarchical status to ten cytotoxic drugs and five sources of radiation. *Br J Cancer* 1983; **47**: 175–185.



Cell Death and Disease is an open-access journal published by **Nature Publishing Group**. This work is licensed under a **Creative Commons Attribution 4.0 International License**. The images or other third party material in this article are included in the article's Creative Commons license, unless indicated otherwise in the credit line; if the material is not included under the Creative Commons license, users will need to obtain permission from the license holder to reproduce the material. To view a copy of this license, visit <http://creativecommons.org/licenses/by/4.0/>

© The Author(s) 2017

Supplementary Information accompanies this paper on Cell Death and Disease website (<http://www.nature.com/cddis>)