

# Chloride channels are necessary for full platelet phosphatidylserine exposure and procoagulant activity

MT Harper<sup>\*,1</sup> and AW Poole<sup>\*,1</sup>

Platelets enhance thrombin generation at sites of vascular injury by exposing phosphatidylserine during necrosis-like cell death. Anoctamin 6 (Ano6) is required for  $\text{Ca}^{2+}$ -dependent phosphatidylserine exposure and is defective in patients with Scott syndrome, a rare bleeding disorder. Ano6 may also form  $\text{Cl}^-$  channels, though the role of  $\text{Cl}^-$  fluxes in platelet procoagulant activity has not been explored. We found that  $\text{Cl}^-$  channel blockers or removal of extracellular  $\text{Cl}^-$  inhibited agonist-induced phosphatidylserine exposure. However, this was not due to direct inhibition of  $\text{Ca}^{2+}$ -dependent scrambling since  $\text{Ca}^{2+}$  ionophore-induced phosphatidylserine exposure was normal. This implies that the role of Ano6 in  $\text{Ca}^{2+}$ -dependent PS exposure is likely to differ from any putative function of Ano6 as a  $\text{Cl}^-$  channel. Instead,  $\text{Cl}^-$  channel blockade inhibited agonist-induced  $\text{Ca}^{2+}$  entry. Importantly,  $\text{Cl}^-$  channel blockers also prevented agonist-induced membrane hyperpolarization, resulting in depolarization. We propose that  $\text{Cl}^-$  entry through  $\text{Cl}^-$  channels is required for this hyperpolarization, maintaining the driving force for  $\text{Ca}^{2+}$  entry and triggering full phosphatidylserine exposure. This demonstrates a novel role for  $\text{Cl}^-$  channels in controlling platelet death and procoagulant activity.

*Cell Death and Disease* (2013) 4, e969; doi:10.1038/cddis.2013.495; published online 19 December 2013

**Subject Category:** Experimental Medicine

The central role of blood platelets in arterial thrombosis critically depends on their ability to promote localized thrombin generation.<sup>1</sup> High, sustained  $\text{Ca}^{2+}$  signals trigger necrotic cell death in platelets resulting in phosphatidylserine (PS) exposure in the outer leaflet of the plasma membrane.<sup>2</sup> Platelet PS forms a procoagulant surface that accelerates thrombin generation. It is currently believed that sustained intracellular  $\text{Ca}^{2+}$  signalling activates a nonspecific phospholipid 'scramblase' while inhibiting an inward aminophospholipid translocase ('flippase').

Ano6 (gene *TMEM16F*) is a key regulator of calcium-dependent PS exposure.<sup>3</sup> Loss-of-function mutations in *TMEM16F* have been identified in two Scott syndrome patients,<sup>3,4</sup> who have defective calcium-dependent PS exposure in platelets, erythrocytes and B lymphocytes.<sup>5</sup> However, how Ano6 contributes to PS scrambling is not clear.<sup>6</sup> Several groups have shown that Ano6 acts as a  $\text{Cl}^-$  channel regulated by  $\text{Ca}^{2+}$  or cell volume.<sup>7–10</sup> However, it is not immediately clear how PS exposure could be directly regulated by  $\text{Cl}^-$  conductance.

In this study, we have used platelets to test whether  $\text{Cl}^-$  channels in principle can regulate  $\text{Ca}^{2+}$ -dependent PS exposure. We find that  $\text{Cl}^-$  channel blockers do not affect PS exposure in response to a  $\text{Ca}^{2+}$  ionophore, implying that  $\text{Cl}^-$  conductances are not necessary for platelet PS exposure. However, we also found that  $\text{Cl}^-$  channel blockers

reduce PS exposure in response to physiological platelet activators.  $\text{Cl}^-$  channels are required for plasma membrane hyperpolarization in stimulated platelets, which in turn is required for sustained  $\text{Ca}^{2+}$  signalling. These data demonstrate a novel role for  $\text{Cl}^-$  channels in platelet death and procoagulant activity.

## Results

When platelets were co-stimulated by thrombin and collagen-related peptide (CRP, an agonist of GPVI (glycoprotein VI)), a substantial fraction exposed PS on their surface, as detected by annexin V binding (Figures 1a and b). To test whether  $\text{Cl}^-$  channels have a role in this, three structurally distinct  $\text{Cl}^-$  channel blockers were tested. NPPB blocks multiple  $\text{Cl}^-$  channels.<sup>7,11</sup> T16Ainh-A01 was identified in a screen for *TMEM16A* inhibitors.<sup>12</sup> CaCCinh-A01 blocks  $\text{Ca}^{2+}$ -activated  $\text{Cl}^-$  channels<sup>13</sup> and *TMEM16F*-dependent  $\text{Cl}^-$  currents.<sup>7,14</sup> Each inhibitor significantly reduced thrombin-plus-CRP-induced annexin V binding (Figure 1a), indicating that  $\text{Cl}^-$  channels are necessary for full platelet PS exposure.

Thrombin-plus-CRP-induced PS exposure was also significantly reduced in the absence of extracellular  $\text{Cl}^-$  (Figure 1b;  $\text{Cl}^-$  replaced by equimolar gluconate). This demonstrates that the effect of the  $\text{Cl}^-$  channel blockers is not a nonspecific effect on other ion channels. Together,

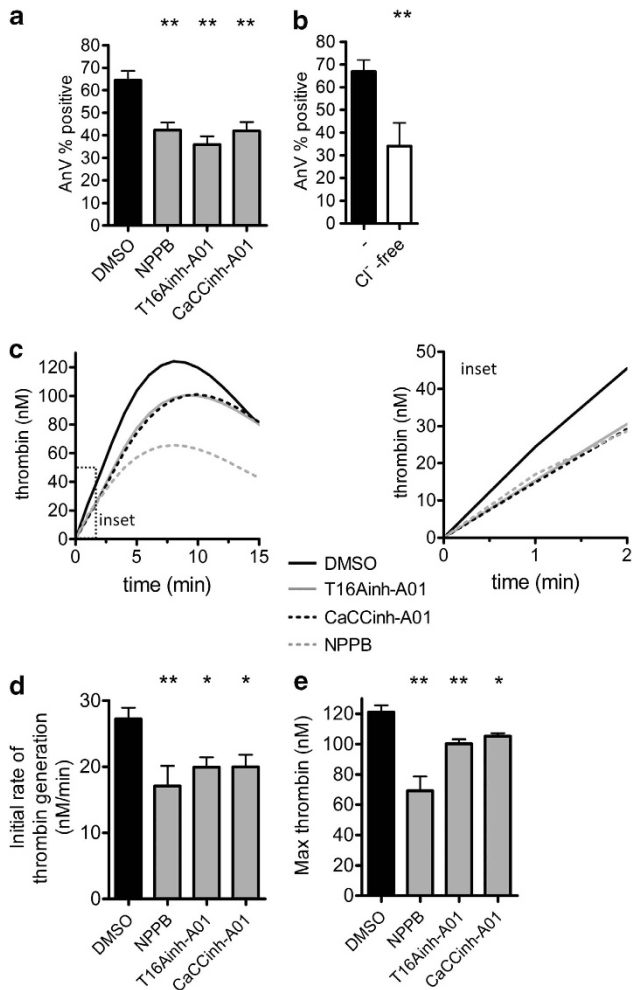
<sup>1</sup>School of Physiology and Pharmacology, Bristol Heart Institute, Medical Sciences Building, University of Bristol, Bristol BS8 1TD, UK

\*Corresponding authors: MT Harper or AW Poole, School of Physiology and Pharmacology, University Walk, Bristol BS8 1TD, UK. Tel: +44 117 3311435; Fax: +44 117 332288; E-mail: m.harper@bris.ac.uk or a.poole@bris.ac.uk

**Keywords:** necrosis; coagulation; platelets; thrombosis; chloride channels

**Abbreviations:** Ano6, Anoctamin 6; AnV, annexin V;  $[\text{Ca}^{2+}]_i$ , intracellular calcium concentration; CRP, cross-linked collagen-related peptide; DMSO, dimethyl sulfoxide; FITC, fluorescein isothiocyanate; PRP, platelet-rich plasma; PS, phosphatidylserine

Received 05.8.13; revised 16.10.13; accepted 08.11.13; Edited by M Piacentini



**Figure 1** Chloride channel blockers partially inhibit the platelet procoagulant response. (a, b) Washed platelets were stimulated with thrombin (1 U/ml) and CRP (5  $\mu$ g/ml) for 10 min and the level of phosphatidylserine exposure determined by annexin V (AnV) binding and flow cytometry. Histograms depict mean  $\pm$  S.E.M. ( $n = 4-9$ ;  $P < 0.01$ ). (a) Platelets were treated with the indicated chloride channel blockers, or equivalent volume of DMSO as control, for 5 min before stimulation. (b) Platelets were suspended in normal NaCl-based buffer (-) or Na-gluconate-based buffer (Cl<sup>-</sup> free). (c-e) The ability of CRP-stimulated platelets to support thrombin generation in plasma was determined using a fluorescent thrombin substrate, as described in Materials and Methods. The traces from an individual experiment (c) are representative of four independent experiments. The right panel shows the first two minutes. (d, e) The initial rate of thrombin generations and peak thrombin generation are quantified ( $n = 4$ ; \* $P < 0.05$ ; \*\* $P < 0.01$ )

these data indicate that Cl<sup>-</sup> entry through Cl<sup>-</sup> channels is required for full agonist-induced PS exposure.

The role of Cl<sup>-</sup> channels in thrombin generation in platelet-rich plasma was determined by the calibrated automated thrombogram (CAT) method.<sup>15</sup> Platelets were stimulated with CRP, and thrombin generation was initiated with tissue factor and CaCl<sub>2</sub>. Pre-treatment with Cl<sup>-</sup> channel blockers significantly reduced and slowed thrombin generation, indicating an important physiological role for these channels (Figures 1c-e).

The Cl<sup>-</sup> channel blockers did not significantly inhibit thrombin-induced P-selectin expression (a marker of

$\alpha$ -granule secretion). Thrombin-induced  $\alpha_{IIb}\beta_3$  activation was not affected by T16Ainh-A01 and CaCCinh-A01 but was partially reduced by NPPB. Another commonly used Cl<sup>-</sup> channel blocker, DIDS, substantially reduced P-selectin expression and almost abolished  $\alpha_{IIb}\beta_3$  activation, suggesting that it may have substantial off-target effects, and so was not used further in this study (Figure 2). The greater effect of NPPB on peak thrombin generation may reflect its additional effect on  $\alpha_{IIb}\beta_3$  activation as signalling through  $\alpha_{IIb}\beta_3$  is reported to regulate thrombin generation.<sup>16-18</sup>

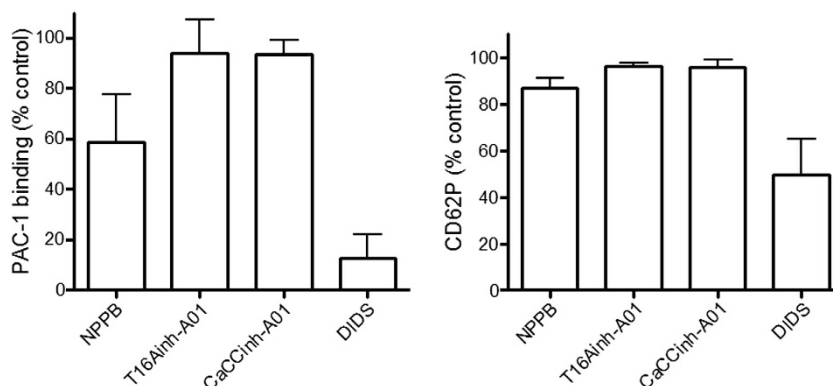
In contrast to their inhibition of thrombin-plus-CRP-induced PS exposure, the Cl<sup>-</sup> channel blockers did not substantially inhibit PS exposure induced by the Ca<sup>2+</sup> ionophore, A23187 (Figure 3). This suggests that Cl<sup>-</sup> channels may regulate Ca<sup>2+</sup> signalling rather than the exposure of PS in response to a sustained increase in intracellular Ca<sup>2+</sup>.

Platelet stimulation with thrombin-plus-CRP rapidly triggers a sustained increase in [Ca<sup>2+</sup>]<sub>i</sub>. This was substantially inhibited by the Cl<sup>-</sup> channel blockers (Figure 4a). Agonist-induced Ca<sup>2+</sup> signalling in Cl<sup>-</sup> free medium was also substantially reduced (Figure 4b). Both the rapid peak increase and the area under the curve (AUC) were inhibited (Figures 4c and d). Agonist-induced Ca<sup>2+</sup> signals are controlled by multiple pathways including Ca<sup>2+</sup> release from intracellular Ca<sup>2+</sup> stores and Ca<sup>2+</sup> entry through Ca<sup>2+</sup> channels.<sup>19</sup> Cl<sup>-</sup> channel blockers had no effect on thrombin-plus-CRP-induced Ca<sup>2+</sup> signalling when EGTA was added to chelate extracellular Ca<sup>2+</sup>, indicating that intracellular Ca<sup>2+</sup> release is unaffected (Figure 4e). In contrast, divalent cation entry, as monitored by Mn<sup>2+</sup> quench, was substantially inhibited (Figure 4f), suggesting that Cl<sup>-</sup> fluxes regulate Ca<sup>2+</sup> entry.

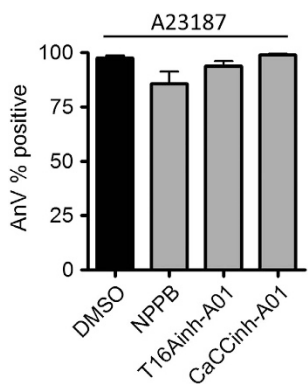
Several platelet Ca<sup>2+</sup> entry channels have been described including store-operated Ca<sup>2+</sup> entry, involving Orai1,<sup>20,21</sup> and TRPC-dependent, store-independent Ca<sup>2+</sup> entry.<sup>22,23</sup> Electrophysiological recordings have demonstrated that Orai1 and TRPCs are sensitive to changes in membrane potential.<sup>24,25</sup> Depolarization reduces Ca<sup>2+</sup> entry through these channels, whereas hyperpolarization promotes Ca<sup>2+</sup> entry. Cl<sup>-</sup> fluxes are likely to affect the membrane potential. We monitored membrane potential by using the potential-sensitive fluorescent dye, DiBAC<sub>4</sub>(3), which shows a decrease in fluorescence upon hyperpolarization from the resting potential, whereas depolarization gives an increase in fluorescence.<sup>26</sup> When platelets were stimulated with thrombin-plus-CRP, DiBAC<sub>4</sub>(3) fluorescence initially decreased, indicating hyperpolarization, followed by a small, gradual increase in fluorescence (Figure 4g). When Cl<sup>-</sup> channels were blocked the early hyperpolarization was completely lost (Figures 4g and h), and an underlying depolarization was revealed. The same effect was seen in Cl<sup>-</sup> free medium (Figure 4h). These data indicate that the early hyperpolarization is dependent on Cl<sup>-</sup> entry through Cl<sup>-</sup> channels.

## Discussion

Although Ano6 is critically involved in Ca<sup>2+</sup>-dependent PS exposure,<sup>3,27</sup> how it does this is not known. Several groups have shown that Ano6 can act as a Cl<sup>-</sup> channel in a range of cells.<sup>7,14</sup> If Ano6 is acting as a Cl<sup>-</sup> channel in platelets, then



**Figure 2** Effect of  $\text{Cl}^-$  channel blockers on integrin  $\alpha_{\text{IIb}}\beta_3$  activation and  $\alpha$ -granule secretion. Washed platelets were treated with the indicated  $\text{Cl}^-$  channel blockers (or DMSO) as control then stimulated with thrombin (1 U/ml) in the presence of FITC-conjugated PAC-1 antibody (left panel) or FITC-conjugated anti-CD62P antibody (right panel). Platelet staining was determined by flow cytometry and expressed as percentage of fluorescent signal in DMSO-treated, thrombin-stimulated platelets. ( $n = 3-4$ ). Histograms depict mean  $\pm$  S.E.M.



**Figure 3** Chloride channels are not required for  $\text{Ca}^{2+}$ -dependent PS exposure. Washed platelets were stimulated with the  $\text{Ca}^{2+}$  ionophore, A23187 (10  $\mu\text{M}$ ), and annexin V (AnV) binding was monitored ( $n = 4$ ). Histograms depict mean  $\pm$  S.E.M.

$\text{Cl}^-$  conductance might somehow regulate  $\text{Ca}^{2+}$ -dependent PS exposure. In this study we have tested whether  $\text{Cl}^-$  channels (whether comprising Ano6 or other proteins) can regulate platelet PS exposure. We conclude that although  $\text{Cl}^-$  channels are not required for platelets to expose PS in response to increased  $[\text{Ca}^{2+}]_i$ , they have a novel role in supporting platelet PS exposure by promoting  $\text{Ca}^{2+}$  entry, resulting in more rapid thrombin generation.

We propose that  $\text{Cl}^-$  entry through  $\text{Cl}^-$  channels is essential for platelet hyperpolarization. This maintains the driving force for  $\text{Ca}^{2+}$  entry through plasma membrane  $\text{Ca}^{2+}$  channels, leading to a sustained increase in  $[\text{Ca}^{2+}]_i$ . This is necessary to trigger full PS exposure and promote thrombin generation. In the absence of  $\text{Cl}^-$ -dependent hyperpolarization, agonist stimulation leads to depolarization, probably due to  $\text{Na}^+$  and  $\text{Ca}^{2+}$  entry. This reduces further  $\text{Ca}^{2+}$  entry, limits PS exposure and slows the rate of thrombin generation. In this way,  $\text{Cl}^-$  entry indirectly regulates PS exposure. The effect of preventing  $\text{Cl}^-$  entry is specific to  $\text{Ca}^{2+}$  entry as  $\text{Ca}^{2+}$  release from intracellular stores was not affected.

The molecular identities of platelet  $\text{Cl}^-$  channels involved are unknown. Ano6 remains a possibility if, as shown in some

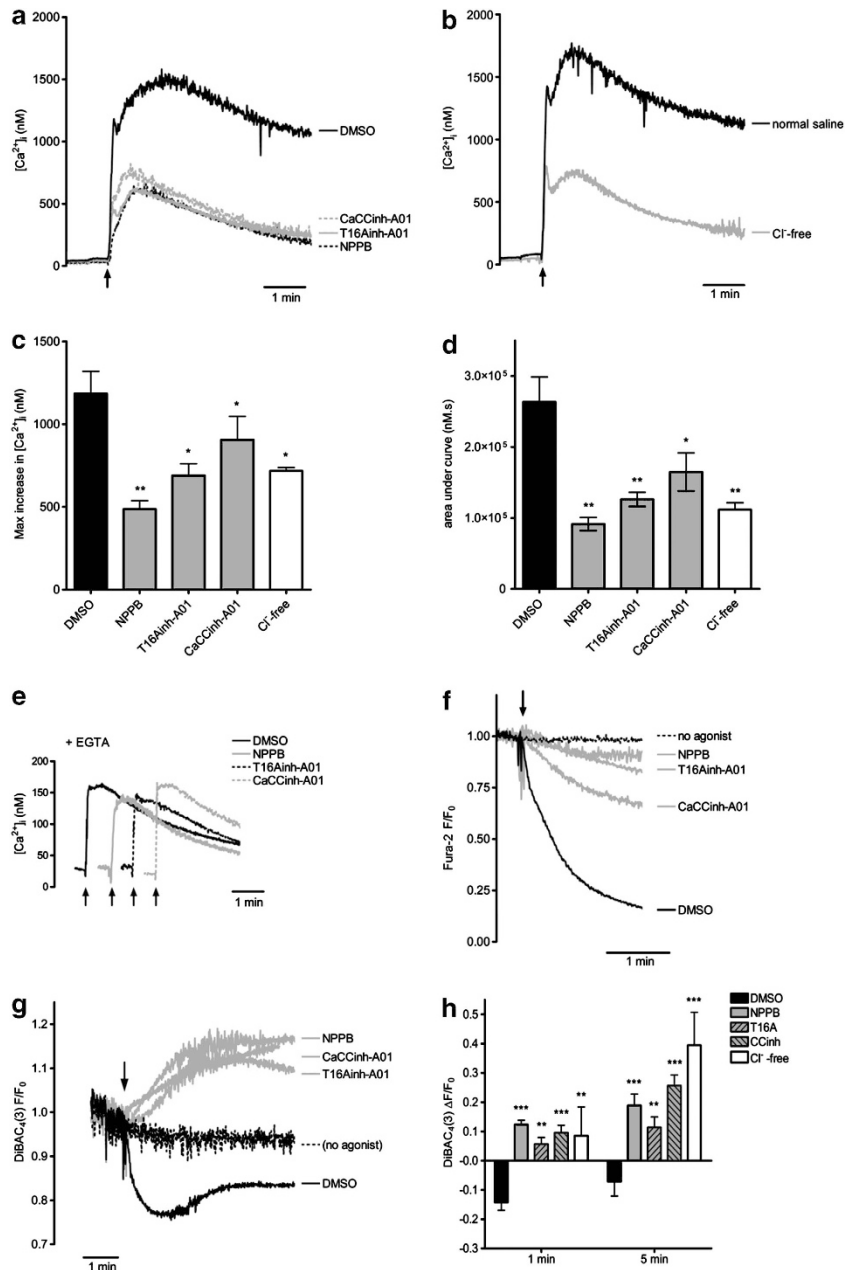
cells, Ano6 is a component of the VSOR  $\text{Cl}^-$  channel.<sup>7</sup> Conversely, it has been proposed that Ano6 is in fact a small conductance cation channel,<sup>27</sup> in which case the identity of the platelet  $\text{Cl}^-$  channel remains to be discovered.

Importantly, our data suggest that PS scrambling activity does not directly require  $\text{Cl}^-$  entry. Although our data show that  $\text{Cl}^-$  channels are important in platelet PS exposure, blocking  $\text{Cl}^-$  conductance does not completely abolish agonist-induced PS exposure and platelet-dependent thrombin generation and has no effect on A23187-induced PS exposure. A similar conclusion has recently been reached in lymphocytes by Kmit *et al.*,<sup>14</sup> who found that  $\text{Cl}^-$  channel blockers had no effect on ionomycin-induced PS exposure. This contrasts with the loss-of-function mutations in TMEM16F and absent  $\text{Ca}^{2+}$ -dependent PS exposure in Scott syndrome patients. Importantly, this implies that the role of Ano6 in  $\text{Ca}^{2+}$ -dependent PS exposure in platelets and lymphocytes is likely to be different to any putative function of Ano6 as a  $\text{Cl}^-$  channel.

#### Materials and Methods

**Materials.** A23187, NPPB, DIDS and T16Ainh-A01 were from Tocris (Bristol, UK). CaCCinh-A01 was from Calbiochem (Nottingham, UK). Fura-2 AM (acetoxymethyl ester) was from Teflabs (Austin, TX, USA). FITC-annexin V was from Abcam (Cambridge, UK). FITC-conjugated anti-CD62P antibody and FITC-PAC-1 antibody were from BD Biosciences (Oxford, UK). DiBAC<sub>4</sub>(3) was from Life Technologies (Paisley, UK). Cross-linked collagen-related peptide (CRP) was from Prof. Richard Farndale (Department of Biochemistry, University of Cambridge, UK). Tissue factor (Dade Innovin) was from Seimens Healthcare (Camberley, UK). The fluorescent thrombin substrate, Z-Gly-Gly-Arg-AMC HCl, was from Bachem (Weil am Rhein, Germany). The thrombin calibrator was from Diagnostica Stago (Theale, UK). All other reagents were from Sigma (Poole, UK), and were of analytical grade.

**Platelet preparation.** Blood was obtained from healthy drug-free volunteers with approval from the local Research Ethics Committee of the University of Bristol, UK; informed, written consent was obtained in accordance with the Declaration of Helsinki. All donors reported that they had not taken any drugs known to affect platelet function (e.g., aspirin) for 10 days before donation. Fura-2-loaded human platelets were prepared essentially as previously described.<sup>19</sup> Platelets were resuspended in modified Tyrodes-HEPES (135 mM NaCl, 3 mM KCl, 12 mM 10 mM Hepes, 5 mM glucose, 1 mM  $\text{MgCl}_2$  and 0.02 U/ml apyrase (grade VII), pH 7.3) to a density of  $1 \times 10^9/\text{ml}$ . Unless indicated otherwise, all experiments were performed in the presence of 1 mM extracellular  $\text{CaCl}_2$ .



**Figure 4** Chloride channels mediate platelet membrane hyperpolarization and maintain  $Ca^{2+}$  entry. Intracellular  $Ca^{2+}$  concentration was monitored in fura-2-loaded human platelets (a–e). Platelets were stimulated with thrombin-plus-CRP as indicated by the arrows. Traces are representative of five independent experiments. The maximum increase in  $[Ca^{2+}]_i$  above basal and the area under the curve are quantified in (c) and (d), respectively ( $n = 5$ ; \* $P < 0.05$ ; \*\* $P < 0.01$ ). (a, c) Platelets were treated with the indicated chloride channel blockers, or equivalent volume of DMSO as control, for 5 min before stimulation. (b, d) Platelets were suspended in normal NaCl-based buffer (–) or in Na-gluconate-based buffer (Cl<sup>–</sup> free). (e) Platelets were stimulated in the absence of extracellular  $Ca^{2+}$  (1 mM EGTA added). (f)  $Mn^{2+}$  entry into fura-2-loaded platelets and quench of fura-2 fluorescence was used to monitor divalent cation entry. (g, h) Platelets were stimulated with thrombin and CRP in the presence of DiBAC<sub>4</sub>(3) in order to monitor membrane potential. Representative traces are shown in (g) and the mean changes in fluorescence (± S.E.M.) at 1 and 5 min after stimulation are given in (h) ( $n = 6$ ; \* $P < 0.05$ ; \*\* $P < 0.01$ ; \*\*\* $P < 0.001$ )

**Thrombin generation.** Thrombin generation was monitored in normalized PRP ( $1.5 \times 10^8$  platelets/ml). PRP was stimulated with CRP for 5 min. Thrombin generation was triggered with tissue factor/ $CaCl_2$  cleavage of the substrate Z-Gly-Gly-Arg-AMC HCl measured by the thrombogram method in a Fluoroskan Ascent microplate reader at 37°C. Thrombin concentrations were determined by using a Thrombin Calibrator (Stago) following correction for the inner filter effect and substrate consumption as described by Hemker *et al.*<sup>15</sup>

**Flow cytometry.** Annexin V-FITC was used to detect surface PS exposure. FITC-conjugated anti-CD62P antibody was used to monitor  $\alpha$ -granule secretion and FITC-conjugated PAC-1 antibody was used to monitor  $\alpha_{IIb}\beta_3$  activation. Platelets ( $5 \times 10^7$ /ml) were stimulated in the presence of  $CaCl_2$  (1 mM) for 10 min then diluted in Tyrode's-HEPES buffer containing 2 mM  $CaCl_2$  and analysed immediately. Fluorescence was detected by flow cytometry, with platelets gated by their forward and side scatter profile. Analysis of 20 000 platelets was performed



using a Becton Dickinson FACScalibur (Oxford, UK). Data were analysed using WinMDI version 2.8 (The Scripps Research Institute, San Diego, CA, USA).

**Calcium measurements.** Fura-2 fluorescence from magnetically stirred cuvettes was monitored at 37°C using a Hitachi F-4500 (Hitachi High-Technologies, Maidenhead, UK) spectrofluorimeter with fluorescence excitation made at 340 and 380 nm, and emission at 510 nm. The ratio of emissions ( $F_{340}:F_{380}$ ) was calibrated in terms of  $[Ca^{2+}]_i$ .<sup>28</sup> Calibrations were also performed in the presence of  $Cl^-$  channel blockers to account for any effects on fura-2 fluorescence.

**Mn<sup>2+</sup> entry.** Fura-2 fluorescence was excited at the isosbestic wavelength (359 nm) and emission detected at 510 nm. Autofluorescence was subtracted and fluorescence was expressed relative to the initial fluorescence ( $F/F_0$ ). Mn<sup>2+</sup> entry was detected as a quench of fura-2 fluorescence.

**Membrane potential measurement.** Platelet membrane potential was monitored with the potential-sensitive fluorescent dye, DiBAC<sub>4</sub>(3). Platelets were incubated with DiBAC<sub>4</sub>(3) (100 nM; 30 min) prior to stimulation. Fluorescence was excited at 490 nm and emission detected at 590 nm. Fluorescence was expressed relative to the initial value ( $F/F_0$ ).

**Data analyses.** Mean data are presented with standard errors; the number of replicates of each experiment, representing independent experiments from platelet preparations from different donors is reported in the figure legends. Data were analysed by one-way ANOVA, with Dunnett's test for multiple comparisons.  $P < 0.05$  was considered statistically significant.

### Conflict of Interest

The authors declare no conflict of interest.

**Acknowledgements.** This work was supported by the British Heart Foundation (Programme Grant RG/10/006/28299; MTH, AWP).

- Jackson SP. Arterial thrombosis - insidious, unpredictable and deadly. *Nat Med* 2011; **17**: 1423–1436.
- Jackson SP, Schoenwaelder SM. Procoagulant platelets: are they necrotic? *Blood* 2010; **116**: 2011–2018.
- Suzuki J, Umeda M, Sims PJ, Nagata S. Calcium-dependent phospholipid scrambling by TMEM16F. *Nature* 2010; **468**: 834–838.
- Castoldi E, Collins PW, Williamson PL, Bevers EM. Compound heterozygosity for 2 novel TMEM16F mutations in a patient with Scott syndrome. *Blood* 2011; **117**: 4399–4400.
- Zwaal RF, Comfurius P, Bevers EM. Scott syndrome, a bleeding disorder caused by defective scrambling of membrane phospholipids. *Biochem Biophys Acta* 2004; **1636**: 119–128.
- Kunzelmann K, Nilius B, Owsianik G, Schreiber R, Ousingsawat J, Sirianant L *et al*. Molecular functions of anoctamin 6 (TMEM16F): a chloride channel, cation channel, or phospholipid scramblase? *Pflugers Arch*; e-pub ahead of print 8 June 2013; doi:10.1007/s00424-013-1305-1.
- Martins JR, Faria D, Kongsuphol P, Reisch B, Schreiber R, Kunzelmann K. Anoctamin 6 is an essential component of the outwardly rectifying chloride channel. *Proc Natl Acad Sci USA* 2011; **108**: 18168–18172.
- Tian Y, Schreiber R, Kunzelmann K. Anoctamins are a family of Ca<sup>2+</sup>-activated Cl<sup>-</sup> channels. *J Cell Sci* 2012; **125**: 4991–4998.
- Owsianik G, Prenen J, Hermans C, Eggermont J, Nilius B. Functional characterization of TMEM16 anion channels. *FASEB J (Abstract)* 2010; **608**: 12.
- Sztejn K, Schmid E, Nurbaeva MK, Yang W, Münzer P, Kunzelmann K *et al*. Expression and functional significance of the Ca(2+)-activated Cl(-) channel ANO6 in dendritic cells. *Cell Physiol Biochem* 2012; **30**: 1319–1332.

- Okada Y, Shimizu T, Maeno E, Tanabe S, Wang X, Takahashi N. Volume-sensitive chloride channels involved in apoptotic volume decrease and cell death. *J Membr Biol* 2006; **209**: 21–29.
- Namkung W, Phuan PW, Verkman AS. TMEM16A inhibitors reveal TMEM16A as a minor component of calcium-activated chloride channel conductance in airway and intestinal epithelial cells. *J Biol Chem* 2011; **286**: 2365–2374.
- De La Fuente R, Namkung W, Mills A, Verkman AS. Small-molecule screen identifies inhibitors of a human intestinal calcium-activated chloride channel. *Mol Pharmacol* 2008; **73**: 758–768.
- Kmit A, van Kruchten R, Ousingsawat J, Mattheij NJ, Senden-Gijsbers B, Heemskerk JW *et al*. Calcium-activated and apoptotic phospholipid scrambling induced by Ano6 can occur independently of Ano6 ion currents. *Cell Death Dis* 2013; **4**: e611.
- Hemker HC, Giesen PL, Ramjee M, Wagenvoort R, Béguin S. The thrombogram: monitoring thrombin generation in platelet-rich plasma. *Thromb Haemost* 2000; **83**: 589–591.
- van der Meijden PE, Feijge MA, Swieringa F, Gilio K, Nergiz-Unal R, Hamulyák K *et al*. Key role of integrin  $\alpha$ (IIb) $\beta$  (3) signaling to Syk kinase in tissue factor-induced thrombin generation. *Cell Mol Life Sci* 2012; **69**: 3481–3492.
- Jones ML, Harper MT, Aitken EW, Williams CM, Poole AW. RGD-ligand mimetic antagonists of integrin  $\alpha$ IIb $\beta$ 3 paradoxically enhance GPVI-induced human platelet activation. *J Thromb Haemost* 2010; **8**: 567–576.
- Weiss HJ, Lages B. Platelet prothrombinase activity and intracellular calcium responses in patients with storage pool deficiency, glycoprotein IIb-IIIa deficiency, or impaired platelet coagulant activity—a comparison with Scott syndrome. *Blood* 1997; **89**: 1599–1611.
- Harper MT, Poole AW. Store-operated calcium entry and non-capacitative calcium entry have distinct roles in thrombin-induced calcium signalling in human platelets. *Cell Calcium* 2011; **50**: 351–358.
- Bergmeier W, Oh-Hora M, McCarl CA, Roden RC, Bray PF, Feske S. R93W mutation in Orai1 causes impaired calcium influx in platelets. *Blood* 2009; **113**: 675–678.
- Braun A, Varga-Szabo D, Kleinschnitz C, Pleines I, Bender M, Austinat M *et al*. Orai1 (CRACM1) is the platelet SOC channel and essential for pathological thrombus formation. *Blood* 2009; **113**: 2056–2063.
- Ramanathan G, Gupta S, Thielmann I, Pleines I, Varga-Szabo D, May F *et al*. Defective diacylglycerol-induced Ca<sup>2+</sup> entry but normal agonist-induced activation responses in TRPC6-deficient mouse platelets. *J Thromb Haemost* 2012; **10**: 419–429.
- Harper MT, Londono JEC, Quick K, Londono JC, Flockerzi V, Philipp SE *et al*. Transient receptor potential channels function as a coincidence signal detector mediating phosphatidylserine exposure. *Sci Signal* 2013; **6**: ra50.
- Estacion M, Sinkins WG, Jones SW, Applegate MA, Schilling WP. Human TRPC6 expressed in HEK 293 cells forms non-selective cation channels with limited Ca<sup>2+</sup> permeability. *J Physiol* 2006; **572**: 359–377.
- Feske S, Gwack Y, Prakriya M, Srikanth S, Puppel SH, Tanasa B *et al*. A mutation in Orai1 causes immune deficiency by abrogating CRAC channel function. *Nature* 2006; **441**: 179–185.
- Epps DE, Wolfe ML, Groppi V. Characterization of the steady-state and dynamic fluorescence properties of the potential-sensitive dye bis-(1,3-dibutylbarbituric acid)trimethine oxonol (Dibac4(3)) in model systems and cells. *Chem Phys Lipids* 1994; **69**: 137–150.
- Yang H, Kim A, David T, Palmer D, Jin T, Tien J *et al*. TMEM16F forms a Ca<sup>2+</sup>-activated cation channel required for lipid scrambling in platelets during blood coagulation. *Cell* 2012; **151**: 111–122.
- Grynkiewicz G, Poenie M, Tsien RY. A new generation of Ca<sup>2+</sup> indicators with greatly improved fluorescence properties. *J Biol Chem* 1985; **260**: 3440–3450.



**Cell Death and Disease** is an open-access journal published by **Nature Publishing Group**. This work is licensed under a **Creative Commons Attribution 3.0 Unported License**. To view a copy of this license, visit <http://creativecommons.org/licenses/by/3.0/>