

**Keywords:** colorectal cancer; lung metastases; *KRAS*; overall survival

# Association between *KRAS* mutation and lung metastasis in advanced colorectal cancer

A A L Pereira<sup>\*1</sup>, J F M Rego<sup>1</sup>, V Morris<sup>2</sup>, M J Overman<sup>3</sup>, C Eng<sup>3</sup>, C R Garrett<sup>3</sup>, A T Boutin<sup>4</sup>, R Ferrarotto<sup>5</sup>, M Lee<sup>2</sup>, Z-Q Jiang<sup>3</sup>, P M Hoff<sup>1</sup>, J-N Vauthey<sup>6</sup>, E Vilar<sup>7</sup>, D Maru<sup>8</sup> and S Kopetz<sup>3</sup>

<sup>1</sup>Department of Radiology and Oncology, Instituto do Cancer do Estado de São Paulo (ICESP) Universidade de São Paulo, São Paulo 01246, Brazil; <sup>2</sup>Hematology and Oncology Fellow, The University of Texas MD Anderson Cancer Center, Houston, TX 77030, USA; <sup>3</sup>Department of Gastrointestinal Medical Oncology, The University of Texas MD Anderson Cancer Center, Houston, TX 77030, USA; <sup>4</sup>Department of Genomic Medicine, The University of Texas MD Anderson Cancer Center, Houston, TX 77030, USA; <sup>5</sup>Department of Thoracic and Head and Neck Medical Oncology, The University of Texas MD Anderson Cancer Center, Houston, TX 77030, USA; <sup>6</sup>Department of Surgical Oncology, The University of Texas MD Anderson Cancer Center, Houston, TX 77030, USA; <sup>7</sup>Department of Clinical Cancer Prevention, The University of Texas MD Anderson Cancer Center, Houston, TX 77030, USA and <sup>8</sup>Department of Pathology, The University of Texas MD Anderson Cancer Center, Houston, TX 77030, USA

**Background:** *KRAS* mutations have been associated with lung metastases at diagnosis of metastatic colorectal cancer (mCRC), but the impact of this mutation on subsequent development of lung metastasis is unknown. We investigated *KRAS* mutation as a predictor of lung metastasis development.

**Methods:** We retrospectively evaluated data from patients with mCRC whose tumour was tested for *KRAS* mutation from 2008 to 2010. The relationships of *KRAS* mutational status with time-to-lung metastasis (TTLM) and overall survival (OS) were analysed.

**Results:** Of the 494 patients identified, 202 (41%) had tumours with *KRAS* mutation. *KRAS* mutations were associated with a shorter TTLM (median 15.2 vs 22.4 months; hazard ratio = 1.40;  $P=0.002$ ) and a two-fold greater odds of developing lung metastases during the disease course in patients with liver-limited mCRC at diagnosis (72 vs 56%,  $P=0.007$ ). Overall survival did not differ by *KRAS* status.

**Conclusions:** Lung metastasis was more likely to develop during the disease course in patients whose tumour had a *KRAS* mutation than in those whose tumour did not have a *KRAS* mutation. This finding may have an impact on decision making for surgical resection of metastatic disease.

Despite advances in treatment, metastatic colorectal cancer (mCRC) remains the fourth most common cause of cancer death worldwide (Siegel *et al*, 2013). The lung is the most common extra-abdominal site of metastasis (Mitry *et al*, 2010).

Currently, the presence of *KRAS* mutation is the most important established predictive biomarker for resistance to anti-epidermal growth factor receptor (EGFR) antibodies cetuximab and panitumumab (Siena *et al*, 2009). The *KRAS* protein functions as an essential component of the EGFR signalling cascade. Activating mutations in the *KRAS* gene cause the constitutive

activation of Ras GTPase, which leads to the overactivation of downstream Raf/Erk/Map kinase and other signalling pathways, resulting in cell transformation and tumorigenesis (Leevers and Marshall, 1992; Wood *et al*, 1992). Preclinical studies have suggested that constitutively activated mutant *KRAS* can promote tumour invasion and metastasis by stimulating matrix metalloproteases, cysteine proteases, serine proteases and urokinase plasminogen activator, all of which facilitate migration through the basement membrane (Jankun *et al*, 1991; Buo *et al*, 1995; Yamamoto *et al*, 1995). The association between *KRAS* mutational

\*Correspondence: Dr AAL Pereira; E-mail: allan.pereira.onco@gmail.com

Received 2 September 2014; revised 27 October 2014; accepted 26 November 2014; published online 23 December 2014

© 2015 Cancer Research UK. All rights reserved 0007–0920/15

status and prognosis is controversial: some studies have reported a link between *KRAS* mutations and poor prognosis (Lievre *et al*, 2006; Nash *et al*, 2010), whereas others have reported no association (Etienne-Grimaldi *et al*, 2008; Roth *et al*, 2010).

The pattern of CRC recurrence is partly determined by clinicopathologic features, such as primary tumour location, initial TNM stage or preoperative serum carcinoembryonic antigen level (Manfredi *et al*, 2006; Mitry *et al*, 2010; Watanabe *et al*, 2013). However, there are limited data evaluating whether the somatic mutation profile can have a role in the pattern of spread of metastasis in CRC patients. The few previous trials have suggested that *KRAS* mutations may influence and contribute to differences in the pattern of metastatic dissemination (Cejas *et al*, 2009; Tie *et al*, 2011; Kim *et al*, 2012). Although these studies focused on the prevalence of lung metastases, there is a clinical need for predictors of subsequent lung metastases in patients with no evidence of pulmonary involvement at the time of diagnosis of metastatic disease. We aimed to determine the potential value of *KRAS* mutation as a predictive factor for development of lung metastasis.

## PATIENTS AND METHODS

**Patient population.** Patients with mCRC with known *KRAS* status who were treated at The University of Texas MD Anderson Cancer Center from 2008 through 2010, independent of metastatic site or whether they developed metastatic disease to the lung, were selected from a prospectively maintained institutional database. A total of 494 patients were identified. The study was approved by institutional review board and ethics committee.

**Study end points.** The primary end point of this retrospective study was a comparison of the time-to-lung metastasis (TTLM). This endpoint was defined as the time from diagnosis of metastatic disease, that is, from the first metastasis in any site, to the time of the first lung metastasis, between patients whose primary tumour had no *KRAS* mutation (*KRAS*<sup>wt</sup>) and patients whose tumour had a *KRAS* mutation (*KRAS*<sup>mut</sup>). The secondary end point aimed to compare the pattern of lung involvement between these two groups and included the following dichotomous variables: lung as first site of metastasis, presence of lung metastasis at the end of follow-up, number of lung metastases (isolated *vs* multiple), lung lobes involved (1 *vs* >1), unilateral *vs* bilateral lung involvement, thoracic lymph node involvement (positive *vs* negative) and synchronous *vs* metachronous or absent lung metastasis. Synchronous metastasis was defined as metastasis diagnosed before or up to 60 days after diagnosis of primary tumour. Overall survival (OS), defined as time from the first metastasis to death from any cause, and lung metastasis-free survival (LMFS), defined as time from the first metastasis in any site to the first lung metastasis or death, also were evaluated as secondary end points. All time-to-event analyses were calculated from the time of diagnosis of metastatic disease to be consistent with time-to-event analyses commonly reported for metastatic patients. It also reflects that this cohort was collected based on their documented development of metastatic disease.

**KRAS mutation determination.** *KRAS* mutations (codons 12, 13, 61; Supplementary Table 1) were identified in formalin-fixed, paraffin-embedded tissue by Sanger sequencing or mass spectroscopy genotyping (Sequenom, San Diego, CA, USA) in the U.S. Department of Health and Human Services Clinical Laboratory Improvement Amendments (CLIA)-compliant pathology lab as part of standard-of-care testing for the patients. Microdissection was utilised under the guidance of a clinical pathologist as required to ensure >30% tumour cellularity.

**Statistical methods and considerations.** Patient characteristics and disease factors were summarised by descriptive statistics. The categorical parameters were compared by using the two-sided Pearson  $\chi^2$ -test or Fisher exact test, as appropriate, and the *t*-test was used for continuous variables. Time-to-event variables were calculated from the time of diagnosis of first metastasis in any site according to the Kaplan–Meier method and were compared by means of the log-rank test. SPSS software (version 16.0; SPSS, Chicago, IL, USA) was used for statistical analyses. A *P*-value <0.05 was considered significant.

## RESULTS

**Patient characteristics.** Of the 494 patients included in this study, 203 (41%) were female. Median follow-up was 26 months. The median age was 55 years (range, 25–85 years). *KRAS* mutation was identified in 202 of the tumours (*KRAS*<sup>mut</sup>, 41%), and 292 tumours were *KRAS* wild type (*KRAS*<sup>wt</sup>, 59%). The groups were unbalanced according to location of primary tumour; tumours with a *KRAS* mutation occurred more frequently in the right side of the colon (*KRAS*<sup>mut</sup> 43% *vs* *KRAS*<sup>wt</sup> 28%) than in the left colon or rectum (57 *vs* 71%, *P*=0.001). Other patient and disease characteristics are shown in Table 1.

**Lung and liver metastases pattern.** At the time of diagnosis of primary tumour, 60 (12%) patients had synchronous lung involvement (16% of the *KRAS*<sup>mut</sup> patients *vs* 9% of *KRAS*<sup>wt</sup>), representing a 1.9-fold greater odds of lung metastasis in the *KRAS*<sup>mut</sup> population (*P*=0.018, 95% confidence interval (CI) 1.08–3.42). The lung was the first site of metastatic disease in 18% of the *KRAS*<sup>mut</sup> patients and 15% of the *KRAS*<sup>wt</sup> (*P*=0.287); by the end of the follow-up, lung involvement had substantially increased, with a 1.6-fold greater odds of lung metastases in the *KRAS*<sup>mut</sup> patients (*P*=0.012, 95% CI 1.09–2.43; Figure 1). The liver was less frequent as the initial metastatic organ in patients with a *KRAS* mutation (*P*=0.004). Among the 275 patients who initially had liver as the only site of metastatic disease, *KRAS*<sup>mut</sup> patients were two-fold more likely to develop lung metastasis (*P*=0.007, 95% CI 1.2–3.5; Table 1).

Among the 315 patients with thoracic metastasis, there were no differences in thoracic lymph node involvement (*P*=0.18), number of lung metastases (*P*=0.71), lung lobes involved (*P*=0.19) or disease in bilateral lung (*P*=0.27) by *KRAS* mutational status (Table 1). There were no statistically significant differences in lung metastasis frequency or pattern of *KRAS* mutations by codon (12, 13 or 61); the distribution of mutations was consistent with those reported by prior studies (Supplementary Table 1).

**Analysis of survival.** Compared with *KRAS*<sup>wt</sup> patients, *KRAS*<sup>mut</sup> patients had a shorter TTLM (22.4 *vs* 15.2 months; hazard ratio (HR)=1.40; 95% CI 1.12–1.75; *P*=0.002; Figure 2A) and LMFS (16.7 *vs* 12.9 months; HR=1.27; 95% CI 1.03–1.55; *P*=0.019; Supplementary Figure 1). In the cohort of patients with initially liver-limited mCRC, TTLM was also shorter in *KRAS*<sup>mut</sup> patients (33.1 *vs* 15.6 months; HR=1.82; 95% CI 1.34–2.49; *P*<0.001; Figure 2B). Overall survival was not different between the groups (HR=1.03; *P*=0.6; Supplementary Figure 2).

## DISCUSSION

To the best of our knowledge, with 494 patients included, this is the largest retrospective series to analyse the role of *KRAS* mutational status in pattern of pulmonary metastasis in CRC patients. Lung metastasis was more common at diagnosis of mCRC in patients whose primary tumour carried a *KRAS* mutation and more likely

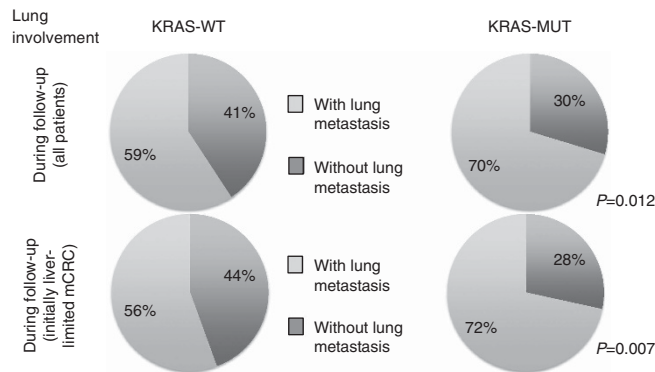
**Table 1. Patient characteristics (N = 494) and the association between KRAS mutational status and metastatic patterns**

Variable	KRAS <sup>wt</sup> 292 pts N (%)	KRAS <sup>mut</sup> 202 pts N (%)	P-value
Age (years), median	55	56	0.971
Sex			0.063
Male	182 (62%)	109 (54%)	
Female	110 (38%)	93 (46%)	
Location of primary tumour(s)			0.01
Ascending colon	66 (23%)	75 (37%)	
Transverse colon	16 (5%)	12 (6%)	
Descending colon/sigmoid	147 (50%)	77 (38%)	
Rectum	61 (21%)	37 (18%)	
Missing	2 (~1%)	1 (~0%)	
Location of primary tumour(s) - right vs left colon			0.001
Right (ascending + transverse)	82 (28%)	87 (43%)	
Left (descending/sigmoid + rectum)	208 (71%)	114 (57%)	
Missing	2 (~1%)	1 (~0%)	
Tumour histology and grade			0.318
Well differentiated	2 (~1%)	1 (~0%)	
Moderately differentiated	191 (65%)	148 (73%)	
Poorly differentiated	84 (29%)	46 (23%)	
Missing	15 (5%)	7 (3%)	
Any type of synchronous disease			0.570
Yes	104 (51%)	77 (38%)	
No	188 (49%)	125 (62%)	
Timing of pulmonary metastasis in relation to primary tumour <sup>a</sup>			0.018
Synchronous	27 (9%)	33 (16%)	
Metachronous or absent	265 (91%)	169 (84%)	
Lung involvement at diagnosis of mCRC			0.287
Yes	43 (15%)	37 (18%)	
No	249 (85%)	165 (82%)	
Lung involvement at last follow-up			0.012
Yes	173 (59%)	142 (70%)	
No	119 (41%)	60 (30%)	
Number of lung metastases <sup>a</sup>			0.71
Single	18 (10%)	13 (9%)	
Multiple	155 (90%)	129 (91%)	
Lung lobes involved <sup>a</sup>			0.19
1	27 (16%)	15 (11%)	
> 1	146 (84%)	127 (89%)	
Laterality of pulmonary metastasis <sup>a</sup>			0.273
Unilateral (right/left)	31 (18%)	19 (12%)	
Bilateral	142 (82%)	123 (88%)	
Thoracic lymph node			0.184
Involved	68 (23%)	37 (18%)	
Not involved	224 (77%)	165 (82%)	
Liver involvement at diagnosis of mCRC			0.004
Yes	228 (78%)	134 (66%)	
No	64 (22%)	68 (34%)	
Patients with only liver disease at diagnosis of mCRC <sup>b</sup>			0.007
Lung metastasis	100 (56%)	68 (72%)	
No lung metastasis	80 (44%)	27 (28%)	

Abbreviation: mCRC = metastatic colorectal carcinoma.  
<sup>a</sup>Among 315 patients with thoracic metastasis.  
<sup>b</sup>Among 275 patients who had liver as the only site of metastasis at diagnosis of mCRC.

to develop during the disease course, suggesting a potential metastatic tropism of CRC to the lung that may have clinical significance for treatment planning.

Despite the lack of difference in OS by KRAS mutational status in the general population of patients with mCRC, several studies



**Figure 1.** Lung involvement according to KRAS mutational during follow-up in all patients with mCRC and during follow-up for the cohort of patients with initially liver-limited mCRC.

have shown that KRAS mutational status has a prognostic role in specific surgical populations, for example, in predicting the risk of recurrence in localised CRC (Hutchins *et al*, 2011) and after hepatic or lung resection (Vauthey *et al*, 2013; Schweiger *et al*, 2014). Our findings confirm the findings of Kim *et al* (2012) and Tie *et al* (2011), which identified differences in metastatic patterns according to KRAS status. Our study extends this finding to demonstrate that, in patients with liver-limited mCRC at diagnosis, lung metastasis is more likely to develop in patients with KRAS mutations. This finding provides validation of the recent report by Vauthey *et al* (2013) that demonstrated that rate of lung recurrence after hepatectomy is higher for tumours with a KRAS mutation, reiterating the potential clinical relevance of this mutation in selecting patients for surgical intervention.

Although our sample size is larger than those of other studies, our study does have a few limitations. First, it is a retrospective analysis of patients from a single institution and thus is subject to the bias of patterns of referral to major academic medical centres and could also explain the young median age observed, which reflects the population from the M.D. Anderson Cancer Center. However, the groups were well balanced according to age (P=0.971–Table 1) and, therefore, it was not a confounding factor in the analysis of end points between groups (KRAS<sup>WT</sup> vs KRAS<sup>MUT</sup>), with a low, if any, impact in the external validity of this study. Second, KRAS status was obtained from routinely available archival material and does not incorporate potential discordance in KRAS status between a primary tumour and its metastases. However, KRAS mutations are thought to be highly concordant during the progression of the disease (Artale *et al*, 2008; Etienne-Grimaldi *et al*, 2008; Santini *et al*, 2008; Cejas *et al*, 2009). Third, the traditional sequencing (Sanger) method (with ~20% allele frequency as lowest threshold for detection) or a mass spectroscopy method (~15% allele frequency) for detection of KRAS mutations was used, both of which have lower sensitivity for mutation analysis than current next-generation sequencing approaches (~5% allele frequency; Jimeno *et al*, 2009; Plesec and Hunt, 2009). However, the relevance of the additional low-allele frequency mutations revealed by the newer methodology is not clear and awaits for further validation.

While our analysis was limited to KRAS codons 12, 13 and 61, KRAS codon 146 and NRAS codons 12, 13 and 61 may exhibit similar behaviour. Extended RAS testing including these codons has improved the predictive ability for EGFR monoclonal antibody therapy and is being incorporated into standard-of-care testing (Douillard *et al*, 2013; Stintzing *et al*, 2013). Collectively, the accumulating data suggest that the RAS mutations confer similar biology, but the association of extended RAS mutation with tropism to lungs remains to be defined. A few retrospective series

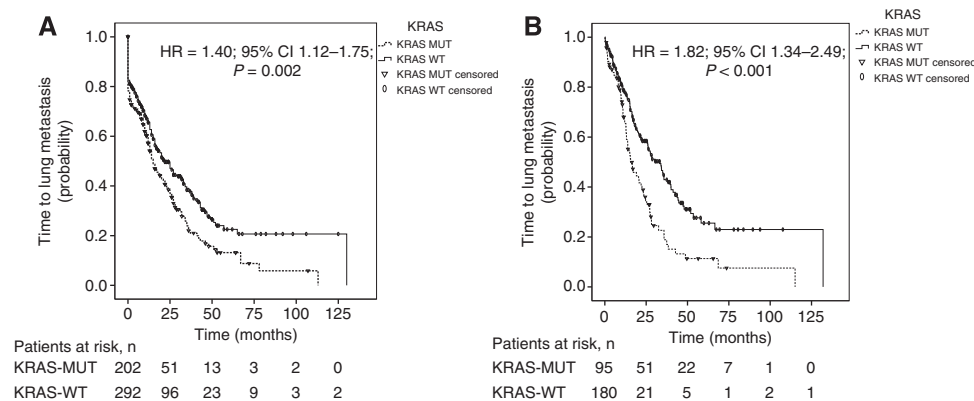


Figure 2. (A) Time-to-lung metastasis by KRAS mutational status in all patients and (B) in the cohort of patients with initially liver-limited mCRC.

have suggested heterogeneous behaviour among the types of KRAS mutation. More recently, Modest *et al* (2011) showed that, compared with mCRCs that have a KRAS codon 12 mutation, those with a codon 13 mutation present as more aggressive disease, with a statistically significantly higher rate of synchronous organ metastasis. Despite this, in our cohort there was no difference in lung metastasis frequency or pattern among cases with KRAS mutation in codons 12, 13 or 61.

These results support the conclusion that KRAS status can be used to risk stratify patients for development of pulmonary metastasis. Surveillance might be more focused on lung metastasis in patients with KRAS<sup>mut</sup> after curative locoregional treatment and when considering surgical options for oligometastatic disease.

## AUTHOR CONTRIBUTIONS

All authors contributed to the conception and design, acquisition of data or analysis and interpretation of data, drafting the article or revising it critically for important intellectual content and final approval of the version to be published.

## CONFLICT OF INTEREST

The authors declare no conflict of interest.

## REFERENCES

- Artale S, Sartore-Bianchi A, Veronese SM, Gambi V, Sarnataro CS, Gambacorta M, Lauricella C, Siena S (2008) Mutations of KRAS and BRAF in primary and matched metastatic sites of colorectal cancer. *J Clin Oncol* **26**: 4217–4219.
- Buo L, Meling GI, Karlsrud TS, Johansen HT, Aasen AO (1995) Antigen levels of urokinase plasminogen activator and its receptor at the tumor-host interface of colorectal adenocarcinomas are related to tumor aggressiveness. *Hum Pathol* **26**: 1133–1138.
- Cejas P, Lopez-Gomez M, Aguayo C, Madero R, de Castro Carpeño J, Belda-Iniesta C, Barriuso J, Moreno García V, Larrauri J, López R, Casado E, Gonzalez-Barón M, Feliú J (2009) KRAS mutations in primary colorectal cancer tumors and related metastases: a potential role in prediction of lung metastasis. *PLoS One* **4**: e8199.
- Douillard JY, Oliner KS, Siena S, Taberero J, Burkes R, Barugel M, Humblet Y, Bodoky G, Cunningham D, Jassem J, Rivera F, Kocákova I, Ruff P, Błasińska-Morawiec M, Smakal M, Canon JL, Rother M, Williams R, Rong A, Wizek J, Sidhu R, Patterson SD (2013) Panitumumab-FOLFOX4 treatment and RAS mutations in colorectal cancer. *New Engl J Med* **369**: 1023–1034.
- Etienne-Grimaldi MC, Formento JL, Francoual M, François E, Formento P, Renée N, Laurent-Puig P, Chazal M, Benchimol D, Delpero JR, Letoublon C, Pezet D, Seitz JF, Milano G (2008) K-Ras mutations and treatment outcome in colorectal cancer patients receiving exclusive fluoropyrimidine therapy. *Clin Cancer Res* **14**: 4830–4835.
- Hutchins G, Southward K, Handley K, François E, Formento P, Renée N, Laurent-Puig P, Chazal M, Benchimol D, Delpero JR, Letoublon C, Pezet D, Seitz JF, Milano G (2011) Value of mismatch repair, KRAS, and BRAF mutations in predicting recurrence and benefits from chemotherapy in colorectal cancer. *J Clin Oncol* **29**: 1261–1270.
- Jankun J, Maher VM, McCormick JJ (1991) Malignant transformation of human fibroblasts correlates with increased activity of receptor-bound plasminogen activator. *Cancer Res* **51**: 1221–1226.
- Jimeno A, Messersmith WA, Hirsch FR, Franklin WA, Eckhardt SG (2009) KRAS mutations and sensitivity to epidermal growth factor receptor inhibitors in colorectal cancer: practical application of patient selection. *J Clin Oncol* **27**: 1130–1136.
- Kim MJ, Lee HS, Kim JH, Kim YJ, Kwon JH, Lee JO, Bang SM, Park KU, Kim DW, Kang SB, Kim JS, Lee JS, Lee KW (2012) Different metastatic pattern according to the KRAS mutational status and site-specific discordance of KRAS status in patients with colorectal cancer. *BMC Cancer* **12**: 347.
- Leevers SJ, Marshall CJ (1992) Activation of extracellular signal-regulated kinase, ERK2, by p21ras oncoprotein. *EMBO J* **11**: 569–574.
- Lievre A, Bachet JB, Le Corre D, Boige V, Landi B, Emile JF, Tomasic G, Penna C, Ducreux M, Rougier P, Penault-Llorca F, Laurent-Puig P (2006) KRAS mutation status is predictive of response to cetuximab therapy in colorectal cancer. *Cancer Res* **66**: 3992–3995.
- Manfredi S, Bouvier AM, Lepage C, Hatem C, Dancourt V, Faivre J (2006) Incidence and patterns of recurrence after resection for cure of colonic cancer in a well defined population. *Br J Surg* **93**: 1115–1122.
- Mitry E, Guiu B, Coscinea S, Jooste V, Faivre J, Bouvier AM (2010) Epidemiology, management and prognosis of colorectal cancer with lung metastases: a 30-year population-based study. *Gut* **59**: 1383–1388.
- Modest DP, Stintzing S, Laubender RP, Neumann J, Jung A, Giessen C, Haas M, Aubele P, Schulz C, Boeck S, Stemmler HJ, Kirchner T, Heinemann V (2011) Clinical characterization of patients with metastatic colorectal cancer depending on the KRAS status. *Anticancer Drugs* **22**: 913–918.
- Nash GM, Gimbel M, Cohen AM, Zeng ZS, Ndubuisi MI, Nathanson DR, Ott J, Barany F, Paty PB (2010) KRAS mutation and microsatellite instability: two genetic markers of early tumor development that influence the prognosis of colorectal cancer. *Ann Surg Oncol* **17**: 416–424.
- Plesec TP, Hunt JL (2009) KRAS mutation testing in colorectal cancer. *Adv Anat Pathol* **16**: 196–203.
- Roth AD, Tejpar S, Delorenzi M, Yan P, Fiocca R, Klingbiel D, Dietrich D, Biesmans B, Bodoky G, Barone C, Aranda E, Nordlinger B, Cisar L, Labianca R, Cunningham D, Van Cutsem E, Bosman F (2010) Prognostic role of KRAS and BRAF in stage II and III resected colon cancer: results of the translational study on the PETACC-3, EORTC 40993, SAKK 60-00 trial. *J Clin Oncol* **28**: 466–474.
- Santini D, Loupakis F, Vincenzi B, Floriani I, Stasi I, Canestrari E, Rulli E, Maltese PE, Andreoni F, Masi G, Graziano F, Baldi GG, Salvatore L, Russo A, Perrone G, Tommasino MR, Magnani M, Falcone A, Tonini G, Ruzzo A (2008) High concordance of KRAS status between primary colorectal tumors and related metastatic sites: implications for clinical practice. *Oncologist* **13**: 1270–1275.
- Schweiger T, Hegedus B, Nikolowsky C, Hegedus Z, Szirtes I, Mair R, Birner P, Döme B, Lang G, Klepetko W, Ankersmit HJ, Hoetzenecker K

- (2014) EGFR, BRAF and KRAS status in patients undergoing pulmonary metastasectomy from primary colorectal carcinoma: a prospective follow-up study. *Ann Surg Oncol* **21**: 946–954.
- Siegel R, Naishadham D, Jemal A (2013) Cancer statistics, 2013. *CA Cancer J Clin* **63**: 11–30.
- Siena S, Sartore-Bianchi A, Di Nicolantonio F, Balfour J, Bardelli A (2009) Biomarkers predicting clinical outcome of epidermal growth factor receptor-targeted therapy in metastatic colorectal cancer. *J Natl Cancer Inst* **101**: 1308–1324.
- Stintzing S, Jung A, Rossius L *et al.* (2013) Analysis of KRAS/NRAS and BRAF mutations in FIRE-3; a randomized phase III study of FOLFIRI plus cetuximab or bevacizumab as first-line treatment for wild-type (WT) KRAS (exon 2) metastatic colorectal cancer (mCRC) patients. Presented at the European Cancer Congress 2013; 28 September 28 2013; Amsterdam, The Netherlands. Abstract 17.
- Tie J, Lipton L, Desai J, Gibbs P, Jorissen RN, Christie M, Drummond KJ, Thomson BN, Usatoff V, Evans PM, Pick AW, Knight S, Carne PW, Berry R, Polglase A, McMurrick P, Zhao Q, Busam D, Strausberg RL, Domingo E, Tomlinson IP, Midgley R, Kerr D, Sieber OM (2011) KRAS mutation is associated with lung metastasis in patients with curatively resected colorectal cancer. *Clin Cancer Res* **17**: 1122–1130.
- Vauthey JN, Zimmitti G, Kopetz SE, Shindoh J, Chen SS, Andreou A, Curley SA, Aloia TA, Maru DM (2013) RAS mutation status predicts survival and patterns of recurrence in patients undergoing hepatectomy for colorectal liver metastases. *Ann Surg* **258**: 619–626discussion 626–617.
- Watanabe K, Saito N, Sugito M, Ito M, Kobayashi A, Nishizawa Y (2013) Incidence and predictive factors for pulmonary metastases after curative resection of colon cancer. *Ann Surg Oncol* **20**: 1374–1380.
- Wood KW, Sarnecki C, Roberts TM, Blenis J. (1992) ras mediates nerve growth factor receptor modulation of three signal-transducing protein kinases: MAP kinase, Raf-1, and RSK. *Cell* **68**: 1041–1050.
- Yamamoto H, Itoh F, Senota A, Adachi Y, Yoshimoto M, Endoh T, Hinoda Y, Yachi A, Imai K (1995) Expression of matrix metalloproteinase matrilysin (MMP-7) was induced by activated Ki-ras via AP-1 activation in SW1417 colon cancer cells. *J Clin Lab Anal* **9**: 297–301.

Supplementary Information accompanies this paper on British Journal of Cancer website (<http://www.nature.com/bjc>)