

Suppression of activin A signals inhibits growth of malignant pleural mesothelioma cells

MA Hoda^{1,2,7}, J Münzker^{2,7}, B Ghanim¹, K Schelch², T Klikovits¹, V Laszlo¹, E Sahin², A Bedeir², A Lackner², B Dome^{1,3}, U Setinek⁴, M Filipits², M Eisenbauer², I Kenessey⁵, S Török³, T Garay⁵, B Hegedus^{1,2,5}, A Catania⁶, S Taghavi¹, W Klepetko¹, W Berger² and M Grusch²

¹Division of Thoracic Surgery, Department of Surgery, Comprehensive Cancer Center, Medical University of Vienna, Vienna, Austria; ²Department of Medicine I, Institute of Cancer Research, Comprehensive Cancer Center, Medical University of Vienna, Borschkegasse 8a, Vienna 1090, Austria; ³National Koranyi Institute of TB and Pulmonology, Budapest, Hungary; ⁴Division of Pathology, Otto Wagner Hospital, Vienna, Austria; ⁵Second Department of Pathology, Semmelweis University, Budapest, Hungary; ⁶Ospedale Policlinico, Via F. Sforza 35, Milano, Italy

BACKGROUND: Activins control the growth of several tumour types including thoracic malignancies. In the present study, we investigated their expression and function in malignant pleural mesothelioma (MPM).

METHODS: The expression of activins and activin receptors was analysed by quantitative PCR in a panel of MPM cell lines. Activin A expression was further analysed by immunohistochemistry in MPM tissue specimens ($N = 53$). Subsequently, MPM cells were treated with activin A, activin receptor inhibitors or activin-targeting siRNA and the impact on cell viability, proliferation, migration and signalling was assessed.

RESULTS: Concomitant expression of activin subunits and receptors was found in all cell lines, and activin A was overexpressed in most cell lines compared with non-malignant mesothelial cells. Similarly, immunohistochemistry demonstrated intense staining of tumour cells for activin A in a subset of patients. Treatment with activin A induced SMAD2 phosphorylation and stimulated clonogenic growth of mesothelioma cells. In contrast, treatment with kinase inhibitors of activin receptors (SB-431542, A-8301) inhibited MPM cell viability, clonogenicity and migration. Silencing of activin A expression by siRNA oligonucleotides further confirmed these results and led to reduced cyclin D1/3 expression.

CONCLUSION: Our study suggests that activin A contributes to the malignant phenotype of MPM cells via regulation of cyclin D and may represent a valuable candidate for therapeutic interference.

British Journal of Cancer (2012) **107**, 1978–1986. doi:10.1038/bjc.2012.519 www.bjcancer.com

Published online 20 November 2012

© 2012 Cancer Research UK

Keywords: mesothelioma; activin; activin receptor; SMAD signalling; targeted therapy

Malignant pleural mesothelioma (MPM) is a highly lethal malignancy strongly associated with asbestos exposure (Peto *et al*, 1999). Owing to the long latency period of 20–40 years, the incidence of MPM is expected to increase dramatically over the next few decades despite the implementation of a ban on asbestos use in most countries since the 1980s. Estimations predict 250 000 people to die from MPM in Europe in the next 30 years and 2500–3000 new cases to be diagnosed each year in the United States (Peto *et al*, 1999; Robinson and Lake, 2005). The expected median survival of patients suffering from MPM is still poor ranging from 4 to 12 months after diagnosis (Zucali and Giaccone, 2006). Aggressive cytoreductive therapy, including surgery (extrapleural pneumonectomy) in combination with chemotherapy and radiation (trimodality therapy), has been shown to prolong survival in selected patients with early MPM (Sugarbaker *et al*, 1996). However, even the most successful current chemotherapy regimen (pemetrexed/cisplatin) prolongs median

survival only by a few months (Vogelzang *et al*, 2003). Therefore, a better understanding of the mechanisms controlling malignant growth of MPM cells and the rational development of new therapeutic concepts with higher efficiency and defined cellular targets remains an important priority (Jackman, 2009).

Activins are members of the transforming growth factor β -(TGF- β) superfamily of growth and differentiation factors. Activin A, a homodimer of two β A subunits, has important physiological roles in cell differentiation, wound healing and inflammation (Werner and Alzheimer, 2006) and has the ability to either inhibit or promote growth, depending on the cell type. With respect to cancer, activin A was shown to inhibit cell proliferation in hepatocellular carcinoma (Chen *et al*, 2000), breast cancer (Burdette *et al*, 2005) or prostate cancer (Wang *et al*, 1996). Accordingly, tumours from these organs often show overexpression of activin antagonising proteins such as follistatin (Grusch *et al*, 2006) or FLRG (Razanajaona *et al*, 2007). In contrast, promotion of cell proliferation by activin A was demonstrated in endometrial carcinoma (Tanaka *et al*, 2004), oral squamous cell carcinoma (Chang *et al*, 2010) and several thoracic tumours, such as oesophageal squamous cell carcinoma (Yoshinaga *et al*, 2008), oesophageal adenocarcinoma (Seder *et al*, 2009a) and lung adenocarcinoma (Seder *et al*, 2009b). In these cancer types,

*Correspondence: Dr M Grusch;

E-mail: michael.grusch@medunivien.ac.at

⁷These authors contributed equally to this work.

Received 25 May 2012; revised 24 October 2012; accepted 26 October 2012; published online 20 November 2012

overexpression of activin A was found and often associated with poor prognosis, enhanced metastasis or a shorter disease-free survival time (Yoshinaga *et al*, 2003; Seder *et al*, 2009b; Chang *et al*, 2010). Moreover, downregulation of activin A gene expression via RNA interference reduced cell proliferation and invasion of cancer cells from these malignancies (Seder *et al*, 2009a,b; Chang *et al*, 2010), thus demonstrating the importance of activin A signalling for various carcinomas and suggesting activin A as a potential candidate for therapeutic interference.

In the present study, we show that activin A is highly expressed in MPM cell lines and in a subset of MPM tissue specimens. Furthermore, we demonstrate that inhibition of activin receptors or silencing of activin A gene expression impairs growth and migration of MPM cells.

MATERIALS AND METHODS

Cell culture

SPC111, SPC212 and M38K cells were established from biphasic MPM and kindly provided by Professor R Stahel (SPC11 and SPC212, University of Zurich, Zurich, Switzerland) and Professor VL Kinnula (M38K, University of Helsinki, Helsinki, Finland). All other mesothelioma cell lines were from epithelioid MPM. The I2 MPM cell line was kindly provided by Professor A Catania (University of Milano, Milano, Italy). The CRL5820 and the non-transformed mesothelial cell line Met5a were purchased from the American Type Culture Collection (Manassas, VA, USA). P31 and their cisplatin-resistant derivative P31res1.2 (established by *in vitro* cisplatin selection) were kindly provided by Professor K Grankvist (University of Umea, Umea, Sweden). The VMC6 and VMC20 cell lines were established by our group following published protocols (Sagmeister *et al*, 2008). The MPM cell lines were maintained in RPMI1640 or MEM with 10% fetal calf serum (PAA, Pasching, Austria). Cell lines were authenticated by array-comparative genomic hybridisation or DNA fingerprinting and regularly checked for *Mycoplasma* contamination.

RNA isolation, cDNA synthesis and real-time PCR

Isolation of total RNA from logarithmically growing cells was performed with TRIzol (Life Technologies, Carlsbad, CA, USA) and 2 µg RNA per sample were reverse transcribed with MMLV reverse transcriptase (Thermo Scientific, Waltham, MA, USA). One microlitre cDNA, corresponding to 50 ng RNA, was analysed per PCR. Quantitative real-time PCR (QPCR) was performed with Taqman assays or SYBR Green (Life Technologies), as previously described (Grusch *et al*, 2006), on an ABI Prism 7500 thermocycler (Life Technologies). Assay IDs, primer sequences and annealing temperatures are listed in Supplementary Tables S1 and S2. The housekeeping genes β -2 microglobulin, glyceraldehyde-3 phosphate dehydrogenase (GAPDH), β -actin and 18s ribosomal RNA were used for normalisation, and semiquantitative determination of gene expression was performed by applying the $2^{(-\Delta\Delta CT)}$ method using Met5a as calibrator. All expression analyses were performed in duplicates and repeated at least twice.

Tissue samples

Formalin-fixed, paraffin-embedded tumour tissue was available from 53 MPM patients resected between 1993 and 2010 at the Medical University of Vienna, Department of Surgery. All procedures were approved by the local Ethics Committee. Tissues were embedded during routine diagnostic work-up and coded by the Department of Pathology. Sections from each tumour block were cut at 4 µm. Haematoxylin and eosin staining was used to confirm the presence of invasive cancer.

Immunohistochemistry

Briefly, tissue sections were deparaffinised and rehydrated. After epitope retrieval, sections were incubated overnight at 4 °C with primary antibodies (anti activin A, AbD Serotec, Kidlington, UK; Ki67, Dako, Glostrup, Denmark; dilutions 1 : 100). Specificity of the activin A antibody was confirmed by immunoblotting using recombinant human (rh) activin A. Bound antibody on tissue sections was detected with the UltraVision LP detection system (Thermo Scientific). Colour development was done by 3,3'-diaminobenzidine and counterstaining by haematoxylin. Staining was evaluated by a thoracic pathologist unaware of the patients' clinicopathological status. Only cytoplasmic staining of activin A was considered positive. Mean staining intensity was scored as absent (0), weak (1), moderate (2) or strong (3). The results were correlated with clinical/histological data using SPSS 17 software (SPSS Inc., Chicago, IL, USA).

Western blot analysis

Cells were seeded into six-well plates at a density of 3×10^5 per well. After 24 h, cells were incubated with rh activin A (20 ng ml⁻¹, R&D Systems, Minneapolis, MN, USA) for 30 min or transfected with siRNA oligonucleotides for 24 h as described below. Then proteins were extracted and processed for SDS-PAGE and immunoblotting as published (Hoda *et al*, 2011). The following primary antibodies were used: rabbit polyclonal to pSMAD2 (#3101), total SMAD2/3 (#3102), pERK1/2 (#9101), total ERK1/2 (#9102), mouse monoclonal to cyclin D1 (#2926), D2 (#2924) and D3 (#2936), rabbit monoclonal to β -tubulin (#2128) (all from Cell Signaling Technology, Danvers, MA, USA), mouse monoclonal to β -actin (Sigma, St Louis, MO, USA) at 1:1000 dilutions in PBS with 3% BSA. Horseradish peroxidase-coupled anti-rabbit/mouse antibodies (3% BSA, Dako) were used at 1 : 10 000 dilutions and blots developed with Western C reagent (Bio-Rad, Hercules, CA, USA). Bio-1D software (Vilber Lourmat, Eberhardzell, Germany) was used for band quantification.

Clonogenic assay

One thousand cells per well were seeded into six-well plates. After 24 h, the medium was removed, cells were washed once with PBS and treated with 20 ng ml⁻¹ rh activin A (in PBS 0.1% BSA) or 2.5–20 µM of the activin receptor inhibitors SB-431542 or A-8301 (both from Tocris Bioscience, Bristol, UK) in DMSO. Controls were treated with solvent only. Treatment medium was renewed every 72 h. After 10–14 days, the medium was removed and colonies were stained with crystal violet. For photometric quantification, colonies were destained with 2% SDS and absorbance was measured at 562 nm using a SynergyHT plate reader and Gen5 software (BioTek, Winooski, VT, USA).

Scratch assay

Scratches were applied to confluent cultures in six-well plates using a pipette tip, medium was renewed and the indicated treatments were added. Scratches were photographed after 0, 4, 8, 24 and 48 h, and wound closure was calculated from the micrographs with Image J software (National Institutes of Health, Bethesda, MD, USA).

Cell viability assay

Cells were seeded in triplicates into 96-well plates at a density of 2×10^3 cells per well. The next day, medium was replaced with 100 µl fresh medium containing the indicated treatments and cells were incubated for 72 h. Cell viability was determined with the EZ4U kit (Biomedica, Vienna, Austria) following the manufacturer's instructions. Absorbance was measured at 450 and 620 nm (as reference) as described above. Experiments were repeated at least three times.

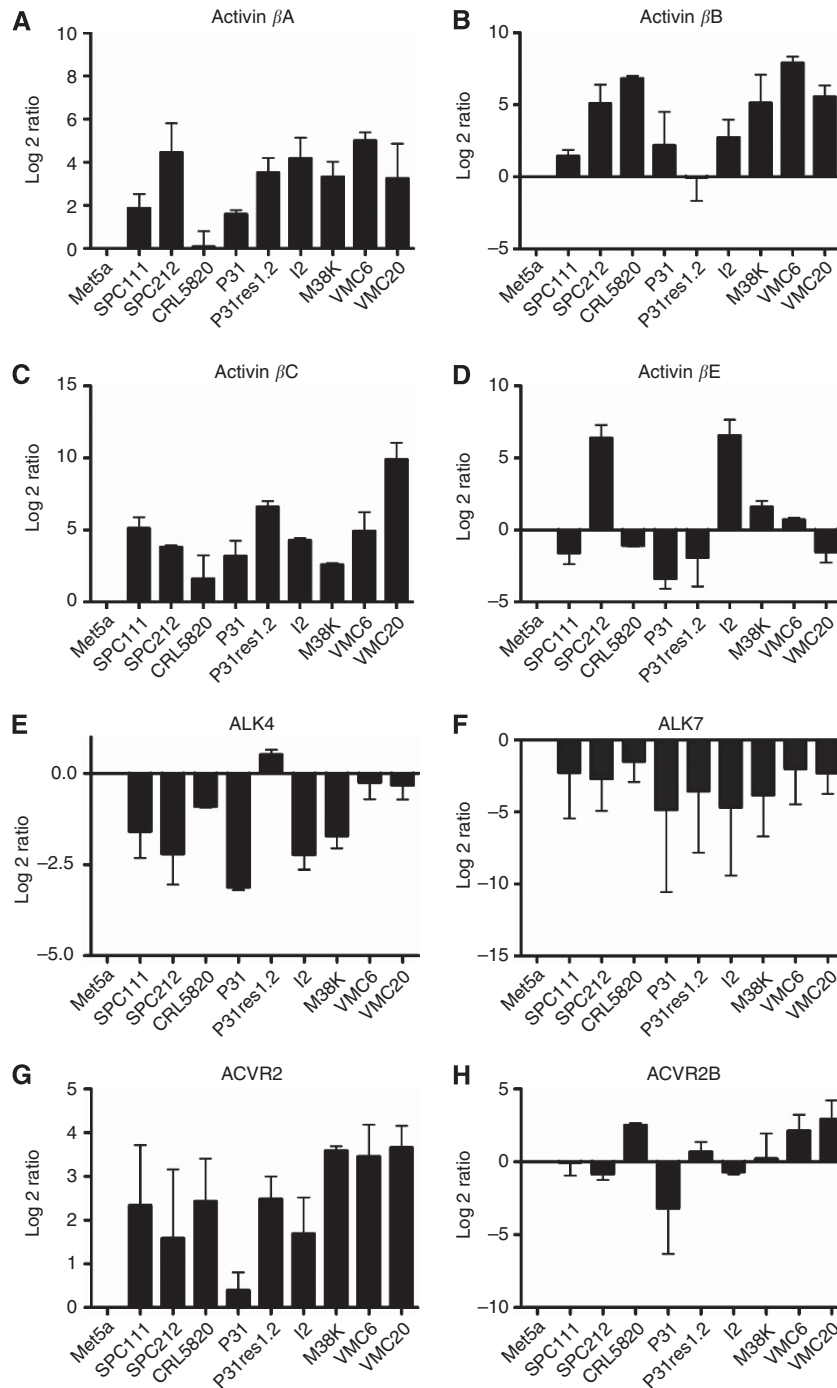


Figure 1 Expression of activin family genes in MPM cell models. RNA was extracted and reverse transcribed from subconfluent cultures of MPM cells and the non-malignant mesothelial cell line Met5a. The expression levels were determined with Taqman assays (activin subunits, **A–D**) or SYBR green real-time PCR (activin receptors, **E–H**) by the $2^{(-\Delta\Delta CT)}$ method using GAPDH for normalisation and Met5a as calibrator. Log₂ ratios of fold change compared with Met5a from at least two independent experiments performed in duplicates are shown.

Gene silencing

Cells were seeded into six-well plates at a density of 2×10^5 per well in full growth medium. The next day, cells were transfected with 50 nM siRNA targeting activin β A or non-silencing siRNA (both from Dharmacon, Lafayette, CO, USA) and Oligofectamine (Life Technologies) as transfection reagent. Cells were collected 48 h after transfection for determination of silencing efficiency by Taqman assays. Cell viability, colony formation and

protein expression were tested as described above, except that clonogenic assays were performed in 12-well instead of 6-well plates.

Statistical analysis

Data are expressed as means \pm s.d. from at least three individual experiments, except for staining scores, which are shown as box blots. Statistical significance of differences was determined by

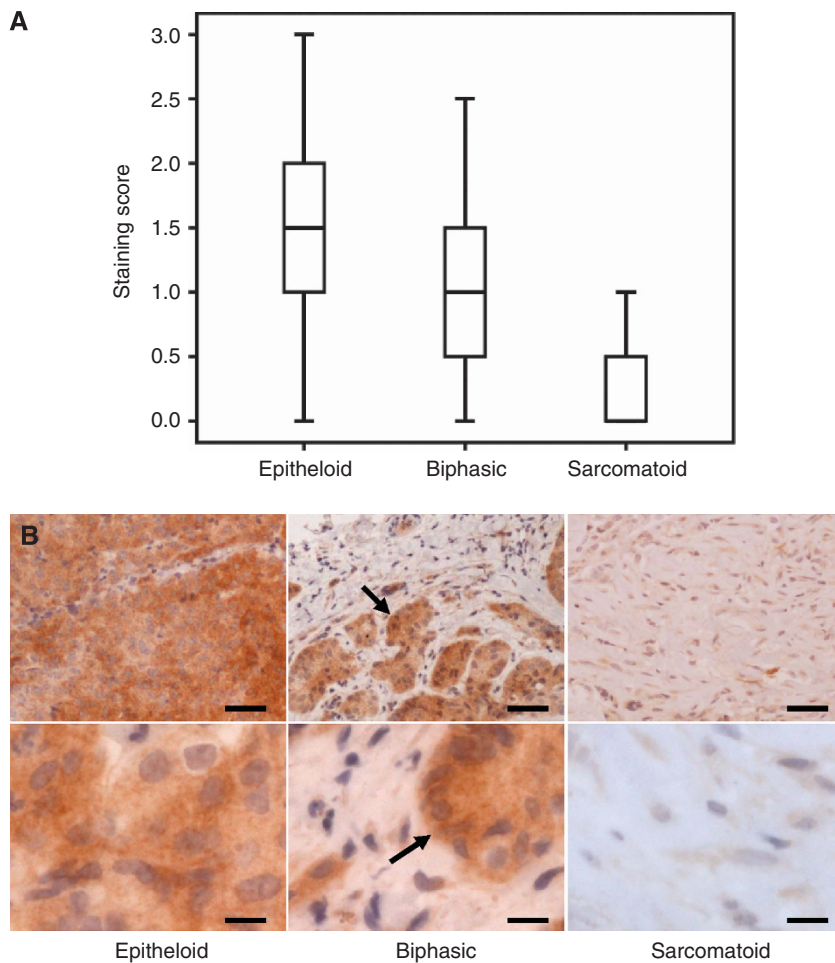


Figure 2 The expression of activin A in MPM tissue. Fifty-three human paraffin-embedded MPM surgical specimens of different histology were immunostained for activin A (brown) and nuclei were counterstained with haematoxylin (blue). **(A)** Staining intensities were scored as described in Materials and Methods and box plots of staining scores for the different histological subtypes are shown. **(B)** Representative examples of activin A-stained specimens of epitheloid, biphasic and sarcomatoid MPM at low (upper panels, scale bar = 40 μ m) and high (lower panels, scale bar = 10 μ m) magnification. Note that intense staining in biphasic MPM is restricted to the epitheloid compartment (arrows).

using unpaired *t*-test, χ^2 -test or one-way or two-way ANOVA, as appropriate. *P*-values < 0.05 were considered statistically significant. Survival analysis was performed using Kaplan–Meier curves, log-rank test and the Cox-regression model.

RESULTS

Malignant pleural mesothelioma cell lines (over)express activin family members

The transcript levels of the activin subunits (β A, β B, β C and β E, Figure 1A–D) as well as the activin type I and type II receptors (ALK4, ALK7, ACVR2, ACVR2B, Figure 1E–H) were analysed using QPCR. Analyses were performed in nine MPM cell lines in comparison with the non-malignant mesothelial cell line Met5a. All cell lines expressed detectable levels of activin subunits as well as activin receptors. Importantly, the activin β A subunit, which has been previously linked to tumour aggressiveness in thoracic malignancies (Yoshinaga *et al*, 2008; Seder *et al*, 2009b), was elevated more than four-fold (\log_2 ratio > 2) in six of nine MPM cell lines. Among the activin receptors, the type I receptors were mostly downregulated, whereas the type II receptor ACVR2 was upregulated. Activin signals are kept in balance by several antagonists such as follistatin, fstl3/FLRG, inhibin- α and TDGF1/cripto-1. However, none of these showed a clear trend of up- or

downregulation in MPM cell lines (Supplementary Figure S1). No significant correlation was found between the expression level of the β A subunit and activin receptors or activin antagonists.

Activin A is highly expressed in epitheloid MPM tissue

As activin β A was overexpressed in the majority of MPM cell lines, we next tested, whether activin A is also present in tissue specimens from MPM patients. Paraffin-embedded tissue samples were available from 36 patients with epitheloid, 13 with biphasic and 4 with sarcomatoid MPM. Activin A staining of tumour cells is displayed as mean staining score for the three different histological subtypes (Figure 2A). Overall, 6 (11.3%), 20 (37.7%), 20 (37.7%) and 7 (13.2%) of the tumours had strong, moderate, weak or absent staining, respectively. Representative cases are shown in Figure 2B. There was a significant association of activin A expression with epitheloid vs non-epitheloid histology (*P* = 0.005), but not with patient survival, stage or nuclear Ki67 expression. In tumours with biphasic histology, activin A was predominantly present in the epithelial compartment.

Activin A stimulates growth and migration of MPM cells

Activin A has been connected to either apoptosis induction or more aggressive growth of tumour cells depending on the cell type.

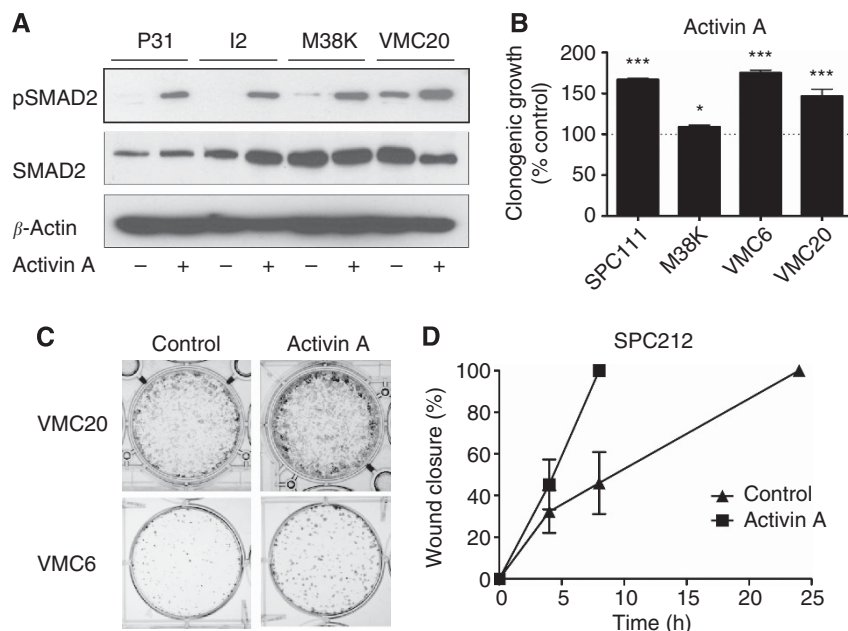


Figure 3 Activin A induces SMAD phosphorylation and supports migration and clonogenic growth. **(A)** A total of 5×10^5 cells were seeded into each well of six-well plates and after 24 h treated with 20 ng ml^{-1} activin A for 30 min. Cells were collected and assayed for phospho- and total SMAD2 as well as β -actin as loading control. **(B, C)** A total of 10^3 cells were seeded into six-well plates and treated with 20 ng ml^{-1} activin A for 10 days. Wells were stained with crystal violet, destained in 2% SDS and absorption at 562 nm was determined. Data from at least two duplicate determinations **(B)** and representative examples **(C)** are shown. **(D)** Cells were grown to near confluence in six-well plates and a scratch wound was applied with a pipette tip. After a medium change, cells were treated with 20 ng ml^{-1} activin A and wound closure was determined microscopically after 4, 8 and 24 h. * $P < 0.05$, *** $P < 0.001$.

Therefore, we next evaluated the response of MPM cells to activin A. First, we tested induction of SMAD signalling by activin A. When MPM cell lines were treated with recombinant activin A, an increase of phosphorylated SMAD2 was seen in all tested cell lines (Figure 3A). VMC20 and M38K also showed a considerable degree of SMAD2 activation in the absence of activin A treatment. No activation of MAP-kinase signalling (p38, ERK1/2) by activin A was seen in any of the cell lines (data not shown). When clonogenic growth/survival assays were performed, activin A induced a stimulation of up to 50% compared with mock-treated controls (Figure 3B and C). Also cell migration, analysed by scratch assay, was enhanced (Figure 3D). This demonstrates that activin A signal transduction via the canonical SMAD pathway is active in MPM cells and that MPM cells respond to activin A with increased growth and migration.

Inhibition of activin receptors impairs growth, clonogenicity and migration of MPM cells

As activin A supported MPM cell growth and MPM cell lines expressed activin βA , we next tested the dependency of MPM cell lines on activin receptor signals. Two different kinase inhibitors (SB-431542 and A-8301) targeting type I activin receptors (activin-like receptor kinases, ALK) were used. SB-431542 induced a dose-dependent inhibition of clonogenicity (Figure 4A). A similar growth inhibitory effect was also seen with A-8301, or when colorimetric short-term viability assays were performed instead of the clonogenic assays with SB-431542 (Figure 4B and C). Wound closure in scratch assays was also significantly delayed by SB-431542 (Figure 4D).

Silencing of activin βA reduces viability and clonogenicity of MPM cells

As an additional proof for dependency of MPM cells on activin A, we silenced activin βA expression by siRNA. As shown in

Figure 5A, a knockdown efficiency of around 75% was achieved when compared with respective mock controls (non-silencing siRNA). Again, a decrease of viability of 30–50% was seen in all cell models tested, except for P31, which showed no response in the short-term assay (Figure 5B). However, both P31 and its cisplatin-resistant derivative were inhibited in the clonogenic assay (Figure 5C).

To gain deeper insight into potential mechanisms underlying these effects, we analysed cyclin D expression and ERK1/2 phosphorylation of MPM cells in response to activin A silencing (Figure 6). Although cyclin D2 was not expressed at detectable levels, repression of cyclin D1 and cyclin D3 was observed in VMC20 cells and to a more moderate degree also in P31. Reduced ERK1/2 phosphorylation was only seen in the VMC20 cell line, whereas P31 showed a slight increase.

DISCUSSION

Despite considerable efforts to improve the outcome of patients suffering from MPM (Kelly *et al*, 2011), the prognosis remains still poor. This emphasises the urgent need for a better understanding of the molecular changes leading to the development of MPM, which could serve as basis for designing new molecularly targeted treatment strategies.

Activins represent possible interventional targets, as they are involved in the control of cell proliferation and differentiation, and are frequently deregulated in a variety of malignancies (Risbridger *et al*, 2001; Tsuchida *et al*, 2009). In liver cancer, for instance, tumour cells displayed decreased expression levels of activin A compared with normal hepatocytes (Vejda *et al*, 2003) and there is evidence for a decrease in activin signals in other cancer types such as breast and colorectal carcinoma (Jeruss *et al*, 2003; Jung *et al*, 2004). Interestingly, in tumour cells from these malignancies, treatment with activin A exerted growth-suppressive effects (Vejda *et al*, 2003; Burdette *et al*, 2005; Razanajaona *et al*, 2007) that we

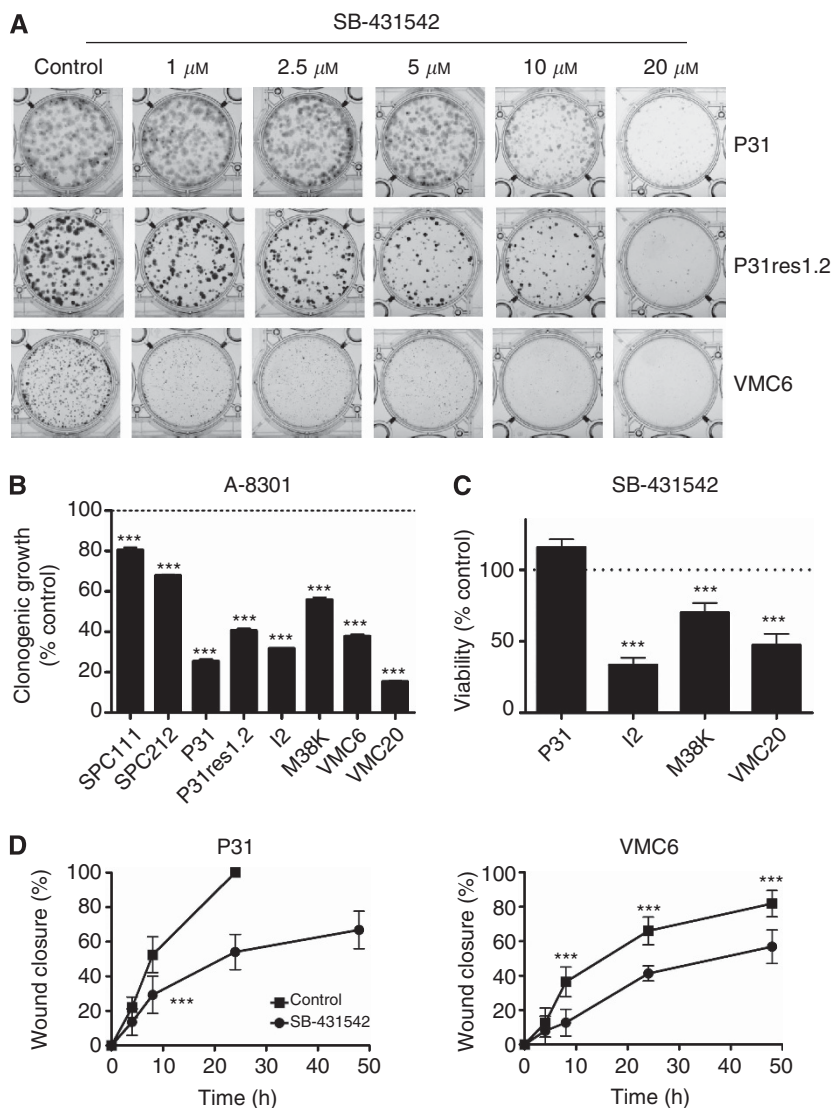


Figure 4 Activin receptor inhibition impairs MPM cell growth and migration. **(A)** The MPM cells (10^3 per well) were seeded into six-well plates and after 24 h treated with the indicated concentrations of SB-431542 or solvent (DMSO) as control for 10 days. Plates were stained with crystal violet and photographed. **(B)** Cells were seeded as in A and treated with $20 \mu\text{M}$ A-8301. Plates were destained with 2% SDS and absorption was measured at 562 nm. **(C)** A total of 2×10^3 cells per well were seeded into 96-well plates and treated the next day with $20 \mu\text{M}$ SB-431542 for 72 h. Cell viability was determined by MTT assay. **(D)** Cells were grown to near confluence in six-well plates and treated with SB-431542 or solvent after application of a scratch wound with a pipette tip. Wound closure was measured after 4, 8, 24 and 48 h. $***P < 0.001$.

recapitulated in the HepG2 hepatoma cells in this study (Supplementary Figure S2). In contrast, a pro-tumourigenic role of activin A via the tumour microenvironment has recently been demonstrated in a mouse model of skin tumourigenesis (Antsiferova *et al*, 2011). Similarly, increased activin A levels were found in thoracic malignancies, and treatment with activin A or ectopic overexpression of activin βA was associated with enhanced tumour cell aggressiveness (Yoshinaga *et al*, 2008; Seder *et al*, 2009a,b).

In MPM, previous studies demonstrated an inhibition of cell proliferation and tumour growth by antisense RNA to TGF- β (Fitzpatrick *et al*, 1994)—a cytokine of the same superfamily—but the role of activin signals in MPM has not been investigated so far. In the current study, we found increased expression of the activin subunits βA , βB and βC on the transcript level by QPCR in a panel of MPM cell lines, whereas in contrast to liver tumours (Grusch *et al*, 2006), melanoma (Stove *et al*, 2004) or breast cancer (Razanajaona *et al*, 2007), no consistent upregulation of the activin antagonists follistatin or FLRG was observed. Elevated expression

of activin B or C has been reported in other malignancies as well (Gold *et al*, 2009; Frost *et al*, 2011), but their function in tumour biology remains largely uncharacterised. As activin A has previously been implicated in malignant progression, we focused the subsequent analysis on this member of the activin family. Elevated activin A expression was confirmed by immunohistochemistry in tissue sections. This is in line with several recent publications, for instance in lung cancer (Seder *et al*, 2009b) oesophageal adenocarcinoma (Seder *et al*, 2009a) oral squamous cell carcinoma (Chang *et al*, 2010) and gastric cancer (Wang *et al*, 2010). Our results indicate that MPM is also characterised by increased rather than decreased activin A levels. However, in contrast to oral squamous cell carcinoma (Chang *et al*, 2010), stage I lung adenocarcinoma (Seder *et al*, 2009b) and gastric cancer in a Chinese population (Wang *et al*, 2010), expression was not associated with a worsened disease outcome. This could be explained by the rather heterogeneous patient collective as a result of different treatment approaches currently applied in MPM. Similar to phospho-mTOR (Hoda *et al*, 2011), activin A was

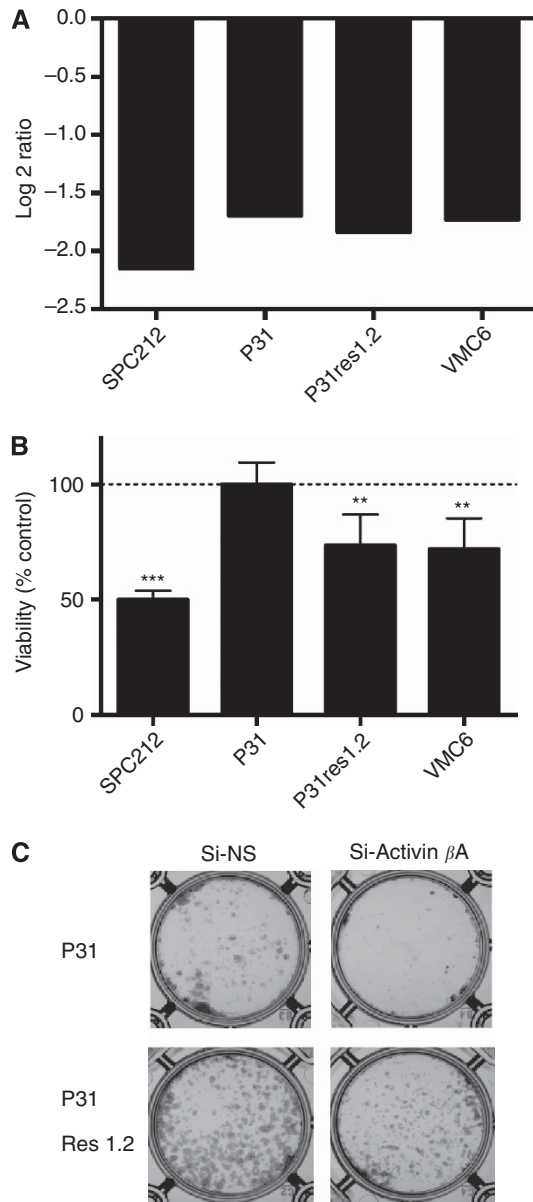


Figure 5 Silencing of activin A impairs MPM cell viability and clonogenic growth. **(A)** Cells were transfected with siRNA targeting activin β A (si-Activin β A) or with a non-silencing control siRNA (si-NS). Forty-eight hours after transfection, RNA was extracted and reverse transcribed. Knockdown efficiency compared with the non-silencing control was determined by Taqman assays. **(B)** A total of 2×10^3 cells were seeded into 96-well plates and transfected with siRNA. Viability was determined by MTT assay 72 h after transfection. **(C)** Overall, 10^3 MPM cells were seeded into 12-well plates and transfected with siRNA. After 10 days colonies were stained with crystal violet. ** $P < 0.01$, *** $P = 0.001$.

associated with epitheloid histology, a histological subtype of MPM generally associated with a better outcome after trimodality treatment (Musk *et al*, 2011).

No previous reports have been published on the impact of activin A on MPM cell behaviour. Therefore, we tested on the one hand the effect of recombinant activin A, and on the other hand inhibition of activin receptors. Activin A stimulated clonogenic growth and enhanced cell migration similar to the findings described for activin A in oesophageal adenocarcinoma and lung adenocarcinoma (Seder *et al*, 2009a,b). Collectively, these data suggest that in each of these thoracic malignancies activin A has a

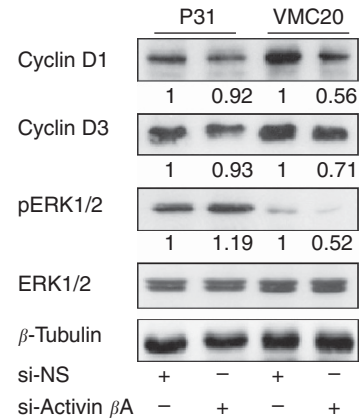


Figure 6 Silencing of activin A impairs cyclin D expression. Cells were transfected with siRNA targeting activin β A (si-Activin β A) or with a non-silencing control siRNA (si-NS). After 48 h, protein lysates were assayed for the expression of cyclin D1, cyclin D3, pERK1/2, ERK1/2 and β -tubulin as loading control. Representative blots plus the normalised (to si-NS) band intensity ratios of cyclin D1/ β -tubulin, cyclin D3/ β -tubulin and pERK/ERK from three experiments are shown.

tumour promoting rather than a tumour-suppressive effect. In colorectal and pancreatic carcinoma it was demonstrated that the growth inhibitory effect of activin A on tumour cells is lost by mutations in type I or type II activin receptors (Su *et al*, 2001; Hempen *et al*, 2003). In our MPM cell line series the main type I receptor for activin A (ALK4) was downregulated and the type II receptor ACVR2 was upregulated. However, the canonical activin/activin receptor/SMAD signalling axis was intact as evidenced by activin A-induced stimulation of SMAD2 phosphorylation.

Further confirming a pro-tumourigenic role of activin A in MPM, suppression of activin signals by two different inhibitors targeting activin receptor serine/threonine kinases led to a dose-dependent decrease of clonogenicity and, moreover, significantly delayed wound closure in scratch assays, reflecting an inhibitory effect on cell migration. As the available kinase inhibitors also target the TGF- β receptor ALK5 (Inman *et al*, 2002), we further confirmed our results more specifically by silencing activin expression with siRNA, which resulted in decreased viability both in short- and long-term assays.

Several reports have attributed effects of activin A to non-canonical activation of the MAPK pathway (Grusch *et al*, 2010) and to cell type-dependent positive (Ogawa *et al*, 2003) or negative (Yamato *et al*, 1997) regulation of cyclin D2 expression. Although stimulation with activin A for 30 min showed no indication for MAPK activation, VMC20 cells with high endogenous activin A expression and pSMAD2 levels responded to activin silencing with reduced levels of pERK, cyclin D1 and cyclin D3, which may at least in part explain the observed growth suppression. However, in contrast to a report on prostate cancer cells (Ying *et al*, 1997), no regulation of p53 by activin A treatment or silencing was observed in MPM cells (data not shown).

The finding that the kinase inhibitors had a greater antigrowth impact than the siRNA may implicate that also TGF- β has a role in MPM cell growth. This is in line with previous results (Suzuki *et al*, 2007) and has led to the initiation of a clinical study with a monoclonal antibody targeting TGF- β in relapsed MPM (<http://ClinicalTrials.gov> Identifier: NCT01112293). Our data indicate that also activin A may represent a potential target for intervention in MPM. In this regard, kinase inhibitors co-targeting TGF- β and activin receptors may even be of some advantage as increased efficiency of multitargeted approaches is also being discussed for tyrosine kinase inhibitors, for instance in lung cancer (Socinski, 2011).

In summary, our investigation for the first time addresses the role of activins in MPM and suggests them as valuable candidates for further evaluation.

ACKNOWLEDGEMENTS

We thank Barbara Dekan for perfect technical assistance with the Western blots. We acknowledge the Grant support by the Fund of the

REFERENCES

- Antisferova M, Huber M, Meyer M, Piwko-Czuchra A, Ramadan T, Macleod AS, Havran WL, Dummer R, Hohl D, Werner S (2011) Activin enhances skin tumorigenesis and malignant progression by inducing a pro-tumorigenic immune cell response. *Nat Commun* 2: 576
- Burdette JE, Jeruss JS, Kurley SJ, Lee EJ, Woodruff TK (2005) Activin A mediates growth inhibition and cell cycle arrest through Smads in human breast cancer cells. *Cancer Res* 65: 7968–7975
- Chang KP, Kao HK, Liang Y, Cheng MH, Chang YL, Liu SC, Lin YC, Ko TY, Lee YS, Tsai CL, Wang TH, Hao SP, Tsai CN (2010) Overexpression of activin A in oral squamous cell carcinoma: association with poor prognosis and tumor progression. *Ann Surg Oncol* 17: 1945–1956
- Chen W, Woodruff TK, Mayo KE (2000) Activin A-induced HepG2 liver cell apoptosis: involvement of activin receptors and smad proteins. *Endocrinology* 141: 1263–1272
- Fitzpatrick DR, Bielefeldt-Ohmann H, Himbeck RP, Jarnicki AG, Marzo AL, Robinson BW (1994) Transforming growth factor-beta: antisense RNA-mediated inhibition affects anchorage-independent growth, tumorigenicity and tumor-infiltrating T-cells in malignant mesothelioma. *Growth Factors* 11: 29–44
- Frost K, Seir K, Lackner A, Grusch M, Grasl-Kraupp B, Schulte-Hermann R, Rodgarkia-Dara C (2011) Inhibin/activin expression in human and rodent liver: subunits alpha and betaB as new players in human hepatocellular carcinoma? *Br J Cancer* 104: 1303–1312
- Gold E, Jetly N, O'Bryan MK, Meachem S, Srinivasan D, Behuria S, Sanchez-Partida LG, Woodruff T, Hedwards S, Wang H, McDougall H, Casey V, Niranjana B, Patella S, Risbridger G (2009) Activin C antagonizes activin A in vitro and overexpression leads to pathologies *in vivo*. *Am J Pathol* 174: 184–195
- Grusch M, Drucker C, Peter-Vorosmarty B, Erlach N, Lackner A, Losert A, Macheiner D, Schneider WJ, Hermann M, Groome NP, Parzefall W, Berger W, Grasl-Kraupp B, Schulte-Hermann R (2006) Deregulation of the activin/follistatin system in hepatocarcinogenesis. *J Hepatol* 45: 673–680
- Grusch M, Petz M, Metzner T, Ozturk D, Schneller D, Mikulits W (2010) The crosstalk of RAS with the TGF-beta family during carcinoma progression and its implications for targeted cancer therapy. *Curr Cancer Drug Targets* 10: 849–857
- Hempfen PM, Zhang L, Bansal RK, Iacobuzio-Donahue CA, Murphy KM, Maitra A, Vogelstein B, Whitehead RH, Markowitz SD, Willson JK, Yeo CJ, Hruban RH, Kern SE (2003) Evidence of selection for clones having genetic inactivation of the activin A type II receptor (ACVR2) gene in gastrointestinal cancers. *Cancer Res* 63: 994–999
- Hoda MA, Mohamed A, Ghanim B, Filipits M, Hegedus B, Tamura M, Berta J, Kubista B, Dome B, Grusch M, Setinek U, Micksche M, Klepetko W, Berger W (2011) Temsirolimus inhibits malignant pleural mesothelioma growth *in vitro* and *in vivo*: synergism with chemotherapy. *J Thorac Oncol* 6: 852–863
- Inman GJ, Nicolas FJ, Callahan JF, Harling JD, Gaster LM, Reith AD, Laping NJ, Hill CS (2002) SB-431542 is a potent and specific inhibitor of transforming growth factor-beta superfamily type I activin receptor-like kinase (ALK) receptors ALK4, ALK5, and ALK7. *Mol Pharmacol* 62: 65–74
- Jackman DM (2009) Current options for systemic therapy in mesothelioma. *Semin Thorac Cardiovasc Surg* 21: 154–158
- Jeruss JS, Sturgis CD, Rademaker AW, Woodruff TK (2003) Down-regulation of activin, activin receptors, and Smads in high-grade breast cancer. *Cancer Res* 63: 3783–3790
- Jung B, Doctolero RT, Tajima A, Nguyen AK, Keku T, Sandler RS, Carethers JM (2004) Loss of activin receptor type 2 protein expression in microsatellite unstable colon cancers. *Gastroenterology* 126: 654–659
- Kelly RJ, Sharon E, Hassan R (2011) Chemotherapy and targeted therapies for unresectable malignant mesothelioma. *Lung Cancer* 73: 256–263
- Musk AW, Olsen N, Alfonso H, Reid A, Mina R, Franklin P, Sleith J, Hammond N, Threlfall T, Shilkin KB, de Klerk NH (2011) Predicting survival in malignant mesothelioma. *Eur Respir J* 38: 1420–1424
- Ogawa T, Yogo K, Ishida N, Takeya T (2003) Synergistic effects of activin and FSH on hyperphosphorylation of Rb and G1/S transition in rat primary granulosa cells. *Mol Cell Endocrinol* 210: 31–38
- Peto J, Decarli A, La Vecchia C, Levi F, Negri E (1999) The European mesothelioma epidemic. *Br J Cancer* 79: 666–672
- Razanajaona D, Joguet S, Ay AS, Treilleux I, Goddard-Leon S, Bartholin L, Rimokh R (2007) Silencing of FLRG, an antagonist of activin, inhibits human breast tumor cell growth. *Cancer Res* 67: 7223–7229
- Risbridger GP, Schmitt JF, Robertson DM (2001) Activins and inhibins in endocrine and other tumors. *Endocr Rev* 22: 836–858
- Robinson BW, Lake RA (2005) Advances in malignant mesothelioma. *N Engl J Med* 353: 1591–1603
- Sagmeister S, Eisenbauer M, Pirker C, Mohr T, Holzmann K, Zwickl H, Bichler C, Kandioler D, Wrba F, Mikulits W, Gerner C, Shehata M, Majdic O, Streubel B, Berger W, Micksche M, Zatloukal K, Schulte-Hermann R, Grasl-Kraupp B (2008) New cellular tools reveal complex epithelial-mesenchymal interactions in hepatocarcinogenesis. *Br J Cancer* 99: 151–159
- Seder CW, Hartojo W, Lin L, Silvers AL, Wang Z, Thomas DG, Giordano TJ, Chen G, Chang AC, Orringer MB, Beer DG (2009a) INHBA overexpression promotes cell proliferation and may be epigenetically regulated in esophageal adenocarcinoma. *J Thorac Oncol* 4: 455–462
- Seder CW, Hartojo W, Lin L, Silvers AL, Wang Z, Thomas DG, Giordano TJ, Chen G, Chang AC, Orringer MB, Beer DG (2009b) Upregulated INHBA expression may promote cell proliferation and is associated with poor survival in lung adenocarcinoma. *Neoplasia* 11: 388–396
- Socinski MA (2011) Multitargeted receptor tyrosine kinase inhibition: an antiangiogenic strategy in non-small cell lung cancer. *Cancer Treat Rev* 37: 611–617
- Stove C, Vanrobaeys F, Devreese B, Van Beeumen J, Mareel M, Bracke M (2004) Melanoma cells secrete follistatin, an antagonist of activin-mediated growth inhibition. *Oncogene* 23: 5330–5339
- Su GH, Bansal R, Murphy KM, Montgomery E, Yeo CJ, Hruban RH, Kern SE (2001) ACVR1B (ALK4, activin receptor type 1B) gene mutations in pancreatic carcinoma. *Proc Natl Acad Sci USA* 98: 3254–3257
- Sugarbaker DJ, Garcia JP, Richards WG, Harpole Jr. DH, Healy-Baldini E, DeCamp Jr. MM, Mentzer SJ, Liptay MJ, Strauss GM, Swanson SJ (1996) Extrapleural pneumonectomy in the multimodality therapy of malignant pleural mesothelioma. Results in 120 consecutive patients. *Ann Surg* 224: 288–294; (discussion 294–286)
- Suzuki E, Kim S, Cheung HK, Corbly MJ, Zhang X, Sun L, Shan F, Singh J, Lee WC, Albelda SM, Ling LE (2007) A novel small-molecule inhibitor of transforming growth factor beta type I receptor kinase (SM16) inhibits murine mesothelioma tumor growth *in vivo* and prevents tumor recurrence after surgical resection. *Cancer Res* 67: 2351–2359
- Tanaka T, Toujima S, Umesaki N (2004) Activin A inhibits growth-inhibitory signals by TGF-beta1 in differentiated human endometrial adenocarcinoma cells. *Oncol Rep* 11: 875–879
- Tsuchida K, Nakatani M, Hitachi K, Uezumi A, Sunada Y, Ageta H, Inokuchi K (2009) Activin signaling as an emerging target for therapeutic interventions. *Cell Commun Signal* 7: 15
- Vejda S, Erlach N, Peter B, Drucker C, Rossmannith W, Pohl J, Schulte-Hermann R, Grusch M (2003) Expression of activins C and E induces apoptosis in human and rat hepatoma cells. *Carcinogenesis* 24: 1801–1809

City of Vienna for Innovative Interdisciplinary Cancer Research to MAH and by the Herzfelder Foundation to MG.

Conflict of interest

The authors declare no conflict of interest.

Supplementary Information accompanies the paper on British Journal of Cancer website (<http://www.nature.com/bjc>)

- Vogelzang NJ, Rusthoven JJ, Symanowski J, Denham C, Kaukel E, Ruffie P, Gatzemeier U, Boyer M, Emri S, Manegold C, Niyikiza C, Paoletti P (2003) Phase III study of pemetrexed in combination with cisplatin versus cisplatin alone in patients with malignant pleural mesothelioma. *J Clin Oncol* 21: 2636–2644
- Wang Q, Wen YG, Li DP, Xia J, Zhou CZ, Yan DW, Tang HM, Peng ZH (2010) Upregulated INHBA expression is associated with poor survival in gastric cancer. *Med Oncol* 29(1): 77–83
- Wang QF, Tilly KI, Tilly JL, Preffer F, Schneyer AL, Crowley Jr. WF, Sluss PM (1996) Activin inhibits basal and androgen-stimulated proliferation and induces apoptosis in the human prostatic cancer cell line, LNCaP. *Endocrinology* 137: 5476–5483
- Werner S, Alzheimer C (2006) Roles of activin in tissue repair, fibrosis, and inflammatory disease. *Cytokine Growth Factor Rev* 17: 157–171
- Yamato K, Koseki T, Ohguchi M, Kizaki M, Ikeda Y, Nishihara T (1997) Activin A induction of cell-cycle arrest involves modulation of cyclin D2 and p21CIP1/WAF1 in plasmacytic cells. *Mol Endocrinol* 11: 1044–1052
- Ying S, Zhang Z, Batres Y, Zhao Y, Lin S, Li G (1997) p53 is involved in the inhibition of cell proliferation mediated by activin A in cultured human prostate cancer LNCaP cells. *Int J Oncol* 11: 591–595
- Yoshinaga K, Mimori K, Yamashita K, Utsunomiya T, Inoue H, Mori M (2003) Clinical significance of the expression of activin A in esophageal carcinoma. *Int J Oncol* 22: 75–80
- Yoshinaga K, Yamashita K, Mimori K, Tanaka F, Inoue H, Mori M (2008) Activin a causes cancer cell aggressiveness in esophageal squamous cell carcinoma cells. *Ann Surg Oncol* 15: 96–103
- Zucali PA, Giaccone G (2006) Biology and management of malignant pleural mesothelioma. *Eur J Cancer* 42: 2706–2714

This work is published under the standard license to publish agreement. After 12 months the work will become freely available and the license terms will switch to a Creative Commons Attribution-NonCommercial-Share Alike 3.0 Unported License.