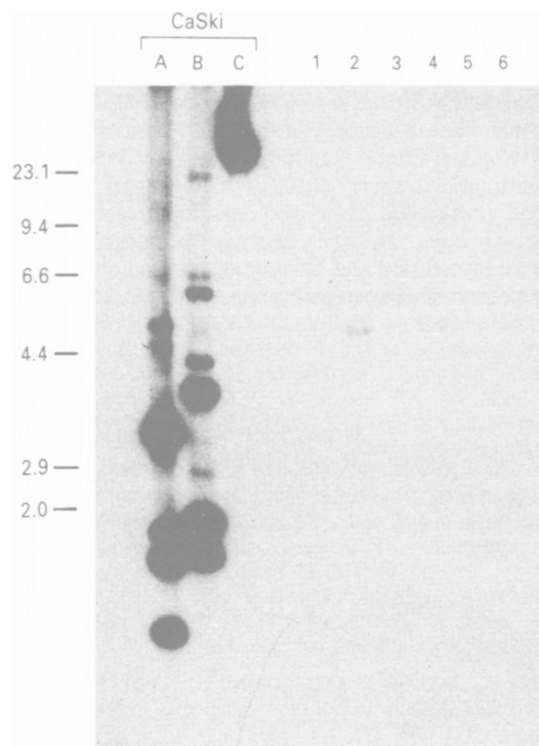


## Corrigendum

### Human papillomavirus in vulvar and vaginal carcinoma cell lines

S Hietanen, S Grenman, K Syrjänen, K Lappalainen, J Kauppinen, T Carey and S Syrjänen *Br. J. Cancer* (1995) 72, 134-139. Since the publication of the above paper, the authors have identified an error in the legend for Figure 4. The correct version is shown below:



**Figure 4** Same filter as in Figure 2 now hybridised with HPV 16 probe under high stringency. Exposure: 8 days.