

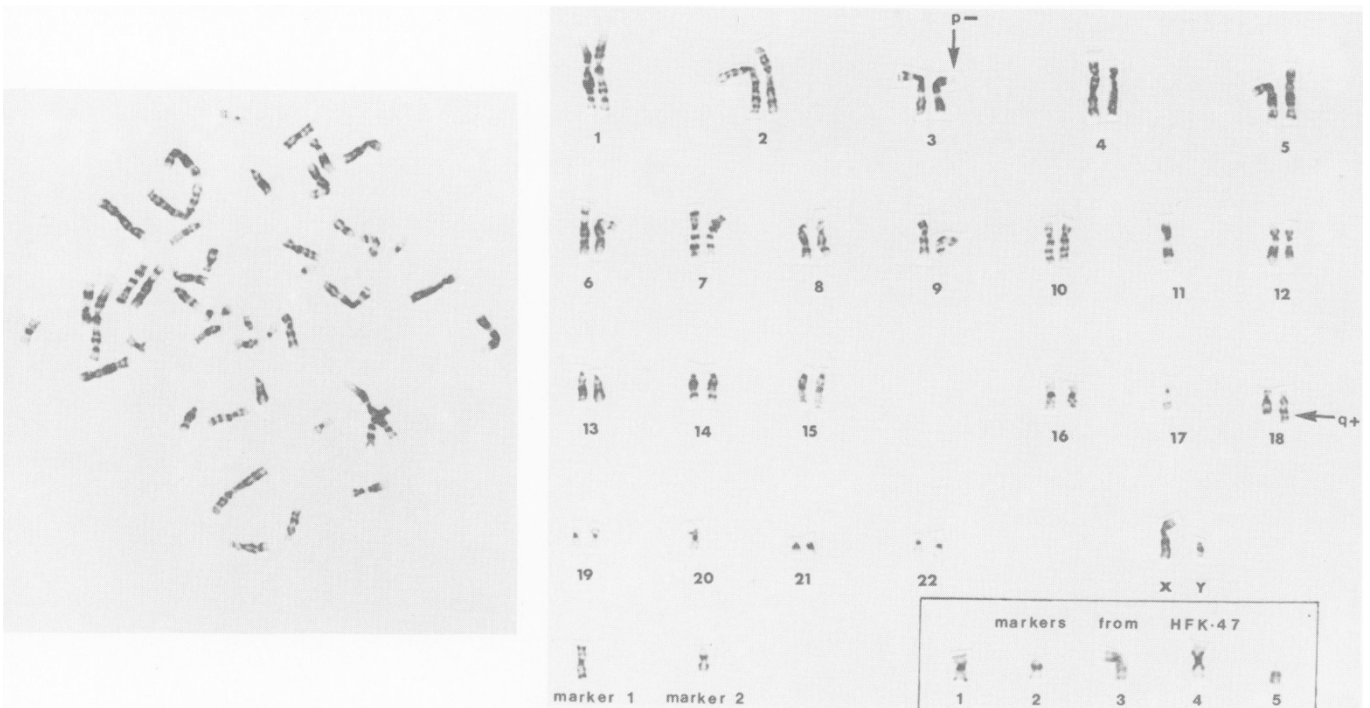
# Erratum

Vol 56, 545-554

Malignant progression of an SV40-transformed human epidermal keratinocyte cell line.

Page 548 -

The reproduction of **Figure 2** was sub-optimal and is reprinted below with legend:



**Figure 2** Giemsa banded karyotype of the clone observed in the SV6-1 Bam/HFK induced SCCs, The marker chromosomes observed in SV6-1 Bam-HFK at passage 47, are shown in the insert.

Some transposition occurred in the legends to **Figures 5 and 6**. The corrected legends are as follows:

Page 551 -

**Figure 5** Indirect immunofluorescence of a nude mouse cyst formed by SV6-1 Bam/HFK at passage 17 (8 days post-inoculation). (a) SV40 T-antigen; (b) keratin; (c) human fibronectin (IST2 monoclonal antibody). (d) and (e), double staining of the same field; (d), laminin; and (e) SV40 T-antigen. Bars=100  $\mu$ m for (a-c).  $\times 120$  and 20  $\mu$ m for (d), (e).  $\times 500$ .

Page 552 -

**Figure 6** Indirect immunofluorescence of a nude mouse tumour formed by SV6-1 Bam/HFK at passage 47 (60 days post-inoculation). (a), keratin; (c), fibronectin and (e) laminin; and (b), (d) and (f), SV40 T-antigen. (a-b), (c-d) and (e-f) are pairs showing the same fields double stained for T-antigen and keratin or fibronectin or laminin. Bars = 20  $\mu$ m  $\times 500$ .