

# New products and focus on implants

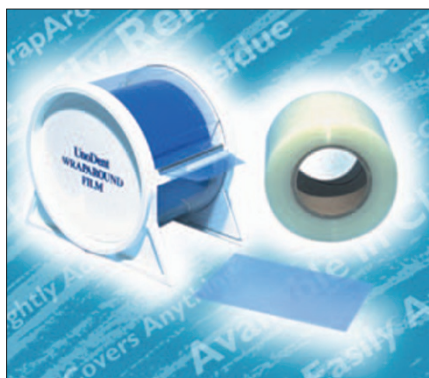
Please send trade news information and illustrations to Arveen Bajaj at the BDJ, Nature Publishing Group, The Macmillan Building, 4-6 Crinan Street, London N1 9XW.

Trade news is provided as a service to readers using text and images from the manufacturer, supplier or distributor and does not imply endorsement by the BDJ. Normal and prudent research should be exercised before purchase or use of any product mentioned.

## ALL ROUND SURGICAL PROTECTION

WrapAround by UnoDent is a range of high quality protective barrier products that prevent cross-infection during clinical procedures such as implant surgery. Included in the range is barrier film, protective sleeves for tubes, X-rays, syringes and curing lights as well as protective clothing and chair covers.

**Reader response number 50**



## IMPLANT SOLUTIONS RANGE OFFERS GREATER STABILITY

Nobel Biocare's range of implant products includes the NobelActive, Procera Software 2.0, the Curvy Abutment and the NobelGuide Zygoma. The variable thread profile of NobelActive has been designed to function like a corkscrew in bone; this action condenses bone, leading to greater initial stability and lessened osteotomies.

The thread design also produces a self-drilling property, which often allows the implant to be placed with fewer drilling steps and to be reoriented during insertion.

NobelActive will be available in external and internal configurations. Both feature unique conical abutment connections, which have been designed to eliminate possible micro gaps.

Procera Software 2.0 provides enhanced features and benefits to both dental laboratories and NobelGuide users, including a more user-friendly interface, new Order Manager and online updates.

The Curvy Abutment is a titanium implant abutment designed to stabilise and promote a good soft tissue seal. It has a unique concave waist that provides more surface area to which soft tissue can grow, which can lead to better short and long-term aesthetics. This new abutment can be used with both NobelReplace and Brånemark System implants.

Lastly the NobelGuide Zygoma is an extension of the planning and treatment system NobelGuide, which now provides 3D pre-planning and template-guided placement of Brånemark System Zygoma Implants. It further strengthens clinicians' offerings of predictable, less-painful, graftless rehabilitations.

**Reader response number 53**

## ELIMINATE MOUTH ULCER PAIN IN SECONDS

Oralmedic from Ceuta Healthcare is a new product for the simple and hygienic treatment of mouth ulcers. Consisting of an easy-to-use cotton bud format, the patient simply snaps one end of the stick to permeate the bud with the patented active ingredient, HybenX, before applying it to the

affected area for 5-10 seconds.

Oralmedic then gets straight to the site of infection, seeking out dead and damaged tissue and reacting with it to create a seal over the site, thus protecting it and promoting the natural healing process.

**Reader response number 51**

## SELF-DRILLING MINI-IMPLANTS

DB Orthodontics' Infinitas mini-implant system incorporates several design features. It consists of five colour-coded sizes: 2 mm mini-implants are used in edentulous regions and 1.5 mm mini-implants inbetween roots. Each is self-drilling, eliminating the need for tapping drills, and features a universal head compatible with Standard Niti springs, Powerchain and 0.021 x 0.025" archwire.

To facilitate placement in dense bone the system also includes a bone punch to perforate only the cortical bone. Another feature is the screw thread design. Infinitas' threads run right up to the transmucosal neck.

The mini-implants are 2 mm wide in the cortical area, while the 1.5 mm diameter mini-implants taper to 2 mm in the cortical region. Finally the Infinitas system offers

a unique 3D Stent Guidance Kit. Quick and easy to use, it enables laboratories to produce up to five patient specific stents for pre-planned placement of the mini-implants.

**Reader response number 52**



### CLEANING IMPLANT SURFACES WITH MINIMUM TRAUMA

Kerr's Implant Deplaquer instruments are made of a high-tech polymer material. They are strong enough to remove plaque and calculus from the implant neck without scratching the implant surface.

The fine, rounded instrument end allows gentle retraction of the gingiva for cleaning sub-gingivally with a minimum of trauma. The specially shaped instrument blade allows for the efficient cleaning of the implant from all angles, as the Deplaquer's tips have been designed to match the symmetrical design of all major implant systems.

The Deplaquer can also be re-sharpened using standard sharpening procedures and is autoclavable at 134°C for at least three minutes.

**Reader response number 54**



### STRAIGHTFORWARD HANDLING

Straumann's Bone Level Implant has been developed using Bone Control Design, a concept which helps to preserve bone and provide the foundation for long-term aesthetic success.



The new-generation implant respects key biological principles, facilitates predictable aesthetic results and offers straightforward handling in all indications. It also features the CrossFit Connection, applying the know-how and benefits from the Morse Taper connection to the needs of a connection located at bone level.

The self-guiding internal prosthetic connection has an optimised design for long-term mechanical stability under all loading conditions and ensures an exact fit between implant and abutment.

**Reader response number 58**

### PERSONALISE PATIENT DOCUMENTS

New functionality has now been added to software programme Exact from Software of Excellence (SOE) to make it easier to collect and arrange details into an appropriate document. The new Presentation Manager will allow personalised documents to be designed in minutes.

A range of patient-friendly documents that integrate patient education slides, intra-oral camera pictures, digital X-rays and patient specific treat-

ment options and estimates can be produced quickly and professionally.

Templates within the software can easily be modified to make patient specific documents that are saved into a patient's file for future reference. To get you started, SOE have a list of suggested templates which can be reworked as you see fit.

Patient communication can now become a marketing tool and documents can also be printed or emailed to patients.

**Reader response number 55**

### NEW DUAL CURE TEMPORARY MATERIAL LAUNCHED

Coltène Whaledent has launched DuoTemp, a new dual cure temporary material for use in all indications. With the advantages of high marginal seal due to slight expansion, good retention in the cavity, easy removal and containing fluoride and zinc oxide, this material is ideal for short term temporary applications.

DuoTemp is radiopaque, eugenol free and tooth coloured and can be cured with light and saliva. It is available in individ-



ual five gram syringe sterile packs.

**Reader response number 56**

### HIGH GLOSS SURFACE

Parapan is a solid high-gloss acrylic, used increasingly in surgery settings. The hard wearing material is easy to clean and its durability and moisture resistance make it ideal for hygiene critical environments.

It is available in 20 colours and can be thermoformed into curves for rounded doors on cupboards or drawers or for wall cladding. Homogeneous, totally non-absorbent and resistant to UV light, Parapan's colours never fade or lose their glossy finish

**Reader response number 57**

### NEW CONSENT PROTOCOLS

Admor, in association with Dental Protection, has introduced a new consent protocol for tooth whitening. The treatment consent protocols offer essential assistance to dentists and provide some protection against costs and damages in dental negligence claims.

It includes a section offering general instructions to the dentist to ensure that consent is gained in an appropriate manner. There is also a page containing general information for patients, providing them with advice about the tooth-whitening process, the different techniques available, the risks involved and existing alternative procedures.

The protocol also includes a two-part consultation record, providing both dentist and patient with a copy. This form provides a record of any consultations, including the staff present, reasons for treatment and the risk involved.

**Reader response number 59**

## 24-HOUR ORDERING

Kent Connect online ordering offers Kent Express customers the freedom to order at any time of the day or night. Easy and quick to use it provides rapid access to a range of Kent express products, news bulletins, special offers and promotions. All orders placed online receive an additional discount of 1.5%.

Getting started is quick and simple: just load the Kent Connect auto-run installation CD into your PC. Programme installation will take about five minutes, then call the help desk on 08705 143 175 so they can set up your password.

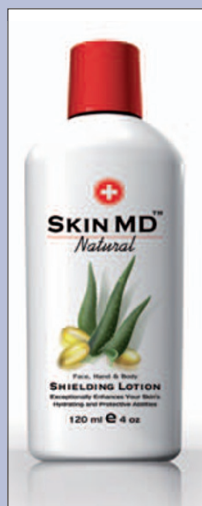
With Kent Connect you can keep a full product history, which can be checked

at any time. It also allows you to view, print and query previous purchases.

**Reader response number 60**



## NEW HAND LOTION WORKS AS INVISIBLE SHIELD



A new hand lotion has been recently launched in the UK by 21st Century Formulations. Skin MD Natural is quickly absorbed, without any greasy, oily feeling or residue, transforming the outer layer of skin into a hydrating invisible shield.

The proprietary formulation in Skin MD Natural has a moisturising factor at least six times greater than glycerine and it utilises effective natural ingredients along with the latest advances in skin care technology to hydrate and protect the skin.

The biggest market for Skin MD Natural is as an alternative to conventional hand lotions which only attempt to replace natural moisture with artificial moisture which constantly comes off and must be frequently reapplied.

**Reader response number 61**

## NEW INSTRUMENT LAUNCHED

Dentsply Ash Instruments have developed a new, colourful range of restorative and periodontal hand instruments called Artio. Artio instruments are ultra-lightweight at around 14 g each, which means less strain on your hands while working. The grip on the instrument has also been carefully designed to excel in a wet environment.

Available in a range of colours to help

quick identification of their use, the instruments combine style and comfort with affordable pricing and have periodontal and restorative tip options.

In addition, for every Artio instrument sold, Dentsply will donate 50p to the Mouth Cancer Foundation, a charity solely dedicated to supporting people with mouth, throat and other head and neck cancers.

**Reader response number 62**

