

Please send trade news information and illustrations to Arveen Bajaj at the *BDJ*, Nature Publishing Group, The Macmillan Building, 4-6 Crinan Street, London N1 9XW. Trade news is provided as a service to readers using text and images from the manufacturer, supplier or distributor and does not imply endorsement by the *BDJ*. Normal and prudent research should be exercised before purchase or use of any product mentioned.

New natural alternative toothpaste

Beverly Hills Formula Natural toothpaste contains the natural gum protection of aloe vera and echinacea. Aloe vera can strengthen the body's defensive system and contains various ingredients which can help to protect against periodontitis and other diseases that can start in the mouth.



Echinacea acts as an effective ingredient against bacteria and viruses. Green tea extracts have adverse effects on the bacteria that cause dental caries and other infections while Q10 protects against periodontal decline, decreasing decay as well as healing gums whilst naturally combating the causes of plaque, tartar, bad breath, cavities and gum problems.

The gentle natural toothpaste has whitening power and no artificial colouring or flavours, nor does it contain sodium lauryl sulphate. Beverly Hills Formula Natural contains Xylitol while the long-lasting natural mint flavour freshens your mouth each time you brush.

Reader response number 50

Festive cards for dental charity

You can support the dentistry profession this Christmas by purchasing your greetings cards from the Benevolent Fund, a registered charity which supports dentists and their dependants financially through grants and interest free loans, and offers friendship, guidance and emotional support during difficult times.

As a charity the Benevolent Fund

depends on the dental profession to spread the word about the help it offers, and relies entirely on their generosity for its continued existence. With no financial support from outside the profession the Benevolent Fund is always looking for ways to raise money.

This year it has selected two Christmas cards, the profits of which will of course go to the charity. The cards are a way to spread the word and show your support for the Fund.

Reader response number 51

Rapid snap set

Diamond Carve from Kemdent is a glass ionomer based on a distinct ingredient, a specialist glass polyphosphonate cement. This ingredient contributes to the features of Diamond Carve, including versatility and strength, saliva resistance, finishing qualities and wear resistance properties.

The product is mainly used for Class I and Class II restorations together with Class V abrasion cavities. It is also used for restorations in deciduous teeth, core build up, amalgam repair and the cementing of posts in



root canal treatments. It is available in seven shades.

Under lock and key



Servocell has recently announced the launch of its ready to go range of cabinet latch systems for the healthcare sector. The range provides an unobtrusive electronic lock mechanism for internal applications where previously the only viable solution was a mechanical lock.

The product, which is based around Servocell's patented active latch technology, is easily retrofitted into existing furniture as a standalone system with its own access control, and will shortly be available in versions that can connect to existing wired or wireless infrastructure. Measuring less than 12 mm in thickness, the locks can be discreetly fitted to cabinet floors, or down the side of drawers.

Reader response number 52

Diamond Carve has a packable consistency which is chemically cured and rapid snap set into position. The restoration is waterproof once the chemical snap set is complete.

The consistency of the mix of Diamond Carve, its durability and ease of use will help a dentist perform a restoratively-based treatment accurately and quickly.

The company is running a Christmas special offer where if you buy any three Diamond GIC products you can receive the cheapest for £10.00. The offer is valid until 31 December.

Reader response number 53

IMAGING

Images automatically transmitted to your PC

Schick Technologies' integrated range of products includes the CDR Wireless, which forms part of the Schick Digital Imaging System. Schick CDR Wireless is a wireless intraoral sensor. Each image is instantly and automatically transmitted to your PC via radio waves.

Complementing your existing CDR systems, Schick CDR Wireless enables greater mobility at chairside, simplifying sensor placement, while providing the same immaculate image quality and reduced radiation exposure you expect from its wired sensors.

For practices that want to go digital without replacing their current film-based OPG, the company can provide a Digital Retrofit Kit. The kit fits quickly and easily to almost any manufacturer's



machine without any permanent modifications required.

Alternatively for practices that want a new Digital OPG, Schick Technologies offer the CDRPanX and the CDRPanX C designed to provide both optimal patient positioning and outstanding image quality. Both machines provide sharp, clear, clinically precise images. All are available from Clark Dental.

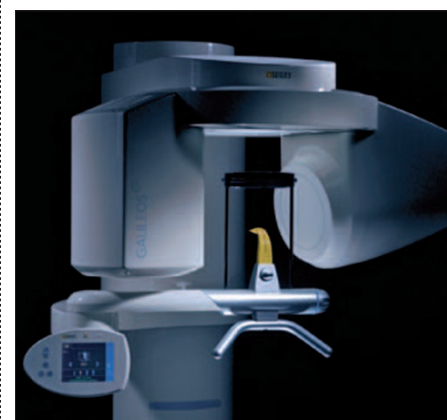
Reader response number 54

Quicker quality images

The Galileos 3D conebeam scanner from Sirona in the Henry Schein Platinum range offers imaging in three dimensions from an easy to operate machine. Conebeam imaging technology exposes patients to less radiation than more common CT techniques as well as being much quicker at producing quality images. A single, low-dose 3D scan is all you need for a completely diagnosable dental volume.

The diagnostics are clearly shown as a familiar pan image with a unique slicing window allowing the clinician to navigate, in real time, throughout the three dimensional image. From one single scan, panoramic, CEPH, cross sectional slice and radiological views can be produced.

Reader response number 55



Mini-head design

The Digirex dental radiography system is technology that provides high definition imaging for in-depth examination and precise diagnosis.

Achievable in seconds, you and your patients benefit from instant image viewing and the ability to adjust or magnify images for optimum accuracy.

For those who use conventional X-ray equipment but would like the benefit of digital technology, you can benefit from

Evident's video X-ray film viewer TelereX, enabling you to instantly view X-ray films and digitise or store them onto your computer.

Capturing an instant, clear image of your patient's mouth, the advanced USB intraoral camera, Cammy, allows your patient to see exactly what you are seeing.

Thanks to its distinctive mini-head design you can access even the hardest to reach areas, helping identify problems often missed on initial examination.

Reader response number 56

Digital impressing technique

The Cerec System from Ceramic Systems utilises a digital impressing technique to enable dentists to create sophisticated chairside all-ceramic restorations, while eliminating the need for messy and time consuming impressions.

The system captures the data which is then used to design the restoration



milled from a solid block in the milling unit via a wireless connection. The milling unit can be situated anywhere that is convenient within the practice.

Combined with adhesive bonding techniques, Cerec creates biocompatible, non-metallic, natural-looking restorations from durable high-quality ceramic materials in a single treatment session - without the need for provisional restorations.

Reader response number 57

Panoramic restorations

PracticeWorks, providers of Kodak Dental System products, are now distributors of the Iluma Ultra Cone Beam CT Scanner – a state-of-the-art all in one radiographic machine.

Engineered by Imtec Imaging, the Iluma Cone Beam CT Scanner uses the most recent evolutions in cone beam volumetric tomography to construct high-tech images, providing dental professionals with a high image resolution of anatomically correct views along with additional software options for cross-sectional viewing, panoramic restorations,

volume rendering and nerve display.

Iluma emits lower radiation doses than conventional CT scanners and produces accurate 3D radiographic images in around four minutes for simplified diagnosis, planning and treatment of oral surgery, orthodontics and other dental procedures.

By showing patients the images taken and talking them through the proposed treatment plan you can increase the likelihood of patients accepting your proposed treatment plans, suggesting that the system could actually pay for itself.

This simple to use software is supported by quality after sales service with online remote-technical support capabilities to reduce downtime.

Reader response number 58

Logical patient positioning system

Incorporating a colour touch screen, electronic platform and software upgrade options the Orthophos XG, from Sident Dental Systems is easy to operate and has a logical patient positioning system that for optimum imaging results.

Its user interface is clearly laid out and easy to understand and its touch screen graphics make selection of functions easy whilst eliminating operator errors. Practices can choose between standard, constant magnification or artefact-free imaging.

Reader response number 59



Disposable radiography holder

Dentsply has launched a new disposable radiography holder. The UniGrip has been designed to produce an entire full mouth series using only one, disposable holder. By sliding the bitepiece along the colour-coded channels, it allows you to take anterior, posterior and bitewing X-rays.

The holders are universal, accommodating any size digital sensor or film/phosphor plate. They are easy to use, attaching in seconds and the repositioning of the bitepiece is quick and simple, providing the 'roundabout' is used.

For the digital sensor holders, in addition to its sticky back, it has wings that

wrap around the sensor so no slipping occurs – these should be fasten tightly.

The UniGripAR positioning arm and ring is also available and can be used to accurately align your collimator. This lightweight positioning arm is fully autoclavable and is colour-coded for quick and easy assembly for any position including anterior, posterior and bitewing X-rays. As part of this new launch, Dentsply are offering a promotion where you can buy two boxes of UniGrip (50 packs) and get a free UniGripAR aiming ring and arm.

Reader response number 60

Minimise distortion

The Gendex Orthoralix 9200 DDE from D B Dental Equipment is a diagnostic tool that offers a constant magnification factor and minimises distortion. It features simple operation and patient positioning and allows quick diagnosis and easy setting up.

It is available in two versions, the

Standard version includes basic panoramic programs plus an additional program for patients with malocclusion and orthodontic requirements. The Plus version incorporates additional programs and is ideal for more advanced procedures including implant planning. The ergonomic sensor module replaces the X-ray film cassette.

Reader response number 61