

Original Article

Discovery and structural optimization of 1-phenyl-3-(1-phenylethyl)urea derivatives as novel inhibitors of CRAC channel

Hai-zhen ZHANG^{1, #}, Xiao-lan XU^{2, #}, Hua-yan CHEN¹, Sher ALI², Dan WANG², Jun-wei YU², Tao XU^{2, *}, Fa-jun NAN^{1, *}

¹State Key Laboratory of Drug Research, The National Center for Drug Screening, Shanghai Institute of Materia Medica, Chinese Academy of Sciences, Shanghai 201203, China; ²National Key Laboratory of Biomacromolecules, Institute of Biophysics, Chinese Academy of Sciences, Beijing 100101, China

Aim: Ca²⁺-release-activated Ca²⁺ (CRAC) channel, a subfamily of store-operated channels, is formed by calcium release-activated calcium modulator 1 (ORAI1), and gated by stromal interaction molecule 1 (STIM1). CRAC channel may be a novel target for the treatment of immune disorders and allergy. The aim of this study was to identify novel small molecule CRAC channel inhibitors. **Methods:** HEK293 cells stably co-expressing both ORAI1 and STIM1 were used for high-throughput screening. A hit, 1-phenyl-3-(1-phenylethyl)urea, was identified that inhibited CRAC channels by targeting ORAI1. Five series of its derivatives were designed and synthesized, and their primary structure-activity relationships (SARs) were analyzed. All derivatives were assessed for their effects on Ca²⁺ influx through CRAC channels on HEK293 cells, cytotoxicity in Jurkat cells, and IL-2 production in Jurkat cells expressing ORAI1-SS-eGFP.

Results: A total of 19 hits were discovered in libraries containing 32 000 compounds using the high-throughput screening. 1-Phenyl-3-(1-phenylethyl)urea inhibited Ca²⁺ influx with IC₅₀ of 3.25±0.17 μmol/L. SAR study on its derivatives showed that the alkyl substituent on the α-position of the left-side benzylic amine (R1) was essential for Ca²⁺ influx inhibition and that the S-configuration was better than the R-configuration. The derivatives in which the right-side R3 was substituted by an electron-donating group showed more potent inhibitory activity than those that were substituted by electron-withdrawing groups. Furthermore, the free N-H of urea was not necessary to maintain the high potency of Ca²⁺ influx inhibition. The N,N'-disubstituted or N'-substituted derivatives showed relatively low cytotoxicity but maintained the ability to inhibit IL-2 production. Among them, compound **5b** showed an improved inhibition of IL-2 production and low cytotoxicity.

Conclusion: 1-Phenyl-3-(1-phenylethyl)urea is a novel CRAC channel inhibitor that specifically targets ORAI1. This study provides a new chemical scaffold for design and development of CRAC channel inhibitors with improved Ca²⁺ influx inhibition, immune inhibition and low cytotoxicity.

Keywords: CRAC channel; ORAI1; 1-phenyl-3-(1-phenylethyl)urea; YM58483; high-throughput screening; IL-2 production; structure modification; SAR

Acta Pharmacologica Sinica (2015) 36: 1137–1144; doi: 10.1038/aps.2015.52; published online 10 Aug 2015

Introduction

Ca²⁺-release-activated Ca²⁺ (CRAC) channel belongs to a subfamily of store-operated channels that possess the characteristic features of an inwardly rectifying current-voltage relationship^[1] and rapid Ca²⁺-dependent inactivation^[2]. The channel is formed by ORAI (CRACM, calcium release-activated calcium modulator), which is a 4-transmembrane protein and is gated

by a single-pass transmembrane protein, STIM (stromal interaction molecule), which functions as the sensor of the endoplasmic reticulum (ER) luminal Ca²⁺ concentration^[3]. Compared with other ion channels, CRAC channel currents have a substantially higher selectivity for Ca²⁺ over monovalent cations (PCa/PNa >1000)^[4], with low single-channel conductance (<1 pS)^[5] and a lack of significant voltage-dependent gating.

In recent years, several human diseases have been linked to abnormal CRAC channel activities, including severe combined immunodeficiency (SCID) disorders^[6], allergy^[7, 8], inflammatory bowel disease (IBD)^[9], thrombosis^[10], breast cancer^[11–13], Kawasaki disease^[14] and organ transplant rejection. Specific

[#] These authors contributed equally to this article.

^{*} To whom correspondence should be addressed.

E-mail xutao@ibp.ac.cn (Tao XU);

fjnan@simm.ac.cn (Fa-jun NAN)

Received 2015-01-25 Accepted 2015-04-27

CRAC channel inhibitors may be developed into new safe and potent immune suppressors, which would benefit patients with these diseases.

Thus far, a variety of small molecules blocking the CRAC channel have been identified, such as the imidazole derivative, SKF96365 (IC_{50} of approximately 4 $\mu\text{mol/L}$)^[15, 16], 2-APB [at low concentrations of 1–5 $\mu\text{mol/L}$, 2-APB potentiates CRAC currents, whereas high concentrations (>10 $\mu\text{mol/L}$) cause a transient enhancement of CRAC currents followed by a complete block in S2 for mammalian cells]^[17, 18], YM58483 (IC_{50} of approximately 150 nmol/L after 24 h of preincubation; IC_{50} of approximately 10 $\mu\text{mol/L}$ immediately after addition)^[19, 20], and Synta 66 (IC_{50} of approximately 3 $\mu\text{mol/L}$)^[21] (Figure 1); however, these compounds are not specific because they interfere with a variety of other transport processes. The only specific CRAC channel inhibitor tested in human is CM2489^[22], the structure of which has not yet been disclosed. Recent studies have suggested that blocking CRAC channel activity by inhibiting STIM1 may inadvertently affect other channels^[23]. Moreover, STIM1 mutations are associated with a syndrome of immunodeficiency and autoimmunity, whereas ORAI1 mutations cause only a major clinical syndrome of immunodeficiency^[24]. Therefore, molecules that specifically block ORAI1 may have fewer side effects compared with molecules that target STIM1. This is the focus and priority of CRAC channel research (Figure 1).

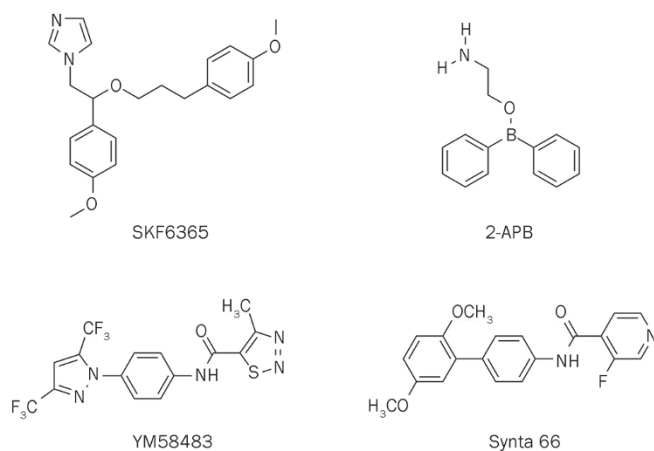


Figure 1. Structures of known CRAC channel inhibitors.

To identify small chemical molecules that block CRAC channel activity, we established an ORAI1 and STIM1 stably co-expressed single-cell clone human embryonic kidney 293 (HEK293) cell line and performed high-throughput screening of libraries containing 32000 compounds using a fluorescence assay of Ca^{2+} influx. The average Z-factor of the screen was approximately 0.74, and the coefficient of variation was 4.7%. Hits in the screen were defined by a significantly reduced cytosolic Ca^{2+} level [inhibition rate \geq MEAN (signal means) +3 \times STDEV (standard deviations)] elevated by thapsigargin

(TG). A total of 19 hits were identified in the screen. Of these, 8 compounds were lanthanide complexes, 3 compounds showed strong cytotoxicity, and 2 compounds exhibited weak inhibition using the patch clamp technique. We selected compound **1** from the remaining 6 compounds because this compound presents a novel chemical scaffold and good drug-like properties, which makes it different from the known CRAC channel inhibitors. In this study, we synthesized a series of structure closed analogs (**2a-2h**, **3a-3l**, **4a-4j**, and **5a-5j**), with modifications of the left-side benzylamine subunit and right-side phenyl subunit of compound **1**, and determined the primary structure-activity relationships (SARs). Several compounds showed improved potency and immune inhibitory activity. Compound **1** inhibits the CRAC channel by specifically targeting the ORAI1 protein. We propose this derivative as a potential scaffold for developing novel CRAC channel inhibitors (Figure 2).

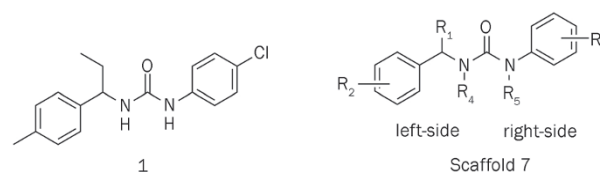


Figure 2. Structure of original hit compound **1**.

Materials and methods

Chemistry

The experimental procedures and characterization of all compounds are provided in the Supplementary Information.

Biology experiment

$[Ca^{2+}]_i$ measurement

The intracellular calcium level was measured in 96-well plates using an automated fluorometric imaging plate reader (FLIPR, Molecular Devices, Sunnyvale, CA, USA). Either HEK293 or Chinese hamster ovary (CHO) cells, which stably expressed ORAI1 and STIM1, were pre-incubated with 4 $\mu\text{mol/L}$ Fluo-4/AM (Invitrogen) in standard extracellular Ringer's solution (145 mmol/L NaCl, 4.5 mmol/L KCl, 2 mmol/L $CaCl_2$, 1 mmol/L $MgCl_2$, 10 mmol/L D-glucose, and 5 mmol/L Hepes, pH adjusted to 7.4 with NaOH) supplemented with 2.5 mmol/L probenecid at 37°C for 30–45 min. The cells were washed twice and then immersed in standard extracellular Ringer's solution. The change in Fluo-4 fluorescence was systematically assessed as follows: we first tested the basal calcium level for 30 s; we next added 1 $\mu\text{mol/L}$ TG to open the CRAC channel and constantly measured the calcium level for 3 min; finally, we added a designated concentration (10 $\mu\text{mol/L}$) of compound and constantly measured the calcium level for an additional 6 min. To correct for variations in dye loading or cell numbers, we normalized the calcium level at 1 min prior to adding the inhibitors and selected the calcium level value at the final 1 min to calculate the inhibition rate of

the compounds. A concentration of 10 $\mu\text{mol/L}$ YM58483 was used as the positive control, and an equal amount of dimethylsulfoxide (DMSO) was the negative control.

Tetracycline was added to induce the expression of MSS (monomer ORAI1 covalently linked with two $S_{336-485}$ domains, abbreviated as MSS)^[25] and the ORAI1 V102A mutant. The customized medium was used (no calcium) to decrease the toxicity effect of high calcium caused by the constitutively open MSS and V102A channel.

For the Ca^{2+} influx assay with the MSS and V102A mutants, after loading the cells with Fluo-4/AM, the cells were incubated in standard extracellular Ringer's solution with 2 mmol/L Ca^{2+} for approximately 10 min. When the calcium level was stable, the cells were treated with 10 $\mu\text{mol/L}$ YM58483 as a positive control, an equal amount of DMSO as a negative control, and different doses of compound **1** to test its inhibitory effect. The inhibition rate of 10 $\mu\text{mol/L}$ YM58483 was set to 100% and the inhibition rate of an equal amount of DMSO was 0 to normalize and calculate the inhibition rate of compound **1**. In the Ca^{2+} influx assay with O1S1 and O2S1 cells, before treating the cells with compounds, 1 $\mu\text{mol/L}$ TG was added to stimulate the opening of the CRAC channel.

Electrophysiology

Electrophysiology and patch clamp experiments were performed at room temperature using the standard whole cell recording configuration^[25]. Cells were plated on poly-L-lysine-coated coverslips 12–24 h prior to the experiments. The extracellular solution contained 120 mmol/L NaCl, 10 mmol/L CaCl_2 , 2 mmol/L MgCl_2 , 10 mmol/L tetraethylammonium chloride and 10 mmol/L Hepes (pH 7.4 adjusted with NaOH). For recording the constitutive I_{CRAC} , the pipette was filled with a solution containing 110 mmol/L cesium glutamate, 6 mmol/L MgCl_2 , 10 mmol/L BAPTA, and 10 mmol/L Hepes (pH 7.2 adjusted with CsOH). The GFP fluorescence of each cell was measured before patch clamp recording. After establishing the whole-cell configuration, voltage stimuli consisting of a 10-ms step to -100 mV followed by a 50-ms voltage ramp from -100 to +100 mV were delivered from the holding potential of 0 mV every 2 s. The currents were digitized at a rate of 20 kHz and filtered offline at 2 kHz. All current traces were leak-subtracted. After seal formation but before break-in, the I - V currents were collected by delivering the voltage ramps, and those with a current magnitude at +50 mV equal to the sustained outward current after break-in were assigned as the leak current. Capacitive currents were determined and corrected before each voltage ramp. The current amplitude at -80 mV of the individual ramp was extracted to monitor the development of I_{CRAC} , and current amplitudes at -80 mV were used for statistical analysis. Data were analyzed using the Igor Pro 5.01 (Wavemetrics). The averaged results are presented as the mean value \pm SEM, with the number of experiments indicated.

Cytotoxicity assay

A Cell Counting Kit-8 (CCK-8) assay (Dojindo Laboratories,

Kumamoto, Japan) was used to measure the cytotoxicity of compounds on Jurkat cells. Jurkat cells (2×10^4 cells/well) were seeded into 96-round-bottom-well plates and treated with 10 or 30 $\mu\text{mol/L}$ compound or the corresponding amount of DMSO as a negative control for 48 h. After the cells were washed with PBS once, 10% (*v/v*) CCK-8 solution was added to each well, followed by incubation for 4 h at 37°C. The absorbance at 450 nm was determined using an ELISA (enzyme-linked immunosorbent assay) reader (Wallac 1420 Victor2 Microplate Reader, Perkin Elmer).

Immune inhibition assay

Jurkat cells were nucleo-transfected with ORAI1-SS-eGFP plasmids^[25] and cultured overnight with customized calcium free RPMI-1640 media. Then, the cells were washed, resuspended with complete RPMI-1640 media, and seeded (2×10^4 cells/well) into 96-round-bottom-well plates. A concentration of 10 $\mu\text{mol/L}$ compound, 10 $\mu\text{mol/L}$ YM58483 (positive control), or the corresponding amount of DMSO (negative control) was added to the wells. The Jurkat cells that express ORAI1-SS-eGFP produce IL-2 because of the constitutively opened CRAC channels. After 24 h, the amount of IL-2 in the cell supernatant was determined using the human IL-2 ELISA kit (human IL-2 duoset, R&D).

Results

The mechanistic studies of compound **1**

Compound **1** was evaluated to determine the inhibitory mechanism on the CRAC channel (Figure 3). As shown in Figure 3A and 3B, 10 $\mu\text{mol/L}$ of compound **1** effectively decreased the high intracellular calcium level induced by the TG-opened CRAC channels in the ORAI1 and STIM1 stably co-expressed HEK293 cells. To analyze the target protein and inhibitory effect of compound **1**, we tested it in constitutively opened CRAC channels that were formed by ORAI1-SS (monomer ORAI1 covalently linked with two $S_{336-485}$ domains, MSS)^[25] and the ORAI1 mutant, V102A^[26]. In MSS cells, the Ca^{2+} influx data showed that 30 $\mu\text{mol/L}$ of compound **1** maximally inhibited 78% of the calcium level mediated by the MSS construct and that the calculated IC_{50} was approximately 0.2 $\mu\text{mol/L}$. Patch clamp data confirmed that 10 $\mu\text{mol/L}$ of compound **1** inhibited 54% of the total MSS current. Although the inhibitory effect of compound **1** on the MSS channels was partial, this result indicated that the possible target site of compound **1** was located on ORAI1, the S (336–485) domain, or both, instead of other regions, except 336–485, on STIM1. The ORAI1 mutant, V102A, produces no Ca^{2+} selective, constitutively opened CRAC channels, even in the absence of STIM1^[26]. The inhibitory effect of compound **1** on these STIM1-free V102A mutant channels is shown in Figure 3C and indicates that 10 $\mu\text{mol/L}$ of compound **1** completely, inhibits the calcium level and the current mediated by the opened V102A channel, which further demonstrates that the target protein of compound **1** is ORAI1.

Human ORAI protein has three homologs, ORAI1, ORAI2, and ORAI3. When these proteins are co-expressed together

with STIM1 in HEK293 cells, ORAI1 or ORAI2 generates substantial CRAC current, but ORAI3 fails to produce any detectable Ca^{2+} selective currents^[27]. To determine whether compound **1** specifically targets ORAI1 but not other ORAI proteins, we used an ORAI1 and STIM1 stably expressed cell line (O1S1) and an ORAI2 and STIM1 stably expressed cell line (O2S1) to test the inhibitory effect of compound **1**. As shown in Figure 3D and 3E, compound **1** partially inhibits O1S1 channels. The Ca^{2+} influx data indicate that 30 $\mu\text{mol/L}$ of compound **1** reaches the maximum inhibition rate of 66.98% for

the O1S1 channel and that the calculated IC_{50} is 0.38 $\mu\text{mol/L}$. Patch clamp data confirm that 10 $\mu\text{mol/L}$ of compound **1** inhibits 47.00% of the O1S1 current. However, both the Ca^{2+} influx assay and electrophysiological experiments showed that compound **1** did not inhibit the O2S1 channel. Therefore, these results indicate that compound **1** inhibits the CRAC channel by specifically targeting the ORAI1 protein (Figure 3).

Structure and activity relationship of compound **1** derivatives

The specificity of compound **1** led us to further explore this

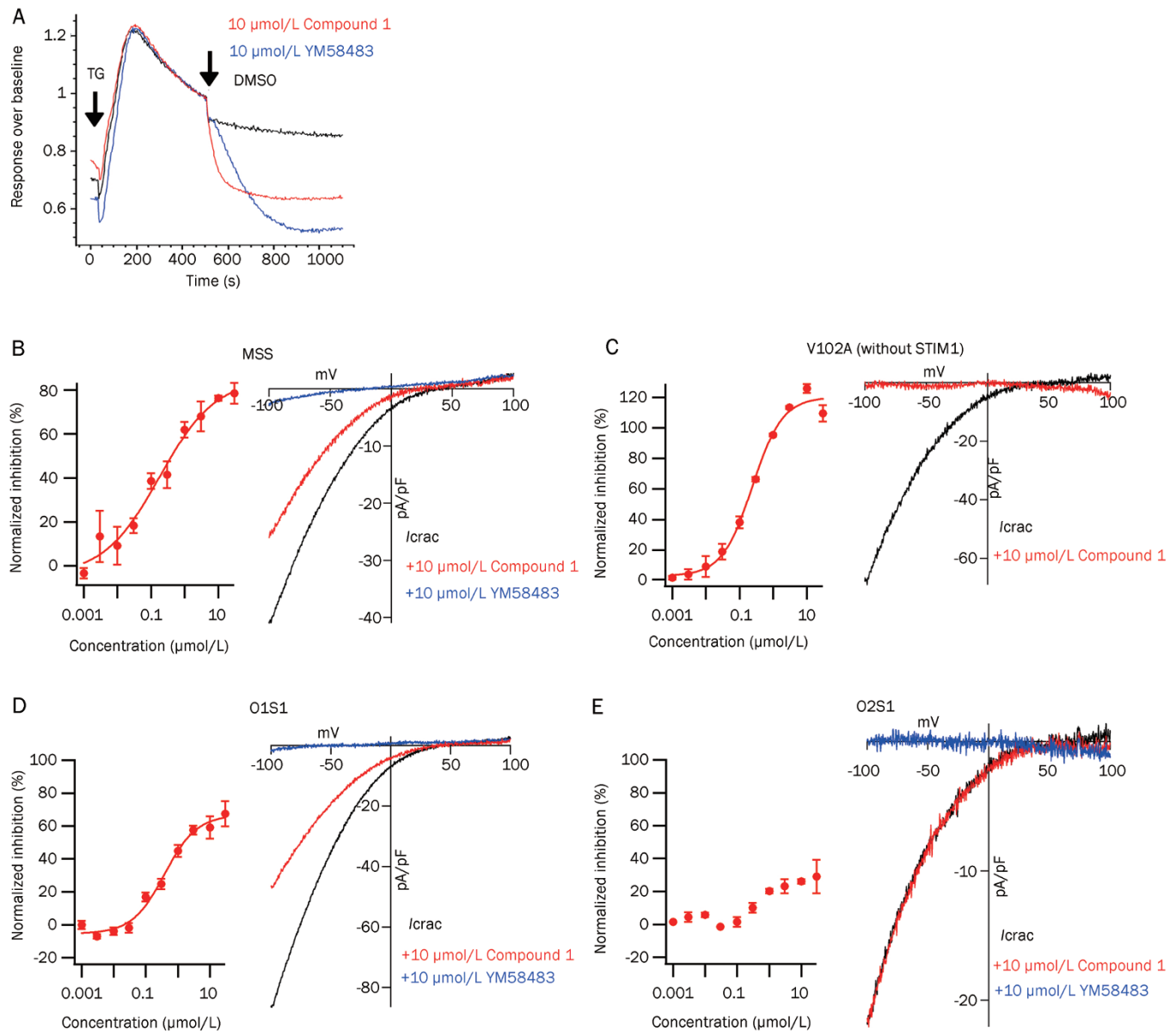


Figure 3. Compound **1** inhibits the CRAC channel by specifically targeting the ORAI1 protein. (A) Ca^{2+} influx data indicate that Compound **1** decreases the calcium level in the O1S1 opened CRAC channel. (B) Compound **1** partially inhibits the constitutively opened MSS CRAC channel. (C) Compound **1** completely inhibits the constitutively opened V102A CRAC channel. (D) Compound **1** partially inhibits the O1S1 CRAC channel. (E) Compound **1** does not inhibit the O2S1 CRAC channel. CRAC current was recorded, and the data were processed into the leak-subtracted current-voltage relationship at -100 mV. The black, red and blue lines represent the current trace in untreated cells (MSS, $n=10$; V102A, $n=6$; O1S1, $n=7$; O2S1, $n=7$), the current trace in cells treated with 10 $\mu\text{mol/L}$ of compound **1** (MSS, $n=10$; V102A, $n=6$; O1S1, $n=9$; O2S1, $n=7$), and the current trace in cells treated with 10 $\mu\text{mol/L}$ of YM58483 (MSS, $n=7$; O1S1, $n=7$; O2S1, $n=7$), respectively.

class of compounds. We first examined the effect of substitutions at the α -position in the benzyl group of compound **1** on the CRAC channel inhibitory activity, cytotoxicity and IL-2 production (Table 1). Un-substituted compound **2a** and methyl substituted compound **2b** did not exhibit CRAC channel inhibition at a 10 $\mu\text{mol/L}$ concentration, whereas longer side-chain compounds, such as *n*-propyl **2c** and *n*-butyl **2d**, showed better inhibition of 74.09% and 48.86%, respectively; however, the cytotoxicity of these two compounds was increased significantly compared with compound **1**. These results indicate that the length of the side-chain has a large effect on the inhibitory activity and cytotoxicity and that the β -ethyl phenyl subunit may be the best choice to balance potency and cytotoxicity.

Notably, compound **2f**, the *R*-enantiomer of compound **1** (IC_{50} of **1** is 3.25 $\mu\text{mol/L}$), showed weaker inhibition (IC_{50} of **2f** is 7.60 $\mu\text{mol/L}$) compared with the *S*-enantiomer compound, **2e** (IC_{50} of **2e** is 0.75 $\mu\text{mol/L}$). In addition, the (*S*)-ethylene compound, **2g** (37.09% inhibition at 10 $\mu\text{mol/L}$), and the (*S*)-ethynyl compound, **2h** (16.33% inhibition at 10 $\mu\text{mol/L}$), reduced the inhibitory effect on the CRAC channel compared with the alkyl compound **1**. From these results, we propose that the ability to inhibit the CRAC channel is sensitive to the size of the α -position substitutions on the left-side benzyl group. Small alkyl groups at the α -position on the left-side benzyl group were favorable for inhibiting the CRAC channel, and bulky groups may interfere with interactions between the target and molecules (Table 1).

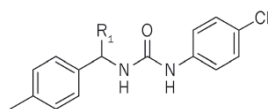
Then, we examined the effects of substitutions at the 4-position in the left-side phenyl group of compound **1** on the CRAC channel inhibitory activity, cytotoxicity and IL-2 production (Table 2). We found that hydrogen (**3a**) reduced

the inhibitory effects on the CRAC channel. Furthermore, the compounds substituted with cyano (**3e**), methoxycarbonyl (**3f**), trifluoro (**3g**), chloro (**3h**) and fluoro (**3k**) groups did not change the potency of inhibiting the Ca^{2+} influx, whereas the cytotoxicity was increased compared with compound **1**. The compounds substituted with hydroxyl (**3b**), methoxyl (**3c**) and benzyloxy (**3d**) groups increased the inhibitory effects of Ca^{2+} efflux but showed much higher cytotoxicity.

We also investigated the effects of various replacements of the left-side phenyl group of compound **1** by substituting phenyl, hetero aromatic and aliphatic groups and found that compounds with hetero aromatic groups, such as 2-thiophenyl (**3j**), showed comparable inhibitory effects on the CRAC channel, whereas compounds with aliphatic replacements (**3k** and **3l**) completely lost the inhibitory activity. These results demonstrate that left-side aromatic groups are essential features of CRAC channel inhibitors (Table 2).

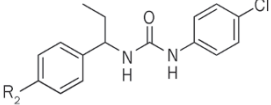
Because the majority of the compounds in Table 2 have high cytotoxicity, the focus was changed to the right-side phenyl ring subunit of compound **1** to obtain improved potency with low cytotoxicity. Compounds (**4a–4j**) were synthesized and tested (Table 3). The activities of these compounds varied greatly. In the series of compounds possessing chloro groups (**4a**, **4b**, and **4c**), the 3-chloro group (**4c**) reduced the inhibitory activity to 11.14% at 10 $\mu\text{mol/L}$. The 2-chloro group (**4b**) reduced the inhibitory activity to 26.90% at 10 $\mu\text{mol/L}$, and the 4-chloro derivative **1** showed 47.13% inhibition at 10 $\mu\text{mol/L}$. The inhibitory effects on the CRAC channel of the compound with a 4-position chloride (**1**) is greater than fluoride (**4c**) and bromide (**4d**). Compounds with electron-withdrawing groups (**4e** and **4f**) exhibited better inhibitory activity, whereas compounds with electron-donating groups (**4g**, **4h**, and **4j**) showed

Table 1. Inhibitory activity for CRAC channel of compounds **2a–2h**.



| Compound | R_1 | Inhibition of Ca^{2+} influx (10 $\mu\text{mol/L}$) | Cytotoxicity (%) | | IL-2 production (10 $\mu\text{mol/L}$) |
|-----------|-----------------------|--|-------------------------|-------------------------|--|
| | | | (10 $\mu\text{mol/L}$) | (30 $\mu\text{mol/L}$) | |
| 1 | Et | $\text{IC}_{50}=3.25\pm 0.17^a$ $I_{\max}=82.50\%^c$ | 9.49 | 51.17 | 85.82% |
| 2a | H | 0.92% | NT ^b | NT ^b | NT ^b |
| 2b | Me | 7.05% | NT ^b | NT ^b | NT ^b |
| 2c | <i>n</i> Pr | 74.09% | 47.65 | 94.82 | 96.35% |
| 2d | <i>n</i> Bu | 48.86% | 48.41 | 59.17 | 96.39% |
| 2e | (<i>S</i>)-Et | $\text{IC}_{50}=0.75\pm 0.02^a$ $I_{\max}=77.71\%^c$ | 19.83 | 46.99 | 87.57% |
| 2f | (<i>R</i>)-Et | $\text{IC}_{50}=7.60\pm 0.24^a$ $I_{\max}=67.99\%^c$ | 22.41 | 54.22 | 82.23% |
| 2g | (<i>S</i>)-Ethylene | 37.09% | NT ^b | NT ^b | NT ^b |
| 2h | (<i>S</i>)-Ethynyl | 16.33% | NT ^b | NT ^b | NT ^b |

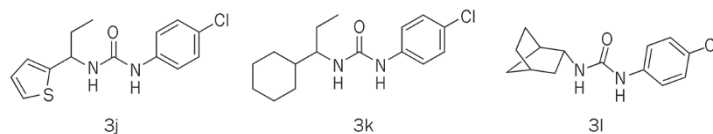
^a IC_{50} value for Ca^{2+} influx ($\mu\text{mol/L}$). IC_{50} values were estimated by inhibition at eight concentrations. Assays were performed in triplicate, and data represent similar results. ^b Not tested. ^c I_{\max} value stands for maximum inhibition of Ca^{2+} influx.

Table 2. Inhibitory activity for CRAC channel of compounds **3a–3l**.


| Compound | R ₂ | Inhibition of Ca ²⁺ influx (10 μmol/L) | Cytotoxicity (%) | | IL-2 production (10 μmol/L) |
|-----------------------|-------------------|--|------------------|-----------------|--------------------------------|
| | | | (10 μmol/L) | (30 μmol/L) | |
| 1 | 4-Me | IC ₅₀ =3.25±0.17 ^a <i>I</i> _{max} =82.50% ^c | 9.49 | 51.17 | 85.82% |
| 3a | 4-H | 19.83% | NT ^b | NT ^b | NT ^b |
| 3b | 4-OH | 70.05% | 40.76 | 37.48 | 85.09% |
| 3c | 4-OMe | IC ₅₀ =4.52±0.07 ^a <i>I</i> _{max} =95.24% ^c | 32.40 | 56.22 | 87.18% |
| 3d | 4-OBn | 63.08% | 65.50 | 58.16 | 73.46% |
| 3e | 4-CN | 34.50% | 55.07 | 76.54 | 68.06% |
| 3f | 4-COOMe | 38.22% | 75.14 | 79.63 | 72.72% |
| 3g | 4-CF ₃ | 29.85% | 60.92 | 100.00 | 76.73% |
| 3h | 4-Cl | 45.59% | 41.41 | 90.89 | 87.92% |
| 3i | 2,4-Di-F | 37.42% | 39.91 | 80.75 | 76.45% |
| 3j^e | | 44.07% | NT ^b | NT ^b | NT ^b |
| 3k^e | | NA ^d | NT ^b | NT ^b | NT ^b |
| 3l^e | | NA ^d | NT ^b | NT ^b | NT ^b |

^a IC₅₀ value for Ca²⁺ influx (μmol/L). IC₅₀ values were estimated by inhibition at eight concentrations. Assays were performed in triplicate, and data represent similar results. ^b Not tested. ^c *I*_{max} value stands for maximum inhibition of Ca²⁺ influx. ^d Not available.

^e



decreased inhibitory activity. By contrast, removal of the chloro group (**4i**) significantly decreased the inhibitory activity (Table 3).

Because modification on the phenyl ring makes it difficult to balance activity and cytotoxicity, we focused on the effect of N-H on the inhibitory activity. We found that *N'* single-methylated compounds **5a** (36.30%), **5c** (32.52%) and *N,N'*-dimethylated compounds **5b** (44.30%), **5d** (48.35%) exhibited considerable activity compared with compound **1** (47.13%). However, because the introduction of larger moieties (**5e**, **5f**) or a cyclized nitrogen with an ortho-substitution (**5g**, **5h**, **5i**, and **5j**) can lead to reduced inhibitory activity on the CRAC channel, it is possible that cyclization with nitrogen and a left-side phenyl ortho-substitution influences the torsional angle between the left-side phenyl ethylamine and the right-side phenyl ring. This finding indicates that free N-H is not necessary to maintain the high potency of the inhibitory activity and thus provides a suitable point for further modification to improve the activity (Table 4).

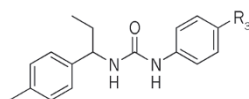
Interestingly, we discovered that the majority of N-substituted compounds showed relatively low cytotoxicity while retaining their potency to inhibit IL-2 production. For example, the cytotoxicity of compound **5b** is less than 30% at 30 μmol/L, but it inhibits IL-2 production by 86% at 10 μmol/L. This

compound has improved Ca²⁺ influx inhibition, immune inhibition and low cytotoxicity and may be a lead in the further development of small molecule inhibitors of the CRAC channel.

Discussion

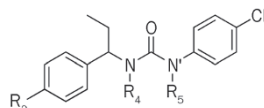
Recently, several human diseases have been linked to abnormal CRAC channel activities; therefore, interest in this area is growing rapidly, but most of the present chemotypes of small-molecule CRAC channel inhibitors are similar. Thus, it is necessary to diversify the chemical classes that inhibit CRAC channels.

Moreover, previous data indicate that a STIM1 mutation is associated with a syndrome of immunodeficiency and autoimmunity but that a ORAI1 mutation only causes a major clinical syndrome of immunodeficiency. Therefore, molecules that specifically block ORAI1 may have fewer side effects than do molecules that target STIM1; however, the majority of the small molecules used previously were unselective. For example, they blocked the transient receptor potential channel (TRP) C and TRP M channels with a similar potency as CRAC channels. The only specific CRAC channel inhibitor tested in human is CM2489, the structure of which has not yet been disclosed. Therefore, the issue of selectivity has been a cen-

Table 3. Inhibitory activity for CRAC channel of compounds **4a–4j**.

| Compound | R ₃ | Inhibition of Ca ²⁺ influx (10 μmol/L) | Cytotoxicity (%) | | IL-2 production (10 μmol/L) |
|-----------|-------------------|--|------------------|-----------------|--------------------------------|
| | | | (10 μmol/L) | (30 μmol/L) | |
| 1 | 4-Cl | IC ₅₀ =3.25±0.17 ^a <i>I</i> _{max} =82.50% ^c | 9.49 | 51.17 | 85.82% |
| 4a | 2-Cl | 26.90% | 3.25 | 34.04 | 67.66% |
| 4b | 3-Cl | 11.14% | 31.18 | 73.80 | 98.26% |
| 4c | 4-F | IC ₅₀ =1.62±0.11 ^a <i>I</i> _{max} =71.43% ^c | 15.60 | 15.01 | 75.54% |
| 4d | 4-Br | 21.10% | NT ^b | NT ^b | NT ^b |
| 4e | 4-NO ₂ | IC ₅₀ =6.95±0.27 ^a <i>I</i> _{max} =58.97% ^c | 13.47 | 68.30 | 75.85% |
| 4f | 4-COOEt | 42.86% | 10.91 | 9.45 | 84.18% |
| 4g | 4-OMe | 19.80% | 21.46 | 15.36 | 24.16% |
| 4h | 4-Me | 31.69% | 26.11 | 31.61 | 80.79% |
| 4i | H | 0.26% | 27.82 | 24.28 | 29.66% |
| 4j | 4-cyclopropyl | 11.18% | NT ^b | NT ^b | NT ^b |

^a IC₅₀ value for Ca²⁺ influx (μmol/L). IC₅₀ values were estimated by inhibition at eight concentrations. Assays were performed in triplicate, and data represent similar results. ^b Not tested. ^c *I*_{max} value stands for maximum inhibition of Ca²⁺ influx.

Table 4. Inhibitory activity for CRAC channel of compounds **5a–5j**.

| Compound | R ₂ | R ₄ | R ₅ | Inhibition of Ca ²⁺ influx (10 μmol/L) | Cytotoxicity (%) | | IL-2 production (10 μmol/L) |
|-----------|----------------|---------------------------------|----------------|---|------------------|-----------------|--------------------------------|
| | | | | | (10 μmol/L) | (30 μmol/L) | |
| 1 | Me | H | H | IC ₅₀ =3.25±0.17 ^a <i>I</i> _{max} =82.50% ^c | 9.49 | 51.17 | 85.82% |
| 5a | Me | H | Me | IC ₅₀ =2.13±0.00 ^a <i>I</i> _{max} =65.20% ^c | 2.83 | 10.85 | 61.67% |
| 5b | Me | Me | Me | IC ₅₀ =11.95±0.83 ^a <i>I</i> _{max} =95.23% ^c | 6.25 | 28.02 | 86.76% |
| 5c | OMe | H | Me | 1.46% | -2.13 | 8.86 | 52.86% |
| 5d | OMe | Me | Me | IC ₅₀ =6.50±0.31 ^a <i>I</i> _{max} =91.74% ^c | 5.88 | 29.13 | 87.38% |
| 5e | OMe | H | Allyl | 4.26% | -1.93 | -6.54 | 47.25% |
| 5f | OMe | (CH ₂) ₄ | 13.87 | NT ^b | NT ^b | NT ^b | |
| 5g | | | H | 15.08% | 3.40 | 35.88 | 75.77% |
| 5h | | | Me | 7.48% | -0.51 | 21.92 | 31.57% |
| 5i | | | H | 6.23% | 1.37 | 12.87 | 28.64% |
| 5j | | | Me | 22.07% | 17.34 | 19.49 | 77.19% |

^a IC₅₀ value for Ca²⁺ influx (μmol/L). IC₅₀ values were estimated by inhibition at eight concentrations. Assays were performed in triplicate, and data represent similar results. ^b Not tested. ^c *I*_{max} value stands for maximum inhibition of Ca²⁺ influx.

tral theme in CRAC channel inhibition, and the discovery of molecules that specifically block ORAI1 will be the focus and

priority for future CRAC channel research.

In this study, we designed and synthesized a series of novel 1-phenyl-3-(1-phenylethyl)urea derivatives and evaluated their inhibition of Ca^{2+} influx through CRAC channels. Of these CRAC channel inhibitors, several showed an improved inhibition of IL-2 production in the Jurkat cell line with low cytotoxicity. Mechanistic studies of inhibition indicated that compound **1** inhibits CRAC channels by specifically targeting the ORAI1 protein, which makes these compounds advantageous for further development compared with other non-specific compounds that target both the ORAI1 and STIM1 proteins of the CRAC channel.

Additional mechanistic studies and biological evaluations are currently ongoing. The discovery of this novel, potent and ORAI1-specific chemotype will provide a new strategy for the further design and development of CRAC channel inhibitors.

Acknowledgements

This work was supported by grants from the National Science and Technology Major Projects for Major New Drugs Innovation and Development (2012ZX09304011 and 2013ZX09507002), Chinese Academy of Science for Technological Innovation and Cross-Team Collaboration, the State Key Laboratory of Drug Research, National Key laboratory of Biomacromolecules and the National Natural Science Foundation of China (81102456 and 81373422).

Author contribution

Fa-jun NAN and Tao XU designed the research; Hai-zhen ZHANG, Xiao-lan XU, Hua-yan CHEN, Sher ALI, Dan WANG and Jun-wei YU performed the research; all authors analyzed data; Hai-zhen ZHANG and Xiao-lan XU wrote the manuscript.

Supplementary information

Synthesis and datafiles of all compounds is available at Acta Pharmacologica Sinica's website.

References

- Hoth M, Penner R. Depletion of intracellular calcium stores activates a calcium current in mast cells. *Nature* 1992; 355: 353–6.
- Zweifach A, Lewis RS. Rapid inactivation of depletion-activated calcium current (I_{CRAC}) due to local calcium feedback. *J Gen Physiol* 1995; 105: 209–26.
- Hogan PG, Lewis RS, Rao A. Molecular basis of calcium signaling in lymphocytes: STIM and ORAI. *Annu Rev Immunol* 2010; 28: 491–533.
- Hoth M. Calcium and barium permeation through calcium release-activated calcium (CRAC) channels. *Pflugers Arch* 1995; 430: 315–22.
- Zweifach A, Lewis RS. Mitogen-regulated Ca^{2+} current of T lymphocytes is activated by depletion of intracellular Ca^{2+} stores. *Proc Natl Acad Sci U S A* 1993; 90: 6295–9.
- Feske S. Immunodeficiency due to defects in store-operated calcium entry. *Ann N Y Acad Sci* 2011; 1238: 74–90.
- Di Capite JL, Bates GJ, Parekh AB. Mast cell CRAC channel as a novel therapeutic target in allergy. *Curr Opin Allergy Clin Immunol* 2011; 11: 33–8.
- Chang WC. Store-operated calcium channels and pro-inflammatory signals. *Acta Pharmacol Sin* 2006; 27: 813–20.
- Di Sabatino A, Rovedatti L, Kaur R, Spencer JP, Brown JT, Morisset VD, *et al*. Targeting gut T cell Ca^{2+} release-activated Ca^{2+} channels inhibits T cell cytokine production and T-box transcription factor T-bet in inflammatory bowel disease. *J Immunol* 2009; 183: 3454–62.
- Varga-Szabo D, Braun A, Kleinschnitz C, Bender M, Pleines I, Pham M, *et al*. The calcium sensor STIM1 is an essential mediator of arterial thrombosis and ischemic brain infarction. *J Exp Med* 2008; 205: 1583–91.
- Prevarskaya N, Skryma R, Shuba Y. Calcium in tumour metastasis: new roles for known actors. *Nat Rev Cancer* 2011; 11: 609–18.
- Ritchie MF, Yue C, Zhou Y, Houghton PJ, Soboloff J. Wilms tumor suppressor 1 (WT1) and early growth response 1 (EGR1) are regulators of STIM1 expression. *J Biol Chem* 2010; 285: 10591–6.
- Yang S, Zhang JJ, Huang XY. Orai1 and STIM1 are critical for breast tumor cell migration and metastasis. *Cancer Cell* 2009; 15: 124–34.
- Kuo HC, Chang WC. Genetic polymorphisms in Kawasaki disease. *Acta Pharmacol Sin* 2011; 32: 1193–8.
- Chung SC, McDonald TV, Gardner P. Inhibition by SK&F 96365 of Ca^{2+} current, IL-2 production and activation in T lymphocytes. *Br J Pharmacol* 1994; 113: 861–8.
- Franzius D, Hoth M, Penner R. Non-specific effects of calcium entry antagonists in mast cells. *Pflugers Arch* 1994; 428: 433–8.
- Maruyama T, Kanaji T, Nakade S, Kanno T, Mikoshiba K. 2-APB, 2-aminoethoxydiphenyl borate, a membrane-penetrable modulator of $\text{Ins}(1,4,5)\text{P}_3$ -induced Ca^{2+} release. *J Biochem* 1997; 122: 498–505.
- Prakriya M, Lewis RS. Potentiation and inhibition of Ca^{2+} release-activated Ca^{2+} channels by 2-aminoethoxydiphenyl borate (2-APB) occurs independently of IP_3 receptors. *J Physiol* 2001; 536: 3–19.
- Ishikawa J, Ohga K, Yoshino T, Takezawa R, Ichikawa A, Kubota H, *et al*. A pyrazole derivative, YM-58483, potently inhibits store-operated sustained Ca^{2+} influx and IL-2 production in T lymphocytes. *J Immunol* 2003; 170: 4441–9.
- Zitt C, Strauss B, Schwarz EC, Spaeth N, Rast G, Hatzelmann A, *et al*. Potent inhibition of Ca^{2+} release-activated Ca^{2+} channels and T-lymphocyte activation by the pyrazole derivative BTP2. *J Biol Chem* 2004; 279: 12427–37.
- Ng SW, di Capite J, Singaravelu K, Parekh AB. Sustained activation of the tyrosine kinase Syk by antigen in mast cells requires local Ca^{2+} influx through Ca^{2+} release-activated Ca^{2+} channels. *J Biol Chem* 2008; 283: 31348–55.
- Pevarello P, Cainarca S, Liberati C, Tarroni P, Piscitelli F, Severi E. Ca^{2+} -release-activated Ca^{2+} channel inhibitors. *Pharm Pat Anal* 2014; 3: 171–82.
- Wang Y, Deng X, Mancarella S, Hendron E, Eguchi S, Soboloff J, *et al*. The calcium store sensor, STIM1, reciprocally controls Orai and $\text{CaV}1.2$ channels. *Science* 2010; 330: 105–9.
- Picard C, McCarl CA, Papolos A, Khalil S, Lüthy K, Hivroz C, *et al*. STIM1 mutation associated with a syndrome of immunodeficiency and autoimmunity. *N Engl J Med* 2009; 360: 1971–80.
- Li Z, Liu L, Deng Y, Ji W, Du W, Xu P, *et al*. Graded activation of CRAC channel by binding of different numbers of STIM1 to Orai1 subunits. *Cell Res* 2011; 21: 305–15.
- McNally BA, Somasundaram A, Yamashita M, Prakriya M. Gated regulation of CRAC channel ion selectivity by STIM1. *Nature* 2012; 482: 241–5.
- DeHaven WI, Smyth JT, Boyles RR, Putney JW Jr. Calcium inhibition and calcium potentiation of Orai1, Orai2, and Orai3 calcium release-activated calcium channels. *J Biol Chem* 2007; 282: 17548–56.