

Original Article

# Lactoferrin inhibits apoptosis through insulin-like growth factor I in primary rat osteoblasts

Jian-ming HOU<sup>1,2,#,\*</sup>, En-yu CHEN<sup>#,2</sup>, Shi-chao WEI<sup>1,2,#</sup>, Fan LIN<sup>1,2,#</sup>, Qing-ming LIN<sup>1,2</sup>, Xu-hua LAN<sup>1,2</sup>, Ying XUE<sup>1,2</sup>, Man WU<sup>2</sup>

<sup>1</sup>Fujian Provincial Hospital, Fuzhou 350001, China; <sup>2</sup>Provincial Clinical Medical College of Fujian Medical University, Fuzhou 350004, China

**Aim:** Excessive apoptosis of osteoblasts is the major cause of low bone mass, and bovine lactoferrin (bLF), an iron-binding glycoprotein, might protect osteoblastic cells from apoptosis induced by serum withdrawal. The aim of this study was to elucidate the mechanisms underlying the anti-apoptotic action of bLF in rat osteoblasts *in vitro*.

**Methods:** Primary rat osteoblasts were incubated in the presence of varying concentrations of bLF for 24 h. The expression of insulin-like growth factor I (IGF-I) and IGF-I receptor (IGF-IR) was measured using RT-PCR and Western blotting. Cell apoptosis was examined with flow cytometry. siRNAs targeting IGF-I was used in this study.

**Results:** Treatment of bLF (0.1–1000 µg/mL) dose-dependently increased the expression of IGF-I and IGF-IR in the osteoblasts. Treatment with bLF (10, 100 µg/mL) markedly inhibited the osteoblast apoptosis (with the rate of total apoptosis of 70% at 10 µg/mL), but the high concentration of bLF (1000 µg/mL) significantly promoted the osteoblast apoptosis. Knockdown of the IGF-I gene in osteoblasts with siRNA markedly increased the osteoblast apoptosis.

**Conclusion:** Lactoferrin (10 and 100 µg/mL) effectively inhibits apoptosis of primary rat osteoblasts by upregulating IGF-I expression.

**Keywords:** lactoferrin; osteoblast; IGF-I; apoptosis; RNA interference; bone remodeling; osteoporosis

Acta Pharmacologica Sinica (2014) 35: 523–530; doi: 10.1038/aps.2013.173; published online 24 Feb 2014

## Introduction

Bovine lactoferrin (bLF) is an iron-binding glycoprotein that belongs to the transferrin family and is produced by epithelial cells of the exocrine glands<sup>[1,2]</sup>. bLF can stimulate the proliferation and differentiation of bone-forming osteoblasts and act as a survival factor for these cells<sup>[3]</sup>. bLF has been demonstrated to have potent anti-apoptotic effects on osteoblasts that may also contribute to the anabolic skeletal actions of these cells<sup>[4,5]</sup>.

A healthy skeleton is maintained by the continuous renewal of bone marrow. Bone remodeling depends on the actions of two main bone cells: osteoclasts and osteoblasts. Osteoclasts resorb old bone while osteoblasts form new bone by first laying down an unmineralized matrix and then orchestrating its mineralization<sup>[6]</sup>. The excessive apoptosis of osteoblasts is the major cause of low bone mass. In addition, bLF might protect osteoblastic cells from apoptosis induced by serum withdrawal<sup>[4]</sup>. Understanding the molecular mechanisms

regulating osteoblast survival may help us to develop effective therapeutics for the treatment of low bone mass in patients afflicted with diseases such as osteoporosis, primary hyperparathyroidism and systemic sclerosis.

Our previous study found that bLF at 1 and 2 mg·kg<sup>-1</sup>·d<sup>-1</sup> significantly increased the bone mass and improved bone microarchitecture in ovariectomized rats suffering from increased bone loss, severe osteopenia and increased bone resorption<sup>[7]</sup>. Previous studies have shown anabolic effects of bLF on osteoblasts and osteoclasts *in vitro*<sup>[4,8,9]</sup>. Grey found that bLF inhibited 50%–70% of apoptosis in osteoblasts, but he also discovered that this inhibition did not involve the PI3 kinase or p42/44 MAP kinase signaling pathways<sup>[4]</sup>. So the exact mechanisms for the effect of bLF on osteoblasts are largely unknown, the aim of this study was to explore the mechanisms of action of bLF on apoptosis of primary rat osteoblasts by studying the insulin-like growth factor (IGF) signaling pathway.

## Materials and methods

### Reagents

Bovine lactoferrin was obtained from Fonterra (Auckland,

# These authors contributed equally to this work.

\* To whom correspondence should be addressed.

E-mail: hjm996@126.com

Received 2013-08-01 Accepted 2013-11-05

New Zealand). Fetal bovine serum (FBS), L-glutamine, penicillin/streptomycin and D-minimal essential medium (DMEM) were obtained from Gibco-BRL (Grand Island, NY, USA). Trypsin was purchased from Hyclone (Auckland, New Zealand). The Annexin-V/PI Apoptosis kit was purchased from Sigma (America). The Reverse Transcription System kit and real-time PCR kit were purchased from Takara (Japan). The alkaline phosphatase staining kit was purchased from JianCheng Biotech Companies (China). The SABC immunohistochemistry kit was purchased from Wuhan Boster Companies (China). The Type-I Collagen Enzyme and TRIZOL were purchased from Invitrogen (Carlsbad, CA, USA). The monoclonal IGF-I antibody and the monoclonal IGF-IR antibody used for Western blot analyses were purchased from Abcam (Cambridge, UK).

#### Cell culture

Primary osteoblasts were isolated from the calvaria of newborn (<24 h) Sprague Dawley rats. Briefly, neonatal rat calvariae were dissected from adherent soft tissue and washed in a PBS solution (2 mL). The tissue was shredded into 1 mm×1 mm×1 mm pieces using ophthalmic scissors and then sequentially digested with 3 mL trypsin (15 min) followed by 4 mL collagenase mixed with 1 mL trypsin (60 min) to release the cells. The cell preparations were washed and cultured in D-minimum essential medium (DMEM) containing 10% FBS and antibiotics. Cells were plated in 25-cm<sup>2</sup> flasks and cultured overnight in an incubator with a CO<sub>2</sub> level of 5% at 37°C. The medium was changed every other day. Cells in the third passage were used for all experiments.

#### Identification of primary cultured rat osteoblasts

##### Cell morphology

Osteoblast morphology was examined using an inverted microscope.

##### Alkaline phosphatase staining

Third passage cells were trypsinized and seeded onto chamber slides. Alkaline phosphatase staining was performed according to the manufacturer's protocol: the cells were stained with hematoxylin for 3 min, washed in water, and then examined by microscopy.

##### SABC Immunohistochemistry

SABC immunostaining was performed according to the manu-

facturer's protocol with a reaction time between 5 and 30 min. The samples were washed in water and examined by microscopy.

#### Annexin V-FITC and propidium iodide double-stained flow cytometry

After treatment with different concentrations of bLF (0, 0.1, 1, 10, 100, and 1000 µg/mL) for 24 h, cells were detached and rinsed with PBS to prevent aggregation. Cells were collected and stained using the Annexin V-FITC Apoptosis Detection Kit at room temperature in the dark for 10 min and then filtered before analysis. Cells (1×10<sup>6</sup>) were analyzed by flow cytometry to detect and quantify cells undergoing apoptosis or necrosis. The data were analyzed using CellQuest Software.

#### RNA isolation and real-time PCR

To determine the expression levels of IGF-I and IGF-IR mRNAs in primary rat osteoblasts incubated with varying concentrations of bLF (0, 0.1, 1, 10, 100, and 1000 µg/mL) for 24 h, total RNA was extracted using the TRIzol reagent according to the manufacturer's protocol. The concentration and purity of total RNA were calculated by measuring the absorbance at 260 and 280 nm. Total RNA (1 µg) was used for the synthesis of first strand cDNA (cDNA synthesis kit; Takara, Japan). PCR primers (Table 1) were designed using the Primer 5.0 software. RT-PCR was performed using a Thermal Cycler Dice™ Real-Time System (TP800, TaKaRa). Real-time PCR was performed using 2 µL of cDNA in a 25 µL reaction volume that included the SYBR PremixEx Taq II (2×) (DRR081A, TaKaRa, Japan) and diluted gene specific primers. All reactions were performed in triplicate and analyzed by the 2<sup>-ΔΔCT</sup> method. β-Actin was used as an internal control.

#### Western blotting

For Western blot analyses, osteoblasts were treated with different concentrations of bLF (0, 0.1, 1, 10, 100, and 1000 µg/mL) for 24 h. Cells were washed twice with ice-cold PBS and then resuspended in lysis buffer (RIPA, Beyone, China) containing 1% NP-40, 0.1% SDS, 5 mmol/L EDTA, 0.5% sodium deoxycholate, 1 mmol/L sodium orthovanadate, and 1 mmol/L phenylmethylsulfonyl fluoride. Protein concentrations were determined using a BCA protein assay (Beyotime Biotech Companies, Haimen, China). For each sample, 30 µg of protein was run on a 15% polyacrylamide gel and transferred to a polyvinylidene difluoride (PVDF) membrane (Millipore,

**Table 1.** The primer sequences for real-time PCR.

Genes	GenBank numbers	Primer sequence	Product size (bp)
β-Actin	NM 031144.2	Forward 5'-GGAGATTACTGCCCTGGCTCTA-3'	150
		Reverse 5'-GACTCATCGTACTCTGCTTGCTG-3'	
IGF-I	NM 001082478.1	Forward 5'-GCACTCTGCTTGCTCACCTTTA-3'	148
		Reverse 5'-TCCGAATGCTGGAGCCATA-3'	
IGF-IR	NM 052807.2	Forward 5'-GGTCTCTAAGGCCAGAGGTGGA-3'	122
		Reverse 5'-GACGAACCTGTTGGCATTGAGGTA-3'	

Billerica, MA, USA). The membrane was incubated overnight at 4°C with the monoclonal IGF-I antibody and the monoclonal IGF-IR antibody (Abcam, UK) at a 1:1000 dilution. The secondary antibodies (Zhongshan Golden Bridge Biotechnology, China) were diluted 1:3000 in TBST. The membrane was incubated with secondary antibodies for 1 h at room temperature. The membranes were then washed and developed.

### RNA interference

We designed the interference vector (Table 2) and four interference sequences to knock down the IGF-I gene (Table 3). We synthesized double-stranded DNA containing interference sequences and ligated them into the lentiviral transfer plasmid. Third passage cells were divided into six groups: a normal control group (non-transfected group), a negative control group (transfected with control siRNA), and 4 siRNA transfection groups (transfected with each of the 4 siRNAs targeted against the IGF-I gene). The cells were transfected with the lentiviral vectors for 48 h. The mRNA expression of target

**Table 2.** The frame of interference vector.

Linker	Sense	Loop	Antisense	Terminator
CCGG		CTCGAG		TTTTTg
AATT CAAAAA		CTCGAG		

**Table 3.** IGF-1 RNA interference sequence.

No	Target sequence
siRNA1	3'-GCACTCTGCTTGCTCACCTT-5'
siRNA2	3'-GCTCTTCAGTTCGTGTGGA-5'
siRNA3	3'-GGCATTGTGGATGAGTGTGC-5'
siRNA4	3'-GGAAGTACACTTGAAGAACAC-5'

genes in the osteoblasts was tested by RT-PCR.

### Combined siRNA and bLF treatment

Cells were divided into the following groups: a normal control

group (non-transfected group); a 10 µg/mL bLF; a negative control group+10 µg/mL bLF; siRNA transfection group; and an siRNA transfection group+10 µg/mL bLF. The cells were transfected with the lentiviral vectors for 48 h and then the culture medium was replaced with medium containing 10 µg/mL bLF for 24 h. Apoptosis was determined by flow cytometry.

### Statistical analysis

The results are reported as the means±standard deviation (SD). Data analyses were performed using the Statistical Package for the Social Sciences (SPSS version 16.0) software package. The differences among the groups were determined using a one-way ANOVA model with *post-hoc* tests. Differences were considered significant if  $P < 0.05$ .

## Results

### Identification of primary cultured rat osteoblasts

#### Cell morphology

Typical features of osteoblasts were adherent growth and abundant cytoplasm. Cells that were considered to display irregular morphology included triangular, polygonal, and long shuttle-shaped cells (Figure 1A).

#### Alkaline phosphatase staining

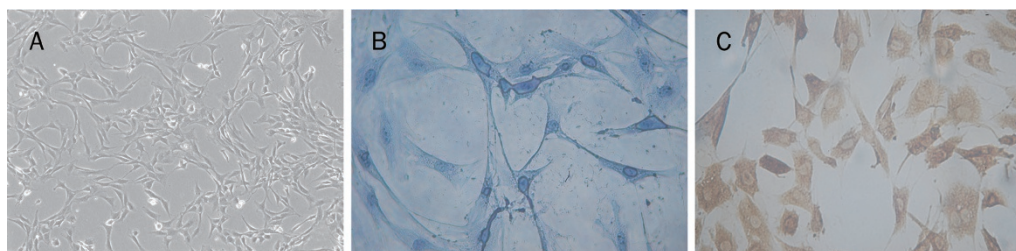
Blue-violet nuclei were considered positive for alkaline phosphatase. Brown particles were observed within the cytoplasm and some dispersed around the surrounding cells (Figure 1B).

#### Type-I collagen immunohistochemistry

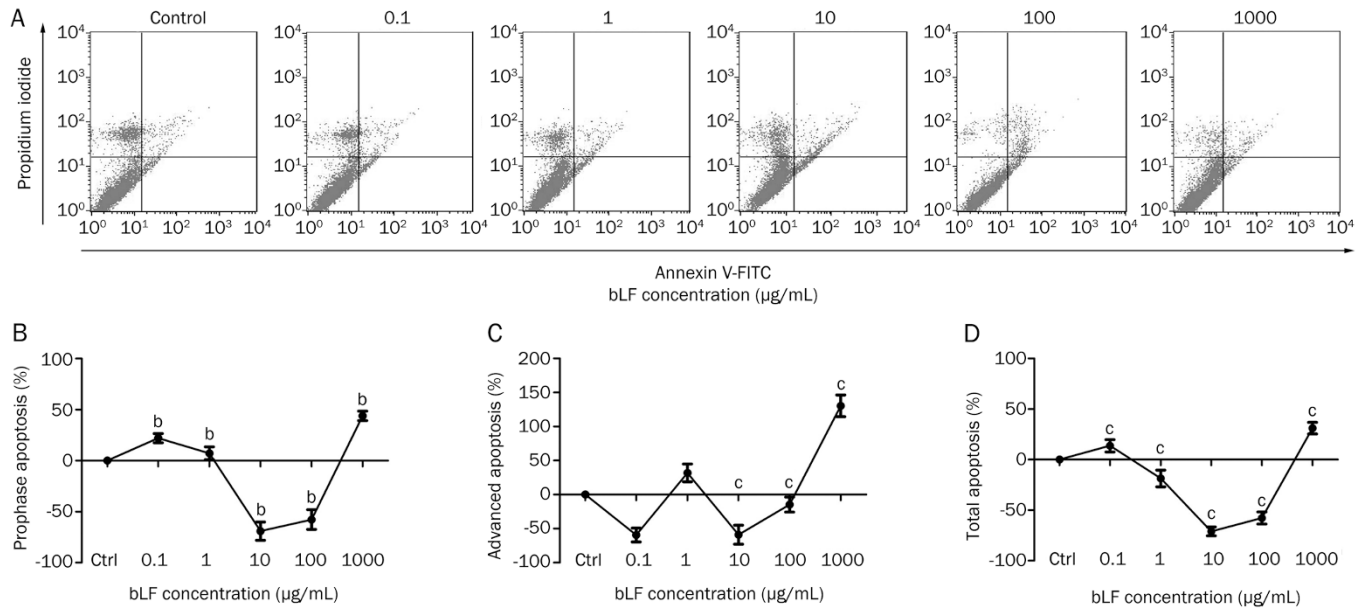
In accordance with the defined characteristics of osteoblasts, brown cytoplasmic staining was observed (Figure 1C).

### The effects of bLF on the apoptosis of primary osteoblasts

As shown in Figure 2, both 10 and 100 µg/mL bLF significantly inhibited the apoptosis of primary osteoblasts compared to untreated controls. At a concentration of 10 µg/mL, bLF inhibits apoptosis by 70%. We also found that bLF mainly affected early stages of apoptosis and total apoptosis. In bLF-treated groups (1, 10, and 100 µg/mL) total apoptosis was significantly inhibited ( $P < 0.01$ ) compared to the control group. bLF at concentrations of 1, 10, and 100 µg/mL also inhibited early stages of apoptosis, whereas 1000 µg/mL bLF stimulated



**Figure 1.** (A) Primary cultured rat osteoblasts were incubated for 48 h, ×200. (B) Alkaline phosphatase staining, ×400. (C) Type-I collagen immunohistochemistry, ×400.



**Figure 2.** The rate of apoptosis in the different apoptotic phases in response to treatment with varying concentrations of bLF for 24 h. (A) The rate of prophase apoptosis. (B) The rate of advanced apoptosis. (C) The rate of total apoptosis. <sup>b</sup> $P < 0.05$ , <sup>c</sup> $P < 0.01$  compared to the control group. Each experiment was performed in triplicate.

both early stages of apoptosis and total apoptosis. However, varying concentrations of bLF treatment caused no significant alterations in late stages of apoptosis.

#### The effects of bLF on IGF-I and IGF-IR gene expression

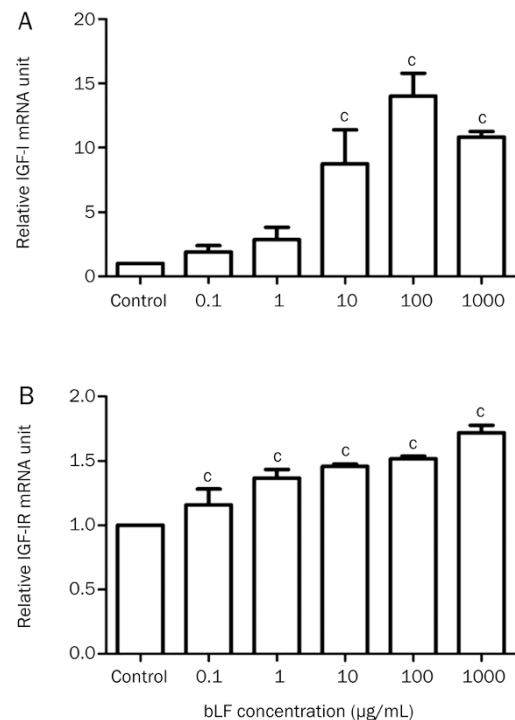
The addition of bLF to the culture medium increased the level of IGF-I mRNA expression. A significant increase in IGF-I mRNA expression was observed at a bLF concentration of 10 µg/mL, while the highest mRNA expression level was observed at a concentration of 100 µg/mL bLF (Figure 3A). Furthermore, addition of bLF to the medium significantly increased the levels of IGF-IR mRNA in a dose-dependent manner. The highest bLF concentration tested (1000 µg/mL bLF) was the most effective at promoting IGF-IR mRNA expression (Figure 3B).

#### The effects of bLF on IGF-I and IGF-IR protein expression

The addition of bLF to the culture medium significantly increased the levels of IGF-I protein in a dose-dependent manner. The highest bLF concentration tested (1000 µg/mL bLF) was the most effective at promoting IGF-I protein expression (Figure 4A). Moreover, addition of bLF to the culture medium significantly increased the level of IGF-IR protein in a dose-dependent manner. The highest bLF concentration tested (1000 µg/mL) was also the most effective at promoting IGF-IR protein expression (Figure 4B).

#### Optimal selection of siRNAs

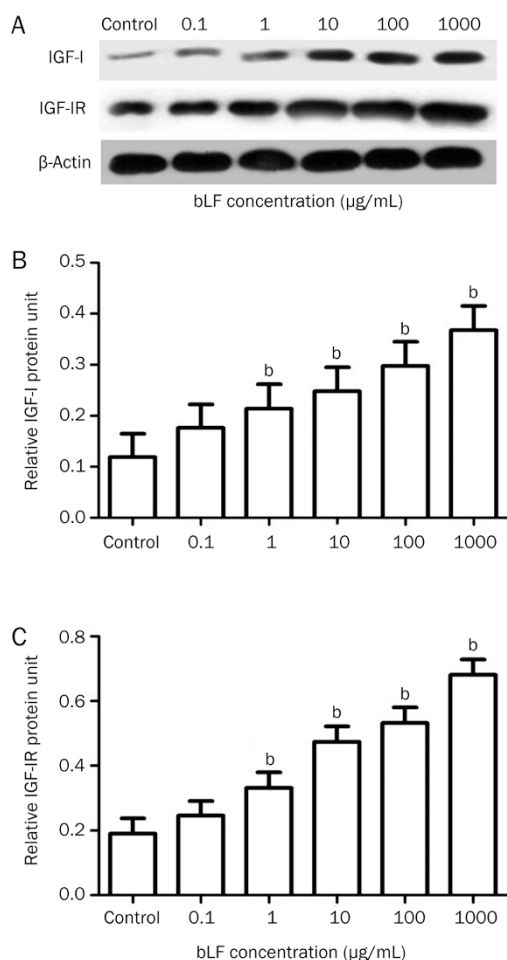
The cells were transfected at a high efficiency (>70%) with lentiviral vectors that contained one of the 4 targeted siRNAs or the negative siRNA (Figure 5). Based on the outcome of RT-PCR analyses, we confirmed that siRNAs 1–4 all achieved



**Figure 3.** (A) The expression of IGF-1 mRNA in response to treatment with varying concentrations of bLF for 24 h. (B) The expression of IGF-1R in response to treatment with varying concentrations of bLF for 24 h. <sup>c</sup> $P < 0.01$  compared to the control group. Each experiment was performed in triplicate.

knockdown of the IGF-I gene compared to the negative siRNA ( $P < 0.01$ ). The most efficient gene silencing sequence was





**Figure 4.** (A) The expression of IGF-1 protein in response to treatment with varying concentrations of bLF for 24 h. (B) The expression of IGF-1R protein in response to treatment with varying concentrations of bLF for 24 h. <sup>b</sup> $P < 0.05$  compared to the control group. Each experiment was performed in triplicate.

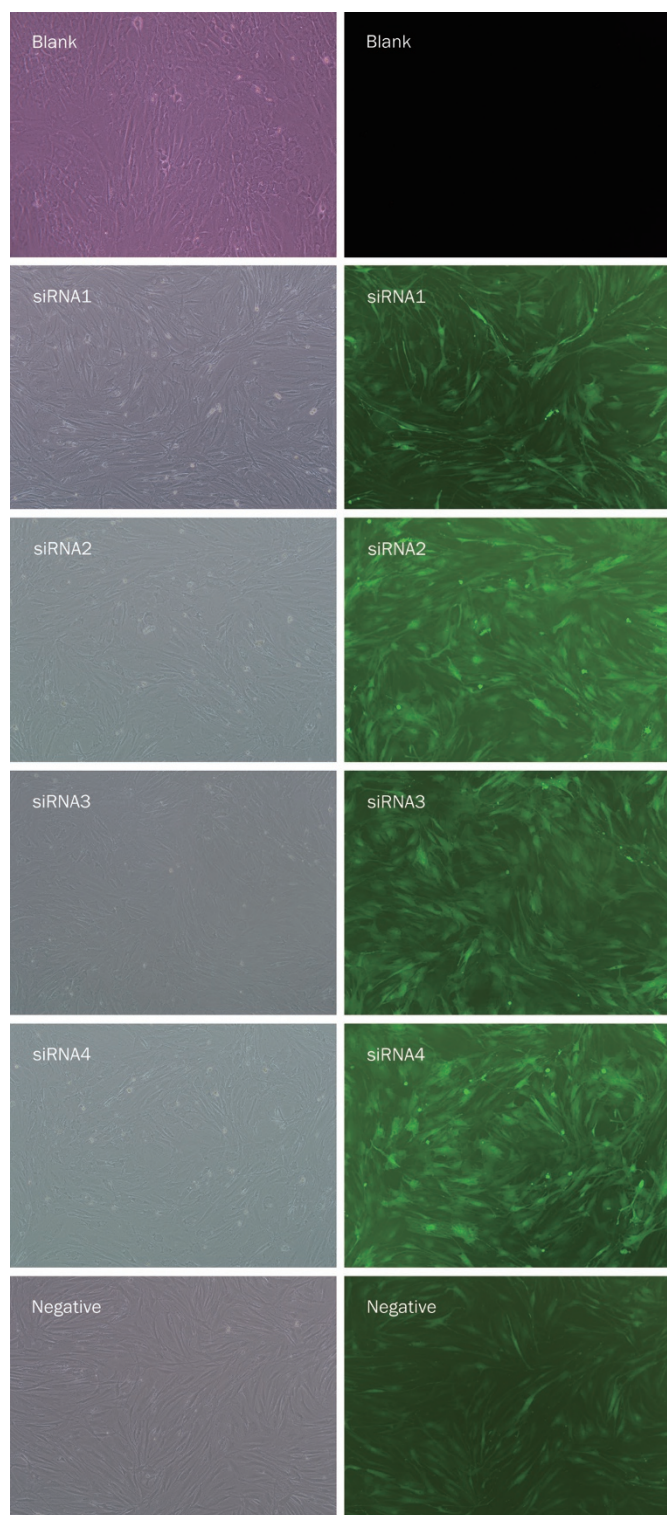
siRNA 1. The negative siRNA sequence had no effect on IGF-I gene expression (Figure 6).

#### The effects of IGF-I siRNAs on anti-apoptotic action of bLF on rat osteoblasts

Apoptosis was significantly inhibited ( $P < 0.01$ ) compared to the normal control group in both the 10 μg/mL bLF group and the negative control group+10 μg/mL bLF. In the siRNA transfection group, the rate of apoptosis increased by 14% ( $P < 0.05$ ). There were no significant differences in the rate of apoptosis between the siRNA transfection group and the siRNA transfection group+10 μg/mL bLF ( $P > 0.05$ ). Knockdown of the IGF-I gene in osteoblasts with siRNA markedly increased the osteoblast apoptosis (Figure 7).

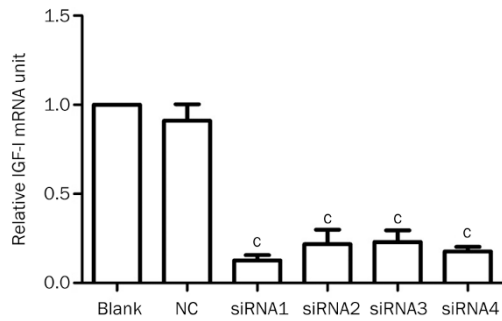
#### Discussion

The present study found that bLF significantly inhibited osteoblast apoptosis at a concentration of 10 μg/mL. Interestingly,



**Figure 5.** The expression of the green fluorescent protein in osteoblasts. The MOI was 60. The rate of transfection was >70%. The pictures in the left and right column have the same field. The pictures are photographed under normal microscope (left) and the fluorescence microscope (right).

at a concentration of 1000 μg/mL, bLF stimulated apoptosis. These results confirmed that bLF has potent anti-apoptotic



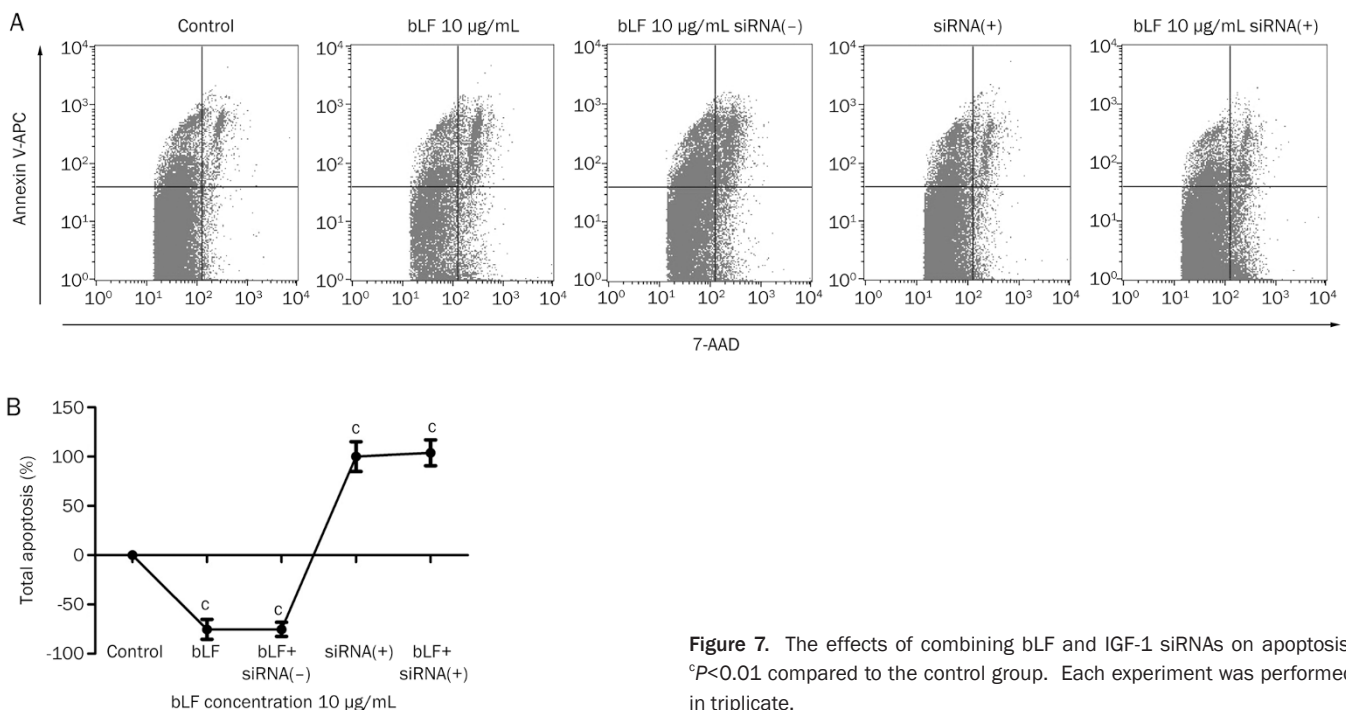
**Figure 6.** The expression level of IGF-1 mRNA in response to treatment with lentiviral vectors that contained siRNAs 1–4 or the negative siRNA.  $^*P < 0.01$  compared to the control group. Each experiment was performed in triplicate.

effects on osteoblasts, whereas high concentrations of bLF are toxic to the cells. We also found that bLF promoted the expression of IGF-I and IGF-IR in a dose-dependent manner at concentrations ranging from 1 to 1000  $\mu\text{g}/\text{mL}$ . Vincent *et al*<sup>[10]</sup> reported that cell survival was controlled by the IGF signaling pathway. Therefore, we wanted to elucidate the underlying mechanisms by which bLF inhibits apoptosis of osteoblasts.

Recent studies have demonstrated the importance of osteoblast apoptosis in bone diseases such as glucocorticoid-induced osteoporosis and have shown that agents such as bisphosphonates<sup>[11]</sup> and estrogen<sup>[12]</sup> can be used to prevent osteoblast apoptosis. Osteoblast apoptosis is an automatic process of programmed cell death<sup>[13]</sup> that plays a key role in maintaining the number of osteoblasts. An increase in osteoblast apoptosis is an important cause of low bone mass.

Osteoporosis is a major cause of morbidity and health expenditure in the aging population<sup>[14]</sup>. It is defined as a reduction in bone mass and a change in bone microarchitecture that increases the susceptibility to fracture<sup>[15]</sup>. Bone loss results from an imbalance between the activities of osteoclasts and osteoblasts that leads to an uncoupling of bone resorption and bone formation<sup>[16]</sup>. Current therapies for osteoporosis include calcium, vitamin D, agents that inhibit bone resorption, and other drugs; however, patients are still at risk for developing low bone mass and fractures. An intensive search is underway for the identification of other potential therapeutic compounds that have anabolic effects on bone. Bovine lactoferrin is an iron-binding glycoprotein that belongs to the transferrin family. It is present in breast milk, in epithelial secretions, and in the secondary granules of neutrophils. In healthy subjects, bLF circulates at concentrations of  $2 \times 10^{-6}$ – $7 \times 10^{-6}$  g/mL. It is a pleiotropic factor with potent antimicrobial and immunomodulatory activities<sup>[17]</sup>. *In vitro* studies have demonstrated that bLF promotes osteoblast growth both by affecting osteoblast proliferation and by preventing osteoblast apoptosis<sup>[18]</sup>. In this study, we determined the rate of apoptosis at different apoptotic phases in osteoblasts treated with varying concentrations of bLF. Apoptosis was induced by serum deprivation for 24 h. The results showed that bLF mainly affects early stages of apoptosis and total apoptosis in osteoblasts at 1–100  $\mu\text{mol}/\text{L}$ , while it has no effects on late stages of apoptosis. In addition, bLF significantly inhibited osteoblast apoptosis at a concentration of 10  $\mu\text{g}/\text{mL}$ .

Signals from other cells are clearly required for cell survival, cell growth, and proliferation<sup>[19]</sup>. Osteoblasts and oligodendrocytes require specific growth factors such as IGF-I and IGF-II when grown in culture<sup>[20, 21]</sup>. When deprived of survival fac-



**Figure 7.** The effects of combining bLF and IGF-1 siRNAs on apoptosis.  $^*P < 0.01$  compared to the control group. Each experiment was performed in triplicate.

tors, these cells appear to activate an intrinsic death program and kill themselves, a process called apoptosis. IGF-I plays an important role in the preservation of bone mass. Recent studies have shown that IGF-I not only functions like insulin by inducing cell proliferation but also plays a crucial role in inhibiting apoptosis. Using neuronal cell lines, Kenchappa<sup>[22]</sup> found that IGF-I significantly blocked apoptosis induced by tumor necrosis factor- $\alpha$  *in vitro*. Tumber *et al*<sup>[23]</sup> assessed the effects of neutralizing antibodies on growth factors that are produced by osteoblasts. They found that antibodies against IGF-I and -II were capable of preventing the survival effects of conditioned medium on low density osteoblast cultures whereas antibodies against platelet-derived growth factor (PDGF) and basic fibroblast growth factor (bFGF) had no effect on cell survival. Anti-apoptotic effects that are mediated by the IGF signaling pathway are evident in osteoblasts and other diverse cell types<sup>[23]</sup>. For instance, IGF-IR signaling likely plays an important role in carcinogenesis by inhibiting apoptosis. Thus, IGF-I is important for maintaining proliferation and inhibiting apoptosis in osteoblasts.

Osteoblast apoptosis can be inhibited by bLF. Grey<sup>[4]</sup> demonstrated that bLF has LRP1-independent anti-apoptotic effects in osteoblasts that do not involve the PI3 kinase or p42/44 MAP kinase signaling pathways. Although bLF activates PI3 kinase-dependent Akt signaling, this effect is neither LRP1-dependent nor required for bLF-induced cell survival. Furthermore, inhibiting the activation of the p42/44 MAP kinase pathway does not abrogate the pro-survival actions of bLF. Nonetheless, the molecular mechanisms by which bLF promotes osteoblast survival remained unknown.

Further investigations into the mechanism of bLF action in osteoblasts are currently underway. Naot used microarrays and low-density arrays to study changes in gene expression induced by bLF in osteoblasts<sup>[24]</sup>. Significant up-regulation of IGF-I and down-regulation of dickkopf homolog 1 (DKK1) mRNAs have been identified in human primary osteoblasts. Similarly, increases in the expression of a number of gene transcripts in rodent osteoblasts, including prostaglandin-endoperoxide synthase 2 (P<sub>tg</sub>s2) and nuclear factor of activated T cells-1 (Nfatc1)<sup>[24]</sup>. The significance of these changes and their ability to promote osteoblast differentiation are currently being investigated. Here we show that the expression of IGF-I and IGF-IR mRNAs are significantly increased in rodent osteoblasts treated with bLF. Treatment of primary osteoblast cells with bLF for 24 h resulted in a dose-dependent activation of IGF-I and IGF-IR protein expression. Therefore we concluded that bLF might inhibit osteoblast apoptosis by upregulating the expression of IGF-I. Furthermore, IGF-I knockdown promoted osteoblast apoptosis, thereby confirming that bLF inhibits apoptosis via IGF-I.

In conclusion, certain concentrations of lactoferrin can inhibit apoptosis in primary rat osteoblast cultures. The greatest inhibition of osteoblast apoptosis was observed at a concentration of 10  $\mu$ g/mL. Lactoferrin induced the expression of IGF-I and IGF-IR in a dose-dependent manner. Finally, lactoferrin may inhibit osteoblast apoptosis by upregulating the

expression of IGF-I.

## Acknowledgements

This study was supported by the National Natural Science Foundation of China (No 81270968).

## Author contribution

Jian-ming HOU, En-yu CHEN, Shi-chao WEI, and Fan LIN designed the research project. Jian-ming Hou supervised the project. En-yu CHEN performed the *in vitro* experiments, analyzed the data and wrote the manuscript. Qing-ming LIN, Xu-hua LAN, Ying XUE, and Man WU revised the manuscript.

## References

- 1 García-Montoya IA, Cendón TS, Arévalo-Gallegos S, Rascón-Cruz Q. LF a multiple bioactive protein: an overview. *Biochim Biophys Acta* 2012; 1820: 226–36.
- 2 Baker HM, Baker EN. A structural perspective on LF function. *Biochem Cell Biol* 2012; 90: 320–8.
- 3 Ward PP, Paz E, Conneely OM. Multifunctional roles of LF: a critical overview. *Cell Mol Life Sci* 2005; 62: 2540–8.
- 4 Grey A, Zhu Q, Watson M, Callon K, Cornish J. LF potently inhibits osteoblast apoptosis, via an LRP1-independent pathway. *Mol Cell Endocrinol* 2006; 251: 96–102.
- 5 Amini AA, Nair LS. LF: a biologically active molecule for bone regeneration. *Curr Med Chem* 2011; 18: 1220–9.
- 6 Cornish J, Naot D. LF as an effector molecule in the skeleton. *Biometals* 2010; 23: 425–30.
- 7 Hou JM, Xue Y, Lin QM. Bovine LF improves bone mass and microstructure in ovariectomized rats via OPG/RANKL/RANK pathway. *Acta Pharmacol Sin* 2012; 33: 1277–84.
- 8 Cornish J, Callon KE, Naot D, Palmano KP, Banovic T, Bava U, *et al*. LF is a potent regulator of bone cell activity and increases bone formation *in vivo*. *Endocrinology* 2004; 145: 4366–74.
- 9 Grey A, Banovic T, Zhu Q, Watson M, Callon K, Palmano K, *et al*. The low-density lipoprotein receptor-related protein 1 is a mitogenic receptor for LF in osteoblastic cells. *Mol Endocrinol* 2004; 18: 2268–78.
- 10 Vincent AM, Feldman EL. Control of cell survival by IGF signaling pathways. *Growth Horm IGF Res* 2002; 12: 193–7.
- 11 Plotkin LI, Weinstein RS, Parfitt AM, Roberson PK, Manolagas SC, Bellido T. Prevention of osteocyte and osteoblast apoptosis by bisphosphonates and calcitonin. *J Clin Invest* 1999; 104: 1363–74.
- 12 Gohel A, McCarthy MB, Gronowicz G. Estrogen prevents glucocorticoid-induced apoptosis in osteoblasts *in vivo* and *in vitro*. *Endocrinology* 1999; 140: 5339–47.
- 13 Hill PA, Tumber A. Ceramide-induced cell death/survival in murine osteoblasts. *J Endocrinol* 2010; 206: 225–33.
- 14 Cummings SR, Melton LJ. Epidemiology and outcomes of osteoporotic fractures. *Lancet* 2002; 359: 1761–7.
- 15 Garnero P, Delmas PD. Evaluation of risk for osteoporosis fractures. In: Bilezikian JP, Raisz LG, Rodan GA, editors. *Principles of bone biology*. 2nd ed. San Diego, CA: Academic Press; 2002. p 1291–1301.
- 16 Ganji MR. Postmenopausal osteoporosis treatment and risk of urinary calculus development. *Iran J Kidney Dis* 2013; 7: 171–4.
- 17 Naot D, Grey A, Reid IR, Cornish J. LF — a novel bone growth factor. *Clin Med Res* 2005; 5: 93–101.
- 18 Cornish J. LF promotes bone growth. *Biometals* 2004; 17: 331–5.
- 19 Mercer WE, Baserga R. The transformation-related p53 protein: a

- potential regulator of cell proliferation. *Prog Clin Biol Res* 1985; 177: 171–91.
- 20 Barres BA, Hart IK, Coles HS, Burne JF, Voyvodic JT, Richardson WD, *et al*. Cell death and control of cell survival in the oligodendrocyte lineage. *Cell* 1992; 70: 31–46.
- 21 Hill PA, Tumber A, Meikle MC. Multiple extracellular signals promote osteoblast survival and apoptosis. *Endocrinology* 1997; 138: 3849–58.
- 22 Kenchappa P, Yadav A, Singh G, Nandana S, Banerjee K. Rescue of TNF-alpha inhibited neuronal cells by IGF-1 involves Akt and c-Jun N-terminal kinases. *J Neurosci Res* 2004; 76: 466–74.
- 23 Tumber A, Meikle MC, Hill PA. Autocrine signals promote osteoblast survival in culture. *J Endocrinol* 2000; 167: 383–90.
- 24 Cornish J, Naot D. LF as an effector molecule in the skeleton. *Bio-metals* 2010; 23: 425–30.