

Original Article

Initial experience of heroin use under a two-chained operant schedule influences drug-seeking behavior after one month of abstinence

Bin LU, Mu LI, Yuan-yuan HOU, Jie CHEN, Zhi-qiang CHI, Jing-gen LIU*

State Key Laboratory of Drug Research, Shanghai Institute of Materia Medica, Chinese Academy of Sciences, Shanghai 201203, China

Aim: To evaluate the influence of an initial heroin experience under a modified two-chained training schedule on drug-seeking behavior after a long abstinence period.

Methods: Rats were trained to respond for intravenous heroin (120 µg/kg) under a heterogeneous chained schedule of reinforcement using different responses in the first and second links of the chain. Animals received low-frequency drug administration training for four days and were then subjected to one month of abstinence in their home cages. Heroin-seeking behavior induced by re-exposure to the first chain associated context or discriminative stimuli was assessed after abstinence.

Results: Almost all animals could acquire operant skills quickly under the two-chained schedule training for four days, as measured in first active response latency, travel speed and goal-box enter latency. Both first chain associated context and discriminative stimulus could reinstate heroin-seeking behavior after one month abstinence.

Conclusion: These observations suggest that an early experience of drug use is sufficient to maintain heroin-seeking behavior even after a one month abstinence.

Keywords: heroin; initial experience; two-chained schedule; abstinence; reinstatement

Acta Pharmacologica Sinica (2010) 31: 387–392; doi: 10.1038/aps.2010.16; published online 15 Mar 2010

Introduction

Drug addiction is increasingly accepted as the progress of a series of transitions from initial drug use – when a drug is voluntarily taken because it has a hedonic effect – to loss of control over this behavior, such that ultimately it becomes compulsive^[1]. Relapse in drug seeking/taking following detoxification and/or abstinence is a major impediment in the treatment of addiction^[2]. Stimuli predicting drug availability or associated with drug reward can elicit powerful motivational properties, which are believed to induce craving and physiological arousal as well as relapse to drug seeking/taking^[3–7].

Initial drug use is clearly a key first step in the development of drug abuse and addiction; it can also be an important contributor to later abuse by affecting individuals physiologically, psychologically, and socio-culturally^[8,9]. Converging evidence indicates that early experience of drug use can trigger endur-

ing molecular and anatomical changes in the brain, which may contribute to the subsequent physical or behavioral consequences. A single administration of cocaine produces altered synaptic plasticity in the ventral tegmental area that lasts for several days^[10]. A single exposure to amphetamine or morphine is sufficient to induce long-term behavioral sensitization and associated neuroadaptations^[11,12]. Rats given a single cocaine self-administration experience exhibited drug-seeking up to 1 year after abstinence^[13]. Previous research adopted a passive drug administration paradigm or intensive self-administration schedule to investigate the effects of initial drug use; however, outside of the laboratory, recreational drug use in the early stage of addiction was under a condition of low frequency, and the voluntary activities involved in procurement of a drug differ from those required to take the drug^[14–16]. Considering the behavioral characteristics of initial drug use, here we developed a modified heterogeneous two-chained paradigm to meet the requirements of initial heroin experience.

In the present study, we aimed to determine whether animals could acquire two-chained operant skills for heroin infu-

* To whom correspondence should be addressed.

E-mail jgliu@mail.shcnc.ac.cn

Received 2009-12-01 Accepted 2010-01-21

sion during a low frequency short-term training phase and whether the initial heroin experience could maintain a robust, long-term influence on drug-seeking behavior after one month abstinence.

Materials and methods

Animals

Sprague Dawley male rats weighing 200–250 g were obtained from the Laboratory Animal Center, Shanghai Institute of Materia Medica. The behavioral experiment started when the rats weighed 280–320 g. They were housed individually in a temperature (23 ± 2 °C)- and humidity ($50\%\pm 5\%$)-controlled room with food and water available *ad libitum*. They were kept on a reverse 12 h light/12 h dark cycle. Handling of the animals (at least one min/[rat*day]) was started immediately upon receipt of the animals.

Before the beginning of surgery, each animal was randomly assigned to one of two groups. All treatments of the rats were performed in accordance with the National Institutes of Health Guide for the Care and Use of Laboratory Animals. The procedures were approved by the local Committee of Animal Use and Protection.

Drug

Heroin (diacetylmorphine hydrochloride) was obtained from the National Institute of Forensic Science (Beijing, China). The heroin was dissolved freshly in sterile 0.9% physiological saline at a concentration of 0.3 mg/mL. Drug or vehicle solution was intravenously delivered at a speed of 20 μ L per second.

Surgery

Intravenous catheterization

The catheters were constructed using guide cannulae, silicon tubing, dental cement and plugs. The rats were anesthetized with sodium pentobarbital (55 mg/kg), in combination with atropine (0.4 mg/kg). The catheters, previously sterilized in 70% alcohol, were implanted with the proximal end reaching the atrium through the right jugular vein, continuing dorsally over the right shoulder and fixed between the scapulae. The catheters were flushed daily with 0.1 mL of an antibiotic solution (Penicillin sodium; 800 000 units of this powder were dissolved in 2 mL 0.9% sterile saline) and thereafter daily with a 0.1 mL heparin solution (50 units/mL in 0.9% sterile saline).

Apparatus

The apparatus for two-chained operant training was based on a modification of the Ettenberg runway^[17] (Figure 1A). Our apparatus included a start box (23 cm \times 20 cm \times 44 cm), a straight alley (160 cm \times 12 cm \times 44 cm), a goal box (23 cm \times 20 cm \times 44 cm), a magnet track, a flow-through swivel and a drug delivery system. Both start and goal boxes were separated from the alley by means of sliding doors. Inside the start box, there were two identical nose pokes on opposite walls, which were designated as active or inactive. A blue light positioned inside the nosepoke, which could be illuminated, served as the visual

discriminative stimulus (DS). In addition, a tone generator located in the ceiling was available to provide an auditory DS. The subject's location within the apparatus was detected by three infrared photodetectors embedded in the walls along the length of the runway. A computer program for the control of operant behavioral experimentation from Anilab Software & Instrument Co, Ltd (China) was used.

Experiment procedures

Two-chained operant training

Two groups of rats were used in this experiment. After at least 3 d of recovery from surgery, the rats were trained to self-administer heroin (120 μ g/kg per infusion, iv, $n=11$) or saline ($n=8$) under a heterogeneous chained schedule of two trials per day. At the beginning of each trial, the rat was first put inside the start box, with the cannula connected to the infusion system through a flow-through swivel. The trial started when the rat made a specified number of response(s) in the active nose poke, followed by both the illumination of the blue light and a 2 s intermittent tone as the discriminative cue (DS) and the opening of the start box door. The animal was then free to travel along the length of the alley to the goal box. The crossing duration between the two doors (as detected by breaking the IR beams near the doors; see Figure 1A) was recorded as Travel Time. When the rat entered the goal box, which was detected by a photodetector inside the box, the door was closed, and an automatic heroin or vehicle iv infusion was earned. The latency to enter the goal box from the end of the straight alley was recorded as Enter Latency. The trial ended after the rat stayed inside the goal box for 5 min. We defined active nose poke responses in the start box (obtaining the opportunity to approach drug available position) as drug-seeking behavior and entering the goal box as drug taking progress (directly receiving the addictive drug).

The animal was trained under a fixed-ratio, two-chained schedule, which means that the rat needed to respond n times on the active nose poke to open the start door (FR n), and once the rat traveled through the straight alley and finally entered the goal box, heroin or saline solution was delivered once. The variable n was set to 1 during the first four trials and then increased from 2 to 5 gradually, so the schedule could be described as FR1(1), FR1(1), FR1(1), FR1(1), FR2(1), FR3(1), FR4(1), and FR5(1) (Figure 1B). The inter-run interval between two trials of each day was 6 h.

Abstinence phase

After four days of two-chained schedule training, all rats were kept in their individual home cages for a period of 1 month before reinstatement testing.

Contextual reinstatement test and extinction

Heroin-seeking behavior was tested under the extinction condition for 10 min in the start box with the start door closed. Responses on the active or inactive nose pokes were recorded but without programmed consequences. The extinction tests were conducted twice a day for 3 d.

Discriminative stimuli reinstatement test

Heroin-seeking behavior was tested under the same conditions as the extinction test, except that each response on the active nose-poke resulted in a 2 s contingent light and tone discriminative stimuli.

Statistical analyses

The data of first active response latency and latency to meet the response requirements and open the start door were assessed using a two-way analysis of variance (ANOVA) with group as a between subject factor. Data from reinstatement tests were analyzed separately for responding on the active and inactive nose-poke. All results were expressed as mean±SEM, and comparisons among groups were made using one-way ANOVA.

Results

Heterogeneous two-chained schedule training

The design of the apparatus used in this study came from Ettenberg's Runway^[17] with modification of the start box, in which two nose pokes were introduced as active and inactive operations, respectively (Figure 1A). Almost all animals in this experiment improved their skills of first chain operation during 4 d of training, as measured by first active response latency (Figure 2A). A two-factor (group×trial) ANOVA revealed a significant main effect of trial ($F_{7,171}=9.929, P<0.01$), but no significant main effect of group ($F_{1,171}=0.116, P>0.05$) or group×trial interaction ($F_{7,171}=3.47, P>0.05$). Analyses of the start door open latency also indicated a significant main effect of trial ($F_{7,171}=6.604, P<0.01$) and no significant main effect of group ($F_{1,171}=0.896, P>0.05$) or group×trial interaction ($F_{7,171}=0.366, P>0.05$) (Figure 2B). The second chain performance-alley running has been successfully used as an oper-

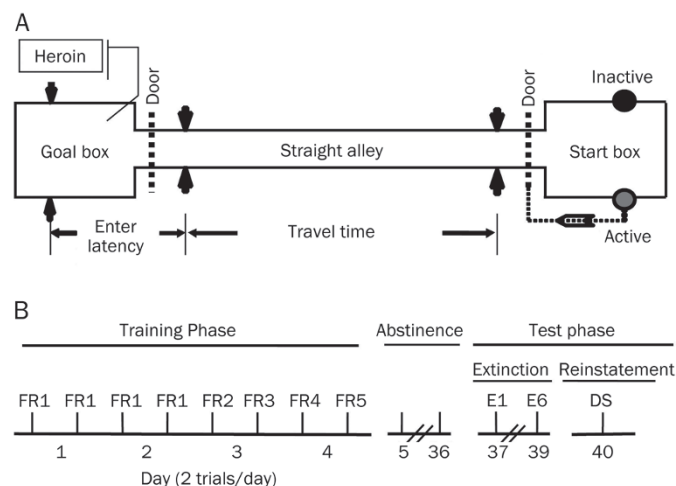


Figure 1. (A) Schematic conception of the two-chained procedure. (B) Timeline of the experimental procedures.

ant to demonstrate the reinforcing effect of drugs of abuse in rodents^[18-20]. In general, heroin intravenously administered in the goal box reinforced the running of animals, as measured by travel time and enter latency. Heroin-trained rats showed a significant lower alley-travel time (Figure 2C) and goal-box entry latency ($F_{1,18}=11.23, P<0.01$ and $F_{1,18}=9.45, P<0.01$, respectively) compared with saline-trained rats (Figure 2D).

Context-induced reinstatement of drug-associated behavior

The results of context-induced reinstatement of heroin-seeking behavior are shown in Figure 3. A one-way ANOVA revealed that heroin-trained rats exhibited significantly higher active responses relative to the saline-trained rats ($F_{1,18}=5.169,$

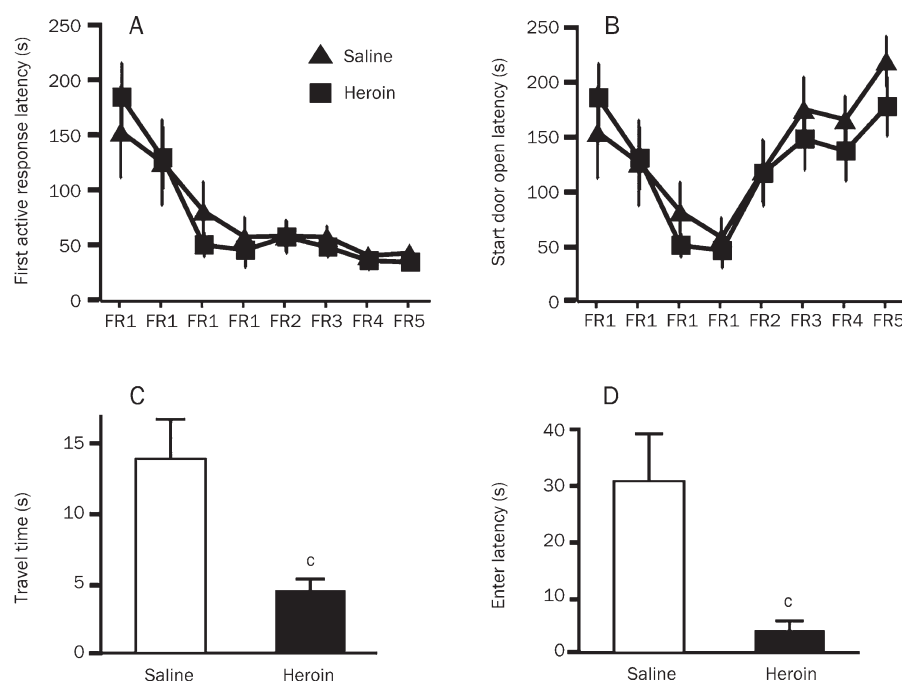


Figure 2. Acquisition of the two-chained operation in the training phase. (A) Both groups of animals improved their performance in opening the start door by responding to active nose-poke, as measured by a reduction in the first active response latency, but there were no significant differences between the two groups at each trial. (B) Mean±SEM latency to open the start door during training phase. (C) Mean±SEM travel time and (D) Goal box enter latency decreased significantly in the last training trial. ^c $P<0.01$ compared to the control (saline) group.

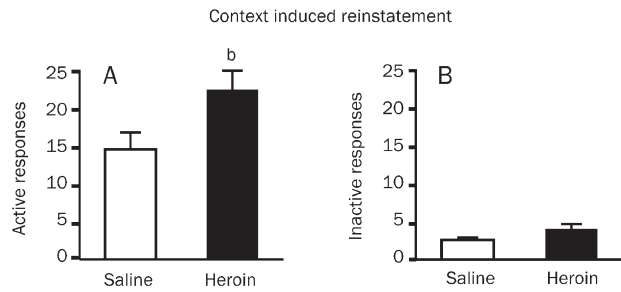


Figure 3. Context induced drug-seeking behavior after a one month abstinence. Mean±SEM responses on the previously active (A) and inactive (B) nose poke during the 10 min reinstatement test phase after a one month abstinence. ^b $P < 0.05$ compared to the control (saline) group.

$P < 0.05$). Analyses of inactive responding (a potential measure of general activity or response) revealed no significant difference between the two groups ($F_{1,18} = 3.825$, $P > 0.05$). Intensive active responding reinstated by the environment of the first chain was goal-directed but not attributed to the enhancement of general activity.

Discriminative stimuli induced reinstatement of drug-seeking behavior

After 3 d of extinction training, all rats showed low levels of nose-poke responding during the last extinction test (Figure 4A, 4B). There was no significant difference between the two groups ($F_{1,18} = 0.180$, $P > 0.05$ and $F_{1,18} = 0.391$, $P > 0.05$, respectively, for active and inactive nose poke responses). Figure 4 (C, D) illustrates the heroin-seeking behavior induced by

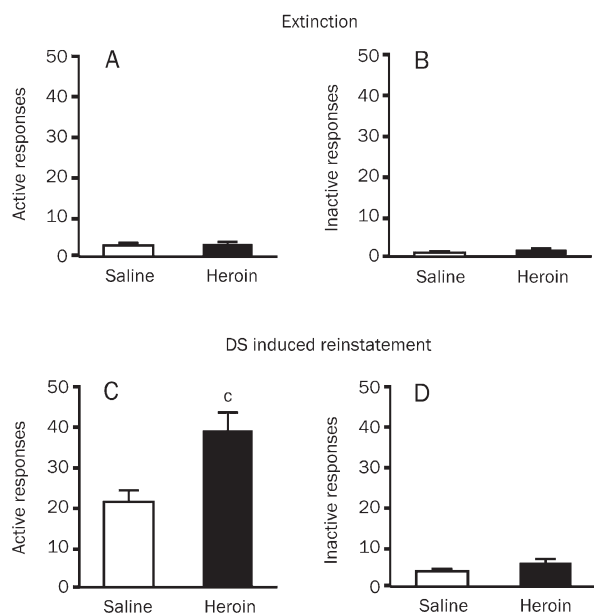


Figure 4. Discriminative stimuli (DS) induced drug-seeking behavior after a period of extinction. Mean±SEM responses to the previously active and inactive nose-poke in the last extinction session (A, B) and the DS induced reinstatement test phase (C, D). ^c $P < 0.01$ compared to the control (saline) group.

discriminative stimuli. Heroin-trained rats emitted significantly more active responses compared with saline-trained rats ($F_{1,18} = 10.324$, $P < 0.01$). Analyses of inactive responding revealed no significant effect of the group ($F_{1,18} = 3.352$, $P > 0.05$).

Discussion

Earlier experience of drug use was associated with a subsequent increased risk of drug dependence problems. While the long term effects of addictive drugs have been extensively investigated with respect to electrophysiology, neurochemistry and behavior, the present study demonstrated that early experience of heroin use under the two-chained schedule maintained influence on drug-seeking behavior after a one month abstinence. Briefly, animals in the two groups received similar two-chained schedule training; there was no significant difference in first active response latency between the two groups during training. After one month of abstinence, heroin-reinforced animals presented with context (environment in the start box) or contingent discriminative stimuli exhibited an increased number of active responding compared to control animals, which had previously received saline solution in the goal box. These results indicated that 30 d of a forced, heroin-free period was not enough to erase the influence of the initial drug experience; the conditioned stimulus could reinstate drug-seeking behavior effectively after a long-term abstinence or extinction. These findings are consistent with the hypothesis that an early stage drug experience could contribute to the later development of drug addiction.

Drug seeking in the present animal model could be considered maintained effort to acquire availability of addictive drugs. The drug seeking behavior could be reinstated robustly with exposure to the discriminative cues that had previously been associated with drug availability. Drug taking in this study was termed to describe drug self-administration when the drug is earned in the goal-box after completion of a runway activity. In humans, the activities involved in procurement of a drug differ from those required to take it. It has been demonstrated that there is motivational distinction between drug seeking and taking in animal models^[15]. We argued that the initial experience of heroin use could be modeled by a two link chained schedule in which performance of a drug-associated response (active nose-poke) provides the opportunity to perform a drug taking response (run for heroin). The initial heroin experience should also be considered in accordance with characteristics of low frequency and voluntary activity. We adopted the nose-poke response to control the opening of the start-door as the first chain in the present study because animals can learn to acquire food rewards with a nose-poke operant response, and the contingency between nose-poke and reinforcement could be acquired quickly by rats^[21]. Although no reward was delivered in the first chain, our results showed that animals acquired this operant skill quite well over 4 d of training. The use of Ettenberg's runway as the second chain (Taking Chain) of the training schedule is the key for implementation of this two-chained paradigm. Previous work has indicated that the runway operant was a

particularly appropriate tool for investigating the behavior of animals working for drugs, and the runway operant response for heroin administration was easier to acquire for rats relative to other operant responses (*eg*, lever press)^[17]. Here, we found that opiate-reinforced rats traveled the alley more quickly and exhibited less hesitation to enter the goal-box compared to controls at the end of training phase, which is consistent with previous results in a runway procedure^[18, 20]. The results of our study demonstrated that the combination of nose-poke and runway operant responses to model behavior in the initial phase of heroin use provided greater access to the motivational states of these behaviors and could be used to investigate the neurobiological mechanism of seeking and taking behavior, respectively, during initial heroin use.

In heroin or cocaine free individuals, drug craving and relapse to drug seeking/taking could be triggered by exposure to the self-administered drug, by stimuli previously associated with drug seeking/taking, or by exposure to stressors^[16, 22-24]. Over the past decade the reinstatement model has been accepted widely to study factors that affect relapse in heroin and cocaine seeking behavior. To determine the effect of initial heroin experience on drug-seeking behavior after a prolonged abstinence, active responding reinstated by conditioned stimuli in the start box was compared between heroin-reinforced and control groups. Our results showed that active responding was reinstated by context (first chain-associated environments) after a one-month heroin-free period. In previous studies of conditioned place preference, animal preference for a morphine or cocaine paired environment could be maintained for more than 4 weeks^[25, 26]. In humans, exposure to environmental contexts previously associated with drug seeking/taking often provokes relapse to drug use, even if a long drug-free period was imposed. These results were consistent with previous reports that a long abstinence was not enough to prevent a relapse induced by certain context and cues^[6, 27-29]. In the present research, the context-induced drug-seeking responses declined to low levels after six extinction trainings, supporting the idea that extinction reliably reduces the level of drug-seeking behavior that has not been habituated or compulsive. However, it is also worth noting that extinction did not abolish the previously acquired knowledge, but rather masked it temporarily^[30], and drug-seeking behavior could be reinstated in other ways, for example, with discriminatory stimuli.

In summary, the results of the current study clearly demonstrate that early experience of drug use was sufficient to influence drug-seeking behaviors after a one month abstinence. Drug craving and relapse to drug seeking/taking could be attributed to complex molecular, neurochemical and even morphological adaptations in neurocircuits. The remodeling of reward, motivation, memory and control neurocircuits during initial drug use may result in a long lasting saliency value for the drug and its associated cues^[31-36]. Therefore, future studies will be needed to investigate the molecular and neurocircuits underlying such complex adaptations for understanding the mechanisms of addiction development.

Acknowledgements

This study was supported by the National Basic Research Program grants from the Ministry of Science and Technology of China (No 2003CB515400 and No 2009CB522000), the National Science Fund for Distinguished Young Scholars from the National Natural Science Foundation of China (No 30425002) and the Chinese Academy of Sciences (No KSCXI/YW/R/68). We thank Aaron ETTENBERG for helpful suggestions on runway behavior and Barry J EVERITT for the heterogeneous chained schedule.

Author contribution

Bin LU designed and performed the research and wrote the paper. Mu LI helped with surgery and animal training. Yuan-yuan HOU and Jie CHEN assisted with research. Zhi-qiang CHI provided consultation. Jing-gen LIU designed the research and revised the paper.

References

- 1 Everitt BJ, Robbins TW. Neural systems of reinforcement for drug addiction: from actions to habits to compulsion. *Nat Neurosci* 2005; 8: 1481-9.
- 2 Yang Z, Shao YC, Li SJ, Qi JL, Zhang MJ, Hao W, *et al*. Medication of l-tetrahydropalmatine significantly ameliorates opiate craving and increases the abstinence rate in heroin users: a pilot study. *Acta Pharmacol Sin* 2008; 29: 781-8.
- 3 de Wit H, Stewart J. Drug reinstatement of heroin-reinforced responding in the rat. *Psychopharmacology (Berl)* 1983; 79: 29-31.
- 4 See RE. Neural substrates of conditioned-cued relapse to drug-seeking behavior. *Pharmacol Biochem Behav* 2002; 71: 517-29.
- 5 Shaham Y, Shalev U, Lu L, De Wit H, Stewart J. The reinstatement model of drug relapse: history, methodology and major findings. *Psychopharmacology (Berl)* 2003; 168: 3-20.
- 6 Grimm JW, Hope BT, Wise RA, Shaham Y. Neuroadaptation. Incubation of cocaine craving after withdrawal. *Nature* 2001; 412: 141-2.
- 7 Zhou W, Zhang F, Tang S, Liu H, Gu J, Yang G. The dissociation of heroin-seeking patterns induced by contextual, discriminative, or discrete conditioned cues in a model of relapse to heroin in rats. *Psychopharmacology (Berl)* 2005; 181: 197-206.
- 8 Anthony JC, Petronis KR. Early-onset drug use and risk of later drug problems. *Drug Alcohol Depend* 1995; 40: 9-15.
- 9 Wagner FA, Anthony JC. From first drug use to drug dependence; developmental periods of risk for dependence upon marijuana, cocaine, and alcohol. *Neuropsychopharmacology* 2002; 26: 479-88.
- 10 Ungless MA, Whistler JL, Malenka RC, Bonci A. Single cocaine exposure *in vivo* induces long-term potentiation in dopamine neurons. *Nature* 2001; 411: 583-7.
- 11 Vanderschuren LJ, Schmidt ED, De Vries TJ, Van Moorsel CA, Tilders FJ, Schoffelmeer AN. A single exposure to amphetamine is sufficient to induce long-term behavioral, neuroendocrine, and neurochemical sensitization in rats. *J Neurosci* 1999; 19: 9579-86.
- 12 Vanderschuren LJ, De Vries TJ, Wardeh G, Hogenboom FA, Schoffelmeer AN. A single exposure to morphine induces long-lasting behavioural and neurochemical sensitization in rats. *Eur J Neurosci* 2001; 14: 1533-8.
- 13 Ciccocioppo R, Martin-Fardon R, Weiss F. Stimuli associated with a single cocaine experience elicit long-lasting cocaine-seeking. *Nat Neurosci* 2004; 7: 495-6.

- 14 Olmstead MC, Parkinson JA, Miles FJ, Everitt BJ, Dickinson A. Cocaine-seeking by rats: regulation, reinforcement and activation. *Psychopharmacology (Berl)* 2000; 152: 123–31.
- 15 Olmstead MC, Lafond MV, Everitt BJ, Dickinson A. Cocaine seeking by rats is a goal-directed action. *Behav Neurosci* 2001; 115: 394–402.
- 16 Hellems KG, Dickinson A, Everitt BJ. Motivational control of heroin seeking by conditioned stimuli associated with withdrawal and heroin taking by rats. *Behav Neurosci* 2006; 120: 103–14.
- 17 Geist TD, Ettenberg A. A simple method for studying intravenous drug reinforcement in a runway. *Pharmacol Biochem Behav* 1990; 36: 703–6.
- 18 Ettenberg A, Geist TD. Qualitative and quantitative differences in the operant runway behavior of rats working for cocaine and heroin reinforcement. *Pharmacol Biochem Behav* 1993; 44: 191–8.
- 19 Ettenberg A. The runway model of drug self-administration. *Pharmacol Biochem Behav* 2009; 91: 271–7.
- 20 Wakonigg G, Sturm K, Saria A, Zernig G. Opioids, cocaine, and food change runtime distribution in a rat runway procedure. *Psychopharmacology (Berl)* 2003; 169: 52–9.
- 21 Schindler CW, Thorndike EB, Goldberg SR. Acquisition of a nose-poke response in rats as an operant. *Bull Psychon Soc* 1993; 31: 291–4.
- 22 Shalev U, Grimm JW, Shaham Y. Neurobiology of relapse to heroin and cocaine seeking: a review. *Pharmacol Rev* 2002; 54: 1–42.
- 23 Katz JL, Higgins ST. The validity of the reinstatement model of craving and relapse to drug use. *Psychopharmacology (Berl)* 2003; 168: 21–30.
- 24 Zhou W, Zhang F, Liu H, Tang S, Lai M, Zhu H, *et al*. Effects of training and withdrawal periods on heroin seeking induced by conditioned cue in an animal model of relapse. *Psychopharmacology (Berl)* 2009; 203: 677–84.
- 25 Mueller D, Perdikaris D, Stewart J. Persistence and drug-induced reinstatement of a morphine-induced conditioned place preference. *Behav Brain Res* 2002; 136: 389–97.
- 26 Mueller D, Stewart J. Cocaine-induced conditioned place preference: reinstatement by priming injections of cocaine after extinction. *Behav Brain Res* 2000; 115: 39–47.
- 27 Di CP, Everitt BJ. Reinstatement and spontaneous recovery of cocaine-seeking following extinction and different durations of withdrawal. *Behav Pharmacol* 2002; 13: 397–405.
- 28 Lu L, Grimm JW, Dempsey J, Shaham Y. Cocaine seeking over extended withdrawal periods in rats: different time courses of responding induced by cocaine cues versus cocaine priming over the first 6 months. *Psychopharmacology (Berl)* 2004; 176: 101–8.
- 29 Vanderschuren LJ, Everitt BJ. Drug seeking becomes compulsive after prolonged cocaine self-administration. *Science* 2004; 305: 1017–9.
- 30 Crombag HS, Bossert JM, Koya E, Shaham Y. Review. Context-induced relapse to drug seeking: a review. *Philos Trans R Soc Lond B Biol Sci* 2008; 363: 3233–43.
- 31 Koob GF, Le MM. Drug addiction, dysregulation of reward, and allostasis. *Neuropsychopharmacology* 2001; 24: 97–129.
- 32 Hyman SE. Addiction: a disease of learning and memory. *Am J Psychiatry* 2005; 162: 1414–22.
- 33 Kalivas PW, Volkow ND. The neural basis of addiction: a pathology of motivation and choice. *Am J Psychiatry* 2005; 162: 1403–13.
- 34 Baler RD, Volkow ND. Drug addiction: the neurobiology of disrupted self-control. *Trends Mol Med* 2006; 12: 559–66.
- 35 Kuntz KL, Twining RC, Baldwin AE, Vrana KE, Grigson PS. Heroin self-administration: I. Incubation of goal-directed behavior in rats. *Pharmacol Biochem Behav* 2008; 90: 344–8.
- 36 Kuntz KL, Patel KM, Grigson PS, Freeman WM, Vrana KE. Heroin self-administration: II. CNS gene expression following withdrawal and cue-induced drug-seeking behavior. *Pharmacol Biochem Behav* 2008; 90: 349–56.