

## Full-length article

**A novel anti-cancer effect of genistein: reversal of epithelial mesenchymal transition in prostate cancer cells<sup>1</sup>**Lin-lin ZHANG, Lei LI, Da-peng WU, Jin-hai FAN, Xiang LI, Kai-jie WU, Xin-yang WANG, Da-lin HE<sup>2</sup>*Department of Urology, the First Affiliated Hospital of Medical School, Xi'an Jiaotong University, Xi'an 710061, China***Key words**

genistein; cell invasion; prostate cancer; epithelial mesenchymal transition

<sup>1</sup>Project supported in part by grants from the National Natural Science Foundation of China (No 30500502) and the National 863 project of China (No 2006AA020705).<sup>2</sup>Correspondence to Da-lin HE.

Phn 86-29-8532-3203

Fax 86-29-8525-1632.

E-mail dlinhe@yahoo.com.cn

Received 2008-05-05

Accepted 2008-05-28

doi: 10.1111/j.1745-7254.2008.00831.x

**Abstract**

**Aim:** The aim of the present study was to investigate whether low dose genistein affects the invasion and epithelial mesenchymal transition (EMT) of prostate cancer (PCa) cells. **Methods:** Human PCa cell lines, IA8-ARCaP and LNCaP/HIF-1a, were used in this study. The cell lines were found to process EMT in our previous study. The PCa cells were treated with increasing concentrations, from 0.1 to 75  $\mu\text{mol/L}$ . Proliferation was assessed with 3-(4,5-dimethylthiazol-2-yl)-2,5-diphenyltetrazolium bromide assay. EMT was proven by cell morphological transition and the expression changes of EMT-related markers, which were confirmed by RT-PCR, Western blotting, and indirect immunofluorescence labeling. Transwell invasion assay was used to analyze the invasive potency. **Results:** The addition of genistein to the medium reduced the IA8-ARCaP and LNCaP/HIF-1a viable cell number in a dose-dependent manner (with increasing concentrations from 15 to 75  $\mu\text{mol/L}$ ). Less than 15  $\mu\text{mol/L}$  genistein was selected as the low dose concentration, which did not affect cell proliferation. The treatment of cells with low-dose genistein induced the reversal of EMT, which was confirmed by cell morphological transition and the expression changes of EMT-related markers. The reversal of EMT in the PCa cells by low-dose genistein was in a dose-dependent manner. Moreover, low-dose genistein effectively inhibited invasion of the PCa cells *in vitro*. **Conclusion:** These results showed that treatment with low-dose genistein may be a potential strategy for the suppression of invasive growth through the reversal of EMT in cancer cells, which justifies the potential use of soybean foods as a practical chemopreventive approach for patients with PCa.

**Introduction**

Prostate cancer (PCa) is the second most frequent cause of cancer death among males in the USA<sup>[1]</sup>. The invasion and metastasis of cancer is a major cause of death among PCa patients. Despite the widespread presence of clinically insignificant tumors in elderly men, PCa commonly has an aggressive phenotype that requires prompt intervention<sup>[2]</sup>. Therefore, PCa is a highly desirable target for effective and tolerable antimetastatic drugs.

Epithelial mesenchymal transition (EMT) is an important process during tumor progression by which epithelial cells acquire mesenchymal, fibroblast-like properties

and show decreased intercellular adhesion and increased motility<sup>[3]</sup>. Increasing evidence emphasizes a critical role of EMT during PCa progression and malignant transformation, endowing the incipient cancer cell with invasive and metastatic properties<sup>[4–6]</sup>. So EMT could be a very promising therapeutic target, and the inhibition of EMT may prevent or restrain the invasion and metastasis of PCa. Ideally, it should inhibit the early steps of invasion and metastasis.

Genistein (4',5,7-trihydroxyisoflavone) is a major isoflavone constituent of soybeans and soy products. The consumption of dietary genistein in the form of soy has been associated with a lower risk of PCa<sup>[7]</sup>. Genistein

displays multiple biological activities in several preclinical model systems that relate to cancer prevention and is considered a cancer chemopreventive agent<sup>[8,9]</sup>. In addition, genistein was also suggested to have antimetastatic activity. Epidemiological studies indicate that genistein consumption is associated with a lower incidence of clinical PCa metastasis<sup>[10]</sup>, and the potential effect of genistein on the metastatic activity of tumor cells has been confirmed in several experimental studies<sup>[11–13]</sup>. At pharmacologic doses, the main effect of genistein on PCa cells appears to be the induction of apoptosis<sup>[14,15]</sup>. Some investigators have also reported that genistein suppresses PCa cell proliferation<sup>[16–18]</sup>. However, the genistein concentrations used in the majority of these studies are much higher than that is physiologically achievable. Because chemopreventive agents must be administered over long periods without toxicity, and must be given at doses associated with effective concentrations, mechanistic studies need to take these parameters into consideration<sup>[19]</sup>. Therefore, studies of genistein that take into consideration mechanisms that operate at physiologically-relevant concentrations are needed and can shed light on a widely consumed agent that may have cancer chemopreventive activity.

In our previous research<sup>[20,21]</sup>, we established a HIF-1 $\alpha$  (hypoxia-inducible factor 1  $\alpha$ ) overexpression PCa LNCaP cell line (LNCaP/HIF-1 $\alpha$ ), and successfully proved that HIF-1 $\alpha$  could induce the LNCaP cells to undergo EMT. IA8-ARCaP, a highly invasive clone of the parental ARCaP cell line<sup>[4,22]</sup>, was derived from the ascites fluid of a patient with late-stage or advanced metastatic disease, which have been identified to process EMT in a previous report<sup>[4]</sup>. The 2 PCa cell lines were used in this study as an EMT cell model.

Focusing specifically on the physiological concentrations of genistein, we found for the first time that low-dose genistein can reverse the cell phenotypes of EMT in PCa IA8-ARCaP and LNCaP/HIF-1 $\alpha$  cells without significantly affecting *in vitro* cell growth. Furthermore, low-dose genistein can inhibit tumor cell invasion of IA8-ARCaP and LNCaP/HIF-1 $\alpha$  *in vitro*.

## Materials and methods

**Genistein** Genistein (G-6649; Sigma, St Louis, MO, USA) was dissolved in DMSO as a 100 mmol/L stock and stored at  $-20^{\circ}\text{C}$  in dark conditions for a maximum of 3 weeks. Cells in the genistein-free treatment were incubated using the vehicle (DMSO of a similar concentration).

**Cell culture** Experiments were performed on 3 PCa cell lines, LNCaP, LNCaP/HIF-1 $\alpha$ , and IA8-ARCaP. LNCaP/HIF-1 $\alpha$ , with the stable overexpression of HIF-1 $\alpha$ , was

established in our previous research<sup>[21]</sup>, and was found to process EMT in our previous report<sup>[20,23]</sup>. IA8-ARCaP (a kind gift of Professor Leland WK CHUNG, Emory University, Atlanta, GA, USA), a highly invasive clone of the parental ARCaP cell line, was derived from the ascites fluid of a patient with late-stage or advanced metastatic disease and cultured in T-medium (Life Technologies, Gaithersburg, MD, USA) containing 5% fetal bovine serum<sup>[22]</sup>. IA8-ARCaP cells used in this study were from early passages, which have been identified to process EMT in previous report<sup>[4]</sup>.

**Cell viability assay** The 3-(4,5-dimethylthiazol-2-yl)-2,5-diphenyltetrazolium bromide (MTT) assay was used to determine viable cell number<sup>[24]</sup>. Briefly, PCa cells were plated in 96-well microtiter plates (1000 cells/well) for 12 h. Experimental medium containing different concentrations (0, 0.1, 0.5, 1, 5, 10, 15, 20, 50, and 75  $\mu\text{mol/L}$ ) of genistein was added, and the cells were allowed to incubate for an additional 24, 48, and 72 h. MTT (5 mg/mL in phosphate-buffered saline [PBS]; Sigma, USA) was added, and the cells were incubated for 2 h. After careful removal of the medium, 0.1 mL buffered DMSO was added to each well, and the plates were shaken. Absorbance at 570 nm (proportional to viable cell number) was then read with a multiplate reader (Bio-Rad Laboratories, Hercules, CA, USA).

**Immunofluorescence** PCa cells were treated with genistein (48 h, 15  $\mu\text{mol/L}$ ) and fixed with 4% paraformaldehyde. When needed, the cells were permeabilized for 15 min with 0.5% Triton X-100 in PBS. After blocking in PBS buffer containing 10% bovine serum (BS), the cells were incubated (2 h at room temperature) with an anti-E-cadherin monoclonal antibody diluted at 1:150 or with an anti-vimentin polyclonal antibody diluted at 1:100 in PBS buffer containing 3% BS. The cells were washed and incubated with a fluorescein isothiocyanate-conjugated secondary antibody diluted at 1:100 in PBS containing 3% BS. Cells were analyzed with a fluorescence inverted microscope (IX 50; Olympus, Yokogawa Japan).

**Western blot analysis** Cells were harvested in RIPA lysis buffer (1% NP-40, 0.1% SDS, 0.5% sodium deoxycholate, 150 mmol/L NaCl, 10 mmol/L Tris-HCl, and a protease inhibitor mixture) for 10 min on ice. The total protein concentration was determined using Bio-Rad protein assay reagent (Bio-Rad, USA). Equal amounts of total protein were separated by SDS-PAGE, transferred to nitrocellulose membranes, and probed with a human-specific anti-E-cadherin monoclonal antibody (Santa Cruz, CA, USA), an anti-vimentin polyclonal antibody (Santa Cruz,

USA), or an anti- $\beta$ -actin antibody (Sigma, USA). Horse-radish peroxidase (HRP)-conjugated secondary antibodies were used (Santa Cruz, USA), and secondary antibody detection was performed using Super Signal HRP (Pierce, Rockford, IL, USA).

**RT-PCR analysis** Total RNA was isolated from the cultured cells in the log phase using TRIzol (Invitrogen, Carlsbad, CA, USA) following the manufacturer's instructions. One microgram of total RNA was reverse transcribed at 42 °C for 60 min using oligo(dT) as a primer and avian myeloblastosis virus RT (Promega, Madison, WI, USA). PCR was performed using *Taq* (TaKaRa, Shiga, Japan) polymerase. The sequences of primers used in this report were as follows: E-cadherin 5'-GTAACCGATCAGAATGAC-3' (forward primer) and 5'-CGTGGTGGGATTGAAGAT-3' (reverse primer); vimentin 5'-TGGCACGTCTTGACCTTGAA-3' (forward primer) and 5'-GGTCATCGTGATGCTGAGAA-3' (reverse primer); and  $\beta$ -actin 5'-GTGGGGCGCCCCAGGCACCA-3' (forward primer) and 5'-CTTCCTTAATGTACGCACGATTTC-3' (reverse primer). PCR products were visualized by electrophoresis through 1.2% agarose gels and quantified with Glyko Bandscan gel analyzing software (Glyko, Novato, CA, USA). Parallel reactions were run using human  $\beta$ -actin as a control for RT-PCR. All assays were performed at least 3 times.

**Invasion assay** The invasiveness of tumor cells was performed *in vitro* using a transwell chamber system with 8.0  $\mu$ m pore polycarbonate filter inserts (Corning Coster, Cambridge, MA, USA). The lower side of the filter was coated with 10  $\mu$ L gelatin (1 mg/mL), and the upper side was coated with 10  $\mu$ L of the matrigel. PCa cells ( $5 \times 10^3$ ) were placed in the upper part of the filter. The chamber was then incubated at 37 °C for 24, 48, and 72 h. The cells were fixed with methanol and stained with Giemsa. The invasiveness of tumor cells was determined by counting the total number of cells on the lower side of the filter at 100 $\times$  magnification. For each replicate, the tumor cells in 10 randomly selected fields were determined, and the counts were averaged.

**Data analysis** Results were expressed as mean $\pm$ SEM. Statistical comparisons were made with the Student's *t*-test. ANOVA for multiple comparisons was used as noted. In all cases,  $P < 0.05$  was considered significant. All statistical tests were performed with statistical analysis software (SPSS, Chicago, IL, USA).

## Results

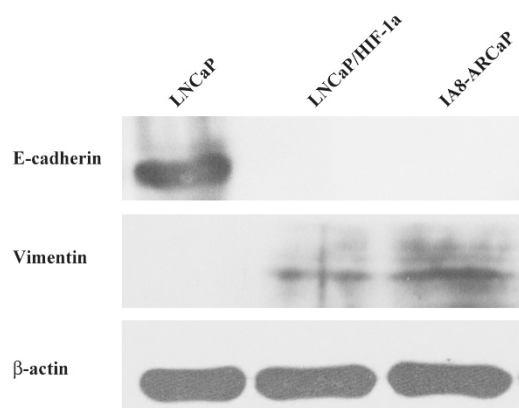
### Identification of EMT in PCa cell lines

Cells that

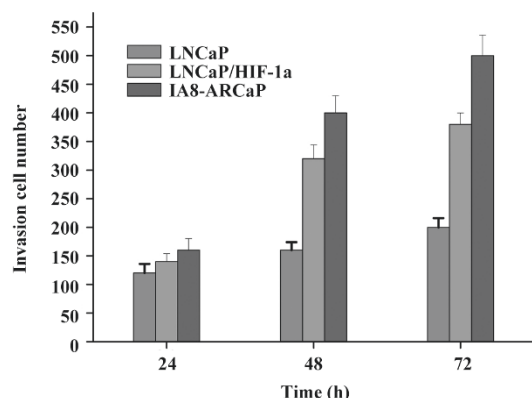
have undergone EMT are characterized by a loss of epithelial cell adhesion and cytoskeleton components and acquisition of mesenchymal components. LNCaP/HIF-1a, with a stable overexpression of HIF-1a, was established in our previous research<sup>[21]</sup>, and was found to process EMT in our previous report<sup>[20,23]</sup>. IA8-ARCaP cells have been identified to process EMT in a previous report<sup>[4]</sup>. In the present study, we first identified the characteristics of EMT in LNCaP, LNCaP/HIF-1a and IA8-ARCaP cells by examining the expression of EMT-relative markers, cell proliferation, and invasion.

As observed in Figure 1, LNCaP cells expressed higher E-cadherin, which is typically associated with epithelial cells; however, LNCaP/HIF-1a and IA8-ARCaP cells displayed a higher expression of the vimentin protein, which is associated with mesenchymal cells, and an undetectable expression of epithelium-associated E-cadherin genes. All the results were confirmed by Western blotting. Since EMT has been identified as being associated with increased cancer cell invasion and proliferation, we evaluated the possible correlation among these cell lines with different characteristics of EMT. Cell invasion detected using a transwell chamber coated with a matrigel barrier (Figure 2), and cell growth as assessed by MTT assay (Figure 3), were also analyzed. From the results, we can see that compared with the LNCaP cells, the invasive potency and growth rate for LNCaP/HIF-1a and IA8-ARCaP increased significantly ( $P < 0.05$ ).

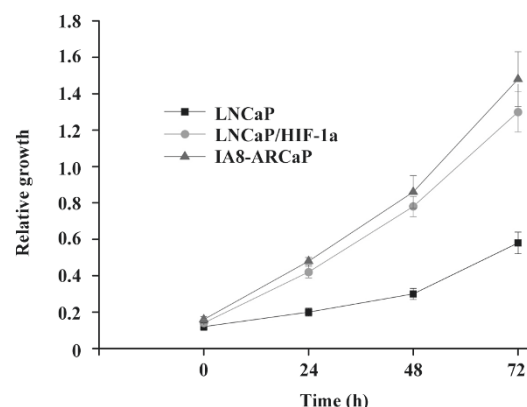
Together, these results suggest that there was an actual



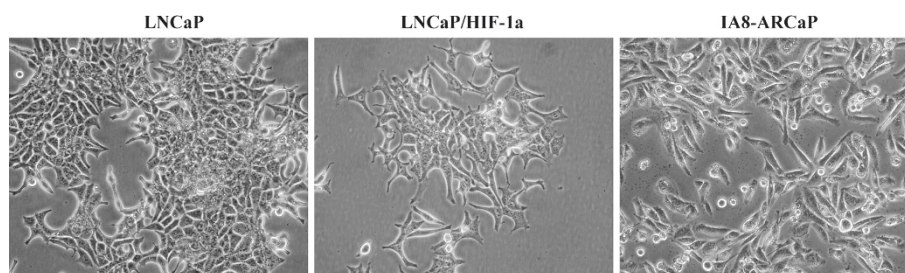
**Figure 1.** Expression of EMT-associated proteins was detected by Western blot analysis of 2 PCa cell extracts using corresponding antibodies. When the  $\beta$ -actin protein was used as an internal standard, the expression of the epithelial protein E-cadherin was only detectable in the LNCaP cells, whereas LNCaP/HIF-1a and IA8-ARCaP cells displayed higher expressions of mesenchymal protein vimentin. This means that LNCaP is an EMT-negative cell line, whereas LNCaP/HIF-1a and IA8-ARCaP have undergone the EMT process.



**Figure 2.** Invasive potency of 3 PCa cell lines with different characteristics of EMT. Three cell lines were seeded onto matrigel-coated filters in a Boyden chamber and incubated for some time under normoxic conditions. Number of cells on the underside of the filter was determined after 24, 48, and 72 h. Graph shows that the cell numbers of 3 cell lines that migrated through the matrigel filter all increased in a time-dependent pattern. Invasive potency of EMT-positive cell lines (LNCaP/HIF-1a and IA8-ARCaP) was distinctly stronger than that of the LNCaP cell line at every time point ( $P<0.05$ ).



**Figure 3.** Proliferative potency of 3 PCa cell lines with different characteristics of EMT. Growth rate of these cells was determined by MTT assay. Values for each genistein concentration tested represent the average (mean $\pm$ SEM) from 8 replicate wells (1 row of a 96-well plate) and are representative of 3 independent experiments. Compared with the LNCaP cells, the growth rate for LNCaP/HIF-1a and IA8-ARCaP increased significantly ( $P<0.05$ ), which indicates that EMT-positive cells exhibited significantly higher potential in proliferation.



**Figure 4.** Cell morphological phenotype of 3 PCa cell lines was observed under an inverted phase-contrast microscope ( $\times 100$ ). IA8-ARCaP exhibited a fibroblast-like shape and LNCaP cells displayed an epithelial-like shape. LNCaP/HIF-1a cells still showed an epithelial-like phenotype.

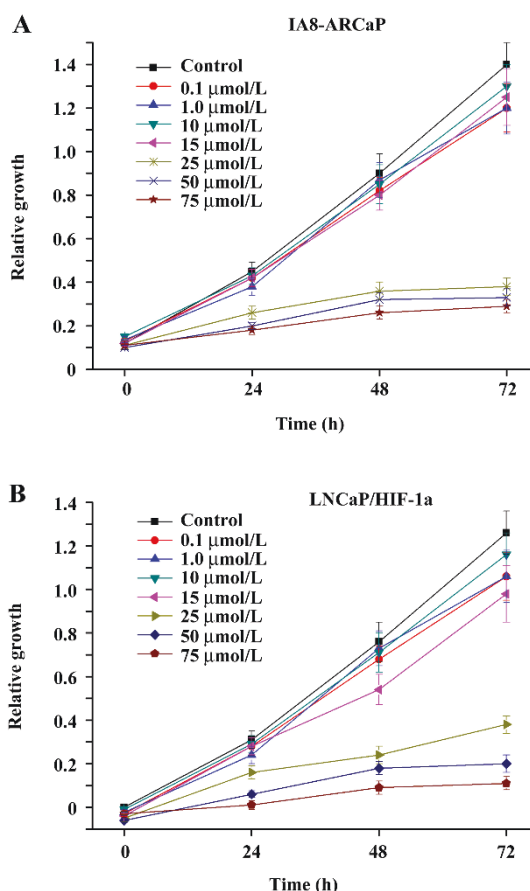
difference in the EMT phenotypes among these cell lines. According to our result, LNCaP was an EMT-negative cell line, whereas LNCaP/HIF-1a and IA8-ARCaP have undergone the EMT process. Moreover, we further observed the difference in cell morphology. As observed in Figure 4, IA8-ARCaP cells exhibited a fibroblast-like shape and LNCaP cells displayed an epithelial-like shape. However, LNCaP/HIF-1a cells still showed an epithelial-like phenotype, despite having undergone the EMT process.

**Inhibitory effect of genistein on PCa cell proliferation** Several *in vitro* studies have shown that genistein inhibits the proliferation of a wide range of cancers<sup>[25,26]</sup>. However, the inhibitory effect of genistein is often reported to be at concentrations exceeding its physiological level. Moreover, the estimation of the inhibition of cell growth by genistein is frequently, at least in part, affected by the

induction of cell death by a high concentration of genistein. To investigate if genistein exerted any effect on the growth of PCa cells, MTT assay was performed on human PCa IA8-ARCaP and LNCaP/HIF-1a cells. As shown in Figure 5, genistein almost completely inhibited the growth of IA8-ARCaP and LNCaP/HIF-1a cells in the concentration range of 15–75  $\mu\text{mol/L}$ . The addition of genistein to the medium reduced IA8-ARCaP and LNCaP/HIF-1a-viable cell numbers in a dose-dependent manner (with increasing concentrations from 15 to 75  $\mu\text{mol/L}$ ). However, low achievable genistein concentrations (<15  $\mu\text{mol/L}$ ) did not exert potent effects of growth inhibition ( $P>0.05$ ).

Since the aim of our study was to characterize the effect of genistein on EMT and cell invasion in physiologically-relevant and non-toxic concentrations, in subsequent experiments, genistein was used at concentrations of 0.1–15  $\mu\text{mol/L}$ .





**Figure 5.** Effects of genistein on the proliferation of IA8-ARCaP (A) and LNCaP/HIF-1a (B) cells. Cells were treated with genistein at the indicated concentrations. After 24, 48, and 72 h, cell proliferation was determined by MTT assay. Data are reported as the viable cell number of genistein-treated cells. Values for each genistein concentration tested represent the average (mean $\pm$ SEM) from 8 replicate wells (1 row of a 96-well plate) and are representative of 2 independent experiments.

**Reversal of EMT induced by low-dose genistein in IA8-ARCaP and LNCaP/HIF-1a cells** Changes in the cell morphology of IA8-ARCaP were assessed under an inverted phase-contrast microscope (Figure 6). We found

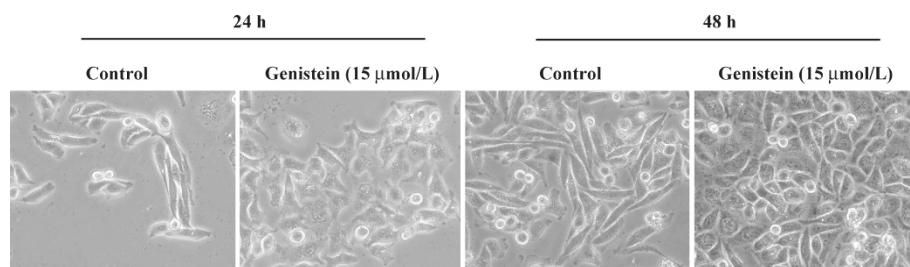
that culturing cells with low-dose genistein (15  $\mu\text{mol/L}$ ) for 24 h resulted in morphological changes of these cells from a fibroblast-like shape to an epithelial-like shape. After incubation for 48 h, the cells adopted a more epithelial-like morphology and enhanced their cell-cell contact.

In addition to the morphological changes, the phenotypic markers expressed in IA8-ARCaP cells after low-dose genistein treatment were also detected using immunofluorescence staining, RT-PCR, and Western blot assay. We observed that genistein induced the E-cadherin expression of IA8-ARCaP cells within 24 h (Figure 7;  $P<0.05$ ). However, in parallel with the marked increase in the E-cadherin epithelial marker, genistein significantly decreased the expression of mesenchymal marker vimentin at a low-dose concentration (Figure 7;  $P<0.05$ ).

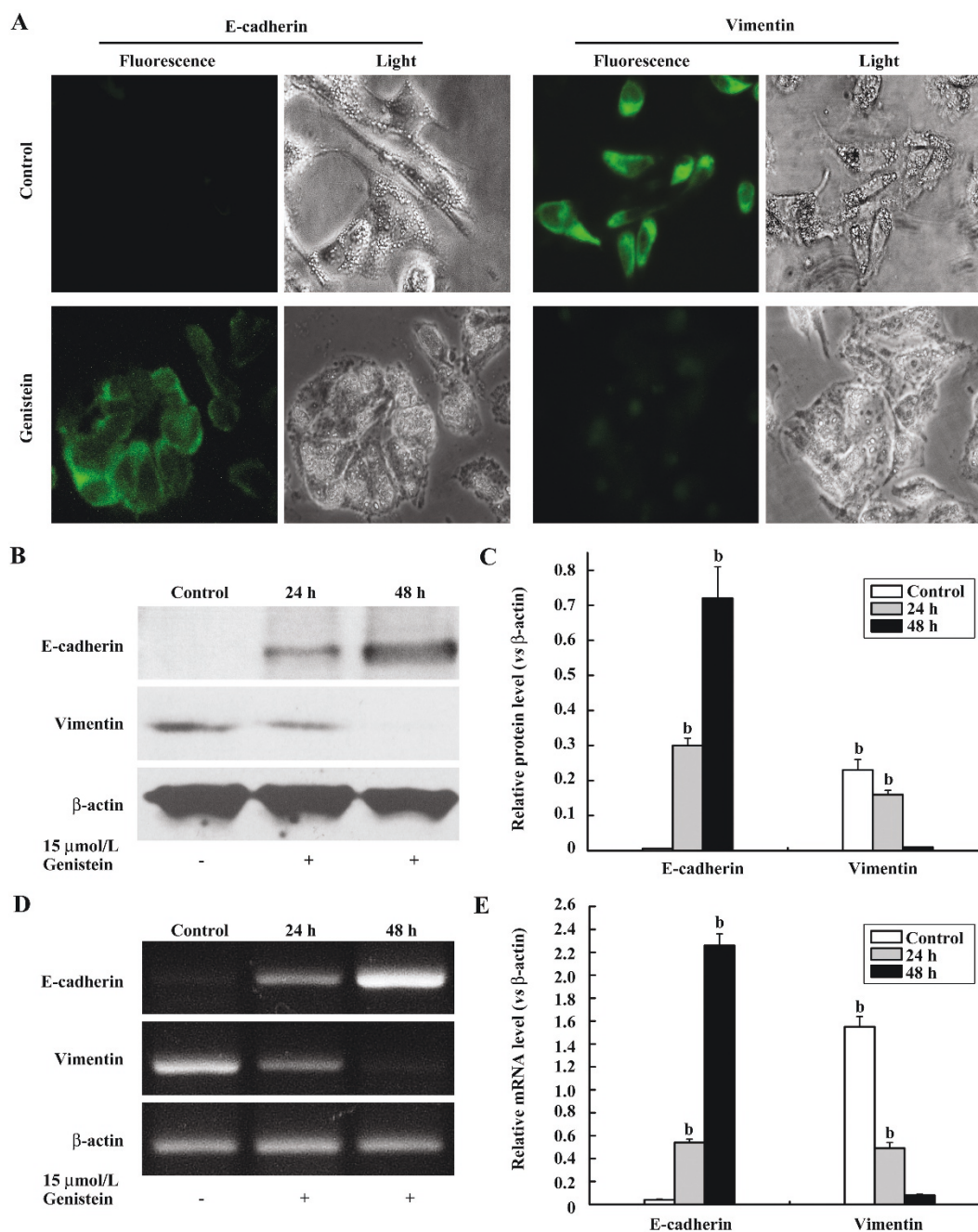
Immunostaining with antibodies to E-cadherin and vimentin showed the changes in the localization and expression level of these EMT-related proteins as an effect of the low-dose genistein (Figure 7A). Our data suggested that genistein can reverse the EMT phenotype of IA8-ARCaP cells at a low-dose concentration.

Although LNCaP/HIF-1a cells have undergone the EMT process, these cells still displayed an epithelial-like phenotype. So we detected the changes of the phenotypic markers expressed in LNCaP/HIF-1a cells after low-dose genistein (15  $\mu\text{mol/L}$ ) treatment using Western blot assay. The same results as IA8-ARCaP cells were found in LNCaP/HIF-1a cells, which showed that low-dose genistein induced the E-cadherin expression in parallel with the marked decrease in the mesenchymal marker vimentin (Figure 8C).

**Concentration-dependent manner of EMT reversal in PCa cells by low dose genistein** To further characterize the reversal of EMT induced by low-dose genistein, we analyzed the effect of genistein on EMT-related markers, E-cadherin and vimentin, in PCa cells separately treated with various doses less than 15  $\mu\text{mol/L}$  for 48 h.



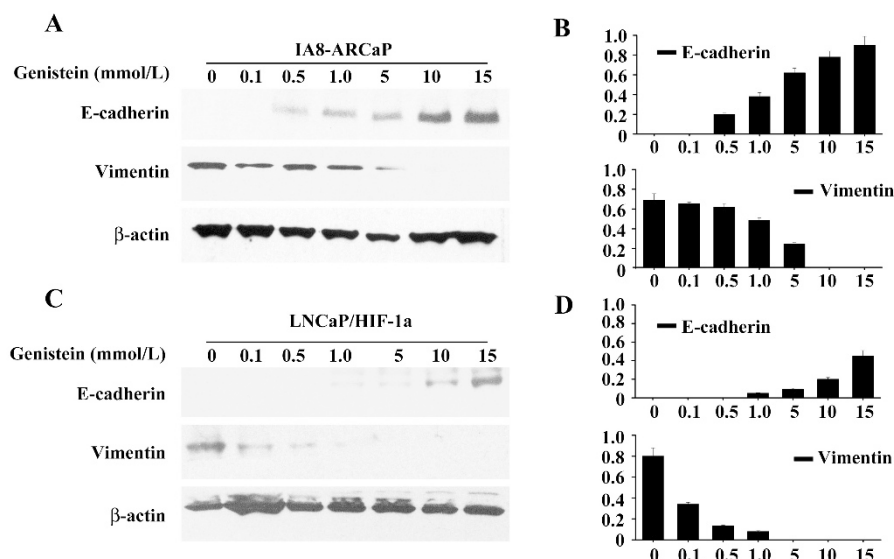
**Figure 6.** After low-dose genistein treatment, changes in the cell morphology of IA8-ARCaP were assessed under the inverted phase-contrast microscope ( $\times 200$ ). Results demonstrated the morphological changes of cells from a fibroblast-like shape to an epithelial-like shape.



**Figure 7.** Effect of genistein on EMT-related markers, E-cadherin and vimentin, in IA8-ARCaP cells. (A) after 48 h treatment with 15 μmol/L genistein, the protein expressions of E-cadherin and vimentin in the cells were examined by immunofluorescence staining (×400). (B) Western blot analysis of E-cadherin and vimentin expression bands in IA8-ARCaP cells treated by low-dose genistein (15 μmol/L) at 24 and 48 h. (C) density of the E-cadherin bands was quantified by a densitometry analysis. Data are presented after normalization by β-actin bands. (D) RT-PCR analysis of E-cadherin and vimentin expressions in IA8-ARCaP cells treated with low-dose genistein (15 μmol/L) at 24 and 48 h. (E) quantification of E-cadherin and vimentin mRNA was normalized by β-actin. Low-dose genistein treatment leads to increased E-cadherin gene expression and decreased vimentin gene expression in IA8-ARCaP cells, which reversed the cell phenotype of EMT. <sup>b</sup>*P*<0.05 vs control.

As shown in Figure 8, exposure to low doses of genistein (0.1, 0.5, 1.0, 5, 10, and 15 μmol/L) led to the upregulation of E-cadherin expression in a concentration-

dependent manner. At the same time, the expression of vimentin was reduced in the same manner. We found that low-dose genistein was able to induce the reversal of EMT



**Figure 8.** Effect of genistein on EMT-related marker, E-cadherin and vimentin, in PCa cells separately treated with low-dose genistein as indicated for 48 h. (A, C) Western blot analysis of E-cadherin and vimentin expression bands in IA8-ARCaP and LNCaP/HIF-1a cells treated by low-dose genistein (<15  $\mu\text{mol/L}$ ) at 48 h. (B, D) density of protein bands in IA8-ARCaP (B) and LNCaP/HIF-1a cells (D) was quantified by densitometry analysis. Data are presented after normalization by  $\beta$ -actin bands. Reversal of EMT in PCa cells was induced by low-dose genistein in a dose-dependent manner.

in PCa cells, IA8-ARCaP, and LNCaP/HIF-1a. These results indicate that this phenomenon was in a concentration-dependent manner.

**Low-dose genistein inhibits PCa cell invasion** To investigate whether low-dose genistein could inhibit tumor invasion, the *in vitro* invasion assay with a matrigel model was performed. As shown in Figure 9, the invasive activity of LNCaP/HIF-1a and IA8-ARCaP cells was decreased by low-dose genistein.

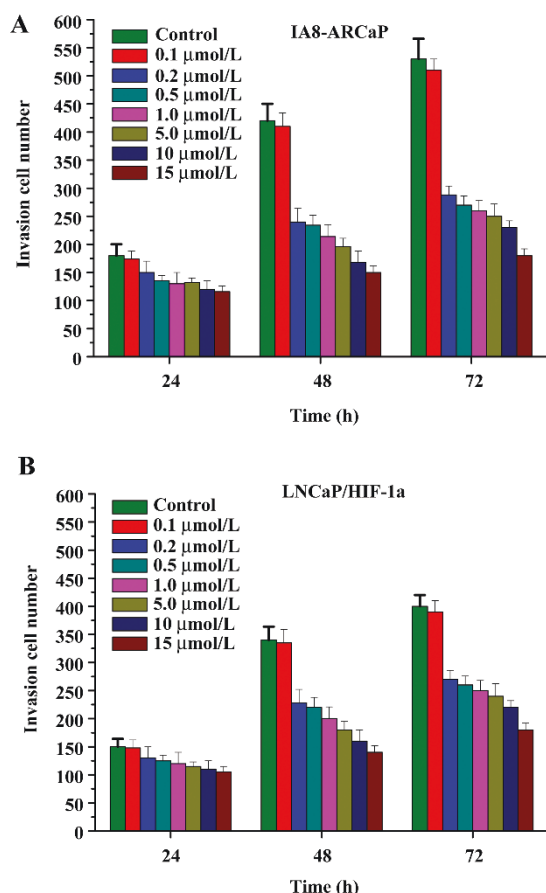
Cells were exposed to various doses (0.1, 0.2, 0.5, 1, 5, 10, and 15  $\mu\text{mol/L}$ ) genistein for 24, 48, and 72 h. The numbers of cells that digested matrigel and migrated through the 8  $\mu\text{m}$  pores in the filter were counted. We found that genistein treatment (0.2–15  $\mu\text{mol/L}$  doses) resulted in the significant inhibition of IA8-ARCaP cell invasion at every time point (Figure 9A;  $P < 0.05$ ). Similar results were obtained for LNCaP/HIF-1a cells (Figure 9B). However, treatment with 0.1  $\mu\text{mol/L}$  genistein could not inhibit PCa cell invasion ( $P > 0.05$ ). These results suggest that genistein can inhibit the *in vitro* cell invasion of IA8-ARCaP and LNCaP/HIF-1a cells at a low-dose concentration, and the threshold of the concentration to inhibit cell invasion was 0.2–15  $\mu\text{mol/L}$ .

## Discussion

To explore the effect of genistein on EMT in PCa cells, we selected 2 human PCa cell lines, IA8-ARCaP and LN-

CaP/HIF-1a. IA8-ARCaP cells can uniquely represent the molecular basis of PCa metastases and EMT, which was identified in a previous study<sup>[4]</sup>. Following cellular interaction between human PCa ARCaP cells and the mouse host, several changes in morphology, gene expression, and behavior were observed in this cell clone. This lineage-derived IA8-ARCaP cells undergoing EMT changes showed a spindle-shape fibroblastic morphology, and exhibited reduced cell adhesion and enhanced metastasis to the bone and adrenal gland<sup>[4]</sup>. LNCaP/HIF-1a, with a stable overexpression of HIF-1a, was established in our previous research<sup>[21]</sup>, and was found to process EMT in our previous report<sup>[20,23]</sup>. In the present study, we further confirmed the characteristics of EMT in IA8-ARCaP and LNCaP/HIF-1a cells by examining the expression of EMT relative markers, cell proliferation, and invasion.

In present study, we found that human PCa cells, IA8-ARCaP, and LNCaP/HIF-1a treated with genistein displayed a decreased viable cell number, which at low, physiologically-relevant genistein concentrations (<15  $\mu\text{mol/L}$ ), appears to have no inhibitory effect on cell proliferation, however, can significantly inhibit cell invasion *in vitro*. Our findings confirmed the results of previous reports that indicated that genistein suppresses the growth of human PCa cell lines. Peterson and Barnes<sup>[27]</sup> showed that pharmacological concentrations of genistein block the *in vitro* growth of LNCaP cells and DU145 cells. Onozawa



**Figure 9.** Effect of low-dose genistein on PCa cell invasion. PCa cells, IA8-ARCaP (A), and LNCaP/HIF-1a (B) were seeded onto matrigel-coated filters in a Boyden chamber. Cells were treated with low-dose genistein (<15 μmol/L) for 24, 48, and 72 h. Number of cells on the underside of the filter was determined. Genistein treatment (0.2–15 μmol/L) resulted in a significant inhibition of PCa cell invasion at every time point ( $P < 0.05$ ). Treatment with 0.1 μmol/L genistein could not inhibit PCa cell invasion ( $P > 0.05$ ). Graph shows that the cell numbers of the 2 PCa cell lines that migrated through the matrigel filter all increased in a time-dependent pattern.

*et al*<sup>[28]</sup> reported that the genistein concentration required to induce a 50% reduction in LNCaP cell growth was 40 μmol/L. Santibanez *et al*<sup>[17]</sup> also reported that high levels of genistein inhibit the proliferation and the *in vitro* invasion potential of LNCaP cells. Geller *et al*<sup>[29]</sup> reported that genistein decreased the growth of both BPH (50% reduction at 18.4 μmol/L genistein) and PCa tissue (37% reduction at 18.4 μmol/L genistein) in histoculture. Our finding of a genistein-induced growth inhibition in IA8-ARCaP and LNCaP/HIF-1a cells are consistent with these reports of the effects of genistein on PCa cell lines. At higher concentrations (>15 μmol/L), genistein also induced IA8-ARCaP and LNCaP/HIF-1a cell growth inhibition. However, at lower, more physiologically-relevant concentrations, the

primary effect of genistein on these cells appeared to be cell invasion modulation, with minimal effects on proliferation. Although plasma genistein in heavy soy consumers can reach micromolar levels<sup>[30]</sup>, concentrations above 15 μmol/L are considered supraphysiological. We therefore focused on evaluating the mechanisms underlying the anti-invasive effects of genistein at concentrations no higher than 15 μmol/L.

Recently, EMT has received much attention. EMT is actively involved in tumor invasion and metastasis. The reversal of EMT, that is MET, in cancer cells can decrease the invasive ability<sup>[3]</sup>. Therefore, the inhibition or reversal of EMT may prevent or restrain cancer invasion and metastasis. Ideally, it should inhibit the early steps of invasion and metastasis. In our study, we found that after treatment with low-dose genistein (15 μmol/L) for 48 h, IA8-ARCaP cells displayed morphological alterations from the mesenchymal phenotype to epithelial phenotype and possessed an epithelial-like morphology, accompanied by an upregulated expression of epithelial marker E-cadherin and the loss of expression of mesenchymal marker vimentin. The same results can be found in LNCaP/HIF-1a cells, which showed that low-dose genistein induced the E-cadherin expression parallel with the marked decrease in the mesenchymal marker vimentin. Our results indicated that low-dose genistein (<15 μmol/L) was able to induce the reversal of EMT in PCa cells, IA8-ARCaP, and LNCaP/HIF-1a. This phenomenon was in a concentration-dependent manner. Moreover, our data also indicated that the inhibitory effect of PCa cell invasion by low-dose genistein was in a time-dependent manner, and the threshold of concentration to inhibit cell invasion of IA8-ARCaP and LNCaP/HIF-1a was 0.2 to 15 μmol/L.

Up until now, no data have been published about the effect of genistein on EMT of cancer cells. Here, we first demonstrated a novel anticancer effect of genistein: the reversal of EMT. Our results suggested that treatment with low-dose genistein may be a potential strategy for the suppression of invasive growth through the reversal of EMT in cancer cells. Although the chemopreventive antiproliferative effects of genistein have been well documented in many types of human cancers<sup>[14–18]</sup>, our results provide evidence to suggest that they may also be potential agents for the treatment of metastatic PCa, which justifies the potential use of soybean foods as a practical chemopreventive approach for patients with PCa.

## Author contribution

Lin-lin ZHANG, Lei LI, and Da-lin HE designed re-



search; Lin-lin ZHANG, Xiang LI, Kai-jie WU, and Xin-yang WANG performed research; Da-peng WU and Jin-hai FAN contributed new analytical reagents and tools; Lin-lin ZHANG and Da-lin HE analyzed data; Lin-lin ZHANG and Da-lin HE wrote the paper.

## References

- Edwards BK, Brown ML, Wingo PA, Howe HL, Ward E, Ries LA, *et al.* Annual report to the nation on the status of cancer, 1975-2002, featuring population-based trends in cancer treatment. *J Natl Cancer Inst* 2005; 97: 1407-7.
- Bracarda S, de Cobelli O, Greco C, Prayer-Galetti T, Valdagni R, Gatta G, *et al.* Cancer of the prostate. *Crit Rev Oncol Hematol* 2005; 56: 379-96.
- Thiery JP. Epithelial-mesenchymal transitions in tumour progression. *Nat Rev Cancer* 2002; 2: 442-54.
- Xu J, Wang R, Xie ZH, Otero-Marrah V, Pathak S, Multani A, *et al.* Prostate cancer metastasis: role of the host microenvironment in promoting epithelial to mesenchymal transition and increased bone and adrenal gland metastasis. *Prostate* 2006; 66: 1664-73.
- Whitbread AK, Veveris-Lowe TL, Lawrence MG, Nicol DL, Clements JA. The role of kallikrein-related peptidases in prostate cancer: potential involvement in an epithelial to mesenchymal transition. *Biol Chem* 2006; 387: 707-14.
- Kasper S, Cookson MS. Mechanisms leading to the development of hormone-resistant prostate cancer. *Urol Clin North Am* 2006; 33: 201-10.
- Messina MJ, Persky V, Setchell KD, Barnes S. Soy intake and cancer risk: a review of the *in vitro* and *in vivo* data. *Nutr Cancer* 1994; 21: 113-31.
- Parnes HL, Figg WD. Chemoprevention in prostate cancer. *Pharmacotherapy* 2006; 26: 1533.
- Clinical development plan: genistein. *J Cell Biochem Suppl* 1996; 26: 114-26.
- Severson RK, Nomura AM, Grove JS, Stemmermann GN. A prospective study of demographics, diet, and prostate cancer among men of Japanese ancestry in Hawaii. *Cancer Res* 1989; 49: 1857-60.
- Schleicher RL, Lamartiniere CA, Zheng M, Zhang M. The inhibitory effect of genistein on the growth and metastasis of a transplantable rat accessory sex gland carcinoma. *Cancer Lett* 1999; 136: 195-201.
- Valachovicova T, Slivova V, Bergman H, Shuherk J, Sliva D. Soy isoflavones suppress invasiveness of breast cancer cells by the inhibition of NF-kappaB/AP-1-dependent and -independent pathways. *Int J Oncol* 2004; 25: 1389-95.
- Iishi H, Tatsuta M, Baba M, Yano H, Sakai N, Akedo H. Genistein attenuates peritoneal metastasis of azoxymethane-induced intestinal adenocarcinomas in Wistar rats. *Int J Cancer* 2000; 86: 416-20.
- Davis JN, Singh B, Bhuiyan M, Sarkar FH. Genistein-induced up-regulation of p21WAF1, downregulation of cyclin B, and induction of apoptosis in prostate cancer cells. *Nutr Cancer* 1998; 32: 123-31.
- Kyle E, Neckers L, Takimoto C, Curt G, Bergan R. Genistein-induced apoptosis of prostate cancer cells is preceded by a specific decrease in focal adhesion kinase activity. *Mol Pharmacol* 1997; 51: 193-200.
- Zhou JR, Gugger ET, Tanaka T, Guo Y, Blackburn GL, Clinton SK. Soybean phytochemicals inhibit the growth of transplantable human prostate carcinoma and tumor angiogenesis in mice. *J Nutr* 1999; 129: 1628-35.
- Santibanez JF, Navarro A, Martinez J. Genistein inhibits proliferation and *in vitro* invasive potential of human prostatic cancer cell lines. *Anticancer Res* 1997; 17: 1199-204.
- Davis JN, Muqim N, Bhuiyan M, Kucuk O, Pienta KJ, Sarkar FH. Inhibition of prostate specific antigen expression by genistein in prostate cancer cells. *Int J Oncol* 2000; 16: 1091-7.
- Crowell JA, Holmes CJ. Agent identification and preclinical testing. *Cancer Treat Res* 2001; 106: 1-30.
- Luo Y, He DL, Ning L, Shen SL, Li L, Li X. Hypoxia-inducible factor-1alpha induces the epithelial-mesenchymal transition of human prostate cancer cells. *Chin Med J (Engl)* 2006; 119: 713-8.
- Luo Y, He DL, Ning L, Shen SL, Li L, Li X, *et al.* Over-expression of hypoxia-inducible factor-1alpha increases the invasive potency of LNCaP cells *in vitro*. *BJU Int* 2006; 98: 1315-9.
- Zhou HY, Chang SM, Chen BQ, Wang Y, Zhang H, Kao C, *et al.* Androgen-repressed phenotype in human prostate cancer. *Proc Natl Acad Sci USA* 1996; 93: 15152-7.
- Jiang YG, Luo Y, He DL, Li X, Zhang LL, Peng T, *et al.* Role of Wnt/beta-catenin signaling pathway in epithelial-mesenchymal transition of human prostate cancer induced by hypoxia-inducible factor-1alpha. *Int J Urol* 2007; 14: 1034-9.
- Romijn JC, Verkoelen CF, Schroeder FH. Application of the MTT assay to human prostate cancer cell lines *in vitro*: establishment of test conditions and assessment of hormone-stimulated growth and drug-induced cytostatic and cytotoxic effects. *Prostate* 1988; 12: 99-110.
- Hempstock J, Kavanagh JP, George NJ. Growth inhibition of prostate cell lines *in vitro* by phyto-oestrogens. *Br J Urol* 1998; 82: 560-3.
- Bhatia N, Agarwal R. Detrimental effect of cancer preventive phytochemicals silymarin, genistein and epigallocatechin 3-gallate on epigenetic events in human prostate carcinoma DU145 cells. *Prostate* 2001; 46: 98-107.
- Peterson G, Barnes S. Genistein and biochanin A inhibit the growth of human prostate cancer cells but not epidermal growth factor receptor tyrosine autophosphorylation. *Prostate* 1993; 22: 335-45.
- Onozawa M, Fukuda K, Ohtani M, Akaza H, Sugimura T, Wakabayashi K. Effects of soybean isoflavones on cell growth and apoptosis of the human prostatic cancer cell line LNCaP. *Jpn J Clin Oncol* 1998; 28: 360-3.
- Geller J, Sionit L, Partido C, Li L, Tan X, Youngkin T, *et al.* Genistein inhibits the growth of human-patient BPH and prostate cancer in histoculture. *Prostate* 1998; 34: 75-9.
- Adlercreutz H, Markkanen H, Watanabe S. Plasma concentrations of phyto-oestrogens in Japanese men. *Lancet* 1993; 342: 1209-10.