

Full-length article

Artificial pulmonary surfactant as a carrier for intratracheally instilled insulin¹Ying JI, Chen LIU, Yuan-ying PEI²

Department of Pharmaceutics, School of Pharmacy, Fudan University, Shanghai 200032, China

Key words

pulmonary; drug delivery system; pharmacokinetics; pharmacodynamics; hypoglycemic effect; minimal surface tension; absorption; pulmonary edema index; histopathology examination

¹ Project supported by the Ministry of Education Grant of China (2001) and a grant from the Department of Public Health of Shanghai (2001).² Correspondence to Prof Yuan-ying PEI.
Phn/Fax 86-21-5423-7186.
E-mail yypei@shmu.edu.cn

Received 2006-06-15

Accepted 2006-09-30

doi: 10.1111/j.1745-7254.2007.00513.x

Abstract

Aim: The relative bioavailabilities and effects on lung injury alleviation of 4 insulin-artificial pulmonary surfactant (INS-APS) preparations were studied in normal rats. The relationship between the minimal surface tension (γ_{\min}) of INS-APS and the absorption of insulin was also investigated. **Methods:** Four formulations of APS [1,2-dipalmitoyl-sn-glycero-3-phosphocholine (DPPC)/lecithin/palmitic acid (PA), DPPC/1-hexadecanol (Hex)/tyloxapol (Tyl), DPPC/L- α -phosphatidyl-DL-glycerol sodium salt (PG), DPPC/Tyl] were prepared by thin-film sonication method and direct sonication. The γ_{\min} of 4 APS dispersions was examined with and without INS by pulsating with a bubble surface tensiometer. *In vivo* experiments were performed in which serum glucose change and the insulin level were measured by an enzymatic glucose reagent kit and a radioimmunity assay kit after IT to rats. The reduction in lung injury by INS-APS following 7 d of consecutive administration was evaluated by the pulmonary edema index (the weight ratio of wet lung to dry lung) and histopathology examination. **Results:** The γ_{\min} of all APS dispersions were below 10 mN/m. There was no significant difference ($P > 0.05$) between the γ_{\min} of APS and the corresponding INS-APS. *In vivo* experiments showed a significant glucose level decrease and insulin absorption increase ($P < 0.05$) in the presence of APS, compared to the insulin solution alone. From the results, we found that the pulmonary edema index values of all the INS-APS groups were significant lower ($P < 0.05$) than that of the insulin solution group, and there were no significant differences ($P > 0.05$) between INS/DPPC/Tyl, INS/DPPC/PG, and the control group. The pulmonary edema indices and histopathological observation indicated that INS-APS could alleviate lung injury. **Conclusion:** The most potent hypoglycemic effect and insulin absorption increase in this study were obtained with INS/DPPC/Tyl. According to the results, there was a linear correlation between the γ_{\min} and relative bioavailability of INS-APS, suggesting a possible effect of the γ_{\min} of carriers on the *in vivo* absorption of insulin. APS, DPPC/Tyl, and DPPC/PG dispersions might be the most efficient insulin pulmonary delivery carriers in achieving a lower γ_{\min} , enhancing insulin absorption, and decreasing lung injury.

Introduction

There has been a great volume of research on the pulmonary delivery of peptides and proteins^[1]. However, bioavailability remains problematic and must be improved as subsequent injury to the lungs still occurs. Natural pulmonary

surfactant (PS) is able to disperse on the surface of alveolar cells as a thin film, consisting mainly of phospholipids and surfactant proteins. PS therapy has already been applied to pulmonary diseases such as respiratory distress syndrome (RDS)^[2] and asthma^[3] with some success. Because of its more homogenous and peripheral lung distribution than other

liquids and its inherent therapeutic potential, PS has been proposed to be used as a carrier for antibiotics^[4], corticosteroids, and recombinant adenoviral vectors^[5]. From a formulation standpoint, the lipid-based drug delivery system should be compatible with lung tissue, and not readily elicit immunogenic reactions, since they resemble physiological PS in components. It is expected that PS could also be employed as a protein and peptide carrier in pulmonary delivery.

Based on previous studies^[6,7], we prepared 4 formulations of artificial pulmonary surfactants (APS) as carriers of insulin (INS) as a model drug. The *in vivo* bioavailability of INS-APS and the correlation between minimal surface tension and the bioavailability of INS-APS were investigated after intratracheal instillation (IT) in normal rats. Injury to the lungs of normal rats after 7 d of consecutive administration was primarily investigated.

Materials and methods

Materials 1,2-dipalmitoyl-sn-glycero-3-phosphocholine (DPPC, Sigma, St Louis, MO, USA); L- α -phosphatidyl-DL-glycerol sodium salt (PG, Sigma, USA); tyloxapol (Tyl, Sigma, USA); 1-hexadecanol (Hex, Acros Organics, Pittsburgh, PA, USA); lecithin (Shanghai Boao Bioscience Co, Shanghai, China); palmitic acid (PA, Sinopharm Group Chemical Reagent Co, Shanghai, China); INS powder (Jiangsu Wanbang Biochemical & Pharmaceutical Co, Xuzhou, China); enzymatic glucose reagent kit (Shanghai Shenfeng Biochemistry Reagent Factory, Shanghai, China); Radioimmunoassays (RIA) kit (Beijing Furui Bioengineering Co, Beijing, China). Other chemicals were of Analytical reagents (AR). ZX-98 rotavapor (Shanghai Organic Chemical Institute, Shanghai, China); KPS-2 supersonic microniser (Shanghai Kaibo Supersonic Apparatus Factory, Shanghai, China); particle size system (Nicomp 380/ZLS, Santa Barbara, CA, USA); pulsating bubble surface tensiometer (modified based on Enhorning's method^[6,8]); UV-754 ultraviolet spectrophotometer (Shanghai Analytical Instrument General Factory, Shanghai, China); photomicroscope (Olympus BX-50, Tokyo, Japan); and Wistar rats (bred by the laboratory animal department of Fudan University, Shanghai, China). INS-APS and blank DPPC dispersions employed in this experiment were produced within our laboratory.

Preparation of INS-APS The composition of 4 APS dispersions were as follows: DPPC/lecithin/PA (6:3:1, *w/w/w*), DPPC/Hex/Tyl (13.5:1.5:1, *w/w/w*), DPPC/PG (3:1, *w/w*), DPPC/Tyl (13.5:1, *w/w*). DPPC/lecithin/PA, DPPC/Hex/Tyl and DPPC/PG were prepared by a thin-film sonication method.

Various lipids and additives dissolved in ethanol/chloroform were mixed; the organic phase was evaporated by rotavapor and the residual solvent was removed in a vacuum overnight. Lipids and additives formed a thin film on the flask wall and were hydrated in sterile saline at 50 °C for 2 h, then sonicated for 5 min for further dispersing. DPPC/Tyl was prepared by a direct sonication method. DPPC and Tyl were mixed in sterile saline and sonicated for 5 min^[9]. The resulting APS dispersions were filtrated through a 0.45 μ m filter. INS powder (28 IU/mg) was solubilized with 1 mL of 0.1 mol/L HCl; a sterile saline solution was added to make the final INS concentration of 4 IU/mL.

An aliquot of the INS solution was added to each of the APS dispersions and sonicated for 2 min. Final preparations of INS-APS (INS/DPPC/lecithin/PA, INS/DPPC/Hex/Tyl, INS/DPPC/PG, INS/DPPC/Tyl) dispersed in saline contained 13.5 mg/mL DPPC and 4 IU/mL INS.

Measurement of particle size The particle sizes of all INS-APS were determined with a laser diffraction particle size analysis system.

Measurement of minimal surface tension (γ_{\min}) The minimal surface tension of APS and INS-APS was determined by a pulsating bubble surface tensiometer (modified based on Enhorning's method^[6,8]). Each dispersion (5 μ L) was added to the gas-liquid interface of the air bubble. According to the shape of the bubble during pulsating cycles at the temperature of 37 °C, the γ_{\min} was calculated according to the Bashforth-Adams formulation^[10].

Pharmacodynamic and pharmacokinetic experiments

INS preparations administration In all of the *in vivo* experiments, healthy Wistar rats [body weight (BW) 200 \pm 30 g] had free access to food and water. Before the experiment, the animals fasted overnight (14 h). Forty-two male rats were divided into 7 groups randomly as follows: (1) subcutaneous injection (sc) INS solution (1 IU/kg); (2) IT INS solution (4 IU/kg); (3) IT INS/DPPC/lecithin/PA (4 IU/kg); (4) IT INS/DPPC/Hex/Tyl (4 IU/kg); (5) IT INS/DPPC/PG (4 IU/kg); (6) IT INS/DPPC/Tyl (4 IU/kg); and (7) IT blank DPPC dispersion. The dose of PA was about 0.2 mL INS-APS per rat and the dose of sc was about 0.2 mL INS solution per rat.

All of the rats were anaesthetized with ether and attached to a board with an elevation of 80° to the horizontal plane. Rat tongues were drawn out and each INS formulation was instilled intratracheally into the lungs through a syringe while the rats were inspiring. The rats were maintained for 30 s on the board after drug delivery and then the board was rotated to a 30° horizontal elevation for 1 min. 0.4 mL of blood was taken from the tail vein shortly before drug administration for a baseline sample and subsequently

15, 30, 60, 90, 120, 180, 240, 300, and 360 min after dosing to determine respective serum glucose and INS levels. The experimental design of the animal study in this paper was approved by the appropriate ethical committee on animal studies at Fudan University (China).

Calculation of the area above the curve (AAC) and the area under the curve (AUC) of INS formulations Blood samples were centrifuged at 3000 r/min for 10 min at 4 °C, and the serum glucose level was determined immediately according to the glucose oxidase method. The serum INS level was quantitated by a double-antibody radioimmunoassay using a commercial RIA kit. The percentage of serum glucose change and the serum INS level were plotted as a function of time. The area above the percentage serum glucose change versus time curve (AAC) and the area under the serum INS level versus time curve (AUC) were calculated by the linear trapezoidal method. The relative pharmacological bioavailability (f)^[11] and relative bioavailability (F)^[12] were calculated by the following formulations:

$$f = \frac{AAC_{it} \times Dose_{sc}}{AAC_{sc} \times Dose_{it}}, \quad F = \frac{AUC_{it} \times Dose_{sc}}{AUC_{sc} \times Dose_{it}}$$

Pilot study on lung injury in rats In lung injury experiments, healthy Wistar rats (BW 200±30 g) had free access to food and water. Thirty-six male rats were divided into 6 groups randomly as follows: (1) IT INS solution (4 IU/kg); (2) IT INS/DPPC/lecithin/PA (4 IU/kg); (3) IT INS/DPPC/Hex/Tyl (4 IU/kg); (4) IT INS/DPPC/PG (4 IU/kg); (5) IT INS/DPPC/Tyl (4 IU/kg); and (6) control group (normal rats).

Groups 1, 2, 3, 4, and 5 were consecutively administered INS preparations for 7 d (about 0.2 mL INS-APS per rat) and once a day as per the above mentioned method. The control group (normal rats) was fed with lab chow and water without any administration for 7 d. All of the rats were sacrificed on d 7. The changes of the pulmonary edema index and histopathology of lungs were investigated to evaluate the severity of injury to the lungs.

Pulmonary edema index All of the rats were sacrificed on d 7. The whole lungs were removed and dissected. The right-sided lungs were weighed both before drying (W_w) and after drying (W_d) at 60 °C. The pulmonary edema index was calculated by the following equation: Index= W_w/W_d ^[12].

Histopathology observation The left-sided lungs were fixed in 10% formalin, dehydrated, embedded in paraffin, sectioned using a microtome, and stained using hematoxylin-eosin. The lung slices were observed under a photomicroscope and photographic records were taken.

Statistical analysis Data were expressed as mean±SD. Statistical significant differences were evaluated with an

analysis of ANOVA in the groups and Bonferroni (Dunnett) t -test between 2 groups.

Results

Appearance and particle size of INS-APS All APS dispersions and INS-APS were dispersed in sterile saline homogeneously and had emulsive lights. The appearance of APS and INS-APS particles were circular and smooth. The particle sizes of INS-APS (INS/DPPC/lecithin/PA, INS/DPPC/Hex/Tyl, and INS/DPPC/PG, INS/DPPC/Tyl) were 395.55±17.14, 439.78±46.84, 460.63±45.18, and 390.73±35.53 nm, respectively. There was no significant difference ($P>0.05$) between them.

γ_{min} of various dispersions The γ_{min} of APS and INS-APS is shown in Table 1. The γ_{min} value of APS and INS-APS decreased to 10 mN/m compared to the surface tension of H₂O (72 mN/m) and the γ_{min} of DPPC (32 mN/m) and INS solution (64.48 mN/m). There were significant differences ($P<0.05$) in the γ_{min} of 4 APS dispersions and in the γ_{min} of 4 INS-APS, but no significant difference ($P>0.05$) in the γ_{min} between all APS and corresponding INS-APS. The lowest γ_{min} of APS and INS-APS were obtained by DPPC/Tyl and INS/DPPC/Tyl. The relative potency of the γ_{min} of 4 INS-APS was $\gamma_{INS/DPPC/Tyl} < \gamma_{INS/DPPC/PG} < \gamma_{INS/DPPC/Hex/Tyl} < \gamma_{INS/DPPC/lecithin/PA}$. The same trend of the γ_{min} was observed in APS dispersions.

Table 1. Minimal surface tension (γ_{min} , mN/m) of APS and INS-APS (Mean±SD, $n=6$). ^a $P>0.05$ vs corresponding INS-APS; ^b $P<0.05$ vs other APS or INS-APS Control.

Ingredients of APS	APS (mN/m)	INS-APS (mN/m)
DPPC/lecithin/PA	9.50±0.94 ^{ab}	9.10±0.77 ^b
DPPC/Hex/Tyl	4.02±0.28 ^a	3.38±0.73
DPPC/PG	1.88±0.40 ^a	2.67±0.31
DPPC/Tyl	1.32±0.19 ^a	1.87±0.12

Hypoglycemic effects and plasma INS levels after pulmonary delivery of INS preparations As illustrated in Figure 1, the maximum blood glucose reduction after IT of INS preparations at a dose of 4 IU/kg was more than 60%. The values of the AAC of the 4 INS-APS (14147.16~19876.04) were significantly higher ($P<0.05$) than the value of the INS solution (13351.13). The optimal hypoglycemic effect of 4 INS-APS was obtained with INS/DPPC/Tyl, which generated a maximum glucose reduction of 80% and a maximum AAC of

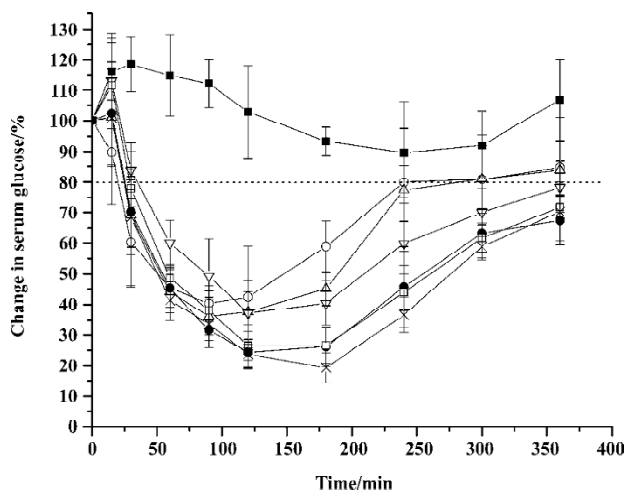


Figure 1. Serum glucose-time profiles following subcutaneous injection of 1 IU/kg insulin solution (O), intratracheal instillation of 4 IU/kg insulin solution (Δ), 4 IU/kg INS/DPPC/lecithin/PA (▽), 4 IU/kg INS/DPPC/Hex/Tyl (●), 4 IU/kg INS/DPPC/PG (□), 4 IU/kg INS/DPPC/Tyl (×) and blank DPPC dispersion (■). Six male Wistar rats (200±30 g) per group.

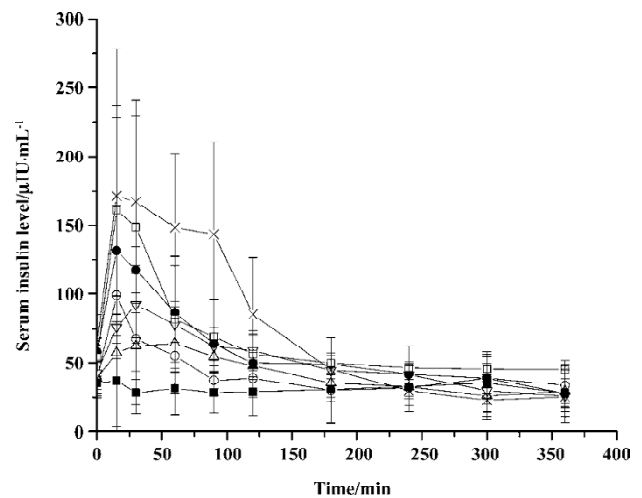


Figure 2. Serum insulin-time profiles following subcutaneous injection of 1 IU/kg insulin solution (O), intratracheal instillation of 4 IU/kg insulin solution (Δ), 4 IU/kg INS/DPPC/lecithin/PA (▽), 4 IU/kg INS/DPPC/Hex/Tyl (●), 4 IU/kg INS/DPPC/PG (□), 4 IU/kg INS/DPPC/Tyl (×) and blank DPPC dispersion (■). Six male Wistar rats (200±30 g) per group.

19876.04. The maximum glucose reduction of the remaining 3 INS-APS (INS/DPPC/lecithin/PA, INS/DPPC/Hex/Tyl, and INS/DPPC/PG) were 63%, 76%, and 74%, respectively. The AAC and relative pharmacological bioavailability (*f*) of the INS formulations are listed in Table 2. The AAC of INS/DPPC/Hex/Tyl, INS/DPPC/PG, and INS/DPPC/Tyl were significantly higher ($P<0.05$) than that of INS/DPPC/lecithin/PA. The relative pharmacological bioavailability followed the sequence: $f_{\text{INS/DPPC/Tyl}} > f_{\text{INS/DPPC/Hex/Tyl}} > f_{\text{INS/DPPC/PG}} > f_{\text{INS/DPPC/lecithin/PA}}$. The control group showed that DPPC dispersion alone did not induce any decrease in the glucose level.

Figure 2 shows the serum INS level after pulmonary administration. The serum INS level was enhanced after

administration of INS-APS. The highest serum INS level was obtained by 172 μIU/mL of INS/DPPC/Tyl at 15 min, which was slightly higher than the level of INS/DPPC/PG (161 μIU/mL), 1.3 times that of INS/DPPC/Hex/Tyl (131 μIU/mL), 1.8 times that of INS/DPPC/lecithin/PA (93 μIU/mL), and 2.7 times that of the INS solution (64 μIU/mL) after IT. The difference in the AUC of the INS formulations was similar to that of pharmacological bioavailability (Table 2). The value of the AUC of INS/DPPC/Tyl (27243.84±5628.883) was significantly higher ($P<0.05$) than the values of the other 3 INS-APS (15947.78~23097.94). The AUC and the relative bioavailability (*F*) of INS/DPPC/lecithin/PA were lowest of the 4 INS-APS. The relative bioavailability followed the sequence: $F_{\text{INS/DPPC/Tyl}} > F_{\text{INS/DPPC/PG}} > F_{\text{INS/DPPC/Hex/Tyl}} >$

Table 2. Relative pharmacological bioavailability and bioavailability of insulin formulations following intratracheal instillation to normal rat (Mean±SD, *n*=6). ^b $P<0.05$ vs 4 IU/kg insulin solution (it); ^c $P<0.05$ vs 4 IU/kg INS/DPPC/lecithin/PA (it).

Formula of administration	AAC _{0-360 min} (%·min)	<i>f</i> (%)	AUC _{0-360 min} (min·μIU/mL)	<i>F</i> (%)
Insulin solution (1 IU/kg, sc)	12344.31±1186.65	100	14854.07±2402.7	100
Insulin solution (4 IU/kg, it)	13352.13±1335.97	27.04	15947.78±1550.239	26.84
INS/DPPC/lecithin/PA (4 IU/kg, it)	14147.16±1363.21 ^b	28.65	18109.14±1323.103 ^b	30.48
INS/DPPC/Hex/Tyl (4 IU/kg, it)	18603.21±1185.91 ^{bc}	37.67	21281.33±2563.129 ^b	35.82
INS/DPPC/PG (4 IU/kg, it)	17916.86±513.97 ^{bc}	36.29	23098.94±3608.418 ^b	38.88
INS/DPPC/Tyl (4 IU/kg, it)	19879.04±1112.22 ^{bc}	40.25	27243.84±5628.883 ^b	45.86
DPPC dispersion (it)	0		11288.81±6499.287	

$F_{\text{INS/DPPC/lecithin/PA}}$. DPPC dispersion alone seemed to have no effect on the serum INS level.

The duration of glucose levels maintained at a level below 80% after pulmonary delivery of INS were summarized. This was provided as a means of evaluating the prolonged hypoglycemic effects of the INS preparations^[13]. As displayed in Figure 1, the duration of IT of INS-APS were all above 6 h, which was longer than the hypoglycemic effect of an INS solution sc injection (4 h) and IT (5 h).

Correlation between γ_{min} and bioavailability of INS-APS

The correlation coefficients between the f , F , and γ_{min} values of the INS preparation were -0.7421 and -0.7245, whereas the correlation coefficients between the f , F , and γ_{min} of INS-APS were -0.9688 and -0.8632, respectively (Figure 3).

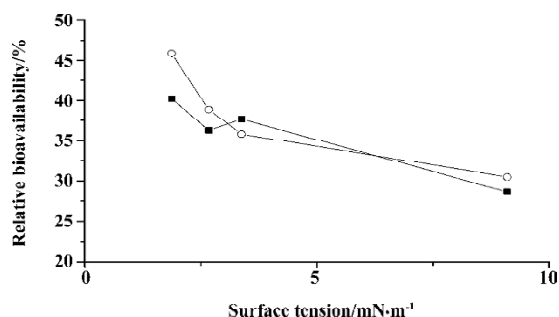


Figure 3. Relationship between surface tension of INS-APS and relative bioavailability following INS-APS administration: pharmaceutical relative bioavailability (■), relative bioavailability (○).

Pulmonary edema index After 7 d of consecutive administration, a significant difference ($P<0.05$) in the pulmonary edema index of the 6 groups was observed (Table 3). The index for the INS solution group was significantly higher ($P<0.05$) than that of the control group, and the indices of the INS-APS groups were significantly lower than that of

Table 3. Wet/dry lung weight ratio (W_w/W_D) following intratracheal instillation of 4 IU/kg INS preparations for 7 consecutive days (Mean±SD, $n=6$). ^b $P<0.05$ vs Control group. ^c $P<0.05$ vs 4 IU/kg insulin solution.

Group	W_w/W_D
Control (Normal)	4.55±0.18 ^e
4 IU/kg insulin solution	5.47±0.12 ^b
4 IU/kg INS/DPPC/lecithin/PA	5.06±0.15 ^{bc}
4 IU/kg INS/DPPC/Hex/Tyl	5.04±0.15 ^{bc}
4 IU/kg INS/DPPC/PG	4.84±0.22 ^e
4 IU/kg INS/DPPC/Tyl	4.89±0.23 ^e

the INS solution group. This indicated that the INS-APS groups could alleviate lung injury while the INS solution conferred marked injury to the lung tissue following 7 d of consecutive administration. The pulmonary edema indices of INS/DPPC/Tyl and INS/DPPC/PG showed no significant difference compared with the control group ($P>0.05$).

Histopathological examination of lungs

As shown in Figure 3, following IT for 7 consecutive days, thickened alveolar septa were clearly observed in the lung slices in rats administrated with INS solution (Figure 4B), as compared to the control group (Figure 4A). Diffused disruption of alveolar capillaries with leakage of red blood cells into the alveolar lumina and lung interstitium was generally noted in the INS solution group. Prominent inflammatory cell infiltration and lung vascular epithelial degeneration were also observed in this group. The pathological changes became less severe in the slices after INS-APS administration (Figure 4C–4F). The width of alveolar septa was slighter broader than the control group. Disruption of the alveolar wall and leakage of red blood cells were not evident. There was only very slight visible epithelial degeneration and no other alveolar structural changes observed in the INS-APS groups, as compared with the control groups. Inflammatory cell infiltration was still found in some samples although this was only negligible.

Discussion

The natural PS is a complex mixture produced by alveolar type II cells in lung. It can stabilize lungs for efficient respiration and prevent or treat RDS by reducing alveolar surface tension and increasing lung compliance. Due to the small diameter of peripheral airways, fluid with a high surface tension requires high pressure delivery for distribution. Studies have shown that PS is superior to saline in distributing a radioactive colloid within healthy lungs, and is more homogeneous and peripheral in lungs than saline^[14]. PS carry out this function by forming a film at the air-liquid interface. This film mainly consists of lipids and surfactant proteins. The hydrophilic polar heads of amphiphilic phospholipid molecules remain in water while the fatty acids turn towards air. The phospholipids molecules interluding in water affect the affinity in molecules. Due to this film, surface tension is lowered and undergoes considerable changes during the respiratory cycle^[15].

Of the many components of natural PS, DPPC appears to have the necessary thermodynamic properties to reduce surface tension effectively. However the high cohesive energy of compressed monolayers of disaturated long-chain fatty acids, combined with significant hydration of the headgroups, inhibits the rapid spreading of DPPC molecules

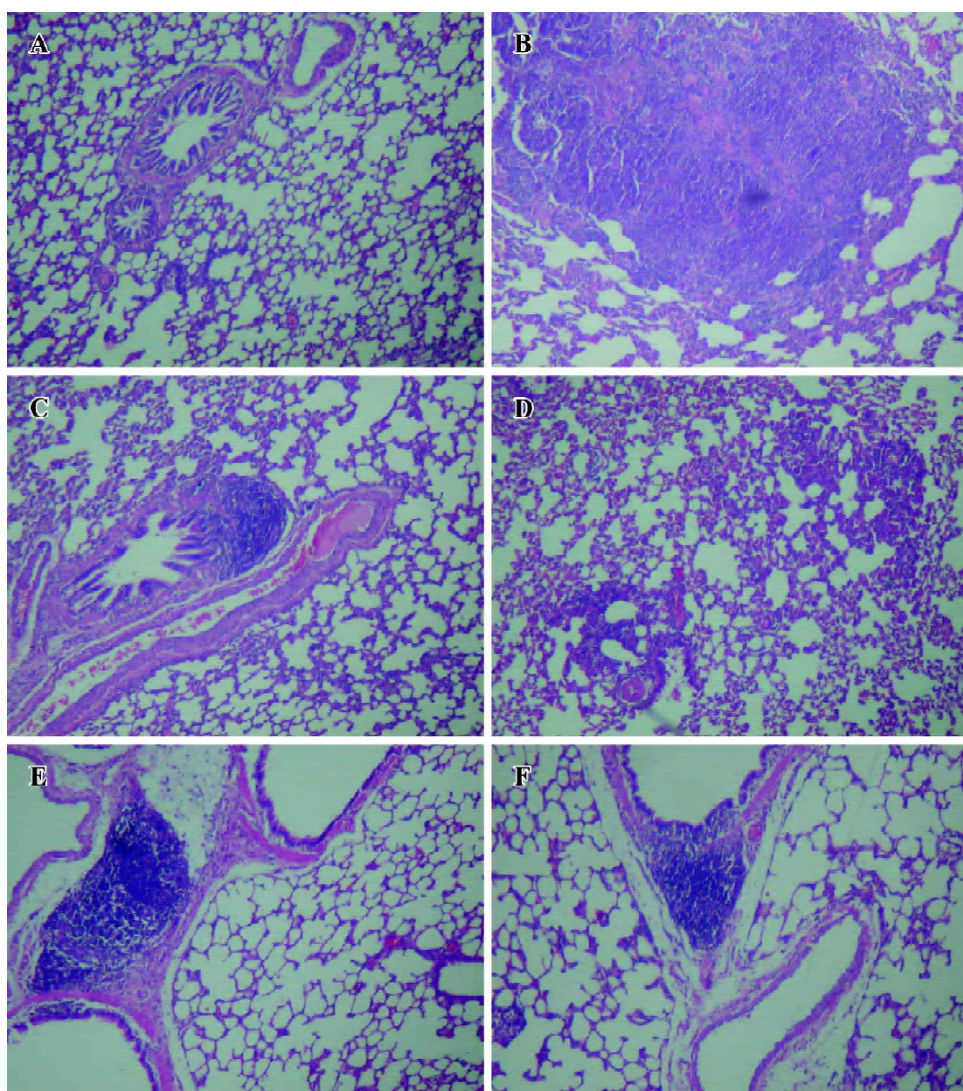


Figure 4. Histopathological examination of rat lung slices following a 7 d consecutive administration ($\times 40$). Haematoxylin-eosin. (A) Section from lungs of normal rats with no treatment. (B) Section from lungs of normal rats following intratracheal instillation of 4 IU/kg insulin solution. (C) Section from lungs of normal rats following intratracheal instillation of 4 IU/kg INS/DPPC/lcithin/PA. (D) Section from lungs of normal rats following intratracheal instillation of 4 IU/kg INS/DPPC/Hex/Tyl. (E) Section from lungs of normal rats following intratracheal instillation of 4 IU/kg INS/DPPC/PG. (F) Section from lungs of normal rats following intratracheal instillation of 4 IU/kg INS/DPPC/Tyl. Six male Wistar rats (200 ± 30 g) per group.

in an air/liquid interface. Therefore, the synergistic effect of other lipids are required to reduce the cohesion of DPPC in lipid mixture, such as PG, cholesterol and free PA, and of several lung specific proteins^[16]. Most research on APS have documented a potential for antigenicity due to the presence of a foreign protein^[17,18]. In this paper, DPPC was used as the key ingredient and other components were employed to prepare APS dispersions. It was shown that APS could decrease the surface tension at the air/liquid interface significantly and also enhance INS absorption with resulting alleviation of lung injury.

This experiment showed that the γ_{\min} value of the 4 INS-APS were all lower than DPPC dispersion alone. DPPC and PG are generally considered as components of PS; in this study they were employed as 1 formulation of APS. Lecithin contains unsaturated fatty acid residues which probably

enhance the fluidity of the DPPC films^[16]; furthermore, the addition of PA often makes the dispersion more homogeneous^[19]. DPPC/lcithin/PA was designed and added to INS. In the DPPC/Hex/Tyl dispersion, Hex acts as a spreading agent and Tyl as a dispersion agent^[20]. So DPPC/Hex/Tyl and DPPC/Tyl were prepared as formulations of APS. The difference of the γ_{\min} between DPPC/Hex/Tyl and DPPC/Tyl requires further research. With intratracheally instilled INS preparation, the serum glucose level of the INS-APS groups was clearly lower than that of the INS solution group. In addition, the duration of the hypoglycemic effect of the INS-APS groups was significantly longer than that of the INS solution group. The lowest γ_{\min} value and the largest hypoglycemic effect were obtained by the INS/DPPC/Tyl preparation. The relative pharmacological bioavailabilities of INS/DPPC/Hex/Tyl, INS/DPPC/PG, and INS/DPPC/Tyl

were higher than INS/DPPC/lecithin/PA, and similar trends were noted for the relative bioavailability of INS-APS. The correlation between γ_{\min} and f , and F suggested that the decrease of the γ_{\min} values of APS and INS-APS directly affected f and F . It was also revealed that the *in vivo* hypoglycemic effect could be predicted with the γ_{\min} values of INS-APS. The mechanism whereby INS absorption was enhanced is believed to be via an APS-mediated decrease in the γ_{\min} of the gas-liquid interface in alveolar tissue. This property appears to increase the facility and affect spreading, which in return increases the absorption area and produces greater INS absorption with APS.

In comparison to the pulmonary edema index, it was concluded that INS-APS could decrease lung injury compared with the INS solution following 7 d of consecutive IT. The lower index was obtained by INS/DPPC/PG and INS/DPPC/Tyl, which might contribute to the lower γ_{\min} value of the 2 INS-APS. Combining the results of the pulmonary edema index and histopathology examination, it was suggested that the pulmonary delivery of INS-APS might reduce the severity of any lung injury during administration and would thus be more appropriate for pulmonary delivery than the INS solution.

In summary, DPPC/Hex/Tyl, DPPC/PG, and DPPC/Tyl, with their low γ_{\min} , appeared to be effective absorption enhancers and significantly decreased lung injury. INS/DPPC/Tyl and INS/DPPC/PG in this study were shown to be efficient INS pulmonary delivery carriers with several advantages over drug preparations current utilized clinically.

Acknowledgements

We thank Dr Zhi-qiang JIANG and Prof Yuan-ming MA for their suggestions.

References

- 1 Agu RU, Ugwoke MI, Armand M, Kinget R, Verbeke N. The lung as a route for systemic delivery of therapeutic proteins and peptides. *Respir Res* 2001; 2: 198–209.
- 2 Merrill JD, Ballard RA. Pulmonary surfactant for neonatal respiratory disorders. *Curr Opin Pediatr* 2003; 15: 149–54.
- 3 Erpenbeck VJ, Hagenberg A, Dulkys Y, Elsner D, Balder R, Krentel H, *et al*. Natural porcine surfactant augments airway inflammation after allergen challenge in patients with asthma. *Am J Respir Crit Care Med* 2004; 169: 578–86.
- 4 Van't Veen A, Gommers D, Mouton JW, Kluytmans JA, Krijt EJ, Lachmann B. Exogenous pulmonary surfactant as a drug delivering agent: influence of antibiotics on surfactant activity. *Br J Pharmacol* 1996; 118: 593–8.
- 5 Katkin JP, Husser RC, Langston C, Welty SE. Exogenous surfactant enhances the delivery of recombinant adenoviral vectors to the lung. *Hum Gene Ther* 1997; 8: 171–6.
- 6 Jiang ZQ, Sun GM, Ma YM. Artificial reconstituted pulmonary surfactant in prevention and treatment of respiratory distress syndrome in neonates. *Acta Pharmacol Sin* 1997; 18:182–4.
- 7 Mitra R, Pezron I, Li Y, Mitra AK. Enhanced pulmonary delivery of insulin by lung lavage fluid and phospholipids. *Int J Pharm* 2001; 217: 25–31.
- 8 Enhorning G. Pulsating bubble technique for evaluating pulmonary surfactant. *J Appl Physiol* 1977; 43: 198–203.
- 9 Ji Y, Pei YY. Primary study of artificial pulmonary surfactant as carrier of insulin pulmonary delivery. *Chin Pharm J* 2006; 41: 766–8.
- 10 Paddy JF. Surface tension. Part III. Tables relating the size and shape of liquid drops to the surface tension. In Matijevic E, editor. *Surface and colloid science*. New York: Wiley-Interscience; 1969. p151–97.
- 11 Pan Y, Li YJ, Zhao HY, Zheng JM, Xu H, Wei G, *et al*. Bioadhesive polysaccharide in protein delivery system: chitosan nanoparticles improve the intestinal absorption of insulin *in vivo*. *Int J Pharm* 2002; 249: 139–47.
- 12 Lu J, Ji Y, Jiang ZQ. Study on the bioavailability and initial investigation on the rat following pulmonary delivery of insulin lipid suspension. *Chin J Biochem Pharm* 2002; 23: 271–4.
- 13 Zhang Q, Shen ZC, Tsuneji N. Prolonged hypoglycemic effect of insulin-loaded polybutylcyanoacrylate nanoparticles after pulmonary administration to normal rats. *Int J Pharm* 2001; 218: 75–80.
- 14 Kharasch VS, Sweeney TD, Fredberg J, Lehr J, Damokosh AI, Avery ME, *et al*. Pulmonary surfactant as a vehicle for intratracheal delivery of technetium sulfur colloid and pentamidine in hamster lungs. *Am Rev Respir Dis* 1991; 144: 909–13.
- 15 Enhorning G. Pulmonary surfactant function studied with the pulsating bubble surfactometer (PBS) and the capillary surfactometer (CS). *Comp Biochem Physiol A Mol Integr Physiol* 2001; 129: 221–6.
- 16 Tanaka Y, Takei T, Aiba T, Masuda K, Kiuchi A, Fujiwara T. Development of synthetic lung surfactants. *J Lipid Res* 1986; 27: 475–85.
- 17 Latallo JFK, Chen CL, Eichman J, Bielinska AU, Baker JR. Enhancement of endrimer-mediated transfection using synthetic lung surfactant exosurf neonatal *in vitro*. *Biochem Biophys Res Commun* 1999; 264: 253–61.
- 18 Lewis JF, Brackenbury A. Role of exogenous surfactant in acute lung damage. *Crit Care Med* 2003; 31: S324–8.
- 19 Palmblad M, Gustafsson M, Curstedt T, Johansson J, Schurch S. Surface activity and film formation from the surface associated material of artificial surfactant preparations. *Biochim Biophys Acta* 2001; 1510: 106–17.
- 20 Park SY, Hannemann RE, Franses EI. Dynamic tension and adsorption behavior of aqueous lung surfactants. *Colloids Surf B Biointerfaces* 1999; 15: 325–38.