

Intraepithelial sebaceous gland carcinoma with pagetoid spread presenting as marginal keratitis: a case report

Eye (2003) 17, 849. doi:10.1038/sj.eye.6700699

Correction to: *Eye* (2003) 17, 536–537.
doi:10.1038/sj.eye.6700387

Following the publication of the above Letter to the Journal, it has been identified that several authors were not named in the list of authors. The complete list of authors, their affiliation as well as the corrected correspondence details are reproduced below:

K Waheed, P Zaragoza, J Schofield and CA Jones

Kent County Ophthalmic and Aural Hospital
Church Street, Maidstone ME14 1DT, UK

Correspondence: K Waheed
Department of Ophthalmology
Queens Medical Centre University Hospital
Derby Road, Nottingham NG7 2UH, UK
Tel: +44 1159 249 924
Fax: +44 1159 709 749
E-mail: khalidwahe@aol.com

It has also been identified that the Letter was published with an incorrect figure. The correct Figure 1 is reproduced again.

P Zaragoza

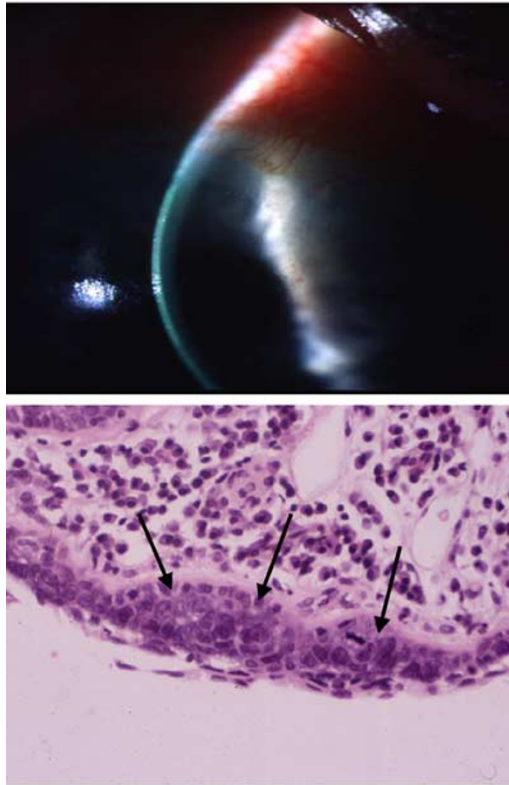


Figure 1 Top: Peripheral corneal vascularization and invasion of tumour cell nests mimicking infiltrates. Bottom: Histological section of the cornea demonstrating intraepithelial spread of tumour cells (arrows).