

# Overexpression of $\beta 2$ -microglobulin is associated with poor survival in patients with oral cavity squamous cell carcinoma and contributes to oral cancer cell migration and invasion

C-H Chen<sup>1,2</sup>, C-Y Su<sup>1,2</sup>, C-Y Chien<sup>\*1,2</sup>, C-C Huang<sup>2,3</sup>, H-C Chuang<sup>1,2</sup>, F-M Fang<sup>2,4</sup>, H-Y Huang<sup>2,3</sup>, C-M Chen<sup>2,3</sup> and S-J Chiou<sup>\*5</sup>

<sup>1</sup>Department of Otolaryngology, Chang Gung Memorial Hospital-Kaohsiung Medical Center, Chang Gung University College of Medicine, Kaohsiung, Taiwan; <sup>2</sup>Kaohsiung Chang Gung Head and Neck Oncology Group, Chang Gung Memorial Hospital-Kaohsiung Medical Center, Kaohsiung, Taiwan; <sup>3</sup>Department of Pathology, Chang Gung Memorial Hospital-Kaohsiung Medical Center, Chang Gung University College of Medicine, Kaohsiung, Taiwan; <sup>4</sup>Department of Radiation Oncology, Chang Gung Memorial Hospital-Kaohsiung Medical Center, Chang Gung University College of Medicine, Kaohsiung, Taiwan; <sup>5</sup>Department of Biochemistry, Faculty of Medicine, Kaohsiung Medical University, Kaohsiung, Taiwan

$\beta 2$ -Microglobulin ( $\beta 2M$ ), a component of MHC class I molecules, is believed to be associated with tumour status in various cancers. In this study, we examined the expression of  $\beta 2M$  at different malignant stages of oral cavity squamous cell carcinoma (OCSCC). To determine the possible correlation between  $\beta 2M$  expression and various clinical characteristics, 256 samples from patients with OCSCC were evaluated by immunohistochemical staining. Strong  $\beta 2M$  expression was significantly correlated with a relatively advanced tumour stage ( $P < 0.001$ ), positive nodal status ( $P < 0.001$ ), and TNM stage ( $P < 0.001$ ). The cumulative 5-year survival rate was significantly correlated with a relatively advanced tumour stage ( $P < 0.001$ ), positive nodal status ( $P < 0.001$ ), TNM stage ( $P < 0.001$ ), and strong expression of  $\beta 2M$  ( $P < 0.001$ ). Thus, elevated  $\beta 2M$  expression is an indicator of poor survival ( $P < 0.001$ ). In addition, we extended our analysis of  $\beta 2M$  expression to the FaDu and SCC25 oral cancer cell lines.  $\beta 2$ -Microglobulin expression was positively correlated with cell migration and invasion in  $\beta 2M$ -overexpressing transfectants in Transwell chambers. The suppression of  $\beta 2M$  expression using small interfering RNA (siRNA) was sufficient to decrease cell migration and invasion *in vitro*. Taken together, our results suggest that  $\beta 2M$  expression in the tissues is associated with survival and may be involved in tumour progression and metastasis in OCSCC.

British Journal of Cancer (2008) 99, 1453–1461. doi:10.1038/sj.bjc.6604698 www.bjcancer.com

Published online 7 October 2008

© 2008 Cancer Research UK

**Keywords:**  $\beta 2$ -microglobulin; immunohistochemistry; invasion; migration; oral cavity squamous cell carcinoma

$\beta 2$ -Microglobulin ( $\beta 2M$ ), an 11.7-kDa polypeptide expressed on the surface of almost all cells in the body, forms complexes with major histocompatibility complex (MHC) class I molecules, which are believed to function in antigen presentation to cytotoxic (CD8+) T lymphocytes (Margalit *et al*, 2006).  $\beta 2$ -Microglobulin is present as a soluble protein at low levels in the serum, urine, and other bodily fluids under physiological conditions; however, its level is elevated in patients with kidney failure and certain malignancies, including solid and liquid tumours (Klein *et al*, 1996; Tsimberidou *et al*, 2008). The increased tissue/serum level of  $\beta 2M$  is associated with a high tumour burden and poor prognosis. Thus, the level of  $\beta 2M$  has become one of the most important

prognostic factors and predictors of survival in patients with certain cancers (Lee *et al*, 2000; Madjd *et al*, 2005; Tsimberidou *et al*, 2008). Numerous reports, however, have indicated that a rise in the level of  $\beta 2M$  does not necessarily indicate a poor prognosis, suggesting that the changes in  $\beta 2M$  expression differ between premalignant and malignant tumours (Mahrle *et al*, 1982; Korkolopoulou *et al*, 1996; Feenstra *et al*, 2000; Palmisano *et al*, 2001). The first studies of cancer cells with upregulated or downregulated  $\beta 2M$  expression were initiated two decades ago; however, to date, few articles have shown that a decrease in the cell surface concentration of  $\beta 2M$  is associated with a poor prognosis in malignant cases of oral cavity squamous cell carcinoma (OCSCC) (Prime *et al*, 1987; Feinmesser *et al*, 2004). Instead, prominent staining for  $\beta 2M$  in tumours is associated with an improved clinical outcome. Oral cavity squamous cell carcinoma is currently the most frequently detected head and neck cancer in Southeast Asia. In Taiwan, OCSCC is the fifth most common malignancy in men, although it is highly curable at an early stage (Lu *et al*, 2007). The identification of biomarkers for evaluating the progression of OCSCC is therefore urgent. The aim of this study was to investigate the clinicopathological significance of  $\beta 2M$  expression according to tumour status in patients with OCSCC.

\*Correspondence: Dr S-J Chiou, Department of Biochemistry, Faculty of Medicine, Kaohsiung Medical University, 100, Shih-Chuan 1st Road, Kaohsiung 80731, Taiwan; E-mail: sheanjaw@kmu.edu.tw or Dr C-Y Chien, Department of Otolaryngology, Chang Gung Memorial Hospital-Kaohsiung Medical Center, 123, Ta-Pei Road, Niao Sung Hsiang, Kaohsiung 83301, Taiwan; E-mail: cychien3965@adm.cgmh.org.tw  
Received 16 June 2008; revised 26 August 2008; accepted 9 September 2008; published online 7 October 2008

Using  $\beta 2M$ -overexpressing transfectants, we found a statistically significant correlation between elevated  $\beta 2M$  expression and oral cancer cell invasion and migration.

## MATERIALS AND METHODS

### Patients and tumour samples

The subjects included 256 patients without previous radiotherapy and/or chemotherapy who underwent primary surgical resection between October 1996 and August 2005 for the treatment of OCSCC. Clinicopathological information, including sex, age, primary tumour stage (T), nodal status (N), and tumor-node-metastasis (TNM) stage, was obtained from each patient's clinical records and pathologic reports. Tumor-node-metastasis status was assigned according to the 1997 American Joint Committee on Cancer staging system. Tumor-node-metastasis was defined as size or direct extent of the primary tumour (T, 1–4) that spreads to regional lymph nodes (N, 0–3) and develops distant metastasis (M, 0/1). This study was approved by the Medical Ethics and Human Clinical Trial Committee at Chang Gung Memorial Hospital, Taiwan. The study subjects included 17 women and 239 men with an average age of 50.9 years (range: 26–87). Thirty-nine of the patients were classified as T1, 55 as T2, 64 as T3, and 98 as T4. One hundred and fifty-three patients were classified as N0, 38 as N1, 48 as N2b, 13 as N2c, and 4 as N3. Thirty-four patients were classified as TNM stage I, 38 as stage II, 61 as stage III, and 123 as stage IV. The mean follow-up period was 49.3 months (range: 2–141).

### Antibodies and reagents

Polyclonal antibodies against human  $\beta 2M$  and HLA class I were purchased from Santa Cruz Biotechnology (Santa Cruz, CA, USA). Monoclonal antibodies against  $\beta$ -actin were obtained from Sigma (St Louis, MO, USA). Anti-HA antibodies were purchased from Roche Biochemicals (3F10; Indianapolis, IN, USA). Horseradish peroxidase (HRP)-conjugated anti-rabbit IgG, HRP-conjugated anti-mouse IgG, FITC-conjugated anti-rabbit IgG, and TRITC-conjugated anti-mouse IgG were purchased from Jackson ImmunoResearch laboratories (Bio/Can Scientific, Mississauga, ON, Canada). An HRP/Fab polymer conjugate kit and DAB were obtained from Zymed (PicTure™-Plus Kit; South San Francisco, CA, USA). SuperScript II Reverse Transcriptase and all PCR and cell transfection reagents were purchased from Invitrogen (Carlsbad, CA, USA). All cell culture-related reagents were purchased from Gibco-BRL (Grand Island, NY, USA).

### RNA extraction and semiquantitative reverse transcription-PCR

Tissue samples were frozen in liquid nitrogen and stored at  $-80^{\circ}\text{C}$  before RNA extraction. The tissues were homogenised using a Mixer Mill Homogenizer (Qiagen, Crawley, West Sussex, UK). Total RNA was extracted from the tissue samples using an RNeasy Mini Kit (Qiagen) according to the manufacturer's instructions. The total RNA (2  $\mu\text{g}$ ) was reverse-transcribed into cDNA using SuperScript II Reverse Transcriptase. Polymerase chain reaction was performed using 1  $\mu\text{l}$  of the reverse transcription product in a reaction volume of 25  $\mu\text{l}$ . The primers used were  $\beta 2M$  forward: 5'-CTCACGTCATCCAGCAGAGA-3' and reverse: 5'-CGGCAGGCAT ACTCATCTTT-3'; and *GAPDH* forward: 5'-GAAGGTGAAGGT CGGAGTC-3' and reverse: 5'-GAAGATGGTGATGGGATTTTC-3'. *GAPDH* was used as an internal control to normalise the relative amount of cDNA in each reaction. The number of cycles corresponding to the logarithmic phase of amplification for  $\beta 2M$  was determined before the start of our experiments. The PCR mixture contained 10 mM Tris-HCl (pH 8.3), 1.5 mM  $\text{MgCl}_2$ , 50 mM

KCl, 200 mM dNTPs, 2 mM each primer, and 1 U of Ex Taq Polymerase (Takara, Tokyo, Japan). The programme included 25 cycles at  $94^{\circ}\text{C}$  for 1 min,  $56^{\circ}\text{C}$  for 1 min, and  $72^{\circ}\text{C}$  for 2 min. The reverse transcription-PCR (RT-PCR) products were separated on 2% agarose gels and stained with  $0.5 \mu\text{g ml}^{-1}$  ethidium bromide. The  $\beta 2M$  product was 213 bp long.

### Immunoblot analysis

Immunoblotting was carried out according to standard procedures. For tissue protein extraction, samples were frozen and homogenised in lysis RIPA (radioimmunoprecipitation assay) buffer (50 mM Tris-HCl (pH 7.5), 150 mM NaCl, 1% NP-40, 0.5% Na-deoxycholate, and 0.1% SDS). The protein concentration in each sample was estimated by Bio-Rad protein assay (Hercules, CA, USA). Equal amounts of protein (50  $\mu\text{g}$ ) were electrophoresed on reducing 10% SDS-polyacrylamide gels and then transferred to polyvinylidene difluoride membranes. After blocking with TBS/5% bovine serum albumin (BSA), antibodies against  $\beta 2M$ , HA, and  $\beta$ -actin were incubated with the membranes at room temperature for 1 h. The resulting IgGs were detected using HRP-conjugated secondary antibodies and developed using Western Lighting reagent.

### Immunohistochemistry

Normal oral mucosa and adjacent non-tumour and tumour OCSCC tissue samples were selected by a pathologist on the basis of diagnosis and microscopic morphology. Normal oral mucosa and tumour tissues were fixed with 10% buffered formalin embedded in paraffin and decalcified in 10% EDTA solution. Representative blocks of the formalin-fixed, paraffin-embedded tissues were cut to 4 mm thickness and deparaffinised with xylene and rehydrated in a series of ethanol washes (100, 90, 80, and 70%). Slides were washed with phosphate-buffered saline (PBS) and treated with 3%  $\text{H}_2\text{O}_2$  for 30 min to block endogenous peroxidase activity. Next, the sections were microwaved in 10 mM citrate buffer, pH 6.0, to unmask the epitopes. After antigen retrieval, the sections were incubated with diluted anti- $\beta 2M$  (1:200) or anti-HLA-I antibody (1:200) for 1 h followed by PBS wash. Horseradish peroxidase/Fab polymer conjugate (PicTure™-Plus kit; Zymed) was then applied to the sections for 30 min followed by PBS wash. Finally, the sections were incubated with peroxidase substrate diaminobenzidine for 5 min to develop the signals. A negative control was run simultaneously by omitting the primary antibody. To grade for the intensity of  $\beta 2M$  immunostaining, the level of immunoreactivity in the immunostained tissues was evaluated independently by two pathologists who were blinded to the subjects' clinical information. To evaluate the expression of  $\beta 2M$ , the tissue sections were examined under a microscope at a magnification of  $\times 200$ . The intensity of staining was classified according to a four-level scale: –, no or faint staining in a few tumour cells; +, weak cytoplasmic staining in most tumour cells; ++, diffuse cytoplasmic staining in groups of tumour cells; and + + +, diffuse cytoplasmic staining in most of the tumour cells (Yagasaki *et al*, 2003). Levels – and + were defined as weak  $\beta 2M$  expression, whereas levels ++ and + + + were defined as strong expression. A sample was considered positive if 1–5% of the tumour cells showed positive staining as described (Mehta *et al*, 2008). Those samples in which positive staining were detected in over 50% of the tumour cells were considered strongly positive for  $\beta 2M$ .

### Construction of the human $\beta 2M$ plasmid

Two primers, 5'-ATGTCTCGCTCCGTGGCCTT-3' and 5'-TTA-CATGTCTCGATCCCCT-3', were used to amplify the  $\beta 2M$  cDNA from the SCC25, a cell line derived from OCSCC cDNA library.

SCC25 cells were homogenised using a Mixer Mill Homogenizer (Qiagen). Total RNA from SCC25 cells was extracted using the RNeasy Mini kit (Qiagen) according to the manufacturer's instructions. Total RNA ( $2 \mu\text{g}$ ) was reverse-transcribed into cDNA by SuperScript II reverse Transcriptase. The PCR mixture contained 10 mM Tris-HCl (pH 8.3), 1.5 mM  $\text{MgCl}_2$ , 50 mM KCl, 200 mM dNTP, and 2 mM of each primer with 1 U of Ex Taq Polymerase (Takara). The PCR involved denaturation at  $94^\circ\text{C}$  for 1 min and reaction at  $62^\circ\text{C}$  for 1 min and  $72^\circ\text{C}$  for 2 min for a total of 35 cycles. The purified PCR product was constructed and sequenced. GenBank accession number for  $\beta 2M$  is NM\_004048. The full-length  $\beta 2M$  was subcloned into the pcDNA3.1, a HA-tagged expression vector.

### Cell culture establishment of stable clones, and transient transfection of $\beta 2M$ siRNA

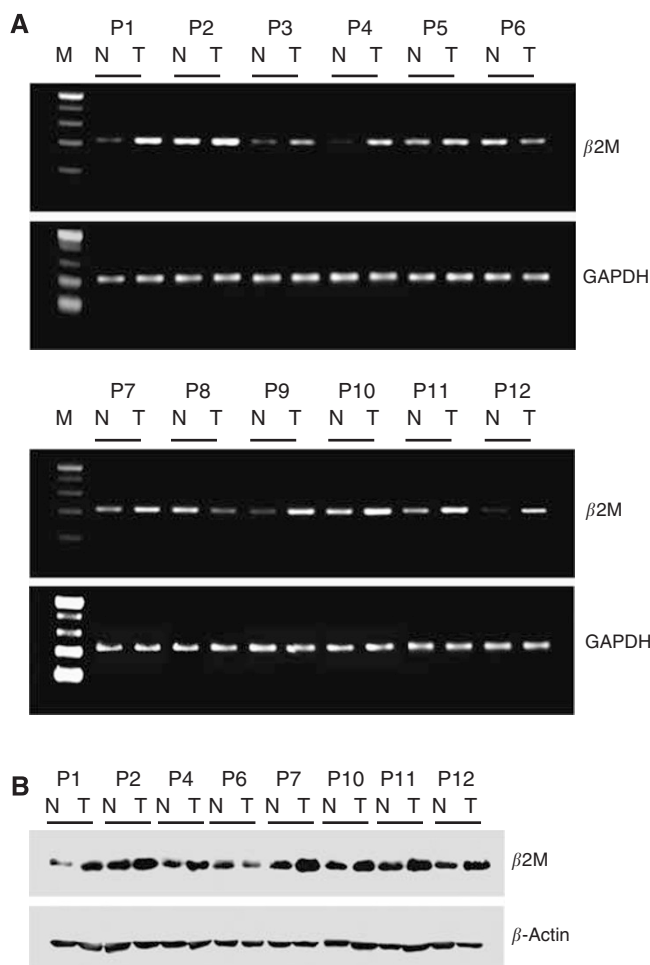
FaDu and SCC25 cells were grown in Dulbecco's modified Eagle's medium (DMEM) containing 10% heat-inactivated foetal bovine serum (FBS) and  $100 \text{ U ml}^{-1}$  penicillin and streptomycin. Transient transfection of FaDu and SCC25 cells with HA-tagged  $\beta 2M$  was achieved using Lipofectamine according to the manufacturer's instructions. FaDu and SCC25 cells stably expressing  $\beta 2M$  were selected using  $400 \mu\text{g ml}^{-1}$  G418 (Calbiochem Novabiochem, San Diego, CA, USA). Each clone was harvested and analysed for exogenous  $\beta 2M$  expression by western blotting. Each stable clone was then lysed in extraction buffer (20 mM piperazine- $N,N'$ -bisethane sulphonic acid, pH 7.2, 100 mM NaCl, 1 mM EDTA, 0.1% 3-[(3-cholamido propyl)-dimethylammonio]-2-hydroxy-1-propanesulphonic acid, 10% sucrose, 1 mM DTT, 1 mM PMSF, and 1 mM  $\text{Na}_3\text{VO}_4$ ) as described earlier (Hsu *et al*, 2004). Double-stranded synthetic RNA oligomers (Ambion, Austin, TX, USA) (5'-UUGCUAUGUGUCUGGGUUtt-3' and 5'-AAACCCAGACAC AUAGCAAtt-3'), deduced from human  $\beta 2M$ , and one negative control siRNA (5'-uucaugugucuguguguutt-3' and 5'-AACACCAC AGACACAUGAAtt-3') were used in our siRNA experiments (Nomura *et al*, 2006).

### Flow cytometry

For analysis of the expression level of  $\beta 2M$  and HLA-I molecule in cancer cell surface, we used flow cytometry to perform the experiments. FaDu cells were trypsinised and harvested in PBS. The cells were incubated with a 1:100 dilution of anti- $\beta 2M$  and anti-HLA class I (Santa Cruz Biotechnology) antibodies or an equivalent concentration of isotype-specific mouse IgG in PBS with 1% BSA overnight at  $4^\circ\text{C}$  with gentle agitation. After washing, cells were incubated for 30 min at room temperature with 1:500 dilution of FITC-conjugated anti-rabbit and TRITC-conjugated anti-mouse IgG secondary antibody, then washed with PBS-1% BSA. The cell-associated fluorescence of 10 000 events per sample was analysed in a FACScan flow cytometer (Becton Dickinson, San Jose, CA, USA) using the Cell Quest software.

### Migration and invasion assay

Migration and invasion assays using FaDu/vehicle, FaDu/ $\beta 2M$ , SCC25/vehicle, and SCC25/ $\beta 2M$  stable clones were conducted using 24-well Transwell (8- $\mu\text{m}$  pore size polycarbonate membrane; CoStar, Bethesda, MD, USA) chambers. For the migration assays,  $5 \times 10^3$  cells suspended in  $400 \mu\text{l}$  of DMEM containing 10% FBS were seeded onto the upper chamber, whereas  $600 \mu\text{l}$  of DMEM containing 10% FBS was added to the outside of the chamber. After 24 h of culture at  $37^\circ\text{C}$  under 5%  $\text{CO}_2/95\%$  air, the cells on the upper surface of the membrane were removed using a cotton tip applicator, whereas the migratory cells on the lower membrane surface were fixed with methanol and stained with Giemsa (Sigma). Migration was assessed by counting the number of cells

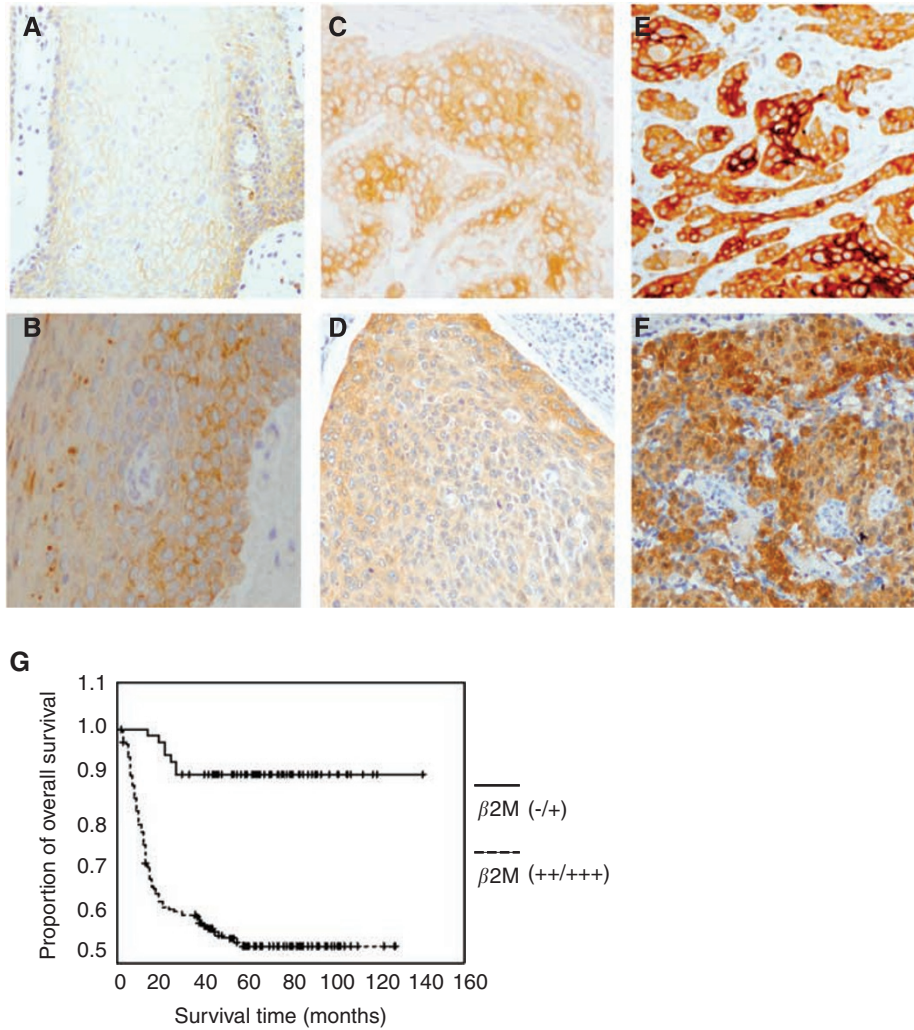


**Figure 1**  $\beta 2$ -Microglobulin ( $\beta 2M$ ) is overexpressed in OCSCC. **(A)** RT-PCR analysis of  $\beta 2M$  expression in OCSCC samples (T) vs that in adjacent non-tumour tissues (N). *GAPDH* was used as an internal loading control to normalise the amount of RNA. **(B)** Western blot analysis of  $\beta 2M$  expression in eight paired patients with oral cancer. Total protein extracts were prepared from adjacent non-tumour (N) and tumour (T) tissues and probed with polyclonal antibodies against human  $\beta 2M$ .  $\beta$ -Actin was used as a control for equal protein loading.

that had migrated on three independent membranes under a phase contrast microscope ( $\times 200$ ); this value was then normalised against that for the vehicle cells to produce the relative ratio. For the invasion assays,  $117 \mu\text{g}$  of Matrigel (BD Biosciences, San Jose, CA, USA) was added to the upper surface of the membrane and allowed to gel overnight at  $37^\circ\text{C}$ . Matrigel is a commercial product extracted from a mouse sarcoma rich in extracellular matrix proteins. The major component is laminin, followed by collagen IV and heparin sulphate proteoglycans. In total,  $1 \times 10^4$  cells in  $400 \mu\text{l}$  of DMEM containing 10% FBS were seeded onto the upper chamber, whereas  $600 \mu\text{l}$  of DMEM containing 10% FBS was added to the outside of the chamber. The subsequent steps were the same as in the migration assays.

### Statistical analysis

Several clinicopathological factors were evaluated, including sex, age ( $\leq 59$  years versus  $\geq 60$  years), T stage (T1, T2 vs T3, T4), N status, and TNM stage (stage I, II vs stage III, IV). Fisher's exact test was used to evaluate the correlation between the clinicopathological variables and the  $\beta 2M$  expression level. A  $P$ -value  $< 0.05$  was considered to be significant. The clinicopathological variables



**Figure 2** Immunohistochemical staining for  $\beta 2M$  and overall survival in patients with OCSCC. (A–F) The  $\beta 2M$  intensity on tissues was evaluated by immunohistochemical staining. (A) The  $\beta 2M$  protein was localised at plasma membrane in normal mucosa tissue. Tumour tissues with plasma membrane (C, E) or cytoplasmic (D, F)  $\beta 2M$  staining were classified according to a two-grade scale: absent or weak staining ( $-/+$ , C, D), and strong staining ( $+/++$ , E, F) as compared with weak  $\beta 2M$  staining in adjacent non-tumour oral tissue (B). (G) The survival period for those patients ( $n = 184$ ) with strong ( $+/++$ ) tumour expression (dashed line) was significantly shorter than that for those ( $n = 72$ ) with absent or weak ( $-/+$ ) expression (solid line). The difference in survival was statistically significant ( $P < 0.001$ ) according to the log-rank test. Overall survival was calculated from the time of surgery to the date of death, the event of interest, or the date of last follow-up. All statistical analyses were performed using SPSS software.

and  $\beta 2M$  expression data were taken into account for the analysis of survival based on the Kaplan–Meier method; statistical significance was defined as a  $P$ -value  $< 0.05$  as assessed by the log-rank test. To determine the effect of specific prognostic factors on survival, a multivariate analysis was performed according to Cox's regression model.

## RESULTS

### Analysis of $\beta 2M$ Overexpression in OCSCC

The mRNA expression of  $\beta 2M$  was evaluated by semiquantitative RT–PCR using a panel of paired tumour/adjacent non-tumour tissue samples. Compared with the adjacent non-tumour tissues, almost all of the OCSCC samples displayed elevated  $\beta 2M$  expression; only two of them showed downregulation of  $\beta 2M$  (Figure 1A). Similar results were obtained for the protein expression of  $\beta 2M$  (Figure 1B). The band corresponding to  $\beta 2M$  was detected in each of the tumour samples. The identity of the

band was confirmed by preincubating the sample extracts with anti- $\beta 2M$  antibodies followed by immunoprecipitation (data not shown). A high percentage of the OCSCC samples (seven of eight, 87.5%) showed enhanced  $\beta 2M$  expression as compared with the adjacent non-tumour tissues. Taken together, these data indicate the elevated expression of  $\beta 2M$  in OCSCC.

### Association of $\beta 2M$ expression with various clinicopathological features

$\beta 2$ -Microglobulin expression in the cytoplasm and cytoplasmic membrane of tumour epithelial cells collected at various stages (T1, T2 and T3, T4) was compared with that in normal oral mucosa and cells from the adjacent non-tumour tissues by immunohistochemistry (Figure 2A–F). The normal oral mucosa was no or very weak intensity for  $\beta 2M$  staining mainly in plasma membrane (Figure 2A). Prominent staining was observed in the tumour samples (Figure 2C–F) compared with that in the adjacent non-tumour tissues, which showed no or very weak  $\beta 2M$  expression (Figure 2B). It can be noted that  $\beta 2M$  was found largely localised in

**Table 1** Clinical profile and correlation between the clinicopathological features and intensity of  $\beta 2M$  expression

Variables	No. of patients	$\beta 2M$ staining		P-value
		Weak (-/+)	Strong (++/+++)	
Age (years)				1
≤59	202	57	145	
≥60	54	15	39	
Gender				0.026
Male	239	63	176	
Female	17	9	8	
Tumor stage				<0.001*
T1, T2	94	69	25	
T3, T4	162	3	159	
Nodal stage				<0.001*
N(-)	153	67	86	
N(+)	103	5	98	
TNM stage				<0.001*
I, II	72	72	0	
III, IV	184	0	184	

\*Statistically significant.

the cytoplasm of both tumour samples (Figure 2D and F) and the adjacent non-tumour tissues (Figure 2B). In some cases,  $\beta 2M$  was also expressed focally in the plasma membrane (Figure 2C and E). Our immunohistochemical data and the correlation with various clinicopathological variables are summarised in Table 1. Of the 94 patients categorised as T1, T2, 73.4% ( $n=69$ ) of the tumours showed no or weak staining (-/+), whereas only 26.6% ( $n=25$ ) exhibited strong staining (++/+++). In contrast, of 162 patients classified as T3, T4, 1.97% ( $n=3$ ) showed a reduction in  $\beta 2M$  staining (-/+), whereas 97.5% ( $n=159$ ) presented with strong (++/+++) staining. Similarly, among the 103 patients who were N(+), 95.2% ( $n=98$ ) of the tumours showed strong (++/+++)  $\beta 2M$  expression, whereas only 4.8% ( $n=5$ ) showed weak (-/+) expression. In terms of TNM stage, 100% ( $n=184$ ) showed strong staining in the more malignant stages (III, IV), whereas 100% ( $n=72$ ) presented with weak staining at less malignant stages (I, II). These data suggest that increased expression of  $\beta 2M$  is significantly correlated with a relatively advanced tumour stage (T3, T4 vs T1, T2,  $P<0.001$ ), positive nodal status (N(+)) vs N(-),  $P<0.001$ , and TNM stage (III, IV vs I, II,  $P<0.001$ ). In contrast, no correlation was observed between  $\beta 2M$  expression and sex or age.

### Analysis of survival according to $\beta 2M$ expression

The Kaplan–Meier analysis of our immunohistochemical results for the patients with OCSCC revealed that the cumulative 5-year overall survival rate was significantly correlated with the clinicopathological characteristics and expression of  $\beta 2M$  (Table 2 and Figure 2G). The disease-free survival rates for those patients in stages T1 and T2 with a negative nodal status and stages I and II were significantly higher than for those in stages T3 and T4 with a positive nodal status and stages III and IV (all  $P<0.001$ , log-rank test). Taken together, the overall survival rates for those patients with weak  $\beta 2M$  expression (92.4%) were significantly higher than for those with  $\beta 2M$  overexpression (51.4%,  $P<0.001$ , log-rank test). These data suggest an increased survival period for those patients with OCSCC having decreased  $\beta 2M$  expression.

**Table 2** Univariate analysis of various clinicopathological features and cumulative 5-year survival rates

Variables	No. of patients	Cumulative 5-year survival rate (%)	P-value
Age (years)			
≤59	202	66.4	0.12
≥60	54	55.1	
Gender			0.14
Male	239	62.7	
Female	17	81.9	
Tumor stage			<0.001*
T1, T2	94	84.0	
T3, T4	162	52.3	
Nodal stage			<0.001*
N(-)	153	77.1	
N(+)	103	44.7	
TNM stage			<0.001*
I, II	72	92.4	
III, IV	184	54.1	
$\beta 2M$ overexpression			<0.001*
Weak	72	92.4	
Strong	184	54.1	

\*Statistically significant.

**Table 3** Multivariate survival analysis

Variables	Hazard ratio (95% CI)	P-value
Tumor stage (T3, T4 vs T1, T2)	3.293 (1.877–5.778)	<0.001*
Nodal stage (N+ vs N-)	2.990 (1.937–4.616)	<0.001*

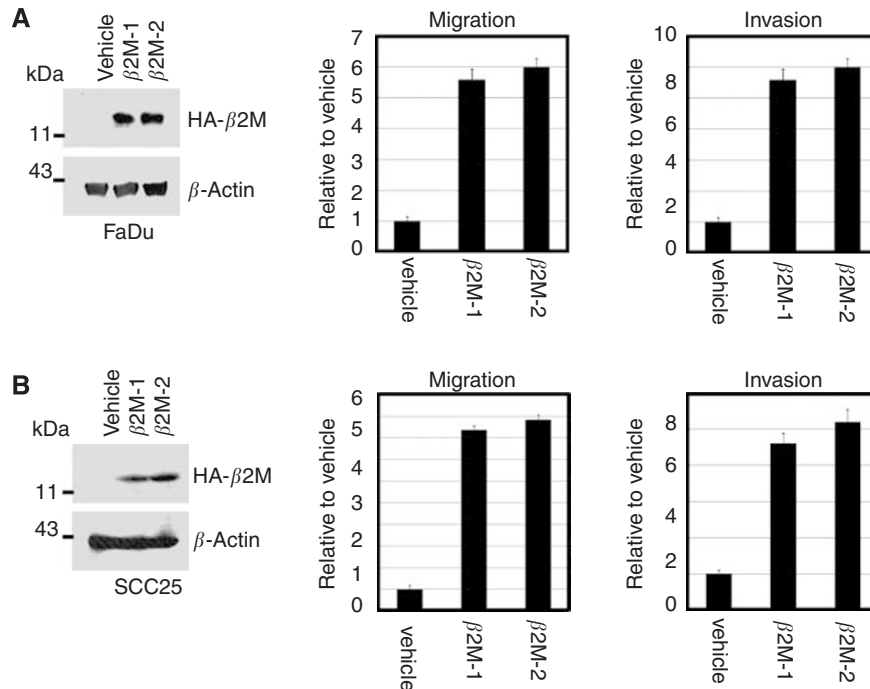
\*Statistically significant.

### Multivariate analysis

To determine whether  $\beta 2M$  expression is an independent predictor of survival, Cox's regression analysis was carried out using tumour stage, lymph nodal status, TNM stage, and  $\beta 2M$  expression as parameters. Our data indicated that tumour stage (hazard ratio (HR): 3.293; 95% CI: 1.877–5.778;  $P<0.001$ ) and nodal stage (HR: 2.990; 95% CI: 1.937–4.616;  $P<0.001$ ) were each independent prognostic factors for OCSCC (Table 3).  $\beta 2$ -Microglobulin status ( $P=0.192$ ) and TNM stage, however, were not independent predictors. Although  $\beta 2M$  was not a key independent factor in our multivariate analysis, we suggested that  $\beta 2M$  may play an important role in the tumour development and nodal metastatic processes in OCSCC patients according to the results of Tables 1 and 2.

### Effect of $\beta 2M$ on oral cancer cell invasion and migration

To determine whether  $\beta 2M$  expression is correlated with cellular migration and invasion *in vitro*, two oral cancer cell lines, FaDu and SCC25, were stably transfected with an expression vector carrying human  $\beta 2M$  cDNA or vector alone as a control. For each cell line, two clones were selected (FaDu/ $\beta 2M$ -1,  $\beta 2M$ -2 and SCC25/ $\beta 2M$ -1,  $\beta 2M$ -2). The level of overexpression in the FaDu/ $\beta 2M$ -1,  $\beta 2M$ -2 and SCC25/ $\beta 2M$ -1,  $\beta 2M$ -2 cells was evaluated by western blot analysis as shown in Figure 3A and B, left panels, respectively. No significant difference in proliferation rate over 24 h was identified between those cells carrying the vehicle control and those cells expressing  $\beta 2M$  by MTT assay (data not shown). In



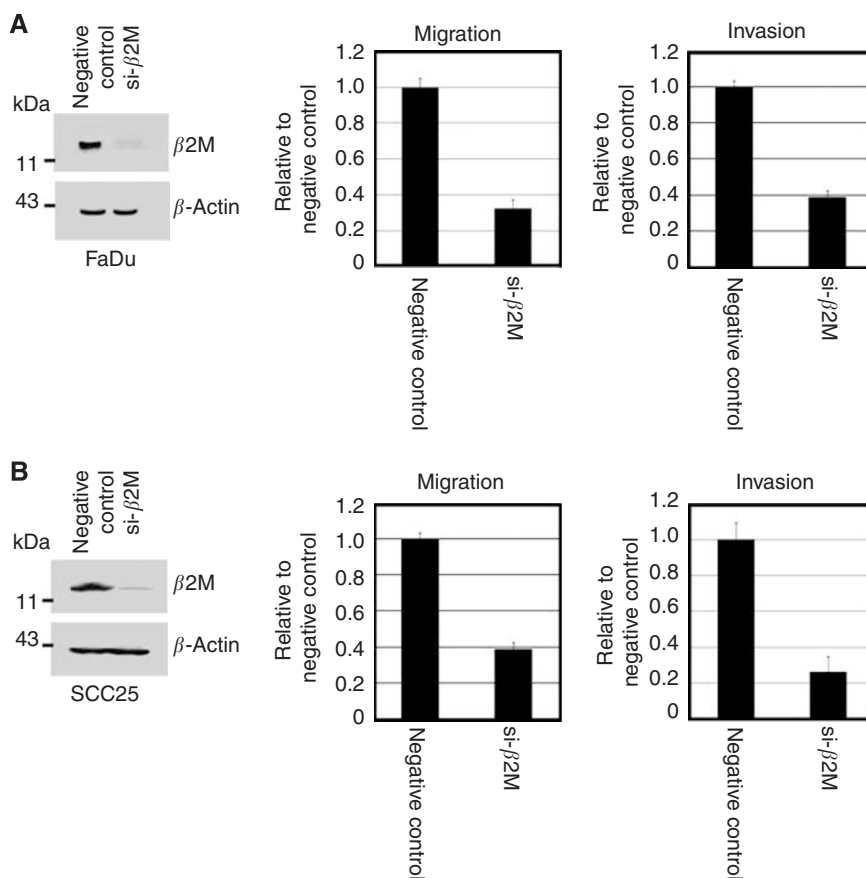
**Figure 3**  $\beta 2$ -Microglobulin ( $\beta 2M$ ) overexpression promotes oral cancer cell migration and invasion. (**A** and **B**, left panel) HA-tagged  $\beta 2M$  stable clones of FaDu and SCC25 cells were established. Cell lysates (50  $\mu$ g) were then prepared and subjected to immunoblot analysis with anti-HA antibodies. (**A** and **B**, middle panel) For the migration assays,  $5 \times 10^3$  cells of the FaDu/vehicle, FaDu/ $\beta 2M-1$  and  $\beta 2M-2$ , SCC25/vehicle, and SCC25/ $\beta 2M-1$  and  $\beta 2M-2$  stable clones were seeded onto the top of a Transwell insert. After 24 h, the cells on the topside were scraped, and the cells that had migrated to the bottom were fixed and stained with Giemsa. The relative-fold migration of the FaDu/vehicle, FaDu/ $\beta 2M-1$  and  $\beta 2M-2$ , SCC25/vehicle, and SCC25/ $\beta 2M-1$  and  $\beta 2M-2$  cells was normalised against the vehicle control and are presented diagrammatically. (**A** and **B**, right panel) For the invasion assays,  $1 \times 10^4$  cells were seeded after the addition of Matrigel. The relative-fold invasion of the stable clones was normalised against the vehicle cells and is shown diagrammatically. The data represent the mean  $\pm$  s.d. of three independent experiments.

addition, the morphology of the cells in each group did not change. The ability of the  $\beta 2M$ -expressing transfectants to migrate across the surface of a chamber was also analysed 24 h after seeding. Compared with the vehicle-transfected FaDu cells, the migratory ability of the FaDu/ $\beta 2M-1$ ,  $\beta 2M-2$  cells significantly increased by 5.5- and 6.0-fold, respectively ( $P < 0.001$ , Figure 3A, middle panel). Owing to the slightly lower level of  $\beta 2M$  expression in SCC25 cells, the SCC25/ $\beta 2M-1$ ,  $\beta 2M-2$  cells displayed 4.6- and 5.2-fold greater migration, respectively ( $P < 0.001$ , Figure 3B, middle panel). This indicates that a rise in  $\beta 2M$  expression is positively correlated with the migration of FaDu and SCC25 cells. To clarify the role of  $\beta 2M$  in invasiveness, the ability of the transfectants to pass through a Matrigel barrier was assayed. Compared with the vehicle-transfected cells, the FaDu/ $\beta 2M-1$ ,  $\beta 2M-2$  cells showed an 8.2- and 8.8-fold greater capacity for invasion, respectively ( $P < 0.001$ , Figure 3A, right panel). Similarly, invasion by the SCC25/ $\beta 2M-1$ ,  $\beta 2M-2$  increased by 7.8- and 8.0-fold, respectively ( $P < 0.001$ , Figure 3B, right panel). Taken together, these results suggest that an increase in the level of  $\beta 2M$  increases the *in vitro* migratory and invasive capacity of FaDu and SCC25 cells. We next analysed whether the inhibition of  $\beta 2M$  expression would decrease the migratory and invasive capacity of FaDu and SCC25 cells. FaDu and SCC25 cells were transiently transfected with either si- $\beta 2M$  or a negative control and two clones were selected (FaDu/si- $\beta 2M$  and SCC25/si- $\beta 2M$ ). After 24 h, the cells were harvested for western blot analysis and seeded into a Transwell apparatus for migration and invasion assays. As shown in Figure 4A and B, left panels, respectively, endogenous  $\beta 2M$  expression was effectively inhibited in the FaDu and SCC25 cells. The migratory ability of the FaDu/si- $\beta 2M$  and SCC25/si- $\beta 2M$  cells decreased by 70 and 64% compared to the negative controls, respectively ( $P < 0.001$ , Figure 4A and B, middle panels). The *in vitro* invasiveness of the two transfectants

decreased by 62 and 75% compared with the negative controls, respectively ( $P < 0.001$ , Figure 4A and B, right panels). These results indicate that si- $\beta 2M$  negatively affected both the migration and invasion of the FaDu and SCC25 cells. To address the mechanistic basis for the activity of  $\beta 2M$ , the expression of membranal  $\beta 2M$  in the transfectants was examined by flow cytometric analysis. The representative data showed that ectopic expression of  $\beta 2M$  increased cell number by 3.9-fold in the transfectants, as compared with that in the vehicle (Figure 5A). We went on to obtain a quantitative analysis of the effect of  $\beta 2M$  expression on the level of HLA-1 in the transfectants. Figure 5B showed that the expression of  $\beta 2M$  did not significantly elevate the level of endogenous HLA-I in the transfectants. The immunohistochemical data further confirmed that staining intensity for HLA-I had no significantly different between the adjacent-non tumour and tumour tissues in  $\beta 2M$ -overexpressing specimens (Supplementary Figure 1).

## DISCUSSION

Increased levels of  $\beta 2M$  have been reported in solid and liquid malignancies, and this has allowed us to investigate the role of  $\beta 2M$  beyond antigen presentation. This is the first study to explore whether the level of  $\beta 2M$  expression is an important prognostic factor in OCSCC. Increased  $\beta 2M$  expression was significantly correlated with tumour stage, lymph node metastasis, and survival (Tables 1 and 2). Our results strongly suggest that the level  $\beta 2M$  is a risk factor for tumour progression in OCSCC (Table 2). In contrast to our results, reduced levels of  $\beta 2M$  expression have been reported in cases of head and neck squamous cell carcinoma (HNSCC) and in malignancies of the oral mucosa, as the downregulation of HLA expression is frequently observed in

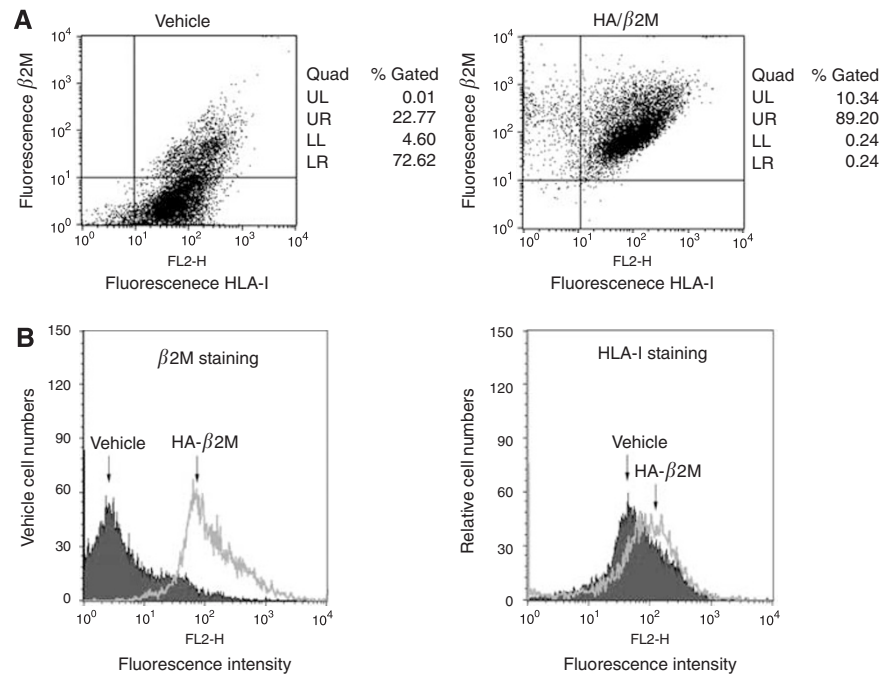


**Figure 4** The migratory and invasive capacity of oral cancer cells is inhibited by  $\beta 2M$ -mediated siRNA. (**A** and **B**, left panel) A negative control siRNA or si- $\beta 2M$  was transfected into FaDu and SCC25 cells. After 24 h, western blotting was performed using anti- $\beta 2M$  and anti- $\beta$ -actin antibodies. (**A** and **B**, middle and right panels) The relative-fold migration and invasion values for the FaDu/si- $\beta 2M$  and SCC25/si- $\beta 2M$  cells were normalised against the negative control cells and are presented diagrammatically. The results represent the mean  $\pm$  s.d. of three independent experiments.

malignancies (Prime *et al*, 1987; Koene *et al*, 2004). A similar report indicated that immunotherapy significantly restored  $\beta 2M$  expression and was associated with an improved outcome in patients with HNSCC (Feinmesser *et al*, 2004). The experimental group in that study was probably too small to cover all of the tumour stages. Moreover, immunohistochemical analysis allows for the selection of small tumour fields, but it is not representative of the overall tumour, which may contain heterogeneous cells. Although tumours frequently produce a variety of 'loss' phenotypes (Aptsiauri *et al*, 2007), including defects in or the genomic loss of the  $\beta 2M$  locus, clinical conclusions must be drawn with caution. To date, the mechanism responsible for an increase in  $\beta 2M$  expression during the progression of cancer is unclear. One interpretation is that the level increases as a consequence of increased cell turnover in the tumour and an enhanced immune response to the malignant process. Another possibility is that the tumours contain three  $\beta 2M$  alleles instead of one. Recently, Nomura *et al* (2006) demonstrated that  $\beta 2M$  promoted growth in human renal cell carcinomas while interrupting the  $\beta 2M$  signalling pathway led to apoptosis of the tumour cells. Accordingly, the elevated expression of  $\beta 2M$  may be associated with an increased resistance to apoptosis. As shown in Tables 1 and 2, an increase in the level of  $\beta 2M$  during the progression of OCSCC is a sign of poor prognosis. The decreased level or total loss of immunoreactive staining for  $\beta 2M$  may be due to the loss of the  $\beta 2M$  locus, which has been shown to occur in early stages of lymph node-positive metastasising HNSCC lesions (Bockmuhl *et al*, 2002); mutations in the coding region of  $\beta 2M$ , leading to a decrease or loss of  $\beta 2M$  expression; or mutations in or methylation of the introns or

promoter of  $\beta 2M$ , leading to a decrease or total loss of expression (Feenstra *et al*, 1999a, b; Koene *et al*, 2004).

Increased expression of  $\beta 2M$ , as detected by immunohistochemical staining and/or shedding of the molecule into the urine and serum, has been observed in more advanced malignancies. This suggests that  $\beta 2M$  modulates cellular proliferation as well as tumour cell migration and invasion. Thus, we generated two stable clonal cell lines of oral cancer cells, FaDu and SCC25, which overexpress  $\beta 2M$ , and investigated whether  $\beta 2M$  affected cell migration and invasion *in vitro*. Our results revealed a positive correlation between  $\beta 2M$  expression and the migration and invasion of the  $\beta 2M$ -overexpressing transfectants (Figure 3). In contrast, the inhibition of  $\beta 2M$  expression by siRNA was sufficient to reduce cellular migration and invasion *in vitro* (Figure 4). These data are consistent with those showing increased immunoreactivity at more advanced stages of OCSCC (Figure 2 and Table 1), suggesting that a rise in the level of  $\beta 2M$  facilitates tumour progression. Importantly, our immunohistochemical data showed that very weak intensity for  $\beta 2M$  staining of almost of all normal oral mucosa was focally localised in the plasma membrane compared to that mainly found in the cytoplasm of tumour (~90 to 92%) and the adjacent non-tumour tissues (~80%). Although cytoplasmic staining of  $\beta 2M$  has been demonstrated in some cases of human renal cell carcinoma (Nomura *et al*, 2006), here, we highlight the changes in  $\beta 2M$  localisation from plasma membrane to cytoplasm between normal and tumour stages of OCSCC. As the association of  $\beta 2M$  overexpression was significantly higher in those patients with OCSCC and lymph node metastasis (N+) than in those without lymph node metastasis



**Figure 5** Flow cytometric analysis of the expression profile of  $\beta 2M$  and HLA-I on the surface membrane of oral cancer cells. **(A)** FaDu/vehicle and FaDu/ $\beta 2M$ -I cells were co-incubated with  $\beta 2M$  ( $2 \mu\text{g ml}^{-1}$ ) and HLA-I ( $2 \mu\text{g ml}^{-1}$ ) antibodies, as indicated. At least  $10^6$  cells were analysed on a FACSCalibur flow cytometer under standard flow for 120 s. Percentage of cell gated in each quadrant. Representative results of three independent experiments. **(B)** Representative histograms on the basis of flow cytometric analysis of detached FaDu/vehicle and FaDu/ $\beta 2M$ -I cells after immunolabelling with  $\beta 2M$  and HLA-I antibodies. Representative results of three independent experiments.

(N-),  $\beta 2M$  may promote metastasis in OCSCC. Our current findings agree with those from other reports showing that  $\beta 2M$  is an effective growth-promoting factor in the growth and progression of renal cell carcinoma and prostate cancer (Huang et al, 2006; Nomura et al, 2006). Accordingly, these findings address the following clinical implications: (a)  $\beta 2M$  must play a far-reaching function than just a housekeeping gene or the role on stabilisation and presentation of MHC class I molecule in cells; (b)  $\beta 2M$  may act as an effective growth-promoting factor to facilitate tumour progression, invasion, and migration in OCSCC; and (c) increased synthesis and/or release of  $\beta 2M$  by an elevated serum or urine  $\beta 2M$  concentration may become one of important prognostic factor and survival predictors in OCSCC.

In conclusion, we found that  $\beta 2M$  is aberrantly expressed in OCSCC relative to histologically adjacent non-tumour tissue. Moreover,  $\beta 2M$  is an important factor for several clinicopathological variables in OCSCC, suggesting its potential as a biomarker of the

disease. Furthermore,  $\beta 2M$  overexpression facilitates the migration and invasion of oral cancer cells, which supports the finding that elevated levels of  $\beta 2M$  are positively correlated with advanced OCSCC. Apart from the exploration of prognostic factors in OCSCC, our results present a potential target for immunotherapy.

## ACKNOWLEDGEMENTS

This study was supported by Chang Gung Memorial Hospital, Taiwan (Grant no. CMRPG860511) and Kaohsiung Medical University, Taiwan (Grant no. QA096004). We thank Drs SC Chen, LY Chuang and JY Guh for helpful suggestions and discussion.

Supplementary Information accompanies the paper on British Journal of Cancer website (<http://www.nature.com/bjc>)

## REFERENCES

- Aptsiauri N, Cabrera T, Mendez R, Garcia-Lora A, Ruiz-Cabello F, Garrido F (2007) Role of altered expression of HLA class I molecules in cancer progression. *Adv Exp Med Biol* **601**: 123–131
- Bockmuhl U, Schluns K, Schmidt S, Matthias S, Petersen I (2002) Chromosomal alterations during metastasis formation of head and neck squamous cell carcinoma. *Genes Chromosomes Cancer* **33**: 29–35
- Feenstra M, Bakema J, Verdaasdonk M, Rozemuller E, van den Tweel J, Slootweg P, de Weger R, Tilanus M (2000) Detection of a putative HLA-A\*31012 processed (intronless) pseudogene in a laryngeal squamous cell carcinoma. *Genes Chromosomes Cancer* **27**: 26–34
- Feenstra M, Rozemuller E, Duran K, Stuy I, van den Tweel J, Slootweg P, de Weger R, Tilanus M (1999a) Mutation in the beta 2 m gene is not a

frequent event in head and neck squamous cell carcinomas. *Hum Immunol* **60**: 697–706

- Feenstra M, Veltkamp M, van Kuik J, Wiertsema S, Slootweg P, van den Tweel J, de Weger R, Tilanus M (1999b) HLA class I expression and chromosomal deletions at 6p and 15q in head and neck squamous cell carcinomas. *Tissue Antigens* **54**: 235–245
- Feinmesser M, Okon E, Schwartz A, Kaganovsky E, Hardy B, Aminov E, Nageris B, Sulkes J, Feinmesser R (2004) Histologic and immunohistochemical characterization of tumor and inflammatory infiltrates in oral squamous cell carcinomas treated with local multikine immunotherapy: the macrophage at the front line. *Eur Arch Otorhinolaryngol* **261**: 359–368



- Hsu JM, Lee YC, Yu CT, Huang CY (2004) Fbx7 functions in the SCF complex regulating Cdk1-cyclin B-phosphorylated hepatoma up-regulated protein (HURP) proteolysis by a proline-rich region. *J Biol Chem* **279**: 32592–32602
- Huang WC, Wu D, Xie Z, Zhou HE, Nomura T, Zayzafoon M, Pohl J, Hsieh CL, Weitzmann MN, Farach-Carson MC, Chung LW (2006) beta2-microglobulin is a signaling and growth-promoting factor for human prostate cancer bone metastasis. *Cancer Res* **66**: 9108–9116
- Klein T, Levin I, Niska A, Koren R, Gal R, Schachter J, Kfir B, Narinski R, Warchaizer S, Klein B (1996) Correlation between tumour and serum beta 2 m expression in patients with breast cancer. *Eur J Immunogenet* **23**: 417–423
- Koene GJ, Arts-Hilkes YH, van der Ven KJ, Rozemuller EH, Slootweg PJ, de Weger RA, Tilanus MG (2004) High level of chromosome 15 aneuploidy in head and neck squamous cell carcinoma lesions identified by FISH analysis: limited value of beta2-microglobulin LOH analysis. *Tissue Antigens* **64**: 452–461
- Korkolopoulou P, Kaklamanis L, Pezzella F, Harris AL, Gatter KC (1996) Loss of antigen-presenting molecules (MHC class I and TAP-1) in lung cancer. *Br J Cancer* **73**: 148–153
- Lee JK, Tsai SC, Hsieh JF, Ho YJ, Sun SS, Kao CH (2000) Beta-2-microglobulin (beta 2M) as a tumor marker in nasopharyngeal carcinoma. *Anticancer Res* **20**: 4765–4768
- Lu CC, Chang KW, Chou FC, Cheng CY, Liu CJ (2007) Association of pretreatment thrombocytosis with disease progression and survival in oral squamous cell carcinoma. *Oral Oncol* **43**: 283–288
- Madjd Z, Spendlove I, Pinder SE, Ellis IO, Durrant LG (2005) Total loss of MHC class I is an independent indicator of good prognosis in breast cancer. *Int J Cancer* **117**: 248–255
- Mahrle G, Patyk H, Bolling R (1982) Concanavalin-A binding sites, pemphigus antigens, and beta 2 microglobulin in epidermal hyperproliferation, premalignant and malignant lesions. *Arch Dermatol Res* **274**: 85–92
- Margalit A, Sheikhet HM, Carmi Y, Berko D, Tzehoval E, Eisenbach L, Gross G (2006) Induction of antitumor immunity by CTL epitopes genetically linked to membrane-anchored beta2-microglobulin. *J Immunol* **176**: 217–224
- Mehta AM, Jordanova ES, Kenter GG, Ferrone S, Fleuren GJ (2008) Association of antigen processing machinery and HLA class I defects with clinicopathological outcome in cervical carcinoma. *Cancer Immunol Immunother* **57**: 197–206
- Nomura T, Huang WC, Zhou HE, Wu D, Xie Z, Mimata H, Zayzafoon M, Young AN, Marshall FF, Weitzmann MN, Chung LW (2006) Beta2-microglobulin promotes the growth of human renal cell carcinoma through the activation of the protein kinase A, cyclic AMP-responsive element-binding protein, and vascular endothelial growth factor axis. *Clin Cancer Res* **12**: 7294–7305
- Palmisano GL, Pistillo MP, Capanni P, Pera C, Nicolo G, Salvi S, Perdelli L, Pasciucco G, Ferrara GB (2001) Investigation of HLA class I down-regulation in breast cancer by RT-PCR. *Hum Immunol* **62**: 133–139
- Prime SS, Pitigala-Arachchi A, Crane IJ, Rosser TJ, Scully C (1987) The expression of cell surface MHC class I heavy and light chain molecules in pre-malignant and malignant lesions of the oral mucosa. *Histopathology* **11**: 81–91
- Tsimberidou AM, Kantarjian HM, Wen S, O'Brien S, Cortes J, Wierda WG, Koller C, Pierce S, Brandt M, Freireich EJ, Keating MJ, Estey EH (2008) The prognostic significance of serum beta2 microglobulin levels in acute myeloid leukemia and prognostic scores predicting survival: analysis of 1180 patients. *Clin Cancer Res* **14**: 721–730
- Yagasaki H, Kawata N, Takimoto Y, Nemoto N (2003) Histopathological analysis of angiogenic factors in renal cell carcinoma. *Int J Urol* **10**: 220–227