

Expression of the epidermal growth factor receptor family in prostate carcinoma before and during androgen-independence

E Hernes^{*1}, SD Fosså¹, Aa Berner², B Otnes³ and JM Nesland²

¹Department of Clinical Cancer Research, The Norwegian Radium Hospital, Montebello, N-0310 Oslo, Norway; ²Department of Pathology, The Norwegian Radium Hospital HF, Oslo, Norway; ³Department of Surgery, Bærum Hospital, Bærum, Norway

Novel palliative strategies for patients with androgen-independent prostate cancer (AIPC) include targeting the epidermal growth factor receptor (EGFR) family. The aim of the present study was to investigate inpatient changes of EGFRs during the development of AIPC. In total, 106 symptomatic AIPC patients were identified in whom prostatic biopsies (adenocarcinoma) were available both before the start of androgen deprivation (PRTR biopsy) and after the development of AIPC (AIPC biopsy). All four known subgroups of the EGFR family were determined by immunohistochemistry (IHC): c-erbB-1 (EGFR), c-erbB-2 (HER2/neu), c-erbB-3 (HER3) and c-erbB-4 (HER4). Moderate to strong membrane-specific staining was recorded semiquantitatively (< 10% vs ≥ 10% = IHC stained tumour cells: 'negative' vs 'positive' staining). The medical records were reviewed for clinical variables. During the development of AIPC, inpatient changes occurred in two opposite directions for each of the four EGFRs: negativity changed to positivity, and vice versa, statistically significant only for the increase of c-erbB-1 expression ($P = 0.001$). The c-erbB-2 expression in the AIPC biopsy was associated with a significantly shorter survival from the time of the AIPC biopsy ($P = 0.029$). Our results support ongoing therapeutic attempts of EGFR inhibition in subgroups of patients with prostate cancer. Further research is needed to understand the function of EGFRs in this malignancy.

British Journal of Cancer (2004) 90, 449–454. doi:10.1038/sj.bjc.6601536 www.bjcancer.com
© 2004 Cancer Research UK

Keywords: prostatic neoplasms/receptor; epidermal growth factor/receptor; erbB-2/receptor; erbB-3

Androgen-independent prostate cancer (AIPC) is defined as biochemical and/or clinical disease progression during androgen deprivation with castration levels of serum testosterone. Patients are in need of palliation, and novel strategies focus on the epidermal growth factor receptor (EGFR) family and related intracellular pathways.

Based on current knowledge, the EGFR family comprises four members; c-erbB-1 (EGFR), c-erbB-2 (HER2/neu), c-erbB-3 (HER3) and c-erbB-4 (HER4) (Olayioye *et al*, 2000; Suo and Nesland, 2002). All members of this family have an extracellular ligand-binding domain, a single transmembrane domain and a cytoplasmic tyrosine kinase domain, which for c-erbB-3 is nonfunctioning. Binding of ligands to the extracellular domains leads to the formation of homo- and heterodimers. This starts a complex signalling cascade finally resulting in cellular proliferation, prevention of apoptosis and promotion of tumour cell mobility, adhesion and invasion (Barton *et al*, 2001).

Previous observations have demonstrated increased levels of c-erbB-1 immunoreactivity in hormone-independent human prostate cancer cell lines (MacDonald and Habib, 1992; Sherwood *et al*, 1998). In tissue from patients with metastatic AIPC, the c-erbB-1 expression has been reported as high as about 90–100% (Scher *et al*, 1995; Di Lorenzo *et al*, 2002). For c-erbB-2 expression, there have been reports of divergent rates in primary prostate

carcinoma (Mellon *et al*, 1992; Kuhn *et al*, 1993; Fossa *et al*, 2002). In xenografts, an upregulation of c-erbB-2 has been found when the tumour becomes androgen-independent (Craft *et al*, 1999). In tumours from patients with AIPC, c-erbB-2 expression is reported from relatively uncommon (Reese, 2001; Savinainen *et al*, 2002) up to about 50–80% (Signoretti *et al*, 2000; Osman *et al*, 2001; Di Lorenzo *et al*, 2002).

To the best of our knowledge, data are lacking from a larger series that compare the expression of all EGFRs for the same patient before and after the development of AIPC. The primary aim of the present study is to fill this gap and, secondarily, to provide information about the prognostic significance of EGFR expression in AIPC patients.

MATERIALS AND METHODS

From the files of the Department of Pathology, The Norwegian Radium Hospital (NRH), we identified AIPC patients with an adenocarcinoma-positive biopsy from the prostate before the start of androgen deprivation (pretreatment (PRTR) biopsy) and after the development of symptomatic AIPC (AIPC biopsy). The latter histological material was obtained by palliative surgery due to local problems (transurethral resections of the prostate (TUR-P)/transvesical prostatectomy (TV)), or represented a diagnostic biopsy in order to differentiate between a growing prostate cancer and rectal cancer (transrectal/transperineal core biopsies). Patients displaying primary androgen-independence, defined as clinical progression within 3 months after the

*Correspondence: E Hernes, E-mail: eivor.hernes@klinmed.uio.no
Received 3 September 2003; revised 29 October 2003; accepted 5 November 2003

start of castration therapy, were excluded from the present study. Any concomitant or prior medical and/or surgical treatment was allowed, whereas radiotherapy (RT) to the prostate prior to the AIPC biopsy was a criterion for exclusion. In all, 10 specimens of archival formalin-fixed normal prostate tissue represented a clinical control group.

Clinical information

The following information was extracted from the medical records:

Initial diagnosis and treatment: Date, serum prostate-specific antigen (PSA) level, extent of the disease categorised as local, regional or distant metastases according to the registration routines of the Cancer Registry of Norway (www.krefregisteret.no), date of start and type of androgen deprivation.

Clinical course and diagnosis of AIPC: Date and type of clinical progression (local vs distant), date and status of last observation (death or 15 October 2001). For all PRTR and AIPC biopsies, we recorded the date and type of biopsy together with the Gleason score, the latter differentiating between Gleason score 7a (grade 3 + 4) and Gleason score 7b (grade 4 + 3) (Lilleby et al, 2001).

Immunohistochemistry

For each eligible patient, the archival paraffin blocks of the PRTR biopsy and of the first available biopsy after diagnosis of AIPC were collected. Serial paraffin sections (5 µm thick) were cut from the blocks with the most representative amount of tumour tissue, as determined in haematoxylin and eosin-stained slides. The newly cut sections were mounted on silane-coated slides and dried for 1 h in 56°C followed by 37°C overnight. The sections were deparaffinised, rehydrated and incubated with 0.3% H₂O₂ in methanol for 30 min to block endogenous peroxidase. The pretreatment conditions and the primary antibodies against PSA and the EGFRs are presented in Table 1. Automatic immunostaining with the biotin-streptavidin amplified (B-SA) system (Optimax[®] Automated Cell Staining System Plus, BioGenex, San Raman, CA, USA) was applied. All series included both a positive control (known positive case) and a negative control in which a nonreacting immunoglobulin of the same subclass had substituted the primary antibody. All controls were satisfactory.

Scoring procedure

The results of the immunostaining were reviewed by an experienced pathologist (JMN) and scored semiquantitatively as follows: no staining: –(minus); scattered cells to less than 1% tumour cells positive: +; 1 to <10% tumour cells positive: ++; 10–50% tumour cells positive: +++ and >50% cells positive: +++++. Scores of –, + and +++ were grouped together as ‘immunohistochemistry (IHC)-negative’ as opposed to ‘IHC-positive’ findings in the examination of the clinical impact. For the EGFRs, only moderate to strong cell membrane-specific immunostaining was taken into account.

Table 1 Primary antibodies and conditions

Antibody against	Source	Cat. no.	Dilution	Pretreatment
PSA	DAKO, CA, USA	M0750	1:20	Microwave 2 × 5 min ^a
c-erbB-1	DAKO, CA, USA	M3563	1:100 ^b	Pronase 10 min
c-erbB-2	Novocastra Laboratories Ltd, Newcastle, UK	NCL-CB11	1:200	Microwave 2 × 5 min
c-erbB-3	SantaCruz Biotechnology Inc., CA, USA	SC-415	1:50	None
c-erbB-4	SantaCruz Biotechnology Inc., CA, USA	SC-283	1:50	Microwave 2 × 5 min

^aIn 10 mmol/l citrate buffer (pH 6.0). ^bApplied overnight.

Statistics

Statistical analyses were performed using the computer-based program SPSS (Statistical Package for Social Sciences) version 10.0. Individual changes of immunostaining after diagnosis of AIPC were assessed by the McNemar test for related samples. The overall survival was estimated by the Kaplan–Meier method from the date of the AIPC biopsy to the last observation/death applying the logrank test to assess statistical significance. *P*-values <0.05 were regarded statistically significant.

RESULTS

Patient characteristics

A total of 106 prostate cancer patients (diagnosed 1970–1997) fulfilled the eligibility criteria. The median age at initial diagnosis was 70 years (range: 50–86) (Table 2). In total, 23% of the patients had distant metastases at the time of initial diagnosis. Only five of 34 patients with initially available serum PSA values displayed levels less than 10 µg/l. Androgen deprivation was started within median 2 months after initial diagnosis (range 0–109). After a median time of 32 months (range 7–167) AIPC was diagnosed in all patients. Distant metastases were recorded for 43 patients after the development of AIPC. Of the 105 PRTR biopsies evaluable for Gleason score, 79% were ≥7b (Table 3). All AIPC biopsies were Gleason score ≥7b.

Immunostaining

The percentage of PSA immunoreactive specimens decreased from 83% (88 of 106 patients) to 69% (73 patients) as the patients developed AIPC (Table 3). A total of 21 patients lost PSA positivity as they developed AIPC. Before androgen deprivation, c-erbB-1 positivity was demonstrated in 24 patients (23%) and in 46 patients (43%) after the development of AIPC (*P*=0.001). The comparable figures for c-erbB-2 were 33% and 24%, respectively.

Table 2 Demographics at diagnosis of prostate cancer

Age (years)	70 (50–86) ^a
Extent of the disease	
Loco-regional	81 (76%) ^b
Distant metastases	24 (23%)
Unknown	1 (1%)
Primary hormone treatment	
Orchiectomy	56 (53%)
LHRH analogues	33 (31%)
Combined LHRH analogues/antiandrogens	15 (14%)
Oestrogens	2 (2%)
Initial diagnosis to diagnosis of AIPC (months)	32 (7–167)

^aMedian (range). ^bNumber of patients (%).

Table 3 Histological specimens

	PRTR biopsy	AIPC biopsy	P ^a
<i>Type of biopsy</i>			
TUR-P	26 (25%)	99 (93%)	
TV prostatectomy	7 (7%)	—	
Transrectal/transperineal core biopsy	73 (69%)	7 (7%)	
<i>Gleason score</i>			
≤7a (grade 3+4)	21 (20%)	—	
≥7b (grade 4+3)	84 (79%)	106 (100%)	
Not evaluable	1 (1%)	—	
<i>IHC positivity</i>			
PSA	88 (83%)	73 (69%)	0.006
c-erbB-1	24 (23%)	46 (43%)	0.001
c-erbB-2	35 (33%)	25 (24%)	0.174
c-erbB-3	15 (14%)	22 (21%)	0.21
c-erbB-4	25 (24%)	31 (29%)	0.43

^aMcNemar test for related samples.

c-erbB-1 and c-erbB-2 IHC positivity after the development of AIPC is illustrated by Figure 1A–B.

The EGFRs remained negative in 48–71% of the patients during the development of AIPC (Figure 2). Of 82 patients whose PRTR biopsies were c-erbB-1-negative, 31 displayed c-erbB-1 positivity in their AIPC biopsy ($P = 0.001$). However, nine of 24 patients with c-erbB-1 positivity before hormone treatment lost this immunoreactivity after the development of AIPC. The direction of intrapatient changes for c-erbB-2, c-erbB-3 and c-erbB-4 was less pronounced. Overall, the positivity of EGFRs was not significantly related to Gleason score or PSA immunoreactivity (data not shown). During the development of AIPC, the number of c-erbB-1-positive specimens was doubled in those patients who lost PSA positivity, whereas the number of c-erbB-2 positive specimens decreased from eight to three (Table 4). For the 10 specimens of normal prostate tissue, four displayed c-erbB-1 positivity, whereas none were positive for c-erbB-2, c-erbB-3 or c-erbB-4.

Survival

At the time of the last observation, 91 patients (86%) were dead. The median overall survival time from the date of the AIPC biopsy was 20 months (95% CI: 15–26 months). The immunoreactivity of c-erbB-2 determined decreased survival ($P = 0.029$) (Figure 3A), whereas the positivity of c-erbB-4 tended to indicate a better 2-year survival than c-erbB-4 negativity ($P = 0.054$) (Figure 3B) (Table 5). The coexpression of c-erbB-1 and c-erbB-2 in the AIPC biopsy (17 patients) did not represent a statistically significant poor prognosis factor ($P = 0.064$).

DISCUSSION

In this descriptive study, 43% of the prostate cancer specimens obtained from growing pelvic tumours of AIPC patients expressed the c-erbB-1 protein and 24% expressed c-erbB-2, the latter being a poor prognosis factor. During the development of AIPC, intrapatient changes occurred in two opposite directions for each of the four EGFRs: (1) negativity of the PRTR biopsies changed to positivity of the paired AIPC biopsies and (2) positivity of the PRTR biopsies changed to negativity of the paired AIPC biopsies. The development of AIPC was significantly associated with the increase of c-erbB-1 expression, whereas no changes for the other growth factor receptors reached the level of statistical significance. The Gleason score and PSA immunoreactivity were not associated with growth factor receptor expression before or after the

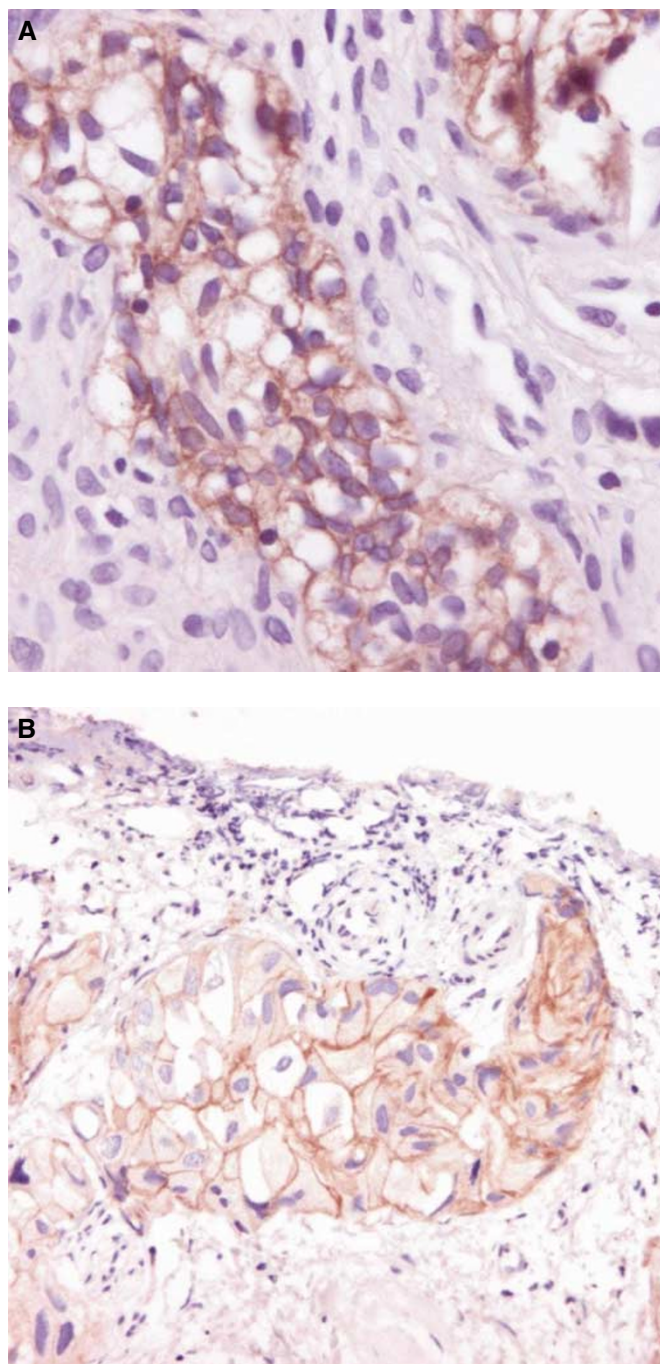


Figure 1 Immunohistochemical detection after the development of AIPC of (A) c-erbB-1 (magnification $\times 40$) and (B) c-erbB-2 (magnification $\times 20$).

development of AIPC. In normal prostate tissue, four out of 10 specimens displayed c-erbB-1 positivity, whereas none were positive for c-erbB-2, c-erbB-3 or c-erbB-4.

Previous observations of the expression of c-erbB-1 and c-erbB-2 in prostate cancer tissue and cell lines have demonstrated highly divergent rates. Our results display figures far below the highest reported values of c-erbB-1 and c-erbB-2 expression, but for c-erbB-2 our figures are higher than the results from Savinainen *et al* (2002). The following explanations are offered: Firstly, the cancer cell population in biopsies from human AIPC is much more heterogeneous than that from laboratory cell lines. Secondly, there

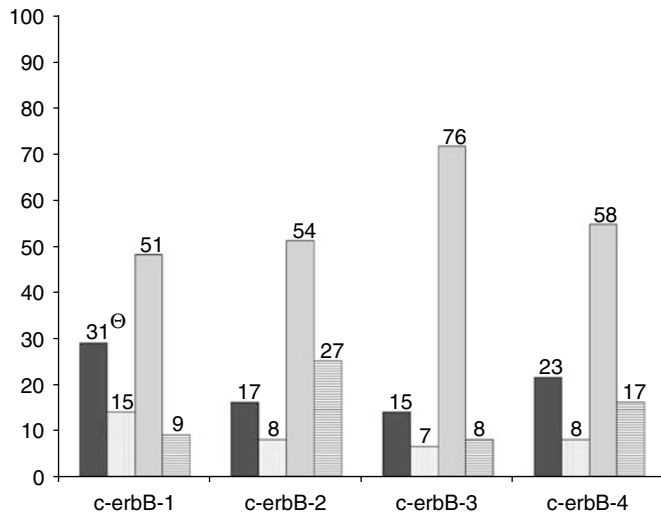


Figure 2 Inpatient change (PRTR→AIPC) of IHC stainability (106 patients). ■ Negative→Positive; □ Positive→Positive; ▨ Negative→Negative; ▤ Positive→Negative. [⊖]Number of patients.

Table 4 Growth factor receptors in 21 patients with a PSA-positive PRTR biopsy changing to PSA negativity at the development of AIPC

	PRTR biopsy	AIPC biopsy	P ^a
<i>IHC positivity</i>			
c-erbB-1	6 (29%)	11 (52%)	0.180
c-erbB-2	8 (38%)	3 (14%)	0.125
c-erbB-3	5 (24%)	5 (24%)	1.00
c-erbB-4	7 (33%)	7 (33%)	1.00

^aMcNemar test for related samples.

may be differences in the pattern of EGFRs between AIPC tissue from the prostatic tumour, as used in the present study, and that observed in metastatic cancer tissue as examined by Scher *et al* (1995). Tissue from metastases may express higher levels of growth factor receptors than the primary tumour. Thirdly, several methodological differences as to IHC may lead to variability of the results. In our study, only moderate or strong membrane staining was considered a positive finding, whereas both Scher *et al* (1995) and Di Lorenzo *et al* (2002) included weak membrane staining of c-erbB-1 in their cohort of positive specimens. The use of different antibodies represents another cause of variability of the results. Finally, uncontrollable variations as the duration of formalin fixation of the archival specimens may additionally influence the immunoreactivity of EGFRs.

The results of the present study are in agreement with the published observations: expression of c-erbB-1 increases significantly, as the tumour becomes androgen independent. Xie *et al* (1995) reported that c-erbB-1-mediated signals are associated with the invasiveness of DU-145 human prostate carcinoma cells. However, we were unable to confirm the findings of Di Lorenzo *et al* (2002), that c-erbB-1 expression increased with increasing Gleason score. Unlike the series of Di Lorenzo *et al*, 80% of the untreated cases of the present study were already Gleason score ≥ 7 b. Di Lorenzo *et al* also found a positive correlation between serum PSA and c-erbB-1, which was not confirmed in our study applying IHC-detected PSA. Lee *et al* (2003) indicated that decreased PSA secretion in androgen-independent LNCaP C-81 cells is associated with a low expression of c-erbB-2, similar to our observation of a trend of reduced c-erbB-2 expression in biopsies that became PSA negative.

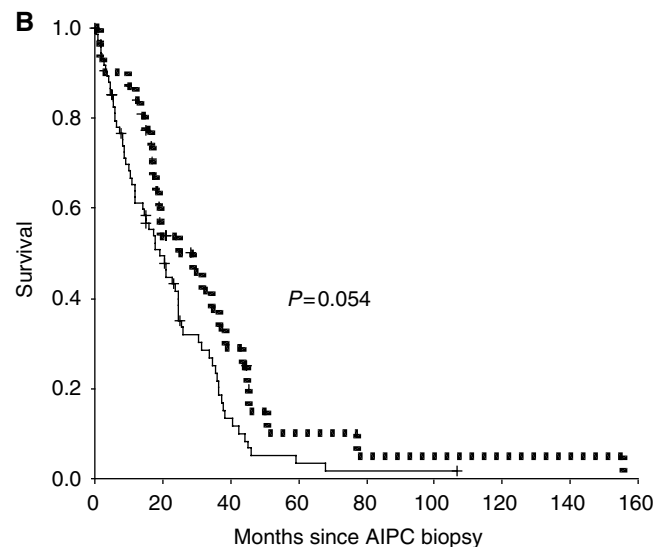
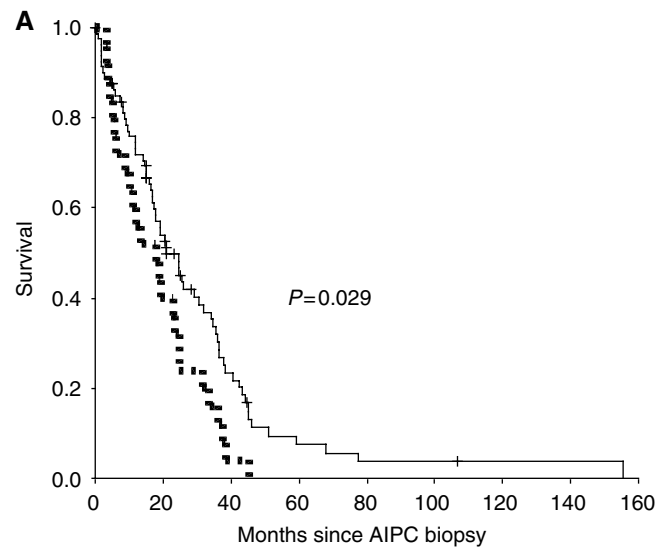


Figure 3 (A) C-erbB-2 stainability of the AIPC biopsy and overall survival. — c-erbB-2 negative (81), - - - c-erbB-2 positive (25). (B) C-erbB-4 stainability of the AIPC biopsy and overall survival. — c-erbB-4 negative (75), - - - c-erbB-4 positive (31).

Even though high levels of c-erbB-1 can be demonstrated in human prostate cancer, especially after the development of AIPC, its clinical role is not yet clear. This receptor's function is further obscured as it has become clear that internalisation has to take place for its activation (Kim *et al*, 2003). Thus, the protein expression of c-erbB-1 *per se* is only one of several conditions for this receptor's functionality.

The role of c-erbB-2 in prostate cancer is also controversial, contrary to this receptor's clinical importance for advanced breast cancer (Cobleigh *et al*, 1999; Slamon *et al*, 2001). As seen in the present study, immunoreactivity for this receptor has been reported in 9% (Mark *et al*, 1999) up to 30% in untreated patients (20%, Osman *et al*, 2001; 25%, Signoretti *et al*, 2000; 29%, Xie *et al*, 1995; and 30%, Fossa *et al*, 2002). Savinainen *et al* (2002) did not find c-erbB-2 immunoreactivity in any of 54 specimens from untreated patients, nor in 20 lymph node metastases or 50 hormone-refractory tumours. The percentage of c-erbB-2-positive cases among untreated prostate cancer patients thus seems generally lower than in breast cancer. During the development of

Table 5 EGFR family expression and survival from the date of AIPC biopsy

Immunoreactivity	Number of patients (%)	2-year survival	P ^a
<i>c-erbB-1</i>			
Negative	60 (57%)	0.526	0.118
Positive	46 (43%)	0.362	
<i>c-erbB-2</i>			
Negative	81 (76%)	0.498	0.029
Positive	25 (24%)	0.320	
<i>c-erbB-3</i>			
Negative	84 (79%)	0.463	0.266
Positive	22 (21%)	0.409	
<i>c-erbB-4</i>			
Negative	75 (71%)	0.416	0.054
Positive	31 (29%)	0.539	

^aLogrank test for trend.

AIPC, several authors agree that *c-erbB-2* positivity increases (Xie *et al*, 1995; Signoretti *et al*, 2000; Osman *et al*, 2001), contrary to our results that showed reversal to *c-erbB-2* negativity in 27 out of 35 AIPC patients. The *c-erbB-2* immunoreactivity may, however, still be important in the clinical management of a subgroup of these patients, and Moasser *et al* (2001) found that cell lines expressing *c-erbB-2* are particularly sensitive to ZD1839. Furthermore, *c-erbB-2* and *c-erbB-3* frequently act together creating heterodimers. Recently, a naturally occurring inhibitor of *c-erbB-3* has been detected (Lee *et al*, 2001), and at least in some tumour cell lines, ZD1839 also inhibits *c-erbB-3* (Moasser *et al*, 2001).

Both *c-erbB-1* and *c-erbB-2* immunoreactivity have been shown to be associated with an unfavourable prognosis in a homogenous series of hormonally untreated cancer patients, in particular if these two receptors are combined (Di Lorenzo *et al*, 2002). Owing to the clinical heterogeneity of our untreated cases, we did not perform a survival analysis based on the PRTR biopsies. However, we found a significant association between *c-erbB-2* positivity of AIPC biopsies and a poor prognosis, whereas coexpression of *c-erbB-1* and *c-erbB-2* in AIPC patients was not statistically significantly associated with an unfavourable prognosis. The finding of a slightly better survival in AIPC patients with *c-erbB-*

4 immunoreactivity needs further confirmation. Previously, the association between *c-erbB-4* positivity and a better clinical outcome has been demonstrated for advanced breast cancer patients (Suo and Nesland, 2002).

The strength of the present study is its large number of patients and the possibility to analyse inpatient changes of expression of EGFRs during the development of AIPC. Our investigations of EGFRs are, however, limited to IHC only. The correlation between IHC-detected *c-erbB-2* expression and comparable results of FISH analyses has been debated (Press *et al*, 2002). Analysis by IHC labels the gene product and has been sufficiently accurate for screening purposes, defining positive cases by moderate or strong membrane-specific staining in >10% of the tumour cells. On the other hand, the FISH technique demonstrates gene amplification, and is currently applied in breast cancer patients with nonconclusive *c-erbB-2* IHC results and possible therapeutic consequences. It may be discussed whether the pattern of expression of EGFRs in our AIPC patients, all with local problems, is representative for AIPC patients in general. As we have previously indicated, the clinical course and survival of AIPC patients with local problems seem to differ from that of AIPC patients with symptomatic bone metastases (Hernes *et al*, 2000; Hernes *et al*, 2003).

In summary, we find that during the development of AIPC inpatient changes occur in two opposite directions for each of the four EGFRs: negativity change to positivity, and vice versa, statistically significant only for the increase of *c-erbB-1* expression ($P=0.001$). *c-erbB-2* is a poor prognosis factor in AIPC patients with local problems. These findings support ongoing attempts to develop new treatment strategies for subgroups of prostate cancer patients with the inhibition of EGFRs and their signalling pathways. The sole immunohistochemical demonstration of membrane-located EGFRs in biopsies may give some indications for these agents' efficacy in the individual patient. However, these receptors' final association with response rates has to be determined in larger series of patients with known growth factor receptor status.

ACKNOWLEDGEMENTS

The Norwegian Cancer Society financially supported the study. We thank Mette Ingrid, Ellen Hellesylt and Ranveig Røtterud for excellent technical assistance. There were no commercial sponsors for the present study.

REFERENCES

- Barton J, Blackledge G, Wakeling A (2001) Growth factors and their receptors: new targets for prostate cancer therapy. *Urology* **58**: 114–122
- Cobleigh MA, Vogel CL, Tripathy D, Robert NJ, Scholl S, Fehrenbacher L, Wolter JM, Paton V, Shak S, Lieberman G, Slamon DJ (1999) Multinational study of the efficacy and safety of humanized anti-HER2 monoclonal antibody in women who have HER2-overexpressing metastatic breast cancer that has progressed after chemotherapy for metastatic disease. *J Clin Oncol* **17**: 2639–2648
- Craft N, Shostak Y, Carey M, Sawyers CL (1999) A mechanism for hormone-independent prostate cancer through modulation of androgen receptor signaling by the HER-2/neu tyrosine kinase. *Nat Med* **5**: 280–285
- Di Lorenzo G, Tortora G, D'Armiento FP, De Rosa G, Staibano S, Autorino R, D'Armiento M, De Laurentiis M, De Placido S, Catalano G, Bianco AR, Ciardiello F (2002) Expression of epidermal growth factor receptor correlates with disease relapse and progression to androgen-independence in human prostate cancer. *Clin Cancer Res* **8**: 3438–3444
- Fossa A, Lilleby W, Fossa SD, Gaudernack G, Torlakovic G, Berner A (2002) Independent prognostic significance of HER-2 oncoprotein expression in pN0 prostate cancer undergoing curative radiotherapy. *Int J Cancer* **99**: 100–105
- Hernes EH, Fossa SD, Skovlund E (2003). Androgen-independent prostate cancer: the clinical problem of a growing pelvic tumour. *Acta Oncol* **42**: 749–755
- Hernes EH, Linja M, Fossa SD, Visakorpi T, Berner A, Winderen M, Koivisto PA (2000) Hormone-resistant prostate cancer with symptomatic pelvic tumours: patient survival and prognostic factors. *BJU Int* **86**: 240–247
- Kim J, Ahn S, Guo R, Daaka Y (2003) Regulation of epidermal growth factor receptor internalization by G protein-coupled receptors. *Biochemistry* **42**: 2887–2894
- Kuhn EJ, Kurnot RA, Sesterhenn IA, Chang EH, Moul JW (1993) Expression of the *c-erbB-2* (HER-2/neu) oncoprotein in human prostatic carcinoma. *J Urol* **150**: 1427–1433
- Lee H, Akita RW, Sliwkowski MX, Mailhe NJ (2001) A naturally occurring secreted human ErbB3 receptor isoform inhibits heregulin-stimulated activation of ErbB2, ErbB3, and ErbB4. *Cancer Res* **61**: 4467–4473
- Lee MS, Igawa T, Yuan TC, Zhang XQ, Lin FF, Lin MF (2003) ErbB-2 signaling is involved in regulating PSA secretion in androgen-

- independent human prostate cancer LNCaP C-81 cells. *Oncogene* **22**: 781–796
- Lilleby W, Torlakovic G, Torlakovic E, Skovlund E, Fossa SD (2001) Prognostic significance of histologic grading in patients with prostate carcinoma who are assessed by the Gleason and World Health Organization grading systems in needle biopsies obtained prior to radiotherapy. *Cancer* **92**: 311–319
- MacDonald A, Habib FK (1992) Divergent responses to epidermal growth factor in hormone sensitive and insensitive human prostate cancer cell lines. *Br J Cancer* **65**: 177–182
- Mark HF, Feldman D, Das S, Kye H, Mark S, Sun CL, Samy M (1999) Fluorescence *in situ* hybridization study of HER-2/neu oncogene amplification in prostate cancer. *Exp Mol Pathol* **66**: 170–178
- Mellon K, Thompson S, Charlton RG, Marsh C, Robinson M, Lane DP, Harris AL, Horne CH, Neal DE (1992) p53, c-erbB-2 and the epidermal growth factor receptor in the benign and malignant prostate. *J Urol* **147**: 496–499
- Moasser MM, Basso A, Averbuch SD, Rosen N (2001) The tyrosine kinase inhibitor ZD1839 ('Iressa') inhibits HER2-driven signaling and suppresses the growth of HER2-overexpressing tumor cells. *Cancer Res* **61**: 7184–7188
- Olayioye MA, Neve RM, Lane HA, Hynes NE (2000) The ErbB signaling network: receptor heterodimerization in development and cancer. *EMBO J* **19**: 3159–3167
- Osman I, Scher HI, Drobniak M, Verbel D, Morris M, Agus D, Ross JS, Cordon-Cardo C (2001) HER-2/neu (p185neu) protein expression in the natural or treated history of prostate cancer. *Clin Cancer Res* **7**: 2643–2647
- Press MF, Slamon DJ, Flom KJ, Park J, Zhou JY, Bernstein L (2002) Evaluation of HER-2/neu gene amplification and overexpression: comparison of frequently used assay methods in a molecularly characterized cohort of breast cancer specimens. *J Clin Oncol* **20**: 3095–3105
- Reese DM (2001) HER2 protein expression and gene amplification in androgen-independent prostate cancer. *Am J Clin Pathol* **116**: 234–239
- Savinainen KJ, Saramaki OR, Linja MJ, Bratt O, Tammela TL, Isola JJ, Visakorpi T (2002) Expression and gene copy number analysis of ERBB2 oncogene in prostate cancer. *Am J Pathol* **160**: 339–345
- Scher HI, Sarkis A, Reuter V, Cohen D, Netto G, Petrylak D, Lianes P, Fuks Z, Mendelsohn J, Cordon-Cardo C (1995) Changing pattern of expression of the epidermal growth factor receptor and transforming growth factor alpha in the progression of prostatic neoplasms. *Clin Cancer Res* **1**: 545–550
- Sherwood ER, Van-Dongen JL, Wood CG, Liao S, Kozlowski JM, Lee C (1998) Epidermal growth factor receptor activation in androgen-independent but not androgen-stimulated growth of human prostatic carcinoma cells. *Br J Cancer* **77**: 855–861
- Signoretti S, Montironi R, Manola J, Altamari A, Tam C, Bubley G, Balk S, Thomas G, Kaplan I, Hlatky L, Hahnfeldt P, Kantoff P, Loda M (2000) Her-2-neu expression and progression toward androgen independence in human prostate cancer. *J Natl Cancer Inst* **92**: 1918–1925
- Slamon DJ, Leyland-Jones B, Shak S, Fuchs H, Paton V, Bajamonde A, Fleming T, Eiermann W, Wolter J, Pegram M, Baselga J, Norton L (2001) Use of chemotherapy plus a monoclonal antibody against HER2 for metastatic breast cancer that overexpresses HER2. *N Engl J Med* **344**: 783–792
- Suo Z, Nesland JM (2002) Type 1 protein tyrosine kinases in breast carcinoma: a review. *Ultrastruct Pathol* **26**: 125–135
- Xie H, Turner T, Wang MH, Singh RK, Siegal GP, Wells A (1995) *In vitro* invasiveness of DU-145 human prostate carcinoma cells is modulated by EGF receptor-mediated signals. *Clin Exp Metastasis* **13**: 407–419