

Review: Nobel Lecture

The ubiquitin system for protein degradation and some of its roles in the control of the cell division cycle*

A Hershko^{*,1}

¹ The B. Rappaport Faculty of Medicine and the Rappaport Institute for Research in the Medical Sciences, Technion-Israel Institute of Technology, Haifa, Israel

* Corresponding author: A Hershko, Unit of Biochemistry, the B. Rappaport Faculty of Medicine and the Rappaport Institute for Research in the Medical Sciences, Technion-Israel Institute of Technology, 1 Efron Street, P.O. Box 9649, Haifa 31096, Israel. Fax: 9724 853 5773; E-mail: hershko@tx.technion.ac.il

Received 18.5.05; accepted 18.5.05
Edited by G Melino

Abstract

Owing to the intensive research activity on protein synthesis, little attention was paid in the 1950s and 1960s to protein degradation. However, work by my group and others between 1970 and 1990 led to the identification of the ubiquitin-dependent degradation system. We found that this system contains three types of enzymes: E1 ubiquitin – activating enzyme, E2 ubiquitin – carrier enzyme and E3 ubiquitin – protein ligase. The sequential action of these enzymes leads to conjugation of ubiquitin to proteins and then in most cases to their degradation. This review briefly tells the story of how this pathway was discovered describing the main findings that during the years allowed us to draw the complex picture we have now.

Cell Death and Differentiation (2005) 12, 1191–1197.

doi:10.1038/sj.cdd.4401702

Keywords: ubiquitin; protein degradation

Abbreviations: TAT, tyrosine aminotransferase; APF-1, ATP-dependent proteolysis factor 1; cdk, cyclin-dependent kinase; MPF, M phase-promoting factor; APC/C, anaphase-promoting complex/cyclosome; SCF, Skp1-Cuillin1-F-box protein

*Nobel Lecture 2004, © The Nobel Foundation 2004

Introduction

All living cells contain many thousands of different proteins, each of which carries out a specific chemical or physical process. Owing to the importance of proteins in basic cellular functions, there has been a great interest in the problem of how proteins are synthesized. In the 1950s and 1960s of the 20th century, the discovery of the double helical structure of DNA and the cracking of the genetic code focused attention on the mechanisms by which the order of bases in DNA determines the sequence of amino acids in proteins, and on

further molecular mechanisms that regulate the expression of specific genes. Owing to the intensive research activity on protein synthesis, little attention was paid at that time to the fact that many proteins are rapidly degraded to amino acids. This dynamic turnover of cellular proteins had been previously known by the pioneering work of Schoenheimer and co-workers, who were among the first to introduce the use of isotopically labeled compounds to biological studies. They administered ¹⁵N-labeled L-leucine to adult rats, and the distribution of the isotope in body tissues and in excreta was examined. It was observed that less than one-third of the isotope was excreted in the urine, and most of it was incorporated into tissue proteins.¹ Since the weight of the animals did not change during the experiment, it could be assumed that the mass and composition of body proteins also did not change. It was concluded that newly incorporated amino acids must have replaced those in tissue proteins in a process of dynamic protein turnover.¹ Schoenheimer's studies on the dynamic state of proteins and of some other body constituents were published in a small booklet in 1942, soon after his untimely death (Schoenheimer², see Figure 1).

In the subsequent decades, research on protein degradation was neglected, mainly because of the great interest in the mechanisms of protein synthesis, as described above. However, gradually experimental evidence accumulated which indicated that intracellular protein degradation is extensive, selective and has basically important cellular functions. It was observed that abnormal proteins produced by the incorporation of some amino-acid analogues are selectively recognized and are rapidly degraded in cells.³ However, intracellular protein degradation was not thought to be merely a 'garbage disposal' system for the elimination of abnormal or damaged proteins. By the late 1960s, it became apparent that normal proteins are also degraded in a highly selective fashion. The half-life times of different proteins ranged from several minutes to many days, and rapidly degraded proteins usually had important regulatory functions. These properties of intracellular protein degradation and the role of this process in the regulation of the levels of specific proteins were summarized in an excellent review by Schimke and Doyle in 1970.⁴ Thus, it was known at that time that protein degradation had important functions, but it was not known what was the biochemical system that carries out this process at such a high degree of selectivity and sophistication.

My first encounter with protein degradation

I became interested in the problem of how proteins are degraded in cells when I was a post-doctoral fellow in the laboratory of Gordon Tomkins in 1969–1971 at the University

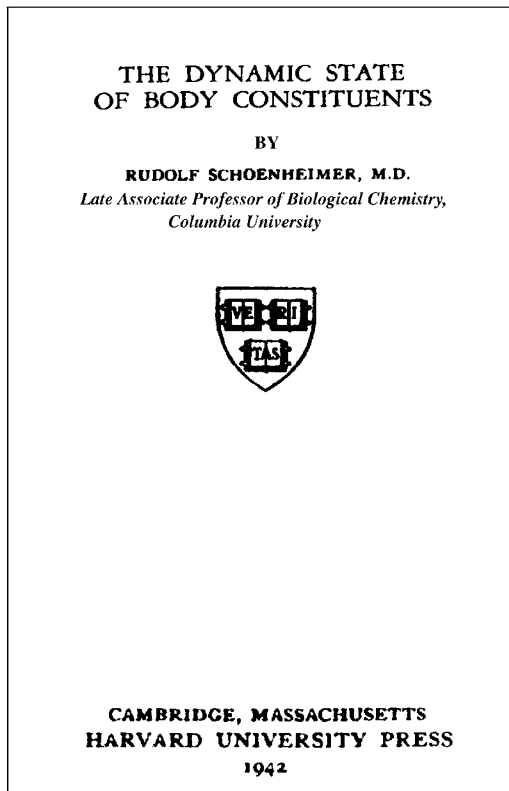


Figure 1 Front page of Schoenheimer's collected lectures, edited by his colleagues soon after his death

of California, San Francisco. At that time, Gordon was mainly interested in the mechanisms by which steroid hormones induce the synthesis of specific proteins.

His model system for this purpose was the synthesis of the enzyme tyrosine aminotransferase (TAT) in cultured hepatoma cells. When I arrived there I saw that it was a large laboratory, with many post-doctoral fellows working on different aspects of the synthesis of TAT. I thought that this was a bit too crowded and I asked Gordon for a different project. He suggested that I should study the degradation of TAT, a process that also regulates the level of this enzyme. This was how I became involved in protein degradation, a problem on which I have been working ever since.

Figure 2 shows one of the first experiments that I did as a post-doctoral fellow in the Tomkins lab. It was quite easy to follow the degradation of TAT: first, hepatoma cells were incubated with a steroid hormone, which caused a great increase in the level of this protein. Then, the hormone was removed by changing the culture medium, and a rapid decline in the level of this protein, due to its degradation, could be observed. As with other regulatory proteins, this protein also had a relatively rapid rate of degradation, with a half-life time of about 2–3 h. I found then that the degradation of TAT was completely arrested by potassium fluoride, an inhibitor of cellular energy production (Hershko and Tomkins⁵ and Figure 2). The effect was not specific to fluoride, because I got similar results with other inhibitors of cellular energy production. These results confirmed and extended earlier findings of Simpson⁶ on the energy-dependence of the

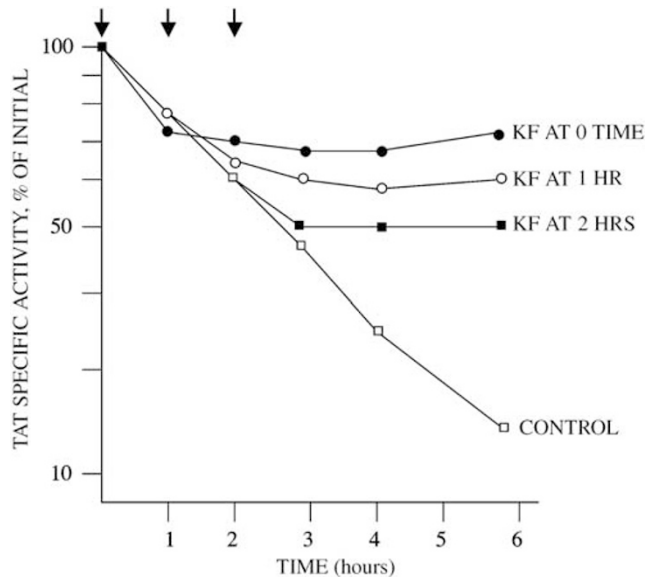


Figure 2 Energy-dependence of the degradation of tyrosine aminotransferase. From Hershko and Tomkins⁵

liberation of amino acids from proteins in liver slices. This observation was later dismissed as being indirect, and that energy is needed to keep the acidic pH inside the lysosomes (described in Hershko *et al.*⁷). However, in the case of TAT, energy was needed for the selective degradation of a specific enzyme, and it did not seem reasonable to assume that engulfment into lysosomes can be responsible for the highly selective degradation of specific cellular proteins. Since ATP depletion also prevented the inactivation of the enzymatic activity of TAT, it was concluded that energy is required at an early step in the process of protein degradation.⁵

I was very much intrigued by the energy-dependence of intracellular protein degradation. Energy is usually needed to synthesize a chemical bond, and not to break a chemical bond. Thus, the action of extracellular proteinases of the digestive system is an exergonic process, that is, it actually releases energy. This suggested that within cells a novel, as yet unknown proteolytic system exists, which presumably uses energy to attain the high selectivity of the degradation of cellular proteins.

Discovery of the role of ubiquitin in protein degradation

Parts of the story of the discovery of the ubiquitin system have been described previously.^{7–9} Following my return to Israel and setting up my own laboratory at the Technion in Haifa, I continued to pursue this problem of how proteins are degraded in cells, and why is energy required for this process. It was clear to me that the only way to find out how a completely novel system works is that of classical biochemistry. This consists of using a cell-free system that faithfully reproduces the process in the test tube, fractionation to separate its different components, purification and characterization of each component and reconstitution of the system from isolated and purified components. A cell-free ATP-dependent proteolytic system from reticulocyte lysates

was first established by Etlinger and Goldberg.¹⁰ Subsequently, my laboratory subjected this system to biochemical fractionation, with the aim of the isolation of its components and the characterization of their mode of action. A great part of this work was carried out by Aaron Ciechanover, who was my graduate student at that time (1976–1981). This work has also received a lot of support, great advice and helpful criticism from Irwin Rose, in whose laboratory at Fox Chase Cancer Center I worked in a sabbatical year in 1977–1978 and in many summers afterwards.

In the initial experiments, we have resolved reticulocyte lysates on DEAE cellulose into two crude fractions: Fraction 1, which contained proteins not adsorbed to the resin, and Fraction 2, which contained all proteins adsorbed to the resin and eluted with high salt. The original aim of this fractionation was to get rid of hemoglobin, which was known to be in Fraction 1, while most nonhemoglobin proteins of reticulocytes were known to be in Fraction 2. We found that neither fraction was active by itself, but ATP-dependent protein degradation could be reconstituted by the combination of the two fractions.¹¹ The active component in Fraction 1 was a small, heat-stable protein; we have exploited its stability to heat treatment for its purification to near homogeneity.

We termed this protein at that time APF-1, for ATP-dependent proteolysis factor 1. The identity of APF-1 with ubiquitin was established later by Wilkinson *et al.*,¹² subsequent to our discovery of its covalent ligation to protein substrates, as described below, Figure 3. Ubiquitin was originally isolated by Goldstein *et al.*¹³ in a search for hormones of the thymus, but was subsequently found to be present in all tissues and eucaryotic organisms, hence its name. The functions of ubiquitin were not known, although it was discovered by Goldknopf and Busch that ubiquitin was conjugated to histone 2A by an isopeptide linkage.¹⁴

The purification of APF-1/ubiquitin from Fraction 1 was the key to the elucidation of the mode of its action in the proteolytic system. It looked smaller than most enzymes, so at first we thought that it might be a regulatory subunit of some enzyme (such as a protein kinase or an ATP-dependent protease) present in Fraction 2. To test this notion, we looked for the association of APF-1/ubiquitin with some protein in Fraction 2. For this purpose, purified radiolabeled APF-1/ubiquitin was incubated with Fraction 2 in the presence or absence of ATP, and was subjected to gel filtration chromatography. A marked ATP-dependent association of APF-1/ubiquitin with high molecular weight material was observed.¹⁵ It was very surprising to find, however, that ubiquitin was bound by covalent amide linkage, as indicated by the resistance of high molecular weight derivative to alkali, hydroxylamine and boiling with SDS in the presence of mercaptoethanol.¹⁵ The analysis of reaction products by SDS-polyacrylamide gel electrophoresis showed that ubiquitin was ligated to a great number of endogenous proteins. Since crude Fraction 2 from reticulocytes contained not only enzymes but also endogenous substrates of the proteolytic system, we began to suspect that ubiquitin may be linked to protein substrates, rather than to an enzyme. We indeed found that proteins that are good (though artificial) substrates of the ATP-dependent proteolytic system, such as lysozyme, are conjugated to ubiquitin.¹⁶ The original experiment is shown in Figure 3. We

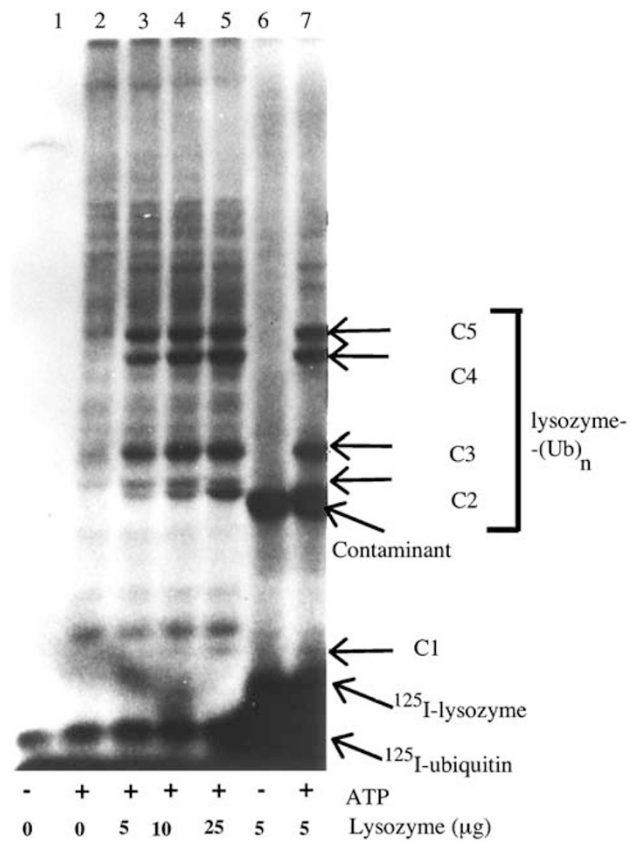


Figure 3 Discovery of covalent ligation of ubiquitin to substrate protein. See the text. From Hershko *et al.*¹⁶

found that similar high-molecular weight derivatives were formed when ¹²⁵I-labeled ubiquitin was incubated with unlabeled lysozyme (Figure 3, lanes 3–5), or when ¹²⁵I-labeled lysozyme was incubated with unlabeled ubiquitin in the presence of ATP (Figure 3, lane 7). Based on these observations, we proposed that proteins are targeted for degradation by covalent ligation to APF-1/ubiquitin.¹⁶

Original hypothesis from 1980, formulated jointly with Irwin Rose, is shown in Figure 4a. We proposed that a putative enzyme, which we called ‘APF-1-protein amide synthetase’, ligates multiple molecules of ubiquitin to the protein substrate (Step 1) and then some other enzyme degrades proteins that are linked to several molecules of ubiquitin (Step 3), and finally free and reusable ubiquitin is released¹⁵ (Step 4) (Figure 4a).

According to this proposal, ubiquitin is essentially a tag, which when attached to a protein, dooms this protein to be degraded.

Identification of enzymes of the ubiquitin-mediated proteolytic system

In subsequent work, we tried to isolate and characterize enzymes of the ubiquitin pathway, using the same biochemical fractionation–reconstitution approach. The original proposal (Figure 4a) was found to be essentially correct, but much important detail was added. Our present knowledge of the main enzymatic steps in the ubiquitin-mediated proteolytic pathway is shown in Figure 4b (reviewed in Hershko and

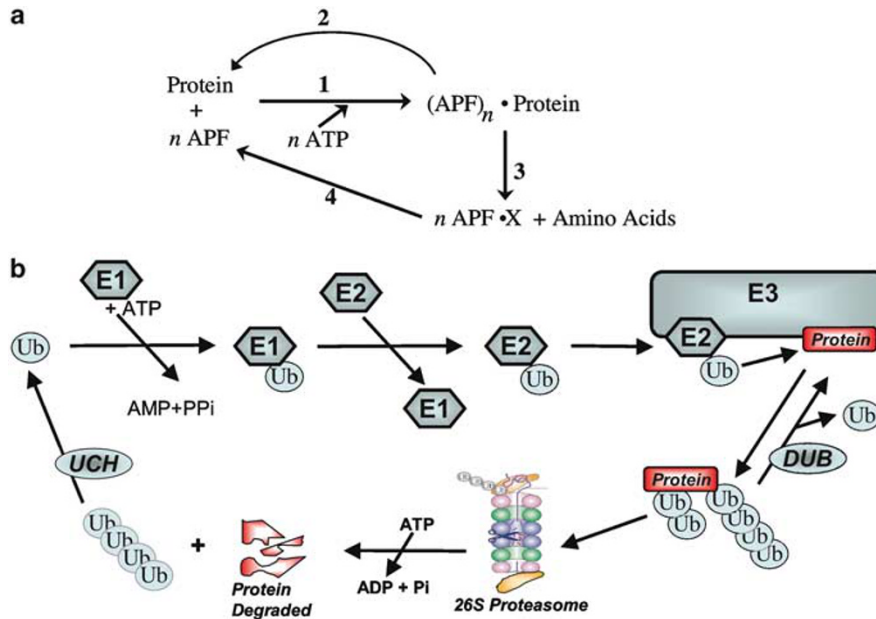


Figure 4 The ubiquitin system then and now. (a) Original proposal of the sequence of events in protein degradation. See the text; from Hershko *et al.*¹⁶ (b) Our current view of the main enzymatic reactions in ubiquitin-mediated protein degradation. See the text. Ub, ubiquitin; DUB, deubiquitylating enzyme; UCH, ubiquitin carboxyl-terminal hydrolase

Ciechanover¹⁷). This scheme summarizes about 10 years of our work (from 1980 to 1990), as well as that of some other researchers. Thus, we found that ubiquitin is ligated to proteins not by one enzyme, but by the sequential action of three enzymes. These are the ubiquitin-activating enzyme E1,¹⁸ a ubiquitin-carrier protein E2¹⁹ and a ubiquitin-protein ligase E3.¹⁹ E1 carries out the ATP-dependent activation of the carboxy-terminal glycine residue of ubiquitin²⁰ by the formation of ubiquitin adenylate, followed by the transfer of activated ubiquitin to a thiol site of E1 with the formation of thioester linkage.^{18,21}

Activated ubiquitin is transferred to a thiol site of E2 by transacylation, and is then further transferred to an amino group of the protein substrate in a reaction that requires E3.¹⁹ We found that the role of E3 is to bind specific protein substrates.²² Based on this observation, it was proposed that the selectivity of ubiquitin-mediated protein degradation is mainly determined by the substrate specificity of different E3 enzymes.²³ This notion was verified by subsequent work in many laboratories on the selective action of a large number of different E3 enzymes on their specific protein substrates.

Proteins ligated to polyubiquitin chains are degraded by a large 26S proteasome complex (discovered by other investigators) and free ubiquitin is released by the action of ubiquitin-C-terminal hydrolases or isopeptidases (reviewed in Hershko and Ciechanover¹⁷).

Mechanisms of the degradation of cyclin B: discovery of the cyclosome/anaphase-promoting complex

All our studies on the basic biochemistry of the ubiquitin pathway were carried out in the reticulocyte system, using

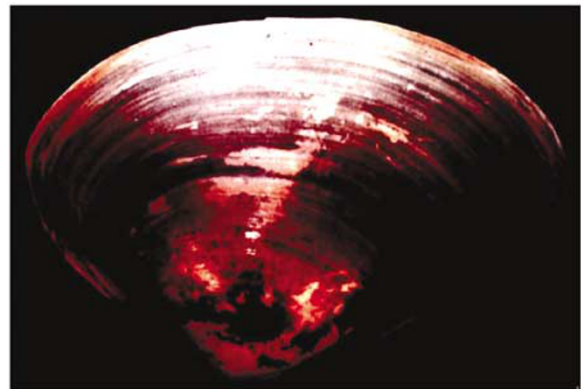


Figure 5 The north Atlantic surf clam, *Spisula solidissima*

artificial model protein substrates. Although many gaps remained in our understanding of the basic biochemical processes of the ubiquitin system, at around 1990, I thought that it was important to turn to the question of how is the degradation of specific cellular proteins carried out by the ubiquitin system in a selective and regulated fashion. This is how I became interested in the roles of the ubiquitin system in the cell division cycle, because the levels of many cell cycle regulatory proteins oscillate in the cell cycle. I first worked on the biochemical mechanisms of the degradation of cyclin B in the early embryonic cell cycle. Cyclin B was discovered by Hunt and co-workers as a protein that is degraded at the end of each mitosis.²⁴ It was subsequently found that it is a positive regulatory subunit of protein kinase Cdc2/Cdk1 (cyclin-dependent kinase 1) (reviewed in Dorée and Hunt²⁵). In the early embryonic cell cycles, cyclin B is synthesized during the interphase and then is rapidly degraded during the metaphase–anaphase transition. The active protein kinase

Cdk1-cyclin B (also called MPF or M phase-promoting factor) is formed at the beginning of mitosis and promotes entry of cells into mitosis. The inactivation of MPF, caused by the degradation of cyclin B, is required for exit from mitosis. Our question was: what is the system that degrades cyclin B, why does it act only at the end of mitosis?

I have approached this problem again by biochemistry, and here the quest for a cell-free system led me to marine biology and to the surf clam, *Spisula solidissima* (Figure 5). This is a large clam that produces large numbers of oocytes. Luca and Ruderman²⁶ established a cell-free system from fertilized clam oocytes that faithfully reproduced cell cycle stage-specific degradation of mitotic cyclins. In this work, I was greatly helped first by Robert Palazzo and Leonard Cohen, and then by a collaboration with Joan Ruderman. Initial fractionation of the system²⁷ showed that in addition to E1, two novel components were required for the ligation of cyclin B to ubiquitin: these were a specific E2 called E2-C and an E3-like activity, which in clam extracts was associated with particulate material. We have solubilized the E3-like activity and found it to be a large (~1500 kDa) complex that has ubiquitin ligase activity on mitotic cyclins. The activity of this enzyme is regulated in the cell cycle: it is inactive in the interphase and becomes active at the end of mitosis, an event that requires the action of Cdk/cyclin B.²⁸ We called this ubiquitin ligase complex the cyclosome, to denote its large size and important roles in cell cycle regulation.²⁸ A similar complex was isolated at about the same time from extracts of *Xenopus* eggs by the Kirschner laboratory and was called the anaphase-promoting complex.²⁹

Parallel genetic work in yeast by the Nasmyth group identified several subunits of the anaphase-promoting complex/cyclosome (or APC/C, as it is now called) as products of genes required for exit from mitosis.³⁰ Thus, the discovery of APC/C was due to the convergence of biochemical work with genetic work. Subsequent work by other investigators showed that the APC/C is also involved in the degradation of several other important cell cycle regulators, such as securin, an inhibitor of anaphase onset (reviewed in Zachariae and Nasmyth³¹ and Peters^{31,32}). In addition, the APC/C is the target of the spindle assembly checkpoint system, an important surveillance mechanism that allows the separation of sister chromatids only after they are all properly attached to the mitotic spindle (reviewed in Bharadwaj and Yu³³).

Role of SCF^{SKP2} ubiquitin ligase in the degradation of the CDK inhibitor P27^{Kip1}

Another problem on which I have been working recently, in collaboration with Michele Pagano, is on the mode of the degradation of the mammalian Cdk inhibitor P27^{Kip1}. This inhibitor is present at high levels in G0/G1, preventing the action of Cdk2/cyclin E and Cdk2/cyclin A to drive cells into the S-phase. Following growth stimulation by mitogenic agents, p27 is rapidly degraded, allowing the action of these kinases to promote entry into the S-phase (reviewed in Slingerland and Pagano³⁴). It has been shown that p27 is degraded by the ubiquitin system.³⁵ We have tried to identify the ubiquitin ligase system that targets p27 for degradation. It was first

found that the process of p27-ubiquitin ligation can be faithfully reproduced *in vitro* in extracts of HeLa cells. Thus, the rate of ligation of p27 to ubiquitin was much greater in extracts from growing cells than in extracts from G1-arrested cells. It was also found that the phosphorylation of p27 on T187 by Cdk2/cyclin E is required for p27-ubiquitin ligation *in vitro*,³⁶ as is the case *in vivo*.³⁷ Having established that the cell-free system accurately reflects the characteristics of p27 ubiquitylation in cells, we then proceeded to utilize this cell-free system to identify the ubiquitin ligase (E3 enzyme) involved in this process. Owing to the requirement for the phosphorylation of the p27 substrate, we suspected that an SCF (Skp1-Cullin1-F-box protein)-type ubiquitin ligase might be involved. SCF complexes comprise a large family of ubiquitin-protein ligases, whose variable F-box protein subunits recognize a variety of phosphorylated protein substrates (reviewed in Deshaies³⁸). We have identified Skp2 (S-phase kinase-associated protein 2) as the specific F-box protein component of an SCF complex that ubiquitylates p27, based on the following biochemical evidence: (a) immunodepletion of extracts from proliferating cells with an antibody directed against Skp2 abolished p27-ubiquitin ligation activity; (b) addition of recombinant, purified Skp2 to such immunodepleted extracts completely restored p27-ubiquitin ligation; (c) specific binding of p27 to Skp2, dependent upon phosphorylation of p27 on T187, could be demonstrated *in vitro*. Combined with further *in vivo* evidence from the Pagano lab, Skp2 was identified as the specific and rate-limiting component of an SCF complex that targets p27 for degradation.³⁹ It is notable that levels of Skp2 also oscillate in the cell cycle, being very low in G1, increasing upon entry of cells into the S-phase and declining again later on.⁴⁰ These fluctuations in Skp2 levels provide an important mechanism for cell cycle stage-specific regulation of p27 degradation.

We have next tried to reconstitute the SCF^{SKP2} system that ligates p27 to ubiquitin from purified components. We found that in addition to the known components (Cullin 1, Skp1, Skp2, Roc1, Cdk2/cyclin E, E1 and the E2 enzyme Cdc34), an additional protein factor is required for this reaction. We have purified the missing factor from extracts of HeLa cells and have identified it as Cks1 (cyclin kinase subunit 1), both by mass spectrometry sequencing and by functional reconstitution with recombinant Cks1 protein.⁴¹ Cks1 belongs to the highly conserved Suc1/Cks family of proteins, which bind to some cyclin-dependent kinases (cdks) and to phosphorylated proteins, and are essential for several cell cycle transitions.⁴² Human Cks1, but not other members of this protein family, reconstituted p27-ubiquitin ligation in a completely purified system. While all members of the Suc1/Cks protein family have Cdk-binding and anion-binding sites, only mammalian Cks1 binds to Skp2 and promotes the association of Skp2 with p27 phosphorylated on T187.⁴¹ Similar results were independently obtained by another research group.⁴³ More recently, we have mapped the Skp2-binding site of Cks1 by site-directed mutagenesis and found that it is located on a region that includes the $\alpha 2$ and $\alpha 1$ helices, well separated from the other two binding sites of Cks1. All three binding sites of Cks1 are required for its action to promote p27-ubiquitin ligation and for the association of Skp2 with T-187-phosphorylated p27.⁴⁴ Based on these and on further observations, a model was



Figure 6 At the end of summer of 1979 in Fox Chase Cancer Center, Philadelphia. Seated left to right: Avram Hershko, Sandy Goldman, Jessie Warms, Hanna Heller, Standing left to right: Zelda Rose, Arthur Haas, Aaron Ciechanover, Mary Williamson, Irwin Rose, Keith Wilkinson and Leonard Cohen (last three people standing on the right side not identified)

proposed according to which Cks1 serves as an adaptor necessary for enzyme–substrate interaction: the Skp2–Cks1 complex binds to phosphorylated p27, a process that requires the anion-binding site of Cks1. The affinity of Skp2 to the substrate is then further strengthened by the association of the Cdk-binding site of Cks1 with Cdk2/cyclin E, to which phosphorylated p27 is tightly bound.⁴⁴ It is notable that the expression of Cks1 also oscillates in the cell cycle,^{45,46} providing an additional mechanism for the regulation of p27 degradation.

Concluding remarks

The ubiquitin system has come a long way since its humble beginnings described in this paper. Ubiquitin-mediated degradation of positively or negatively acting regulatory proteins is involved in a variety of cellular processes such as the control of cell division, signal transduction, transcriptional regulation, immune and inflammatory responses, embryonic development, apoptosis and circadian clocks, to mention but a few. The involvement of malfunction of ubiquitin-mediated processes in diseases such as certain cancers, and the therapeutic implications of this knowledge, are also beginning to emerge. I am quite certain that we are still seeing only the tip of the iceberg of the multitude of functions of the ubiquitin system in health and disease. The main lesson from the story of the discovery of the ubiquitin system that I would like to convey, mainly to young researchers, is the continued importance of biochemistry in modern biomedical research. In his book *For the Love of Enzymes* Arthur Kornberg divided the history of biomedical research into four main periods. First were the ‘microbe hunters’, the great microbiologists of the 19th century. They were followed by the ‘vitamin hunters’, the discoverers of the vitamins. Next were the ‘enzyme hunters’ – the biochemists, followed by the ‘gene hunters’ – the molecular geneticists. However, the times of enzyme (or

protein) hunting are far from being over. With the completion of the human genome project, all genes have been ‘hunted’, but we know the functions of only about one-third of our genes. If we want to know what are the roles of the rest of our genes in health and disease, we shall have to continue to use biochemistry, in combination with functional genetics, well into the future. Our story shows that the ubiquitin system could not have been discovered without biochemical approaches. We could not have a clue to the ubiquitin tagging mechanisms by genetics alone, or by the sequence of genes of the ubiquitin system. On the other hand, once the basic biochemistry was known, molecular genetic approaches were essential for the discovery of the multitude of functions of the ubiquitin proteolytic pathway. So my advice to young investigators in biomedical sciences is: if you have a problem that cannot be solved by molecular genetics alone, do not be afraid to use biochemistry, do not hesitate to enter the cold room, and do not be wary of approaching the FPLC machine!

Acknowledgements

In experimental sciences, including biochemistry, discoveries are not made by a single person, but require the assistance of dedicated research teams and the help of friends, colleagues and collaborators. In my laboratory at the Technion, Haifa, I was very fortunate to receive devoted help, at different times over a period of more than 30 years, from Dvora Ganoth, Hanna Heller, Esther Eytan, Sarah Elias, Clara Segal and from my wife, Judith Hershko. Among my former graduate students, Aaron Ciechanover did tremendous work in the exciting times of the discovery of ubiquitin-protein ligation 25 years ago. Subsequently, many other graduate students (too many to list here) did very important work on the basic biochemistry of the ubiquitin system and more recently, on some roles of this system in cell cycle control. Out of my several friends, collaborators, mentioned in this paper, Irwin Rose had a very special role. My association with Ernie started with a sabbatical year in his laboratory in Fox Chase Cancer Center, Philadelphia, in 1977–1978 (see also

accompanying biography). During this year, I continued to work on the initial fractionation of the reticulocyte system and the purification of ubiquitin, which we started in Haifa. In the following summer of 1979, Ernie invited me back to his laboratory, together with my graduate student Aaron Ciechanover and research assistant Hanna Heller. When we got there we already knew, from work done in the Haifa lab, that ubiquitin bound to proteins in an ATP-dependent process. However, the discovery that a covalent amide bond is formed between ubiquitin and the substrate protein was made together with Ernie Rose in that summer in Philadelphia. A group picture, taken at the end of this memorable summer of 1979 at Fox Chase Center, included the people involved (Figure 6). The results of this summer's work were reported in Hershko *et al.*¹⁶ This Review was possible because of kind help of the Nobel Foundation in Stockholm, <http://nobelprize.org> (© The Nobel Foundation 2004).

References

- Schoenheimer R, Ratner S and Rittenberg D (1939) Studies in protein metabolism. X. The metabolic activity of body proteins investigated with L (–)-leucine containing two isotopes. *J. Biol. Chem.* 130: 703–732
- Schoenheimer R (1942) *The Dynamic State of Body Constituents* Cambridge, Mass: Harvard University Press
- Rabinowitz M and Fisher JM (1964) *Biochim. Biophys. Acta* 91 91: 313–322
- Schimke RT and Doyle D (1970) Control of enzyme levels in animal tissues. *Annu. Rev. Biochem.* 39: 929–976
- Hershko A and Tomkins GM (1971) Studies on the degradation of tyrosine aminotransferase in hepatoma cells in culture. Influence of the composition of the medium and adenosine triphosphate dependence. *J. Biol. Chem.* 246: 710–714
- Simpson MV (1953) The release of labeled amino acids from the proteins of rat liver slices. *J. Biol. Chem.* 201: 143–154
- Hershko A, Ciechanover A and Varshavsky A (2000) The ubiquitin system. *Nat. Med.* 6: 1073–1081
- Hershko A (1996) Lessons from the discovery of the ubiquitin system. *Trends Biochem. Sci.* 21: 445–449
- Wilkinson KD (2004) Essay. *Cell* 119: 741–745
- Etlinger JD and Goldberg AL (1977) A soluble ATP-dependent proteolytic system responsible for the degradation of abnormal proteins in reticulocytes. *Proc. Natl. Acad. Sci. USA* 74: 54–58
- Ciechanover A, Hod Y and Hershko A (1978) A heat-stable polypeptide component of an ATP-dependent proteolytic system from reticulocytes. *Biochem. Biophys. Res. Commun.* 81: 1100–1105
- Wilkinson KD, Urban MK and Haas AL (1980) Ubiquitin is the ATP-dependent proteolysis factor I of rabbit reticulocytes. *J. Biol. Chem.* 255: 7529–7532
- Goldstein G, Scheid M, Hammerling U, Boyse EA, Schlesinger DH and Niall HD (1975) Isolation of a polypeptide that has lymphocyte-differentiating properties and is probably represented universally in living cells. *Proc. Natl. Acad. Sci. USA* 72: 11–15
- Goldknopf IL and Busch H (1977) Isopeptide linkage between nonhistone and histone 2A polypeptides of chromosomal conjugate-protein A24. *Proc. Natl. Acad. Sci. USA* 74: 864–868
- Ciechanover A, Heller H, Elias S, Haas AL and Hershko A (1980) ATP-dependent conjugation of reticulocyte proteins with the polypeptide required for protein degradation. *Proc. Natl. Acad. Sci. USA* 77: 1365–1368
- Hershko A, Ciechanover A, Heller H, Haas AL and Rose IA (1980) Proposed role of ATP in protein breakdown: conjugation of proteins with multiple chains of the polypeptide of ATP-dependent proteolysis. *Proc. Natl. Acad. Sci. USA* 77: 1783–1786
- Hershko A and Ciechanover A (1998) The ubiquitin system. *Annu. Rev. Biochem.* 67: 425–479
- Ciechanover A, Heiler H, Katz-Etzion R and Hershko A (1981) Activation of the heat-stable polypeptide of the ATP-dependent proteolytic system. *Proc. Natl. Acad. Sci. USA* 78: 761–765
- Hershko A, Heller H, Elias S and Ciechanover A (1983) Components of ubiquitin-protein ligase system. Resolution, affinity purification, and role in protein breakdown. *J. Biol. Chem.* 258: 8206–8214
- Hershko A, Ciechanover A and Rose IA (1981) Identification of the active amino acid residue of the polypeptide of ATP-dependent protein breakdown. *J. Biol. Chem.* 256: 1525–1528
- Haas AL, Warms JV, Hershko A and Rose IA (1982) Ubiquitin-activating enzyme. Mechanism and role in protein-ubiquitin conjugation. *J. Biol. Chem.* 257: 2543–2548
- Hershko A, Heiler H, Eytan E and Reiss Y (1986) The protein substrate binding site of the ubiquitin-protein ligase system. *J. Biol. Chem.* 261: 11992–11999
- Hershko A (1988) Ubiquitin-mediated protein degradation. *J. Biol. Chem.* 263: 15237–15240
- Evans T, Rosenthal ET, Youngbloom J, Distel D and Hunt T (1983) Cyclin: a protein specified by maternal mRNA in sea urchin eggs that is destroyed at each cleavage division. *Cell* 33: 389–396
- Dorée M and Hunt T (2002) From Cdc2 to Cdk1: when did the cell cycle kinase join its cyclin partner? *J. Cell Sci* 115: 2461–2464
- Luca FC and Ruderman JV (1989) Control of programmed cyclin destruction in a cell-free system. *J. Cell Biol.* 109: 1895–1909
- Hershko A, Ganoh D, Sudakin V, Dahan A, Cohen LH, Luca FC, Ruderman J and Eytan E (1994) Components of a system that ligates cyclin to ubiquitin and their regulation by the protein kinase cdc2. *J. Biol. Chem.* 269: 4940–4946
- Sudakin V, Ganoh D, Dahan A, Heller H, Hershko J, Luca FC, Ruderman JV and Hershko A (1995) *Mol. Biol. Cell* 6: 185–198
- King RW, Peters JM, Tugendreich S, Rolfe M, Hieter P and Kirschner MW (1995) A 20s complex containing CDC27 and CDC16 catalyzes the mitosis-specific conjugation of ubiquitin to cyclin B. *Cell* 81: 279–288
- Iringer S, Piatti S, Michaelis C and Nasmyth K (1995) Genes involved in sister chromatid separation are needed for b-type cyclin proteolysis in budding yeast. *Cell* 81: 269–277
- Zachariae W and Nasmyth K (1999) Whose end is destruction: cell division and the anaphase-promoting complex. *Genes Dev.* 13: 2039–2058
- Peters JM (2002) The anaphase-promoting complex: proteolysis in mitosis and beyond. *Mol. Cell* 9: 931–943
- Bharadwaj R and Yu H (2004) The spindle checkpoint, aneuploidy, and cancer. *Oncogene* 23: 2016–2027
- Slingerland J and Pagano M (2000) Regulation of the Cdk inhibitor p27 and its deregulation in cancer. *J. Cell Physiol.* 183: 10–17
- Pagano M, Tam SW, Theodoras AM, Beer-Romano P, Del Sal G, Chau V, Yew PR, Draetta GF and Rolfe M (1995) *Science* 269: 682–685
- Montagnoli A, Fiorr F, Eytan E, Carrano AC, Draetta GF, Hershko A and Pagano M (1999) Ubiquitination of p27 is regulated by Cdk-dependent phosphorylation and trimeric complex formation. *Genes Dev.* 13: 1181–1189
- Vlach J, Hennecke S and Amati B (1997) Phosphorylation-dependent degradation of the cyclin-dependent kinase inhibitor p27Kip1. *EMBO J.* 16: 5334–5344
- Deshaias RJ (1999) Scf and Cullin/Ring H2-based ubiquitin ligases. *Annu. Rev. Cell Dev. Biol.* 15: 435–467
- Carrano A, Eytan E, Hershko A and Pagano M (1999) SKP2 is required for ubiquitin-mediated degradation of the CDK inhibitor p27. *Nat. Cell Biol.* 1: 193–199
- Lisztwan J, Marti A, Sutterluti H, Gstaiger M, Wirbelauer C and Krek W (1998) Association of human CUL-1 and ubiquitin-conjugating enzyme CDC34 with the F-box protein p45SKP2: evidence for evolutionary conservation in the subunit composition of the CDC34–SCF pathway. *EMBO J.* 17: 368–383
- Ganoh D, Bornstein G, KoTK, Larsen B, Tyers M, Pagano M and Hershko A (2001) The cell-cycle regulatory protein Cks1 is required for SCFSkp2-mediated ubiquitinylation of p27. *Nat. Cell Biol.* 3: 321–324
- Harper JW (2001) *Curr. Biol.* 11: R431–R435
- Spruck C, Strohmaier H, Watson M, Smith APL, Ryan A, Krek W and Reed SI (2001) A CDK-independent function of mammalian Cks1: targeting of SCFSkp2 to the CDK inhibitor p27Kip1. *Mol. Cell* 7: 639–650
- Sitry D, Seeliger MA, Ko TK, Ganoh D, Breward SE, Itzhaki LS, Pagano M and Hershko A (2002) *J. Biol. Chem.* 277: 42233–42240
- Richardson HE, Stueland CS, Thomas J, Russet P and Reed SI (1990) Human cDNAs encoding homologs of the small p34Cdc28/Cdc2-associated protein of *Saccharomyces cerevisiae* and *Schizosaccharomyces pombe*. *Genes Dev.* 4: 1332–1344
- Bashir T, Dorrello NV, Amador V, Guardavaccaro D and Pagano M (2004) Control of the SCFSkp2–Cks1 ubiquitin ligase by the APC/CCdh1 ubiquitin ligase. *Nature* 428: 190–193