

## CORRIGENDUM

# Stage 2 of the Wellcome Trust UK–Irish bipolar affective disorder sibling-pair genome screen: evidence for linkage on chromosomes 6q16–q21, 4q12–q21, 9p21, 10p14–p12 and 18q22

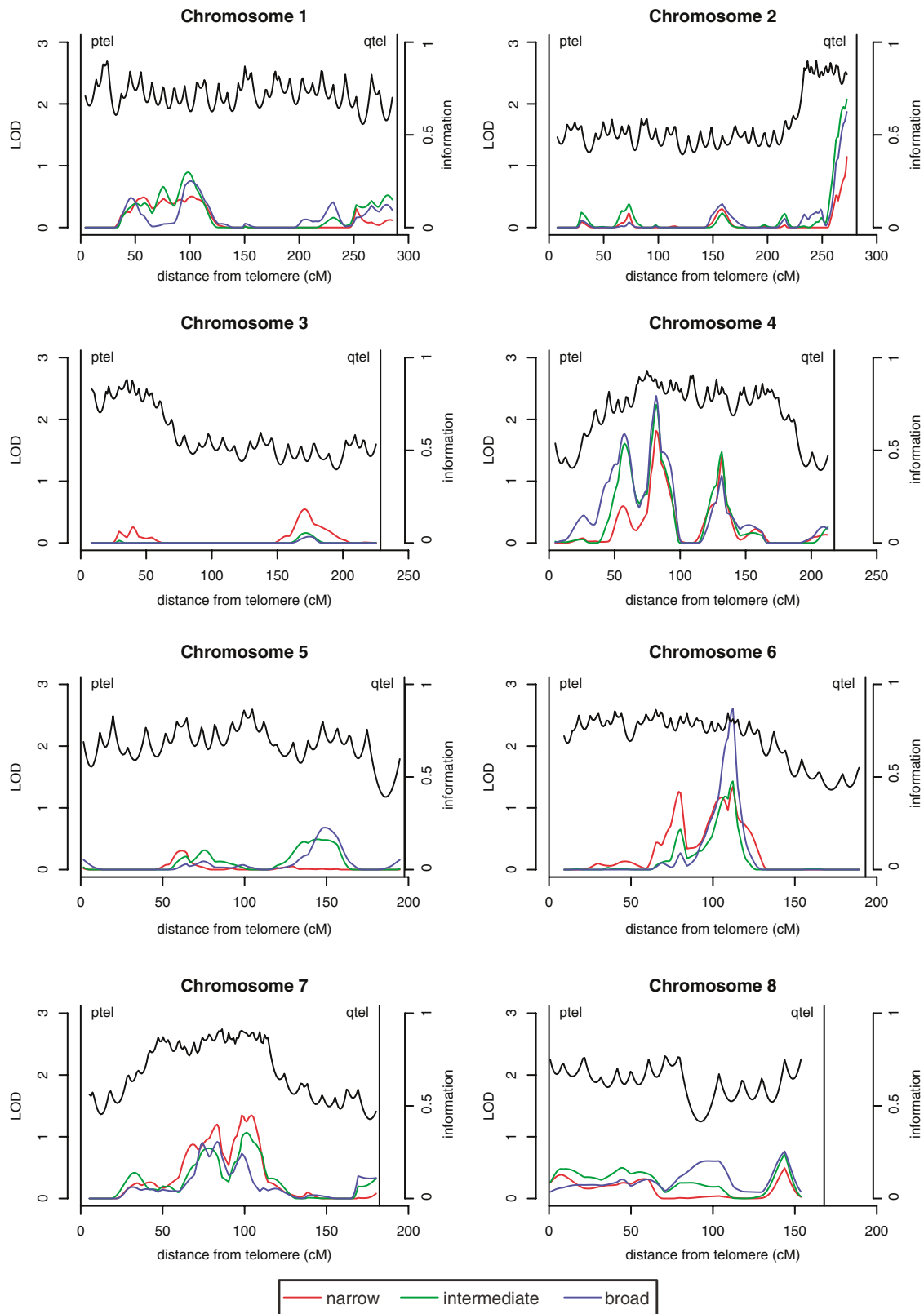
D Lambert, F Middle, ML Hamshere, R Segurado, R Raybould, A Corvin, E Green, E O'Mahony, I Nikolov, T Mulcahy, S Haque, S Bort, P Bennett, N Norton, MJ Owen, G Kirov, C Lendon, L Jones, I Jones, P Holmans, M Gill and N Craddock

*Molecular Psychiatry* (2006) 11, 1140–1143. doi:10.1038/sj.mp.4001917

**Correction to:** *Molecular Psychiatry* (2005) 10, 831–841.  
doi:10.1038/sj.mp.4001684

key detailing the line colors. The key is indicated in the revised figure on pages 1141–1143.

Following publication of the above article, the authors noticed that Figure 1 did not include a color



**Figure 1** Affected sibling pair maximum likelihood scores plots (*MLS*, *primary y-axis*) across all chromosomes, under each of three diagnostic models. Also shown is the marker information content (*secondary y-axis*). Distances on *x-axis* are in centiMorgan (Kosambi). (See end of figure for colour coding.) The *MLS* data were generated using GENEHUNTER version 2.1 for autosomes and MAPMAKER/SIBS for the X-chromosome.

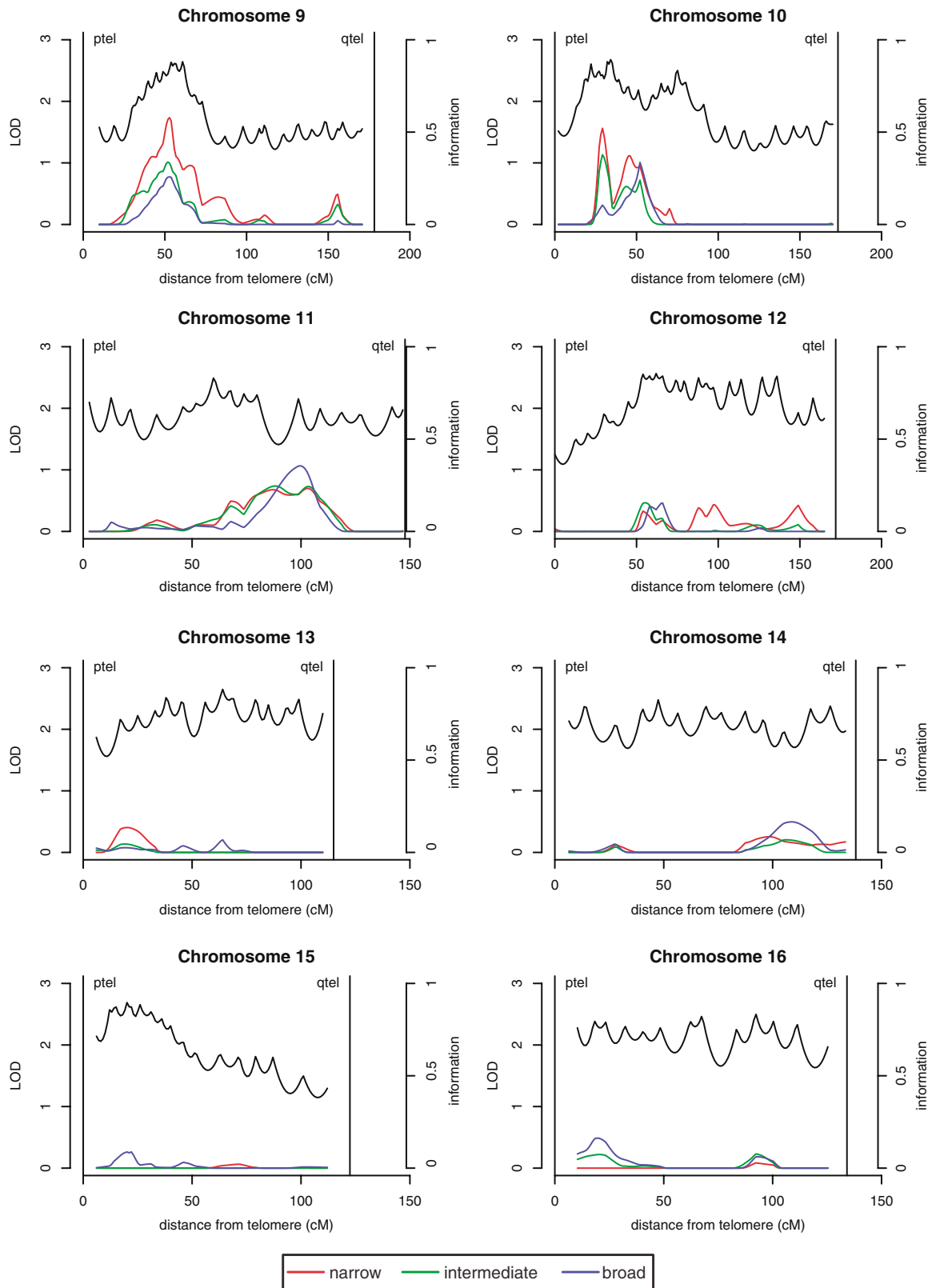


Figure 1 Continued.

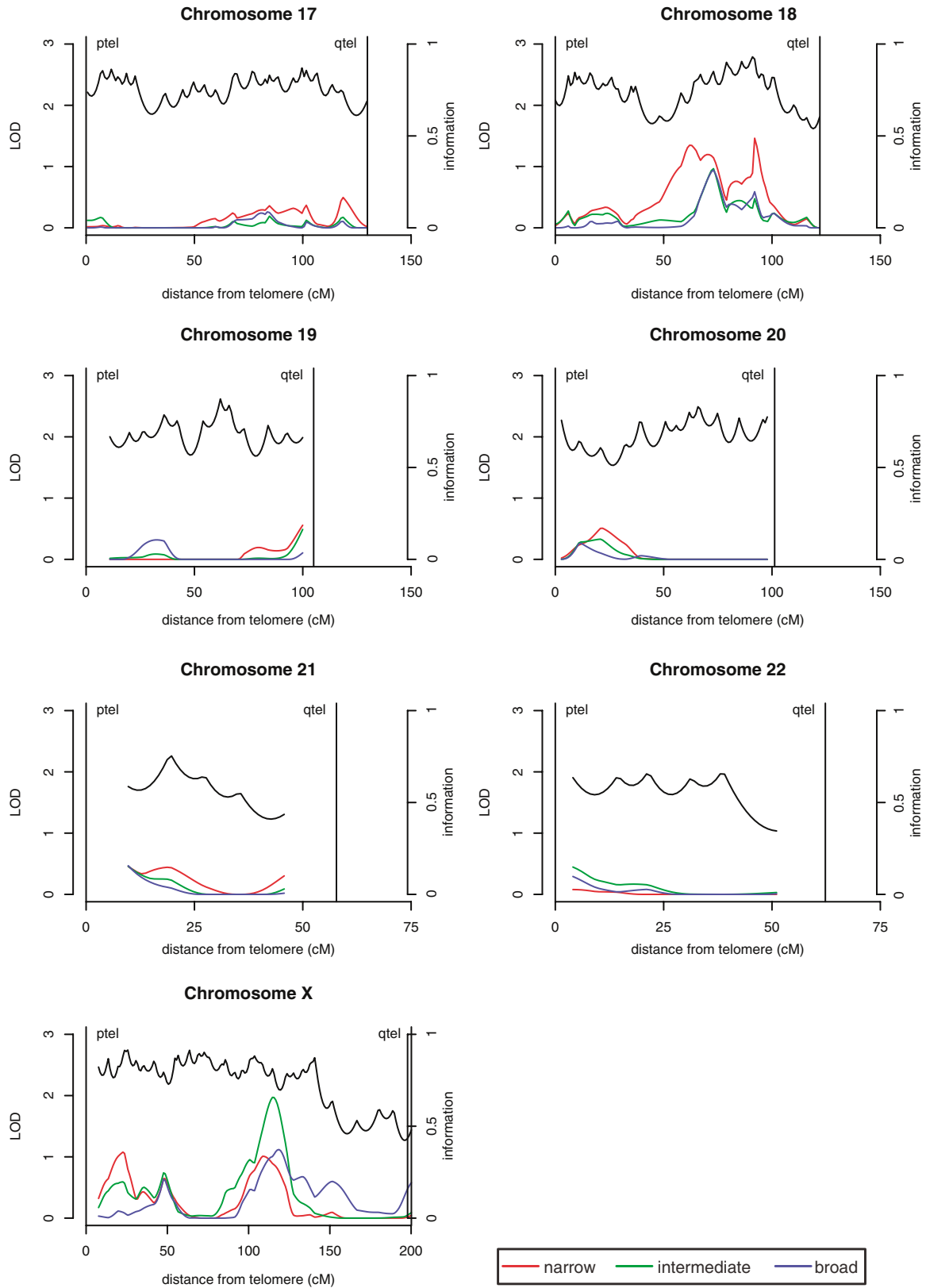


Figure 1 Continued.