



ERRATUM

Clonality analysis of hematopoietic cell lineages in acute myeloid leukemia and translocation (8;21): only myeloid cells are part of the malignant clone

K van Lom *et al*, *Leukemia* 1997; **11**: 202–205

Owing to an error during the printing process, in the paper 'Clonality analysis of hematopoietic cell lineages in acute myeloid leukemia and translocation (8;21): only myeloid cells are part of the malignant clone' by K van Lom *et al*, *Leukemia* 1997; **11**: 202–205, Figure 1b does not represent the correct information, the correct version is shown below.

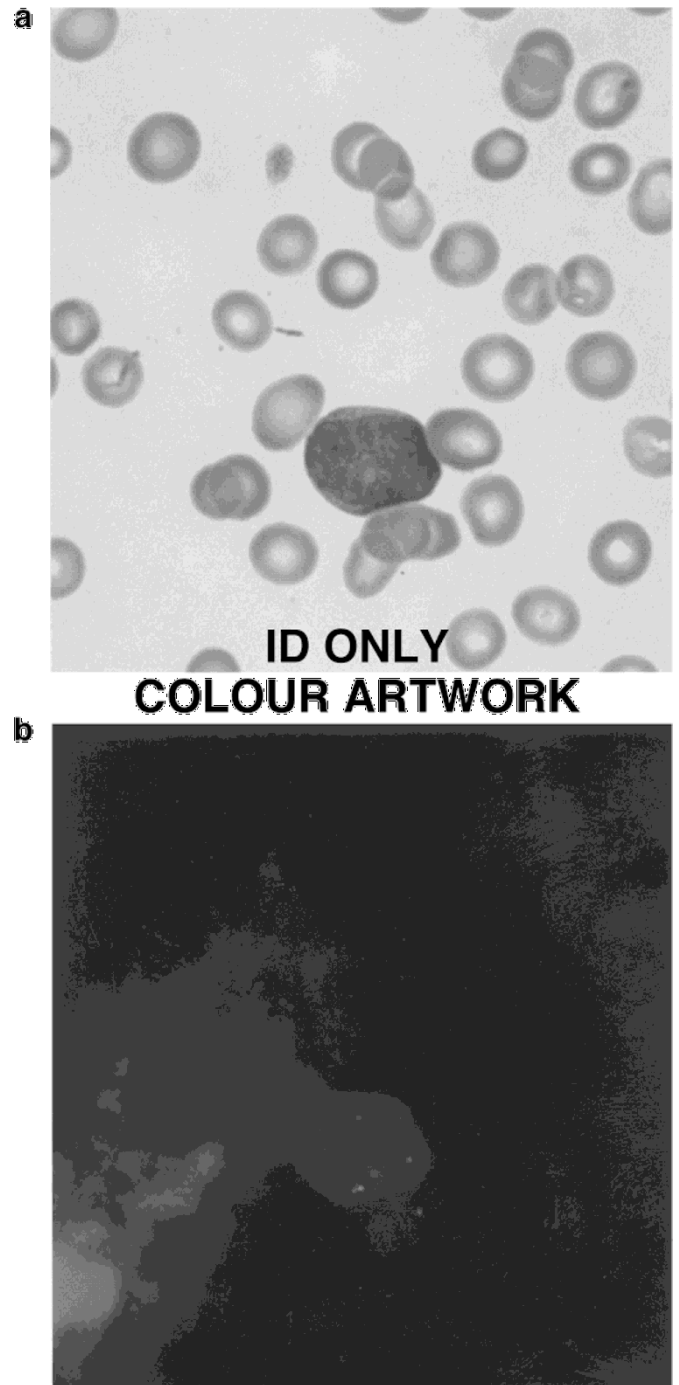


Figure 1 (a) MGG stained blast (patient No. 5). (b) FISH on the same cell with probes specific for the breakpoint regions of No. 8 (q22) (green spots) and No. 21 (q22) (red spots).