

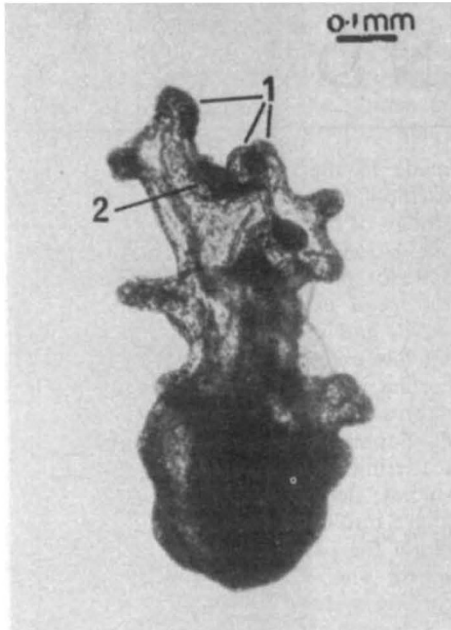
nents of the new popular concept of controls on protein synthesis at the cytoplasmic level. Further he believed that the effects of growth hormone on RNA synthesis were secondary to its effects on protein synthesis. These concepts were the basis for his most recent research on the mechanism of initiation of protein synthesis and the interrelationship between protein and RNA synthesis. In summary he has made a major contribution to the development of the ideas and concepts which are now known as molecular biology and their application to the field of hormonal control of protein and nucleic acid metabolism, particularly the control of protein synthesis brought about by growth hormone.

Apart from his personal research achievements Asher Korner was an able and inspiring teacher both of graduates and undergraduates. His style of research, knowledge and enthusiasm helped the many graduates, students and associates who worked with him. His leadership created an environment in which learning and research flourished. In 1967 he left Cambridge to become the first Professor of Biochemistry at Sussex University where he quickly established a flourishing group of young and able biochemists.

Above all Asher Korner was an unusually kind and generous person. His loss is a blow to science in general but these personal qualities make his death particularly tragic to those who knew him well.

Erratum

In the article "Larval Development and Metamorphosis of *Acanthaster planci* (Asteroidea)" by J. A. Henderson and J. S. Lucas (*Nature*, 232, 656; 1971), Fig. 2 should have been as follows:



Reports and Publications

not included in the Monthly Books Supplement

Great Britain

- Proceedings of the Royal Irish Academy. Vol. 71, Section B, No. 8: The Granite Dome of the Upper Liffey Valley District, Co. Wicklow—a Subsidiary Unit of the Leinster Batholith. By J. C. Brindley. Pp. 109–118+plate 4. (Dublin: Royal Irish Academy, 1971.) 18p. [267]
- The Leicester Polytechnic Students Oksfjord Expedition 1970. Loppa Peninsula, Finnmark, Arctic Norway. Official Report. Pp. 94. (Leicester: City of Leicester Polytechnic, 1971.) [267]
- Whatman Advanced Ion-Exchange Celluloses—Guide to Literature. Pp. ii+72. (Maidstone: W. and R. Balston (Modified Cellulose), Ltd., Springfield Mill, 1971.) [267]
- Overseas Development Institute. Annual Report 1970. Pp. 41. (London: Overseas Development Institute, Ltd., 1971.) [267]
- Medicines Commission. First Annual Report to end of 1970. Pp. iv+12. (London: HMSO, 1971.) 12p net. [277]
- Department of Education and Science. Education Survey No. 13: The Education of Immigrants. Pp. v+129+13 photographs. (London: HMSO, 1971.) 85p net. [287]
- Pulse Shape Discrimination with Organic Scintillators. By Dr. G. W. McBeth, R. A. Winyard and J. E. Lutkin. Pp. 27. (Colnbrook, Bucks: Koch-Light Laboratories, Ltd., 1971.) [287]
- Population of the United Kingdom—Report of the Select Committee on Science and Technology, Session 1970–71. Observations by the Government. (Cmnd. 4748.) Pp. 3. (London: HMSO, 1971.) 5p net. [297]

- Home-Grown Cereals Authority. Progress Reports on Research and Development, 1970/71. Pp. 43. (London: Home-Grown Cereals Authority, 1971.) [307]
- Potato Marketing Board. The Production of Potatoes for Canning. By D. Gray and J. K. A. Bleasdale. Edited by Miss V. E. Ellis. Pp. 26. (London: Potato Marketing Board, 1971.) [307]
- International Journal for Parasitology, Vol. 1, No. 1, May 1971. Edited by Professor J. D. Smyth. Pp. 1–108. Annual subscriptions (including postage): For libraries, research establishments and all other multiple-reader institutes £10; \$25. Private individuals, whose departmental libraries subscribe, may obtain this journal for their personal use at a reduced rate of £6; \$15. (Oxford and New York: Pergamon Press, 1971.) [307]
- EMI and International Defence. Pp. 20. (Hayes, Middx.: EMI Electronics, Ltd., 1971.) [307]
- Building Research Station Digest, No. 132: Wilful Damage on Housing Estates. Pp. 4. (London: HMSO, 1971.) 5p. [307]

Other Countries

- Transvaal Museum, Pretoria. Report for the year ending 31st March 1970. Pp. 32. (Pretoria: Transvaal Museum, 1971.) [217]
- Ontario Research Foundation. 1970 Annual Report. Pp. 44. (Sheridan Park, Ontario: Ontario Research Foundation, 1971.) [227]
- The Rockefeller Foundation. President's Review and Annual Report for 1970. Pp. xxviii+229. (New York: The Rockefeller Foundation, 1971.) [237]
- National Research Council of Canada. Report of the President 1970–71. Pp. 94. (Ottawa: National Research Council of Canada, 1971.) [237]
- Cornell International Agricultural Development Bulletin No. 21: Feasibility of Commercial Dairying with Cattle Indigenous to the Tropics. By R. E. McDowell. Pp. 22. (Ithaca, New York: New York State College of Agriculture, Cornell University, 1971.) 50.35. [237]
- BC Research. 27th Annual Report 1970. Pp. 20. (Vancouver: British Columbia Research Council, 1971.) [237]
- Board of Grain Commissioners for Canada, Winnipeg, Manitoba. Grain Research Laboratory—1970 Report. Pp. v+87. (Ottawa: Information Canada, 1971.) [267]
- World Health Organization. Technical Report Series, No. 465: Application and Dispersal of Pesticides—Eighteenth Report of the WHO Expert Committee on Insecticides. Pp. 66. (Geneva: WHO; London: HMSO, 1971.) 4 Sw. francs; 40p; \$1.25. [267]
- Government of India: Ministry of Health. Report of the Central Drugs Laboratory, Calcutta, 1st April 1962 to 31st March 1965. Pp. ii+60. (Delhi: Manager of Publications, 1970.) 73p. [267]
- Journal of Fluorine Chemistry, Vol. 1, No. 1, July 1971. Edited by H. J. Emeléus and J. C. Tatlow. Pp. 1–128. Published quarterly. Subscription rate: Sfr. 114.75; US\$ 28.70 per year, including postage. (Lausanne: Elsevier Sequoia, S.A., 1971.) [267]
- South African Journal of Antarctic Research, No. 1, 1971. Pp. 1–40. Published annually. Subscription rate: R2.00 per annum. (Pretoria: Publishing Division, South African Council for Scientific and Industrial Research, POB 395, 1971.) [267]
- Neurobiology, Vol. 1, No. 1, 1971. Pp. 1–67. Subscription price: D.kr. 148 plus postage D.kr. 12—(\$21.50) payable in advance. Price per issue D.kr. 40—(\$5.40). (Copenhagen: Munksgaard, 1971.) [287]
- Australian Journal of Botany: Supplementary Series. Supplement No. 1: Morphology and Taxonomy of the *Audouinella* Complex (Rhodophyta) in Southern Australia. By W. J. Woelkerling. Pp. 91. (East Melbourne: Editorial and Publications Section, CSIRO, 1971.) [287]

HOW TO BUY NATURE

Volumes start in January, March, May, July, September and November, but subscriptions may begin at any time.

The direct postal price per subscription is:

12 MONTHS* (52 issues per title)

	Surface Mail UK and worldwide	Airfreight U.S.A. & Canada
Nature (Friday)	£14	\$48
Nature + Nature Physical Science	£24	\$83
Nature + Nature New Biology	£24	\$83
All three editions	£29.50	\$108
Annual Index	£1	\$3

* Rates for shorter periods *pro rata* (minimum three months)
(Charge for delivery by air mail on application)

Editorial and Publishing Offices of NATURE

MACMILLAN JOURNALS LIMITED
4 LITTLE ESSEX STREET, LONDON WC2R 3LF
Telephone Number: 01-836 6633. Telegrams: Phusis London WC2R 3LF
Telex: 262024

711 NATIONAL PRESS BUILDING
WASHINGTON DC 20004
Telephone Number: 202-737 2355. Telex: 64280

Subscription Department

MACMILLAN JOURNALS LIMITED
BRUNEL ROAD, BASINGSTOKE, HANTS
Telephone Number: Basingstoke 29242

American display advertisements
NATURE SCIENTIFIC PUBLICATIONS INC.
711 NATIONAL PRESS BUILDING
WASHINGTON DC 20004

All other advertisements

T. G. SCOTT & SON, LIMITED
1 CLEMENT'S INN, LONDON WC2A 2ED
Telephone 01-242 6264/01-405 4743
Telegrams: Textualist London WC2A 2ED

Registered as a newspaper at the Post Office

Copyright © Macmillan Journals Limited, November 19 1971