

## Corrigendum

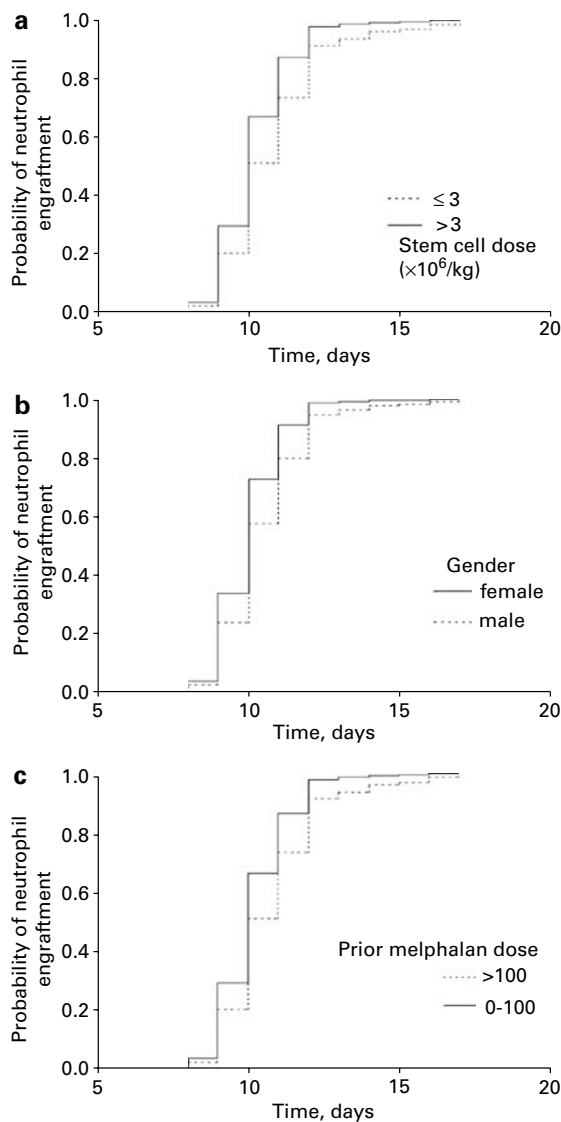
# Predictive factors for hematopoietic engraftment after autologous peripheral blood stem cell transplantation for AL amyloidosis

B Oran, K Malek, V Sanchorawala, DG Wright, K Quillen, KT Finn, M LaValley, M Skinner and DC Seldin

*Bone Marrow Transplantation* (2005) **35**, 635.  
doi:10.1038/sj.bmt.1704898

**Correction to:** *Bone Marrow Transplantation* (2005) **35**, 567–575. doi:10.1038/sj.bmt.1704826

Figure 2a has been published incorrectly, the correct version is shown below.



**Figure 2** Covariate-adjusted regression curves for neutrophil engraftment by a Cox proportional hazard regression model, examining the independent effect of stem cell dose (a), gender (b), and prior melphalan dose (c).