

Simultaneous Blockade of Adenosine A_{2A} and Metabotropic Glutamate mGlu₅ Receptors Increase Their Efficacy in Reversing Parkinsonian Deficits in Rats

Roberto Coccorello¹, Nathalie Breyse¹ and Marianne Amalric^{*1}

¹Laboratoire de Neurobiologie de la Cognition, CNRS and Université de Provence, Marseille cedex, France

Recent evidence suggest that antagonism of adenosine A_{2A} receptors represent an alternative therapeutic approach to Parkinson's disease (PD). Coactivation of A_{2A} and the glutamate subtype 5 metabotropic receptors (mGlu₅) synergistically stimulates DARPP-32 phosphorylation and c-fos expression in the striatum. This study therefore tested the effects of a joint blockade of these receptors to alleviate the motor dysfunction in a rat model of PD. 6-Hydroxydopamine infusions in the striatum produced akinetic deficits in rats trained to release a lever after a stimulus in a reaction time (RT) task. At 2 weeks after the lesion, A_{2A} and mGlu₅ receptors selective antagonists 8-(3-chlorostyryl)caffeine (CSC) and 2-methyl-6-(phenylethynyl)-pyridine (MPEP) were administered daily for 3 weeks either as a single or joint treatment. Injections of CSC (1.25 mg/kg) and MPEP (1.5 mg/kg) separately or in combination reduced the increase of delayed responses and RTs induced by 6-OHDA lesions, while the same treatment had no effect in controls. Furthermore, coadministration of lower doses of 0.625 mg/kg CSC and 0.375 mg/kg MPEP noneffective as a single treatment promoted a full and immediate recovery of akinesia, which was found to be more efficient than the separate blockade of these receptors. These results demonstrate that the combined inactivation of A_{2A} and mGlu₅ receptor potentiate their beneficial effects supporting this pharmacological strategy as a promising anti-Parkinsonian therapy.

Neuropsychopharmacology (2004) 29, 1451–1461, advance online publication 24 March 2004; doi:10.1038/sj.npp.1300444

Keywords: Parkinson's disease; adenosine A_{2A}; MPEP; reaction time task

INTRODUCTION

The dopamine (DA) precursor L-DOPA has been the most effective treatment for Parkinson's disease (PD). While improving the motor symptoms (akinesia, tremor, and rigidity) in the first years of treatment, in more than 50% of the patients the daily therapy produces severe invalidating side effects (on-off episodes, fluctuations, dyskinesia, cognitive dysfunction). Therefore, a treatment modulating the dopaminergic transmission yet targeting indirectly the dopaminergic receptors might represent a challenging therapeutic alternative. Adenosine A_{2A} receptor (A_{2A}) antagonists provide anti-Parkinsonian benefit in nonhuman primate model of PD (Kanda *et al*, 1998; Grondin *et al*, 1999; Morelli and Wardas, 2001) and have recently been evaluated in patients with L-DOPA-treated PD (Hauser *et al*, 2003; Baja-Jimenez *et al*, 2003). In contrast to the widespread

distribution of other adenosine receptor subtypes (A₁, A_{2B}, and A₃), the A_{2A} receptor subtypes shows a quite specific localization in the basal ganglia largely restricted to the striatum (Svenningsson *et al*, 1999; Fredholm *et al*, 2001). As shown by *in situ* hybridization and binding studies (Martinez-Mir *et al*, 1991; Schiffmann *et al*, 1991; Svenningsson *et al*, 1998), the A_{2A} receptor is coexpressed with DA D₂ receptors in the striatopallidal GABAergic neurons, which contain enkephalin and originate in the so-called striatal efferent indirect pathway (Fink *et al*, 1992). Behavioral data support the strong A_{2A}-D₂ receptor interactions to explain the enhancement of the anti-Parkinsonian effects of DA agonists in rodent models of PD (Pinna *et al*, 1996; Fenu *et al*, 1997; Koga *et al*, 2000; Hauber *et al*, 2001).

In addition to the A_{2A}-D₂ receptors interaction, altered balance between DA- and glutamate neuronal systems may also underlie the pathophysiology of PD (Albin *et al*, 1989; Wichmann and DeLong, 1997). A growing number of studies in animal models of PD suggest that counteracting glutamatergic hyperactivity by pharmacological blockade of glutamate transmission in the basal ganglia represents the most recent challenge in the treatment of Parkinsonian patients (Rouse *et al*, 2000). Owing to their high level of expression in the basal ganglia structures: striatum, the

*Correspondence: M Amalric, Laboratoire de Neurobiologie de la Cognition, CNRSUMR 615531, chemin Joseph Aiguier 13402, Marseille cedex 20, France, Tel.: +33 4 91 16 42 66; Fax +33 4 91 77 50 83, E-mail: amalric@lncf.cnrs-mrs.fr

Received 10 October 2003; revised 18 February 2004; accepted 19 February 2004

Online publication: 26 February 2004 at <http://www.acnp.org/citations/Npp02260403469/default.pdf>

internal pallidum and substantia nigra pars reticulata (Testa *et al*, 1994; Tallaksen-Greene *et al*, 1998), the group I metabotropic glutamate receptors play a major role in the regulation of these nuclei (Rouse *et al*, 2000). Indeed, recent studies in rats have emphasized the anti-Parkinsonian action of the selective mGluR antagonist of subtype 5 (mGlu₅ receptor) 2-methyl-6-(phenylethynyl)-pyridine (MPEP) in 6-OHDA-lesioned rats (Spooren *et al*, 2000; Breyse *et al*, 2002, 2003).

New findings provide evidence that coactivation of A_{2A} and mGlu₅ receptors produce synergistic effect on DARPP-32 phosphorylation, a signal transduction molecule that is selectively enriched in medium-spiny striatal neurons (Nishi *et al*, 2003) and potentiate *c-fos* striatal expression (Ferré *et al*, 2002). However, the functional evidence of these positive interactions on specific motor deficits such as akinesia occurring early in the course of PD remains unknown. Here we provide evidence that subthreshold doses of the highly selective A_{2A} receptor antagonist, 8-(3-chlorostyryl)caffeine (CSC), when administered in combination to the mGlu₅ receptor antagonist MPEP, alleviate motor executive deficits in an operant task in rats. Partial bilateral 6-OHDA lesions of the striatum, which have previously been found to produce long-lasting deficits in movement initiation in a reaction time (RT) task, were used as a model of the early stage of PD (Amalric *et al*, 1995a; Breyse *et al*, 2002, 2003).

MATERIALS AND METHODS

RT Task

Animals. Male Wistar rats ($n = 90$, Charles River, Lyon, France), weighing 110–120 g at their arrival in the laboratory, were housed two per cage in a temperature and light-controlled room (0700–1900). Animals were maintained in food-deprived conditions (15–20 g laboratory chow per rat), to keep them at about 85% of the free-feeding weight. Water was available *ad libitum*. All procedures were conducted in accordance with the requirements of the French 'Ministère de l'agriculture et de la pêche' Décret no. 87–848, October 19, 1987.

Behavioral procedure. Rats were conditioned in standard operant chambers (23 × 22 × 30 cm; Campden Instruments, Cambridge, UK). Each operant box was equipped with a retractable lever, a food magazine and, above the lever, a cue light (a 2.8 W bulb) corresponding to the trigger-conditioning stimulus (CS). The lever required a force of 0.8 N for switch closure. A ceiling-located red house-light was automatically switched on at the beginning of each session. Boxes were located in a wooden soundproof cabinet with a low-level noise fan. The operant chambers were controlled by a PC and data collected by an interface device (Paul Fray, Ltd). As previously detailed (Amalric *et al*, 1995a), rats were trained to press the lever down until the CS onset occurring randomly after four equally generated intervals (500, 750, 1000, or 1250 ms). Rats had to release the lever as fast as possible to be rewarded by a food pellet (45 mg; Phymep, Paris, France). RT, measured as the time elapsing from the CS onset to the lever release, averaged 300 ms by the end of the training phase. Daily sessions

ended after 100 trials, and the performance was evaluated by recording the number of correct (rewarded) and incorrect (nonrewarded) responses. Incorrect responses are classified into 'premature' (a lever release before the CS onset), or 'delayed' when the lever is released with RTs exceeding 600 ms. In order to achieve a level of 70% of rewarded trials, rats are required to be trained for approximately 3 months of daily sessions. At the end of the training phase, rats were tested for 6 consecutive days to collect the preoperative baseline values. After a 7-day postoperative recovery period, rats were tested again for 24 sessions until postoperative day 31.

Drugs. 6-OHDA (Sigma Aldrich, St Quentin Fallavier, France) was dissolved in ascorbic acid solution (0.1 mg/ml in 0.9% saline). 1,3,7-trimethyl-8-(3-chlorostyryl)caffeine (CSC), (Sigma-RBI, France) was suspended in a solution of methylcellulose (0.3%) and distilled water. MPEP hydrochloride (a generous gift of F Gasparini, Novartis, Basel, Switzerland) was dissolved in distilled water. Both compounds were injected intraperitoneally (i.p.) in a volume of 1 ml/kg.

Dopaminergic lesion. Rats were anesthetized with a solution (i.m. administered) of xylazine (15 mg/kg) and ketamine (100 mg/kg) and then positioned in a stereotaxic apparatus (David Kopf Instruments, Tujunga, CA, USA) with the incisor bar set at –3.0 mm below the interaural line. 6-OHDA (12 µg/3 µl; Sigma Aldrich, Lyon, France) or vehicle solution was bilaterally infused into the striatum (from bregma AP +0.2 mm, L ±3.5 mm, and DV –4.8 mm (Paxinos and Watson, 1986). Infusion rate of 0.3 µl/min was achieved via 30-gauge cannulae connected (by a Tygon tubing) to a 10 µl Hamilton syringe mounted on a microdrive pump (CMA/100; CMA, Stockholm, Sweden). To allow a better diffusion of the toxin from the injection site, injectors were left in place for a further 5 min.

Experimental Procedure

6-OHDA lesion. The effects of 6-OHDA lesions were evaluated on RT performance from postoperative days 8 to 13 in three groups of rats ($n = 16$, 19, and 24, respectively). 6-OHDA-lesioned rats were then subjected to different pharmacological treatment in a chronic fashion (eg daily injected for 3 weeks from postoperative days 14 to 31).

Chronic CSC treatment. Lesioned animals were CSC injected (CSC 0.625 mg/kg, $n = 8$ and CSC 1.25 mg/kg, $n = 8$) and tested 20 min later in the RT task. The effects of CSC chronic treatment were further tested in two sham-operated (CSC 0.625, $n = 7$; CSC 1.25, $n = 5$) control groups under the same experimental conditions. Doses were selected on the basis of previous studies, showing no effect on basic motor measurement (Jacobson *et al*, 1993).

Chronic MPEP treatment. MPEP was injected in two groups of 6-OHDA-lesioned animals (MPEP 0.375 mg/kg, $n = 10$ and MPEP 1.5 mg/kg, $n = 9$) and tested immediately afterwards. The effect of the highest dose of MPEP (1.5 mg/kg) was further tested in a sham-control group ($n = 6$), since no effects were found with the lowest dose (MPEP

0.375 mg/kg) in 6-OHDA rats. Doses of MPEP were selected on the basis of our own previous study (Breysse *et al*, 2002).

Chronic MPEP + CSC cotreatment. CSC and MPEP were coinjected (CSC and MPEP, respectively, 20 min later and immediately before the task) and tested in a chronic fashion as above (days 14–31 after surgery). Rats were divided into three subgroups depending on the dose of CSC and MPEP (CSC 0 + MPEP 0, $n = 7$; CSC 0.625 + MPEP 0.375, $n = 8$; CSC 1.25 + MPEP 1.5, $n = 9$). The effects of chronic CSC–MPEP coadministration were also tested in two sham-operated groups (CSC 0.625 + MPEP 0.375, $n = 7$; CSC 1.25 + MPEP 1.5, $n = 6$).

Statistical Analysis

Data were collected during pre- and postoperative period of six sessions each and during the 3 weeks chronic treatment (total of the 18 daily sessions) and analyzed on all the task-dependent variables (Statview 5.0, SAS Institute Inc., Cary, NC, USA). Number of correct, premature, and delayed responses were collapsed across days by block of 6 days each (eg weeks) and the effects of the treatment (lesion and pharmacological effects) were overall analyzed by a two-way repeated measure ANOVA, with one between-subject factor (subgroups) and two within-subject factors treatment (five blocks) and days (six sessions per block). Effects of single CSC or MPEP treatment and CSC + MPEP cotreatment were analyzed by separate repeated measures ANOVA, with one between-subject factor (6-OHDA and sham) and a two within-subject factors (blocks and days) for all the above dependent variables. One-way ANOVA followed by *post hoc* tests (Fisher's PLSD test) when appropriate were used for multiple pairwise comparisons within each group. Analysis on RTs were performed on selective sessions pre- (day 4) and postoperatively (on days 13, 16, 22, and 28 corresponding to periods entitled post, weeks I, II, and III). Responses with RTs shorter than 100 ms or concomitant to the cue onset were discarded since true detection of the cue was unlikely to have occurred. Furthermore, the RT limit of 600 ms taken as the criterion in control session (90% of the trials) was increased to 900 ms to take into account delayed RT occurring after 6-OHDA lesions. Furthermore, to analyze whether rats used the conditional probability of the stimulus occurrence and decreased their RTs as a function of the length of the foreperiod (delays preceding the stimulus onset), RTs were averaged by delay in all subjects and submitted to a one-way ANOVA with two within-subjects factor: the four various intervals and the pre- and postoperative sessions. To evaluate the effects of CSC (0.625 mg/kg) and MPEP (0.375 mg/kg) cotreatment on motor preparatory processes, the RTs distribution was plotted as a percentage of the total number by 50 ms bins ranging from 100 to 900 ms, in individual sessions on preoperative day 4 and postoperative days 13, 16, 22, and 28.

Histology

After completion of the behavioral testing, rats were killed by decapitation and brains were stored at -80°C until cryostat sectioning. Brains coronal 12 μm sections were

collected (-20°C) at the level of the striatum using a cryostat apparatus (Leica CM3050). The extent of 6-OHDA lesions was verified by autoradiographic labeling of DA uptake sites utilizing as ligand the [³H]mazindol procedure in randomly selected subjects of each group. Binding of [³H]mazindol was measured according to the procedure described elsewhere (Javitch *et al*, 1985). Briefly, sections were firstly air-dried and rinsed for 5 min at 4°C in 50 mM Tris buffer with 120 mM NaCl and 5 mM KCl. Then, the sections were incubated for 40 min with 15 nM [³H]mazindol (NEN DuPont; specific activity 17 Ci/mM) in 50 mM Tris buffer containing 300 mM NaCl and 5 mM KCl added with 0.3 mM desipramine to block the noradrenaline transporter. The possible unspecific binding was determined by incubating some sections in the same solution plus 30 mM benztropine. Sections were rinsed twice for 3 min in the incubation medium without mazindol and for 10 s in distilled water and were air-dried. Finally, the sections were left in contact for 21 days to a specific ³H-sensitive film screen (Raytest, Courbevoie, France) to generate autoradiographs that were further quantified with a β imager (Fuji-Bas 5000). The lack of mazindol labeling was first determined in the dorsolateral part of the striatum (between interaural coordinates AP, 10.7–8.2 mm according to the atlas of Paxinos and Watson, 1986) in lesioned rats and compared with control animals. An overall evaluation of the DA depletion was further assessed on the whole striatum as previously described (Breysse *et al*, 2003).

RESULTS

After completion of the training phase, all animals reached a preoperative level averaging 70, 25, and 5% of correct, premature, and delayed responses, respectively. The overall ANOVA showed that no significant differences were found among all groups before surgery (group effect on correct, premature, and delayed responses ($F_{11,74} = 0.53$, $F_{11,74} = 0.41$, and $F_{11,74} = 0.96$, respectively, all NS).

Chronic Pharmacological Treatment in Control Animals

The overall ANOVA performed on the number of correct, delayed, and premature responses during pre- and postoperative periods after MPEP or CSC treatment in the five sham-operated groups revealed no significant interaction group \times treatment \times days ($F_{80,520} = 0.9$, 1.04, and 0.8 ns for correct, delayed, and premature responses, respectively), no main group effect ($F_{4,26} = 1.04$, 2.51, and 0.71) nor main treatment effect ($F_{4,104} = 0.53$, 0.68, and 0.25). The performances of the sham-operated animals remain stable for the whole duration of testing up to 4 weeks after surgery (Figure 1). Subsequent analysis performed in the CSC–control group showed that the animals did not modify their correct or incorrect (delayed and premature) responses whatever the dose of CSC tested (treatment effect, $F_{4,40} = 0.22$, 0.30, and 0.11, respectively, all NS) (illustrated in Figure 1a for the highest dose of CSC). Moreover, correct and incorrect responses were not affected by 1.5 mg/kg MPEP chronic treatment in sham-operated animals (Figure 1b). No significant main treatment effects were found ($F_{4,20} = 0.20$, 0.21, and 0.13, all NS, respectively for

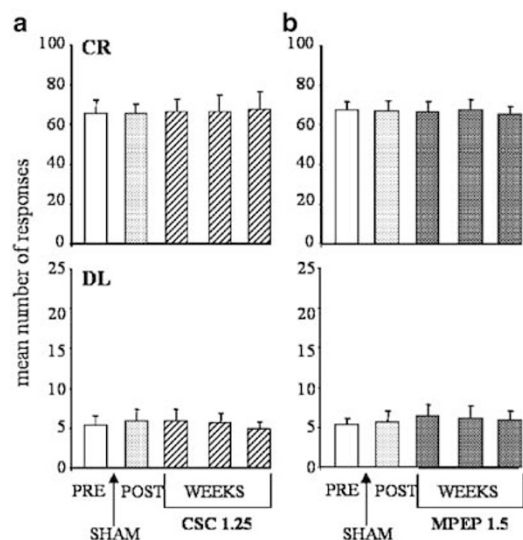


Figure 1 Effects of chronic blockade of A_{2A} receptors with CSC 1.25 mg/kg (a) or mGlu₅ receptors with MPEP 1.5 mg/kg (b) treatment on correct (CR) and delayed (DL) responses in sham-operated animals. The vertical axes represent the mean number of responses \pm SEM per block of six sessions for the two variables measured. The various blocks correspond to: pre (preoperative days 6–1), post (from days 8 to 13 after surgery) and three blocks (one per week) corresponding to postoperative days 14–19, 20–25, and 26–31, respectively.

correct, delayed, and premature). The lowest dose of 0.375 mg/kg was therefore not further tested in this group. In addition, when injected concomitantly (ie combination of lower or higher doses of CSC and MPEP), CSC and MPEP chronic treatment did not affect the performance of sham-operated animals (main treatment effect, $F_{4,44} = 0.81, 0.59$, and 0.36 , all NS, respectively correct, delayed, and premature responses).

Chronic Pharmacological Treatment in 6-OHDA Groups

Histological results. The extent of 6-OHDA-induced dopaminergic depletion is illustrated by the loss of the striatal [³H]mazindol binding in a representative subject (Figure 2a). DA denervation, measured by quantitative analysis of [³H]mazindol labeling in the depleted areas reached a level ranging from 57 to 77% (mean 66 ± 2) in the dorsal area of the striatum as compared to sham-operated animals ($p < 0.01$, nonpaired *t*-test). As previously shown (Amalric et al, 1995b; Breyse et al, 2003), the dopaminergic lesions were found to extend on the whole antero-posterior part of the striatum and were restricted to the dorsolateral area rostrally (Figure 2a). An average of 40–50% of DA denervation of the whole striata, which fits with the previously reported decrease in endogenous striatal DA contents assessed by HPLC, was found (Amalric et al, 1995b). Animals belonging to the 6-OHDA groups found to be inconsistently depleted (eg asymmetric lesion or DA depletion below 25%, $n = 4$) were excluded from the statistical analysis.

Behavioral results. While surgery did not affect the postoperative performance in the sham-operated groups, the striatal 6-OHDA injections significantly altered correct

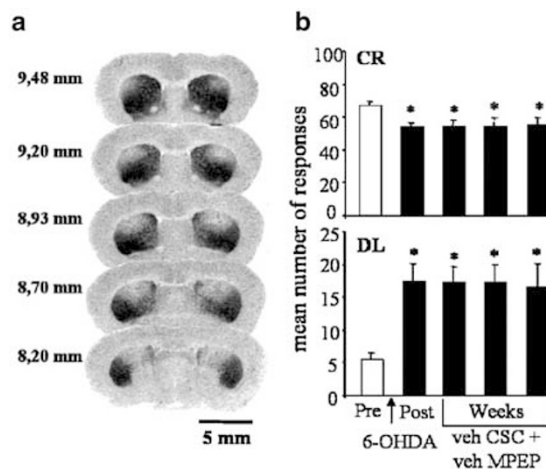


Figure 2 (a) Binding of [³H]mazindol to dopamine uptake sites at the striatal level. Film autoradiograms showed the antero-posterior extent of the DA denervation in a representative 6-OHDA-lesioned animal. The lack of DA uptake binding shows the extent of the DA lesion restricted to the dorsal striatum. Values give the distance in millimeters from the interaural zero according to the atlas of Paxinos and Watson (1986). (b) Effects of chronic vehicle coinjection on correct (CR) and delayed (DL) responses after 6-OHDA lesion. The vertical axes represent the mean number of responses \pm SEM per block of six sessions. Pre (days 6–1), post (day 8–13 after 6-OHDA lesions) and 3 weeks of daily treatment corresponding to postoperative days 14–19, 20–25, and 26–31, respectively. *Significant difference from preoperative performance ($p < 0.05$, PLSD Fisher's test after significant ANOVA).

responding in all lesioned groups over time (overall group \times treatment \times days interaction $F_{120,960} = 1.24$, $p < 0.05$). A significant group \times treatment \times days interaction was also found on the number of delayed responses ($F_{120,960} = 1.33$, $p < 0.05$) with no change in premature responding ($F_{120,960} = 0.9$, NS). As illustrated in Figure 2b, 6-OHDA lesions decreased the number of correct responses by significantly enhancing delayed responses (lesion effect, $F_{1,48} = 78.52$ and $F_{1,48} = 123.46$, respectively, $p < 0.01$). The effects of the lesion were long lasting since no recovery was observed for up to 31 days postlesion in the vehicle-injected group (presurgery vs third week, all $p < 0.01$ and post-surgery vs third week, all NS, for correct and delayed responses; Fisher's PLSD test). 6-OHDA lesions also produced a lengthening of RTs (main lesion effect $F_{1,48} = 226.13$, $p < 0.01$) with no differences among lesioned groups as seen on postlesion period in Figure 6a, b (no group effect $F_{6,48} = 0.26$, NS). Correct RTs ranging from 308 ± 11.43 to 328 ± 8.8 ms in the various groups preoperatively were increased in a range of 403 ± 15.9 to 427 ± 11.10 ms 14 days after 6-OHDA lesions (all pre- vs postlesion RTs were significantly different, $p < 0.001$, Fisher's PLSD test). Indeed, the typical RTs distribution (illustrated in the group cotreated with subthreshold doses of CSC and MPEP in Figure 7a) revealed that the lesions induced an important rightward shifting of the distribution curve towards higher values of RTs.

A_{2A} receptor blockade in 6-OHDA-lesioned rats. CSC treatment induced a significant main effect on correct responses ($F_{4,72} = 12.59$, $p < 0.01$; Figure 3), delayed

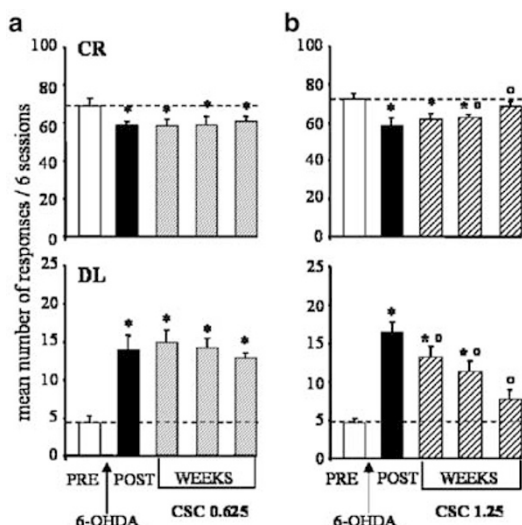


Figure 3 Effects of chronic A_{2A} receptors with CSC 0.625 mg/kg (a) or 1.25 mg/kg (b) treatment on correct (CR) and delayed (DL) responses after 6-OHDA lesion. Vertical axes represent the mean number of responses ± SEM per block of six sessions. Pre (days 6–1), post (day 8–13) and 3 weeks of daily treatment with CSC corresponding to postoperative days 14–19, 20–25, and 26–31, respectively. *°Significant difference from preoperative and the first block of postoperative performance, respectively ($p < 0.05$, PLSD Fisher's test after significant ANOVA).

responses ($F_{4,72} = 22.34$, $p < 0.01$), whereas no effect on premature responses was found (main treatment effect, $F_{4,72} = 0.16$, NS). *Post hoc* analysis further revealed that while the lowest dose of CSC (0.625 mg/kg) did not modify the 6-OHDA-induced alterations of correct (decreased) and delayed (increased) responses (Figure 3a), CSC 1.25 mg/kg significantly enhanced the number of correct responses by the second week of treatment (postsurgery vs second and third week, $p < 0.05$, Fisher's PLSD test, Figure 3b). The mean correct score measured at the last week of treatment was not significantly different from prelesion scores (significant difference between presurgery and first and second weeks only, $p < 0.01$, Fisher's PLSD test). A progressive decrease of delayed responses allowed a full recovery of the preoperative performances after 3 weeks of CSC 1.25 mg/kg treatment (postsurgery vs first, second, and third week, $p < 0.05$, preoperative vs first and second week, $p < 0.05$, but not third week, Fisher's PLSD test). Furthermore, while CSC 0.625 mg/kg did not reduce the increased RTs following 6-OHDA lesions at any time postlesion, a progressive reduction of RTs was observed after CSC 1.25 mg/kg (postsurgery vs first, second, and third week, $p < 0.05$, Fisher's PLSD test; Figure 6a).

mGlu₅ receptor blockade in 6-OHDA-lesioned rats. MPEP-injected animals (0.375 and 1.5 mg/kg) showed a significant effect on correct (main treatment effect, $F_{4,84} = 9.25$, $p < 0.01$) and delayed (main treatment, $F_{4,84} = 23.01$, $p < 0.01$) but not premature responses ($F_{4,84} = 0.56$, NS, as illustrated in Figure 4a, b). *Post hoc* analysis further revealed that the lowest dose of MPEP did not affect the number of correct and delayed responses (presurgery vs first, second, and third week, all $p < 0.01$, Fisher's PLSD test; Figure 4a), while MPEP 1.5 mg/kg progressively counteracted the effect of the lesion (Figure 4b). A full recovery of preoperative

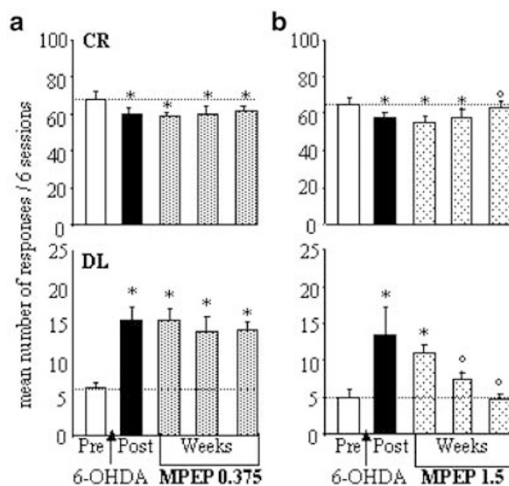


Figure 4 Effects of chronic mGlu₅ receptors blockade with MPEP 0.375 mg/kg (a) or 1.5 mg/kg (b) on correct (CR) and delayed (DL) responses after 6-OHDA lesion. Vertical axes represent the mean number of responses ± SEM per block of six sessions. Pre (days 6–1), post (day 8–13) and 3 weeks of daily treatment with MPEP corresponding to postoperative days 14–19, 20–25, and 26–31, respectively. *°Significant difference from preoperative and the first block of postoperative performance, respectively ($p < 0.05$, PLSD Fisher's test after significant ANOVA).

performances was found on correct performance at the last week of testing (post vs third week, $p < 0.01$, Fisher's PLSD test). The mean correct score measured at the last week of treatment was not significantly different from prelesion scores (significant difference between presurgery and first and second weeks only, $p < 0.01$, Fisher's PLSD test). MPEP 1.5 mg/kg treatment rapidly decreased delayed responses over time to reach preoperative level of performance by the second week of treatment (postsurgery vs second and third week, $p < 0.05$, preoperative vs first week only, $p < 0.01$, Fisher's PLSD test). In addition, as illustrated in Figure 6a, MPEP 1.5 mg/kg but not 0.375 mg/kg significantly decreased mean RTs during the 3-week treatment (postsurgery vs first, second, and third week, $p < 0.05$, Fisher's PLSD test).

Combined A_{2A} and mGlu₅ receptors blockade in 6-OHDA-lesioned rats. The coadministration of CSC and MPEP, whatever the combination of doses used (ie low vs high doses) significantly affected correct and delayed responses (significant main treatment effect $F_{4,84} = 16.11$ and $F_{4,84} = 31.32$, respectively, all $p < 0.01$). *Post hoc* analysis on CSC and MPEP coinjected groups further revealed that the treatment had effectively, but differentially, increased the number of correct responses (Figure 5a, b). The highest doses combination (CSC 1.25 mg/kg + MPEP 1.5 mg/kg) only partially restored the level of prelesion performance (postsurgery vs third week, $p < 0.05$, but presurgery vs third week, $p < 0.01$, Fisher's PLSD test, Figure 5b). The cotreatment also rapidly diminished the number of delayed responses (postsurgery vs first, second, and third week, all $p < 0.01$, Fisher's PLSD test) however without reaching the level of preoperative performances (presurgery vs first, second, and third week, $p < 0.05$, Fisher's PLSD test). Conversely, the lowest doses combination of CSC (0.625 mg/kg) and MPEP (0.375 mg/kg), which were

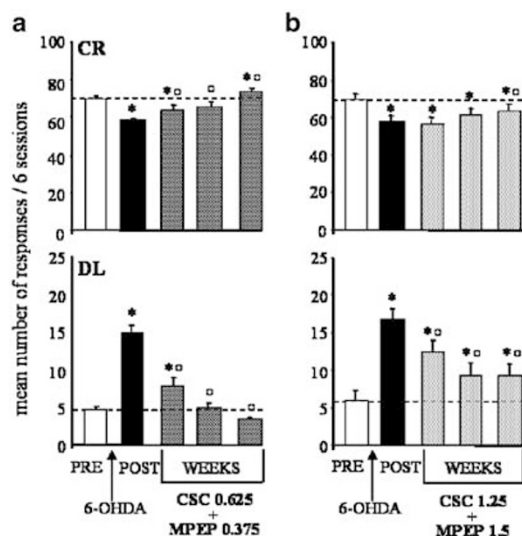


Figure 5 Effects of combined administration of the A_{2A} receptor antagonist CSC and the mGlu₅ receptors antagonist MPEP at different doses ((a) CSC 0.625 mg/kg + MPEP 0.375 mg/kg and (b) CSC 1.25 mg/kg + MPEP 1.5 mg/kg) on correct (CR) and delayed (DL) responses after 6-OHDA lesion. Vertical axes represent the mean number of responses \pm SEM per block of six sessions. Pre (days 6–1), post (day 8–13) and 3 weeks of daily treatment with CSC and MPEP corresponding to postoperative days 14–19, 20–25, and 26–31, respectively. *^oSignificant difference from preoperative and the first block of postoperative performance, respectively ($p < 0.05$, PLSD Fisher's test after significant ANOVA).

ineffective in a single administration, significantly abolished the deficits produced by 6-OHDA lesions by gradually increasing the number of correct responses inducing a complete recovery of the preoperative performances by the end of the second week of treatment (postsurgery vs first, second, and third week, all $p < 0.01$, Fisher's PLSD test). Furthermore, the mean preoperative correct responses of 69 ± 2.9 were significantly increased to 73 ± 2.5 at the last week of treatment (presurgery vs third week, $p < 0.05$, Fisher's PLSD test; Figure 5a). The number of delayed responses after low doses CSC–MPEP cotreatment was found to be significantly different from postoperative sessions (postsurgery vs first, second, and third week, all $p < 0.01$; Fisher's PLSD test). In particular, a full recovery of preoperative level of delayed responses was observed as early as the second week of treatment (no significant difference presurgery vs second and third week, NS, Fisher's PLSD test). *Post hoc* analysis further confirmed that CSC–MPEP coadministration significantly counteracted the lengthening of RTs induced by the lesion (postsurgery vs first, second, and third week, all $p < 0.01$ for both treatments; Fisher's PLSD test, see Figure 6b). Furthermore, as illustrated in Figure 7a, the initial rightward shifting towards longer values of RTs after 6-OHDA lesions was completely reversed by low doses of CSC–MPEP treatment and the RTs distributions at the pre- and postoperative third week of treatment were found to overlap each other. As predicted by the assumption that rats would use the conditional probability of the stimulus occurrence, RTs were found to be faster as the delays increased thus revealing appropriate preparatory levels (Figure 7b). The overall ANOVA with repeated measures on time

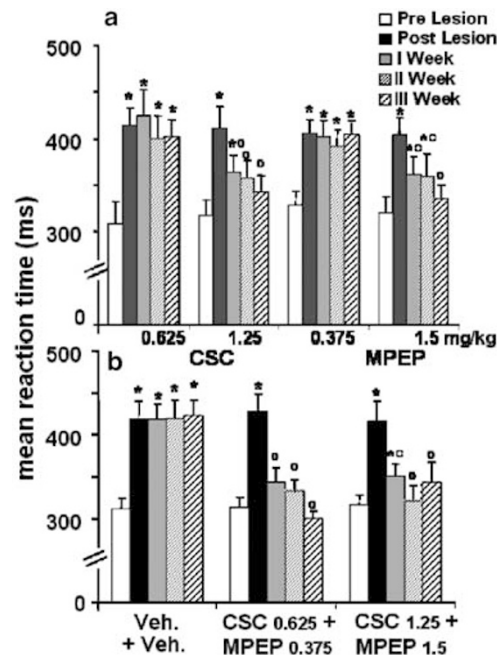


Figure 6 (a) Mean RT (ms) \pm SEM for one preoperative session (day 4; prelesion) and four postoperative sessions corresponding to the lesion effect without treatment (day 13; postlesion) and at different timing after daily treatment with CSC 0.625, 1.25 mg/kg or MPEP 0.375, 1.5 mg/kg (days 16, 22, and 28 corresponding, respectively, to first, second, and third weeks of treatment). (b) Mean RT (ms) \pm SEM for one preoperative session (day 4; prelesion) and four postoperative sessions corresponding to the lesion effect without treatment (day 13; postlesion) and at different timing after combined administration of CSC and MPEP at different doses (CSC 0 mg/kg + MPEP 0 mg/kg; CSC 0.625 mg/kg + MPEP 0.375 mg/kg and CSC 1.25 mg/kg + MPEP 1.5 mg/kg) as shown in (a). *^oSignificant difference from preoperative and the first block of postoperative performance, respectively ($p < 0.05$, PLSD Fisher's test after significant ANOVA).

and delays indicated a significant interaction between blocks \times foreperiods ($F_{12,84} = 2.03$, $p < 0.05$), a significant main effect of foreperiods ($F_{3,21} = 74.27$, $p < 0.01$) and a significant main effect of time ($F_{4,28} = 17.85$, $p < 0.01$). In the preoperative session, a delay-dependent decrease of RTs was observed ($F_{3,21} = 24.59$, $p < 0.01$), which was not modified after 6-OHDA lesions ($F_{3,21} = 43.83$, $p < 0.01$) showing that the motor preparatory processes were not altered by the lesion. CSC–MPEP cotreatment at low doses reduced the enhanced RTs at each foreperiod without altering the delay-dependent speeding of RTs (Figure 7b).

DISCUSSION

In the present study, we show that subthreshold doses of the adenosine A_{2A} receptor selective antagonist CSC administered concomitantly with the selective mGlu₅ antagonist MPEP have a potent beneficial effect on the motor deficits produced by striatal bilateral 6-OHDA injections. In the present model of PD, the partial striatal dopaminergic denervation increased delayed responses and RTs, suggesting a deficit in movement initiation (eg akinesia) similar to that observed in the early stage of Parkinsonism (Gauntlett-Gilbert and Brown, 1998; Breyse et al., 2002). These akinetic

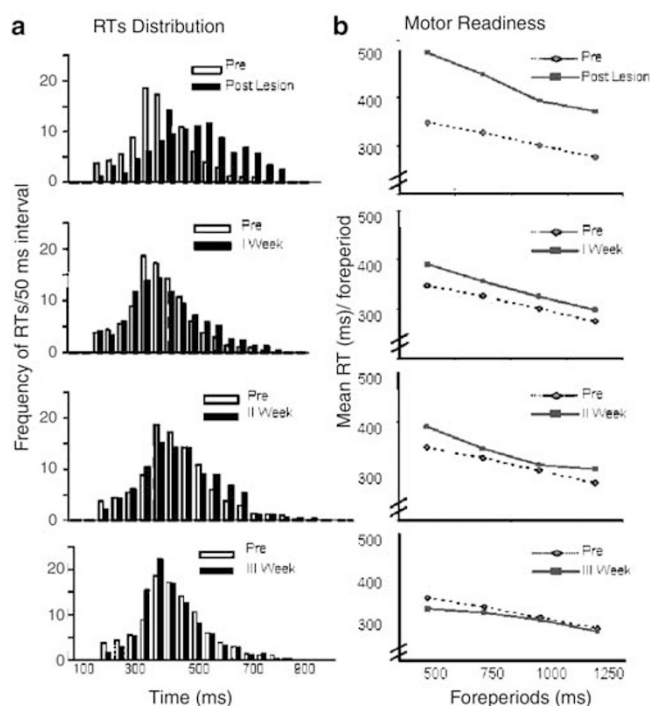


Figure 7 (a) Distributions of RTs before (open bars) and after striatal 6-OHDA lesions (solid bars). RTs distribution are illustrated before treatment (upper graph) and after 1, 2, or 3 weeks of chronic daily treatment with MPEP 0.375 mg/kg and CSC 0.625 mg/kg (lower graphs). Each bar represents the RT frequency (percentage) by 50 ms bins from 100 to 900 ms. (b) RTs (ms) are averaged at each foreperiod preceding the visual cue onset before (diamond, dashed line) and after 6-OHDA lesions (upper graph) and following chronic daily treatment with MPEP 0.375 mg/kg and CSC 0.625 mg/kg (lower graphs, square, and solid lines).

deficits were fully reversed by either a single treatment of CSC or MPEP at the higher doses tested or by a combined treatment with ineffective doses of each compound.

Adenosine A_{2A} Receptors Antagonism as Anti-Parkinsonian Strategy

Selective A_{2A} antagonists were previously found to be active in different models of PD. In rats with unilateral 6-OHDA lesions of the dopaminergic nigrostriatal pathway, the contralateral turning behavior induced by DA agonists is potentiated by antagonists of A_{2A} receptors (Jiang *et al*, 1993; Pinna *et al*, 1996; Fenu *et al*, 1997; Stromberg *et al*, 2000; Koga *et al*, 2000). Conversely, A_{2A} receptor agonists prevented the rotational behavior produced by apomorphine (Morelli *et al*, 1994). Recent evidence suggest that the antagonism of striatal A_{2A} receptors may represent an alternative therapeutic approach to PD and systemic or intrastriatal infusions of selective A_{2A} receptor antagonists, CSC or MSX-3, respectively, were found to reverse the cataleptic response induced by DA receptors blockade (Hauber *et al*, 1998, 2001). When tested in monkeys treated with 1-methyl-4-phenyl-1,2,5,6,-tetrahydropyridin (MPTP), the A_{2A} antagonist KW-6002 produced a significant improvement in motor disability (Kanda *et al*, 1998) and potentiated L-DOPA-mediated effects (Grondin *et al*, 1999).

The present results further demonstrate that the selective A_{2A} receptor antagonists CSC also potently reverse the akinetic deficits produced in partially DA denervated rats. The possibility that CSC may produce its effect by blockade of A₁ receptors may not be ruled out because it is selective but not specific to A_{2A} receptors. However, CSC was found to be 520-fold selective in binding assays at rat brain A_{2A} vs A₁ receptors (Zocchi *et al*, 1996; Jacobson *et al*, 1993) and very efficient in displacing in nanomolar concentration the selective A_{2A} agonist [³H]CGS21680 from rat striatal membranes (K_i 54 nM). Interestingly, preliminary studies show that the selective A_{2A} antagonist KW-6002 is able to improve the akinetic deficits produced by 6-OHDA lesions in the same RT task (R Coccarello and M Amalric, unpublished observations). Consequently, it is very likely that CSC exerts its effect via the blockade of A_{2A} receptors.

One potential drawback of the clinical use of the DA-mimicking properties of adenosine antagonists is related to the possible development of tolerance (Fredholm *et al*, 1999). Development of tolerance, as well as the potential occurrence of the so-called 'inversion effect' (eg the repeated administration of an antagonist can induce agonist-like effects), which might follow a long-lasting treatment, has severely limited the clinical usefulness of adenosine antagonists. The reversal of the akinetic deficits showed in the present study by a 3-week treatment with CSC constitute the first demonstration that the chronic A_{2A} receptors blockade is able to improve motor control without eliciting any side effects nor tolerance. This result is consistent with the idea that tolerance following repeated caffeine or theophylline treatment (Fredholm *et al*, 1999) mostly involves adenosine A₁ receptors and indirectly the D₁ DA receptors (Fredholm *et al*, 1999; Halldner *et al*, 2000).

Metabotropic Glutamate 5 Receptors Antagonism as Anti-Parkinsonian Strategy

We confirm here that blocking mGlu5 receptors by chronic MPEP treatment is also able to reverse akinesia. Systemic or intrastriatal administration of group I mGluR (subtypes 1 and 5) antagonists reversed catalepsy induced by a DA receptor blockade or DA depletion (Konieczny *et al*, 1998; Dawson *et al*, 2000; Ossowska *et al*, 2001). In unilateral and bilateral 6-OHDA models of PD, a chronic but not acute treatment with MPEP induced ipsilateral circling behavior and produced a full recovery of akinesia in the RT task (Spooren *et al*, 2000; Breyse *et al*, 2002). The selectivity of MPEP action on mGlu5 has recently been questioned since it could act as an allosteric potentiator of mGluR4 (Mathiesen *et al*, 2003) and exert its effects through this group III mGluRs subtype. Although this nonselective action cannot be ruled out the range of doses of MPEP below 10 μM used in the present study possess a better affinity for mGlu5 than for mGluR4 (Anderson *et al*, 2002). Nevertheless, as previously shown (Breyse *et al*, 2002) the range of doses alleviating 6-OHDA-induced deficits without inducing side effects is relatively narrow. To circumvent this problem we have therefore investigated the possible advantages of a coadministration of selective adenosine A_{2A} and mGlu₅ receptor antagonists.

Functional Interaction between A_{2A} and mGlu₅ Receptors

Our results show that CSC and MPEP coadministration is able to rapidly reduce the proportion of delayed responses and shorten RTs in comparison to a single treatment and that such improvement is not accompanied by any manifestations of abnormal movements. This finding indicates that the combined blockade of A_{2A} and mGlu₅ receptors is even more effective in reversing akinesia than each treatment administered separately. The animals treated with subthreshold doses of A_{2A} and mGlu₅ receptors antagonists exhibit the most efficient (eg faster) and complete reinstatement of the preoperative level of performance by the end of the second week of chronic treatment. The pronounced reduction of the number of delayed responses is also mirrored by the significant increase of correct responses as compared to the preoperative performances. In contrast, when CSC and MPEP were combined at doses effective in a single treatment, the progressive amelioration of the akinetic deficits observed during the first 2 weeks of cotreatment did not show any further improvement during the last week of treatment.

Adenosine A_{2A} receptor mRNA is highly expressed in the striatum, nucleus accumbens, olfactory tubercle, and the globus pallidus (Jarvis *et al.*, 1989) where group I mGlu receptors (including subtypes 1 and 5) are also strongly expressed (Testa *et al.*, 1994). In addition, group I mGlu receptors are present in the subthalamic nucleus (STN) and the substantia nigra pars reticulata (SNr) (Tallaksen-Greene *et al.*, 1998; Testa *et al.*, 1994). In the striatum, adenosine A_{2A} receptors are predominantly expressed by γ -amino butyric acid (GABA)-enkephalin striatopallidal neurons, where they colocalize with DA D₂ receptors (Fink *et al.*, 1992; Martinez-Mir *et al.*, 1991) and are also present in 25% of cholinergic interneurons (Schiffmann *et al.*, 1991; Fredholm *et al.*, 2001). Interestingly, mGlu₅ receptors show a striking similar localization in the striatopallidal GABAergic projection neurons and interneurons in primates (Smith *et al.*, 2000), so providing a morphological basis for the possible existence of functional interactions between striatal A_{2A} and mGlu₅ receptors. The simultaneous chronic blockade of A_{2A} and mGlu₅ receptors with doses that were fully effective in separate administration might have induced a competing action at the level of a common signal transduction pathway. After 2 weeks of chronic coincident blockade, the effect achieved by each antagonist on its own appears to be saturated and neither a further improvement nor a successive deterioration could be observed. Alternatively, the concurrent blockade of each receptor may have produced a competing action on a final common output pathway of the basal ganglia.

According to the current model of the basal ganglia functional organization (Albin *et al.*, 1989), the degeneration of nigrostriatal DA neurons produces an upregulation of the striatopallidal GABA pathway (indirect pathway). The increased pallidal GABAergic activity induce the disinhibition of the STN and the SNr, which are overactive in Parkinsonian conditions (Awad *et al.*, 2000) and thought to be responsible of the reduced thalamocortical activity (DeLong, 1990). Therefore, it is rational to hypothesize that both A_{2A} and mGlu₅ receptors antagonist may alleviate the

increased activity of the striatal neurons projection to the GP which, in turn, would result in the stimulation of thalamic glutamatergic projections to the cortex and then to the striatum. Electrophysiological studies have reported that adenosine A_{2A} receptors may control the GABA-evoked overflow in striatum and globus pallidus (Corsi *et al.*, 1999; Kirk and Richardson, 1994; Mayfield *et al.*, 1993), and synergistically increase the pallidal GABA levels when agonists acting at both A_{2A}/mGlu₅ receptors are coinjected (Diaz-Cabiale *et al.*, 2002). The systemic injection of CSC is known to reverse the catalepsy produced by the bilateral blockade of D₂ DA receptors in the striatum with sulpiride (Hauber *et al.*, 2001) and to decrease contralateral rotation induced by intrastriatal and intrasubthalamic nucleus administration of a nonselective groups I and II mGlu receptors agonist, 1S,3R-ACPD (Feeley-Kearney and Albin, 1995). Furthermore, intrastriatal administration of selective antagonists of group I mGlu receptors (AIDA) inhibited the haloperidol-induced muscle rigidity (Wolfarth *et al.*, 2000). Recent evidence have shown that agonists acting at A_{2A} and group I mGlu receptors were able to reduce either separately or in costimulation the high-affinity state of the DA D₂ receptor binding sites (Ferré *et al.*, 1999). A functional antagonistic relationship of D₂ with A_{2A} and mGlu₅ receptors is further supported by a recent study showing that the mGlu₅ receptor agonist, CHPG, inhibit the D₂-induced turning behavior in unilateral 6-OHDA-lesioned animals, an effect greatly potentiated by a joint administration with the A_{2A} receptor agonist CGS 21680 (Popoli *et al.*, 2001). It might then be suggested that the complete recovery of DA-induced deficits observed in the present study after a concomitant blockade of mGlu₅ and A_{2A} receptors result from a normalization of the overactive striatopallidal GABA pathway.

An influence of MPEP on extrastriatal mGlu₅ receptors is, however, possible since this compound was found to inhibit the neuronal activity of the STN, increased after stimulation of group I mGluRs (Awad *et al.*, 2000; Rouse *et al.*, 2000). Interestingly, with the same model of partial DA denervation as used in the present study, we have recently shown that MPEP chronic treatment alleviate the akinesia via a normalization of the neuronal metabolic activity in the STN and the SNr, which was profoundly increased by the lesion (Breyse *et al.*, 2003). Therefore, we hypothesized that a simultaneous blockade of A_{2A} receptors in the striatum and pallidum and mGlu₅ receptors in the STN and SNr may potentiate their action in reducing the overactive outflow of the basal ganglia output structures and contribute to the regulation of the motor disability related to the Parkinsonian conditions. However, a subtle equilibrium in the degree of the blockade of these two receptors appears to be crucial since the combination of each compound at doses that were effective alone is showed to less efficiently counteract the akinetic deficits. This is in line with the fact that an altered balance between the direct and indirect output pathways of the basal ganglia may produce competing effects on motor output (DeLong, 1990).

Interestingly, only a chronic treatment either with CSC or MPEP was found to greatly ameliorate the Parkinsonian deficits. The acute injection of each compound administered separately or in combination was without effect. The present findings consistently confirm the beneficial effects

of a chronic MPEP treatment on the Parkinsonian deficits (Breysse *et al*, 2002). These results also demonstrate for the first time that a chronic A_{2A} blockade, via the administration of its selective antagonist CSC, is effective against the 6-OHDA-induced akinesic deficits. In view of the recent demonstration that A_{2A} and mGlu₅ receptors can form heteromeric complexes (Ferré *et al*, 2002) as well as coaggregate and cointernalize with the DA D₂ receptors after their prolonged stimulation (Hillion *et al*, 2002), the idea of a reciprocal adaptation of these receptors subtypes appear to be further corroborated. It seems therefore conceivable that intramembrane interactions implying common final pathways between striatal A_{2A} and mGlu₅ receptors could have been involved in the functional synergism underlying the efficient recovery of the akinesia observed in the present study. A specific mechanism by which this functional relationship may occur at the molecular level would be to activate the signal transduction molecule DARPP-32 (DA- and cyclic AMP-regulated phosphoprotein of mol. wt of 32 kDa), which has been shown to be abundantly expressed in all striatal medium spiny neurons (Walaas and Greengard, 1984; Ouimet *et al*, 1998) and to play an essential modulatory role in DA transmission (Fienberg *et al*, 1998). A coactivation of adenosine A_{2A} and mGlu₅ receptors has been recently revealed to be responsible of the synergistic potentiation of the state of phosphorylation of DARPP-32 (Nishi *et al*, 2003) and *c-fos* expression (Ferré *et al*, 2002) in striatal neurons. The functional cross talk that links mGlu₅ and A_{2A} receptors may therefore underlie the behavioral recovery observed in the present study.

The described synergic effects produced by each drug, ineffective on its own, raises therefore the opportunity to promote selectively, yet indirectly, the dopaminergic transmission and to control over time the hyperactivity of the output structures of the striatopallidal pathway, in lack of specific side effects. The present study demonstrates that a balanced combination between single, ineffective doses of highly selective mGlu₅ and A_{2A} antagonists might really represent a novel nondopaminergic therapeutic approach for the treatment of the PD invalidating motor deficits.

ACKNOWLEDGEMENTS

This research was supported by the Centre National de la Recherche Scientifique, the Fondation de France (MA) and a franco-italian Galilée program by the Ministère des Affaires Etrangères and the CRUI. RC was supported by the CNR (Italy) and NB by the Fondation pour la Recherche Medicale and Institut Lilly. The authors are grateful to Dr Fabrizio Gasparini (Novartis Pharma AG, Basel, Switzerland) for the generous gift of MPEP.

REFERENCES

- Albin RL, Young AB, Penney JB (1989). The functional anatomy of basal ganglia disorders. *Trends Neurosci* 12: 366–375.
- Amalric M, Baunez C, Nieoullon A (1995a). Does the blockade of excitatory amino acid transmission in the basal ganglia simply reverse reaction time deficits induced by dopamine inactivation? *Behav Pharmacol* 6: 508–519.
- Amalric M, Moukles H, Nieoullon A, Daszuta A (1995b). Complex deficits on reaction time performance following bilateral intrastriatal 6-OHDA infusion in the rat. *Eur J Neurosci* 7: 972–980.
- Anderson JJ, Rao SP, Rowe B, Giracello DR, Holtz G, Chapman DF *et al* (2002). [³H]Methoxymethyl-3-[(2-methyl-1,3-thiazol-4-yl) ethynyl]pyridine binding to metabotropic glutamate receptor subtype 5 in rodent brain: *in vitro* and *in vivo* characterization. *J Pharmacol Exp Ther* 303: 1044–1051.
- Awad H, Hubert GW, Smith Y, Levey AI, Conn PJ (2000). Activation of metabotropic glutamate receptor 5 has direct excitatory effects and potentiates NMDA receptor currents in neurons of the subthalamic nucleus. *J Neurosci* 20: 7871–7879.
- Baja-Jimenez W, Sherzai A, Dimitrova T, Favit A, Bibbiani F, Gillespie M *et al* (2003). Adenosine A_{2A} receptor antagonist treatment of Parkinson's disease. *Neurology* 61: 293–296.
- Breysse N, Amalric M, Salin P (2003). Metabotropic glutamate 5 receptor blockade alleviates akinesia by normalizing activity of selective basal-ganglia structures in Parkinsonian rats. *J Neurosci* 23: 8302–8309.
- Breysse N, Baunez C, Spooen W, Gasparini F, Amalric M (2002). Chronic but not acute treatment with a metabotropic glutamate 5 receptor antagonist reverses the akinesic deficits in a rat model of parkinsonism. *J Neurosci* 22: 5669–5678.
- Corsi C, Melani A, Bianchi L, Pepeu G, Pedata F (1999). Effect of adenosine A_{2A} receptor stimulation on GABA release from the striatum of young and aged rats *in vivo*. *Neuroreport* 16: 3933–3937.
- Dawson L, Chadha A, Megalou M, Duty S (2000). The group II metabotropic glutamate receptor agonist, DCG-IV, alleviates akinesia following intranigral or intraventricular administration in the reserpine-treated rat. *Br J Pharmacol* 129: 541–546.
- DeLong MR (1990). Primate models of movement disorders of basal ganglia origin. *Trends Neurosci* 13: 281–285.
- Diaz-Cabiale Z, Meritxell V, Del Arco A, O'Connor W, Harte MK, Müller CE *et al* (2002). Metabotropic glutamate mGlu₅ receptor-mediated modulation of the ventro-pallidal GABA pathway in rats. Interactions with adenosine A_{2A} and dopamine D₂ receptors. *Neurosci Lett* 324: 154–158.
- Feeley-Kearney JA, Albin RL (1995). Adenosine A₂ receptor-mediated modulation of contralateral rotation induced by metabotropic glutamate receptor activation. *Eur J Pharmacol* 287: 115–120.
- Fenu S, Pinna A, Ongini E, Morelli M (1997). Adenosine A_{2A} receptor antagonism potentiates L-DOPA-induced turning and *c-Fos* expression in 6-hydroxydopamine-lesioned rats. *Eur J Pharmacol* 321: 143–147.
- Ferré S, Karcz-Kubicha M, Hope BT, Popoli P, Burguen J, Gutierrez MA *et al* (2002). Synergistic interaction between adenosine A_{2A} and glutamate mGlu₅ receptors: Implications for striatal neuronal function. *Proc Natl Acad Sci USA* 99: 11940–11945.
- Ferré S, Popoli P, Rimondini R, Reggio R, Kehr J, Fuxe K (1999). Adenosine A_{2A} and group I metabotropic glutamate receptors synergistically modulate the binding characteristics of dopamine D₂ receptors in the rat striatum. *Neuropharmacology* 38: 129–140.
- Fienberg AA, Hiroi N, Mermelstein PG, Song W, Snyder GL, Nishi A *et al* (1998). DARPP-32: regulator of the efficacy of dopaminergic neurotransmission. *Science* 281: 838–842.
- Fink JS, Weaver DR, Rivkees SA, Peterfreund RA, Pollack A, Adler EM *et al* (1992). Molecular cloning of the rat A₂ adenosine receptor: selective co-expression with D₂ dopamine receptors in rat striatum. *Molec Brain Res* 14: 186–195.
- Fredholm BB, Battig K, Holmen J, Nehlig A, Zvartau EE (1999). Actions of caffeine in the brain with special reference to factors that contribute to its widespread use. *Pharmacol Rev* 51: 83–133.

- Fredholm BB, Ijzerman AP, Jacobson KA, Klotz KN, Linden J (2001). Nomenclature and classification of adenosine receptors. *Pharmacol Rev* 53: 527–552.
- Gauntlett-Gilbert J, Brown VJ (1998). Reaction time deficits and Parkinson's disease. *Neurosci and Biobehav Rev* 22: 865–881.
- Grondin R, Bedard PJ, Hadj Tahar A, Gregoire L, Mori A, Kase H (1999). Antiparkinsonian effect of a new selective adenosine A_{2A} receptor antagonist in MPTP-treated monkeys. *Neurology* 52: 1673–1677.
- Halldner L, Lozza G, Lindstrom K, Fredholm BB (2000). Lack of tolerance to motor stimulant effects of a selective adenosine A_{2A} receptor antagonist. *Eur J Pharmacol* 406: 345–354.
- Hauber W, Nagel J, Sauer R, Muller CE (1998). Motor effects induced by a blockade of adenosine A_{2A} receptors in the caudate-putamen. *Neuroreport* 9: 1803–1806.
- Hauber W, Neuscheler P, Nagel J, Muller CE (2001). Catalepsy induced by a blockade of dopamine D₁ or D₂ receptors was reversed by a concomitant blockade of adenosine A_{2A} receptors in the caudate-putamen of rats. *Eur J Neurosci* 14: 1287–1293.
- Hauser RA, Hubble JP, Truong DD (2003). Randomized trial of the adenosine A_{2A} receptor antagonist istradefylline in advanced Parkinson's disease. *Neurology* 61: 297–303.
- Hillion J, Canals M, Torvinen M, Casado V, Scott R, Terasmaa A et al (2002). Coaggregation, cointernalization and codesensitization of adenosine A_{2A} receptors and dopamine D₂ receptors. *J Biol Chem* 277: 18091–18097.
- Jacobson KA, Nikodijevic O, Padgett WL, Gallo-Rodriguez C, Maillard M, Daly JW (1993). 8-(3-Chlorostyryl)caffeine (CSC) is a selective A₂-adenosine antagonist *in vitro* and *in vivo*. *FEBS Lett* 323: 141–144.
- Jarvis MF, Schulz R, Hutchison AJ, Do UH, Sills MA, Williams M (1989). [³H]CGS 21680, a selective A₂ adenosine receptor agonist directly labels A₂ receptors in rat brain. *J Pharmacol Exp Ther* 251: 888–893.
- Javitch JA, Strittmatter SM, Snyder SH (1985). Differential visualization of dopamine and norepinephrine uptake sites in rat brain using 3Hmazindol autoradiography. *J Neurosci* 5: 1513–1521.
- Jiang H, Jackson-Lewis V, Muthane U, Dollison A, Ferreira M, Espinosa A et al (1993). Adenosine receptor antagonists potentiate dopamine receptor agonist-induced rotational behavior in 6-hydroxydopamine-lesioned rats. *Brain Res* 613: 347–351.
- Kanda T, Jackson MJ, Smith LA, Pearce RK, Nakamura J, Kase H et al (1998). Adenosine A_{2A} antagonist: a novel antiparkinsonian agent that does not provoke dyskinesia in parkinsonian monkeys. *Ann Neurol* 43: 507–513.
- Kirk IP, Richardson PJ (1994). Adenosine A_{2A} receptor-mediated modulation of striatal [³H]GABA and [³H]acetylcholine release. *J Neurochem* 62: 960–966.
- Koga K, Kurokawa M, Ochi M, Nakamura J, Kuwana Y (2000). Adenosine A_{2A} receptor antagonists KF17837 and KW-6002 potentiate rotation induced by dopaminergic drugs in hemiparkinsonian rats. *Eur J Neurosci* 408: 249–255.
- Konieczny J, Ossowska K, Wolfarth S, Pilc A (1998). LY354740, a group II metabotropic glutamate receptor agonist with potential antiparkinsonian properties in rats. *Naunyn Schmiedebergs Arch Pharmacol* 358: 500–502.
- Martinez-Mir MI, Probst A, Palacios JM (1991). Adenosine A₂ receptors: selective localization in the human basal ganglia and alterations with disease. *Neuroscience* 42: 697–703.
- Mathiesen JM, Svendsen N, Brauner-Osborne H, Thomsen C, Ramirez MT (2003). Positive allosteric modulation of the human metabotropic glutamate receptor 4 (hmGluR4) by SIB-1893 and MPEP. *Br J Pharmacol* 138: 1026–1030.
- Mayfield RD, Suzuki F, Zahniser NR (1993). Adenosine A_{2A} receptor modulation of electrically evoked endogenous GABA release from slices of globus pallidus. *J of Neurochem* 60: 2334–2337.
- Morelli M, Fenu S, Pinna A, Di Chiara G (1994). Adenosine A₂ receptors interact negatively with dopamine D₁ and D₂ receptors in unilaterally 6-hydroxydopamine-lesioned rats. *Eur J Pharmacol* 251: 21–25.
- Morelli M, Wardas J (2001). Adenosine A_{2A} receptor antagonists: potential therapeutic and neuroprotective effects in Parkinson's disease. *Neurotoxicity Res* 3: 545–556.
- Nishi A, Liu F, Matsuyama S, Hamada M, Higashi H, Nairn AC et al (2003). Metabotropic mGlu₅ receptors regulate adenosine A_{2A} receptor signaling. *Proc Natl Acad Sci USA* 100: 1322–1327.
- Ossowska K, Konieczny J, Wolfarth S, Wieronska J, Pilc A (2001). Blockade of the metabotropic glutamate receptor subtype 5 (mGluR₅) produces antiparkinsonian-like effects in rats. *Neuropharmacology* 41: 413–420.
- Ouimet CC, Langley-Gullion KC, Greengard P (1998). Quantitative immunocytochemistry of DARPP-32-expressing neurons in the rat caudate-putamen. *Brain Res* 808: 8–12.
- Paxinos G, Watson C (1986). *The Rat Brain in Stereotaxic Coordinates*, (Edition 2) Academic Press: Sydney.
- Pinna A, Di Chiara G, Wadas J, Morelli M (1996). Blockade of A_{2A} adenosine receptors positively modulates turning behaviour and c-fos expression induced by D₁ agonists in dopamine-denervated rats. *Eur J Neurosci* 8: 1176–1181.
- Popoli P, Pezzola A, Torvinen M, Reggio R, Pintor A, Scarchilli L et al (2001). The selective mGlu₅ receptor agonist CHPG inhibits quinpirole-induced turning in 6-hydroxydopamine-lesioned rats and modulates the binding characteristics of dopamine D₂ receptors in the rat striatum. *Neuropsychopharmacology* 25: 505–513.
- Rouse ST, Marino MJ, Bradley SR, Awad H, Wittmann M, Conn PJ (2000). Distribution and roles of metabotropic glutamate receptors in the basal ganglia motor circuit: implications for treatment of Parkinson's disease and related disorders. *Pharmacol Ther* 88: 427–435.
- Schiffmann SN, Jacobs O, Vaderhaeghen JJ (1991). Striatal restricted adenosine A₂ receptor (RDC8) is expressed by enkephalin but not by substance P neurons: an *in situ* hybridization histochemistry study. *J Neurochem* 57: 1062–1067.
- Smith Y, Charara A, Hanson JE, Paquet M, Levey AI (2000). GABA(B) and group I metabotropic glutamate receptors in the striatopallidal complex in primates. *J Anat* 196: 555–576.
- Spooren WP, Gasparini F, Bergmann R, Kuhn R (2000). Effects of the prototypical mGlu(5) receptor antagonist 2-methyl-6-(phenylethynyl)-pyridine on rotarod, locomotor activity and rotational responses in unilateral 6-OHDA-lesioned rats. *Eur J Pharmacol* 406: 403–410.
- Stromberg I, Popoli P, Muller CE, Ferre S, Fuxe K (2000). Electrophysiological and behavioural evidence for an antagonistic modulatory role of adenosine A_{2A} receptors in dopamine D₂ receptor regulation in the rat dopamine-denervated striatum. *Eur J Neurosci* 12: 4033–4037.
- Svenningsson P, Le Moine C, Fisone G, Fredholm BB (1999). Distribution, biochemistry and function of striatal adenosine A_{2A} receptors. *Prog Neurobiol* 59: 355–396.
- Svenningsson P, Lindskog M, Rognoni F, Fredholm BB, Greengard P, Fisone G (1998). Activation of adenosine A_{2A} receptor and dopamine D₁ receptors stimulates cyclic AMP-dependent phosphorylation of DARPP-32 in distinct population of striatal projection neurons. *Neuroscience* 84: 223–228.
- Tallaksen-Greene SJ, Kaatz KW, Romano C, Albin RL (1998). Localization of mGluR1-like immunoreactivity and mGluR5-like immunoreactivity in identified populations of striatal neurons. *Brain Res* 780: 210–217.
- Testa CM, Standaert DG, Young AB, Penney JB (1994). Metabotropic glutamate receptor mRNA expression in the basal ganglia of the rat. *J Neurosci* 14: 3005–3018.

- Walaas SI, Greengard P (1984). DARPP-32, a dopamine- and adenosine 3':5'-monophosphate-regulated phosphoprotein enriched in dopamine-innervated brain regions. I. Regional and cellular distribution in the rat brain. *J Neurosci* **4**: 84–98.
- Wichmann T, DeLong MR (1997). Physiology of the basal ganglia and pathophysiology of movement disorders of basal ganglia origin. In: Watts RL (eds). *Movement Disorders: Neurological Principles and Practice*. McGraw-Hill: New York. pp 87–97.
- Wolfarth S, Konieczny J, Lorenc-Koci E, Ossowska K, Pilc A (2000). The role of metabotropic glutamate receptor (mGluR) ligands in parkinsonian muscle rigidity. *Amino Acids* **19**: 95–101.
- Zocchi C, Ongini E, Conti A, Monopoli A, Negretti A, Baraldi PG et al (1996). The non-xanthine heterocyclic compound SCH 58261 is a new potent and selective A_{2A} adenosine receptor antagonist. *J Pharmacol Exp Ther* **276**: 398–404.