

Role of *Ureaplasma* Species in Neonatal Chronic Lung Disease: Epidemiologic and Experimental Evidence

ROSE MARIE VISCARDI AND JEFFREY D. HASDAY

Department of Pediatrics [R.M.V.], Department of Medicine [J.D.H.], University of Maryland School of Medicine, Baltimore, Maryland 21201

ABSTRACT: The contribution of *Ureaplasma* respiratory tract colonization to the pathogenesis of bronchopulmonary dysplasia in preterm infants has been debated for over 20 y. We review the current understanding of the role of inflammation in altered developmental signaling in the preterm lung and the evidence from human studies and experimental models that *Ureaplasma*-mediated inflammation produces the BPD phenotype. We propose that *Ureaplasma* infection initiated *in utero* and augmented postnatally by exposure to volutrauma and oxygen elicits a sustained, dysregulated inflammatory response in the immature lung that impairs alveolarization, and stimulates myofibroblast proliferation and excessive collagen and elastin deposition. Potential strategies to prevent or ameliorate the effects of *Ureaplasma* infection *in utero* and in the preterm lung are discussed. (*Pediatr Res* 65: 84R–90R, 2009)

With recent improvements in perinatal care, bronchopulmonary dysplasia (BPD) has become a disease limited to the most immature infants (1), occurring in 30% of infants ≤ 28 wks gestation (2). Compared with the lung histology observed in the ventilated preterm lung during the preexogenous surfactant era, the ‘new’ BPD is characterized by more uniform inflation, fewer but larger alveoli, and less fulminant, but persistent inflammation (3). Studies of human infants and experimental animal models indicate that the central event in BPD pathogenesis is the interruption of normal developmental signaling during early stages of lung development by lung injury that is often initiated *in utero* by intrauterine infection and a subsequent dysregulated inflammatory response (1).

In 1988, three independent groups published single center cohort studies linking respiratory tract colonization with the *Mycoplasma* species *Ureaplasma urealyticum* with the development of BPD in preterm infants (4–6). The studies differed in eligibility criteria, culture sites (eye, throat, vagina, rectum (4), stomach (5), nasopharynx (5,6), trachea (5,6), and blood (6)), and sampling frequency, but each study contributed important observations concerning *Ureaplasma* colonization in the preterm population. They observed that colonization 1) was inversely related to gestational age (4–6), 2) occurred in some infants delivered with intact membranes, suggesting *in utero* acquisition (6), and persisted in some infants until discharge (4). Twenty years later, more than 30 additional studies with inconsistent results, 2 meta-analyses (7,8), and 3

comprehensive reviews (9–11) have been published without resolving the controversy of the importance of *Ureaplasma* respiratory tract colonization to the development of BPD, and no effective prevention or treatment strategies have been developed. This review will summarize the epidemiologic and experimental evidence that support a causative role of *Ureaplasma* spp. in BPD and explore potential therapeutic options.

Ureaplasma Species

A member of the *Mollicutes* class, *Ureaplasma*, is comprised of two species and 14 serovars. *U. parvum* contains serovars 1, 3, 6, and 14, and *U. urealyticum* contains the remaining serovars (10). All serovars lack cell walls, exhibit limited biosynthetic abilities, hydrolyze urea to generate ATP, and adhere to human mucosal surfaces (10). The sequenced *U. parvum* serovar 3 genome is the second smallest known genome with 751, 717 base pairs (12). Genes comprise 93% of the genome with 613 predicted protein-coding genes and 39 RNA-coding genes. About half of the protein-coding genes have been assigned biologic functions, 19% of the genes are similar to hypothetical genes of unknown function in other species, and 28% of the genes are unique hypothetical genes with no significant similarities to putative or known genes in other organisms.

Ureaplasma spp. Virulence Factors

Some serovars have greater association with adverse pregnancy outcomes than others (13–15). Although *U. parvum* is more commonly isolated from clinical adult vaginal and infant respiratory specimens (13,15), and is the predominant species in newborn serum and/or cerebrospinal fluid (CSF) samples detected by PCR (16), Abele-Horn *et al.* (13) reported a higher rate of BPD in *U. urealyticum* respiratory tract colonized infants. In contrast, Katz *et al.* (17) observed no difference in prevalence of either species detected by PCR between infants with and without BPD. To date, there has been no study that has determined the relationship of specific serovars and the development of BPD.

Previously proposed ureaplasma virulence factors include IgA protease, urease, phospholipases A and C, and production

Received November 3, 2008; accepted January 12, 2009.

Corresponding Author: Rose Marie Viscardi, M.D., 29, S Greene Street, Rm GS 110, Baltimore, M.D. 21201, Phone: 410-716-1913, Fax: 410-716-0404; e-mail: rviscardi@umaryland.edu

Financial support: Supported by HL71113, HL087166, and HD056424

Abbreviations: AF, Amniotic fluid; BPD, bronchopulmonary dysplasia; CSF, cerebrospinal fluid; IAI, intraamniotic infection; LPS, lipopolysaccharide; NF- κ B, nuclear factor-kappa B; PMA, post-menstrual age; TLR, Toll-like receptor

of hydrogen peroxide (12). These factors may allow the organism to evade mucosal immune defenses by degrading IgA, and injuring mucosal cells through the local generation of ammonia, membrane phospholipid degradation and prostaglandin synthesis, and membrane peroxidation, respectively. The ureaplasma MB antigen that contains both serovar-specific and cross-reactive epitopes, is the predominant antigen recognized during ureaplasma infections in humans. It exhibits highly variable size *in vitro* and in clinical isolates *in vivo*, suggesting that antigen size variation may be another mechanism through which the organism evades host defenses (10). Although functionally active IgA protease and phospholipase A and C were found in *Ureaplasma* spp., the genes that code for these proteins have not been identified in the *U. parvum* serovar 3 genome (12). The ureaplasma enzymes may have unique sequences compared with analogous genes in other species.

Association of *Ureaplasma* Respiratory Tract Colonization with Chronic Lung Disease in Preterm Infants

Because *Ureaplasma* is a commensal in the adult female genital tract, it has been considered of low virulence. However, its presence has been consistently associated with multiple obstetrical complications including infertility, histologic chorioamnionitis, stillbirth, preterm delivery, neonatal morbidity, and perinatal death (10,11,18). *Ureaplasma* spp. are the most common organisms isolated from amniotic fluid (AF) and infected placentas (18,19). The vertical transmission rate is inversely related to gestational age (20,21) and increases with duration of rupture of membranes (14). Detection of respiratory tract colonization with *Ureaplasma* by PCR suggests that colonization in very low birth weight infants (VLBW <1500g) is higher (25–48%) (10,22) than previously reported for culture-based studies (20%) (7).

The contribution of *Ureaplasma* respiratory tract colonization to the development of BPD has been debated. A meta-analysis of 17 clinical studies published before 1995 supported a significant association between *Ureaplasma* respiratory tract colonization and development of BPD defined as oxygen dependence at 28 to 30 d postnatal age (7), but there were insufficient data concerning the relationship of *Ureaplasma* colonization and BPD at 36 wk postmenstrual age (PMA). Most individual studies published since 1995 have supported the association of *Ureaplasma* and BPD (23–28), but other studies failed to show a significant association (29–32). Differences in population characteristics, clinical practices such as antenatal and postnatal steroid use, and culture methodology may account for differences in study conclusions.

Since interpretation of many of the studies published to date has been hampered by inclusion of small numbers of subjects resulting in inadequate power and possible sampling bias, Schelonka *et al.* (8) conducted a meta-analysis of 36 studies published between 1988 and 2004 involving ~3000 preterm infants. Studies were excluded if the proportion of eligible subjects was not described. Included studies were grouped by

definition of BPD as oxygen requirement at 28 postnatal days (BPD28; *n* = 23 studies, 2216 subjects) or 36 wk PMA (BPD36; *n* = 8 studies, 751 subjects). There was a 1.6 (BPD36) to 2.8 (BPD28) -fold increased risk for BPD in *Ureaplasma* colonized infants in the pooled studies. However, substantial heterogeneity was detected, decreasing the precision of the risk estimates. Factors that were related to higher reported odds of an *Ureaplasma*-BPD association included earlier year of publication, small sample size, surfactant use >90%, and endotracheal culture as the only method of diagnosis. Studies published since the last meta-analysis support the *Ureaplasma* respiratory colonization-BPD association (22,33), particularly for the subset of *Ureaplasma*-colonized infants exposed to chorioamnionitis and leukocytosis at birth (33).

The timing and duration of exposure of the developing lung to *Ureaplasma* may be variable and the relationship to pulmonary outcomes is not fully understood. The rate of vertical transmission increases with an increase in duration of rupture of membranes (14), suggesting that for many infants, neonatal infections are the result of ascending infection that occurs at or near parturition. However, *Ureaplasma* species have been detected in AF as early as the time of genetic amniocentesis (16–20 wk) in 0.36–2.8% (culture-based methods) (34–36) to 12.8% (PCR-based methods) (37) asymptomatic women. While the majority of women in whom early amniotic cavity infection is detected deliver at term (37), those with elevated AF IL-6 levels and midtrimester subclinical *Ureaplasma* intrauterine infection have increased risk for adverse pregnancy outcome including fetal loss and preterm delivery (38). Duration of exposure of the preterm lung postnatally may also be important. Although most epidemiologic studies focused on identifying colonization within the first few days of life, Castro-Alcaraz *et al.* (39) observed that persistent, but not transient, *Ureaplasma* respiratory tract colonization is a risk factor for BPD. Mortality due to respiratory complications is significantly higher in colonized infants (6,21). The risk of a combined outcome measure of BPD or death due to lung disease was 4.2-fold higher in *Ureaplasma* colonized than in noncolonized VLBW infants (22).

Systemic *Ureaplasma* Infections in Preterm Infants

Although the relationship of *Ureaplasma* respiratory tract colonization with BPD has been extensively studied, less is known about the incidence of invasive disease defined as detection in blood and/or CSF, and its relationship with neonatal outcomes. In 2 large prospective cohorts, *Ureaplasma* was detected in 17% of cord blood cultures (40) and 23.6% serum and/or CSF PCR samples (16), but invasive disease was not associated with BPD at 36 wk PMA in either cohort. Overall, almost half of subjects were *Ureaplasma* positive in one or more compartments (respiratory, blood, CSF), confirming that this organism is the most common pathogen affecting this population (16).

Experimental Evidence for Causative Role of *Ureaplasma* spp. in BPD

Elucidating the mechanisms by which *Ureaplasma* may contribute to BPD pathogenesis will not only provide evidence for a causal relationship, but also identify potential targets for interventions to prevent or ameliorate BPD in colonized infants. In this section, we will review our current understanding of the role of inflammation in altered developmental signaling in the preterm lung and the evidence from human studies, and *in vitro* and *in vivo* models that *Ureaplasma*-mediated inflammation produces the BPD phenotype. As shown in Fig. 1, we propose that *Ureaplasma* infection initiated *in utero* and augmented postnatally by exposure to volutrauma and oxygen elicits a sustained, dysregulated inflammatory response in the immature lung that impairs alveolarization, and stimulates myofibroblast proliferation, and excessive collagen and elastin deposition.

Chronic Inflammation in the Immature Lung Alters Developmental Signaling and Fibrosis

Infection-induced stimulation of inflammatory cytokines may be the causative link between intrauterine infection and neonatal lung injury. AF concentrations of IL-1 β , IL-6, TNF- α , and IL-8 were higher in pregnancies producing infants who developed BPD than in pregnancies producing infants without BPD (41). In a series of longitudinal studies comparing temporal changes in inflammatory mediators and their inhibitors in tracheal aspirates from preterm infants, with and without lung disease, we and others have shown an imbalance of pro- and anti-inflammatory cytokines in infants who develop BPD (42–46). The increase in expression of pulmonary pro-inflammatory cytokines, in concert with a decreased capacity to down-regulate this response in infants who develop BPD, suggest that persistent endogenous generation of these cytokines might contribute to chronic lung injury and inflammation.

In transgenic mice, overexpression of TNF- α , IL-6, or IL-11 inhibited alveolarization, indicating that prolonged exposure of the preterm lung to a pro-inflammatory environment contributes to abnormal alveolar septation (1). This contention is further supported by Bry and coworkers (47) who developed a bitransgenic CCSP-rtTA-(tetO)-CMV-IL-1 β mouse in which IL-1 β was expressed under conditional control in airway epithelial cells in the fetal and neonatal lung. IL-1 β expression increased from E14.5 until late gestation and decreased postnatally. Postnatal growth was impaired and mortality was higher in the IL-1 β expressing newborn mice. The newborn lungs demonstrated many features of the BPD phenotype, including disrupted alveolar septation and capillary development, and disordered α -smooth muscle actin (myofibroblast marker) and elastin deposition in alveolar septa of distal airspaces (47). These abnormalities were attributed to expression of CXC and CC chemokines resulting in recruitment of neutrophils and macrophages to the developing lung. This model demonstrates that inflammation initiated *in utero* early in lung development is sufficient to produce the BPD phenotype.

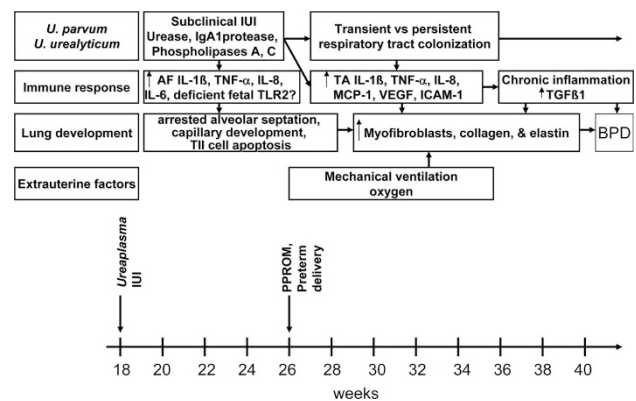


Figure 1. Proposed model for role of *Ureaplasma* infection in BPD pathogenesis. In this schematic, prolonged intraamniotic exposure of the fetal lung to *Ureaplasma* infection and maternal and fetal derived cytokines, recruits inflammatory cells, and alters TGF β 1 developmental signaling in the lung. Postnatal exposure to ventilation and oxygen augments this pro-inflammatory response leading to arrested alveolarization, disordered myofibroblast proliferation, and excessive collagen and elastin deposition.

The effects of prolonged exposure to pro-inflammatory cytokines on alveolarization may be mediated by up-regulation of TGF β 1. TGF β 1 plays a role in lung morphogenesis, repair of lung injury, airway remodeling, lung fibrosis, and BPD (48). TGF β was detected at sites of lung injury in association with myofibroblast proliferation in lungs of infants dying with RDS, implicating TGF β in the preterm lung response to injury (49). TGF β 1 overexpression in the lungs of newborn transgenic mice (50) or inoculation with TGF β 1-expressing adenoviral vectors in the newborn rat lung (51) produces a phenotype similar to human BPD with arrested lung saccular and vascular development. TNF- α (52) or IL-1 β (53) overexpression in rat lung produces lung fibrosis due to TGF β 1 stimulation, and induction of myofibroblasts. TNF- α , IL-1 β , and TGF β 1 are each elevated in tracheal aspirates of infants who progress to BPD (42,43,54). Taken collectively, these data suggest that prolonged exposure of the developing lung to inflammation contributes to BPD by disrupting normal TGF β developmental signaling.

Ureaplasma spp. Modulate the Inflammatory Response

Recent human and experimental studies confirm that exposure of the fetal and/or newborn lung to *Ureaplasma* contributes to altered lung development, sustained inflammation, and fibrosis. In a review of lung pathology of archived autopsy specimens from *Ureaplasma*-infected preterm infants, we observed moderate to severe fibrosis and increased elastic fiber accumulation (55,56). In addition, we observed increased numbers of myofibroblasts (Fig. 2) and TNF- α and TGF β 1-immunoreactive cells (Fig. 3) in all *Ureaplasma*-infected infants compared with noninfected gestational controls and infants who died with pneumonia from other causes (55,56). The increase in fibrosis and elastic fiber accumulation in the distal lung correlated spatially and temporally with the presence of TGF β 1-positive macrophages, suggesting that these are closely linked.

Animal *Ureaplasma* pneumonia models developed in non-human primates and mice demonstrate that an infection estab-

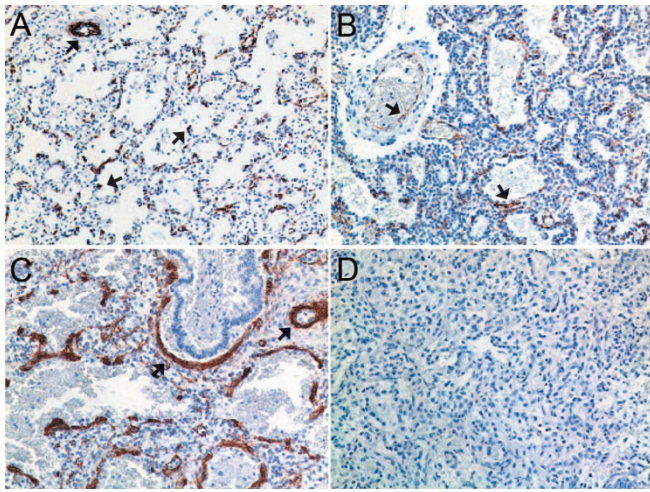


Figure 2. Comparison of α -smooth muscle actin (α -SMA) immunostaining in human preterm lung specimens. (A) Control nonventilated infant at 23 wk GA; (B) Other pneumonia case at 24 wk GA ventilated for 2 d; and (C) *Ureaplasma*-infected infant at 26 wk GA ventilated for 20 d. Lung sections were incubated with anti- α -SMA antibody and counterstained with hematoxylin. Negative controls were processed in the absence of primary antibody (D) (Magnification 200 \times). α -SMA immunoreactive cells were noted surrounding vessel walls (arrows) in (A) and distributed in a pattern of thickened clusters of cells often surrounding terminal airways in other pneumonia and *Ureaplasma* cases (B and C). The extent of myofibroblast accumulation and percent of lung involvement was greater in *Ureaplasma* cases than in other pneumonia cases. Reprinted from Viscardi *et al.* *Pediatr Dev Pathol* 9:143–151, Copyright © 2006 Society for Pediatric Pathology and the Pediatric Pathology Society, with permission.

lished in the pulmonary compartment leads to inflammation and lung injury. Intratracheal *Ureaplasma* inoculation caused an acute bronchiolitis in 140 d preterm baboons (57), and an acute interstitial pneumonia in newborn, but not 14d old mice (58). Hyperoxia exposure increased mortality, lung inflammation, and delayed pathogen clearance in *Ureaplasma*-inoculated newborn mice (59), consistent with the hypothesis that *Ureaplasma* augments the inflammatory response to secondary stimuli. In mice, *Ureaplasma* intratracheal inoculation caused an acute pneumonitis, sustained inflammation up to 28 d postinoculation despite apparent clearance of the organism (60). Although these models demonstrate the direct effect of *Ureaplasma* in the lung, they lack the early developmental component.

Intrauterine *Ureaplasma* infection models have been developed in nonhuman primates (61–64) and in fetal sheep (65,66) that more closely mimic the human condition. In Rhesus monkeys, intraamniotic inoculation of *U. parvum* serovar 1 at 130 d gestation (term, 167 d) increased uterine contractility, preceded by elevations in TNF- α , IL-1 β , IL-6, and IL-8 in AF and histologic evidence of chorioamnionitis (61,62). Similar findings were observed in the 125 d immature baboon model infected with *Ureaplasma in utero* (63). Intra-amniotic *Ureaplasma* (serovar 1) inoculation 2 d before delivery at 125 d (67% of term gestation) in the baboon caused an inflammatory response in the amniotic and fetal lung compartments and vertical transmission to the fetal lung that persisted up to 2 wk postnatally in half of the antenatal-exposed animals. Compared with lungs from noninfected animals and gestational

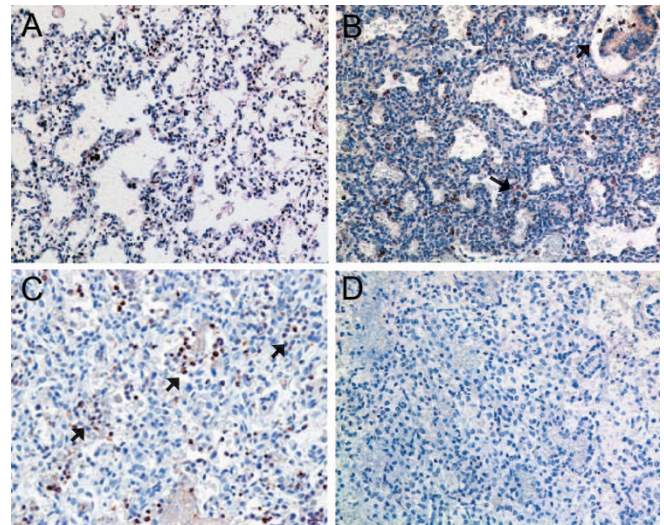


Figure 3. Comparison of TGF β_1 immunostaining in human lung specimens. (A) Control nonventilated infant at 23 wk GA; (B) Other pneumonia case at 24 wk GA ventilated for 2 d; and (C) *Ureaplasma*-infected infant at 26 wk GA ventilated for 20 d. Lung sections were incubated with anti-TGF β_1 antibody, stained with diaminobenzidine and counterstained with hematoxylin. Negative controls were processed in the absence of primary antibody (D) (Magnification 200 \times). In lung specimens from infants dying with acute bacterial or *Ureaplasma* pneumonia, immunostaining was concentrated in focal aggregates of alveolar and interstitial macrophages. Reprinted from Viscardi *et al.* *Pediatr Dev Pathol* 9:143–151, Copyright © 2006 Society for Pediatric Pathology and the Pediatric Pathology Society, with permission.

controls, *Ureaplasma*-infected lungs demonstrated 1) more extensive fibrosis, increased myofibroblast phenotype (Fig. 4) and TGF β_1 immunostaining (Fig. 5); 2) increased bronchoalveolar lavage concentrations of IL-1 β , and active TGF β_1 , but no differences in IL-10; and 3) a trend toward greater activation of pro-fibrotic transcription factors Smad-2 and -3 relative to anti-fibrotic Smad-7 in lung homogenates, suggesting an imbalance of pro- and anti-fibrotic signaling factors in the *Ureaplasma*-infected animals. In fetal sheep exposed to intra-amniotic *Ureaplasma* for periods up to 10 wks, long-term exposure was associated with improvement in lung function, but poor fetal growth, fetal acidemia, and evidence of fetal pulmonary inflammation (65). Intra-amniotic inoculation of *U. parvum* serovar 3 or 6 at mid-gestation in fetal sheep did not result in preterm labor, but did cause placental and fetal pulmonary inflammation and altered lung development whether delivery occurred preterm or at term (66). These data provide compelling evidence that antenatal *Ureaplasma* infection alters lung development and augments a prolonged, pro-inflammatory, pro-fibrotic response in the preterm lung exposed postnatally to ventilation and hyperoxia.

We propose that *Ureaplasma* may contribute to lung injury and fibrosis by modulating the local immune response to produce sustained chronic inflammation. Preterm infants with *Ureaplasma* respiratory colonization exhibited elevated tracheal aspirate IL-1 β , TNF- α , and monocyte chemoattractant protein-1 concentrations and neutrophil chemotactic activity during the first weeks of life compared with noncolonized infants (67–69). In the mouse *Ureaplasma* pneumonia model, intratracheal inoculation with *Ureaplasma* induced a pro-

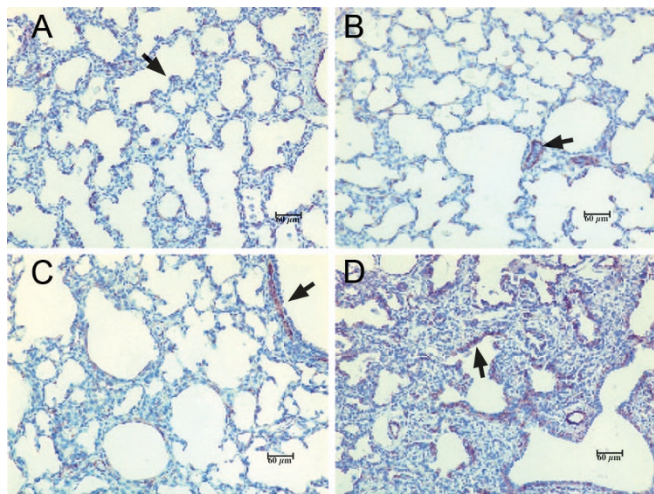


Figure 4. Alpha-SMA positive cells are increased in lung tissue from antenatal *Ureaplasma*-infected baboons. Lung sections were processed for immunohistochemical staining using a monoclonal anti-human antibody directed against α -SMA (arrows). A) 125d GC; B) 140d GC; C) 125d noninfected ventilated control; and D) 125d antenatal *Ureaplasma*-infected, ventilated baboon. Magnification 200X. Reprinted from Viscardi *et al.* *Pediatr Res* 60:141–146, Copyright © 2006 International Pediatric Research Foundation, Inc., with permission.

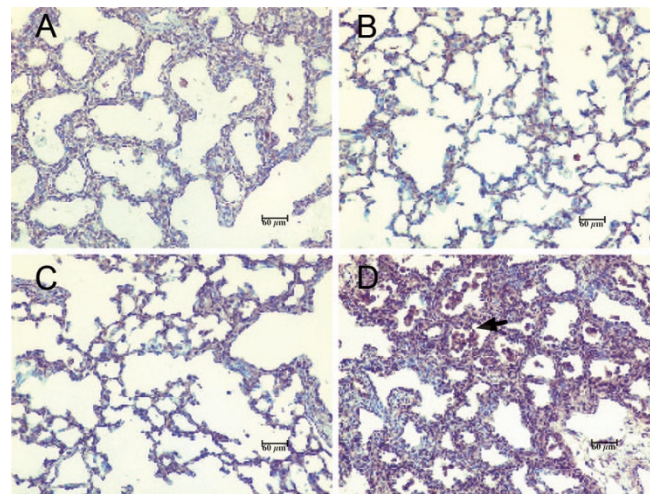


Figure 5. $TGF\beta_1$ immunostaining in lung specimens of antenatal *Ureaplasma*-exposed baboons is concentrated in focal aggregates of alveolar and interstitial macrophages. Lung sections were incubated with anti- $TGF\beta_1$ antibody, stained with diaminobenzidine and counterstained with hematoxylin. A) 125d GC; B) 140d GC; C) 125d noninfected ventilated control; and D) 125d antenatal *Ureaplasma*-infected, ventilated baboon. Magnification 200X. Reprinted from Viscardi *et al.* *Pediatr Res* 60:141–146, Copyright © 2006 International Pediatric Research Foundation, Inc., with permission.

longed inflammatory response as indicated by a sustained recruitment of neutrophils and macrophages into the lung (60).

The stimulatory effect of *Ureaplasma* on cytokine release has been confirmed *in vitro*. In cultured human cord blood preterm monocytes, *Ureaplasma* stimulated release of TNF- α and IL-8, and when co-administered with Gram-negative lipopolysaccharide (LPS), *Ureaplasma* greatly augmented generation of pro-inflammatory cytokines while blocking expression of the counter-regulatory cytokines, IL-6 and IL-10 (70). *Ureaplasma* stimulated TNF- α and IL-6 release, nitric oxide production, and up-regulation of iNOS, nuclear factor-kappa B (NF- κ B) activation, and VEGF and soluble and cell-associated ICAM-1 expression by human and murine derived monocytic cells (71–73). *Ureaplasma* induced apoptosis in A549 cells, a human type II cell line, and in THP-1 human monocytic cells (74). These effects could be partially blocked by anti-TNF- α MAb (73,74), implicating TNF- α as a mediator of the host immune response to this infection that contributes to altered lung development.

Ureaplasma TLR Signaling

The Toll like receptors (TLRs) are “pattern recognition receptors” that are key components of the innate immune response to microbial products (75). The TLR family responds to a broad range of pathogen-associated molecular patterns (PAMPs), including LPS, viral coat proteins, bacterial lipoproteins and glycolipids, viral RNA, and CpG-containing bacterial DNA (75). Engagement of TLR proteins activates the expression of pro-inflammatory mediators by macrophages, neutrophils, dendritic cells, B cells, endothelial cells, and epithelial cells.

Recent studies by Peltier *et al.* (76) and Shimizu *et al.* (77) demonstrated that Triton X-114 detergent extracted lipopro-

teins from *U. urealyticum* serovar 4 and *U. parvum* serovar 3, respectively, are responsible for NF- κ B activation. Active lipoproteins identified for serovar 3 included the MB antigen (77). The serovar 3 detergent extracts activated NF- κ B through TLR2 cooperatively with TLR1 and TLR6 (77), while serovar 4 extracts activated both TLR2 and TLR4 (76). Further studies will need to determine whether the different *Ureaplasma* species or serovars interact with different TLRs.

Little is known concerning TLR expression during human lung development. In mice, TLR2 and TLR4 mRNA levels were barely detectable early in gestation, increasing thereafter during late gestation and postnatally (78). In fetal sheep lung, TLR2 and TLR4 mRNA levels increased throughout late gestation to reach half of adult levels at term, but were induced by intra-amniotic LPS exposure (79). In the immature baboon model, TLR2 and TLR4 mRNA and protein expression were low in 125d and 140d nonventilated gestational controls, reached adult levels near term, and were increased in 125d preterm baboons ventilated with oxygen for 21 d (80). These data may explain, in part, the developmental susceptibility to *Ureaplasma* infection and interaction with other stimuli. Low TLR2 and 4 expression early in gestation may increase the susceptibility of the fetal lung to *Ureaplasma* infection and delay clearance, but postnatal exposures to mechanical ventilation, oxygen, and other infections, may stimulate pulmonary TLR expression and enhance *Ureaplasma*-mediated inflammatory signaling.

Therapeutic Considerations

Despite *in vitro* susceptibility of *Ureaplasma* to erythromycin, trials of erythromycin therapy in the first few weeks of life in *Ureaplasma* colonized preterm infants failed to demonstrate efficacy to prevent BPD or eradicate respiratory tract colonization (reviewed in (10)). Combined antibiotic treatment with ceftriax-

one, clindamycin, and erythromycin failed to eradicate *Mycoplasma* invasion of the amniotic cavity or resolve inflammation in most patients with preterm premature rupture of membranes (81). Lack of efficacy may have been due to the late timing or choice of antibiotic(s) or lack of combination with anti-inflammatory drugs. In an experimental *Ureaplasma* intraamniotic infection (IAI) in Rhesus monkeys, azithromycin alone or in combination with dexamethasone and indocin prevented fetal lung damage (Novy MJ *et al.*, Maternal azithromycin (AZI) therapy for *Ureaplasma* intraamniotic infection (IAI) prevents advanced fetal lung lesions in rhesus monkeys, 2008 SGI Annual Scientific Meeting, March 26–29, 2008, San Diego, CA, Abstract 438).

Eradicating *Ureaplasma* spp. from the pregnant female genital tract and/or fetal/newborn lung may be difficult. Clinical isolates may vary in susceptibility to macrolide antibiotics due to 1) mutations in 23S rRNA (82); 2) presence of co-infection with *Mycoplasma hominis* (83); and 3) differences in ability to form protective biofilms (84). The pharmacokinetics, pharmacodynamics, and safety of macrolides in newborns are unknown and would need to be established before a randomized placebo-controlled trial of efficacy of these antibiotics to eradicate *Ureaplasma* infection or prevent BPD in the preterm population can be done.

Studies of the *Ureaplasma* genome and insight into the pathogen-host interactions may identify alternative drug and vaccine targets and lead to the development of biomarkers for early detection of infection. If essential membrane transporters lacking significant homology with human proteins are identified in the *Ureaplasma* spp. genomes, they might be attractive therapeutic targets for small molecule inhibitors or vaccines (85). The TLR activating lipoproteins are additional attractive targets for drug and/or vaccine development. Since most *Ureaplasma* IAI's are subclinical, there are currently no effective strategies for screening for affected pregnancies. Proteomic analysis of AF (61) and cervical-vaginal fluid (62) in experimental Rhesus monkey *Ureaplasma* intraamniotic infection revealed unique proteins that may be useful as specific biomarkers for detection of early intraamniotic infection. Future studies will need to focus on strategies for prevention and early detection of *Ureaplasma* intraamniotic infection, and the development of optimal antibiotic therapy for treating the infection *in utero* to reduce preterm birth and in the preterm newborn to prevent BPD.

REFERENCES

- Jobe AH, Bancalari E 2001 Bronchopulmonary dysplasia. *Am J Respir Crit Care Med* 163:1723–1729
- Viscardi RM, Muhumuza CK, Rodriguez A, Fairchild KD, Sun CC, Gross GW, Campbell AB, Wilson PD, Hester L, Hasday JD 2004 Inflammatory markers in intrauterine and fetal blood and cerebrospinal fluid compartments are associated with adverse pulmonary and neurologic outcomes in preterm infants. *Pediatr Res* 55:1009–1017
- Husain AN, Siddiqui NH, Stocker JT 1998 Pathology of arrested acinar development in postsurfactant bronchopulmonary dysplasia. *Hum Pathol* 29:710–717
- Sanchez PJ, Regan JA 1988 *Ureaplasma urealyticum* colonization and chronic lung disease in low birth weight infants. *Pediatr Infect Dis J* 7:542–546
- Wang EE, Frayha H, Watts J, Hammerberg O, Chernesky MA, Mahony JB, Cassell GH 1988 Role of *Ureaplasma urealyticum* and other pathogens in the development of chronic lung disease of prematurity. *Pediatr Infect Dis J* 7:547–551
- Cassell GH, Waites KB, Crouse DT, Rudd PT, Canupp KC, Stagno S, Cutter GR 1988 Association of *Ureaplasma urealyticum* infection of the lower respiratory tract with chronic lung disease and death in very-low-birth-weight infants. *Lancet* 2: 240–244
- Wang EE, Ohlsson A, Kellner JD 1995 Association of *Ureaplasma urealyticum* colonization with chronic lung disease of prematurity: Results of a metaanalysis. *J Pediatr* 127:640–644
- Scheltonka RL, Katz B, Waites KB, Benjamin DK Jr 2005 Critical appraisal of the role of *Ureaplasma* in the development of bronchopulmonary dysplasia with meta-analytic techniques. *Pediatr Infect Dis J* 24:1033–1039
- Cassell GH, Waites KB, Watson HL, Crouse DT, Harasawa R 1993 *Ureaplasma urealyticum* intrauterine infection: role in prematurity and disease in newborns. *Clin Microbiol Rev* 6:69–87
- Waites KB, Katz B, Scheltonka RL 2005 Mycoplasmas and ureaplasmas as neonatal pathogens. *Clin Microbiol Rev* 18:757–789
- Volgmann T, Ohlinger R, Panzig B 2005 *Ureaplasma urealyticum*-harmless commensal or underestimated enemy of human reproduction? A review. *Arch Gynecol Obstet* 273:133–139
- Glass JI, Lefkowitz EJ, Glass JS, Heiner CR, Chen EY, Cassell GH 2000 The complete sequence of the mucosal pathogen *Ureaplasma urealyticum*. *Nature* 407:757–762
- Abele-Horn M, Wolff C, Dressel P, Pfaff F, Zimmermann A 1997 Association of *Ureaplasma urealyticum* biovars with clinical outcome for neonates, obstetric patients, and gynecological patients with pelvic inflammatory disease. *J Clin Microbiol* 35:1199–1202
- Grattard F, Soleihac B, De Barbeyrac B, Bebear C, Seffert P, Pozzetto B 1995 Epidemiologic and molecular investigations of genital mycoplasmas from women and neonates at delivery. *Pediatr Infect Dis J* 14:853–858
- Hannaford K, Todd DA, Jeffrey H, John E, Byth K, Gilbert GL 1999 Role of *Ureaplasma urealyticum* in lung disease of prematurity. *Arch Dis Child Fetal Neonatal Ed* 81:F162–F167
- Viscardi RM, Hashmi N, Gross GW, Sun CC, Rodriguez A, Fairchild KD 2008 Incidence of invasive ureaplasma in VLBW infants: relationship to severe intraventricular hemorrhage. *J Perinatol* 28:759–765
- Katz B, Patel P, Duffy L, Scheltonka RL, Dimmitt RA, Waites KB 2005 Characterization of ureaplasmas isolated from preterm infants with and without bronchopulmonary dysplasia. *J Clin Microbiol* 43:4852–4854
- Kirchner L, Helmer H, Heinze G, Wald M, Brunbauer M, Weninger M, Zaknun D 2007 Amnionitis with *Ureaplasma urealyticum* or other microbes leads to increased morbidity and prolonged hospitalization in very low birth weight infants. *Eur J Obstet Gynecol Reprod Biol* 134:44–50
- Yoon BH, Romero R, Kim M, Kim EC, Kim T, Park JS, Jun JK 2000 Clinical implications of detection of *Ureaplasma urealyticum* in the amniotic cavity with the polymerase chain reaction. *Am J Obstet Gynecol* 183:1130–1137
- Abele-Horn M, Peters J, Genzel-Boroviczeny O, Wolff C, Zimmermann A, Gottschling W 1997 Vaginal *Ureaplasma urealyticum* colonization: influence on pregnancy outcome and neonatal morbidity. *Infection* 25:286–291
- Kafetzis DA, Skevaki CL, Skouteri V, Gavrilis S, Peppas K, Kostalos C, Petrochilou V, Michalakis S 2004 Maternal genital colonization with *Ureaplasma urealyticum* promotes preterm delivery: association of the respiratory colonization of premature infants with chronic lung disease and increased mortality. *Clin Infect Dis* 39:1113–1122
- Colaizy TT, Morris CD, Lapidus J, Sklar RS, Pillers DA 2007 Detection of ureaplasma DNA in endotracheal samples is associated with bronchopulmonary dysplasia after adjustment for multiple risk factors. *Pediatr Res* 61:578–583
- Alfa MJ, Embree JE, Degagne P, Olson N, Lertzman J, MacDonald KS, MacDonald NT, Hall PF 1995 Transmission of *Ureaplasma urealyticum* from mothers to full and preterm infants. *Pediatr Infect Dis J* 14:341–345
- Iles R, Lyon A, Ross P, McIntosh N 1996 Infection with *Ureaplasma urealyticum* and *Mycoplasma hominis* and the development of chronic lung disease in preterm infants. *Acta Paediatr* 85:482–484
- Garland SM, Bowman ED 1996 Role of *Ureaplasma urealyticum* and *Chlamydia trachomatis* in lung disease in low birth weight infants. *Pathology* 28:266–269
- Pacifico L, Panero A, Roggini M, Rossi N, Bucci G, Chiesa C 1997 *Ureaplasma urealyticum* and pulmonary outcome in a neonatal intensive care population. *Pediatr Infect Dis J* 16:579–586
- Perzigian RW, Adams JT, Weiner GM, Dipietro MA, Blythe LK, Pierson CL, Faix RG 1998 *Ureaplasma urealyticum* and chronic lung disease in very low birth weight infants during the exogenous surfactant era. *Pediatr Infect Dis J* 17:620–625
- Abele-Horn M, Genzel-Boroviczeny O, Uhlig T, Zimmermann A, Peteres J, Scholz M 1998 *Ureaplasma urealyticum* colonization and bronchopulmonary dysplasia: a comparative prospective multicentre study. *Eur J Pediatr* 157:1004–1011
- Da Silva O, Gregson D, Hammerberg O 1997 Role of *Ureaplasma urealyticum* and *Chlamydia trachomatis* in development of bronchopulmonary dysplasia in very low birth weight infants. *Pediatr Infect Dis J* 16:364–369
- van Waarde WM, Brus F, Okken A, Kimpfen JL 1997 *Ureaplasma urealyticum* colonization, prematurity and bronchopulmonary dysplasia. *Eur Respir J* 10:886–890
- Courouclis XI, Welty SE, Ramsay PL, Wearden ME, Fuentes-Garcia FJ, Ni J, Jacobs TN, Towbin JA, Bowles NE 2000 Detection of microorganisms in the tracheal aspirates of preterm infants by polymerase chain reaction: association of adenovirus infection with bronchopulmonary dysplasia. *Pediatr Res* 47:225–232
- Heggie AD, Bar-Shain D, Boxerbaum B, Fanaroff AA, O'Riordan MA, Robertson JA 2001 Identification and quantification of ureaplasmas colonizing the respiratory tract and assessment of their role in the development of chronic lung disease in preterm infants. *Pediatr Infect Dis J* 20:854–859
- Honma Y, Yada Y, Takahashi N, Momoi MY, Nakamura Y 2007 Certain type of chronic lung disease of newborns is associated with *Ureaplasma urealyticum* infection in utero. *Pediatr Int* 49:479–484

34. Gray DJ, Robinson HB, Malone J, Thomson RB Jr 1992 Adverse outcome in pregnancy following amniotic fluid isolation of *Ureaplasma urealyticum*. *Prenat Diagn* 12:111–117
35. Horowitz S, Mazor M, Romero R, Horowitz J, Glezerman M 1995 Infection of the amniotic cavity with *Ureaplasma urealyticum* in the midtrimester of pregnancy. *J Reprod Med* 40:375–379
36. Berg TG, Philpot KL, Welsh MS, Sanger WG, Smith CV 1999 *Ureaplasma*/Mycoplasma-infected amniotic fluid: pregnancy outcome in treated and nontreated patients. *J Perinatol* 19:275–277
37. Perni SC, Vardhana S, Korneeva I, Tuttle SL, Paraskevas LR, Chasen ST, Kalish RB, Witkin SS Mycoplasma hominis and *Ureaplasma urealyticum* in midtrimester amniotic fluid: association with amniotic fluid cytokine levels and pregnancy outcome. *Am J Obstet Gynecol* 191:1382–1386, 2004
38. Bashiri A, Horowitz S, Huleihel M, Hackmon R, Dukler D, Mazor M 1999 Elevated concentrations of interleukin-6 in intra-amniotic infection with *Ureaplasma urealyticum* in asymptomatic women during genetic amniocentesis. *Acta Obstet Gynecol Scand* 78:379–382
39. Castro-Alcaraz S, Greenberg EM, Bateman DA, Regan JA 2002 Patterns of colonization with *Ureaplasma urealyticum* during neonatal intensive care unit hospitalizations of very low birth weight infants and the development of chronic lung disease. *Pediatrics* 110:e45
40. Goldenberg RL, Andrews WW, Goepfert AR, Faye-Petersen O, Cliver SP, Carlo WA, Hauth JC 2008 The Alabama Preterm Birth Study: umbilical cord blood *Ureaplasma urealyticum* and Mycoplasma hominis cultures in very preterm newborn infants. *Am J Obstet Gynecol* 198:43.e1–e5
41. Yoon BH, Romero R, Jun JK, Park KH, Park JD, Ghezzi F, Kim BI 1997 Amniotic fluid cytokines (interleukin-6, tumor necrosis factor- α , interleukin-1 β , and interleukin-8) and the risk for the development of bronchopulmonary dysplasia. *Am J Obstet Gynecol* 177:825–830
42. Bagchi A, Viscardi RM, Taciak V, Ensor JE, McCrea KA, Hasday JD 1994 Increased activity of interleukin-6 but not tumor necrosis factor- α in lung lavage of premature infants is associated with the development of bronchopulmonary dysplasia. *Pediatr Res* 36:244–252
43. Rindfleisch MS, Hasday JD, Taciak V, Broderick K, Viscardi RM 1996 Potential role of interleukin-1 in the development of bronchopulmonary dysplasia. *J Interferon Cytokine Res* 16:365–373
44. Viscardi RM, Hasday JD, Gumpfer KF, Taciak V, Campbell AB, Palmer TW 1997 Cromolyn sodium prophylaxis inhibits pulmonary proinflammatory cytokines in infants at high risk for bronchopulmonary dysplasia. *Am J Respir Crit Care Med* 156:1523–1529
45. Jones CA, Cayabyab RG, Kwong KY, Stotts C, Wong B, Hamdan H, Minoo P, deLemos RA 1996 Undetectable interleukin (IL)-10 and persistent IL-8 expression early in hyaline membrane disease: a possible developmental basis for the predisposition to chronic lung inflammation in preterm newborns. *Pediatr Res* 39:966–975
46. Bose CL, Dammann CE, Laughon MM 2008 Bronchopulmonary dysplasia and inflammatory biomarkers in the premature neonate. *Arch Dis Child Fetal Neonatal Ed* 93:F455–F461
47. Bry K, Whitsett JA, Lappalainen U 2007 IL-1 β disrupts postnatal lung morphogenesis in the mouse. *Am J Respir Cell Mol Biol* 36:32–42
48. Warburton D, Tefft D, Mailleux A, Bellusci S, Thiery JP, Zhao J, Buckley S, Shi W, Driscoll B 2001 Do lung remodeling, repair, and regeneration recapitulate respiratory ontogeny? *Am J Respir Crit Care Med* 164:S59–S62
49. Toti P, Buonocore G, Tanganelli P, Catella AM, Palmeri ML, Vatti R, Seemayer TA 1997 Bronchopulmonary dysplasia of the premature baby: an immunohistochemical study. *Pediatr Pulmonol* 24:22–28
50. Vicencio AG, Lee CG, Cho SJ, Eickelberg O, Chuu Y, Haddad GG, Elias JA 2004 Conditional overexpression of bioactive transforming growth factor- β 1 in neonatal mouse lung: a new model for bronchopulmonary dysplasia? *Am J Respir Cell Mol Biol* 31:650–656
51. Gauldie J, Galt T, Bonniaud P, Robbins C, Kelly M, Warburton D 2003 Transfer of the active form of transforming growth factor- β 1 gene to newborn rat lung induces changes consistent with bronchopulmonary dysplasia. *Am J Pathol* 163:2575–2584
52. Sime PJ, Marr RA, Gauldie D, Xing Z, Hewlett BR, Graham FL, Gauldie J 1998 Transfer of tumor necrosis factor- α to rat lung induces severe pulmonary inflammation and patchy interstitial fibrogenesis with induction of transforming growth factor- β 1 and myofibroblasts. *Am J Pathol* 153:825–832
53. Kolb M, Margetts P, Anthony D, Pitossi F, Gauldie J 2001 Transient expression of IL-1 β induces acute lung injury and chronic repair leading to pulmonary fibrosis. *J Clin Invest* 107:1529–1536
54. Lecart C, Cayabyab R, Buckley S, Morrison J, Kwong KY, Warburton D, Ramanathan R, Jones CA, Minoo P 2000 Bioactive transforming growth factor- β 1 in the lungs of extremely low birthweight neonates predicts the need for home oxygen supplementation. *Biol Neonate* 77:217–223
55. Viscardi RM, Manimtim WM, Sun CC, Duffy L, Cassell GH 2002 Lung pathology in premature infants with *Ureaplasma urealyticum* infection. *Pediatr Dev Pathol* 5:141–150
56. Viscardi R, Manimtim W, He JR, Hasday JD, Sun CC, Joyce B, Pierce RA 2006 Disordered pulmonary myofibroblast distribution and elastin expression in preterm infants with *Ureaplasma urealyticum* pneumonitis. *Pediatr Dev Pathol* 9:143–151
57. Walsh WF, Butler J, Coalson J, Hensley D, Cassell GH, deLemos RA 1993 A primate model of *Ureaplasma urealyticum* infection in the premature infant with hyaline membrane disease. *Clin Infect Dis* 17:S158–S162
58. Rudd PT, Cassell GH, Waites KB, Davis JK, Duffy LB 1989 *Ureaplasma urealyticum* pneumonia: experimental production and demonstration of age-related susceptibility. *Infect Immun* 57:918–925
59. Crouse DT, Cassell GH, Waites KB, Foster JM, Cassady G 1990 Hyperoxia potentiates *Ureaplasma urealyticum* pneumonia in newborn mice. *Infect Immun* 58:3487–3493
60. Viscardi RM, Kaplan J, Lovchik JC, He JR, Hester L, Rao S, Hasday JD 2002 Characterization of a murine model of *Ureaplasma urealyticum* pneumonia. *Infect Immun* 70:5721–5729
61. Gravett MG, Novy MJ, Rosenfeld RG, Reddy AP, Jacob T, Turner M, McCormack A, Lapidus JA, Hitti J, Eschenbach DA, Roberts CT Jr., Nagalla SR 2004 Diagnosis of intra-amniotic infection by proteomic profiling and identification of novel biomarkers. *JAMA* 292:462–469
62. Gravett MG, Thomas A, Schneider KA, Reddy AP, Dasari S, Jacob T, Lu X, Rodland M, Pereira L, Sadowsky DW, Roberts CT Jr., Novy MJ, Nagalla SR 2007 Proteomic analysis of cervical-vaginal fluid: identification of novel biomarkers for detection of intra-amniotic infection. *J Proteome Res* 6:89–96
63. Yoder BA, Coalson JJ, Winter VT, Siler-Khodr T, Duffy LB, Cassell GH 2003 Effects of antenatal colonization with *Ureaplasma urealyticum* on pulmonary disease in the immature baboon. *Pediatr Res* 54:797–807
64. Viscardi RM, Atamas SP, Luzina IG, Hasday JD, He JR, Sime PJ, Coalson JJ, Yoder BA 2006 Antenatal *Ureaplasma urealyticum* respiratory tract infection stimulates proinflammatory, profibrotic responses in the preterm baboon lung. *Pediatr Res* 60:141–146
65. Moss TJ, Nitsos I, Ikegami M, Jobe AH, Newnham JP 2005 Experimental intrauterine *Ureaplasma* infection in sheep. *Am J Obstet Gynecol* 192:1179–1186
66. Moss TJ, Knox CL, Kallapur SG, Nitsos I, Theodoropoulos C, Newnham JP, Ikegami M, Jobe AH 2008 Experimental amniotic fluid infection in sheep: effects of *Ureaplasma parvum* serovars 3 and 6 on preterm or term fetal sheep. *Am J Obstet Gynecol* 198:122.e1–e8
67. Groncek P, Goetze-Speer B, Speer CP 1996 Inflammatory bronchopulmonary response of preterm infants with microbial colonisation of the airways at birth. *Arch Dis Child Fetal Neonatal Ed* 74:F51–F55
68. Patterson AM, Taciak V, Lovchik J, Fox RE, Campbell AB, Viscardi RM 1998 *Ureaplasma urealyticum* respiratory tract colonization is associated with an increase in IL-1 β and TNF- α relative to IL-6 in tracheal aspirates of preterm infants. *Pediatr Infect Dis J* 17:321–328
69. Baier RJ, Loggins J, Kruger TE 2001 Monocyte chemoattractant protein-1 and interleukin-8 are increased in bronchopulmonary dysplasia: relation to isolation of *Ureaplasma urealyticum*. *J Investig Med* 49:362–369
70. Manimtim WM, Hasday JD, Hester L, Fairchild KD, Lovchik JC, Viscardi RM 2001 *Ureaplasma urealyticum* modulates endotoxin-induced cytokine release by human monocytes derived from preterm and term newborns and adults. *Infect Immun* 69:3906–3915
71. Li YH, Brauner A, Jonsson B, Van der Ploeg I, Soder O, Holst M, Jensen JS, Lagercrantz H, Tullus K 2000 *Ureaplasma urealyticum*-induced production of proinflammatory cytokines by macrophages. *Pediatr Res* 48:114–119
72. Li YH, Yan ZQ, Jensen JS, Tullus K, Brauner A 2000 Activation of nuclear factor kappaB and induction of inducible nitric oxide synthase by *ureaplasma urealyticum* in macrophages. *Infect Immun* 68:7087–7093
73. Li YH, Brauner A, Jensen JS, Tullus K 2002 Induction of human macrophage vascular endothelial growth factor and intercellular adhesion molecule-1 by *Ureaplasma urealyticum* and downregulation by steroids. *Biol Neonate* 82:22–28
74. Li YH, Chen M, Brauner A, Zheng C, Skov Jensen J, Tullus K 2002 *Ureaplasma urealyticum* induces apoptosis in human lung epithelial cells and macrophages. *Biol Neonate* 82:166–173
75. Kaisho T, Akira S 2004 Pleiotropic function of Toll-like receptors. *Microbes Infect* 6:1388–1394
76. Peltier MR, Freeman AJ, Mu HH, Cole BC 2007 Characterization of the macrophage-stimulating activity from *Ureaplasma urealyticum*. *Am J Reprod Immunol* 57:186–192
77. Shimizu T, Kida Y, Kuwano K 2008 *Ureaplasma parvum* lipoproteins, including MB antigen, activate NF- κ B through TLR1, TLR2 and TLR6. *Microbiology* 154:1318–1325
78. Harju K, Glumoff V, Hallman M 2001 Ontogeny of Toll-like receptors Tlr2 and Tlr4 in mice. *Pediatr Res* 49:81–83
79. Hillman NH, Moss TJ, Nitsos I, Kramer BW, Bachurski CJ, Ikegami M, Jobe AH, Kallapur SG 2008 Toll-like receptors and agonist responses in the developing fetal sheep lung. *Pediatr Res* 63:388–393
80. Awasthi S, Cropper J, Brown KM 2008 Developmental expression of Toll-like receptors-2 and -4 in preterm baboon lung. *Dev Comp Immunol* 32:1088–1098
81. Gomez R, Romero R, Nien JK, Medina L, Carstens M, Kim YM, Espinoza J, Chaiworapongsa T, Gonzalez R, Iams JD, Rojas I 2007 Antibiotic administration to patients with preterm premature rupture of membranes does not eradicate intra-amniotic infection. *J Matern Fetal Neonatal Med* 20:167–173
82. Dongya M, Wencheng X, Xiaobo M, Lu W 2008 Transition mutations in 23S rRNA account for acquired resistance to macrolides in *Ureaplasma urealyticum*. *Microb Drug Resist* 14:183–186
83. Huang C, Liu Z, Lin N, Tu Y, Li J, Zhang D 2003 Susceptibility of mixed infection of *Ureaplasma urealyticum* and *Mycoplasma hominis* to seven antimicrobial agents and comparison with that of *Ureaplasma urealyticum* infection. *J Huazhong Univ Sci Technol Med Sci* 23:203–205
84. Garcia-Castillo M, Morosini MI, Galvez M, Baquero F, Del Campo R, Meseguer MA 2008 Differences in biofilm development and antibiotic susceptibility among clinical *Ureaplasma urealyticum* and *Ureaplasma parvum* isolates. *J Antimicrob Chemother* 62:1027–1030
85. Sudhakar P, Subramani P 2007 The transportome of the human mucosal pathogen *Ureaplasma urealyticum*. *Lethbridge Undergraduate Research Journal* 2:1–15