

ORIGINAL ARTICLE

Bombesin induces cyclooxygenase-2 expression through the activation of the nuclear factor of activated T cells and enhances cell migration in Caco-2 colon carcinoma cells

RS Corral, MA Iñiguez, J Duque, R López-Pérez and M Fresno

Centro de Biología Molecular 'Severo Ochoa', Universidad Autónoma de Madrid-CSIC, Madrid, Spain

Cyclooxygenase-2 (Cox-2), the gastrin-release peptide (GRP) and its cognate receptor (GRP-R) are over-expressed in a significant percentage of colorectal carcinomas and are associated with cell growth, invasiveness and tumor progression. However, a molecular link between all of them in adenocarcinomas has not been established. Here, we show that bombesin (BBS), a GRP homolog, stimulates the expression of Cox-2 mRNA and protein in human colon adenocarcinoma Caco-2 cells, resulting in enhanced release of prostaglandin E₂. These effects were markedly inhibited by the specific BBS antagonist RC-3940-II. BBS promotes the activation of the nuclear factor of activated T cells (NFAT) through a Ca²⁺/calcineurin (Cn)-linked pathway. Upon BBS stimulation, the NFATc1 isoform translocates into the nucleus with a concomitant increase in NFATc1 binding to two specific recognition sites in the promoter region of the Cox-2 gene. Furthermore, inhibition of Cn activity by the immunosuppressive drug cyclosporin A impaired NFAT activation and diminished Cox-2 expression in BBS-stimulated cells. Interestingly, BBS pretreatment strongly enhances the invasive capacity of carcinoma cells, effect which was inhibited by a Cox-2-specific inhibitor. These findings provide the first evidence for the involvement of the Ca²⁺/Cn/NFAT pathway in BBS-mediated induction of genes involved in colon carcinoma invasiveness such as Cox-2.

Oncogene (2007) 26, 958–969. doi:10.1038/sj.onc.1209856; published online 14 August 2006

Keywords: cyclooxygenase-2; NFAT; bombesin; migration; colon carcinoma

Introduction

Cyclooxygenases (Cox-1 and Cox-2) are considered to play an important role in human colon cancer, one of the major causes of mortality in developed countries

(Kawai *et al.*, 2002). These enzymes catalyse the conversion of arachidonic acid to prostaglandins (PGs) and other eicosanoids. Cox-1 isoform is constitutively expressed in many human tissues. In contrast, Cox-2 is present at very low levels under basal conditions, but is rapidly induced in response to a panel of inflammatory, mitogenic and pro-oncogenic stimuli in a wide variety of cell types, including cancer cells (reviewed by Smith *et al.*, 2000). Considerable interest is currently focused on Cox-2 as a potential therapeutic target for the prevention and treatment of cancer (Kawai *et al.*, 2002; Iniguez *et al.*, 2003). Numerous studies indicate that Cox-2 is overexpressed in 85–90% of cancerous tissues from human colon and inhibition of Cox-2 by non-steroidal anti-inflammatory drugs decreases the risk of colorectal cancer (revised by Gupta and Dubois, 2001; Chan, 2002). Experiments with *Apc* gene-deficient mice (Min mice) and *Apc*^{Δ716}/*Cox-2* double-knockout mice revealed that either pharmacologic inhibition or genetic ablation of Cox-2 resulted in reduced intestinal tumorigenesis (Oshima *et al.*, 1996; Williams *et al.*, 1996). Enhanced synthesis of Cox-2-derived PGs may favor tumor growth by stimulating cell proliferation, promoting angiogenesis, inducing local immunosuppression, increasing invasiveness and inhibiting apoptosis (Kawai *et al.*, 2002; Iniguez *et al.*, 2003). Nevertheless, Cox-2-specific inhibitors may significantly increase cardiovascular risk (Bresalier *et al.*, 2005) and some clinical trials indicate that the Cox-2 inhibitor Rofecoxib has little effect on proliferation or apoptosis of colorectal cancer liver metastases (Fenwick *et al.*, 2003).

The mechanisms leading to enhanced Cox-2 expression in intestinal epithelial cells have not been fully elucidated. Both transcriptional and post-transcriptional mechanisms regulate Cox-2 expression in colon carcinoma (Shao *et al.*, 2000; Cheng and Harris, 2002; Inoue *et al.*, 2002; Ramsay *et al.*, 2003; Dixon, 2004). Moreover, depending on the stimuli, multiple signaling pathways including mitogen-activated protein kinases extracellular signal-regulated kinase 1/2, c-Jun N-terminal kinase and p38 have been shown to mediate Cox-2 induction in human colon cancer cells (Guo *et al.*, 2001; Liu *et al.*, 2003; Shao *et al.*, 2004; Sun and Sinicropo, 2005).

On the other hand, nuclear factor of activated T cells (NFAT) is required for optimal induction of Cox-2 promoter activity in a diversity of cell types (Robida

Correspondence: Professor M Fresno, Centro de Biología Molecular 'Severo Ochoa', Universidad Autónoma de Madrid, Cantoblanco, E-28049 Madrid, Spain.

E-mail: mfresno@cbm.uam.es

Received 15 March 2006; revised 15 June 2006; accepted 30 June 2006; published online 14 August 2006

et al., 2000; Iniguez *et al.*, 2000; Hernandez *et al.*, 2001; Lara-Pezzi *et al.*, 2002; Duque *et al.*, 2005). The NFAT family includes four 'classical' members that display a high degree of homology: NFATc2 (also called NFAT1 or NFATp), NFATc1 (2 or c), NFATc3 (4) and NFATc4 (Hogan *et al.*, 2003). NFAT exists in a highly phosphorylated form in the cytoplasm, which translocates into the nucleus upon dephosphorylation by the phosphatase calcineurin (Cn) in response to increases in intracellular calcium ($[Ca^{2+}]_i$), where it binds to enhancer elements of specific genes leading to transcriptional activation. Cn activity can be blocked by cyclosporin A (CsA), thereby preventing the nuclear translocation of NFAT (Hogan *et al.*, 2003). Although many stimuli have been demonstrated to be able to induce this signaling pathway in non-immune cells (Hogan *et al.*, 2003), the physiological agents that lead to the activation of NFAT in tumor cells have not been established.

Recent studies have described that bombesin (BBS), a homologue of the mammalian gastrin-release peptide (GRP), induces Cox-2 expression in fibroblasts and epithelial cells, requiring an increase in $[Ca^{2+}]_i$ (Hecht *et al.*, 1997; Guo *et al.*, 2001). Even more, GRP and its cognate G-protein-coupled receptor (GRP-R), as well as Cox-2, are overexpressed in a substantial fraction of human colorectal carcinomas (38–76%) (Preston *et al.*, 1995; Carroll *et al.*, 1999, 2000; Gupta and Dubois, 2001; Jensen *et al.*, 2001). BBS/GRP are neurotransmitters expressed mainly in nerve fibers throughout the mammalian gut and in the central nervous system. In addition to their physiological neuroendocrine actions, BBS/GRP have growth-promoting activity in various cancers, including pancreatic, prostate, mammary and small-cell lung carcinomas, which may secrete BBS/GRP in an autocrine manner (Cuttitta *et al.*, 1985). Conversely, BBS/GRP antagonists can effectively inhibit tumor growth and slow the progression of pre-malignant lesions (Iishi *et al.*, 2003; Kanashiro *et al.*, 2003; Yegen, 2003). The abnormal expression of BBS/GRP and GRP-R in human colon cancers has been correlated with more invasive characteristics of these tumors. Several reports show that BBS induces morphological and adhesive, rather than proliferative, effects on human colon carcinoma cells, suggesting that expression of BBS/GRP-R may regulate cell differentiation and thus contribute to their malignant properties (Saurin *et al.*, 1999, 2002; Jensen *et al.*, 2001).

Altogether, these observations prompted us to examine the regulation of Cox-2 expression by BBS in human colon adenocarcinoma cell lines. Our results show that induction of Cox-2 expression by BBS in these cells requires activation of the Ca^{2+} /Cn/NFAT pathway. NFAT is translocated to the nucleus upon BBS stimulation where it binds to NFAT response elements in the promoter region of Cox-2 gene that are essential for Cox-2 transcriptional induction. Moreover, BBS through Cox-2 induction promotes migration of colon carcinoma cells. These findings demonstrate the participation of NFAT in BBS-mediated induction of genes involved in colon carcinoma invasiveness such as Cox-2.

Results

BBS stimulates Cox-2 expression and PGE₂ production
BBS induced a dose-dependent increase in the expression of Cox-2 mRNA in serum-starved Caco-2 cells, reaching maximum levels in cells treated with 100 and 1000 nM BBS, although some effect can be seen at 10 nM (Figure 1a). Kinetics experiments showed maximal induction of Cox-2 after 4 h incubation in the presence of BBS (Figure 1b). Analysis of Cox-2 protein levels by Western blot also revealed a time-dependent increase that was clearly observed at 4 h following BBS (100 nM) stimulation, with the highest expression between 8 and 24 h (Figure 1c). Interestingly, Cox-2 protein induction was markedly inhibited by RC-3940-II, a well-known BBS/GRP-R antagonist (Cai *et al.*, 1994), indicating the specificity of BBS action (Figure 1c). Expression of the non-inducible Cox-1 isoform was almost negligible, and was not affected by BBS treatment (not shown).

To assess whether induction of Cox-2 expression was associated with an increase in enzymatic activity, prostaglandin E₂ (PGE₂) release by Caco-2 cells was measured. BBS (100 nM) induced a significant time-dependent release of PGE₂ to the media compared to untreated cells over a period of 24 h ($P < 0.001$) (Figure 1d). PGE₂ levels were drastically reduced in the supernatant from cells incubated in the presence of a Cox-2-selective inhibitor (NS398 1 μ M) ($P < 0.02$), further confirming the involvement of Cox-2 in the increase of PGE₂ production upon BBS stimulation. Similar induction was observed in other carcinoma cell lines as HT-29 (data not shown).

Involvement of Ca²⁺/Cn signaling pathway in BBS-mediated upregulation of Cox-2 expression

Agonist binding to GRP-R results in the rapid release of Ca^{2+} from inositol 1,4,5-triphosphate-sensitive stores (Hellmich *et al.*, 1999). To test whether BBS induced an increase in $[Ca^{2+}]_i$, Caco-2 cells were loaded with the Ca^{2+} indicator dye Fura-2/AM and stimulated with BBS (100 nM) in the presence or absence of the BBS antagonist RC-3940-II. BBS elicited a rapid increase in $[Ca^{2+}]_i$, which was blocked by pretreating the cells with RC-3940-II (10 nM) (Figure 2a), confirming the expression of functional BBS/GRP-R on these cells (Carroll *et al.*, 2000). This augmentation in $[Ca^{2+}]_i$ could mediate activation of Cn, thus leading to NFAT activation and subsequently to Cox-2 induction. As shown in Figure 2b, inhibition of Cn activity by CsA treatment diminished Cox-2 protein expression induced by BBS. Accordingly, CsA-mediated inhibition of Cox-2 expression results in a significant ($P < 0.05$) reduction in BBS-induced PGE₂ production (Figure 1d). Taken together, these data suggest that BBS upregulation of Cox-2 expression in Caco-2 cells requires an increase in $[Ca^{2+}]_i$ and a subsequent Cn activation.

BBS induces nuclear translocation of NFAT and its binding to DNA

We next investigated whether NFAT, a Ca^{2+} /Cn-regulated transcription factor, participates in Cox-2

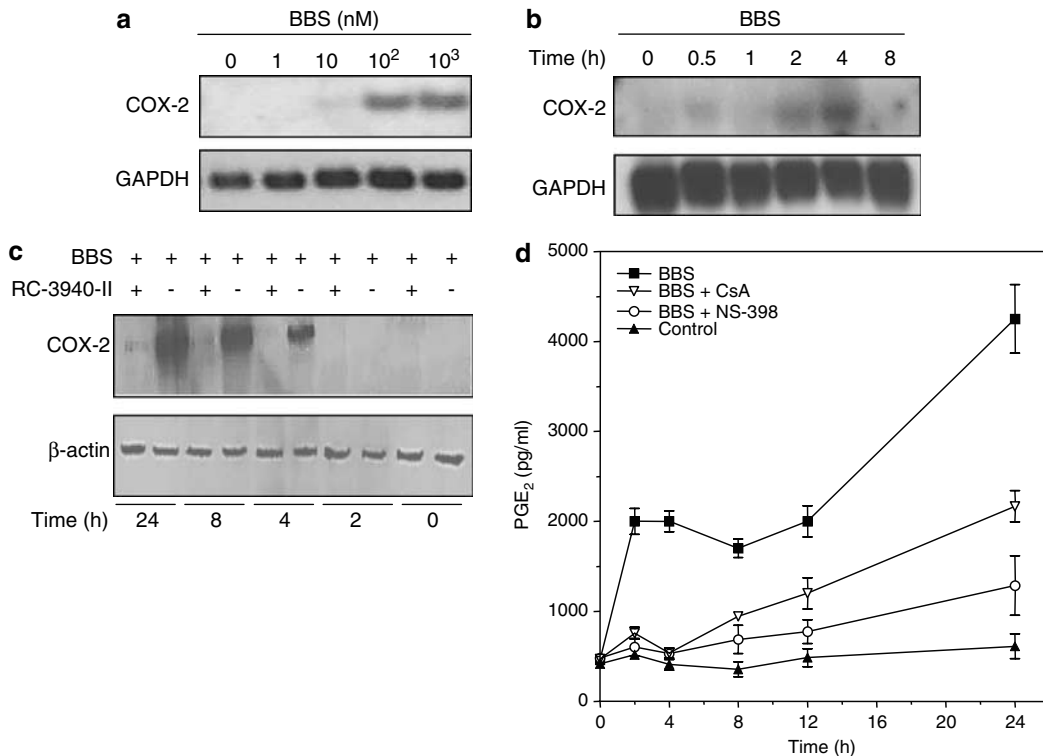


Figure 1 BBS increases Cox-2 expression and PGE₂ production in Caco-2 cells. **(a)** Dose effect of BBS on Cox-2 mRNA expression. Serum-starved Caco-2 cells were treated with the indicated concentration of BBS for 4 h, and the levels of Cox-2 mRNA were assessed by Northern blot. GAPDH levels were measured as a control of loading. **(b)** Time course of Cox-2 mRNA expression. Caco-2 cells were treated with BBS (100 nM) for the indicated times (hours) and mRNA levels of Cox-2 and GAPDH determined by Northern blot. **(c)** Time course of Cox-2 protein expression. Caco-2 cells were incubated with BBS (100 nM), in the presence or in the absence of the specific BBS antagonist RC-3940-II (10 nM) for the indicated times, and Cox-2 and β -actin proteins were analysed by Western blotting as described under 'Materials and methods'. **(d)** Induction of PGE₂ synthesis by BBS. Caco-2 cells were pretreated or not with 1 μ M NS398 or 200 ng/ml CsA for 2 h and subsequently treated with or without BBS (100 nM) for an additional 24 h. PGE₂ levels were determined by enzyme immunoassay in the supernatants.

induction by BBS. Our results showed that NFATc1 is present in the cytoplasm of untreated Caco-2 cells and is rapidly (30 min) dephosphorylated upon BBS stimulation and translocated into the nucleus (Figure 3a). Pretreatment with CsA (1 μ g/ml) inhibited NFAT translocation, thereby resulting in an accumulation of cytoplasmic NFATc1 protein.

To analyse DNA binding of BBS-activated NFAT to the distal NFAT (dNFAT) and proximal NFAT (pNFAT) sequences of the human Cox-2 promoter, we performed electrophoretic mobility shift assays (EMSA) with nuclear extracts of Caco-2 cells treated with BBS (100 nM) or calcium ionophore A23187 (Ion, 1 μ M) as a control, using oligonucleotides from pNFAT or dNFAT sites of Cox-2 promoter (Iniguez *et al.*, 2000) (Figure 3b). Both the pNFAT and dNFAT Cox-2 probes specifically bound nuclear proteins from Caco-2 cells. The retarded complexes were efficiently competed with a 20-fold molar excess of the respective cold oligonucleotides. Although some constitutive binding was observed in unstimulated cells, especially to the pNFAT probe, BBS induced an enhanced binding to the same level than Ion. Furthermore, these inducible complexes were severely diminished in nuclear extracts from cells stimulated with BBS in the presence of CsA.

To determine unambiguously the presence of the NFATc1 protein in the bands, we performed EMSAs using an anti-NFATc1 polyclonal antiserum, which clearly prevented the binding of specific complexes allowing the formation of more retarded complexes likely constituted by DNA/NFAT/antibody. As a control, EMSAs were carried out in the presence of preimmune serum (Figure 3b). These data suggest that the binding of NFATc1 protein to the Cox-2 dNFAT and pNFAT sites in response to BBS treatment of Caco-2 cells.

Transcriptional regulation of the Cox-2 promoter by BBS
We next analysed whether the effect of BBS on Cox-2 expression was taking place at the transcriptional level. For this, Caco-2 cells were transfected with a Cox-2 promoter/luciferase construct spanning from nucleotide -1796 to +104 bp relative to the human Cox-2 gene transcription start site (P2-1900-Cox-2-LUC) (Iniguez *et al.*, 2000). As shown in Figure 4, BBS (100 nM) induced a fourfold increase ($P < 0.001$) in luciferase activity in transiently transfected cells compared to untreated controls. CsA treatment significantly inhibited BBS-mediated induction of Cox-2 promoter.

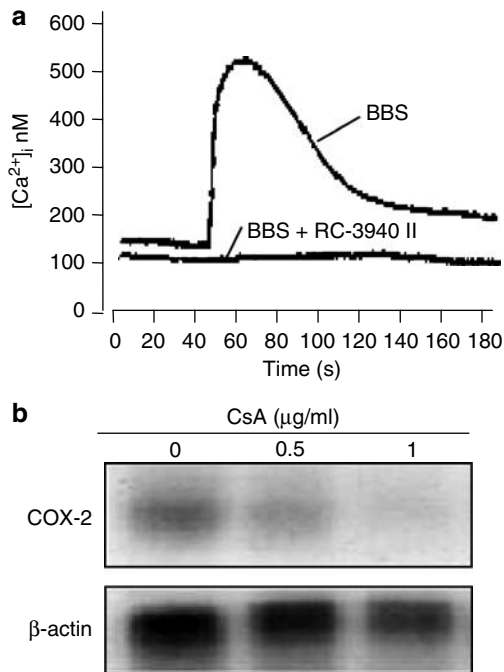


Figure 2 BBS-mediated upregulation of Cox-2 expression requires Cn activation. **(a)** Caco-2 cells were loaded with the Ca²⁺ indicator dye Fura-2/AM and changes in [Ca²⁺]_i upon BBS treatment were recorded in the presence or absence of the BBS/GRP-R selective antagonist RC-3940-II. **(b)** Effect of CsA on Cox-2 protein expression. Protein extracts from Caco-2 cells were treated or not with the indicated concentration of CsA 30 min before BBS stimulation for 6 h and analysed by Western blotting. β-Actin protein levels were determined as a control of loading.

To map the region responsible for BBS inducibility, we used Cox-2 promoter deletion constructs. BBS significantly induced transcription driven by constructs with deletions up to -88 of the Cox-2 promoter region (P2-1900 to P2-192), although a statistically significant decrease in inducibility was observed in P2-192 construct that contains the pNFAT site (Figure 5a). However, deletion of *cis*-acting elements mapping between the nucleotides at positions -88 and -46 in the promoter region completely abolished the BBS-mediated increase of luciferase activity.

Given the relevance of the region spanning from nucleotides -170 to -46 for the induction of the Cox-2 promoter by BBS, we next determined the contribution of the two NFAT sites present in this region to the overall transcriptional regulation of the Cox-2 promoter by BBS by using the P2-274 containing specific mutations within the dNFAT site, the pNFAT site or both (Iniguez *et al.*, 2000). Transfection experiments showed that mutation of the dNFAT (P2-274 dNFAT mut) or pNFAT (P2-274 pNFAT mut) sites resulted in a 29 and a 49% loss in the BBS-induced Cox-2 promoter activity, respectively, whereas double mutation of both NFAT (P2-274 p- and dNFAT mut) sites drastically reduced the activation of the promoter by BBS. Mutagenesis of the AP-1-like site (P2-274 AP-1 mut) also affected the inducibility of the Cox-2 promoter by

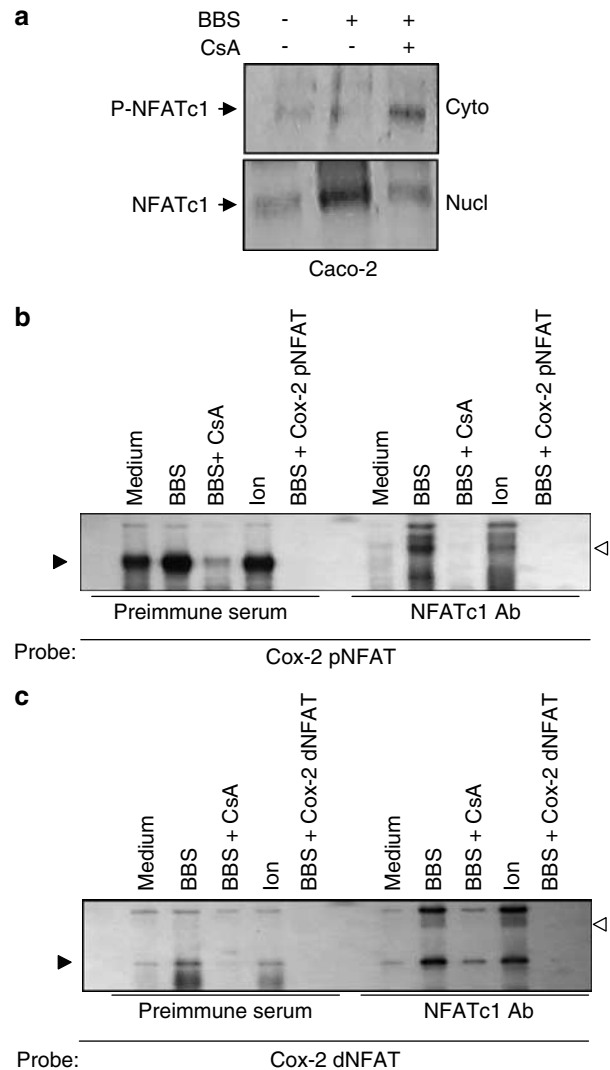


Figure 3 BBS induces NFAT activation in Caco-2 cells. **(a)** Activation of NFATc1 in Caco-2 colon carcinoma cells. Caco-2 cells were incubated for 30 min with BBS (100 nM). CsA (1 µg/ml) was added 30 min before stimulation. Fractionated extracts from both untreated and treated cells were analysed by Western blotting with an antiserum to NFATc1. Arrows indicate the phosphorylated cytosolic or dephosphorylated nuclear forms of NFATc1. Cyto, cytosolic extracts; Nucl, nuclear extracts. **(b)** EMSA analysis of NFATc1 binding to the pNFAT and dNFAT sites of the human Cox-2 gene (Cox-2 pNFAT and dNFAT, respectively). Caco-2 cells were incubated with medium, BBS in the presence or absence of CsA or with calcium Ion (0.5 µM) for 30 min as indicated. Nuclear extracts were analysed by EMSA using Cox-2 pNFAT (upper panel) or Cox-2 dNFAT (lower panel) radiolabeled probes. A 50-fold molar excess of unlabeled Cox-2 pNFAT and dNFAT oligonucleotides (BBS + Cox-2 pNFAT and BBS + Cox-2 dNFAT, respectively) was added to determine specific binding. The NFATc1 antiserum (NFATc1 Ab) or preimmune serum was added to the extracts before incubation with the probes. Closed arrows indicate specific complexes. White arrows indicate supershifted complexes.

BBS, reflecting a possible contribution of AP-1 to BBS-mediated Cox-2 induction (Figure 5b).

To further confirm the involvement of NFAT activation in the transcriptional regulation mediated by BBS in Caco-2 cells, we co-transfected expression

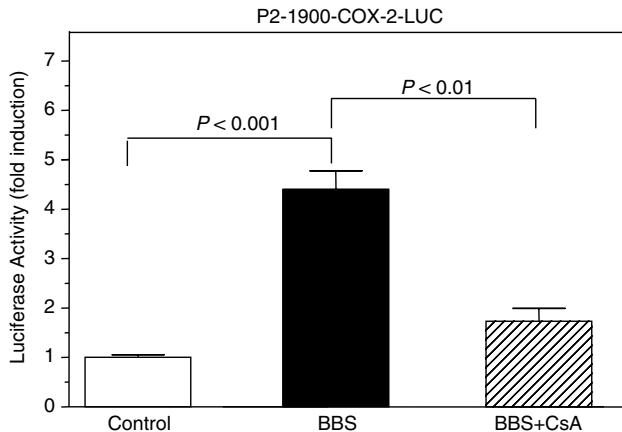


Figure 4 Effect of CsA on the BBS-mediated inducibility of the Cox-2 promoter. Caco-2 cells were transiently transfected with the P2-1900-Cox-2-LUC reporter construct and stimulated with BBS (100 nM) in the presence or absence of CsA (100 ng/ml) for 16 h. Luciferase activity is expressed as fold induction relative to the transfection with empty expression vector. Data are the mean \pm s.e. of three independent experiments, each performed in triplicate. Differences between BBS and BBS + CsA, and between BBS and the control were significant at $P < 0.01$ and $P < 0.001$, respectively.

vectors, encoding either a functional NFATc2 protein (hemagglutinin (HA)-NFAT) or a dominant-negative version of NFATc1 (dnNFAT), together with the P2-274-Cox-2-LUC or the NFAT-LUC reporter plasmids. BBS treatment was able to activate both reporters and to augment the induction mediated by overexpression of HA-NFAT. More interestingly, expression of dnNFAT, previously described to abolish NFAT-dependent promoter activity (Iniguez *et al.*, 2000), abrogated BBS-induced transcription of both reporters (Figure 6a and b), further supporting the hypothesis of the involvement of NFAT signaling in the regulation of Cox-2 gene expression by BBS. A similar pattern was observed using phorbol 12-myristate 13-acetate (PMA) + Ion as stimuli for both NFAT-LUC and P2-274-Cox-2-LUC reporters (Figure 6c and d).

BBS stimulates Caco-2 cells invasiveness

Previous results have described the ability of BBS to alter the morphology of colon carcinoma cells increasing tumor invasiveness (Saurin *et al.*, 1999, 2002). Thus, we investigated whether this kind of modifications effectively occurred in BBS-treated Caco-2 cells, largely reputed as poorly aggressive (Engle *et al.*, 1998). For this, we used a Matrigel Chamber invasion assay. Under our experimental conditions, this cell type was not able to pass through the Matrigel + membrane barrier when fetal calf serum (FCS)-free Dulbecco's modified Eagle's medium (DMEM) was introduced into the lower compartment. There was a small number of invading cells when FCS-supplemented medium was used in place of serum-free DMEM (Figure 7a). As reported previously (Kermorgant *et al.*, 2001), when 100 ng/ml of hepatocyte growth factor (HGF) were added to the FCS-DMEM, there was a substantial increase in the

number of invading cells. BBS addition to either FCS-free or FCS-supplemented medium slightly induced (around twofold) the migration of Caco-2 cells. Interestingly, when Caco cells were pretreated for 3 days in the presence of 100 nM BBS and then subjected to *in vitro* invasion assay, a significant ($P < 0.05$) increase in cell invasiveness could be observed, independently from the chemoattractants (e.g. FCS-supplemented DMEM with or without BBS or HGF) dispensed into the lower chamber (Figure 7b). The MDA-MB-231 human breast carcinoma cell line, showing marked invasion capacity in Transwell assays (Munoz-Najar *et al.*, 2006) was used as a positive control. More interestingly, the enhancing effect of BBS treatment was completely abolished by addition of the BBS receptor antagonist RC-3940-II (10 nM) during pretreatment of Caco-2 cells ($P < 0.01$). Similarly, inhibition of Cox-2 by 10 μ M NS-398 significantly ($P < 0.05$) decreased BBS-induced cell invasion by 67% on average (Figure 7c). BBS was also able to induce migration in Transwell assays of another human carcinoma cell line as HT29 to the same extent to that promoted by pre-incubation of those cells with PGE₂ (Figure 7d).

Discussion

Aberrant expression of Cox-2, BBS/GRP and GRP-R has been observed in a variety of tumors, including colorectal carcinomas (Preston *et al.*, 1995; Carroll *et al.*, 1999, 2000; Gupta and Dubois, 2001; Jensen *et al.*, 2001) and several lines of evidence suggest a link among these proteins in cancer progression (Hecht *et al.*, 1997; Guo *et al.*, 2001; Iishi *et al.*, 2003). We have analysed the potential association between BBS-mediated signaling and Cox-2 in colon carcinoma cells, demonstrating that BBS stimulation of Caco-2 cells leads to a rapid upregulation of Cox-2 expression at both mRNA and protein levels resulting in increased production of PGE₂. This effect can be attributed to BBS binding to a functional GRP-R that mediates mobilization of intracellular Ca²⁺, likely through a G α_q protein, as it was blocked by the specific antagonist RC-3940-II. This effect was clearly observed at 100 nM BBS, which is higher than the reported IC₅₀ for the binding to the receptor (around 1 nM) (Ryan *et al.*, 1999). However, the affinity of labeled peptides for the receptor does not always correlate with the concentrations required to observe a functional effect. Moreover, peptidases present in the serum may interfere with BBS/GRP and GRP-R binding or function (Jensen *et al.*, 2001), which may explain the discrepancies between data of binding affinities (measured in the absence of serum and after short periods of incubation) and concentrations reported for biological effects (requiring a longer period of incubation in the presence of serum). In this regard, similar concentrations of GRP/BBS as those used in our study have been reported for the induction of Cox-2 in other cell types (Hecht *et al.*, 1997; Guo *et al.*, 2001) as well as for regulating motility of Caco-2 cells upon BBS treatment (Glover *et al.*, 2005).

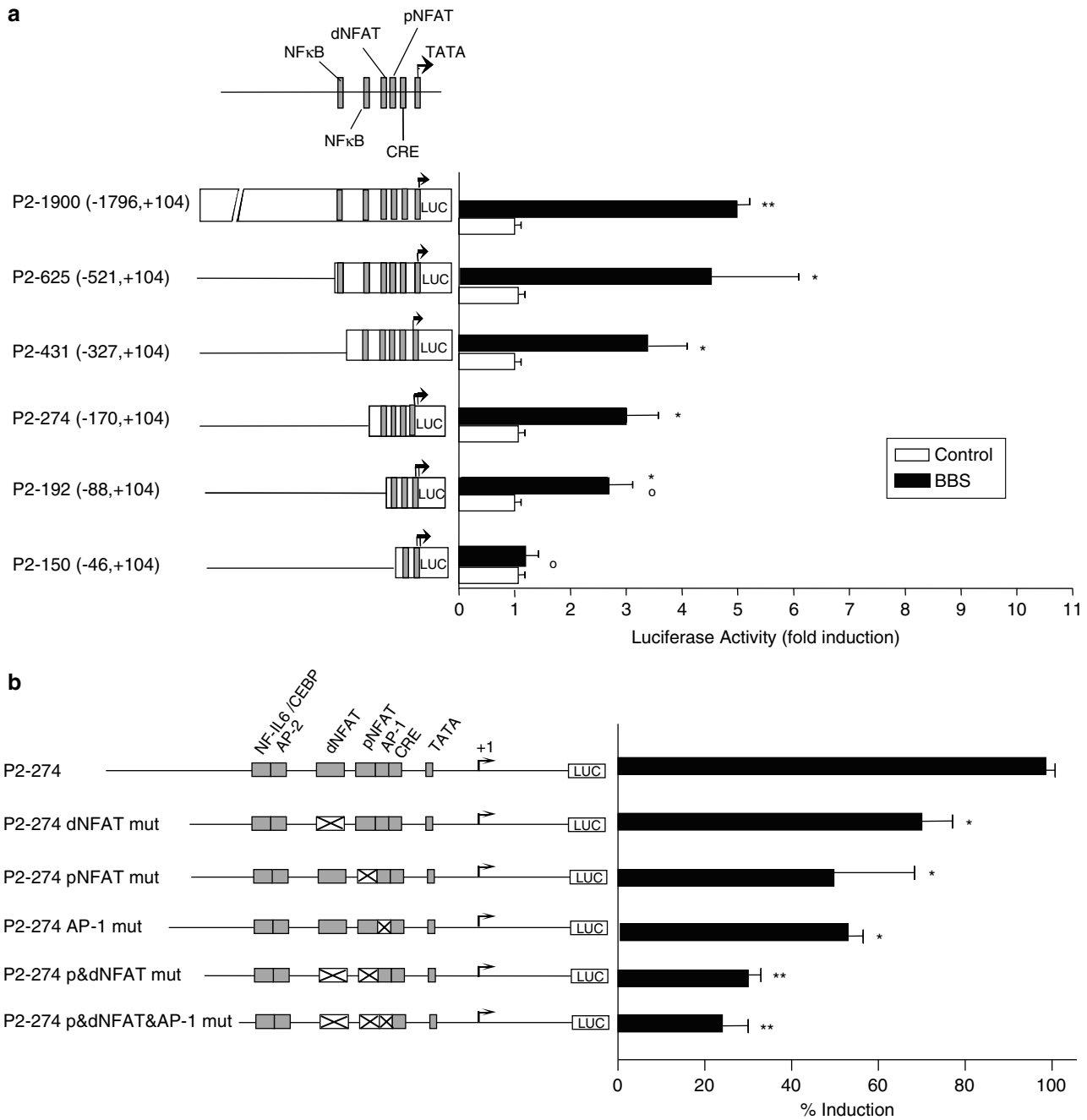


Figure 5 Analysis of Cox-2 transcriptional activity in Caco-2 cells stimulated with BBS. **(a)** Activation of Cox-2 gene promoter by BBS. Caco-2 cells were transfected with the different Cox-2 promoter reporter and cultured in the absence (Control) or presence of BBS (100 nM) for an additional 16-h period and assayed for luciferase activity. Results from triplicate assays of three independent experiments are shown as mean fold induction \pm s.e. Deletions ranging from -1796 to -46 relative to the transcription start site of the Cox-2 promoter were used. Consensus sequences are denoted by boxes. The asterisks indicate statistically significant differences ($*P < 0.05$; $**P < 0.001$) between BBS and control samples; ($^{\circ}P < 0.05$ respect to the longest construct P2-1900). **(b)** Role of NFAT in Cox-2 promoter induction by BBS. Caco-2 cells were transiently transfected with the P2-274-Cox-2 promoter construct, and the same construct containing dNFAT and/or pNFAT sites, and/or AP-1 site mutated (indicated by X). Three hours after transfection, the cells were stimulated with BBS (100 nM) for 16 h and luciferase activity was determined. The activity is expressed as percentage of induction relative to that achieved in cells transfected with the P2-274-Cox-2 promoter construct. One out of three separate experiments performed is shown.

Moreover, our results point out to the Ca^{2+}/Cn /NFAT pathway as an important signaling cascade in BBS-GRP-R-mediated events as Cox-2 induction. Previous reports have shown that NFAT proteins are

key factors for the transcriptional regulation of the Cox-2 gene in many different cell types (Iniguez *et al.*, 2000; Robida *et al.*, 2000; Hernandez *et al.*, 2001; Lara-Pezzi *et al.*, 2002; Duque *et al.*, 2005; Yiu and Toker, 2006).

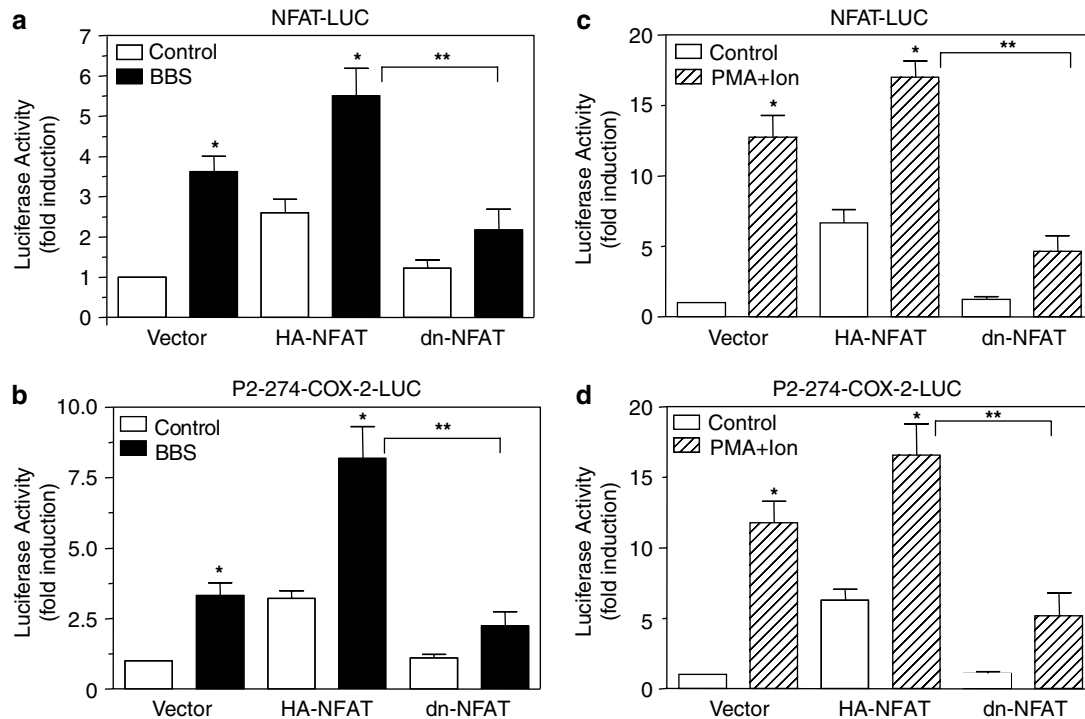


Figure 6 Involvement of the NFAT in Cox-2 induction by BBS in Caco-2 cells. Cells were transiently co-transfected with the P2-274-Cox-2-LUC or the NFAT-LUC reporter plasmid along with empty vector, HA-NFAT or dnNFAT. Transfected cells were untreated (Control), or treated with BBS (100 nM) or PMA (15 ng/ml) plus Ion (1 μ M) for 16 h. Luciferase activity is expressed as fold induction (mean \pm s.e. of triplicate determinations). Data are representative of three independent experiments. The asterisks indicate statistically significant differences ($P < 0.05$; *between BBS (or PMA + Ion) and control samples; **between HA-NFAT and dnNFAT transfected expression vectors to BBS (or PMA + Ion)-treated cells).

Two NFAT binding sites in the Cox-2 promoter are essential for BBS-induced expression of Cox-2, one of them resembling an NFAT/AP-1 composite site. Mutation of either the NFAT or the AP-1 component of this site strongly diminished BBS-induced Cox-2 transcription in agreement with the well-known cooperation between NFAT and AP-1 necessary to drive efficiently transcription of a variety of NFAT-dependent genes (Hogan *et al.*, 2003). In RIE/GPRP-R cells, BBS-mediated transcriptional induction of the Cox-2 gene is also calcium dependent, requiring activation of components of the AP-1 transcription factor complex, such as Fos/Jun proteins (Guo *et al.*, 2001). Moreover, involvement of G α q-coupled receptors as the GRP-R in the activation of NFAT and in the induction of NFAT-dependent genes has been described in a variety of cell types (Boss *et al.*, 1996; Horsley and Pavlath, 2002; Liu *et al.*, 2004). Noticeably, recent reports have proposed that NFAT proteins may play an important role in cancer, having shown a direct involvement of NFAT-mediated transcriptional regulation of different genes, including Cox-2 (Jauliac *et al.*, 2002; Lara-Pezzi *et al.*, 2002; Saurin *et al.*, 2002; Neal and Clipstone, 2003; Holzmann *et al.*, 2004; Yiu and Toker, 2006).

As mentioned above, GRP-R and Cox-2 expression in human colon cancer cells correlates with more invasive characteristics. Our findings show that in spite of the poor aggressiveness displayed by Caco-2 cells, their capacity to migrate towards Matrigel was greatly

facilitated when they were pre-incubated with BBS. This enhanced invasion was induced through GRP-R, as the number of invading cells under BBS drastically decreased by treatment with the specific antagonist RC-3940-II. Furthermore, the Cox-2 selective inhibitor NS-398 was also able to reduce strongly BBS-promoted cell invasion, suggesting that this enzyme is involved in Caco-2 cells invasiveness. A similar effect of BBS on migration was observed with HT-29 colon carcinoma cells. BBS treatment may enhance cell invasion/migration by different mechanisms, some of which could be mediated through its ability to induce NFAT-dependent transcriptional activation of Cox-2. Previous reports have shown that BBS acts as an invasion-promoting agent in prostate and colon cancer cell lines, although the precise molecular mechanism(s) by which BBS causes these effects are unknown. BBS was shown to stimulate tyrosine phosphorylation of several focal adhesion proteins which mediate colon cancer cell motility (Aprikian *et al.*, 1997; Rozengurt *et al.*, 2002; Glover *et al.*, 2005). BBS also enhances invasion of Isrecol colon carcinoma cells through unidentified effector proteins downstream the Rho signaling pathway (Saurin *et al.*, 2002). Moreover, BBS has been proved to induce the expression and activation of the extracellular matrix proteinases urokinase-type plasminogen activator and metalloproteinase-9, as well as the proangiogenic factors interleukin-8 and vascular endothelial growth factor, linked to increased metastatic

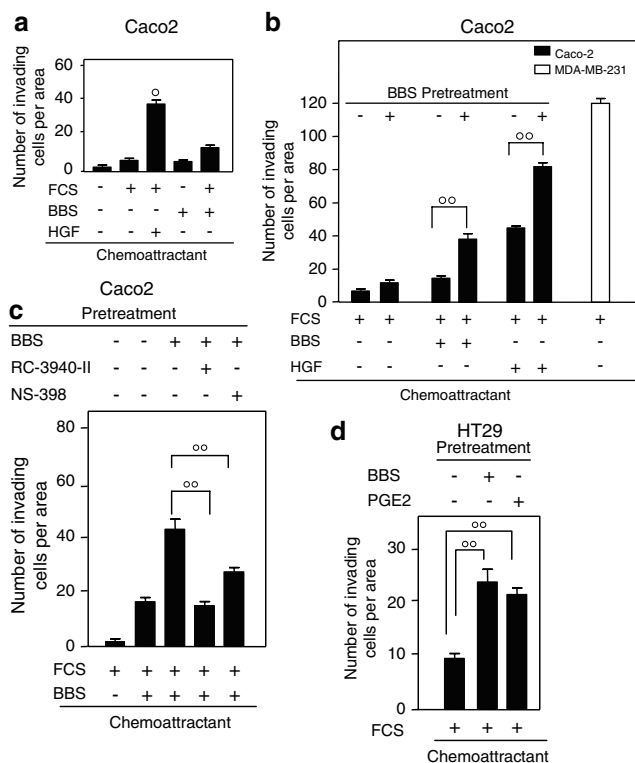


Figure 7 Effect of BBS on invasiveness of carcinoma cell lines. (a) Caco-2 cells (10^5) were serum-starved for 72 h and seeded in the upper compartment, whereas in the lower chamber there was DMEM supplemented with chemoattractants: 20% FCS with or without 100 ng/ml HGF and 100 nM BBS where indicated. (b) Caco-2 cells were serum-starved as above but in the presence or absence of 100 nM BBS as indicated. In the lower chamber, there was DMEM supplemented with 20% FCS plus, 100 ng/ml HGF or 100 nM BBS, where indicated. The MDA-MB-231 cell line was used as positive control in the invasion assay. (c) Caco-2 cells were serum-starved as above in the presence or absence of 100 nM BBS, with or without the addition of 10 nM RC-3940-II or 10 μ M NS-398. In the lower chamber, there was DMEM supplemented with 20% FCS and 100 nM BBS, where indicated. (d) HT-29 cell were serum-starved and pre-incubated with 100 nM BBS or 1 μ M PGE₂. In the lower chamber, there was DMEM supplemented with 20% FCS. After 3 days of culture, cells that passed across the membrane were fixed, stained and counted. Data represent the number (mean \pm s.e. of four independent experiments, each performed in duplicate) of invading or migrating cells. Area corresponds to the surface occupied by the ocular grid at $\times 400$ magnification. $\circ P < 0.05$ and $\circ\circ P < 0.01$.

potential in prostate cancer cells (Festuccia *et al.*, 1998, 2002; Levine *et al.*, 2003). In addition, our results show the involvement of NFAT-mediated induction of genes implicated in tumor progression such as Cox-2 in the pro-tumoral effects of BBS. NFAT has been involved in promoting breast and colon carcinoma motility and invasion through Matrigel, mediating integrin-dependent events (Jauliac *et al.*, 2002; Chen and O'Connor, 2005). In a recent report, Yiu and Toker (2006) have shown in breast cancer cells that increased expression and activity of NFAT-induced Cox-2 expression and PGE₂ production, resulting in increased invasion that was reduced by inhibiting Cox-2 expression or activity (Yiu and Toker, 2006). Multiple evidences support the

involvement of Cox-2-derived PGs in tumor progression by their ability to enhance migration and invasion of carcinoma cells. Cox-2 expression in colon or breast cancer cell lines increases the expression of enzymes capable of digesting the basal membrane presumably contributing to the observed increased ability to invade through a layer of Matrigel (Tsuji *et al.*, 1997). These effects are related to PG-mediated upregulation of metalloproteinases, β -catenin and diverse growth factors receptors (Tsuji *et al.*, 1997; Pai *et al.*, 2003; Singh *et al.*, 2005). Nevertheless, it remains to be elucidated what is the contribution of NFAT/Cox-2 to the previously described events occurring upon BBS treatment in carcinoma cells. In agreement to our data showing inhibition of BBS-mediated enhanced invasion of Caco-2 cells by NS398, Iishi *et al.* (2003) reported that Nimesulide, a Cox-2 inhibitor, was able to suppress BBS-enhanced MMP-9 activity and peritoneal metastasis of intestinal adenocarcinomas in rats.

Based on our findings, we postulate that BBS-mediated cell growth, invasiveness and tumor progression in human colon cancer depend on the activation of the Ca²⁺/Cn/NFAT signaling pathway that leads to an upregulation of genes involved in the tumoral phenotype such as Cox-2. Identifying changes in the gene expression pattern upon BBS treatment of colon carcinoma cells may further contribute to our understanding of the pathogenesis of colorectal carcinoma.

Materials and methods

Reagents

BBS, PMA and A23187 calcium Ion were purchased from Sigma. The Random Primers DNA Labelling System kit, Optimum essential medium (MEM) and Lipofectamine were obtained from Invitrogen (Carlsbad, CA, USA). enhanced chemiluminescence system was purchased from Amersham Pharmacia (Buckinghamshire, England). BCA Protein Assay reagent and Restore Western Blot Stripping buffer were obtained from Pierce (Rockford, IL, USA). The Luciferase Assay System and lysis buffer were purchased from Promega (Madison, WI, USA). Anti-Cox-2 antibody and the Cox-2 inhibitor NS398 were obtained from Alexis (San Diego, CA, USA). Anti-human β -actin and horseradish peroxidase-conjugated antibodies were purchased from Santa Cruz (Santa Cruz, CA, USA), whereas anti-NFATc1 antibody was described previously (Iniguez *et al.*, 2000). PGE₂ and the enzyme-linked immunosorbent assay (ELISA) kit for the determination of PGE₂ were obtained from Cayman. Fura-2/AM was purchased from Molecular Probes (Carlsbad, CA, USA). Trizol was obtained from Invitrogen. Nylon membranes were purchased from Schleicher and Schuell (Brentford, UK). CsA was obtained from Sandoz (Holzkirchen, Germany). Specific BBS antagonist (RC-3940-II) was kindly provided by Andrew Schally (Tulane University, New Orleans).

Cell culture

The Caco-2 human intestinal cell line was obtained from the American Type Culture Collection. Cells were cultured using MEM supplemented with 20% FCS for Caco-2 or 10% FCS for HT29, 100 U/ml penicillin, 100 μ g/ml streptomycin, 1 mM

sodium pyruvate, 2 mM L-glutamine and 1% non-essential amino acids at 37°C in a 5% CO₂ atmosphere. Cells were used between passages 15 and 45.

Intracellular calcium measurements

Agonist-induced changes in [Ca²⁺]_i were detected using the Ca²⁺-sensitive dye Fura-2/AM as described by Hellmich *et al.* (1999). Briefly, cell monolayers at 80% confluence were trypsinized, washed and then loaded with 1 μM Fura-2/AM under continuous stirring for 30 min at 37°C. The cells (2 × 10⁶/ml) were treated with 100 nM BBS or 10 nM RC-3940-II, and placed in an Aminco Bowman Series 2 spectrofluorometer (Thermo). The fluorescence signal of Fura-2 was recorded, with excitation and emission at 340 and 510 nm, respectively.

RNA isolation and Northern blot analysis

Total RNA was extracted from Caco-2 cells by using Trizol reagent according to the manufacturer's instructions. RNA samples (20 μg/lane) were separated on formaldehyde-agarose gels and blotted onto nylon membranes. The blots were hybridized with Cox-2 DNA probe labeled with [α-³²P]dCTP by random primer extension. After overnight hybridization at 65°C and thorough washing, the blots were exposed to X-ray film for autoradiography as described (Hernandez *et al.*, 2001). To ensure RNA integrity and to confirm equal loading among lanes, the filters were stripped and rehybridized with a probe for glyceraldehyde 3-phosphate dehydrogenase (GAPDH). Densitometric analysis was performed using NIH Image 1.62 software to quantify the results.

PGE₂ measurements

Cells were maintained for 12 h in culture medium supplemented with 0.5% FCS, then pretreated or not with 200 ng/ml CsA or 1 μM NS398 for 2 h, and further stimulated with 100 nM BBS for the indicated times. Media supernatants were collected and analysed for PGE₂ by ELISA (Hernandez *et al.*, 2001).

Immunoblot analysis

Immunoblotting was carried out as described elsewhere (Iniguez *et al.*, 2000). Cells were disrupted and solubilized extracts (20 μg) were separated in 6% (only for analysis of NFAT translocation to the nucleus) or 10% sodium dodecyl sulfate-polyacrylamide gels, and transferred to nitrocellulose filters. After blocking for 2 h with 5% non-fat dried milk in Tris-buffered saline containing 0.1% Tween-20, the membranes were probed 2 h at 37°C with murine monoclonal antibody against Cox-2 (diluted 1:1000 in blocking buffer), polyclonal goat anti-human β actin antibody (1:1000), or polyclonal goat anti-human NFATc1 antibody (1:2000). The filters were washed and incubated with the corresponding secondary antibody linked to horseradish peroxidase at 1:10,000 dilution, and the stained bands were visualized by a chemiluminescent peroxide substrate.

Plasmid constructs

Human Cox-2 promoter constructs spanning from -1796 (P2-1900-LUC), -521 (P2-625-LUC), -327 (P2-431-LUC), -170 (P2-274-LUC), -88 (P2-192-LUC) and -46 (P2-150-LUC) to +104 bp relative to the transcription start site of the human Cox-2 gene and the P2-274-LUC plasmid with binding sites for NFAT, or AP-1, or both mutated were described (Iniguez *et al.*, 2000). The reporter construct NFAT-LUC contains three tandem copies of the NFAT binding site fused to the IL-2 minimal promoter. The EF-BOS-NFAT1 plasmid contains

the cDNA encoding murine NFATc2, modified to encode an influenza HA peptide at the N-terminus of the expressed protein (Luo *et al.*, 1996). The pSH102Δ418 expression vector (a kind gift from Gerald Crabtree, Stanford University, Stanford, CT, USA) derives from pBJ5 and encodes an NFATc1 deletion mutant (1-418) that functions as a dominant negative for all NFAT isoforms (Northrop *et al.*, 1994).

Transfection and luciferase assays

Caco-2 cells were transfected by Lipofectamine as described (Iniguez *et al.*, 2000). Briefly, exponential growing cells (1.25 × 10⁵/well) cultured in 24-well plates were incubated for 3 h at 37°C with a mixture of 0.5-1 μg of the corresponding reporter plasmid and Lipofectamine-containing Opti-MEM. In co-transfection experiments, 0.15-1.5 μg of the corresponding expression plasmid was included. The total amount of DNA in each transfection was kept constant by using the empty expression vectors. Complete medium was then added to cells and incubated at 37°C for additional 16 h. Transfected cells were exposed to different stimuli as indicated. Then, cells were harvested and lysed. Luciferase activity was determined by using a luciferase assay system with a luminometer Monolight 2010 (Analytical Luminescence Laboratory). Transfection experiments were performed in triplicate. Data of luciferase activity are presented as fold induction (observed experimental relative luciferase units (RLU)/basal RLU in absence of any stimulus). Results were normalized for extract protein concentrations measured with a Bradford assay kit.

Electrophoretic mobility shift assay

Nuclear extracts were prepared from Caco-2 cells as described (Martinez-Martinez *et al.*, 1997) with minor modifications. In brief, 5 μg of nuclear protein was incubated with 1 μg of poly(dI-dC) DNA carrier in DNA binding buffer (10% (wt/vol) polyvinylethanol, 12.5% (vol/vol) glycerol, 50 mM Tris, pH 8, 2.5 mM dithiothreitol, 2.5 mM ethylenediaminetetraacetic acid) for 30 min at 4°C. Then, 10⁵ counts per minute (c.p.m.) (10⁸ c.p.m./μg) of the ³²P-labeled double-stranded oligonucleotide (2 μg) were added, and the reaction was incubated at room temperature for 30 min. For competition experiments, a 50-fold molar excess of unlabeled oligonucleotide was added before the addition of the probe. Supershift assays were performed by incubating nuclear extracts with either preimmune serum or anti-NFATc1 antibody for 15 min at 4°C before the addition of the probe. DNA-protein complexes were resolved by electrophoresis in 4% non-denaturing polyacrylamide gels and were subjected to autoradiography.

The following synthetic oligonucleotides (5'-3') were used as probes/competitors in EMSAs (factor binding sites are underlined): tcgaCAAGGGGAGAGGGGAAAAATTTGTG GC (nucleotides -117 to -91 containing the putative dNFAT site of the human Cox-2 promoter); and tcgaCAAAAGGCG GAAAGAAACAGTCATTTTC (nucleotides -82 to -58 containing the putative AP-1-pNFAT site of the human Cox-2 promoter).

In vitro cell migration and invasion assays

Invasion and migration assays were carried out in Transwell filter chambers coated or not with Matrigel (Corning-Costar, Cambridge, MA, USA) (Albini *et al.*, 1987). Caco-2 cells were preincubated in FCS-free DMEM with 0.1% bovine serum albumin, in the presence or absence of 100 nM BBS, with or without the addition of BBS-R antagonist RC-3940-II (10 nM) or Cox-2 inhibitor NS-398 (10 μM), and then seeded (1 × 10⁵) in the upper chamber equipped with a 12 μm Matrigel-coated

polycarbonate membrane. The culture medium was changed daily along 3 days. DMEM supplemented with 20% FCS was introduced into the lower compartment with or without recombinant human HGF (R&D Systems, Minneapolis, MN, USA) at 100 ng/ml, and with or without 100 nM BBS. To analyse the mechanisms associated with cell invasiveness, we used chemoattractants diluted in FCS-supplemented medium, as described by Kermorgant *et al.* (2001). In the lower chamber there was DMEM supplemented with 20% FCS. After 72 h of culture, the non-migratory cells on the upper surface of the filter were mechanically removed by scraping and the membranes fixed and stained with Diff-Quick (Baxter Scientific Products, McGraw Park, IL, USA). Cell migration was microscopically quantified by counting cells on the bottom surface of the filter at $\times 400$ magnification, using a calibrated ocular grid, in 16 representative areas per well. Experiments were carried out in duplicate and several independent sets of experiments for each type of migration assay were performed.

In the case of HT-29 only migration assays were carried out as above, but in absence of matrigel in a $8\ \mu\text{m}$ pore size Polycarbonate Membrane Transwell Inserts (Corning-Costar, Cambridge, MA, USA). HT-29 cells were serum-starved and pre-incubated with 100 nM BBS or $1\ \mu\text{M}$ PGE₂. Cell migration was microscopically quantified by counting cells on the bottom surface of the filter, analysing captured images at $\times 10$

magnification with the ImageJ v1.36b Software (Wayne Rasband, NIH, Bethesda, MD, USA).

Statistical analysis

Statistical analysis was performed by using GraphPad InStat 3.05 software. Comparisons between groups were made by using the one-way analysis of variance test. A difference between groups of $P < 0.05$ was considered significant.

Acknowledgements

We are grateful to those who have helped us with different reagents. We also thank María Chorro, María Cazorla and Carmen Punzón for their excellent technical assistance and to Gloria Escribano for secretarial assistance. This work was supported by grants from the Ministerio de Educación y Ciencia-FEDER (BMC2001-0177), (SAF 2004-05109), (BFU2004-04157) and SAB 2001-0050; RECAVA cardiovascular network (C03/01) and RIS (G03/173) from Fondo de Investigaciones Sanitarias; Laboratorios del Dr ESTEVE; Comunidad de Madrid (08.3/0007/1) and Fundación Ramón Areces. This research was also supported by ECFP6 funding; EICOSANOX integrated project (LSH-CT-2004-005033); and MAIN network of excellence. The Commission is not liable for any use that may be made of information herein. RSC is a Member of Research Career from CONICET, Argentina.

References

- Albini A, Iwamoto Y, Kleinman HK, Martin GR, Aaronson SA, Kozlowski JM *et al.* (1987). A rapid *in vitro* assay for quantitating the invasive potential of tumor cells. *Cancer Res* **47**: 3239–3245.
- Aprikian AG, Tremblay L, Han K, Chevalier S. (1997). Bombesin stimulates the motility of human prostate-carcinoma cells through tyrosine phosphorylation of focal adhesion kinase and of integrin-associated proteins. *Int J Cancer* **72**: 498–504.
- Boss V, Talpade DJ, Murphy TJ. (1996). Induction of NFAT-mediated transcription by Gq-coupled receptors in lymphoid and non-lymphoid cells. *J Biol Chem* **271**: 10429–10432.
- Bresalier RS, Sandler RS, Quan H, Bolognese JA, Oxenius B, Horgan K *et al.* (2005). Cardiovascular events associated with rofecoxib in a colorectal adenoma chemoprevention trial. *N Engl J Med* **352**: 1092–1102.
- Cai RZ, Reile H, Armatis P, Schally AV. (1994). Potent bombesin antagonists with C-terminal Leu-psi(CH₂-N)-Tac-NH₂ or its derivatives. *Proc Natl Acad Sci USA* **91**: 12664–12668.
- Carroll RE, Matkowskyj KA, Chakrabarti S, McDonald TJ, Benya RV. (1999). Aberrant expression of gastrin-releasing peptide and its receptor by well-differentiated colon cancers in humans. *Am J Physiol* **276**: G655–G665.
- Carroll RE, Ostrovskiy D, Lee S, Danilkovich A, Benya RV. (2000). Characterization of gastrin-releasing peptide and its receptor aberrantly expressed by human colon cancer cell lines. *Mol Pharmacol* **58**: 601–607.
- Cuttitta F, Carney DN, Mulshine J, Moody TW, Fedorko J, Fischler A *et al.* (1985). Bombesin-like peptides can function as autocrine growth factors in human small-cell lung cancer. *Nature* **316**: 823–826.
- Chan TA. (2002). Nonsteroidal anti-inflammatory drugs, apoptosis, and colon-cancer chemoprevention. *Lancet Oncol* **3**: 166–174.
- Chen M, O'Connor KL. (2005). Integrin alpha6beta4 promotes expression of autotaxin/ENPP2 autocrine motility factor in breast carcinoma cells. *Oncogene* **24**: 5125–5130.
- Cheng HF, Harris RC. (2002). Cyclooxygenase-2 expression in cultured cortical thick ascending limb of Henle increases in response to decreased extracellular ionic content by both transcriptional and post-transcriptional mechanisms. Role of p38-mediated pathways. *J Biol Chem* **277**: 45638–45643.
- Dixon DA. (2004). Dysregulated post-transcriptional control of COX-2 gene expression in cancer. *Curr Pharm Des* **10**: 635–646.
- Duque J, Fresno M, Iniguez MA. (2005). Expression and function of the nuclear factor of activated T cells in colon carcinoma cells: involvement in the regulation of cyclooxygenase-2. *J Biol Chem* **280**: 8686–8693.
- Engle MJ, Goetz GS, Alpers DH. (1998). Caco-2 cells express a combination of colonocyte and enterocyte phenotypes. *J Cell Physiol* **174**: 362–369.
- Fenwick SW, Toogood GJ, Lodge JP, Hull MA. (2003). The effect of the selective cyclooxygenase-2 inhibitor rofecoxib on human colorectal cancer liver metastases. *Gastroenterology* **125**: 716–729.
- Festuccia C, Angelucci A, Gravina G, Eleuterio E, Vicentini C, Bologna M. (2002). Bombesin-dependent pro-MMP-9 activation in prostatic cancer cells requires beta1 integrin engagement. *Exp Cell Res* **280**: 1–11.
- Festuccia C, Guerra F, D'Ascenzo S, Giunciuglio D, Albini A, Bologna M. (1998). *In vitro* regulation of pericellular proteolysis in prostatic tumor cells treated with bombesin. *Int J Cancer* **75**: 418–431.
- Glover S, Nathaniel R, Shakir L, Perrault C, Anderson RK, Tran-Son-Tay R *et al.* (2005). Transient upregulation of GRP and its receptor critically regulate colon cancer cell motility during remodeling. *Am J Physiol Gastrointest Liver Physiol* **288**: G1274–G1282.

- Guo YS, Hellmich MR, Wen XD, Townsend Jr CM. (2001). Activator protein-1 transcription factor mediates bombesin-stimulated cyclooxygenase-2 expression in intestinal epithelial cells. *J Biol Chem* **276**: 22941–22947.
- Gupta RA, Dubois RN. (2001). Colorectal cancer prevention and treatment by inhibition of cyclooxygenase-2. *Nat Rev Cancer* **1**: 11–21.
- Hecht JR, Duque J, Reddy ST, Herschman HR, Walsh JH, Slice LW. (1997). Gastrin-releasing peptide-induced expression of prostaglandin synthase-2 in Swiss 3T3 cells. *Prostaglandins* **54**: 757–768.
- Hellmich MR, Ives KL, Udipi V, Soloff MS, Greeley Jr GH, Christensen BN *et al*. (1999). Multiple protein kinase pathways are involved in gastrin-releasing peptide receptor-regulated secretion. *J Biol Chem* **274**: 23901–23909.
- Hernandez GL, Volpert OV, Iniguez MA, Lorenzo E, Martinez-Martinez S, Grau R *et al*. (2001). Selective inhibition of vascular endothelial growth factor-mediated angiogenesis by cyclosporin A: roles of the nuclear factor of activated T cells and cyclooxygenase 2. *J Exp Med* **193**: 607–620.
- Hogan PG, Chen L, Nardone J, Rao A. (2003). Transcriptional regulation by calcium, calcineurin, and NFAT. *Genes Dev* **17**: 2205–2232.
- Holzmann K, Kohlhammer H, Schwaenen C, Wessendorf S, Kestler HA, Schworer A *et al*. (2004). Genomic DNA-chip hybridization reveals a higher incidence of genomic amplifications in pancreatic cancer than conventional comparative genomic hybridization and leads to the identification of novel candidate genes. *Cancer Res* **64**: 4428–4433.
- Horsley V, Pavlath GK. (2002). NFAT: ubiquitous regulator of cell differentiation and adaptation. *J Cell Biol* **156**: 771–774.
- Iishi H, Tatsuta M, Baba M, Yano H, Higashino K, Mukai M *et al*. (2003). Suppression by nimesulide of bombesin-enhanced peritoneal metastasis of intestinal adenocarcinomas induced by azoxymethane in Wistar rats. *Clin Exp Metast* **20**: 555–560.
- Iniguez MA, Martinez-Martinez S, Punzon C, Redondo JM, Fresno M. (2000). An essential role of the nuclear factor of activated T cells in the regulation of the expression of the cyclooxygenase-2 gene in human T lymphocytes. *J Biol Chem* **275**: 23627–23635.
- Iniguez MA, Rodriguez A, Volpert OV, Fresno M, Redondo JM. (2003). Cyclooxygenase-2: a therapeutic target in angiogenesis. *Trends Mol Med* **9**: 73–78.
- Inoue H, Taba Y, Miwa Y, Yokota C, Miyagi M, Sasaguri T. (2002). Transcriptional and posttranscriptional regulation of cyclooxygenase-2 expression by fluid shear stress in vascular endothelial cells. *Arterioscler Thromb Vasc Biol* **22**: 1415–1420.
- Jauliac S, Lopez-Rodriguez C, Shaw LM, Brown LF, Rao A, Toker A. (2002). The role of NFAT transcription factors in integrin-mediated carcinoma invasion. *Nat Cell Biol* **4**: 540–544.
- Jensen JA, Carroll RE, Benya RV. (2001). The case for gastrin-releasing peptide acting as a morphogen when it and its receptor are aberrantly expressed in cancer. *Peptides* **22**: 689–699.
- Kanashiro CA, Schally AV, Groot K, Armatis P, Bernardino AL, Varga JL. (2003). Inhibition of mutant p53 expression and growth of DMS-153 small cell lung carcinoma by antagonists of growth hormone-releasing hormone and bombesin. *Proc Natl Acad Sci USA* **100**: 15836–15841.
- Kawai N, Tsujii M, Tsuji S. (2002). Cyclooxygenases and colon cancer. *Prostaglandins Other Lipid Mediat* **68–69**: 187–196.
- Kermorgant S, Aparicio T, Dessirier V, Lewin MJ, Lehy T. (2001). Hepatocyte growth factor induces colonic cancer cell invasiveness via enhanced motility and protease overproduction. Evidence for PI3 kinase and PKC involvement. *Carcinogenesis* **22**: 1035–1042.
- Lara-Pezzi E, Gomez-Gaviro MV, Galvez BG, Mira E, Iniguez MA, Fresno M *et al*. (2002). The hepatitis B virus X protein promotes tumor cell invasion by inducing membrane-type matrix metalloproteinase-1 and cyclooxygenase-2 expression. *J Clin Invest* **110**: 1831–1838.
- Levine L, Lucci III JA, Pazdrak B, Cheng JZ, Guo YS, Townsend Jr CM *et al*. (2003). Bombesin stimulates nuclear factor kappa B activation and expression of proangiogenic factors in prostate cancer cells. *Cancer Res* **63**: 3495–3502.
- Liu W, Reinmuth N, Stoeltzing O, Parikh AA, Tellez C, Williams S *et al*. (2003). Cyclooxygenase-2 is up-regulated by interleukin-1 beta in human colorectal cancer cells via multiple signaling pathways. *Cancer Res* **63**: 3632–3636.
- Liu Z, Dronadula N, Rao GN. (2004). A novel role for nuclear factor of activated T cells in receptor tyrosine kinase and G protein-coupled receptor agonist-induced vascular smooth muscle cell motility. *J Biol Chem* **279**: 41218–41226.
- Luo C, Shaw KT, Raghavan A, Aramburu J, Garcia-Cozar F, Perrino BA *et al*. (1996). Interaction of calcineurin with a domain of the transcription factor NFAT1 that controls nuclear import. *Proc Natl Acad Sci USA* **93**: 8907–8912.
- Martinez-Martinez S, Gomez del Arco P, Armesilla AL, Aramburu J, Luo C, Rao A *et al*. (1997). Blockade of T-cell activation by dithiocarbamates involves novel mechanisms of inhibition of nuclear factor of activated T cells. *Mol Cell Biol* **17**: 6437–6447.
- Munoz-Najar UM, Neurath KM, Vumbaca F, Claffey KP. (2006). Hypoxia stimulates breast carcinoma cell invasion through MT1-MMP and MMP-2 activation. *Oncogene* **25**: 2379–2392.
- Neal JW, Clipstone NA. (2003). A constitutively active NFATc1 mutant induces a transformed phenotype in 3T3-L1 fibroblasts. *J Biol Chem* **278**: 17246–17254.
- Northrop JP, Ho SN, Chen L, Thomas DJ, Timmerman LA, Nolan GP *et al*. (1994). NF-AT components define a family of transcription factors targeted in T-cell activation. *Nature* **369**: 497–502.
- Oshima M, Dinchuk JE, Kargman SL, Oshima H, Hancock B, Kwong E *et al*. (1996). Suppression of intestinal polyposis in Apc delta716 knockout mice by inhibition of cyclooxygenase 2 (COX-2). *Cell* **87**: 803–809.
- Pai R, Nakamura T, Moon WS, Tarnawski AS. (2003). Prostaglandins promote colon cancer cell invasion; signaling by cross-talk between two distinct growth factor receptors. *FASEB J* **17**: 1640–1647.
- Preston SR, Woodhouse LF, Jones-Blackett S, Miller GV, Primrose JN. (1995). High-affinity binding sites for gastrin-releasing peptide on human colorectal cancer tissue but not uninvolved mucosa. *Br J Cancer* **71**: 1087–1089.
- Ramsay RG, Ciznadija D, Vanevski M, Mantamadiotis T. (2003). Transcriptional regulation of cyclo-oxygenase expression: three pillars of control. *Int J Immunopathol Pharmacol* **16**: 59–67.
- Robida AM, Xu K, Ellington ML, Murphy TJ. (2000). Cyclosporin A selectively inhibits mitogen-induced cyclooxygenase-2 gene transcription in vascular smooth muscle cells. *Mol Pharmacol* **58**: 701–708.

- Rozengurt E, Guha S, Sinnett-Smith J. (2002). Gastrointestinal peptide signalling in health and disease. *Eur J Surg Suppl* **587**: 23–38.
- Ryan RR, Katsuno T, Mantey SA, Pradhan TK, Weber HC, Coy DH *et al*. (1999). Comparative pharmacology of the nonpeptide neuromedin B receptor antagonist PD 168368. *J Pharmacol Exp Ther* **290**: 1202–1211.
- Saurin JC, Fallavier M, Sordat B, Gevrey JC, Chayvialle JA, Abello J. (2002). Bombesin stimulates invasion and migration of Isreco1 colon carcinoma cells in a Rho-dependent manner. *Cancer Res* **62**: 4829–4835.
- Saurin JC, Nemoz-Gaillard E, Sordat B, Cuber JC, Coy DH, Abello J *et al* (1999). Bombesin stimulates adhesion, spreading, lamellipodia formation, and proliferation in the human colon carcinoma Isreco1 cell line. *Cancer Res* **59**: 962–967.
- Shao J, Evers BM, Sheng H. (2004). Prostaglandin E2 synergistically enhances receptor tyrosine kinase-dependent signaling system in colon cancer cells. *J Biol Chem* **279**: 14287–14293.
- Shao J, Sheng H, Inoue H, Morrow JD, DuBois RN. (2000). Regulation of constitutive cyclooxygenase-2 expression in colon carcinoma cells. *J Biol Chem* **275**: 33951–33956.
- Singh B, Berry JA, Shoher A, Ramakrishnan V, Lucci A. (2005). COX-2 overexpression increases motility and invasion of breast cancer cells. *Int J Oncol* **26**: 1393–1399.
- Smith WL, DeWitt DL, Garavito RM. (2000). Cyclooxygenases: structural, cellular, and molecular biology. *Annu Rev Biochem* **69**: 145–182.
- Sun Y, Sinicrope FA. (2005). Selective inhibitors of MEK1/ERK44/42 and p38 mitogen-activated protein kinases potentiate apoptosis induction by sulindac sulfide in human colon carcinoma cells. *Mol Cancer Ther* **4**: 51–59.
- Tsujii M, Kawano S, DuBois RN. (1997). Cyclooxygenase-2 expression in human colon cancer cells increases metastatic potential. *Proc Natl Acad Sci USA* **94**: 3336–3340.
- Williams CS, Luongo C, Radhika A, Zhang T, Lamps LW, Nanney LB *et al*. (1996). Elevated cyclooxygenase-2 levels in Min mouse adenomas. *Gastroenterology* **111**: 1134–1140.
- Yegen BC. (2003). Bombesin-like peptides: candidates as diagnostic and therapeutic tools. *Curr Pharm Des* **9**: 1013–1022.
- Yiu GK, Toker A. (2006). NFAT induces breast cancer cell invasion by promoting the induction of cyclooxygenase-2. *J Biol Chem* **281**: 12210–12217.