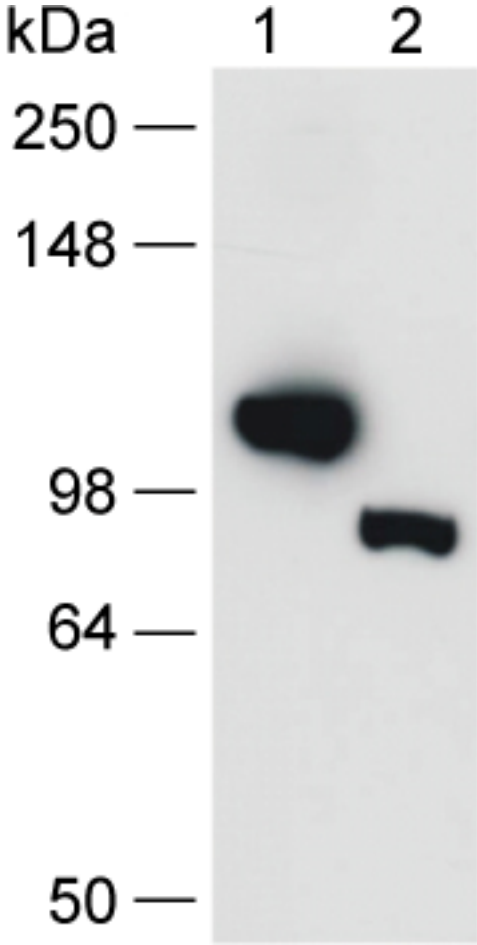


**Supplementary Figure 1**



**Detection of PAC $\alpha$  and PAC $\beta$  in oocytes.**

Western blot of proteins from oocytes, injected with 20 ng cRNA coding for c-myc-tagged PAC $\alpha$  or PAC $\beta$ . Protein was detected with a mouse monoclonal antibody against c-myc. Protein corresponding to roughly one oocyte was loaded per lane.