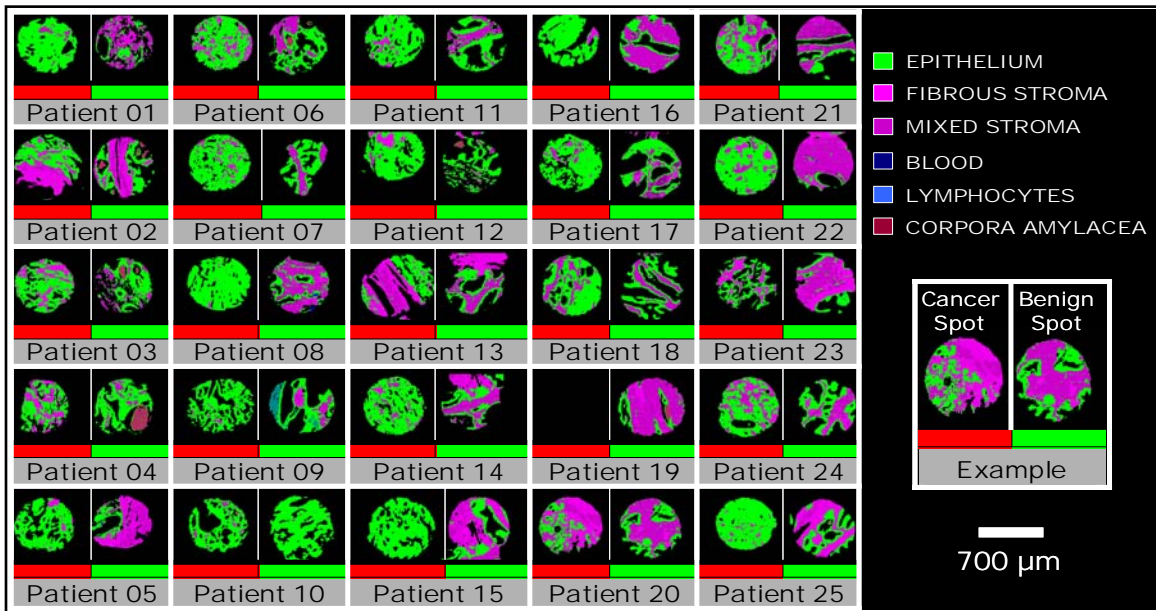
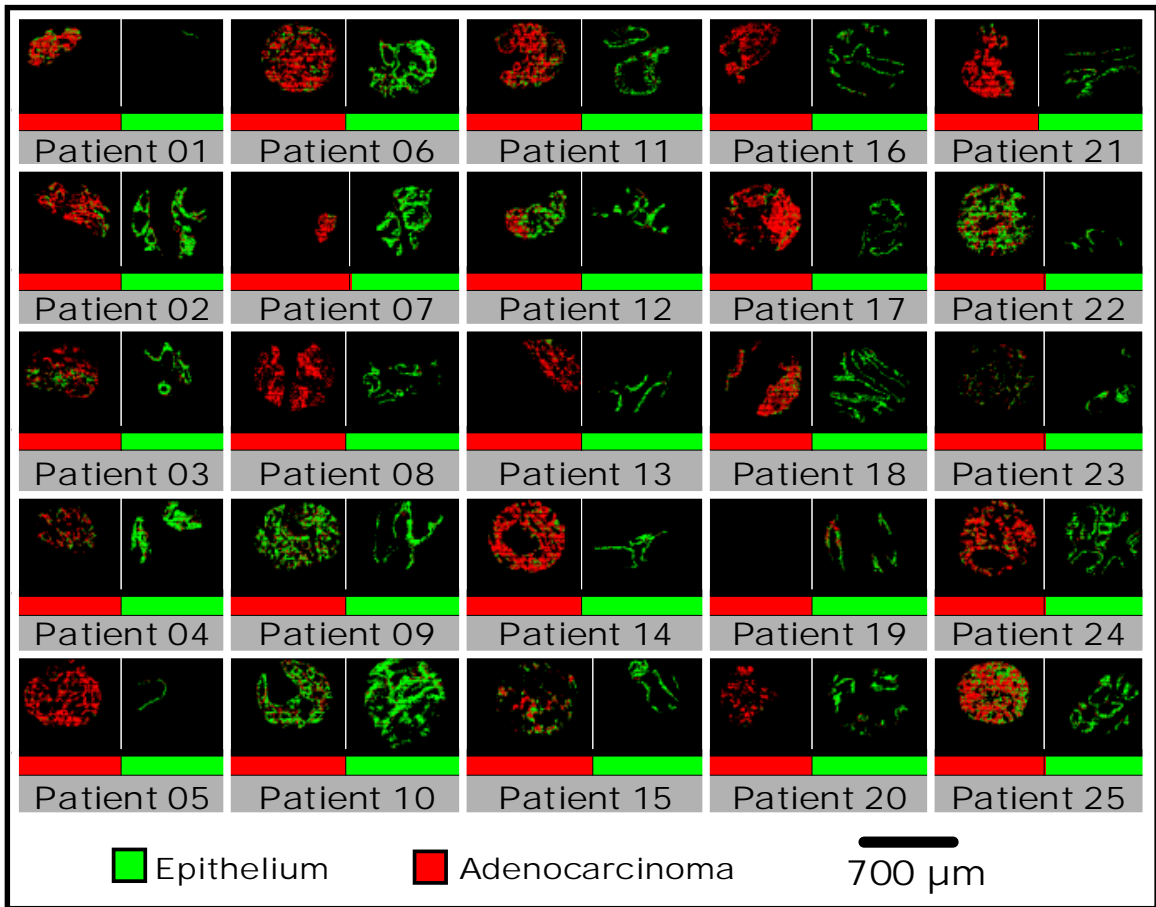


Supplementary figure 2A. Hematoxylin and Eosin stained 25 patient array with carcinoma spots, indicated by red bars below the figure, and their patient matched benign spots, indicated by green bars, employed to obtain spectral biomarkers of carcinoma.



Supplementary figure 2B. Spectroscopically imaged and classified 25 patient unstained array with carcinoma spots, indicated by red bars below the figure, and their patient matched benign spots, indicated by green bars, employed to obtain spectral biomarkers of carcinoma.



Supplementary figure 2C. 25 patient unstained array with the epithelial pixels isolated and classified as benign epithelium (green) or adenocarcinoma (red) for each sample.