

The ancestry and affiliations of Kennewick Man

Morten Rasmussen^{1,2}, Martin Sikora^{1*}, Anders Albrechtsen^{3*}, Thorfinn Sand Korneliussen^{1*}, J. Victor Moreno-Mayar^{1*}, G. David Poznik⁴, Christoph P. E. Zollikofer⁵, Marcia S. Ponce de León⁵, Morten E. Allentoft¹, Ida Moltke³, Hákon Jónsson¹, Cristina Valdiosera^{1,6}, Ripan S. Malhi⁷, Ludovic Orlando¹, Carlos D. Bustamante^{2,8}, Thomas W. Stafford Jr^{1,9}, David J. Meltzer¹⁰, Rasmus Nielsen^{1,11} & Eske Willerslev¹

Kennewick Man, referred to as the Ancient One by Native Americans, is a male human skeleton discovered in Washington state (USA) in 1996 and initially radiocarbon dated to 8,340–9,200 calibrated years before present (BP)¹. His population affinities have been the subject of scientific debate and legal controversy. Based on an initial study of cranial morphology it was asserted that Kennewick Man was neither Native American nor closely related to the claimant Plateau tribes of the Pacific Northwest, who claimed ancestral relationship and requested repatriation under the Native American Graves Protection and Repatriation Act (NAGPRA). The morphological analysis was important to judicial decisions that Kennewick Man was not Native American and that therefore NAGPRA did not apply. Instead of repatriation, additional studies of the remains were permitted². Subsequent craniometric analysis affirmed Kennewick Man to be more closely related to circumpacific groups such as the Ainu and Polynesians than he is to modern Native Americans². In order to resolve Kennewick Man's ancestry and affiliations, we have sequenced his genome to ~1× coverage and compared it to worldwide genomic data including for the Ainu and Polynesians. We find that Kennewick Man is closer to modern Native Americans than to any other population worldwide. Among the Native American groups for whom genome-wide data are available for comparison, several seem to be descended from a population closely related to that of Kennewick Man, including the Confederated Tribes of the Colville Reservation (Colville), one of the five tribes claiming Kennewick Man. We revisit the cranial analyses and find that, as opposed to genome-wide comparisons, it is not possible on that basis to affiliate Kennewick Man to specific contemporary groups. We therefore conclude based on genetic comparisons that Kennewick Man shows continuity with Native North Americans over at least the last eight millennia.

The skeleton of Kennewick Man was inadvertently discovered in July of 1996 in shallow water along the Columbia River shoreline outside Kennewick, Washington state, USA. On several visits to the locality over the following month, some 300 bone elements and fragments were collected, ultimately comprising ~90% of an adult male human skeleton³. The initial assessment of this individual was that he was a historic-period Euro-American, based largely on his apparently “Caucasoid-like”³ cranium, along with a few artefacts found nearby (later proved not to be associated with the skeletal remains). However, radiocarbon dating subsequently put the age of the skeleton in the Early Holocene¹. The claim that Kennewick Man was anatomically distinct from modern Native Americans in general, and in particular from those tribes inhabiting northwest North America⁴, sparked a legal battle over the disposition of the skeletal remains. Five tribes who inhabit that

region requested the remains be returned to them for reburial under the Native American Graves Protection and Repatriation Act (NAGPRA). The US Army Corps of Engineers, which manages the land where Kennewick Man was found, announced their intent to do so. That in turn prompted a lawsuit to block the repatriation^{2,5}, and generated considerable scientific controversy as to Kennewick Man's ancestry and affinities (for example, refs 3, 6–9). The lawsuit ultimately (in 2004) resulted in a judicial ruling in favour of a detailed study of the skeletal remains, the results of which were recently published².

These studies provide important details on, for example, Kennewick Man's life history, refine his antiquity to 8,358 ± 21 ¹⁴C years BP or to within a two sigma range of 8,400–8,690 calibrated years BP (based on 90% marine diet, and 750 year marine reservoir correction), and demonstrate that the body had been intentionally buried and had eroded out shortly before discovery². They also include anatomical and morphometric analyses, which confirm earlier studies that Kennewick Man resembles circumpacific populations, particularly the Ainu and Polynesians^{2,10}; that he has certain “European-like morphological” traits²; and that he is anatomically distinct from modern Native Americans². These results are interpreted as indicating that Kennewick Man was a descendant of a population that migrated earlier than, and independently of, the population(s) that gave rise to modern Native Americans².

However, those recent studies did not include DNA analysis. Herein we present the genome sequence of Kennewick Man in order to resolve his ancestry and affinities with modern Native Americans. There were several prior efforts to recover genetic material from Kennewick Man¹¹, but none were successful.

We obtained ~1 × coverage of the genome, from 200 mg of metacarpal bone specimen (Supplementary Information 1) using previously published methods^{12,13}. The endogenous DNA content was between 0.4% and 1.4% for double-stranded and single-stranded libraries, respectively (Supplementary Information 2). Average fragment length was 53.6 base pairs (bp) and the sample exhibited damage patterns typical of ancient DNA, with excessive deamination of cytosine towards the ends of the fragments (Supplementary Information 2). Similarly, patterns of DNA decay agree with published expectations¹⁴, and display an estimated molecular half-life corresponding to 3,670 years for 100-bp molecules (Supplementary Information 3). The mitochondrial genome was sequenced to ~71 × coverage and is placed at the root of haplogroup X2a (Extended Data Fig. 1 and Supplementary Information 2), and the Y-chromosome haplogroup is Q-M3 (Extended Data Fig. 2 and Supplementary Information 5); both uniparental lineages are found almost exclusively among contemporary Native Americans^{15,16}. We used the X chromosome to

¹Centre for GeoGenetics, Natural History Museum of Denmark, University of Copenhagen, Øster Voldgade 5-7, DK-1350 Copenhagen K, Denmark. ²Department of Genetics, School of Medicine, Stanford University, Littlefield Center, Stanford, California 94305, USA. ³The Bioinformatics Centre, Department of Biology, University of Copenhagen, Ole Maaloes Vej 5, DK-2200 Copenhagen N, Denmark.

⁴Program in Biomedical Informatics, Stanford University, Stanford, California 94305, USA. ⁵Anthropological Institute, University of Zurich, Winterthurerstrasse 190, CH-8057 Zurich, Switzerland.

⁶Department of Archaeology and History, La Trobe University, Melbourne, Victoria 3086, Australia. ⁷Department of Anthropology and Carl R. Woese Institute for Genomic Biology, University of Illinois Urbana-Champaign, 209F Davenport Hall, 607 Matthews Avenue, Urbana, Illinois 61801, USA. ⁸Center for Evolutionary and Human Genomics, Stanford University, Littlefield Center, Stanford, California 94305, USA. ⁹AMS, ¹⁴C Dating Centre, Department of Physics & Astronomy, University of Aarhus, Ny Munkegade 120, DK-8000 Aarhus C, Denmark. ¹⁰Department of Anthropology, Southern Methodist University, Dallas, Texas 75275, USA. ¹¹Department of Integrative Biology, University of California, Berkeley, 4134 Valley Life Sciences Building, Berkeley, California 94720, USA.

*These authors contributed equally to this work.

conservatively estimate contamination to be 2.5%, which is within the normal range obtained observed in genomic data from ancient human remains¹⁷, and we further show this contamination to be of European origin (Supplementary Information 4).

We compiled an autosomal reference data set consisting of published SNP array data^{18–23} as well as new data generated from one of the claimant tribes, the Colville (Supplementary Information 10). Due to high levels of recent admixture in many Native American populations, we masked European ancestry from the Native Americans (Supplementary Information 6). No masking was done on the Kennewick Man. When we compare Kennewick Man with the worldwide panel of populations, a clear genetic similarity to Native Americans is observed both in principal components analysis (PCA) and using f_3 -outgroup statistics (Fig. 1a, b). In particular, we can reject the hypothesis that Kennewick Man is more closely related to Ainu or Polynesians than he is to Native Americans, as seen in a D -statistic-based test where no trees of the type ((CHB,Ainu/Polynesian),(X,Karitiana)) with X being Kennewick Man, the Clovis age Anzick-1 child (ref. 12) or a modern Native American genome are rejected (Extended Data Fig. 3). Model-based clustering using ADMIXTURE²⁴ shows that Kennewick Man has ancestry proportions most similar to those of other Northern Native Americans (Fig. 1c and Supplementary Information 7), especially the Colville, Ojibwa, and Algonquin. Considering the Americas only, f_3 -outgroup and D -statistic based analyses show that Kennewick Man, like the Anzick-1 child, shares a high degree of ancestry with Native Americans from Central and South America, and that Kennewick Man also groups with geographically close tribes including the Colville (Fig. 2a, b and Extended Data Fig. 4). Despite this similarity, Anzick-1 and Kennewick Man have dissimilar genetic affinities to contemporary Native Americans. In particular, we find that Anzick-1 is more closely related to Central/Southern Native Americans than is Kennewick Man (Extended Data Fig. 5). The pattern observed in Kennewick Man is mirrored in the Colville, who also show a high affinity with Southern populations (Fig. 2c), but are most closely related to a neighbouring population in the data set (Stswecem'c; Extended

Data Fig. 4c). This is in contrast to other populations such as the Chipewyan, who are more closely related to Northern Native Americans rather than to Central/Southern Native Americans in all comparisons (Fig. 2d and Extended Data Fig. 4d).

Our results are in agreement with a basal divergence of Northern and Central/Southern Native American lineages as suggested from the analysis of the Anzick-1 genome¹². However, the genetic affinities of Kennewick Man reveal additional complexity in the population history of the Northern lineage. The finding that Kennewick is more closely related to Southern than many Northern Native Americans (Extended Data Fig. 4) suggests the presence of an additional Northern lineage that diverged from the common ancestral population of Anzick-1 and Southern Native Americans (Fig. 3). This branch would include both Colville and other tribes of the Pacific Northwest such as the Stswecem'c, who also appear symmetric to Kennewick with Southern Native Americans (Extended Data Fig. 4). We also find evidence for additional gene flow into the Pacific Northwest related to Asian populations (Extended Data Fig. 5), which is likely to post-date Kennewick Man. We note that this gene flow could originate from within the Americas, for example in association with the migration of paleo-Eskimos or Inuit ancestors within the past 5,000 years²⁵, or the gene flow could be post-colonial¹⁹.

We used a likelihood ratio test to test for direct ancestry of Kennewick Man for two members of the Colville tribe who show no evidence of recent European admixture. This test allows us to determine if the patterns of allele frequencies in the Colville and Kennewick Man are compatible with direct ancestry of the Colville from the population to which Kennewick Man belonged, without any additional gene flow. As a comparison we also included analyses of four other Native Americans with high quality genomes: two Northern Athabaskan individuals from Canada²⁵ and two Karitiana individuals from Brazil^{12,13}. Although the test rejects the null hypothesis of direct ancestry with no subsequent gene flow in all cases, it only does so very weakly for the Colville tribe members (Table 1 and Supplementary Information 8). These findings can be explained as: (1) the Colville

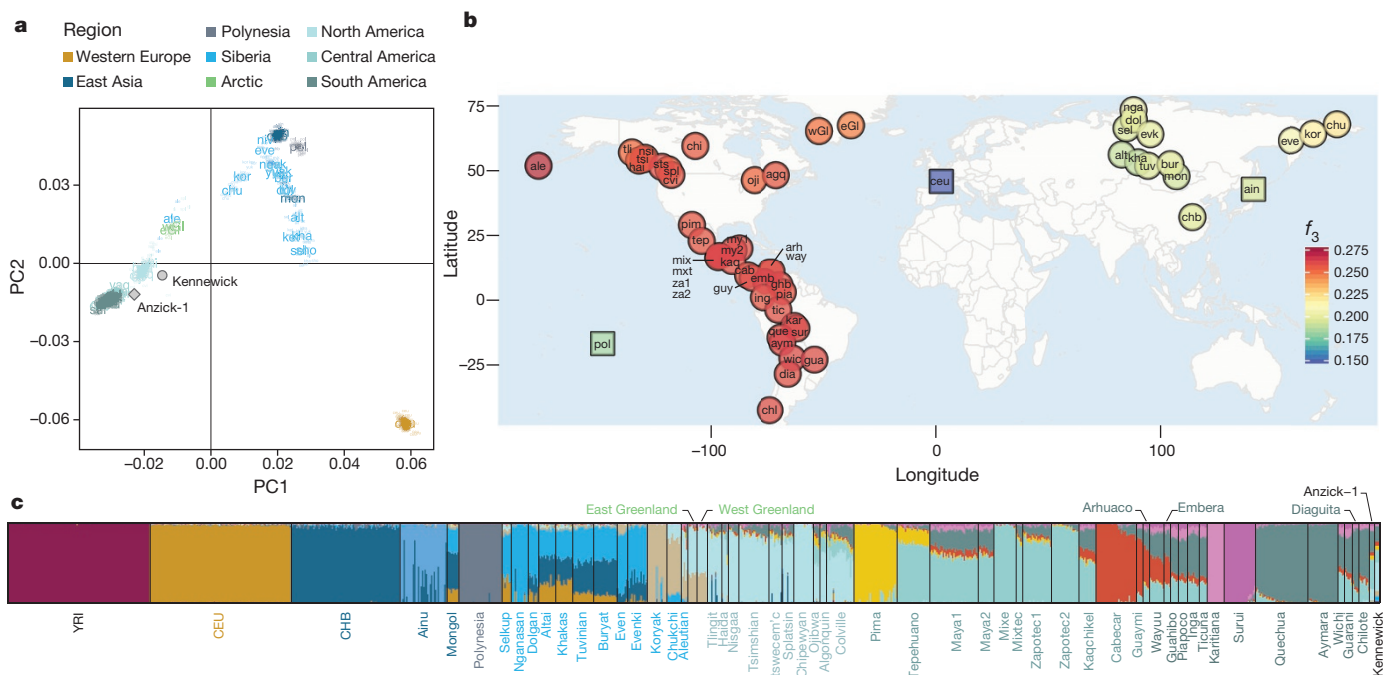


Figure 1 | Genetic affinities between Kennewick Man and a panel of world-wide populations. **a**, Principal components analysis (PCA) projecting Kennewick Man and Anzick-1 onto a set of out-of-Africa populations. **b**, Heat map of f_3 -outgroup statistics between Kennewick Man, Native Americans, Siberians and additional populations with suggested relationship to Kennewick

Man (in squares). Warmer colours indicate higher allele sharing. For list of population labels, see the Methods section. **c**, Admixture proportions for worldwide set of population, including masked Native American, Anzick-1 and Kennewick, shown at $K = 14$.

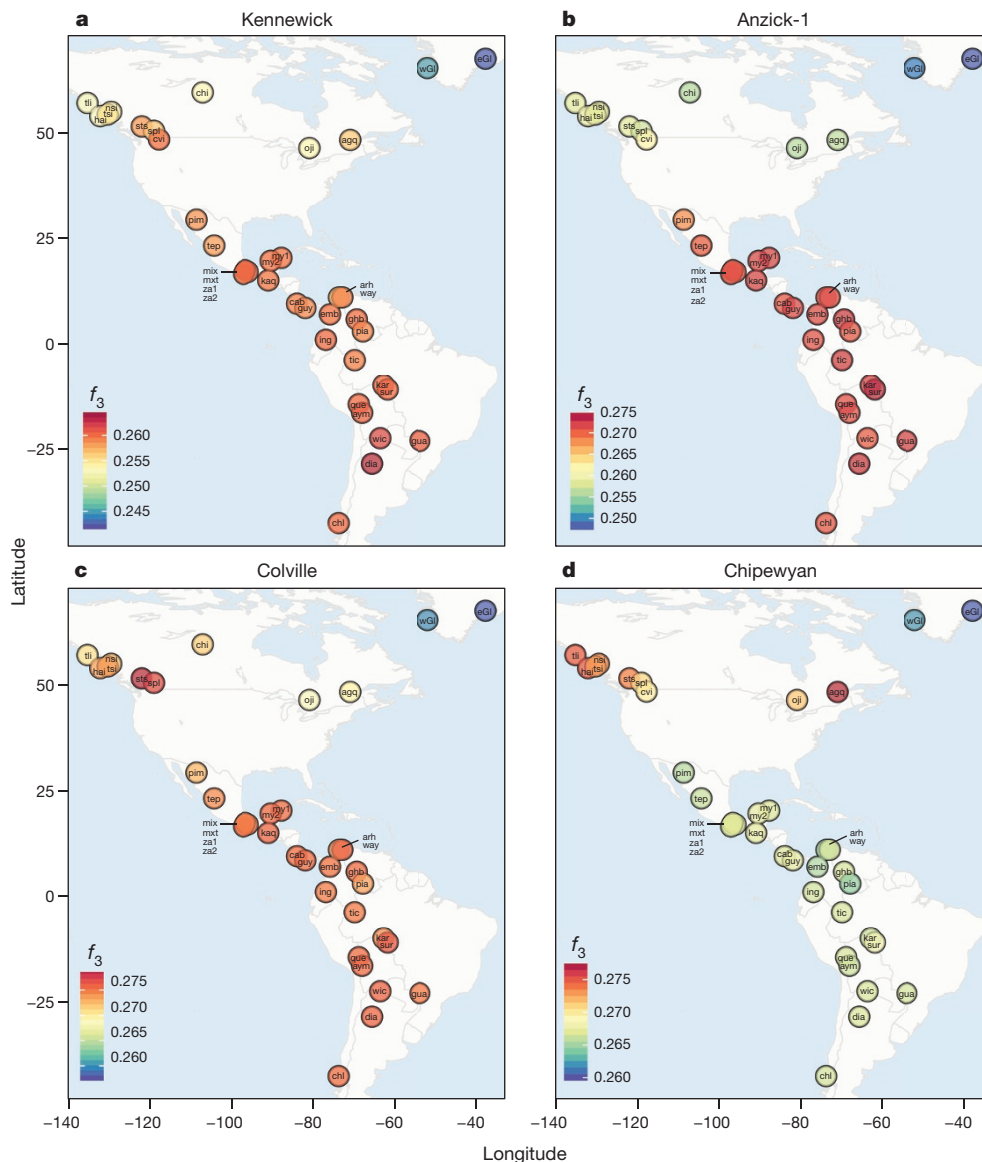


Figure 2 | Shared ancestry among samples within the Americas. a–d, Heat maps of f_3 -outgroup statistics testing (YRI; Native Americans, X), where X is Kennewick Man (a), Anzick-1 (b), Colville (c) or Chipewyan (d). Warmer colours indicate higher allele sharing, for list of population labels, see the Methods section.

individuals are direct descendants of the population to which Kennewick Man belonged, but subsequently received some relatively minor gene flow from other American populations within the last ~8,500 years, in agreement with our findings above; (2) the Colville individuals descend from a population that ~8,500 years was slightly

diverged from the population which Kennewick Man belonged or (3) a combination of both.

It has been asserted that “...cranial morphology provides as much insight into population structure and affinity as genetic data”²². However, although recent and previous craniometric analyses have consistently concluded that Kennewick Man is unlike modern Native Americans, they disagree regarding his closest population affinities, the cause of the apparent differences between Kennewick Man and modern Native Americans, and whether the differences are historically important (for example, represent an earlier, separate

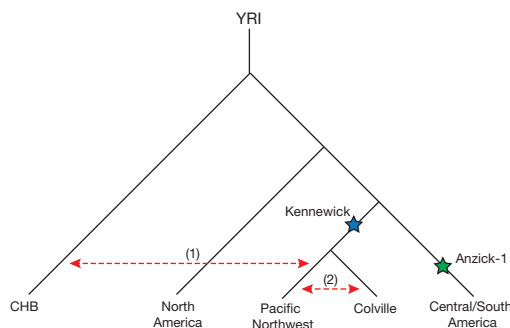


Figure 3 | Illustration of Native American population history. Depicted is a population tree consistent with the broad affinities between modern and ancient Native Americans. Kennewick Man and the Anzick-1 child are indicated with blue and green stars respectively. Red dashed arrows indicate gene flow (1) of Asian-related ancestry with tribes of the Pacific Northwest and (2) between Colville and neighbouring tribes.

Table 1 | Direct ancestry test

	Coalescence probability in Kennewick lineage (c_1)	Coalescence probability in reference lineage (c_2)	$2 \times \text{Log likelihood ratio of } H_0: c_1 = 0 \text{ vs HA: } c_1 > 0$
Colville 2	0.015	0.072	19.41
Colville 8	0.007	0.097	3.93
Athabascan 1	0.048	0.073	505.52
Athabascan 2	0.056	0.097	807.69
BI16 (Karitiana)	0.040	0.140	423.87
HGDP00998 (Karitiana)	0.040	0.170	446.30

c_1 is the probability of coalescence in the Kennewick lineage and c_2 is the probability of coalescence in the reference population lineage. A value of $c_1 = 0$ corresponds to direct Kennewick ancestry of the reference population with no subsequent gene flow. Smaller likelihood ratios indicate less evidence against direct Kennewick ancestry.

migration to the Americas), or simply represent intra-population variation^{2,3,7,10,26–28}. These inconsistencies are probably owing to the difficulties in assigning a single individual when comparing to population-mean data, without explicitly taking into account within-population variation. Reanalysis of W. W. Howells' worldwide modern human craniometric data set²⁹ (Supplementary Information 9) shows that biological population affinities of individual specimens cannot be resolved with any statistical certainty. Although our individual-based craniometric analyses confirm that Kennewick Man tends to be more similar to Polynesian and Ainu peoples than to Native Americans, Kennewick Man's pattern of craniometric affinity falls well within the range of affinity patterns evaluated for individual Native Americans (Supplementary Information 9). For example, the Arikara from North Dakota (the Native American tribe representing the geographically closest population in Howells' data set to Kennewick), exhibit with high frequency closest affinities with Polynesians (Supplementary Information 9). Yet, the Arikara have typical Native-American mitochondrial DNA haplogroups³⁰, as does Kennewick Man. We conclude that the currently available number of independent phenetic markers is too small, and within-population craniometric variation too large, to permit reliable reconstruction of the biological population affinities of Kennewick Man.

In contrast, block bootstrap results from the autosomal DNA data are highly statistically significant (Extended Data Fig. 3), showing stronger association of the Kennewick man with Native Americans than with any other continental group. We also observe that the autosomal DNA, mitochondrial DNA and Y chromosome data all consistently show that Kennewick Man is directly related to contemporary Native Americans, and thus show genetic continuity within the Americas over at least the past 8,000 years. Identifying which modern Native American groups are most closely related to Kennewick Man is not possible at this time as our comparative DNA database of modern peoples is limited, particularly for Native-American groups in the United States. However, among the groups for which we have sufficient genomic data, we find that the Colville, one of the Native American groups claiming Kennewick Man as ancestral, show close affinities to that individual or at least to the population to which he belonged. Additional modern descendants could be identified as more Native American groups are sequenced. Finally, it is clear that Kennewick Man differs significantly from the Anzick-1 child who is more closely related to the modern tribes of Mesoamerica and South America¹², possibly suggesting an early population structure within the Americas.

Online Content Methods, along with any additional Extended Data display items and Source Data, are available in the online version of the paper; references unique to these sections appear only in the online paper.

Received 28 April; accepted 10 June 2015.

Published online 18 June 2015.

1. Taylor, R. E., Kirner, D. L., Southon, J. R. & Chatters, J. C. Radiocarbon dates of Kennewick Man. *Science* **280**, 1171 (1998).
2. Owsley, D. W. & Jantz, R. L. *Kennewick Man* (Texas A&M Univ. Press, 2014).
3. Chatters, J. C. The recovery and first analysis of an Early Holocene human skeleton from Kennewick, Washington. *Am. Antiq.* **65**, 291–316 (2000).
4. Chatters, J. C. *Ancient Encounters* (Simon and Schuster, 2001).
5. *Bonnichsen v. United States*, 217 F. Supp. 2d 1116 (D. Or. 2002).
6. Owsley, D. W. & Jantz, R. L. Archaeological politics and public interest in paleoamerican studies: lessons from Gordon Creek Woman and Kennewick Man. *Am. Antiq.* **66**, 565–575 (2001).
7. Powell, J. F. *The First Americans* (Cambridge Univ. Press, 2005).
8. Swedlund, A. & Anderson, D. Gordon Creek Woman meets Kennewick Man: new interpretations and protocols regarding the peopling of the Americas. *Am. Antiq.* **64**, 569–576 (1999).
9. Thomas, D. H. *Skull Wars: Kennewick Man, Archaeology, and the Battle for Native American Identity* (Basic Books, 2001).
10. Steele, D. G. & Powell, J. F. in *The First Americans* (ed. Jablonski, N. G.) (Univ. California Press, 2002).
11. McManamon, F. Kennewick Man. <http://www.nps.gov/archeology/kennewick/Index.htm> (National Park Service, Washington DC, USA, 2004).
12. Rasmussen, M. *et al.* The genome of a Late Pleistocene human from a Clovis burial site in western Montana. *Nature* **506**, 225–229 (2014).


13. Meyer, M. *et al.* A high-coverage genome sequence from an archaic Denisovan individual. *Science* **338**, 222–226 (2012).
14. Allentoft, M. E. *et al.* The half-life of DNA in bone: measuring decay kinetics in 158 dated fossils. *Proc. R. Soc. Lond. B* **279**, 4724–4733 (2012).
15. Perego, U. A. *et al.* The initial peopling of the Americas: a growing number of founding mitochondrial genomes from Beringia. *Genome Res.* **20**, 1174–1179 (2010).
16. Dulik, M. C. *et al.* Y-chromosome analysis reveals genetic divergence and new founding native lineages in Athapaskan- and Eskimoan-speaking populations. *Proc. Natl Acad. Sci. USA* **109**, 8471–8476 (2012).
17. Seguin-Orlando, A. *et al.* Genomic structure in Europeans dating back at least 36,200 years. *Science* **346**, 1113–1118 (2014).
18. Reich, D. *et al.* Reconstructing Native American population history. *Nature* **488**, 370–374 (2012).
19. Verdu, P. *et al.* Patterns of admixture and population structure in native populations of northwest North America. *PLoS Genet.* **10**, e1004530 (2014).
20. Frazer, K. A. *et al.* A second generation human haplotype map of over 3.1 million SNPs. *Nature* **449**, 851–861 (2007).
21. Japanese Archipelago Human Population Genetics Consortium. The history of human populations in the Japanese Archipelago inferred from genome-wide SNP data with a special reference to the Ainu and the Ryukyuan populations. *J. Hum. Genet.* **57**, 787–795 (2012).
22. Wollstein, A. *et al.* Demographic history of Oceania inferred from genome-wide data. *Curr. Biol.* **20**, 1983–1992 (2010).
23. Kayser, M. *et al.* Genome-wide analysis indicates more Asian than Melanesian ancestry of Polynesians. *Am. J. Hum. Genet.* **82**, 194–198 (2008).
24. Alexander, D. H., Novembre, J. & Lange, K. Fast model-based estimation of ancestry in unrelated individuals. *Genome Res.* **19**, 1655–1664 (2009).
25. Raghavan, M. *et al.* The genetic prehistory of the New World Arctic. *Science* **345**, 1255832 (2014).
26. Brace, C. L. *et al.* Old World sources of the first New World human inhabitants: a comparative craniofacial view. *Proc. Natl Acad. Sci. USA* **98**, 10017–10022 (2001).
27. Jantz, R. L. & Owsley, D. W. Variation among early North American crania. *Am. J. Phys. Anthropol.* **114**, 146–155 (2001).
28. Jantz, R. L. & Owsley, D. W. in *Paleoamerican Origins: Beyond Clovis* (eds Bonnichsen, R., Lepper, B., Stanford, D. J. & Waters, M. R.) 267–275 (Texas A & M Univ. Press, 2005).
29. Howells, W. W. Howells' craniometric data on the internet. *Am. J. Phys. Anthropol.* **101**, 441–442 (1996).
30. Lawrence, D. M. *et al.* Mitochondrial DNA of protohistoric remains of an Arikara population from South Dakota: implications for the macro-Siouan language hypothesis. *Hum. Biol.* **82**, 157–178 (2010).

Supplementary Information is available in the online version of the paper.

Acknowledgements We thank the members of the Confederated Tribes of the Colville Reservation who provided their DNA for this study. We would like to also thank Nez Perce Tribe, Umatilla Tribe, Yakama Nation, and Wanapum Band for their consultation. We thank C. B. Pulliam and G. C. Celmer of the US Army Corps of Engineers, and the Burke Museum of the University of Washington, especially L. Phillips. We thank the Danish National Research Foundation and the Lundbeck Foundation for financial support and the Danish National Sequencing Centre for help with sequencing. M.R. was funded by grant 12-131829 from the Danish Council for Independent Research. J.V.M.-M. was supported by 'Consejo Nacional de Ciencia y Tecnología' (Mexico). G.D.P. was supported by the National Science Foundation Graduate Research Fellowship under Grant No. DGE-1147470. I.M. was funded by a DFF-YDUN grant from the Danish Council for Independent Research. C.V. was funded by Marie Curie Intra-European Fellowship-FP7-People-PIEF-GA-2009-255503

Author Contributions E.W. headed the project. E.W. and T.W.S. initiated the work. D.J.M., R.S.M. and C.V. provided archaeological knowledge and ethical advice. M.R. conducted the laboratory work. M.R., M.S., A.A., T.S.K., J.V.M.-M., G.D.P., M.E.A., I.M., H.J., L.O., C.D.B. and R.N. conducted the DNA analyses. C.P.E.Z. and M.S.P.L. conducted the morphological analyses. E.W., D.J.M. and M.R. wrote the paper with contributions from all the authors.

Author Information The Kennewick Man genome sequence has been deposited in the Sequence Read Archive under accession number SRS937952. The Colville SNP chip data can be used for scientific confirmation of our findings (with regard to the group's direct ancestry to Kennewick Man). It cannot be used for any other purpose. The Colville data in this study are available under data access agreement with E.W. The bam file with mapped data can be downloaded from (<http://purl.stanford.edu/bg616nn8691>). Reprints and permissions information is available at www.nature.com/reprints. The authors declare competing financial interests: details are available in the online version of the paper. Readers are welcome to comment on the online version of the paper. Correspondence and requests for materials should be addressed to E.W. (ewillerslev@snm.ku.dk).

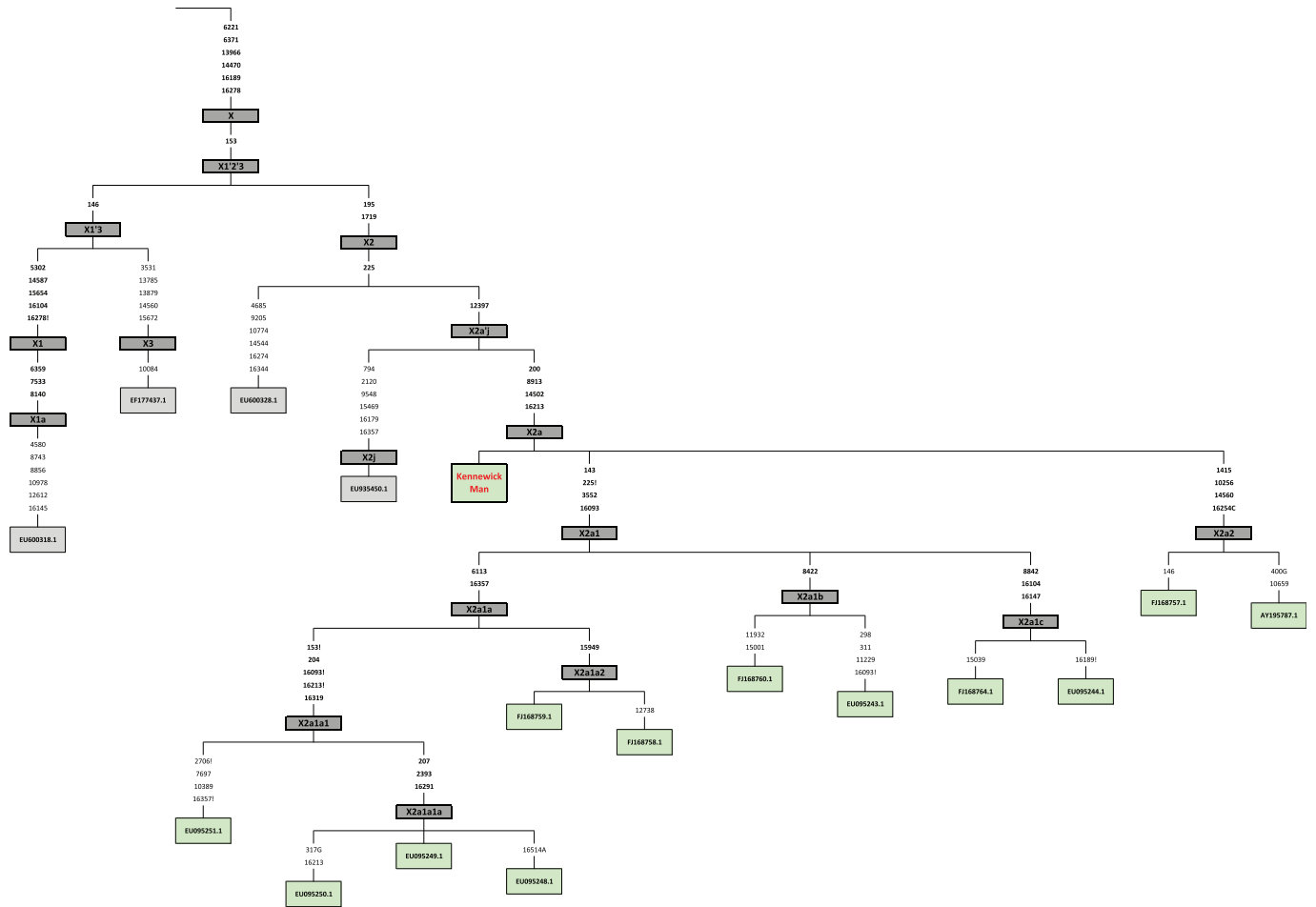
 This work is licensed under a Creative Commons Attribution-NonCommercial-ShareAlike 3.0 Unported licence. The images or other third party material in this article are included in the article's Creative Commons licence, unless indicated otherwise in the credit line; if the material is not included under the Creative Commons licence, users will need to obtain permission from the licence holder to reproduce the material. To view a copy of this licence, visit <http://creativecommons.org/licenses/by-nc-sa/3.0>

METHODS

We extracted DNA from a 200-mg bone fragment from Kennewick Man, and built both single and double stranded DNA libraries, which were sequenced on the Illumina HiSeq platform (Supplementary Information sections 1, 2). We performed DNA damage analyses and estimated decay rates to verify authenticity; additionally we estimated contamination on both nuclear and mitochondrial DNA (Supplementary Information sections 2, 3 and 4). For the nuclear contamination we developed a model to identify the most likely source population (Supplementary Information section 4). Both mitochondrial and Y-chromosome haplogroup were determined (Supplementary Information sections 2 and 5). To resolve the ancestry of Kennewick Man, we performed PCA, outgroup f_3 - and D -statistics, as well as ADMIXTURE analyses on a panel of published SNP array data that was collected and curated from worldwide populations with suggested relationship to Kennewick Man (Supplementary Information sections 6 and 7), in addition to data generated from members of the Colville Tribe (Supplementary Information section 1). Individual and tribal consent was obtained for all study participants, and the National Committee on Health Research Ethics in Denmark had no comments

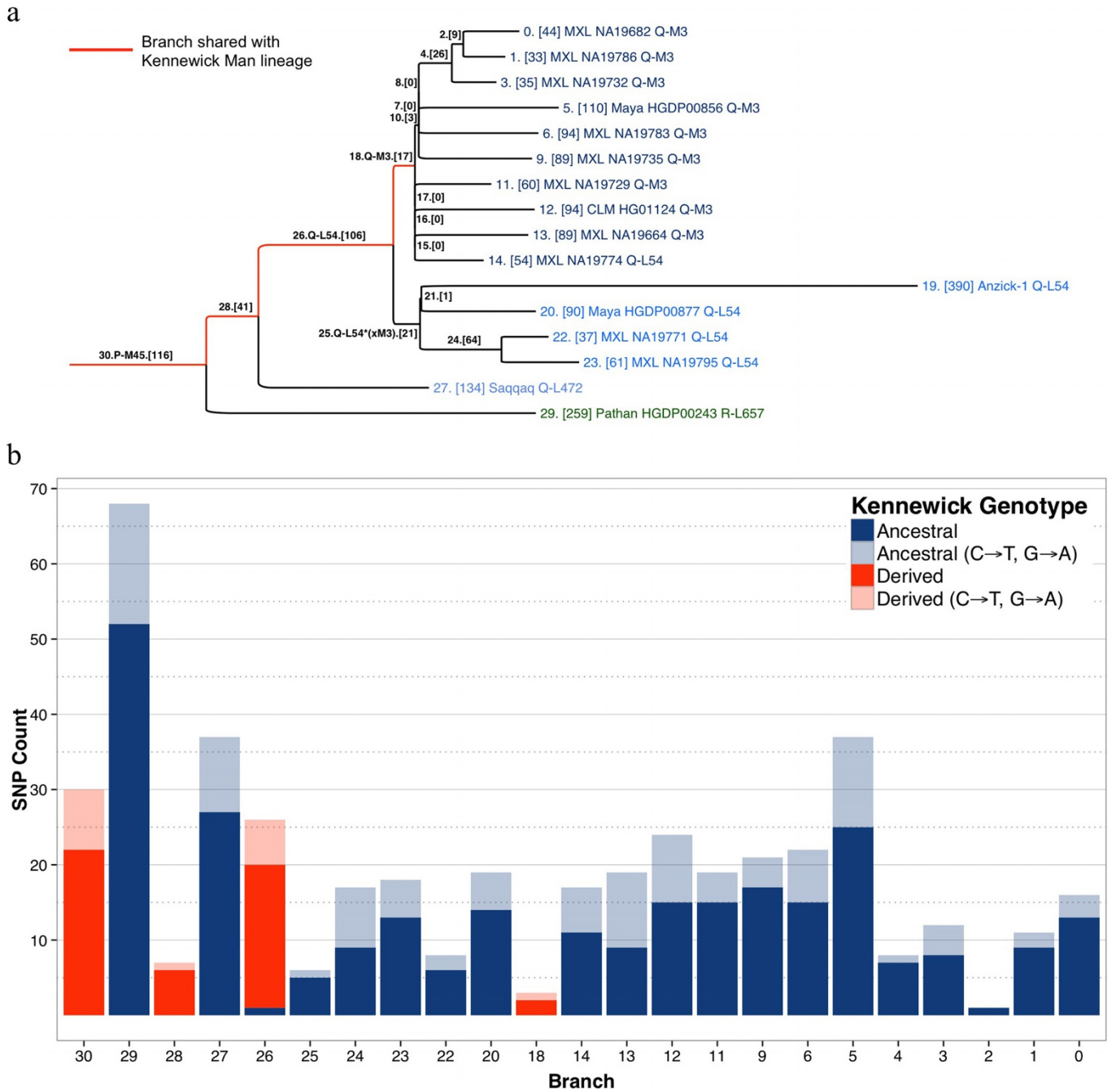
on the design (H-3-2012-FSP21). We tested if Kennewick Man belonged to a population ancestral to the Colville Tribe and estimated their divergence time (Supplementary Information section 8). Lastly, we reanalysed the craniometric data for Kennewick Man, and compared it to both individual samples and population mean data (Supplementary Information section 9).

Population labels: agq, Algonquin; ain, Ainu; ale, Aleutian; alt, Altai; arh, Arhuaco; aym, Aymara; bur, Buryat; cab, Cabecar; ceu/CEU, Utah residents with ancestry from northern and western Europe; chb/CHB, Han Chinese in Beijing, China; chi, Chipewyan; chl, Chilote; chu, Chukchi; cvi, Colville; dia, Diaguaita; dol, Dolgan; eGI, EastGreenland; emb, Embera; eve, Even; evk, Evenki; ghb, Guahibo; gua, Guarani; guy, Guaymi; hai, Haida; ing, Inga; kaq, Kaqchikel; kar, Karitiana; kha, Khakas; kor, Koryak; mix, Mixe; mon, Mongol; mxt, Mixtec; my1, Maya1; my2, Maya2; nga, Nganasan; nsi, Nisgaa; oji, Ojibwa; pia, Piapoco; pim, Pima; pol, Polynesia; que, Quechua; sel, Selkup; spl, Splatsin; sts, Stswecem'c; sur, Surui; tep, Tepehuano; tic, Ticuna; tli, Tlingit; tsi, Tsimshian; tuv, Tuvinian; wGI, WestGreenland; way, Wayuu; wic, Wichi; yri/YRI, Yoruba in Ibadan, Nigeria; za1, Zapotec1; za2, Zapotec2.



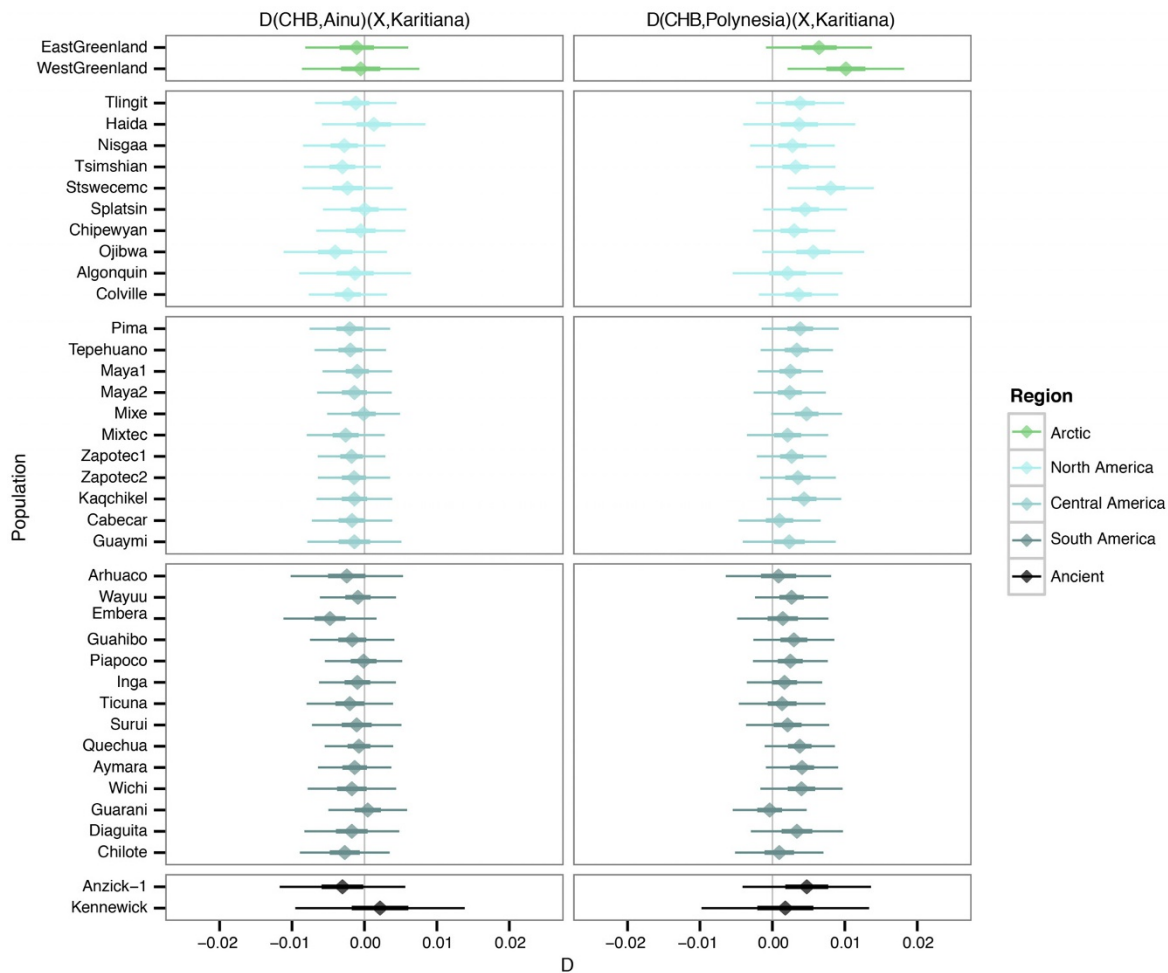
Extended Data Figure 1 | Phylogenetic tree of mitochondrial haplogroup X including Kennewick Man. A median-joining network of GenBank sequences from haplogroup X was constructed as described in the Supplementary Information. Haplogroup names are indicated by bold dark grey boxes,

sequences of Native American origin are in light green background. Back mutations to ancestral state are denoted with an ! symbol. GenBank accession numbers are shown in boxes at branch tips.



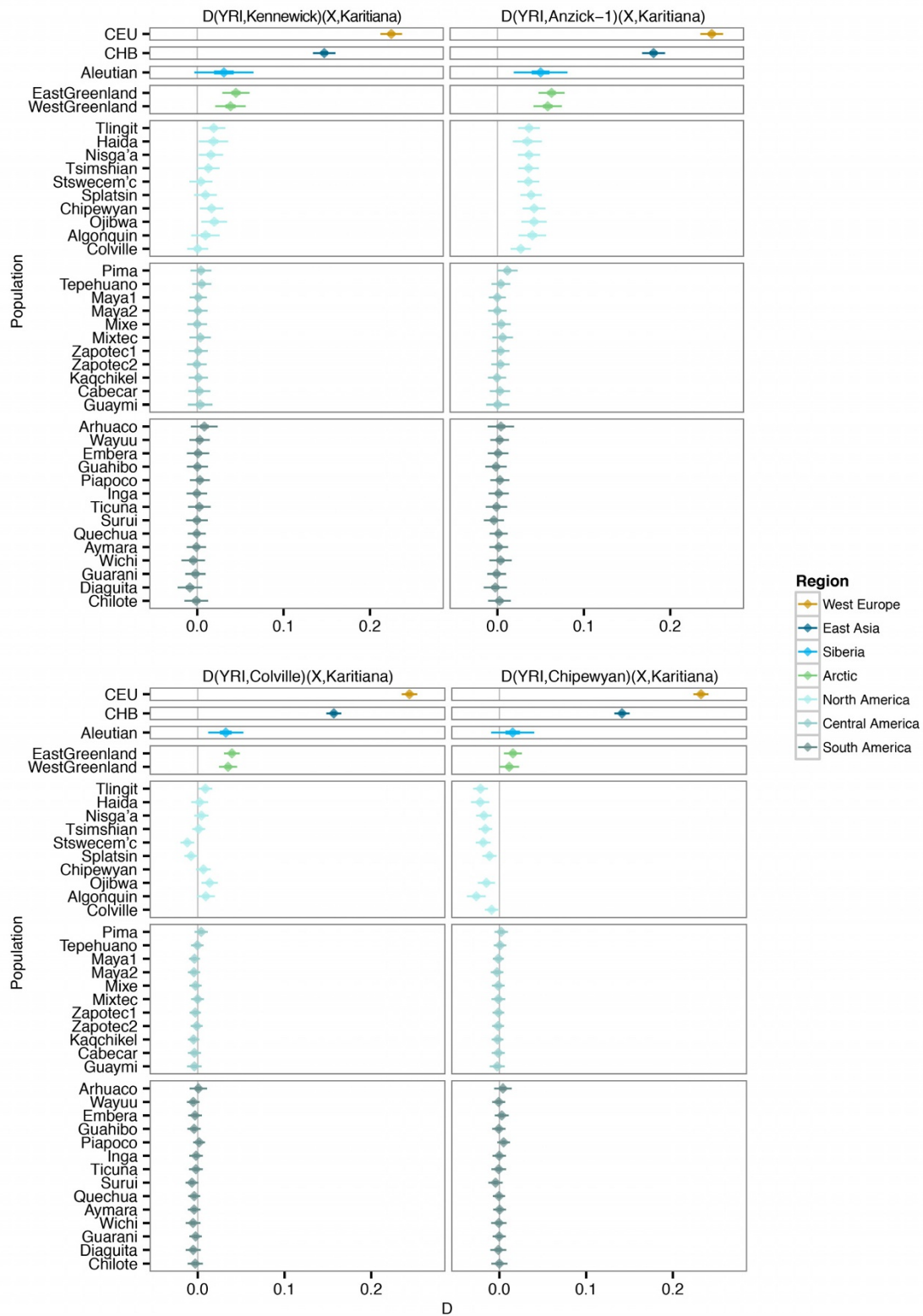
Extended Data Figure 2 | Y-chromosome haplogroup. **a**, Phylogenetic tree including representative sequences of haplogroup P, the clade that includes haplogroups Q and R. Kennewick Man shares ancestry with orange branches. Each branch is labelled with an integer index and, in brackets, the number of SNPs that define it. **b**, Counts of SNPs from each branch of the tree, stratified by

Kennewick Man genotype (ancestral in blue, derived in orange) and mutation type (C→T and G→A transitions coloured more lightly). Branch 19 was omitted to preserve scale; the Kennewick genotype was ancestral at all 145 sites for which read data were available.



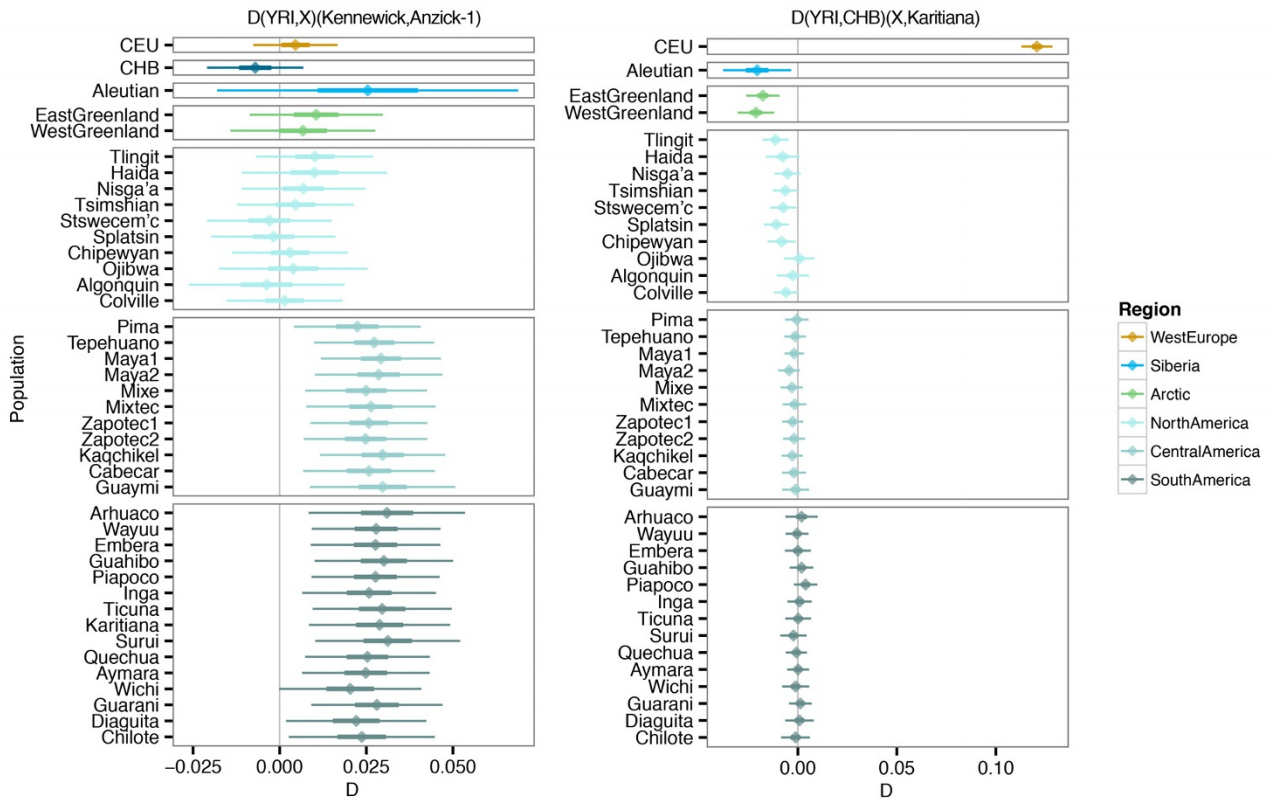
Extended Data Figure 3 | *D*-statistic-based test for Ainu and Polynesian affinity to Han Chinese and Native Americans. Test of the type $D((CHB,Ainu/Polynesia),(X,Karitiana))$, where X is an Arctic or Native American population, including Kennewick Man and Anzick-1. Values equal

to 0, has population X being closer to Karitiana than either CHB or Ainu/Polynesian. Thick and thin whiskers represent 1 and 3 standard errors, respectively.



Extended Data Figure 4 | Similarity between Kennewick Man and Anzick-1 as well as Colville. Test of $D((YRI, Kennewick/Anzick-1/Colville/Chipewyan), (X, Karitiana))$, to illustrate similarities between Kennewick Man

and Anzick-1, and the Colville tribe. Thick and thin whiskers represent 1 and 3 standard errors, respectively.



Extended Data Figure 5 | Affinity of Kennewick Man and Anzick-1 to Native American populations. Test of $D((YRI,X),(Kennewick,Anzick-1))$ to distinguish different affinities of the ancient samples, and

$D((YRI,CHB),(X,Karitiana))$ to test for recent Asian gene flow. Thick and thin whiskers represent 1 and 3 standard errors, respectively.