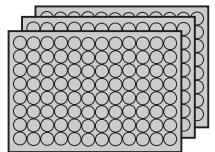
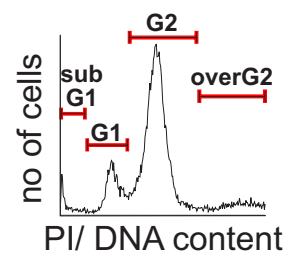


Transfection of S2 cells in triplicate

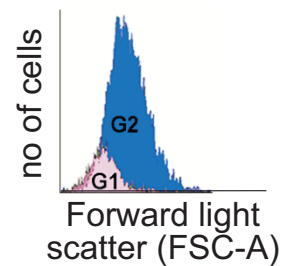


4 days  
Fixation of cells,  
DNA staining

High-throughput  
flow cytometry  
analysis



DNA content phenotypes  
subG1 (apoptosis)  
G1  
G2  
overG2 (cytokinesis)



Cell size phenotypes  
G1 FSC-A  
G2 FSC-A