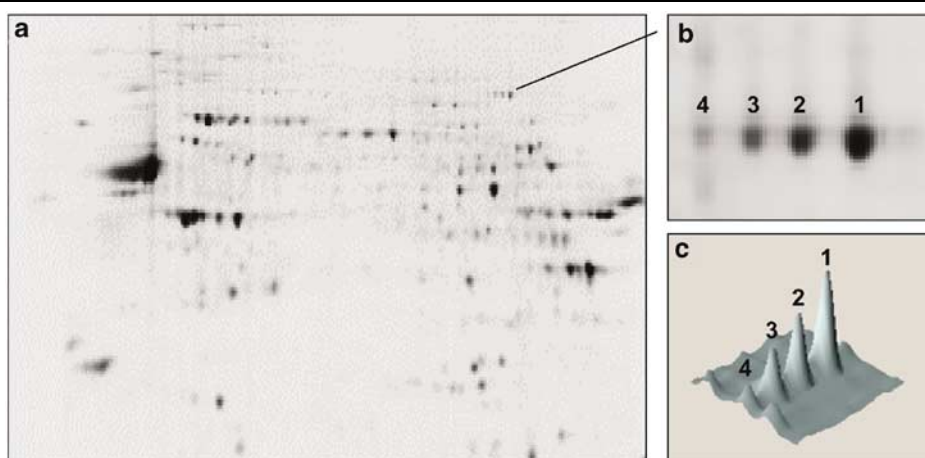


**IMAGE**

## Protein profiling of human post-mortem brain using two-dimensional fluorescence difference gel electrophoresis (2-D DIGE)

JE Swatton<sup>1,2</sup>, S Prabakaran<sup>1,2</sup>, NA Karp<sup>3</sup>, KS Lilley<sup>3</sup> and S Bahn<sup>1,2</sup>

<sup>1</sup>Department of Neurobiology, Babraham Institute, Cambridge, UK; <sup>2</sup>Department of Psychiatry, University of Cambridge, Addenbrooke's Hospital, Cambridge, UK; <sup>3</sup>Department of Biochemistry, Cambridge Centre for Proteomics, University of Cambridge, Cambridge, UK



*Molecular Psychiatry* (2004) **9**, 121. doi:10.1038/sj.mp.4001480

Post-translational modifications and/or isoforms are visible by 2-D gel electrophoresis. Protein extracted from human prefrontal cortex (100  $\mu$ g) was labelled with Cy3 (400 pmol) and separated on a 24 cm pH 3–10 nonlinear IPG strip and 12% SDS-polyacrylamide gel. The gel image (a) was visualised by scanning for Cy3 fluorescence using a Typhoon™ 9400 scanner. The enlarged gel image (b) shows a charge trail of four protein spots characteristic of post-translational modifications such as phosphorylation and/or protein isoforms. The corresponding 3-D profile for spots 1–4 are shown in (c) and are generated from DeCyder BVA software. The amount of protein is proportional to the volume of the protein peak. For more information on this topic, please see the article by Swatton *et al* on page 128–143.