

Original Article

C-Reactive Protein, Left Ventricular Mass Index, and Risk of Cardiovascular Disease in Essential Hypertension

Yoshio IWASHIMA¹⁾, Takeshi HORIO²⁾, Kei KAMIDE²⁾, Hiromi RAKUGI¹⁾,
Toshio OGIHARA¹⁾, and Yuhei KAWANO²⁾

We examined the association between C-reactive protein (CRP) and left ventricular mass index (LVMI), and investigated prospectively the incidence of cardiovascular disease (CVD) in asymptomatic subjects with essential hypertension. A total of 629 subjects (mean age 62 years, 51% female) free of prior CVD were included in this study. In cross-sectional analysis at baseline, patients were divided into three groups according to serum CRP levels: <1, 1 to 2, and >2 mg/L. In multivariate analysis, LVMI increased in a step-wise fashion with increasing CRP levels in both men (127.2±2.9, 138.7±4.1, 141.8±3.5 g/m², respectively; $F=6.85$, $p=0.001$) and women (119.5±3.6, 129.2±4.9, 130.2±4.8 g/m²; $F=4.23$, $p=0.031$). During follow-up (mean 32 months), 52 subjects (19 female) developed CVD. Kaplan-Meier analysis with log-rank tests showed a significantly poorer event-free survival rate in the group with elevated CRP levels (≥1 mg/L) ($\chi^2=8.22$, $p<0.01$) and that with left ventricular hypertrophy (LVH) ($\chi^2=19.91$, $p<0.01$). When participants were divided into four groups on the basis of CRP level (<1 or ≥1 mg/L) and the absence or presence of LVH, the group with LVH/CRP ≥1 mg/L showed markedly poorer event-free survival ($\chi^2=28.02$, $p<0.01$), and the adjusted hazard ratio by multivariate Cox regression analysis was 2.65 (95% confidence interval [CI]=1.55–5.46, $p<0.01$). In the subgroup with LVH ($n=362$), a significantly lower event-free survival rate of CVD was also observed in the group with CRP ≥1 mg/L (hazard ratio [HR] 1.37, 95% CI: 1.02–1.85, $p=0.025$). Our findings demonstrate that the CRP level is independently associated with LVMI, and suggest that measurement of CRP may provide clinically important prognostic information to supplement LVH. (*Hypertens Res* 2007; 30: 1177–1185)

Key Words: C-reactive protein, hypertrophy, cardiovascular disease, echocardiography, follow-up study

Introduction

Hypertension is a central risk factor for cardiovascular disease (CVD), and the cardiovascular prognosis in patients with hypertension depends not only on the level of blood pressure (BP), but also on the presence of associated risk factors. Inflammatory processes are now recognized to play a fundamental role in atherogenesis (1). In addition, basic and clinical

data suggest the possible involvement of inflammation in the genesis of hypertension and that hypertension in turn induces a proinflammatory response (2–4). C-reactive protein (CRP), a marker of the reactant plasma protein component of the inflammatory response, has been found to be a robust predictor of the development of CVD in several large epidemiological studies (5–10). The guidelines from the European Society of Hypertension and the European Society of Cardiology (ESH-ESC) (11), and the Centers for Disease Control

From the ¹⁾Department of Geriatric Medicine, Osaka University Graduate School of Medicine, Suita, Japan; and ²⁾Division of Hypertension and Nephrology, Department of Medicine, National Cardiovascular Center, Suita, Japan.

Address for Reprints: Takeshi Horio, M.D., Ph.D., Division of Hypertension and Nephrology, Department of Medicine, National Cardiovascular Center, 5–7–1, Fujishirodai, Suita 565–8565, Japan. E-mail: thorio@ri.ncvc.go.jp

Received April 25, 2007; Accepted in revised form July 8, 2007.

and Prevention/American Heart Association (CDC/AHA) (12) also stress the importance of measuring CRP in primary prevention. On the other hand, an elevated CRP level is affected by or linked to hypertension and many metabolic factors such as insulin resistance (13, 14), all of which are also associated with left ventricular hypertrophy (LVH). Previous reports have examined the association between CRP and left ventricular (LV) mass, but the results obtained are controversial (15–19). Thus, the clinical importance of CRP in LVH has not been fully elucidated. In this study, we investigated the potential interrelationships between CRP and LV mass index (LVMI) in patients with essential hypertension by using the clinical cut-off levels of CRP. We further sought to evaluate the interrelationships between CRP, LVMI, and incidence of CVD in asymptomatic hypertensive patients. In addition, we attempted to determine whether CRP might provide useful prognostic information to enhance that provided by LVH.

Methods

Study Subjects

From March 1997 to March 2004, a total of 629 essential hypertensive patients who had good-quality echocardiographic recordings were consecutively enrolled in this study and monitored for 31.6 ± 0.8 months. All subjects were selected from patients who were admitted and underwent medical investigation including a general check-up at the National Cardiovascular Center in Osaka, Japan. Hypertension was defined as systolic BP (SBP) ≥ 140 mmHg and/or diastolic BP (DBP) ≥ 90 mmHg on repeated measurements, or receipt of antihypertensive treatment. Diabetes mellitus was defined according to the American Diabetes Association criteria (20). Smoking status was determined by interview, and defined as currently smoking or not. Ischemic heart disease was defined as a 75% or greater organic stenosis of at least one major coronary artery as confirmed by coronary angiography, or a history of myocardial infarction or percutaneous transluminal coronary angioplasty. Exclusion criteria included ischemic heart disease, acute coronary syndrome, congestive heart failure (CHF) (New York Heart Association [NYHA] class II or greater), old cerebral infarction, history of transient ischemic attack, secondary hypertension, receipt of hormone replacement therapy and/or an anti-inflammatory drug (aspirin or nonsteroidal anti-inflammatory drug [NSAID]), chronic infection, and cancer. Participants with moderate or severe aortic or mitral regurgitation or a heart rate > 100 bpm were also excluded. All procedures in the present study were carried out in accordance with institutional and national ethical guidelines for human studies. All subjects enrolled in this study were Japanese, and all gave informed consent to participate in this study.

Baseline Clinical Characteristics

After fasting overnight, BP was measured with an appropriate arm cuff and a mercury column sphygmomanometer on the left arm after a resting period of at least 10 min in the supine position. After BP measurement, venous blood sampling was performed in all subjects. Height and body weight were measured, and body mass index was calculated. The following parameters were also determined: total cholesterol, triglycerides, high-density lipoprotein cholesterol (HDL-cho), and CRP levels. High-sensitivity CRP was measured by a validated latex-enhanced immunonephelometric assay (sensitivity 0.1 mg/L; Roche Diagnostics, Indianapolis, USA). If the CRP level was > 10 mg/L, the test was repeated.

Echocardiographic Methods and Calculation of Derived Variables

Imaging and Doppler echocardiography were performed in all participants in this study, as previously described (21, 22). Studies were performed using phased-array echocardiography with M-mode, 2-dimensional, pulsed, and color-flow Doppler capabilities. LV internal dimension and septal and posterior wall thickness were measured at end-diastole and end-systole according to the American Society of Echocardiography recommendations (23). Color-flow Doppler recordings were used to check for aortic and mitral regurgitation, as previously described (24). End-diastolic dimensions were used to calculate LV mass by a previously reported formula (25). LV mass was considered an unadjusted variable, and was normalized by body surface area and expressed as LVMI.

The LV diastolic filling pattern was recorded from the apical transducer position with the subject in the left lateral decubitus position, with the sample volume situated between the mitral leaflet tips. The leading edge of the transmitral Doppler flow pattern was traced to derive the peak of early diastolic and atrial phase LV filling, their ratio (E-A ratio), and the deceleration time of early diastolic LV filling (DcT).

Pulmonary venous flow velocities were recorded by placing a sample volume of about 1 cm into the right superior pulmonary vein (26). The variables derived were the peak pulmonary venous flow during ventricular systole (PVs), that during ventricular diastole, and their ratio (S-D ratio). When a biphasic PVs was detected, the highest peak velocity was used (26). All measurements were performed by one trained investigator who was blinded to the clinical data of the subjects.

Clinical End Points

For survival analysis, observation began on the day of echocardiography, and all subjects were followed at the National Cardiovascular Center in Osaka, and treated by implementation of standard lifestyle and pharmacologic mea-

Table 1. Baseline Clinical Characteristics of Study Subjects

Variables	Male (n=309)	Female (n=320)
Age (years)	61.4±0.7	62.4±0.6
Body mass index (kg/m ²)	24.4±0.2	24.2±0.2
Duration of hypertension (years)	15.4±0.6	15.1±0.6
Current smoker (%)	25.6	8.2 [†]
Systolic BP (mmHg)	143.8±0.9	143.7±0.9
Diastolic BP (mmHg)	81.9±0.6	79.7±0.6 [†]
Heart rate (bpm)	61.9±0.8	67.3±0.5*
Diabetes (%)	28.5	19.7 [†]
Total cholesterol (mmol/L)	5.07±0.05	5.32±0.04 [†]
Triglycerides (mmol/L)	1.73±0.08	1.31±0.04 [†]
HDL-chol (mmol/L)	1.18±0.02	1.40±0.02 [†]
Hyperlipidemia treatment (%)	22.7	34.7 [†]
CRP [#] (mg/L)	0.70 (0.30, 1.90)	0.50 (0.30, 1.40) [†]
<1.0 mg/L (%)	56.3	64.4
1.0–2.0 mg/L (%)	19.1	17.8
>2.0 mg/L (%)	24.6	17.8

Data are mean±SEM or percentages. [#]Values were log-transformed for analysis and presented as median (first quartile and third quartile). **p*<0.05 and [†]*p*<0.01 vs. male subjects. BP, blood pressure; HDL-chol, high density lipoprotein cholesterol; CRP, C-reactive protein.

Table 2. Cross-Sectional Analysis of Echocardiographic Parameters According to CRP Category

Variables	CRP		
	<1.0 mg/L	1.0–2.0 mg/L	>2.0 mg/L
Male			
LVMI (g/m ²)	127.7±2.3	138.8±4.0*	143.0±3.4 [†]
E-A ratio	0.93±0.02	0.81±0.04*	0.81±0.03 [†]
DcT (ms)	225.5±3.5	245.8±6.0 [†]	243.0±5.3*
S-D ratio	1.49±0.03	1.73±0.05 [†]	1.66±0.05 [†]
Female			
LVMI (g/m ²)	114.7±2.1	126.0±4.0*	132.3±4.2 [†]
E-A ratio	0.90±0.02	0.77±0.03 [†]	0.81±0.03*
DcT (ms)	224.5±3.0	245.9±5.8 [†]	241.0±5.8*
S-D ratio	1.64±0.03	1.77±0.05*	1.76±0.05*

Data are mean±SEM. **p*<0.05 and [†]*p*<0.01. CRP, C-reactive protein; LVMI, left ventricular mass index; E-A ratio, the ratio of the peak velocity of early diastolic to atrial phase left ventricular filling; DcT, the deceleration time of early diastolic left ventricular filling; S-D ratio, the ratio of the peak pulmonary venous flow during ventricular systole to the during ventricular diastole.

tures. All subjects were periodically referred to our institution for BP control and other diagnostic procedures. CVD events of interest in this study were: myocardial infarction confirmed by electrocardiographic changes, coronary angiography and/or myocardial scintigraphy findings, stroke confirmed by clinical symptoms, computed tomography and magnetic resonance angiography and/or cerebrovascular angiography findings, peripheral arterial occlusive disease confirmed by clinical symptoms, magnetic resonance angiography and/or peripheral angiography (the presence of ≥1 stenosis of ≥50% in the iliac, femoral, popliteal, or crural arteries), and CHF

requiring hospitalization. CHF was defined by the Framingham Heart Study criteria (27). These criteria require the simultaneous presence of at least two major criteria, or one major criterion in conjunction with two minor criteria, to establish a diagnosis of CHF, and have been validated previously (28). The cause of death was classified as CVD if there was sudden death from CVD, by an independent review panel of physicians who were unaware of the echocardiographic and clinical findings. Events that were more equivocal, such as unrecognized myocardial infarction, were not included as CVD for this analysis. Furthermore, patients with clinical evi-

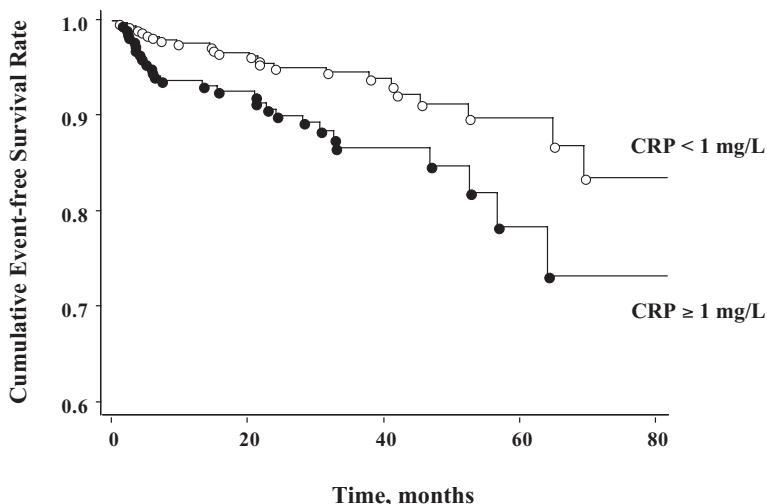


Fig. 1. Cardiovascular event-free survival in two groups divided by baseline CRP level: <1.0 or ≥ 1.0 mg/L (log-rank $\chi^2=8.22$, $p<0.004$).

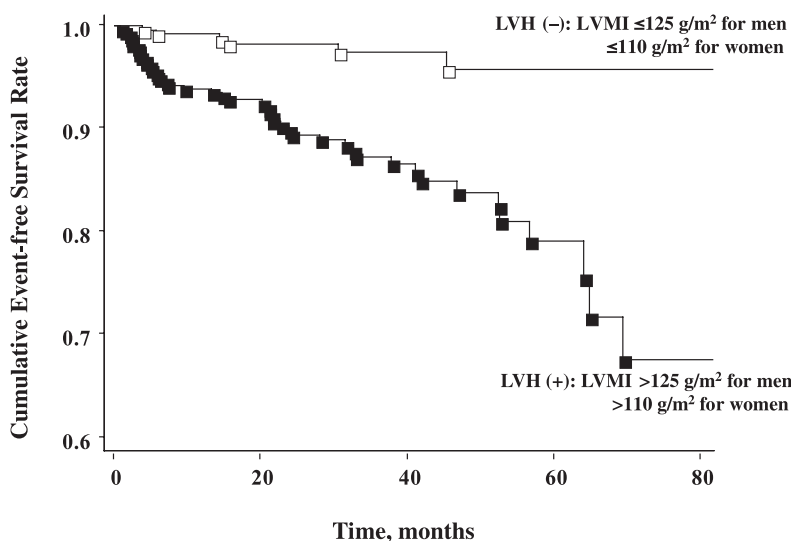


Fig. 2. Cardiovascular event-free survival in two groups divided by the absence or presence of LVH (log-rank $\chi^2=19.91$, $p<0.001$).

dence of pneumonia or uremia were excluded. For patients who experienced multiple non-fatal episodes of CVD, the analysis included only the first event.

Statistical Analysis

Parametric data are presented as the means±SEM. Total subjects were divided into three groups for each sex using the clinical cut-off levels of CRP of <1, 1 to 2, and >2 mg/L, and then the significance of any differences among groups was evaluated using one-way analysis of variance (ANOVA) with Dunnett’s multiple comparison posttest. Multiple regression

models were used to assess the relationship between LVMI and CRP level categories after adjustment for potential confounding factors affecting LVMI. Because of the right skew in CRP distribution, levels of CRP were log-transformed to examine the significance of any difference among groups.

Event-free survival analysis was performed with the Kaplan-Meier method to plot the cumulative incidence of CVD according to CRP level (<1 or ≥1 mg/L) or the absence or presence of LVH (LVMI >125 g/m² for men and >110 g/m² for women) (11, 29), and the groups were compared by the Mantel log rank test. The cut-off level of CRP of 1 mg/L was based both on the AHA/CDC (12) and the ESH-ESC (11) rec-

Table 3. Baseline Clinical Characteristics of Study Subjects

Variables	Non-LVH		LVH	
	CRP <1 mg/L (n=175)	CRP ≥1 mg/L (n=92)	CRP <1 mg/L (n=204)	CRP ≥1 mg/L (n=158)
Male (%)	44.0	55.0	47.1	53.8
Age (years)	57.9±0.9 [§]	62.7±1.2 [†]	63.3±0.8 [†]	64.0±0.9 [†]
Body mass index (kg/m ²)	23.7±0.3	24.8±0.4*	24.2±0.2*	24.7±0.3*
Duration of hypertension (years)	13.0±0.8 [‡]	15.6±1.1	15.9±0.7*	16.8±0.8 [†]
Current smoker (%)	14.4	23.1 [‡]	11.3	22.8 [‡]
Systolic BP (mmHg)	142±1 [‡]	139±2 [§]	146±1*	146±1*
Diastolic BP (mmHg)	82±1	81±1	80±1	80±1
Heart rate (bpm)	67.8±0.6 [‡]	68.5±0.9 [‡]	65.4±0.6*	65.8±0.7
Diabetes (%)	14.3	33.0 ^{*‡}	17.7	38.0 ^{†,§}
Total cholesterol (mmol/L)	5.29±0.06	5.38±0.09	5.15±0.06	5.05±0.06*
Triglycerides (mmol/L)	1.38±0.08	1.95±0.11 ^{†,§}	1.35±0.07	1.63±0.08 [§]
HDL-chol (mmol/L)	1.41±0.03	1.20±0.04 ^{†,‡}	1.34±0.03	1.17±0.03 ^{†,§}
CRP [†] (mg/L)	0.32 (0.30, 0.50)	1.90 (1.40, 3.30) ^{†,§}	0.33 (0.28, 0.52)	2.30 (1.30, 3.73) ^{†,§}
LVMI (g/m ²)	98.8±1.8 [§]	98.2±2.5 [§]	146.0±1.7 [†]	153.1±1.9 [†]
E-A ratio	0.97±0.02 [§]	0.84±0.03 [†]	0.86±0.02 [†]	0.80±0.02 ^{†,‡}
DcT (ms)	220.4±3.6 [‡]	237.7±5.0*	234.6±3.3*	244.0±3.8 [†]
S-D ratio	1.54±0.03 [‡]	1.73±0.04 [†]	1.65±0.03*	1.69±0.03 [†]
Hyperlipidemia treatment (%)	28.0	29.7	26.0	32.9
Antihypertensive medication (%)				
Calcium channel blocker	59.4	63.7	67.7	81.0 ^{†,‡}
β-Blocker	22.9	20.9	25.0	39.2 ^{†,§}
ACEI or ARB	30.9	38.5	33.3	37.3*
Diuretic	8.6 [§]	16.5	21.1 [†]	26.0 [†]
Number of CVD events	3	4	20	25

Data are means±SEM or percentage. [†]Values were log-transformed for analysis and presented as median (first quartile and third quartile). * $p < 0.05$ and [†] $p < 0.01$ vs. non-LVH/CRP <1 mg/L. [‡] $p < 0.05$ and [§] $p < 0.01$ vs. LVH/CRP ≥1 mg/L. LVH, left ventricular hypertrophy; CRP, C-reactive protein; BP, blood pressure; HDL-chol, high density lipoprotein cholesterol; LVMI, left ventricular mass index; E-A ratio, the ratio of the peak velocity of early diastolic to atrial phase left ventricular filling; DcT, the deceleration time of early diastolic left ventricular filling; S-D ratio, the ratio of the peak pulmonary venous flow during ventricular systole to the during ventricular diastole; ACEI, angiotensin-converting enzyme inhibitor; ARB, angiotensin II receptor blocker; CVD, cardiovascular disease.

ommendations in which CRP levels of ≥1 mg/L were defined as average- and high-risk groups. Cox proportional hazard analysis was used to examine the association between variables and the cumulative incidence of CVD in crude models. These effects were measured by hazard ratios (HR) and their 95% confidence intervals (CI) based on Cox regression models.

To evaluate combined effects, we divided the total subjects into four groups according to the baseline level of CRP (<1 or ≥1 mg/L) and the absence or presence of LVH. ANOVA with Dunnett's multiple comparison posttest was also used to analyze data among the four groups. Kaplan-Meier curves for event-free survival according to the level of CRP and LVH category were also constructed. The relative risk of CVD events in Cox proportional-hazard analysis was assessed in crude and multivariate models, after accounting for relevant variables using a p value of less than 0.05 as the selection criterion. The cumulative incidence of CVD was calculated

using the group with non-LVH/CRP <1 mg/L as a reference for the others. A p value less than 0.05 was considered statistically significant. All calculations were performed using a standard statistical package (JMP 4.0; SAS Institute, Cary, USA).

Results

Association between CRP and LVMI

Baseline clinical and biochemical characteristics of the study subjects are shown in Table 1. At baseline, diuretics, β-blockers, angiotensin-converting enzyme inhibitors or angiotensin II receptor blockers, and calcium-channel blockers were used alone or in various combinations in 18.1%, 27.3%, 34.5%, and 68.2% of the study patients, respectively. Male subjects had significantly higher LVMI levels as compared with female subjects (135.6±1.9 vs. 120.1±1.9 g/m²; $p < 0.01$).

Table 4. Combined Effects of CRP and LVMI as Predictors of CVD Events

LVH and CRP	Crude		Risk factor-adjusted model [#]		
	HR (95% CI)	<i>p</i>	HR (95% CI)	χ^2	<i>p</i>
Non-LVH/CRP <1 mg/L	1 (reference)		1 (reference)		
Non-LVH/CRP ≥1 mg/L	1.63 (0.77–3.68)	0.199	1.40 (0.65–3.18)	0.772	0.380
LVH/CRP <1 mg/L	2.42 (1.42–4.98)	<0.001	2.212 (1.29–4.57)	9.166	0.003
LVH/CRP ≥1 mg/L	3.37 (1.99–6.90)	<0.001	2.648 (1.55–5.46)	15.095	<0.001

[#]Risk factor-adjusted model adjusts for the effects of age, sex, diabetes, systolic blood pressure, and HDL-chol. CRP, C-reactive protein; HR, hazard ratios; CI, confidence intervals; LVMI, left ventricular mass index; LVH, left ventricular hypertrophy; HDL, high-density lipoprotein.

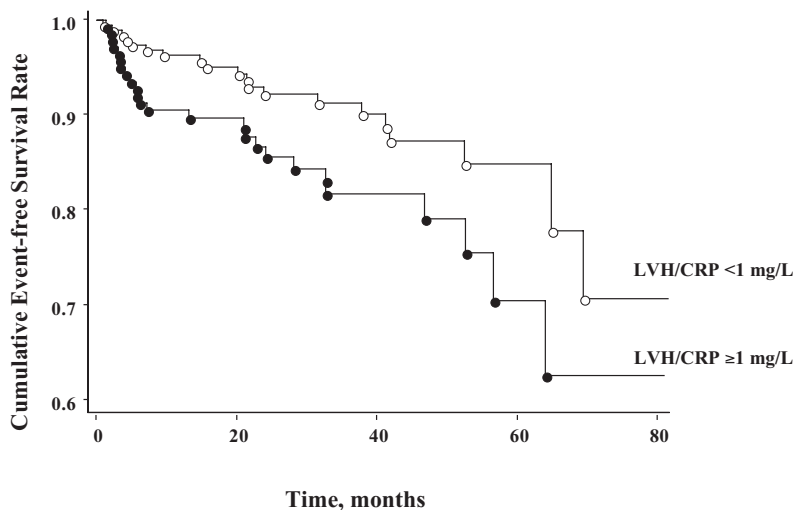


Fig. 3. Kaplan-Meier survival curves for CVD events in the subgroup with LVH (*n* = 362) (log-rank χ^2 = 5.13, *p* = 0.024).

There was a linear increase in LVMI levels as the CRP categories increased; median LVMI levels for those with a CRP level of <1, 1 to 2, and >2 mg/L were 128.5, 133.9, and 139.7 in males, and 111.3, 125.1, and 121.8 g/m² in females, respectively (both, *p* for trend <0.01). Table 2 shows the crude mean levels and SEM ranges of echocardiographic parameters according to CRP category at enrollment. A similar linear increase in the levels of the S-D ratio and DcT, and decrease in the levels of the E-A ratio, were also seen as the levels of CRP category increased. Multivariate analysis including age, body mass index, diabetes, duration of hypertension, SBP and DBP, heart rate, total cholesterol, triglycerides, HDL-chol, and smoking status was performed, and indicated that the CRP category was independently associated with LVMI both in male (CRP [mg/L] <1: 127.2±2.9; 1–2: 138.7±4.1; >2: 141.8±3.5 g/m²; *F*=6.85, *p*=0.001) and female subjects (CRP [mg/L] <1: 119.5±3.6; 1–2: 129.2±4.9; >2: 130.2±4.8 g/m²; *F*=4.23, *p*=0.031). In addition, even after adjustment for taking antihyperlipidemia medication such as statins, fibrates, and niacin, and antihypertensive medication, increasing categories of CRP were still independent predictors of LVMI (male, *F*=5.12, *p*=0.007; female, *F*=4.20,

p=0.032). To exclude the effect of drugs on CRP level, we further examined the association between CRP category and LVMI after excluding subjects receiving antihyperlipidemia medication (male, *n*=233; female, *n*=209). Even after excluding these subjects, increasing categories of CRP were significant predictors of LVMI in both male (CRP [mg/L] <1: 129.7±2.6; 1–2: 133.5±4.6; >2: 145.8±4.0 g/m² (*p*<0.01 vs. CRP<1 mg/L)) and female subjects (CRP [mg/L] <1: 116.2±2.8; 1–2: 124.9±5.5; >3: 127.8±5.8 g/m² (*p*<0.01 vs. CRP<1 mg/L)).

Predictive Value of CRP and LVMI for CVD

During the follow-up period, 52 patients (8.3%, 19 female) developed CVD. There were 27 subjects with CHF, 12 with stroke, 5 with myocardial infarction, and 2 with peripheral arterial occlusive disease, and 6 patients died of CVD causes. The CRP level and LVMI were significantly higher in patients who developed CVD during the follow-up period than in event-free subjects (CRP: 3.87±0.98 vs. 1.93±0.29 mg/L; LVMI: 156.4±4.7 vs. 125.2±1.4 g/m²; *p*<0.01, respectively). The results of the life table analysis of CVD

events throughout the follow-up period according to the two groups on the basis of the CRP level (<1 or ≥ 1 mg/L) and the absence or presence of LVH are plotted in Figs. 1 and 2, respectively. These curves show significantly poorer event-free survival in the group with high CRP and that with LVH, respectively. A univariate Cox proportional-hazard model showed that high CRP (HR 1.51; 95% CI, 1.15–2.01; $p < 0.01$) and LVH (HR 2.45; 95% CI, 1.66–3.96; $p < 0.01$) were significant predictors of CVD events. Other variables in this study that significantly predicted CVD events included age (HR 1.04 for each 1 year increase; 95% CI: 1.01–1.07; $p < 0.01$), sex (HR 1.40 for males; 95% CI: 1.06–1.88; $p < 0.02$), diabetes (HR 1.61 for diabetes; 95% CI: 1.21–2.12; $p < 0.01$), and SBP (HR 1.03 for each 1.0 mmHg increase; 95% CI: 1.01–1.04; $p < 0.01$), and HDL-chol (HR 0.87 for each 10 mmol/L increase; 95% CI: 0.80–0.95; $p < 0.01$).

Incidence of CVD Jointly with CRP and LVH

To assess the combined effects of CRP and LVH, we constructed survival curves after dividing the total subjects into four groups on the basis of CRP level (<1 or ≥ 1 mg/L) and the absence or presence of LVH: non-LVH/CRP <1 , non-LVH/CRP ≥ 1 , LVH/CRP <1 , and LVH/CRP ≥ 1 . The baseline clinical and biochemical characteristics of the study subjects are shown in Table 3. The group with LVH/CRP ≥ 1 showed a significantly higher prevalence of current smokers and diabetes, significantly lower HDL-chol and E-A ratio than that with LVH/CRP <1 . Kaplan-Meier curves in the four groups showed significantly poorer event-free survival in subjects with LVH/CRP ≥ 1 (log-rank $\chi^2 = 28.02$, $p < 0.001$). In Cox regression analysis (Table 4), the risk for CVD was markedly increased in the group with LVH/CRP ≥ 1 (HR 3.37) compared with the non-LVH/CRP <1 group. In multivariate Cox regression analysis including age, sex, diabetes, SBP, and HDL-chol, the combination of LVH and CRP ≥ 1 mg/L was an independent predictor of CVD (HR 2.65).

When the analysis was restricted to the subgroup with LVH ($n = 362$), 45 CVD events occurred during the follow-up period. Even in these subjects, the CRP level was significantly higher in patients who developed CVD during the follow-up period than in event-free subjects (3.82 ± 0.92 vs. 2.02 ± 0.35 mg/L, $p < 0.01$). The results of the life table analysis of CVD throughout the follow-up period according to the two groups on the basis of CRP level (<1 or ≥ 1 mg/L) are plotted in Fig. 3, and these curves show significantly poorer event-free survival in the group with CRP ≥ 1 mg/L. In addition, in Cox regression analysis, CRP ≥ 1 mg/L was associated with a 1.37-fold higher risk of CVD events in the subgroup with LVH (HR 1.37; 95% CI: 1.02–1.85; $p = 0.025$).

Discussion

Our cross-sectional study revealed a linear relationship between categories of CRP and LVMI, and the relationship

was evident even after adjustment for confounding factors by multivariate analysis. In a follow-up study, both high CRP and LVH were significant determinants of CVD events, and the combination of elevated CRP and LVH was a powerful predictor for CVD events. In addition, the present study also demonstrated that, in patients with LVH, CRP had additive predictive value for CVD risk.

The present observation of an independent association between categories of CRP level and LVMI is consistent with previous findings (15, 19), and the present study extended these observations for CRP to essential hypertension. A raised baseline CRP value has been associated with inflammation, endothelial dysfunction (14), obesity (14), the metabolic syndrome (30, 31), diabetes mellitus (32), insulin resistance (13), and severity of hypertension (33), and thus, various metabolic disorders may occur with increasing CRP level, and simultaneously promote an increase in LV mass. On the other hand, local CRP synthesis and secretion by smooth muscle cells, including those of the human coronary artery, have been suggested (34). It is possible to speculate that CRP may play a more direct role in promoting LVH, including 1) increasing phosphatidylinositol-3 kinase activity (35); 2) upregulating inducible nitric oxide synthase, certain cell signal transduction pathways including the mitogen-activated protein kinase pathway, and nuclear factor κ -B; 3) upregulating angiotensin II type 1 receptor in vascular smooth muscle cells, and directly quenching the production of nitric oxide by endothelial cells (2, 4), resulting in increased production of endothelin-1 (34, 36); and 4) elevation of von Willebrand factor (37), which is known to be associated with endothelial dysfunction. Thus, cardiac hypertrophy may be, at least in part, attributable to an increase in CRP itself, *via* activated transcriptional regulatory mechanisms, proinflammatory and proatherogenic effects, and stimulation of endothelial dysfunction.

Previous studies have demonstrated that CRP evaluation adds prognostic value to metabolic syndrome (38), higher fibrinogen (39), or higher BP (3) in terms of CVD risk. The present prospective cohort of initially asymptomatic essential hypertensive patients revealed the importance of measuring CRP in addition to LVMI by echocardiography, and also showed that the combined evaluation of both CRP and LVMI was superior as a method of risk detection compared to measurement of either biologic marker alone. In addition, the present findings suggest that, in the presence of LVH, CRP adds important and independent prognostic information in terms of CVD risk. This result may have been due to the fact that our subjects with higher LVMI and CRP had more severe dyslipidemia, as well as a higher prevalence of current-smoking and diabetes, which are established risk factors for CVD. On the other hand, several mechanisms have been proposed to account for the association between CRP and CVD, including: 1) induction of loss of vasoreactivity, expression of adhesion molecules and secretion of chemoattractants in the endothelium; 2) increases in tissue factor secretion, promo-

tion of monocyte chemotaxis and adhesion to endothelial cells, reactive oxygen species release, matrix metalloproteinase-1 induction, and promotion of oxidized low-density lipoprotein uptake, which leads to increased foam cell formation; 3) increased expression of angiotensin II type 1 receptor mRNA and protein expression as well as increased vascular smooth muscle cell proliferation and migration; 4) binding of CRP to enzymatically modified low density lipoprotein, with the resulting complex showing increased ability to convert C3 and activate its complement (34, 36); and 5) attenuation of the production of nitric oxide and prostacyclin by endothelial cells (2, 4). Furthermore, our results showed that more severe impairment of relaxation was observed in subjects with high LVMI and high CRP, and this “impaired relaxation” is known to be associated with increased risk of CVD (40). In addition, a significant association between the categories of CRP and the E-A ratio, DeT, and S-D ratio, markers of relaxation impairment, was observed in this study, and a high CRP level may contribute to the progression of LV dysfunction. Consequently, we propose that, in subjects with LVH, activation of the renin-angiotensin system, activation of proatherogenic and proinflammatory responses in cardiovascular cells, and more impaired relaxation may occur with increasing CRP level, and enhance the risk for CVD.

It is not possible to conclude whether CRP stimulates higher LVMI or whether CRP is increased before the development of LVH. Indeed, it is possible that both these effects work in tandem in CVD. In addition, this study had missing baseline data and information on other potentially important characteristics, such as alcohol intake and physical activity, which are also associated with a lower CRP level. Finally, we did not account for the duration of hypertension prior to treatment at our institution. Because our data were obtained in subjects with already-treated essential hypertension at the start of the study, these results could underestimate the involvement of BP itself in the development of LVH and CVD events.

In conclusion, in essential hypertensive subjects initially free of CVD, CRP showed a significant association with LVMI. In those with LVH, the baseline CRP level added clinically relevant prognostic information concerning CVD risk. In hypertensive as well as LVH subjects, assessment of CRP levels may help to refine CVD risk stratification.

References

- Ross R: Atherosclerosis—an inflammatory disease. *N Engl J Med* 1999; **340**: 115–126.
- Verma S, Wang CH, Li SH, *et al*: A self-fulfilling prophecy: C-reactive protein attenuates nitric oxide production and inhibits angiogenesis. *Circulation* 2002; **106**: 913–919.
- Sesso HD, Buring JE, Rifai N, Blake GJ, Gaziano JM, Ridker PM: C-reactive protein and the risk of developing hypertension. *JAMA* 2003; **290**: 2945–2951.
- Venugopal SK, Devaraj S, Yuhanna I, Shaul P, Jialal I: Demonstration that C-reactive protein decreases eNOS expression and bioactivity in human aortic endothelial cells. *Circulation* 2002; **106**: 1439–1441.
- Ridker PM, Cushman M, Stampfer MJ, Tracy RP, Hennekens CH: Inflammation, aspirin, and the risk of cardiovascular disease in apparently healthy men. *N Engl J Med* 1997; **336**: 973–979.
- Koenig W, Sund M, Frohlich M, *et al*: C-Reactive protein, a sensitive marker of inflammation, predicts future risk of coronary heart disease in initially healthy middle-aged men: results from the MONICA (Monitoring Trends and Determinants in Cardiovascular Disease) Augsburg Cohort Study, 1984 to 1992. *Circulation* 1999; **99**: 237–242.
- Danesh J, Whincup P, Walker M, *et al*: Low grade inflammation and coronary heart disease: prospective study and updated meta-analyses. *BMJ* 2000; **321**: 199–204.
- Ridker PM, Stampfer MJ, Rifai N: Novel risk factors for systemic atherosclerosis: a comparison of C-reactive protein, fibrinogen, homocysteine, lipoprotein(a), and standard cholesterol screening as predictors of peripheral arterial disease. *JAMA* 2001; **285**: 2481–2485.
- Rost NS, Wolf PA, Kase CS, *et al*: Plasma concentration of C-reactive protein and risk of ischemic stroke and transient ischemic attack: the Framingham study. *Stroke* 2001; **32**: 2575–2579.
- Tracy RP, Lemaitre RN, Psaty BM, *et al*: Relationship of C-reactive protein to risk of cardiovascular disease in the elderly. Results from the Cardiovascular Health Study and the Rural Health Promotion Project. *Arterioscler Thromb Vasc Biol* 1997; **17**: 1121–1127.
- 2003 European Society of Hypertension–European Society of Cardiology guidelines for the management of arterial hypertension. *J Hypertens* 2003; **21**: 1011–1053.
- Pearson TA, Mensah GA, Alexander RW, *et al*: Markers of inflammation and cardiovascular disease: application to clinical and public health practice: a statement for health-care professionals from the Centers for Disease Control and Prevention and the American Heart Association. *Circulation* 2003; **107**: 499–511.
- Festa A, D’Agostino R Jr, Howard G, Mykkanen L, Tracy RP, Haffner SM: Chronic subclinical inflammation as part of the insulin resistance syndrome: the Insulin Resistance Atherosclerosis Study (IRAS). *Circulation* 2000; **102**: 42–47.
- Yudkin JS, Stehouwer CD, Emeis JJ, Coppack SW: C-reactive protein in healthy subjects: associations with obesity, insulin resistance, and endothelial dysfunction: a potential role for cytokines originating from adipose tissue? *Arterioscler Thromb Vasc Biol* 1999; **19**: 972–978.
- Kim BS, Jeon DS, Shin MJ, *et al*: Persistent elevation of C-reactive protein may predict cardiac hypertrophy and dysfunction in patients maintained on hemodialysis. *Am J Nephrol* 2005; **25**: 189–195.
- Olsen MH, Christensen MK, Hansen TW, *et al*: High-sensitivity C-reactive protein is only weakly related to cardiovascular damage after adjustment for traditional cardiovascular risk factors. *J Hypertens* 2006; **24**: 655–661.
- Conen D, Zeller A, Pfisterer M, Martina B: Usefulness of B-type natriuretic peptide and C-reactive protein in predicting the presence or absence of left ventricular hypertrophy in patients with systemic hypertension. *Am J Cardiol* 2006;

- 97: 249–252.
18. Palmieri V, Tracy RP, Roman MJ, *et al*: Relation of left ventricular hypertrophy to inflammation and albuminuria in adults with type 2 diabetes: the strong heart study. *Diabetes Care* 2003; **26**: 2764–2769.
 19. Yasunari K, Maeda K, Watanabe T, Nakamura M, Yoshikawa J, Asada A: Comparative effects of valsartan versus amlodipine on left ventricular mass and reactive oxygen species formation by monocytes in hypertensive patients with left ventricular hypertrophy. *J Am Coll Cardiol* 2004; **43**: 2116–2123.
 20. The Expert Committee on the Diagnosis and Classification of Diabetes Mellitus: Report of the Expert Committee on the Diagnosis and Classification of Diabetes Mellitus. *Diabetes Care* 2003; **26** (Suppl 1): S5–S20.
 21. Iwashima Y, Horio T, Kamide K, Rakugi H, Ogihara T, Kawano Y: Uric acid, left ventricular mass index, and risk of cardiovascular disease in essential hypertension. *Hypertension* 2006; **47**: 195–202.
 22. Iwashima Y, Horio T, Takami Y, *et al*: Effects of the creation of arteriovenous fistula for hemodialysis on cardiac function and natriuretic peptide levels in CRF. *Am J Kidney Dis* 2002; **40**: 974–982.
 23. Schiller NB, Shah PM, Crawford M, *et al*: Recommendations for quantitation of the left ventricle by two-dimensional echocardiography. American Society of Echocardiography Committee on Standards, Subcommittee on Quantitation of Two-Dimensional Echocardiograms. *J Am Soc Echocardiogr* 1989; **2**: 358–367.
 24. Cooper JW, Nanda NC, Philpot EF, Fan P: Evaluation of valvular regurgitation by color Doppler. *J Am Soc Echocardiogr* 1989; **2**: 56–66.
 25. Devereux RB, Alonso DR, Lutas EM, *et al*: Echocardiographic assessment of left ventricular hypertrophy: comparison to necropsy findings. *Am J Cardiol* 1986; **57**: 450–458.
 26. Basnight MA, Gonzalez MS, Kershenovich SC, Appleton CP: Pulmonary venous flow velocity: relation to hemodynamics, mitral flow velocity and left atrial volume, and ejection fraction. *J Am Soc Echocardiogr* 1991; **4**: 547–558.
 27. McKee PA, Castelli WP, McNamara PM, Kannel WB: The natural history of congestive heart failure: the Framingham study. *N Engl J Med* 1971; **285**: 1441–1446.
 28. Mosterd A, Deckers JW, Hoes AW, *et al*: Classification of heart failure in population based research: an assessment of six heart failure scores. *Eur J Epidemiol* 1997; **13**: 491–502.
 29. Hammond IW, Devereux RB, Alderman MH, *et al*: The prevalence and correlates of echocardiographic left ventricular hypertrophy among employed patients with uncomplicated hypertension. *J Am Coll Cardiol* 1986; **7**: 639–650.
 30. Saijo Y, Yoshioka E, Fukui T, Kawaharada M, Kishi R: Metabolic syndrome, C-reactive protein and increased arterial stiffness in Japanese subjects. *Hypertens Res* 2006; **29**: 589–596.
 31. Frohlich M, Imhof A, Berg G, *et al*: Association between C-reactive protein and features of the metabolic syndrome: a population-based study. *Diabetes Care* 2000; **23**: 1835–1839.
 32. Ford ES: Body mass index, diabetes, and C-reactive protein among U.S. adults. *Diabetes Care* 1999; **22**: 1971–1977.
 33. Blake GJ, Rifai N, Buring JE, Ridker PM: Blood pressure, C-reactive protein, and risk of future cardiovascular events. *Circulation* 2003; **108**: 2993–2999.
 34. Jialal I, Devaraj S, Venugopal SK: C-reactive protein: risk marker or mediator in atherothrombosis? *Hypertension* 2004; **44**: 6–11.
 35. Zhong W, Zen Q, Tebo J, Schlottmann K, Coggeshall M, Mortensen RF: Effect of human C-reactive protein on chemokine and chemotactic factor-induced neutrophil chemotaxis and signaling. *J Immunol* 1998; **161**: 2533–2540.
 36. Mazer SP, Rabbani LE: Evidence for C-reactive protein's role in (CRP) vascular disease: atherothrombosis, immunoregulation and CRP. *J Thromb Thrombolysis* 2004; **17**: 95–105.
 37. Bisoendial RJ, Kastelein JJ, Levels JH, *et al*: Activation of inflammation and coagulation after infusion of C-reactive protein in humans. *Circ Res* 2005; **96**: 714–716.
 38. Ridker PM, Wilson PW, Grundy SM: Should C-reactive protein be added to metabolic syndrome and to assessment of global cardiovascular risk? *Circulation* 2004; **109**: 2818–2825.
 39. Lowe GD, Sweetnam PM, Yarnell JW, *et al*: C-reactive protein, fibrin D-dimer, and risk of ischemic heart disease: the Caerphilly and Speedwell studies. *Arterioscler Thromb Vasc Biol* 2004; **24**: 1957–1962.
 40. Schillaci G, Pasqualini L, Verdecchia P, *et al*: Prognostic significance of left ventricular diastolic dysfunction in essential hypertension. *J Am Coll Cardiol* 2002; **39**: 2005–2011.