

- OKAMOTO, M. 1957. Asynaptic effect of chromosome V. *Wheat Inf. Serv.*, **5**, 6.
- RILEY, R. AND CHAPMAN, V. 1958. Genetic control of the cytologically diploid behaviour of hexaploid wheat. *Nature*, **182**, 713–715.
- RILEY, R., CHAPMAN, V. AND KIMBER, G. 1959. Genetic control of chromosome pairing in intergeneric hybrids with wheat. *Nature*, **183**, 1244–1246.

- SCHWARZACHER, T., ANAMTHAWAT-JONSSON, K., HARRISON, G. E., ISLAM, A. K. M. R., JIA, J. Z., KING, I. P., LEITCH, A. R., MILLER, T. E., READER, S. M., ROGERS, W. J., SHI, M. AND HESLOP-HARRISON, J. S. 1992. Genomic *in situ* hybridization to identify alien chromosome segments in wheat. *Theor. Appl. Genet.*, **84**, 778–786.

Erratum

KING, I. P., PURDIE, K. A., ORFORD, S. E., READER, S. M. AND MILLER T. E. (1993). Detection of homoeologous chiasma formation in *Triticum durum* × *Thinopyrum bessarabicum* hybrids using genomic *in situ* hybridization. *Heredity*, **71**, 369–372.

Figure 1 on page 371 was mistakenly reproduced in black-and-white and not in colour, as had been requested by the authors. The Publishers would like to apologize for this and repeat the figure in its correct form here.

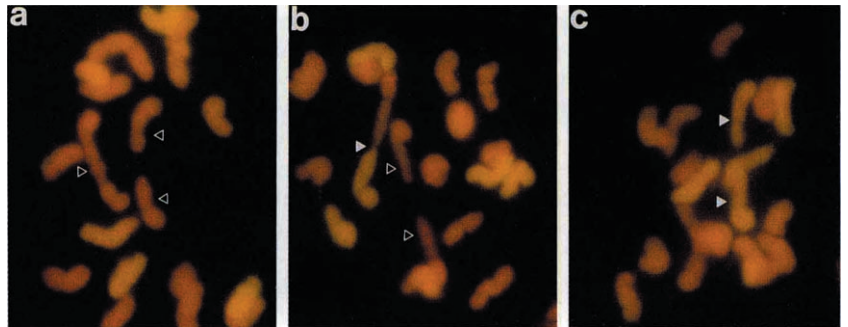


Fig. 1 PMCs showing (a) two wheat bivalents (open triangles), (b) a wheat/*Th. bessarabicum* bivalent (closed triangle) and a wheat/wheat bivalent (open triangles) and (c) a single *Th. bessarabicum/Th. bessarabicum* bivalent (closed triangles).